

*FY 2007*

*ANNUAL REPORT ON THE  
QUALITY OF*

**KEROSENE AND MOTOR  
FUEL IN TENNESSEE**



**IN FULFILLMENT OF THE REQUIREMENTS OF  
TCA 47-18-1304**

---

**SUBMITTED BY THE**

**TENNESSEE DEPARTMENT OF AGRICULTURE**

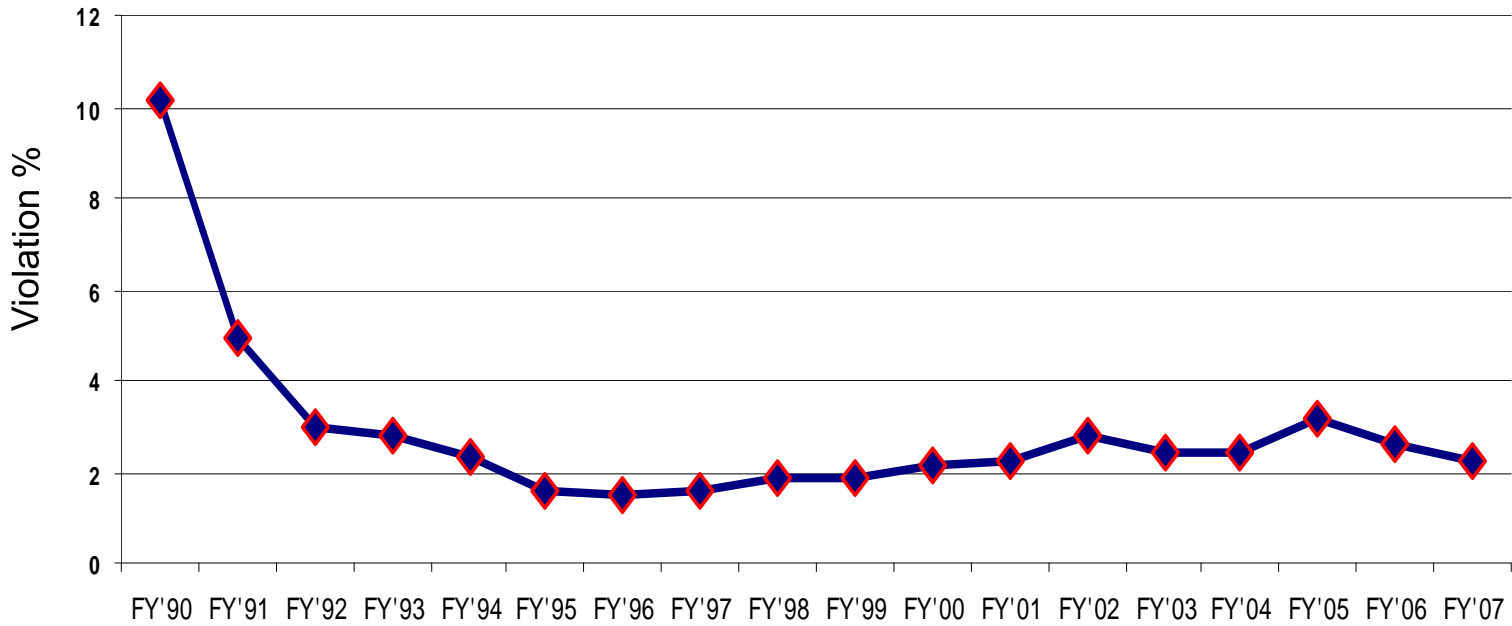


## **ANNUAL REPORT ON THE QUALITY OF KEROSENE AND MOTOR FUEL IN TENNESSEE**

### **TABLE OF CONTENTS**

- I. Effectiveness of Program**
  - a. Violation % Graphs**
  - b. State Wide Violation Graph**
  - c. Gasoline, Diesel, Kerosene Trend Graph**
  
- II. Consumer Complaints Summary**
  
- III. Inspection Data**
  - a. State Wide Summary**
  - b. TN Region Summary**
  - c. Product Summary**
  - d. Business Type Summary**
  - e. Inspection Type Summary**
  - f. County Distribution Data**
  
- IV. Enforcement Summary**

**TENNESSEE DEPARTMENT OF AGRICULTURE**  
**ANNUAL SAMPLE VIOLATION SUMMARY**  
**All Regulated Products Tested**

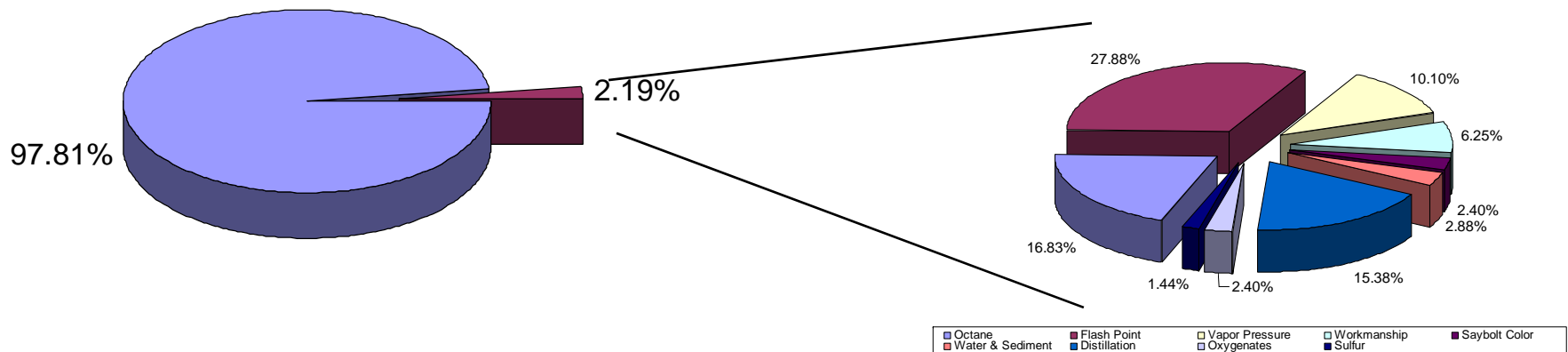


EFFECTIVENESS OF PROGRAM  
REGULATORY SERVICES

# State Wide Violation Summary

## Violation Breakdown

July 1, 2006 - June 30, 2007

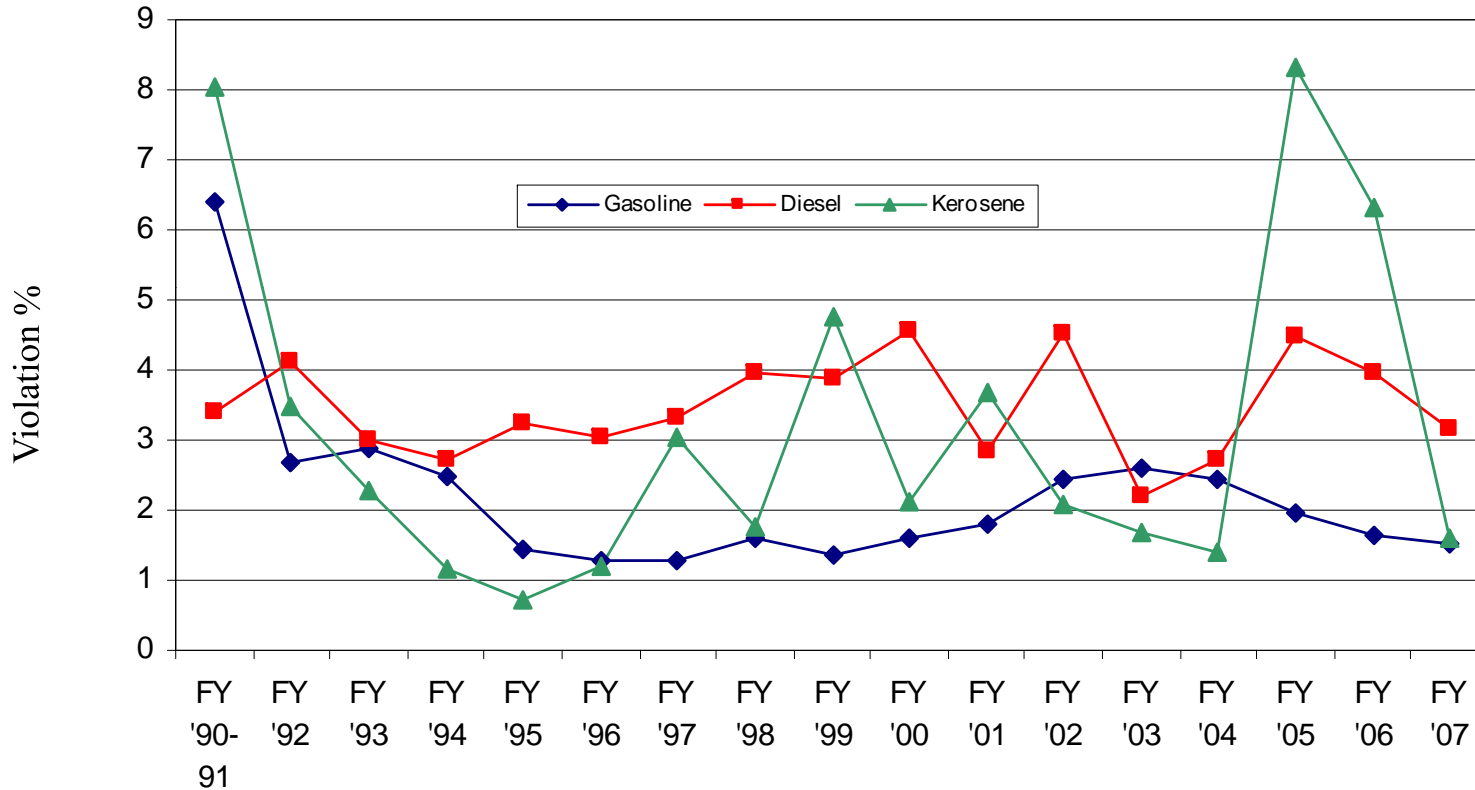


Tennessee Department of Agriculture  
Regulatory Services

# TENNESSEE DEPARTMENT OF AGRICULTURE

## ANNUAL SAMPLE VIOLATION SUMMARY

### Gasoline, Diesel, & Kerosene Breakdown



EFFECTIVENESS OF PROGRAM  
REGULATORY SERVICES



**MOTOR FUELS QUALITY PROGRAM  
SUMMARY OF CONSUMER COMPLAINTS RECEIVED FROM  
07/01/2006 – 06/30/2007**

**TOTAL NUMBER OF COMPLAINTS EVALUATED IN TIME FRAME: 82**

**Category Breakdown of Complaints :**

<b>Octane</b>	<b>13</b>
<b>Water</b>	<b>45</b>
<b>Sediment</b>	<b>4</b>
<b>Alcohols</b>	<b>1</b>
<b>Contamination</b>	<b>16</b>
<b>Misc.</b>	<b>4</b>

**The Department maintains a 24 hour toll free line (1-800-OCTANE1) for Consumer Complaints. It is promoted through media publicity and dispenser decals applied by inspectors performing Weights and Measures activities.**

## REPORTING CODE KEY

### Product Codes

AG - Aviation Gasoline  
D - Diesel  
G - Gasoline  
JF - Jet Fuel  
K - Kerosene  
RF - Racing Fuel  
PD - Premium Diesel  
BD - Biodiesel Blending Stock  
BDB - Biodiesel Blend  
LPG - Liquefied Petroleum Gas  
E85 - E-85 Fuel Ethanol

### Grade Codes

MG - Mid Grade  
MGE - Mid Grade w/ Ethanol  
PU - Premium Unleaded  
PUE - Premium Unleaded w/ Ethanol  
RL - Regular Leaded  
RU - Regular Unleaded  
RUE - Regular Unleaded w/ Ethanol  
SO - Sub Octane  
1D - No. 1-D Diesel  
2D - No. 2-D Diesel  
2DLS - No. 2-D Low Sulfur  
2D UL - No. 2-D ULSD  
1K - No. 1 Kerosene  
2K - No. 2 Kerosene  
JA - Jet A Turbine Fuel  
80 - 80 Octane  
100 - 100 Octane  
100LL - 100 Low Lead  
BDBS - S500 Biodiesel Blending Stock  
BDBS1 - S15 Biodiesel Blending Stock  
B10LS - B10 Biodiesel Low Sulfur  
B20U - B20 Biodiesel ULSD  
B20LS - B20 Biodiesel Low Sulfur  
B5 LS - B5 Biodiesel Low Sulfur  
B5-20 - B5-20 Low Sulfur  
E-85 - E-85 Fuel Ethanol Grade  
SD - Special Duty Propane

### District Codes

W - West TN  
M - Middle TN  
E - East TN

### Business Type

R - Retailer  
T - Terminal  
A - Airport  
D - Distributor  
M - Marina  
O - Other  
I - Individual

### Inspection Type

R - Routine  
C - Complaint  
F - Follow-up  
O - Office Request

# Tennessee Department of Agriculture State Wide Violation Analysis Report

PULL DATE ranges from 7/1/2006 TO 6/30/2007

Today: 06/06/2008

<i>Prod Code</i>	<i>Total Samples</i>	<i>Samples in Violation</i>	<i>%</i>	<i>Test Violation Total</i>	<i>Total Volume (Gals)</i>	<i>Total in Violation</i>
AG	66	0	0.00	0	1,845,051.05	0
BD	40	18	45.00	36	212,447.00	123,626
BDB	43	8	18.60	9	219,663.00	24,200
D	1,730	55	3.18	56	90,049,516.40	97,759
E85	1	0	0.00	0	1,100.00	0
G	5,491	84	1.53	101	210,815,157.56	1,504,241
JF	49	0	0.00	0	604,736.10	0
K	377	6	1.59	6	362,016.00	2,311
LPG	2	0	0.00	0	15,700.00	0
<b>Total</b>	<b>7,799</b>	<b>171</b>	<b>2.19</b>	<b>208</b>	<b>304,125,387.11</b>	<b>1,752,137</b>

## Test Violation Detail Listing

35	Octane	16.83%
58	Flash Point	27.88%
5	Oxygenates	2.40%
21	Vapor Pressure	10.10%
13	Workmanship (Appearance)	6.25%
5	Saybolt Color	2.40%
6	Sediment & Water	2.88%
3	Sulfur	1.44%
32	Distillation	15.38%
1	Cetane Number	0.48%
1	Acid Number	0.48%
11	Glycerine	5.29%
1	Viscosity	0.48%
2	Sulfated Ash	0.96%
1	Carbon Residue	0.48%
2	Phosphorous	0.96%
4	Biodiesel Blend	1.92%
7	Oxidation	3.37%



## Tennessee Department of Agriculture District Violation Analysis Report

ALL DISTRICT VALUES SELECTED.

PULL DATE ranges from 07/01/2006 TO 6/30/2007

Today: 08/12/2008

<i>Dist</i>	<i>Prod Code</i>	<i>Grade</i>	<i>Total Samples</i>	<i>Samples in Violation</i>	<i>%</i>	<i>Test Violation Total</i>	<i>Total Volume (Gals)</i>	<i>Total in Violation</i>
EAST								
AG	100LL		17	0	0.00	0	46,919	0
<b>Subtotal:</b>			<b>17</b>	<b>0</b>	<b>0.00</b>	<b>0</b>	<b>46,919</b>	<b>0</b>
BD	BDBS		5	3	60.00	11	35,214	20,014
BD	BDBS15		2	0	0.00	0	12,113	0
<b>Subtotal:</b>			<b>7</b>	<b>3</b>	<b>42.86</b>	<b>11</b>	<b>47,327</b>	<b>20,014</b>
BDB	B10LS		1	0	0.00	0	1,110	0
BDB	B20LS		19	3	15.79	4	92,435	13,712
<b>Subtotal:</b>			<b>20</b>	<b>3</b>	<b>15.00</b>	<b>4</b>	<b>93,545</b>	<b>13,712</b>
D	2D		50	2	4.00	2	9,226,426	9,426
D	2D LS		633	17	2.69	18	18,626,106	15,658
D	2D ULSD 1:		132	2	1.52	2	19,224,692	10,013
<b>Subtotal:</b>			<b>815</b>	<b>21</b>	<b>2.58</b>	<b>22</b>	<b>47,077,224</b>	<b>35,097</b>
E85	E-85		1	0	0.00	0	1,100	0
<b>Subtotal:</b>			<b>1</b>	<b>0</b>	<b>0.00</b>	<b>0</b>	<b>1,100</b>	<b>0</b>
G	MG		689	10	1.45	10	2,037,880	34,131
G	PU		1,042	22	2.11	25	28,544,463	42,400
G	RU		795	10	1.26	15	57,413,155	1,354,175
<b>Subtotal:</b>			<b>2,526</b>	<b>42</b>	<b>1.66</b>	<b>50</b>	<b>87,995,498</b>	<b>1,430,706</b>
JF	JA		8	0	0.00	0	35,023	0
<b>Subtotal:</b>			<b>8</b>	<b>0</b>	<b>0.00</b>	<b>0</b>	<b>35,023</b>	<b>0</b>
K	1K		138	3	2.17	3	145,874	946
<b>Subtotal:</b>			<b>138</b>	<b>3</b>	<b>2.17</b>	<b>3</b>	<b>145,874</b>	<b>946</b>
LPG	SD		1	0	0.00	0	700	0
<b>Subtotal:</b>			<b>1</b>	<b>0</b>	<b>0.00</b>	<b>0</b>	<b>700</b>	<b>0</b>

# Tennessee Department of Agriculture District Violation Analysis Report

ALL DISTRICT VALUES SELECTED.

PULL DATE ranges from 07/01/2006 TO 6/30/2007

Today: 08/12/2008

<i>Dist</i>	<i>Prod Code</i>	<i>Grade</i>	<i>Total Samples</i>	<i>Samples in Violation</i>	<i>%</i>	<i>Test Violation Total</i>	<i>Total Volume (Gals)</i>	<i>Total in Violation</i>
<b>Total:</b>			<b>3,533</b>	<b>72</b>	<b>2.04</b>	<b>90</b>	<b>135,443,209</b>	<b>1,500,475</b>

## Total Violation Detail Listing

16	Octane	17.78%
24	Flash Point	26.67%
5	Oxygenates	5.56%
11	Vapor Pressure	12.22%
6	Workmanship (Appearance)	6.67%
2	Saybolt Color	2.22%
1	Sediment & Water	1.11%
1	Sulfur	1.11%
14	Distillation	15.56%
4	Glycerine	4.44%
1	Sulfated Ash	1.11%
2	Phosphorous	2.22%
2	Biodiesel Blend	2.22%
1	Oxidation	1.11%

## Tennessee Department of Agriculture District Violation Analysis Report

ALL DISTRICT VALUES SELECTED.

PULL DATE ranges from 07/01/2006 TO 6/30/2007

Today: 08/12/2008

<i>Dist</i>	<i>Prod Code</i>	<i>Grade</i>	<i>Total Samples</i>	<i>Samples in Violation</i>	<i>%</i>	<i>Test Violation Total</i>	<i>Total Volume (Gals)</i>	<i>Total in Violation</i>
MIDDLE								
AG	100LL		25	0	0.00	0	166,056	0
	<b>Subtotal:</b>		<b>25</b>	<b>0</b>	<b>0.00</b>	<b>0</b>	<b>166,056</b>	<b>0</b>
BD	BDBS		14	7	50.00	10	25,921	13,018
	<b>Subtotal:</b>		<b>14</b>	<b>7</b>	<b>50.00</b>	<b>10</b>	<b>25,921</b>	<b>13,018</b>
BDB	B10LS		1	0	0.00	0	16,668	0
BDB	B20 ULSD		1	0	0.00	0	4,104	0
BDB	B20LS		5	2	40.00	2	7,369	3,066
BDB	B5-20		6	0	0.00	0	25,201	0
BDB	B5-20 ULSD		1	1	100.00	1	0	0
	<b>Subtotal:</b>		<b>14</b>	<b>3</b>	<b>21.43</b>	<b>3</b>	<b>53,342</b>	<b>3,066</b>
D	2D		104	2	1.92	2	1,482,741	17,034
D	2D LS		448	15	3.35	15	12,366,778	15,040
D	2D ULSD 1!		104	3	2.88	3	15,735,603	3,269
	<b>Subtotal:</b>		<b>656</b>	<b>20</b>	<b>3.05</b>	<b>20</b>	<b>29,585,122</b>	<b>35,343</b>
G	MG		526	5	0.95	5	2,359,163	5,423
G	PU		694	7	1.01	7	40,756,399	20,797
G	RU		597	5	0.84	5	60,999,200	18,801
	<b>Subtotal:</b>		<b>1,817</b>	<b>17</b>	<b>0.94</b>	<b>17</b>	<b>104,114,762</b>	<b>45,021</b>
JF	JA		21	0	0.00	0	143,763	0
	<b>Subtotal:</b>		<b>21</b>	<b>0</b>	<b>0.00</b>	<b>0</b>	<b>143,763</b>	<b>0</b>
K	1K		198	3	1.52	3	172,282	1,365
	<b>Subtotal:</b>		<b>198</b>	<b>3</b>	<b>1.52</b>	<b>3</b>	<b>172,282</b>	<b>1,365</b>
LPG	SD		1	0	0.00	0	15,000	0
	<b>Subtotal:</b>		<b>1</b>	<b>0</b>	<b>0.00</b>	<b>0</b>	<b>15,000</b>	<b>0</b>

## Tennessee Department of Agriculture District Violation Analysis Report

ALL DISTRICT VALUES SELECTED.

PULL DATE ranges from 07/01/2006 TO 6/30/2007

Today: 08/12/2008

<i>Dist</i>	<i>Prod Code</i>	<i>Grade</i>	<i>Total Samples</i>	<i>Samples in Violation</i>	<i>%</i>	<i>Test Violation Total</i>	<i>Total Volume (Gals)</i>	<i>Total in Violation</i>
<b>Total:</b>			<b>2,746</b>	<b>50</b>	<b>1.82</b>	<b>53</b>	<b>134,276,248</b>	<b>97,813</b>

### Total Violation Detail Listing

4	Octane	7.55%
18	Flash Point	33.96%
4	Vapor Pressure	7.55%
5	Workmanship (Appearance)	9.43%
3	Saybolt Color	5.66%
3	Sediment & Water	5.66%
6	Distillation	11.32%
1	Cetane Number	1.89%
4	Glycerine	7.55%
2	Biodiesel Blend	3.77%
3	Oxidation	5.66%

## Tennessee Department of Agriculture District Violation Analysis Report

ALL DISTRICT VALUES SELECTED.

PULL DATE ranges from 07/01/2006 TO 6/30/2007

Today: 08/12/2008

<i>Dist</i>	<i>Prod Code</i>	<i>Grade</i>	<i>Total Samples</i>	<i>Samples in Violation</i>	<i>%</i>	<i>Test Violation Total</i>	<i>Total Volume (Gals)</i>	<i>Total in Violation</i>
WEST								
AG	100LL		24	0	0.00	0	1,632,076	0
<b>Subtotal:</b>			<b>24</b>	<b>0</b>	<b>0.00</b>	<b>0</b>	<b>1,632,076</b>	<b>0</b>
BD	BDBS		19	8	42.11	15	139,199	90,594
<b>Subtotal:</b>			<b>19</b>	<b>8</b>	<b>42.11</b>	<b>15</b>	<b>139,199</b>	<b>90,594</b>
BDB	B10LS		1	0	0.00	0	4,130	0
BDB	B20LS		1	1	100.00	1	5,200	5,200
BDB	B5 LS		4	1	25.00	1	5,995	2,222
BDB	B5-20		3	0	0.00	0	57,451	0
<b>Subtotal:</b>			<b>9</b>	<b>2</b>	<b>22.22</b>	<b>2</b>	<b>72,776</b>	<b>7,422</b>
D	2D		15	0	0.00	0	3,152,943	0
D	2D LS		208	12	5.77	12	786,055	20,058
D	2D ULSD 1:		36	2	5.56	2	9,448,173	7,261
<b>Subtotal:</b>			<b>259</b>	<b>14</b>	<b>5.41</b>	<b>14</b>	<b>13,387,171</b>	<b>27,319</b>
G	MG		425	4	0.94	5	1,163,640	5,986
G	PU		525	16	3.05	22	4,760,709	19,434
G	RU		198	5	2.53	7	12,780,549	3,094
<b>Subtotal:</b>			<b>1,148</b>	<b>25</b>	<b>2.18</b>	<b>34</b>	<b>18,704,898</b>	<b>28,514</b>
JF	JA		20	0	0.00	0	425,950	0
<b>Subtotal:</b>			<b>20</b>	<b>0</b>	<b>0.00</b>	<b>0</b>	<b>425,950</b>	<b>0</b>
K	1K		41	0	0.00	0	43,860	0
<b>Subtotal:</b>			<b>41</b>	<b>0</b>	<b>0.00</b>	<b>0</b>	<b>43,860</b>	<b>0</b>
<b>Total:</b>			<b>1,520</b>	<b>49</b>	<b>3.22</b>	<b>65</b>	<b>34,405,930</b>	<b>153,849</b>

**Tennessee Department of Agriculture  
District Violation Analysis Report**

ALL DISTRICT VALUES SELECTED.

PULL DATE ranges from 07/01/2006 TO 6/30/2007

Today: 08/12/2008

<i>Dist</i>	<i>Prod Code</i>	<i>Grade</i>	<i>Total Samples</i>	<i>Samples in Violation</i>	<i>%</i>	<i>Test Violation Total</i>	<i>Total Volume (Gals)</i>	<i>Total in Violation</i>
-------------	------------------	--------------	----------------------	-----------------------------	----------	-----------------------------	----------------------------	---------------------------

**Total Violation Detail Listing**

15	Octane	23.08%
16	Flash Point	24.62%
6	Vapor Pressure	9.23%
2	Workmanship (Appearance)	3.08%
2	Sediment & Water	3.08%
2	Sulfur	3.08%
12	Distillation	18.46%
1	Acid Number	1.54%
3	Glycerine	4.62%
1	Viscosity	1.54%
1	Sulfated Ash	1.54%
1	Carbon Residue	1.54%
3	Oxidation	4.62%

# Tennessee Department of Agriculture Product Violation Analysis Report

PULL DATE ranges from 07/01/2006 TO 06/30/2007

Today: 08/12/2008

<i>Prod</i>	<i>Grade</i>	<i>Total Samples</i>	<i>Samples in Violation</i>	<i>%</i>	<i>Test Violation Total</i>	<i>Total Volume (Gals)</i>	<i>Total in Violation</i>
Aviation Gasoline	100LL	66	0	0.00	0	1,845,051.05	0
<b>Subtotal:</b>		<b>66</b>	<b>0</b>	<b>0.00</b>	<b>0</b>	<b>1,845,051.05</b>	<b>0</b>

# Tennessee Department of Agriculture Product Violation Analysis Report

PULL DATE ranges from 07/01/2006 TO 06/30/2007

Today: 08/12/2008

<i>Prod</i>	<i>Grade</i>	<i>Total Samples</i>	<i>Samples in Violation</i>	<i>%</i>	<i>Test Violation Total</i>	<i>Total Volume (Gals)</i>	<i>Total in Violation</i>
Biodiesel							
	BDBS	38	18	47.37	36	200,334.00	123,626
	BDBS1	2	0	0.00	0	12,113.00	0
<b>Subtotal:</b>		<b>40</b>	<b>18</b>	<b>45.00</b>	<b>36</b>	<b>212,447.00</b>	<b>123,626</b>

## Test Violation Detail Listing

6	Flash Point	16.67%
1	Sediment & Water	2.78%
4	Distillation	11.11%
1	Acid Number	2.78%
11	Glycerine	30.56%
1	Viscosity	2.78%
2	Sulfated Ash	5.56%
1	Carbon Residue	2.78%
2	Phosphorous	5.56%
7	Oxidation	19.44%



# Tennessee Department of Agriculture Product Violation Analysis Report

PULL DATE ranges from 07/01/2006 TO 06/30/2007

Today: 08/12/2008

<i>Prod</i>	<i>Grade</i>	<i>Total Samples</i>	<i>Samples in Violation</i>	<i>%</i>	<i>Test Violation Total</i>	<i>Total Volume (Gals)</i>	<i>Total in Violation</i>
Biodiesel Blend							
	B10LS	3	0	0.00	0	21,908.00	0
	B20 U	1	0	0.00	0	4,104.00	0
	B20LS	25	6	24.00	7	105,004.00	21,978
	B5 LS	4	1	25.00	1	5,995.00	2,222
	B5-20	10	1	10.00	1	82,652.00	0
<b>Subtotal:</b>		<b>43</b>	<b>8</b>	<b>18.60</b>	<b>9</b>	<b>219,663.00</b>	<b>24,200</b>

## Test Violation Detail Listing

4	Flash Point	44.44%
1	Sediment & Water	11.11%
4	Biodiesel Blend	44.44%

# Tennessee Department of Agriculture Product Violation Analysis Report

PULL DATE ranges from 07/01/2006 TO 06/30/2007

Today: 08/12/2008

<i>Prod</i>	<i>Grade</i>	<i>Total Samples</i>	<i>Samples in Violation</i>	<i>%</i>	<i>Test Violation Total</i>	<i>Total Volume (Gals)</i>	<i>Total in Violation</i>
Diesel	2D	169	4	2.37	4	13,862,110.00	26,460
	2D LS	1,289	44	3.41	45	31,778,938.40	50,756
	2D UL	272	7	2.57	7	44,408,468.00	20,543
<b>Subtotal:</b>		<b>1,730</b>	<b>55</b>	<b>3.18</b>	<b>56</b>	<b>90,049,516.40</b>	<b>97,759</b>

## Test Violation Detail Listing

47	Flash Point	83.93%
4	Sediment & Water	7.14%
3	Sulfur	5.36%
1	Distillation	1.79%
1	Cetane Number	1.79%

## Tennessee Department of Agriculture Product Violation Analysis Report

PULL DATE ranges from 07/01/2006 TO 06/30/2007

Today: 08/12/2008

<i>Prod</i>	<i>Grade</i>	<i>Total Samples</i>	<i>Samples in Violation</i>	<i>%</i>	<i>Test Violation Total</i>	<i>Total Volume (Gals)</i>	<i>Total in Violation</i>
E-85 Fuel Ethanol	E-85	1	0	0.00	0	1,100.00	0
<b>Subtotal:</b>		<b>1</b>	<b>0</b>	<b>0.00</b>	<b>0</b>	<b>1,100.00</b>	<b>0</b>

# Tennessee Department of Agriculture Product Violation Analysis Report

PULL DATE ranges from 07/01/2006 TO 06/30/2007

Today: 08/12/2008

<i>Prod</i>	<i>Grade</i>	<i>Total Samples</i>	<i>Samples in Violation</i>	<i>%</i>	<i>Test Violation Total</i>	<i>Total Volume (Gals)</i>	<i>Total in Violation</i>
Gasoline							
	MG	1,640	19	1.16	20	5,560,683.36	45,540
	PU	2,261	45	1.99	54	74,061,570.30	82,631
	RU	1,590	20	1.26	27	131,192,903.90	1,376,070
<b>Subtotal:</b>		<b>5,491</b>	<b>84</b>	<b>1.53</b>	<b>101</b>	<b>210,815,157.56</b>	<b>1,504,241</b>

## Test Violation Detail Listing

35	Octane	34.65%
5	Oxygenates	4.95%
21	Vapor Pressure	20.79%
13	Workmanship (Appearance)	12.87%
27	Distillation	26.73%

## Tennessee Department of Agriculture Product Violation Analysis Report

PULL DATE ranges from 07/01/2006 TO 06/30/2007

Today: 08/12/2008

<i>Prod</i>	<i>Grade</i>	<i>Total Samples</i>	<i>Samples in Violation</i>	<i>%</i>	<i>Test Violation Total</i>	<i>Total Volume (Gals)</i>	<i>Total in Violation</i>
Jet Fuel	JA	49	0	0.00	0	604,736.10	0
<b>Subtotal:</b>		<b>49</b>	<b>0</b>	<b>0.00</b>	<b>0</b>	<b>604,736.10</b>	<b>0</b>

# Tennessee Department of Agriculture Product Violation Analysis Report

PULL DATE ranges from 07/01/2006 TO 06/30/2007

Today: 08/12/2008

<i>Prod</i>	<i>Grade</i>	<i>Total Samples</i>	<i>Samples in Violation</i>	<i>%</i>	<i>Test Violation Total</i>	<i>Total Volume (Gals)</i>	<i>Total in Violation</i>
Kerosene	1K	377	6	1.59	6	362,016.00	2,311
<b>Subtotal:</b>		<b>377</b>	<b>6</b>	<b>1.59</b>	<b>6</b>	<b>362,016.00</b>	<b>2,311</b>

## Test Violation Detail Listing

1	Flash Point	16.67%
5	Saybolt Color	83.33%

## Tennessee Department of Agriculture Product Violation Analysis Report

PULL DATE ranges from 07/01/2006 TO 06/30/2007

Today: 08/12/2008

<i>Prod</i>	<i>Grade</i>	<i>Total Samples</i>	<i>Samples in Violation</i>	<i>%</i>	<i>Test Violation Total</i>	<i>Total Volume (Gals)</i>	<i>Total in Violation</i>
Liquid Propane Gas	SD	2	0	0.00	0	15,700.00	0
<b>Subtotal:</b>		<b>2</b>	<b>0</b>	<b>0.00</b>	<b>0</b>	<b>15,700.00</b>	<b>0</b>

## Tennessee Department of Agriculture Business Type Violation Analysis Report

Data Sorted with All Parameters

PULL DATE ranges from 7/1/2006 TO 6/30/2007

Today: 08/12/2008

<i>Bus Type</i>	<i>Prod Code</i>	<i>Grade</i>	<i>Total Samples</i>	<i>Samples in Violation</i>	<i>%</i>	<i>Test Violation Total</i>	<i>Total Volume (Gals)</i>	<i>Total in Violation</i>
Airport	AG	100LL	60	0	0.00	0	325,073	0
		<b>Subtotal:</b>	<b>60</b>	<b>0</b>	<b>0.00</b>	<b>0</b>	<b>325,073</b>	<b>0</b>
	G	PU	1	0	0.00	0	4,400	0
	G	RU	2	0	0.00	0	1,440	0
		<b>Subtotal:</b>	<b>3</b>	<b>0</b>	<b>0.00</b>	<b>0</b>	<b>5,840</b>	<b>0</b>
	JF	JA	45	0	0.00	0	331,895	0
		<b>Subtotal:</b>	<b>45</b>	<b>0</b>	<b>0.00</b>	<b>0</b>	<b>331,895</b>	<b>0</b>
		<b>Total:</b>	<b>108</b>	<b>0</b>	<b>0.00</b>	<b>0</b>	<b>662,808</b>	<b>0</b>



# Tennessee Department of Agriculture Business Type Violation Analysis Report

Data Sorted with All Parameters

PULL DATE ranges from 7/1/2006 TO 6/30/2007

Today: 08/12/2008

<i>Bus Type</i>	<i>Prod Code</i>	<i>Grade</i>	<i>Total Samples</i>	<i>Samples in Violation</i>	<i>%</i>	<i>Test Violation Total</i>	<i>Total Volume (Gals)</i>	<i>Total in Violation</i>
Distributor								
	AG	100LL	1	0	0.00	0	1,112	0
		<b>Subtotal:</b>	<b>1</b>	<b>0</b>	<b>0.00</b>	<b>0</b>	<b>1,112</b>	<b>0</b>
	BD	BDBS	17	6	35.29	20	60,384	25,722
	BD	BDBS15	1	0	0.00	0	5,200	0
		<b>Subtotal:</b>	<b>18</b>	<b>6</b>	<b>33.33</b>	<b>20</b>	<b>65,584</b>	<b>25,722</b>
	BDB	B10LS	1	0	0.00	0	4,130	0
	BDB	B20LS	2	1	50.00	1	7,874	6,811
	BDB	B5 LS	1	0	0.00	0	1,420	0
	BDB	B5-20	1	0	0.00	0	16,509	0
	BDB	B5-20 ULSE	1	1	100.00	1		0
		<b>Subtotal:</b>	<b>6</b>	<b>2</b>	<b>33.33</b>	<b>2</b>	<b>29,933</b>	<b>6,811</b>
	D	2D	33	1	3.03	1	172,934	8,777
	D	2D LS	36	1	2.78	1	194,805	2,458
	D	2D ULSD 1!	12	0	0.00	0	73,541	0
		<b>Subtotal:</b>	<b>81</b>	<b>2</b>	<b>2.47</b>	<b>2</b>	<b>441,280</b>	<b>11,235</b>
	G	MG	7	0	0.00	0	196,194	0
	G	PU	30	0	0.00	0	100,574	0
	G	RU	29	0	0.00	0	250,532	0
		<b>Subtotal:</b>	<b>66</b>	<b>0</b>	<b>0.00</b>	<b>0</b>	<b>547,300</b>	<b>0</b>
	JF	JA	1	0	0.00	0	2,224	0
		<b>Subtotal:</b>	<b>1</b>	<b>0</b>	<b>0.00</b>	<b>0</b>	<b>2,224</b>	<b>0</b>
	K	1K	3	0	0.00	0	10,080	0
		<b>Subtotal:</b>	<b>3</b>	<b>0</b>	<b>0.00</b>	<b>0</b>	<b>10,080</b>	<b>0</b>
	LPG	SD	2	0	0.00	0	15,700	0
		<b>Subtotal:</b>	<b>2</b>	<b>0</b>	<b>0.00</b>	<b>0</b>	<b>15,700</b>	<b>0</b>
		<b>Total:</b>	<b>178</b>	<b>10</b>	<b>5.62</b>	<b>24</b>	<b>1,113,213</b>	<b>43,768</b>

# Tennessee Department of Agriculture Business Type Violation Analysis Report

Data Sorted with All Parameters

PULL DATE ranges from 7/1/2006 TO 6/30/2007

Today: 08/12/2008

<i>Bus Type</i>	<i>Prod Code</i>	<i>Grade</i>	<i>Total Samples</i>	<i>Samples in Violation</i>	<i>%</i>	<i>Test Violation Total</i>	<i>Total Volume (Gals)</i>	<i>Total in Violation</i>
---------------------	----------------------	--------------	--------------------------	-------------------------------------	----------	-------------------------------------	------------------------------------	-----------------------------------

## Test Violation Detail Listing

5	Flash Point	20.83%
1	Sulfur	4.17%
2	Distillation	8.33%
6	Glycerine	25.00%
1	Viscosity	4.17%
2	Sulfated Ash	8.33%
1	Carbon Residue	4.17%
2	Phosphorous	8.33%
2	Biodiesel Blend	8.33%
2	Oxidation	8.33%

# Tennessee Department of Agriculture Business Type Violation Analysis Report

Data Sorted with All Parameters

PULL DATE ranges from 7/1/2006 TO 6/30/2007

Today: 08/12/2008

<i>Bus Type</i>	<i>Prod Code</i>	<i>Grade</i>	<i>Total Samples</i>	<i>Samples in Violation</i>	<i>%</i>	<i>Test Violation Total</i>	<i>Total Volume (Gals)</i>	<i>Total in Violation</i>
Marina								
	D	2D	4	0	0.00	0	4,381	0
	D	2D LS	2	0	0.00	0	12,536	0
		<b>Subtotal:</b>	<b>6</b>	<b>0</b>	<b>0.00</b>	<b>0</b>	<b>16,917</b>	<b>0</b>
	G	MG	45	2	4.44	2	80,394	2,923
	G	PU	23	1	4.35	1	54,595	1,600
	G	RU	37	2	5.41	2	46,376	2,118
		<b>Subtotal:</b>	<b>105</b>	<b>5</b>	<b>4.76</b>	<b>5</b>	<b>181,365</b>	<b>6,641</b>
		<b>Total:</b>	<b>111</b>	<b>5</b>	<b>4.50</b>	<b>5</b>	<b>198,282</b>	<b>6,641</b>

## Test Violation Detail Listing

1	Octane	20.00%
2	Vapor Pressure	40.00%
2	Distillation	40.00%

# Tennessee Department of Agriculture Business Type Violation Analysis Report

Data Sorted with All Parameters

PULL DATE ranges from 7/1/2006 TO 6/30/2007

Today: 08/12/2008

<i>Bus Type</i>	<i>Prod Code</i>	<i>Grade</i>	<i>Total Samples</i>	<i>Samples in Violation</i>	<i>%</i>	<i>Test Violation Total</i>	<i>Total Volume (Gals)</i>	<i>Total in Violation</i>
Other	BDB	B20LS	3	0	0.00	0	6,160	0
<b>Subtotal:</b>			<b>3</b>	<b>0</b>	<b>0.00</b>	<b>0</b>	<b>6,160</b>	<b>0</b>
	D	2D	1	1	100.00	1	500	500
<b>Subtotal:</b>			<b>1</b>	<b>1</b>	<b>100.00</b>	<b>1</b>	<b>500</b>	<b>500</b>
	G	MG	1	0	0.00	0	17,150	0
	G	RU	2	0	0.00	0	1,964	0
<b>Subtotal:</b>			<b>3</b>	<b>0</b>	<b>0.00</b>	<b>0</b>	<b>19,114</b>	<b>0</b>
<b>Total:</b>			<b>7</b>	<b>1</b>	<b>14.29</b>	<b>1</b>	<b>25,774</b>	<b>500</b>

## Test Violation Detail Listing

1	Flash Point	100.00%
---	-------------	---------

## Tennessee Department of Agriculture Business Type Violation Analysis Report

Data Sorted with All Parameters

PULL DATE ranges from 7/1/2006 TO 6/30/2007

Today: 08/12/2008

<i>Bus Type</i>	<i>Prod Code</i>	<i>Grade</i>	<i>Total Samples</i>	<i>Samples in Violation</i>	<i>%</i>	<i>Test Violation Total</i>	<i>Total Volume (Gals)</i>	<i>Total in Violation</i>
Retailer								
	AG	100LL	2	0	0.00	0	4,871	0
	<b>Subtotal:</b>		<b>2</b>	<b>0</b>	<b>0.00</b>	<b>0</b>	<b>4,871</b>	<b>0</b>
	BD	BDBS	8	5	62.50	6	16,002	7,076
	BD	BDBS15	1	0	0.00	0	6,913	0
	<b>Subtotal:</b>		<b>9</b>	<b>5</b>	<b>55.56</b>	<b>6</b>	<b>22,915</b>	<b>7,076</b>
	BDB	B10LS	1	0	0.00	0	1,110	0
	BDB	B20 ULSD	1	0	0.00	0	4,104	0
	BDB	B20LS	19	5	26.32	6	86,170	15,167
	BDB	B5 LS	3	1	33.33	1	4,575	2,222
	BDB	B5-20	7	0	0.00	0	56,721	0
	<b>Subtotal:</b>		<b>31</b>	<b>6</b>	<b>19.35</b>	<b>7</b>	<b>152,680</b>	<b>17,389</b>
	D	2D	111	2	1.80	2	538,456	17,183
	D	2D LS	1,213	43	3.54	44	5,885,313	48,298
	D	2D ULSD 1!	201	7	3.48	7	614,863	20,543
	<b>Subtotal:</b>		<b>1,525</b>	<b>52</b>	<b>3.41</b>	<b>53</b>	<b>7,038,632</b>	<b>86,024</b>
	E85	E-85	1	0	0.00	0	1,100	0
	<b>Subtotal:</b>		<b>1</b>	<b>0</b>	<b>0.00</b>	<b>0</b>	<b>1,100</b>	<b>0</b>
	G	MG	1,587	17	1.07	18	5,266,945	42,617
	G	PU	2,106	44	2.09	53	29,330,333	81,031
	G	RU	1,414	16	1.13	21	6,644,992	58,458
	<b>Subtotal:</b>		<b>5,107</b>	<b>77</b>	<b>1.51</b>	<b>92</b>	<b>41,242,271</b>	<b>182,106</b>
	JF	JA	1	0	0.00	0	6,375	0
	<b>Subtotal:</b>		<b>1</b>	<b>0</b>	<b>0.00</b>	<b>0</b>	<b>6,375</b>	<b>0</b>
	K	1K	374	6	1.60	6	351,936	2,311
	<b>Subtotal:</b>		<b>374</b>	<b>6</b>	<b>1.60</b>	<b>6</b>	<b>351,936</b>	<b>2,311</b>
	<b>Total:</b>		<b>7,050</b>	<b>146</b>	<b>2.07</b>	<b>164</b>	<b>48,820,780</b>	<b>294,906</b>

# Tennessee Department of Agriculture Business Type Violation Analysis Report

Data Sorted with All Parameters

PULL DATE ranges from 7/1/2006 TO 6/30/2007

Today: 08/12/2008

<i>Bus Type</i>	<i>Prod Code</i>	<i>Grade</i>	<i>Total Samples</i>	<i>Samples in Violation</i>	<i>%</i>	<i>Test Violation Total</i>	<i>Total Volume (Gals)</i>	<i>Total in Violation</i>
-----------------	------------------	--------------	----------------------	-----------------------------	----------	-----------------------------	----------------------------	---------------------------

## Test Violation Detail Listing

33				Octane		20.12%		
51				Flash Point		31.10%		
5				Oxygenates		3.05%		
19				Vapor Pressure		11.59%		
12				Workmanship (Appearance)		7.32%		
5				Saybolt Color		3.05%		
5				Sediment & Water		3.05%		
2				Sulfur		1.22%		
24				Distillation		14.63%		
1				Cetane Number		0.61%		
3				Glycerine		1.83%		
2				Biodiesel Blend		1.22%		
2				Oxidation		1.22%		

# Tennessee Department of Agriculture Business Type Violation Analysis Report

Data Sorted with All Parameters

PULL DATE ranges from 7/1/2006 TO 6/30/2007

Today: 08/12/2008

<i>Bus Type</i>	<i>Prod Code</i>	<i>Grade</i>	<i>Total Samples</i>	<i>Samples in Violation</i>	<i>%</i>	<i>Test Violation Total</i>	<i>Total Volume (Gals)</i>	<i>Total in Violation</i>
Terminal								
	AG	100LL	3	0	0.00	0	1,513,995	0
	<b>Subtotal:</b>		<b>3</b>	<b>0</b>	<b>0.00</b>	<b>0</b>	<b>1,513,995</b>	<b>0</b>
	BD	BDBS	13	7	53.85	10	123,948	90,828
	<b>Subtotal:</b>		<b>13</b>	<b>7</b>	<b>53.85</b>	<b>10</b>	<b>123,948</b>	<b>90,828</b>
	BDB	B10LS	1	0	0.00	0	16,668	0
	BDB	B20LS	1	0	0.00	0	4,800	0
	BDB	B5-20	1	0	0.00	0	9,422	0
	<b>Subtotal:</b>		<b>3</b>	<b>0</b>	<b>0.00</b>	<b>0</b>	<b>30,890</b>	<b>0</b>
	D	2D	20	0	0.00	0	13,145,839	0
	D	2D LS	38	0	0.00	0	25,686,284	0
	D	2D ULSD 1!	59	0	0.00	0	43,720,064	0
	<b>Subtotal:</b>		<b>117</b>	<b>0</b>	<b>0.00</b>	<b>0</b>	<b>82,552,187</b>	<b>0</b>
	G	PU	101	0	0.00	0	44,571,668	0
	G	RU	106	2	1.89	4	124,247,600	1,315,494
	<b>Subtotal:</b>		<b>207</b>	<b>2</b>	<b>0.97</b>	<b>4</b>	<b>168,819,268</b>	<b>1,315,494</b>
	JF	JA	2	0	0.00	0	264,242	0
	<b>Subtotal:</b>		<b>2</b>	<b>0</b>	<b>0.00</b>	<b>0</b>	<b>264,242</b>	<b>0</b>
	<b>Total:</b>		<b>345</b>	<b>9</b>	<b>2.61</b>	<b>14</b>	<b>253,304,530</b>	<b>1,406,322</b>

## Test Violation Detail Listing

1	Octane	7.14%
1	Flash Point	7.14%
1	Workmanship (Appearance)	7.14%
1	Sediment & Water	7.14%
4	Distillation	28.57%
1	Acid Number	7.14%
2	Glycerine	14.29%
3	Oxidation	21.43%

# Tennessee Department of Agriculture Inspection Type Violation Analysis Report

PULL DATE ranges from 7/1/2006 TO 6/30/2007

Today : 08/12/2008

<i>Insp Type</i>	<i>Prod Code</i>	<i>Grade</i>	<i>Total Samples</i>	<i>Samples in Violation</i>	<i>%</i>	<i>Test Violation Total</i>	<i>Total Volume (Gals)</i>	<i>Total in Violation</i>
Complaint	BDB	B20LS	1	1	100.00	1	2,255	2,255
<b>Subtotal:</b>			<b>1</b>	<b>1</b>	<b>100.00</b>	<b>1</b>	<b>2,255</b>	<b>2,255</b>
D	2D		2	0	0.00	0	6,658	0
D	2D LS		15	0	0.00	0	107,454	0
D	2D ULSD 1!		3	1	33.33	1	10,204	1,200
<b>Subtotal:</b>			<b>20</b>	<b>1</b>	<b>5.00</b>	<b>1</b>	<b>124,316</b>	<b>1,200</b>
G	MG		9	1	11.11	1	21,928	2,773
G	PU		22	1	4.55	1	23,516,828	2,965
G	RU		26	2	7.69	7	1,622,557	7,971
<b>Subtotal:</b>			<b>57</b>	<b>4</b>	<b>7.02</b>	<b>9</b>	<b>25,161,313</b>	<b>13,709</b>
K	1K		1	0	0.00	0	3,779	0
<b>Subtotal:</b>			<b>1</b>	<b>0</b>	<b>0.00</b>	<b>0</b>	<b>3,779</b>	<b>0</b>
<b>Total:</b>			<b>79</b>	<b>6</b>	<b>7.59</b>	<b>11</b>	<b>25,291,663</b>	<b>17,164</b>

## Test Violation Detail Listing

2	Octane	18.18%
1	Vapor Pressure	9.09%
1	Workmanship (Appearance)	9.09%
1	Sediment & Water	9.09%
5	Distillation	45.45%
1	Biodiesel Blend	9.09%



# Tennessee Department of Agriculture Inspection Type Violation Analysis Report

PULL DATE ranges from 7/1/2006 TO 6/30/2007

Today : 08/12/2008

<i>Insp Type</i>	<i>Prod Code</i>	<i>Grade</i>	<i>Total Samples</i>	<i>Samples in Violation</i>	<i>%</i>	<i>Test Violation Total</i>	<i>Total Volume (Gals)</i>	<i>Total in Violation</i>
Follow-Up	BD	BDBS	8	5	62.50	7	22,216	11,776
		<b>Subtotal:</b>	<b>8</b>	<b>5</b>	<b>62.50</b>	<b>7</b>	<b>22,216</b>	<b>11,776</b>
	BDB	B20LS	1	0	0.00	0	2,660	0
		<b>Subtotal:</b>	<b>1</b>	<b>0</b>	<b>0.00</b>	<b>0</b>	<b>2,660</b>	<b>0</b>
	D	2D	1	0	0.00	0	582	0
	D	2D LS	20	4	20.00	4	22,349	3,970
	D	2D ULSD 1!	3	0	0.00	0	12,114	0
		<b>Subtotal:</b>	<b>24</b>	<b>4</b>	<b>16.67</b>	<b>4</b>	<b>35,045</b>	<b>3,970</b>
	G	MG	12	0	0.00	0	22,232	0
	G	PU	14	1	7.14	1	18,508	1,008
	G	RU	10	0	0.00	0	1,577,675	0
		<b>Subtotal:</b>	<b>36</b>	<b>1</b>	<b>2.78</b>	<b>1</b>	<b>1,618,415</b>	<b>1,008</b>
	K	1K	2	0	0.00	0	475	0
		<b>Subtotal:</b>	<b>2</b>	<b>0</b>	<b>0.00</b>	<b>0</b>	<b>475</b>	<b>0</b>
		<b>Total:</b>	<b>71</b>	<b>10</b>	<b>14.08</b>	<b>12</b>	<b>1,678,811</b>	<b>16,754</b>

## Test Violation Detail Listing

1	Octane	8.33%
4	Flash Point	33.33%
1	Distillation	8.33%
1	Cetane Number	8.33%
3	Glycerine	25.00%
2	Oxidation	16.67%

# Tennessee Department of Agriculture Inspection Type Violation Analysis Report

PULL DATE ranges from 7/1/2006 TO 6/30/2007

Today : 08/12/2008

<i>Insp Type</i>	<i>Prod Code</i>	<i>Grade</i>	<i>Total Samples</i>	<i>Samples in Violation</i>	<i>%</i>	<i>Test Violation Total</i>	<i>Total Volume (Gals)</i>	<i>Total in Violation</i>
Office Request								
	BD	BDBS	6	2	33.33	2	15,001	7,428
<b>Subtotal:</b>			<b>6</b>	<b>2</b>	<b>33.33</b>	<b>2</b>	<b>15,001</b>	<b>7,428</b>
	BDB	B20LS	9	1	11.11	1	44,040	2,327
	BDB	B5-20 ULSI	1	1	100.00	1		0
<b>Subtotal:</b>			<b>10</b>	<b>2</b>	<b>20.00</b>	<b>2</b>	<b>44,040</b>	<b>2,327</b>
	D	2D	1	0	0.00	0	1,405	0
	D	2D LS	1	0	0.00	0	284	0
	D	2D ULSD 1!	1	0	0.00	0	7,406	0
<b>Subtotal:</b>			<b>3</b>	<b>0</b>	<b>0.00</b>	<b>0</b>	<b>9,095</b>	<b>0</b>
	G	MG	3	0	0.00	0	9,720	0
	G	PU	4	1	25.00	1	17,977	4,206
	G	RU	2	0	0.00	0	12,139	0
<b>Subtotal:</b>			<b>9</b>	<b>1</b>	<b>11.11</b>	<b>1</b>	<b>39,836</b>	<b>4,206</b>
	K	1K	1	0	0.00	0	7,466	0
<b>Subtotal:</b>			<b>1</b>	<b>0</b>	<b>0.00</b>	<b>0</b>	<b>7,466</b>	<b>0</b>
<b>Total:</b>			<b>29</b>	<b>5</b>	<b>17.24</b>	<b>5</b>	<b>115,438</b>	<b>13,961</b>

## Test Violation Detail Listing

1	Octane	20.00%
1	Flash Point	20.00%
1	Biodiesel Blend	20.00%
2	Oxidation	40.00%

# Tennessee Department of Agriculture Inspection Type Violation Analysis Report

PULL DATE ranges from 7/1/2006 TO 6/30/2007

Today : 08/12/2008

<i>Insp Type</i>	<i>Prod Code</i>	<i>Grade</i>	<i>Total Samples</i>	<i>Samples in Violation</i>	<i>%</i>	<i>Test Violation Total</i>	<i>Total Volume (Gals)</i>	<i>Total in Violation</i>
Random	AG	100LL	66	0	0.00	0	1,845,051	0
	<b>Subtotal:</b>		<b>66</b>	<b>0</b>	<b>0.00</b>	<b>0</b>	<b>1,845,051</b>	<b>0</b>
	BD	BDBS	24	11	45.83	27	163,117	104,422
	BD	BDBS15	2	0	0.00	0	12,113	0
	<b>Subtotal:</b>		<b>26</b>	<b>11</b>	<b>42.31</b>	<b>27</b>	<b>175,230</b>	<b>104,422</b>
	BDB	B10LS	3	0	0.00	0	21,908	0
	BDB	B20 ULSD	1	0	0.00	0	4,104	0
	BDB	B20LS	14	4	28.57	5	56,049	17,396
	BDB	B5 LS	4	1	25.00	1	5,995	2,222
	BDB	B5-20	9	0	0.00	0	82,652	0
	<b>Subtotal:</b>		<b>31</b>	<b>5</b>	<b>16.13</b>	<b>6</b>	<b>170,708</b>	<b>19,618</b>
	D	2D	165	4	2.42	4	13,853,465	26,460
	D	2D LS	1,253	40	3.19	41	31,648,851	46,786
	D	2D ULSD 1!	265	6	2.26	6	44,378,744	19,343
	<b>Subtotal:</b>		<b>1683</b>	<b>50</b>	<b>2.97</b>	<b>51</b>	<b>89,881,060</b>	<b>92,589</b>
	E85	E-85	1	0	0.00	0	1,100	0
	<b>Subtotal:</b>		<b>1</b>	<b>0</b>	<b>0.00</b>	<b>0</b>	<b>1,100</b>	<b>0</b>
	G	MG	1,616	18	1.11	19	5,506,803	42,767
	G	PU	2,221	42	1.89	51	50,508,257	74,452
	G	RU	1,552	18	1.16	20	127,980,533	1,368,099
	<b>Subtotal:</b>		<b>5389</b>	<b>78</b>	<b>1.45</b>	<b>90</b>	<b>183,995,594</b>	<b>1,485,318</b>

# Tennessee Department of Agriculture Inspection Type Violation Analysis Report

PULL DATE ranges from 7/1/2006 TO 6/30/2007

Today : 08/12/2008

<i>Insp Type</i>	<i>Prod Code</i>	<i>Grade</i>	<i>Total Samples</i>	<i>Samples in Violation</i>	<i>%</i>	<i>Test Violation Total</i>	<i>Total Volume (Gals)</i>	<i>Total in Violation</i>
	JF	JA	49	0	0.00	0	604,736	0
		<b>Subtotal:</b>	<b>49</b>	<b>0</b>	<b>0.00</b>	<b>0</b>	<b>604,736</b>	<b>0</b>
	K	1K	373	6	1.61	6	350,296	2,311
		<b>Subtotal:</b>	<b>373</b>	<b>6</b>	<b>1.61</b>	<b>6</b>	<b>350,296</b>	<b>2,311</b>
	LPG	SD	2	0	0.00	0	15,700	0
		<b>Subtotal:</b>	<b>2</b>	<b>0</b>	<b>0.00</b>	<b>0</b>	<b>15,700</b>	<b>0</b>
		<b>Total:</b>	<b>7620</b>	<b>150</b>	<b>1.97</b>	<b>180</b>	<b>277,039,475</b>	<b>1,704,258</b>

## Test Violation Detail Listing

31	Octane	17.22%
53	Flash Point	29.44%
5	Oxygenates	2.78%
20	Vapor Pressure	11.11%
12	Workmanship (Appearance)	6.67%
5	Saybolt Color	2.78%
5	Sediment & Water	2.78%
3	Sulfur	1.67%
26	Distillation	14.44%
1	Acid Number	0.56%
8	Glycerine	4.44%
1	Viscosity	0.56%
2	Sulfated Ash	1.11%
1	Carbon Residue	0.56%
2	Phosphorous	1.11%
2	Biodiesel Blend	1.11%
3	Oxidation	1.67%

# Tennessee Department of Agriculture County Summary Short Report

PULL DATE ranges from 7/1/2006 TO 6/30/2007

Today: 08/12/2008

<i>County</i>	<i>Prod Code</i>	<i>Total Samples</i>	<i>Samples in Violation</i>	<i>%</i>	<i>Test Violation Total</i>	<i>Total Volume (Gals)</i>	<i>Total in Violation</i>
<b>Anderson</b>							
	D	18	0	0.00	0	58,708.00	0
	G	78	1	1.28	1	310,726.00	2,871
	K	1	0	0.00	0	505.00	0
	<b>Total:</b>	<b>97</b>	<b>1</b>	<b>1.03</b>	<b>1</b>	<b>369,939.00</b>	<b>2,871</b>
<b>Bedford</b>							
	AG	1	0	0.00	0	4,327.00	0
	D	14	0	0.00	0	60,645.00	0
	G	51	0	0.00	0	150,162.00	0
	JF	1	0	0.00	0	9,785.00	0
	K	10	0	0.00	0	5,095.00	0
	<b>Total:</b>	<b>77</b>	<b>0</b>	<b>0.00</b>	<b>0</b>	<b>230,014.00</b>	<b>0</b>
<b>Benton</b>							
	AG	1	0	0.00	0	6,071.00	0
	D	9	2	22.22	2	29,717.00	4,260
	G	22	2	9.09	2	50,508.00	4,195
	JF	1	0	0.00	0	8,247.00	0
	K	3	0	0.00	0	2,464.00	0
	<b>Total:</b>	<b>36</b>	<b>4</b>	<b>11.11</b>	<b>4</b>	<b>97,007.00</b>	<b>8,455</b>
<b>Bledsoe</b>							
	D	6	0	0.00	0	30,851.00	0
	G	22	1	4.55	1	61,295.00	2,000
	K	2	1	50.00	1	175.00	75
	<b>Total:</b>	<b>30</b>	<b>2</b>	<b>6.67</b>	<b>2</b>	<b>92,321.00</b>	<b>2,075</b>

## Tennessee Department of Agriculture County Summary Short Report

PULL DATE ranges from 7/1/2006 TO 6/30/2007

Today: 08/12/2008

<i>County</i>	<i>Prod Code</i>	<i>Total Samples</i>	<i>Samples in Violation</i>	<i>%</i>	<i>Test Violation Total</i>	<i>Total Volume (Gals)</i>	<i>Total in Violation</i>
<b>Blount</b>							
	BD	3	1	33.33	1	18,913.00	6,800
	BDB	2	0	0.00	0	4,091.00	0
	D	33	2	6.06	2	69,882.00	3,346
	G	101	0	0.00	0	344,279.00	0
	K	1	0	0.00	0	426.00	0
	<b>Total:</b>	<b>140</b>	<b>3</b>	<b>2.14</b>	<b>3</b>	<b>437,591.00</b>	<b>10,146</b>
<b>Bradley</b>							
	AG	1	0	0.00	0	4,000.00	0
	D	27	1	3.70	1	76,003.00	700
	G	111	0	0.00	0	329,857.00	0
	K	10	0	0.00	0	13,798.00	0
	LPG	1	0	0.00	0	700.00	0
	<b>Total:</b>	<b>150</b>	<b>1</b>	<b>0.67</b>	<b>1</b>	<b>424,358.00</b>	<b>700</b>
<b>Campbell</b>							
	D	9	0	0.00	0	26,143.00	0
	G	58	0	0.00	0	244,668.00	0
	K	1	0	0.00	0	236.00	0
	<b>Total:</b>	<b>68</b>	<b>0</b>	<b>0.00</b>	<b>0</b>	<b>271,047.00</b>	<b>0</b>
<b>Cannon</b>							
	D	5	0	0.00	0	5,736.00	0
	G	13	0	0.00	0	45,255.00	0
	K	2	0	0.00	0	328.00	0
	<b>Total:</b>	<b>20</b>	<b>0</b>	<b>0.00</b>	<b>0</b>	<b>51,319.00</b>	<b>0</b>

## Tennessee Department of Agriculture County Summary Short Report

PULL DATE ranges from 7/1/2006 TO 6/30/2007

Today: 08/12/2008

<i>County</i>	<i>Prod Code</i>	<i>Total Samples</i>	<i>Samples in Violation</i>	<i>%</i>	<i>Test Violation Total</i>	<i>Total Volume (Gals)</i>	<i>Total in Violation</i>
<b>Carroll</b>							
	BD	1	0	0.00	0	4,500.00	0
	D	8	0	0.00	0	14,720.00	0
	G	32	0	0.00	0	97,271.00	0
	K	8	0	0.00	0	5,873.00	0
	<b>Total:</b>	<b>49</b>	<b>0</b>	<b>0.00</b>	<b>0</b>	<b>122,364.00</b>	<b>0</b>
<b>Carter</b>							
	D	13	0	0.00	0	25,891.00	0
	G	48	3	6.25	3	131,269.00	2,687
	K	7	0	0.00	0	3,318.00	0
	<b>Total:</b>	<b>68</b>	<b>3</b>	<b>4.41</b>	<b>3</b>	<b>160,478.00</b>	<b>2,687</b>
<b>Cheatham</b>							
	D	25	1	4.00	1	61,770.00	581
	G	39	0	0.00	0	94,129.10	0
	K	5	0	0.00	0	3,604.00	0
	<b>Total:</b>	<b>69</b>	<b>1</b>	<b>1.45</b>	<b>1</b>	<b>159,503.10</b>	<b>581</b>
<b>Chester</b>							
	BD	1	0	0.00	0	3,000.00	0
	BDB	1	0	0.00	0	1,420.00	0
	D	1	0	0.00	0	4,789.00	0
	G	15	1	6.67	1	28,339.00	1,118
	<b>Total:</b>	<b>18</b>	<b>1</b>	<b>5.56</b>	<b>1</b>	<b>37,548.00</b>	<b>1,118</b>
<b>Claiborne</b>							
	D	19	3	15.79	3	35,457.90	3,082
	G	34	0	0.00	0	70,555.50	0

## Tennessee Department of Agriculture County Summary Short Report

PULL DATE ranges from 7/1/2006 TO 6/30/2007

Today: 08/12/2008

<i>County</i>	<i>Prod Code</i>	<i>Total Samples</i>	<i>Samples in Violation</i>	<i>%</i>	<i>Test Violation Total</i>	<i>Total Volume (Gals)</i>	<i>Total in Violation</i>
	K	1	0	0.00	0	47.00	0
	<b>Total:</b>	<b>54</b>	<b>3</b>	<b>5.56</b>	<b>3</b>	<b>106,060.40</b>	<b>3,082</b>
<b>Clay</b>	D	5	0	0.00	0	5,158.00	0
	G	17	0	0.00	0	23,384.00	0
	K	1	0	0.00	0	1,833.00	0
	<b>Total:</b>	<b>23</b>	<b>0</b>	<b>0.00</b>	<b>0</b>	<b>30,375.00</b>	<b>0</b>
<b>Cocke</b>	D	14	0	0.00	0	39,096.00	0
	G	68	1	1.47	1	199,263.00	672
	<b>Total:</b>	<b>82</b>	<b>1</b>	<b>1.22</b>	<b>1</b>	<b>238,359.00</b>	<b>672</b>
<b>Coffee</b>	AG	1	0	0.00	0	1,112.00	0
	BD	3	2	66.67	4	3,240.00	2,800
	BDB	3	0	0.00	0	11,587.00	0
	D	19	0	0.00	0	78,570.00	0
	G	57	0	0.00	0	210,043.00	0
	JF	1	0	0.00	0	2,224.00	0
	K	10	0	0.00	0	9,119.00	0
	<b>Total:</b>	<b>94</b>	<b>2</b>	<b>2.13</b>	<b>4</b>	<b>315,895.00</b>	<b>2,800</b>
<b>Crockett</b>	BD	1	0	0.00	0	4,500.00	0
	D	3	0	0.00	0	13,922.00	0
	G	21	0	0.00	0	42,136.00	0



## Tennessee Department of Agriculture County Summary Short Report

PULL DATE ranges from 7/1/2006 TO 6/30/2007

Today: 08/12/2008

<i>County</i>	<i>Prod Code</i>	<i>Total Samples</i>	<i>Samples in Violation</i>	<i>%</i>	<i>Test Violation Total</i>	<i>Total Volume (Gals)</i>	<i>Total in Violation</i>
	<b>Total:</b>	<b>25</b>	<b>0</b>	<b>0.00</b>	<b>0</b>	<b>60,558.00</b>	<b>0</b>
<b>Cumberland</b>	AG	2	0	0.00	0	2,477.00	0
	D	20	1	5.00	1	42,306.00	1,113
	G	58	2	3.45	2	124,906.00	2,834
	JF	2	0	0.00	0	7,526.00	0
	K	1	0	0.00	0	1,221.00	0
	<b>Total:</b>	<b>83</b>	<b>3</b>	<b>3.61</b>	<b>3</b>	<b>178,436.00</b>	<b>3,947</b>
<b>Davidson</b>	AG	3	0	0.00	0	23,275.00	0
	BDB	5	2	40.00	2	10,938.00	3,066
	D	161	5	3.11	5	27,675,594.00	9,078
	G	436	3	0.69	3	98,672,790.00	20,069
	JF	3	0	0.00	0	34,828.00	0
	K	24	0	0.00	0	34,626.00	0
	<b>Total:</b>	<b>632</b>	<b>10</b>	<b>1.58</b>	<b>10</b>	<b>126,452,051.00</b>	<b>32,213</b>
<b>Decatur</b>	BD	1	0	0.00	0	2,000.00	0
	D	7	0	0.00	0	32,426.00	0
	G	23	0	0.00	0	48,977.00	0
	<b>Total:</b>	<b>31</b>	<b>0</b>	<b>0.00</b>	<b>0</b>	<b>83,403.00</b>	<b>0</b>
<b>Dekalb</b>	D	5	0	0.00	0	8,051.00	0
	G	31	0	0.00	0	68,881.00	0

## Tennessee Department of Agriculture County Summary Short Report

PULL DATE ranges from 7/1/2006 TO 6/30/2007

Today: 08/12/2008

<i>County</i>	<i>Prod Code</i>	<i>Total Samples</i>	<i>Samples in Violation</i>	<i>%</i>	<i>Test Violation Total</i>	<i>Total Volume (Gals)</i>	<i>Total in Violation</i>
	K	3	1	33.33	1	1,687.00	870
	<b>Total:</b>	<b>39</b>	<b>1</b>	<b>2.56</b>	<b>1</b>	<b>78,619.00</b>	<b>870</b>
<b>Dickson</b>	AG	1	0	0.00	0	1,167.10	0
	D	36	3	8.33	3	121,189.00	4,905
	G	58	0	0.00	0	159,801.00	0
	JF	1	0	0.00	0	3,411.20	0
	K	6	0	0.00	0	3,380.00	0
	<b>Total:</b>	<b>102</b>	<b>3</b>	<b>2.94</b>	<b>3</b>	<b>288,948.30</b>	<b>4,905</b>
<b>Dyer</b>	AG	2	0	0.00	0	12,266.00	0
	BD	2	0	0.00	0	786.00	0
	BDB	1	0	0.00	0	4,130.00	0
	D	12	0	0.00	0	27,742.00	0
	G	45	0	0.00	0	98,743.00	0
	JF	2	0	0.00	0	13,035.00	0
	K	2	0	0.00	0	889.00	0
	<b>Total:</b>	<b>66</b>	<b>0</b>	<b>0.00</b>	<b>0</b>	<b>157,591.00</b>	<b>0</b>
<b>Fayette</b>	AG	1	0	0.00	0	800.00	0
	D	9	0	0.00	0	38,932.00	0
	G	27	1	3.70	1	40,950.00	440
	<b>Total:</b>	<b>37</b>	<b>1</b>	<b>2.70</b>	<b>1</b>	<b>80,682.00</b>	<b>440</b>

## Tennessee Department of Agriculture County Summary Short Report

PULL DATE ranges from 7/1/2006 TO 6/30/2007

Today: 08/12/2008

<i>County</i>	<i>Prod Code</i>	<i>Total Samples</i>	<i>Samples in Violation</i>	<i>%</i>	<i>Test Violation Total</i>	<i>Total Volume (Gals)</i>	<i>Total in Violation</i>
<b>Fentress</b>							
	D	11	2	18.18	2	35,740.00	9,985
	G	26	0	0.00	0	60,216.00	0
	<b>Total:</b>	<b>37</b>	<b>2</b>	<b>5.41</b>	<b>2</b>	<b>95,956.00</b>	<b>9,985</b>
<b>Franklin</b>							
	AG	2	0	0.00	0	9,147.00	0
	BDB	3	0	0.00	0	25,142.00	0
	D	11	0	0.00	0	25,637.00	0
	G	50	0	0.00	0	131,052.00	0
	JF	1	0	0.00	0	2,194.00	0
	K	5	0	0.00	0	3,251.00	0
	<b>Total:</b>	<b>72</b>	<b>0</b>	<b>0.00</b>	<b>0</b>	<b>196,423.00</b>	<b>0</b>
<b>Gibson</b>							
	AG	1	0	0.00	0	540.00	0
	D	16	0	0.00	0	61,147.00	0
	G	47	0	0.00	0	122,704.00	0
	K	4	0	0.00	0	3,792.00	0
	<b>Total:</b>	<b>68</b>	<b>0</b>	<b>0.00</b>	<b>0</b>	<b>188,183.00</b>	<b>0</b>
<b>Giles</b>							
	AG	1	0	0.00	0	1,000.00	0
	BD	6	3	50.00	3	8,313.00	3,900
	D	19	0	0.00	0	73,399.00	0
	G	42	0	0.00	0	126,464.60	0
	JF	1	0	0.00	0	4,000.00	0

## Tennessee Department of Agriculture County Summary Short Report

PULL DATE ranges from 7/1/2006 TO 6/30/2007

Today: 08/12/2008

<i>County</i>	<i>Prod Code</i>	<i>Total Samples</i>	<i>Samples in Violation</i>	<i>%</i>	<i>Test Violation Total</i>	<i>Total Volume (Gals)</i>	<i>Total in Violation</i>
	K	1	0	0.00	0	1,109.00	0
	<b>Total:</b>	<b>70</b>	<b>3</b>	<b>4.29</b>	<b>3</b>	<b>214,285.60</b>	<b>3,900</b>
<b>Grainger</b>	D	7	0	0.00	0	15,727.00	0
	G	25	0	0.00	0	35,945.00	0
	K	1	0	0.00	0	427.00	0
	<b>Total:</b>	<b>33</b>	<b>0</b>	<b>0.00</b>	<b>0</b>	<b>52,099.00</b>	<b>0</b>
<b>Greene</b>	AG	1	0	0.00	0	2,683.00	0
	D	40	2	5.00	2	102,117.00	3,955
	G	91	1	1.10	4	267,729.00	7,455
	K	1	0	0.00	0	1,296.00	0
	<b>Total:</b>	<b>133</b>	<b>3</b>	<b>2.26</b>	<b>6</b>	<b>373,825.00</b>	<b>11,410</b>
<b>Grundy</b>	D	5	0	0.00	0	5,355.00	0
	G	22	1	4.55	1	42,925.00	272
	K	6	1	16.67	1	2,662.00	371
	<b>Total:</b>	<b>33</b>	<b>2</b>	<b>6.06</b>	<b>2</b>	<b>50,942.00</b>	<b>643</b>
<b>Hamblen</b>	AG	1	0	0.00	0	8,000.00	0
	D	26	1	3.85	1	83,866.00	649
	G	57	0	0.00	0	207,102.00	0
	<b>Total:</b>	<b>84</b>	<b>1</b>	<b>1.19</b>	<b>1</b>	<b>298,968.00</b>	<b>649</b>
<b>Hamilton</b>	AG	2	0	0.00	0	3,153.00	0

## Tennessee Department of Agriculture County Summary Short Report

PULL DATE ranges from 7/1/2006 TO 6/30/2007

Today: 08/12/2008

<i>County</i>	<i>Prod Code</i>	<i>Total Samples</i>	<i>Samples in Violation</i>	<i>%</i>	<i>Test Violation Total</i>	<i>Total Volume (Gals)</i>	<i>Total in Violation</i>
	BD	1	0	0.00	0	8,000.00	0
	BDB	4	1	25.00	2	24,239.00	4,574
	D	73	0	0.00	0	21,548,773.00	0
	G	336	2	0.60	2	35,804,485.00	7,527
	JF	1	0	0.00	0	3,500.00	0
	K	14	1	7.14	1	11,189.00	500
	<b>Total:</b>	<b>431</b>	<b>4</b>	<b>0.93</b>	<b>5</b>	<b>57,403,339.00</b>	<b>12,601</b>
<b>Hancock</b>							
	D	2	0	0.00	0	9,670.00	0
	G	6	0	0.00	0	8,960.00	0
	<b>Total:</b>	<b>8</b>	<b>0</b>	<b>0.00</b>	<b>0</b>	<b>18,630.00</b>	<b>0</b>
<b>Hardeman</b>							
	AG	1	0	0.00	0	500.00	0
	D	15	3	20.00	3	45,266.00	2,409
	G	44	0	0.00	0	66,446.00	0
	K	1	0	0.00	0	1,766.00	0
	<b>Total:</b>	<b>61</b>	<b>3</b>	<b>4.92</b>	<b>3</b>	<b>113,978.00</b>	<b>2,409</b>
<b>Hardin</b>							
	AG	2	0	0.00	0	9,847.00	0
	BD	1	0	0.00	0	1,000.00	0
	D	10	2	20.00	2	38,562.00	3,055
	G	43	1	2.33	1	140,852.00	441
	JF	2	0	0.00	0	14,125.00	0

## Tennessee Department of Agriculture County Summary Short Report

PULL DATE ranges from 7/1/2006 TO 6/30/2007

Today: 08/12/2008

<i>County</i>	<i>Prod Code</i>	<i>Total Samples</i>	<i>Samples in Violation</i>	<i>%</i>	<i>Test Violation Total</i>	<i>Total Volume (Gals)</i>	<i>Total in Violation</i>
	K	3	0	0.00	0	4,571.00	0
	<b>Total:</b>	<b>61</b>	<b>3</b>	<b>4.92</b>	<b>3</b>	<b>208,957.00</b>	<b>3,496</b>
<b>Hawkins</b>	AG	1	0	0.00	0	3,000.00	0
	D	14	0	0.00	0	29,314.00	0
	G	35	3	8.57	3	103,916.00	11,691
	K	5	0	0.00	0	2,742.00	0
	<b>Total:</b>	<b>55</b>	<b>3</b>	<b>5.45</b>	<b>3</b>	<b>138,972.00</b>	<b>11,691</b>
<b>Haywood</b>	D	6	0	0.00	0	35,713.00	0
	G	20	0	0.00	0	40,188.00	0
	K	1	0	0.00	0	3,523.00	0
	<b>Total:</b>	<b>27</b>	<b>0</b>	<b>0.00</b>	<b>0</b>	<b>79,424.00</b>	<b>0</b>
<b>Henderson</b>	AG	2	0	0.00	0	8,821.00	0
	BDB	1	1	100.00	1	2,222.00	2,222
	D	10	0	0.00	0	62,407.00	0
	G	36	0	0.00	0	126,930.00	0
	JF	2	0	0.00	0	16,471.00	0
	K	3	0	0.00	0	8,126.00	0
	<b>Total:</b>	<b>54</b>	<b>1</b>	<b>1.85</b>	<b>1</b>	<b>224,977.00</b>	<b>2,222</b>
<b>Henry</b>	AG	2	0	0.00	0	15,056.00	0
	D	12	0	0.00	0	70,629.00	0

## Tennessee Department of Agriculture County Summary Short Report

PULL DATE ranges from 7/1/2006 TO 6/30/2007

Today: 08/12/2008

<i>County</i>	<i>Prod Code</i>	<i>Total Samples</i>	<i>Samples in Violation</i>	<i>%</i>	<i>Test Violation Total</i>	<i>Total Volume (Gals)</i>	<i>Total in Violation</i>
	G	40	2	5.00	2	165,597.00	1,730
	JF	2	0	0.00	0	15,178.00	0
	K	3	0	0.00	0	4,345.00	0
	<b>Total:</b>	<b>59</b>	<b>2</b>	<b>3.39</b>	<b>2</b>	<b>270,805.00</b>	<b>1,730</b>
<b>Hickman</b>	AG	1	0	0.00	0	485.00	0
	D	5	0	0.00	0	18,357.00	0
	G	21	0	0.00	0	73,297.30	0
	K	3	0	0.00	0	1,194.00	0
	<b>Total:</b>	<b>30</b>	<b>0</b>	<b>0.00</b>	<b>0</b>	<b>93,333.30</b>	<b>0</b>
<b>Houston</b>	D	8	1	12.50	1	7,779.00	324
	G	10	0	0.00	0	12,306.00	0
	K	1	0	0.00	0	324.00	0
	<b>Total:</b>	<b>19</b>	<b>1</b>	<b>5.26</b>	<b>1</b>	<b>20,409.00</b>	<b>324</b>
<b>Humphreys</b>	AG	1	0	0.00	0	1,583.00	0
	D	10	0	0.00	0	53,983.00	0
	G	30	0	0.00	0	76,343.00	0
	JF	1	0	0.00	0	3,136.00	0
	K	1	0	0.00	0	1,909.00	0
	<b>Total:</b>	<b>43</b>	<b>0</b>	<b>0.00</b>	<b>0</b>	<b>136,954.00</b>	<b>0</b>
<b>Jackson</b>	D	3	0	0.00	0	789.00	0

## Tennessee Department of Agriculture County Summary Short Report

PULL DATE ranges from 7/1/2006 TO 6/30/2007

Today: 08/12/2008

<i>County</i>	<i>Prod Code</i>	<i>Total Samples</i>	<i>Samples in Violation</i>	<i>%</i>	<i>Test Violation Total</i>	<i>Total Volume (Gals)</i>	<i>Total in Violation</i>
	G	10	0	0.00	0	6,199.00	0
	K	1	0	0.00	0	107.00	0
	<b>Total:</b>	<b>14</b>	<b>0</b>	<b>0.00</b>	<b>0</b>	<b>7,095.00</b>	<b>0</b>
<b>Jefferson</b>	D	17	0	0.00	0	145,874.00	0
	G	40	1	2.50	1	182,985.00	1,300
	K	1	0	0.00	0	1,014.00	0
	<b>Total:</b>	<b>58</b>	<b>1</b>	<b>1.72</b>	<b>1</b>	<b>329,873.00</b>	<b>1,300</b>
<b>Johnson</b>	D	7	0	0.00	0	9,847.00	0
	G	17	0	0.00	0	39,613.00	0
	K	3	0	0.00	0	3,348.00	0
	<b>Total:</b>	<b>27</b>	<b>0</b>	<b>0.00</b>	<b>0</b>	<b>52,808.00</b>	<b>0</b>
<b>Knox</b>	AG	1	0	0.00	0	0.00	0
	BD	3	2	66.67	10	20,414.00	13,214
	BDB	5	2	40.00	2	13,579.00	9,138
	D	128	4	3.13	5	23,715,204.00	8,656
	E85	1	0	0.00	0	1,100.00	0
	G	330	10	3.03	12	46,721,809.00	1,362,551
	K	23	0	0.00	0	41,818.00	0
	<b>Total:</b>	<b>491</b>	<b>18</b>	<b>3.67</b>	<b>29</b>	<b>70,513,924.00</b>	<b>1,393,559</b>
<b>Lake</b>	D	4	0	0.00	0	9,155.00	0



## Tennessee Department of Agriculture County Summary Short Report

PULL DATE ranges from 7/1/2006 TO 6/30/2007

Today: 08/12/2008

<i>County</i>	<i>Prod Code</i>	<i>Total Samples</i>	<i>Samples in Violation</i>	<i>%</i>	<i>Test Violation Total</i>	<i>Total Volume (Gals)</i>	<i>Total in Violation</i>
	G	7	0	0.00	0	13,740.00	0
	K	1	0	0.00	0	346.00	0
	<b>Total:</b>	<b>12</b>	<b>0</b>	<b>0.00</b>	<b>0</b>	<b>23,241.00</b>	<b>0</b>
<b>Lauderdale</b>	BDB	2	0	0.00	0	2,353.00	0
	D	7	0	0.00	0	18,964.00	0
	G	33	0	0.00	0	75,152.00	0
	K	1	0	0.00	0	442.00	0
	<b>Total:</b>	<b>43</b>	<b>0</b>	<b>0.00</b>	<b>0</b>	<b>96,911.00</b>	<b>0</b>
<b>Lawrence</b>	AG	1	0	0.00	0	5,313.00	0
	BD	1	0	0.00	0	2,750.00	0
	D	21	1	4.76	1	35,300.00	460
	G	58	1	1.72	1	558,866.60	829
	JF	1	0	0.00		7,961.00	0
	K	3	0	0.00	0	1,198.00	0
	<b>Total:</b>	<b>85</b>	<b>2</b>	<b>2.35</b>	<b>2</b>	<b>611,388.60</b>	<b>1,289</b>
<b>Lewis</b>	D	4	0	0.00	0	13,244.00	0
	G	11	0	0.00	0	55,967.00	0
	K	2	0	0.00	0	1,236.00	0
	<b>Total:</b>	<b>17</b>	<b>0</b>	<b>0.00</b>	<b>0</b>	<b>70,447.00</b>	<b>0</b>
<b>Lincoln</b>	AG	1	0	0.00	0	8,094.50	0

## Tennessee Department of Agriculture County Summary Short Report

PULL DATE ranges from 7/1/2006 TO 6/30/2007

Today: 08/12/2008

<i>County</i>	<i>Prod Code</i>	<i>Total Samples</i>	<i>Samples in Violation</i>	<i>%</i>	<i>Test Violation Total</i>	<i>Total Volume (Gals)</i>	<i>Total in Violation</i>
	D	12	2	16.67	2	26,138.00	388
	G	45	1	2.22	1	98,444.00	754
	JF	1	0	0.00	0	3,605.50	0
	K	11	0	0.00	0	8,272.00	0
	<b>Total:</b>	<b>70</b>	<b>3</b>	<b>4.29</b>	<b>3</b>	<b>144,554.00</b>	<b>1,142</b>
<b>Loudon</b>	D	20	1	5.00	1	64,778.00	994
	G	58	0	0.00	0	155,231.00	0
	K	2	0	0.00	0	3,368.00	0
	<b>Total:</b>	<b>80</b>	<b>1</b>	<b>1.25</b>	<b>1</b>	<b>223,377.00</b>	<b>994</b>
<b>McMinn</b>	AG	1	0	0.00	0	4,800.00	0
	BDB	2	0	0.00	0	13,776.00	0
	D	22	1	4.55	1	77,191.00	913
	G	65	0	0.00	0	194,750.00	0
	JF	1	0	0.00	0	6,270.00	0
	K	9	0	0.00	0	9,916.00	0
	<b>Total:</b>	<b>100</b>	<b>1</b>	<b>1.00</b>	<b>1</b>	<b>306,703.00</b>	<b>913</b>
<b>McNairy</b>	AG	2	0	0.00	0	3,133.00	0
	D	6	0	0.00	0	9,796.00	0
	G	25	2	8.00	2	36,976.00	2,869
	JF	2	0	0.00	0	6,317.00	0

## Tennessee Department of Agriculture County Summary Short Report

PULL DATE ranges from 7/1/2006 TO 6/30/2007

Today: 08/12/2008

<i>County</i>	<i>Prod Code</i>	<i>Total Samples</i>	<i>Samples in Violation</i>	<i>%</i>	<i>Test Violation Total</i>	<i>Total Volume (Gals)</i>	<i>Total in Violation</i>
	<b>Total:</b>	<b>35</b>	<b>2</b>	<b>5.71</b>	<b>2</b>	<b>56,222.00</b>	<b>2,869</b>
<b>Macon</b>	AG	1	0	0.00	0	4,800.00	0
	D	3	0	0.00	0	3,436.00	0
	G	19	0	0.00	0	46,665.00	0
	K	5	0	0.00	0	4,559.00	0
	<b>Total:</b>	<b>28</b>	<b>0</b>	<b>0.00</b>	<b>0</b>	<b>59,460.00</b>	<b>0</b>
<b>Madison</b>	AG	2	0	0.00	0	12,239.00	0
	D	35	1	2.86	1	177,833.00	3,459
	G	118	2	1.69	2	317,625.00	2,942
	JF	2	0	0.00	0	11,796.00	0
	<b>Total:</b>	<b>157</b>	<b>3</b>	<b>1.91</b>	<b>3</b>	<b>519,493.00</b>	<b>6,401</b>
<b>Marion</b>	AG	1	0	0.00	0	4,420.00	0
	D	12	0	0.00	0	57,972.00	0
	G	36	1	2.78	1	145,221.00	2,256
	K	7	0	0.00	0	7,256.00	0
	<b>Total:</b>	<b>56</b>	<b>1</b>	<b>1.79</b>	<b>1</b>	<b>214,869.00</b>	<b>2,256</b>
<b>Marshall</b>	AG	1	0	0.00	0	8,520.00	0
	BD	3	1	33.33	2	10,300.00	5,000
	D	17	1	5.88	1	50,747.00	221
	G	39	0	0.00	0	233,740.00	0

## Tennessee Department of Agriculture County Summary Short Report

PULL DATE ranges from 7/1/2006 TO 6/30/2007

Today: 08/12/2008

<i>County</i>	<i>Prod Code</i>	<i>Total Samples</i>	<i>Samples in Violation</i>	<i>%</i>	<i>Test Violation Total</i>	<i>Total Volume (Gals)</i>	<i>Total in Violation</i>
	JF	1	0	0.00	0	6,500.00	0
	K	3	0	0.00	0	1,765.00	0
	<b>Total:</b>	<b>64</b>	<b>2</b>	<b>3.13</b>	<b>3</b>	<b>311,572.00</b>	<b>5,221</b>
<b>Maury</b>	AG	1	0	0.00	0	2,178.00	0
	D	22	0	0.00	0	90,439.00	0
	G	72	1	1.39	1	488,177.00	4,580
	JF	1	0	0.00	0	5,625.00	0
	K	3	0	0.00	0	3,160.00	0
	<b>Total:</b>	<b>99</b>	<b>1</b>	<b>1.01</b>	<b>1</b>	<b>589,579.00</b>	<b>4,580</b>
<b>Meigs</b>	D	3	0	0.00	0	4,502.00	0
	G	15	1	6.67	1	28,577.00	2,188
	K	3	0	0.00	0	3,562.00	0
	<b>Total:</b>	<b>21</b>	<b>1</b>	<b>4.76</b>	<b>1</b>	<b>36,641.00</b>	<b>2,188</b>
<b>Monroe</b>	AG	1	0	0.00	0	1,499.00	0
	D	18	0	0.00	0	55,830.00	0
	G	62	1	1.61	1	158,436.00	5,102
	K	5	0	0.00	0	4,461.00	0
	<b>Total:</b>	<b>86</b>	<b>1</b>	<b>1.16</b>	<b>1</b>	<b>220,226.00</b>	<b>5,102</b>
<b>Montgomery</b>	AG	2	0	0.00	0	6,600.00	0
	BDB	1	0	0.00	0	1,571.00	0

## Tennessee Department of Agriculture County Summary Short Report

PULL DATE ranges from 7/1/2006 TO 6/30/2007

Today: 08/12/2008

<i>County</i>	<i>Prod Code</i>	<i>Total Samples</i>	<i>Samples in Violation</i>	<i>%</i>	<i>Test Violation Total</i>	<i>Total Volume (Gals)</i>	<i>Total in Violation</i>
	D	45	0	0.00	0	208,776.00	0
	G	111	1	0.90	1	335,358.00	735
	JF	1	0	0.00	0	3,500.00	0
	K	6	0	0.00	0	3,812.00	0
	<b>Total:</b>	<b>166</b>	<b>1</b>	<b>0.60</b>	<b>1</b>	<b>559,617.00</b>	<b>735</b>
<b>Moore</b>	D	2	0	0.00	0	13,528.00	0
	G	4	0	0.00	0	19,811.00	0
	K	1	0	0.00	0	283.00	0
	<b>Total:</b>	<b>7</b>	<b>0</b>	<b>0.00</b>	<b>0</b>	<b>33,622.00</b>	<b>0</b>
<b>Morgan</b>	D	10	0	0.00	0	13,665.00	0
	G	23	1	4.35	1	35,187.00	562
	<b>Total:</b>	<b>33</b>	<b>1</b>	<b>3.03</b>	<b>1</b>	<b>48,852.00</b>	<b>562</b>
<b>Obion</b>	AG	2	0	0.00	0	7,008.00	0
	BD	2	1	50.00	1	3,049.00	0
	BDB	1	0	0.00	0	16,509.00	0
	D	10	1	10.00	1	31,324.00	1,201
	G	39	3	7.69	8	94,637.00	2,089
	JF	2	0	0.00	0	11,339.00	0
	K	5	0	0.00	0	2,308.00	0
	<b>Total:</b>	<b>61</b>	<b>5</b>	<b>8.20</b>	<b>10</b>	<b>166,174.00</b>	<b>3,290</b>

## Tennessee Department of Agriculture County Summary Short Report

PULL DATE ranges from 7/1/2006 TO 6/30/2007

Today: 08/12/2008

<i>County</i>	<i>Prod Code</i>	<i>Total Samples</i>	<i>Samples in Violation</i>	<i>%</i>	<i>Test Violation Total</i>	<i>Total Volume (Gals)</i>	<i>Total in Violation</i>
<b>Overton</b>							
	AG	1	0	0.00	0	2,248.00	0
	D	18	0	0.00	0	49,678.00	0
	G	39	1	2.56	1	90,004.00	421
	JF	1	0	0.00	0	4,159.00	0
	K	1	0	0.00	0	94.00	0
	<b>Total:</b>	<b>60</b>	<b>1</b>	<b>1.67</b>	<b>1</b>	<b>146,183.00</b>	<b>421</b>
<b>Perry</b>							
	D	4	0	0.00	0	158,512.00	0
	G	17	0	0.00	0	147,394.36	0
	K	1	0	0.00	0	1,790.00	0
	<b>Total:</b>	<b>22</b>	<b>0</b>	<b>0.00</b>	<b>0</b>	<b>307,696.36</b>	<b>0</b>
<b>Pickett</b>							
	D	5	0	0.00	0	12,257.00	0
	G	12	1	8.33	1	23,902.00	79
	<b>Total:</b>	<b>17</b>	<b>1</b>	<b>5.88</b>	<b>1</b>	<b>36,159.00</b>	<b>79</b>
<b>Polk</b>							
	D	12	0	0.00	0	41,375.00	0
	G	30	0	0.00	0	88,331.00	0
	K	1	0	0.00	0	2,910.00	0
	<b>Total:</b>	<b>43</b>	<b>0</b>	<b>0.00</b>	<b>0</b>	<b>132,616.00</b>	<b>0</b>
<b>Putnam</b>							
	AG	1	0	0.00	0	165.00	0
	BDB	3	0	0.00	0	27,214.00	0
	D	16	0	0.00	0	92,507.00	0

## Tennessee Department of Agriculture County Summary Short Report

PULL DATE ranges from 7/1/2006 TO 6/30/2007

Today: 08/12/2008

<i>County</i>	<i>Prod Code</i>	<i>Total Samples</i>	<i>Samples in Violation</i>	<i>%</i>	<i>Test Violation Total</i>	<i>Total Volume (Gals)</i>	<i>Total in Violation</i>
	G	76	1	1.32	1	199,411.00	1,721
	K	1	0	0.00	0	1,926.00	0
	<b>Total:</b>	<b>97</b>	<b>1</b>	<b>1.03</b>	<b>1</b>	<b>321,223.00</b>	<b>1,721</b>
<b>Rhea</b>	AG	1	0	0.00	0	3,285.00	0
	BDB	1	0	0.00	0	1,110.00	0
	D	16	0	0.00	0	45,973.00	0
	G	52	1	1.92	1	107,628.00	1,394
	JF	1	0	0.00	0	2,118.00	0
	K	3	0	0.00	0	2,844.00	0
	<b>Total:</b>	<b>74</b>	<b>1</b>	<b>1.35</b>	<b>1</b>	<b>162,958.00</b>	<b>1,394</b>
<b>Roane</b>	D	14	0	0.00	0	44,447.00	0
	G	50	2	4.00	5	131,279.00	1,637
	K	2	0	0.00	0	1,613.00	0
	<b>Total:</b>	<b>66</b>	<b>2</b>	<b>3.03</b>	<b>5</b>	<b>177,339.00</b>	<b>1,637</b>
<b>Robertson</b>	BD	1	1	100.00	1	1,318.00	1,318
	BDB	1	1	100.00	1	0.00	0
	D	37	3	8.11	3	117,792.00	2,025
	G	66	1	1.52	1	183,338.00	2,730
	JF	1	0	0.00	0	7,794.00	0
	K	14	0	0.00	0	7,691.00	0

## Tennessee Department of Agriculture County Summary Short Report

PULL DATE ranges from 7/1/2006 TO 6/30/2007

Today: 08/12/2008

<i>County</i>	<i>Prod Code</i>	<i>Total Samples</i>	<i>Samples in Violation</i>	<i>%</i>	<i>Test Violation Total</i>	<i>Total Volume (Gals)</i>	<i>Total in Violation</i>
	<b>Total:</b>	<b>120</b>	<b>6</b>	<b>5.00</b>	<b>6</b>	<b>317,933.00</b>	<b>6,073</b>
<b>Rutherford</b>	AG	3	0	0.00	0	12,474.45	0
	D	39	2	5.13	2	180,481.00	17,075
	G	133	0	0.00	0	614,235.00	0
	JF	3	0	0.00	0	35,470.40	0
	K	21	0	0.00	0	18,026.00	0
	<b>Total:</b>	<b>199</b>	<b>2</b>	<b>1.01</b>	<b>2</b>	<b>860,686.85</b>	<b>17,075</b>
<b>Scott</b>	AG	1	0	0.00	0	4,706.00	0
	D	20	2	10.00	2	46,198.00	702
	G	25	1	4.00	1	85,923.00	803
	JF	1	0	0.00	0	6,375.00	0
	K	1	0	0.00	0	1,182.00	0
	<b>Total:</b>	<b>48</b>	<b>3</b>	<b>6.25</b>	<b>3</b>	<b>144,384.00</b>	<b>1,505</b>
<b>Sequatchie</b>	D	7	0	0.00	0	23,244.00	0
	G	19	0	0.00	0	69,511.00	0
	<b>Total:</b>	<b>26</b>	<b>0</b>	<b>0.00</b>	<b>0</b>	<b>92,755.00</b>	<b>0</b>
<b>Sevier</b>	D	37	0	0.00	0	94,891.00	0
	G	109	0	0.00	0	411,586.00	0
	<b>Total:</b>	<b>146</b>	<b>0</b>	<b>0.00</b>	<b>0</b>	<b>506,477.00</b>	<b>0</b>
<b>Shelby</b>	AG	4	0	0.00	0	1,543,995.00	0



## Tennessee Department of Agriculture County Summary Short Report

PULL DATE ranges from 7/1/2006 TO 6/30/2007

Today: 08/12/2008

<i>County</i>	<i>Prod Code</i>	<i>Total Samples</i>	<i>Samples in Violation</i>	<i>%</i>	<i>Test Violation Total</i>	<i>Total Volume (Gals)</i>	<i>Total in Violation</i>
	BD	5	3	60.00	3	108,048.00	81,228
	BDB	1	0	0.00	0	40,227.00	0
	D	49	3	6.12	3	12,574,776.00	6,892
	G	430	8	1.86	10	16,861,471.00	9,072
	JF	3	0	0.00	0	324,242.00	0
	K	1	0	0.00	0	808.00	0
	<b>Total:</b>	<b>493</b>	<b>14</b>	<b>2.84</b>	<b>16</b>	<b>31,453,567.00</b>	<b>97,192</b>
<b>Smith</b>							
	D	8	0	0.00	0	22,749.00	0
	G	22	0	0.00	0	42,447.00	0
	K	4	1	25.00	1	1,754.00	147
	<b>Total:</b>	<b>34</b>	<b>1</b>	<b>2.94</b>	<b>1</b>	<b>66,950.00</b>	<b>147</b>
<b>Stewart</b>							
	D	8	0	0.00	0	8,217.00	0
	G	26	1	3.85	1	44,498.00	818
	K	3	0	0.00	0	2,416.00	0
	<b>Total:</b>	<b>37</b>	<b>1</b>	<b>2.70</b>	<b>1</b>	<b>55,131.00</b>	<b>818</b>
<b>Sullivan</b>							
	D	37	1	2.70	1	93,405.00	1,002
	G	109	2	1.83	2	324,745.00	7,892
	K	10	0	0.00	0	7,155.00	0
	<b>Total:</b>	<b>156</b>	<b>3</b>	<b>1.92</b>	<b>3</b>	<b>425,305.00</b>	<b>8,894</b>
<b>Sumner</b>							
	AG	2	0	0.00	0	62,499.00	0

## Tennessee Department of Agriculture County Summary Short Report

PULL DATE ranges from 7/1/2006 TO 6/30/2007

Today: 08/12/2008

<i>County</i>	<i>Prod Code</i>	<i>Total Samples</i>	<i>Samples in Violation</i>	<i>%</i>	<i>Test Violation Total</i>	<i>Total Volume (Gals)</i>	<i>Total in Violation</i>
	D	26	0	0.00	0	47,967.00	0
	G	105	3	2.86	3	344,953.00	4,741
	JF	1	0	0.00	0	1,634.00	0
	K	24	1	4.17	1	22,657.00	348
	<b>Total:</b>	<b>158</b>	<b>4</b>	<b>2.53</b>	<b>4</b>	<b>479,710.00</b>	<b>5,089</b>
<b>Tipton</b>	AG	2	0	0.00	0	11,800.00	0
	BD	3	2	66.67	2	9,950.00	7,000
	D	18	1	5.56	1	64,061.00	3,802
	G	47	1	2.13	1	130,010.00	3,013
	JF	2	0	0.00	0	5,200.00	0
	K	1	0	0.00	0	263.00	0
	<b>Total:</b>	<b>73</b>	<b>4</b>	<b>5.48</b>	<b>4</b>	<b>221,284.00</b>	<b>13,815</b>
<b>Trousdale</b>	D	3	0	0.00	0	1,898.00	0
	G	6	0	0.00	0	73,929.00	0
	<b>Total:</b>	<b>9</b>	<b>0</b>	<b>0.00</b>	<b>0</b>	<b>75,827.00</b>	<b>0</b>
<b>Unicoi</b>	D	9	0	0.00	0	15,961.00	0
	G	15	0	0.00	0	47,677.00	0
	<b>Total:</b>	<b>24</b>	<b>0</b>	<b>0.00</b>	<b>0</b>	<b>63,638.00</b>	<b>0</b>
<b>Union</b>	D	8	0	0.00	0	13,598.00	0
	G	17	1	5.88	1	41,881.00	1,600

## Tennessee Department of Agriculture County Summary Short Report

PULL DATE ranges from 7/1/2006 TO 6/30/2007

Today: 08/12/2008

<i>County</i>	<i>Prod Code</i>	<i>Total Samples</i>	<i>Samples in Violation</i>	<i>%</i>	<i>Test Violation Total</i>	<i>Total Volume (Gals)</i>	<i>Total in Violation</i>
	<b>Total:</b>	<b>25</b>	<b>1</b>	<b>4.00</b>	<b>1</b>	<b>55,479.00</b>	<b>1,600</b>
<b>Van Buren</b>	D	1	0	0.00	0	3,614.00	0
	G	7	0	0.00	0	14,936.00	0
	<b>Total:</b>	<b>8</b>	<b>0</b>	<b>0.00</b>	<b>0</b>	<b>18,550.00</b>	<b>0</b>
<b>Warren</b>	AG	1	0	0.00	0	6,281.00	0
	D	24	0	0.00	0	83,686.00	0
	G	56	0	0.00	0	297,977.00	0
	JF	1	0	0.00	0	3,772.00	0
	K	6	0	0.00	0	2,423.00	0
	LPG	1	0	0.00	0	15,000.00	0
	<b>Total:</b>	<b>89</b>	<b>0</b>	<b>0.00</b>	<b>0</b>	<b>409,139.00</b>	<b>0</b>
<b>Washington</b>	BDB	2	0	0.00	0	8,836.00	0
	D	28	0	0.00	0	100,136.00	0
	G	88	1	1.14	1	250,195.00	2,666
	K	11	0	0.00	0	11,981.00	0
	<b>Total:</b>	<b>129</b>	<b>1</b>	<b>0.78</b>	<b>1</b>	<b>371,148.00</b>	<b>2,666</b>
<b>Wayne</b>	D	10	1	10.00	1	19,632.00	286
	G	29	0	0.00	0	73,717.80	0
	<b>Total:</b>	<b>39</b>	<b>1</b>	<b>2.56</b>	<b>1</b>	<b>93,349.80</b>	<b>286</b>
<b>Weakley</b>	BD	2	2	100.00	9	2,366.00	2,366

## Tennessee Department of Agriculture County Summary Short Report

PULL DATE ranges from 7/1/2006 TO 6/30/2007

Today: 08/12/2008

<i>County</i>	<i>Prod Code</i>	<i>Total Samples</i>	<i>Samples in Violation</i>	<i>%</i>	<i>Test Violation Total</i>	<i>Total Volume (Gals)</i>	<i>Total in Violation</i>
	BDB	2	1	50.00	1	5,915.00	5,200
	D	12	1	8.33	1	25,289.50	2,241
	G	34	2	5.88	4	105,646.30	605
	K	4	0	0.00	0	4,344.00	0
	<b>Total:</b>	<b>54</b>	<b>6</b>	<b>11.11</b>	<b>15</b>	<b>143,560.80</b>	<b>10,412</b>
<b>White</b>							
	AG	1	0	0.00	0	2,483.00	0
	BDB	1	0	0.00	0	700.00	0
	D	5	0	0.00	0	14,230.00	0
	G	29	1	3.45	1	69,000.00	525
	JF	1	0	0.00	0	5,075.00	0
	K	2	0	0.00	0	1,444.00	0
	<b>Total:</b>	<b>39</b>	<b>1</b>	<b>2.56</b>	<b>1</b>	<b>92,932.00</b>	<b>525</b>
<b>Williamson</b>							
	D	30	0	0.00	0	185,714.00	0
	G	79	2	2.53	2	346,163.00	5,135
	K	9	0	0.00	0	9,994.00	0
	<b>Total:</b>	<b>118</b>	<b>2</b>	<b>1.69</b>	<b>2</b>	<b>541,871.00</b>	<b>5,135</b>
<b>Wilson</b>							
	AG	1	0	0.00	0	7,200.00	0
	BDB	1	0	0.00	0	4,104.00	0
	D	23	0	0.00	0	126,156.00	0
	G	81	3	3.70	3	288,557.00	4,630

## Tennessee Department of Agriculture County Summary Short Report

PULL DATE ranges from 7/1/2006 TO 6/30/2007

Today: 08/12/2008

<i>County</i>	<i>Prod Code</i>	<i>Total Samples</i>	<i>Samples in Violation</i>	<i>%</i>	<i>Test Violation Total</i>	<i>Total Volume (Gals)</i>	<i>Total in Violation</i>
	JF	1	0	0.00	0	8,323.00	0
	K	11	0	0.00	0	15,620.00	0
<b>Total:</b>		<b>118</b>	<b>3</b>	<b>2.54</b>	<b>3</b>	<b>449,960.00</b>	<b>4,630</b>

# **Kerosene and Motor Fuel Enforcement Summary**

**July 1, 2006 – June 30, 2007**

## **Civil Penalties:**

Total Penalties Issued:	98
Amount Issued:	\$73,704
Total Collections:	\$73,725

## **Product Stop Sales:**

Total Stop-Sales:	213
Total Gallons Stop-Sold:	852,795

## **Administrative Hearings**

There were no administrative hearings held in FY '07; all cases were settled without a formal legal hearing.