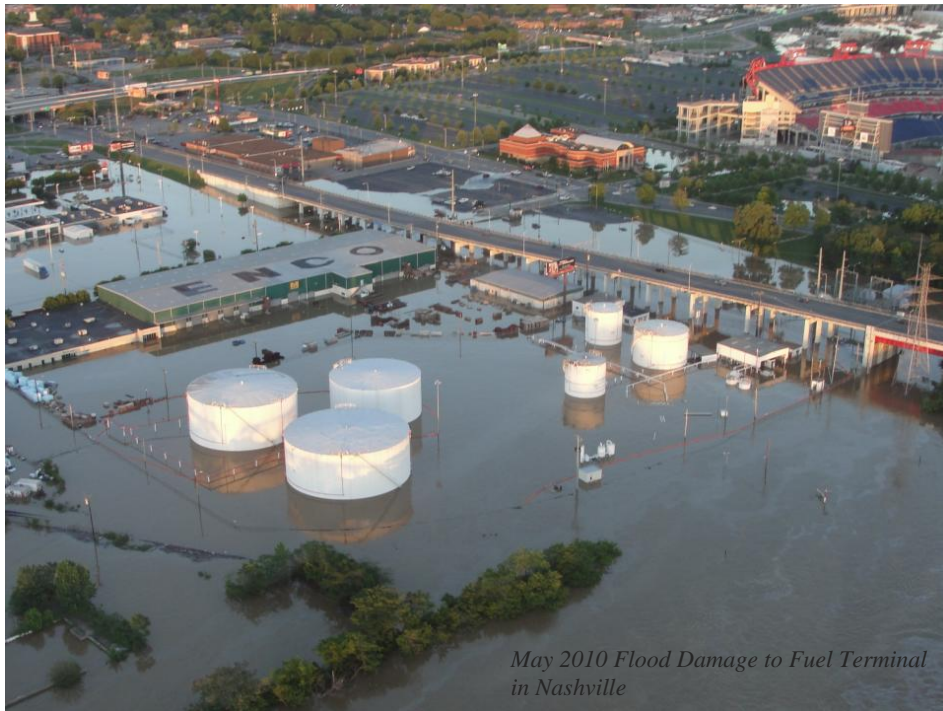


FY 2010

***ANNUAL REPORT ON THE
QUALITY OF***

**KEROSENE AND MOTOR
FUEL IN TENNESSEE**



**IN FULFILLMENT OF THE REQUIREMENTS OF
TCA 47-18-1304**

SUBMITTED BY THE

TENNESSEE DEPARTMENT OF AGRICULTURE



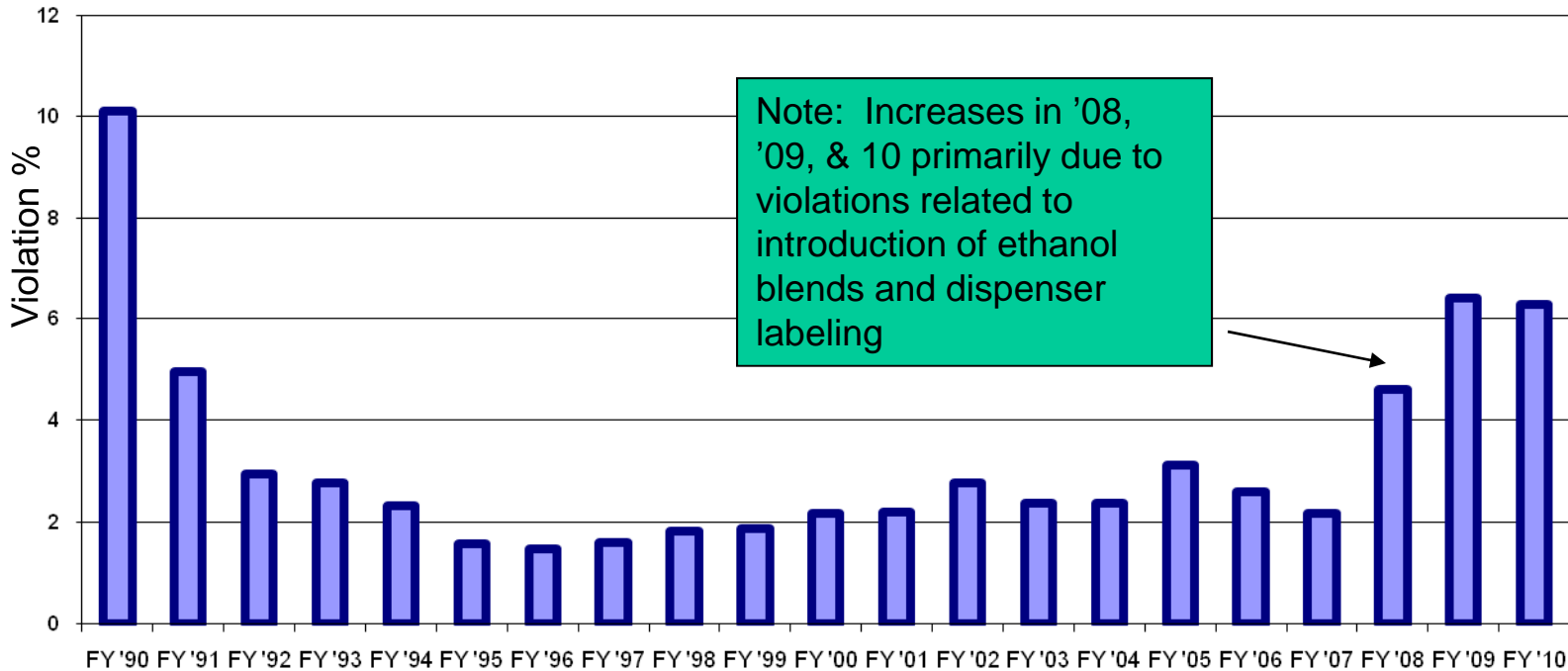
ANNUAL REPORT ON THE QUALITY OF KEROSENE AND MOTOR FUEL IN TENNESSEE

TABLE OF CONTENTS

- I. Effectiveness of Program**
 - a. Violation % Graphs**
 - b. State Wide Violation Graph**
 - c. Gasoline, Diesel, Kerosene Trend Graph**
- II. Consumer Complaints Summary**
- III. Inspection Data**
 - a. State Wide Summary**
 - b. TN Region Summary**
 - c. Product Summary**
 - d. Business Type Summary**
 - e. Inspection Type Summary**
 - f. County Distribution Data**
- IV. Enforcement Summary**

TENNESSEE DEPARTMENT OF AGRICULTURE

ANNUAL SAMPLE VIOLATION SUMMARY All Regulated Products Tested

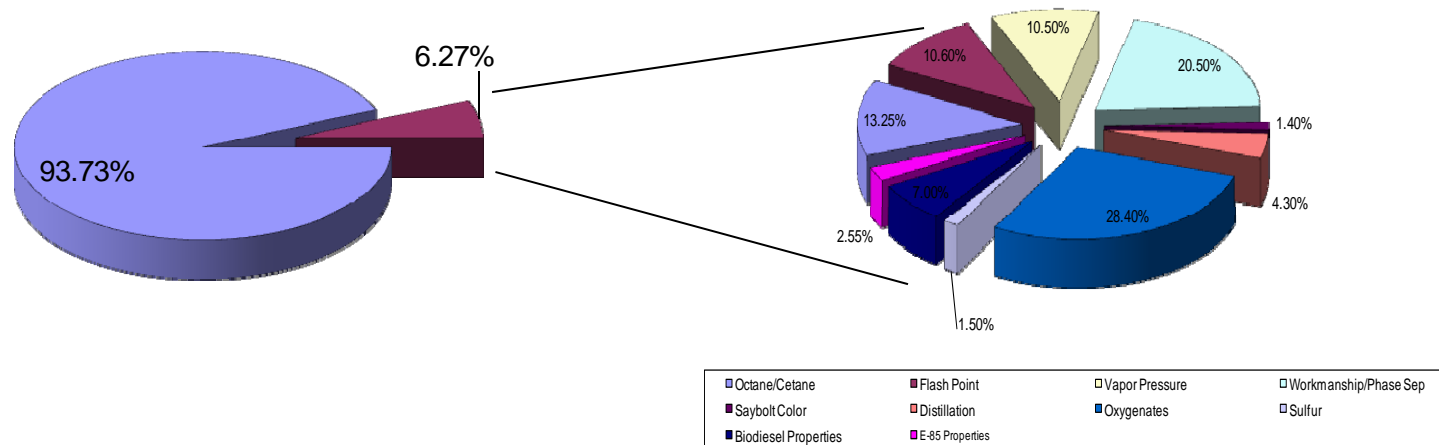


EFFECTIVENESS OF PROGRAM
REGULATORY SERVICES

State Wide Violation Summary

Violation Breakdown

July 1, 2009 - June 30, 2010

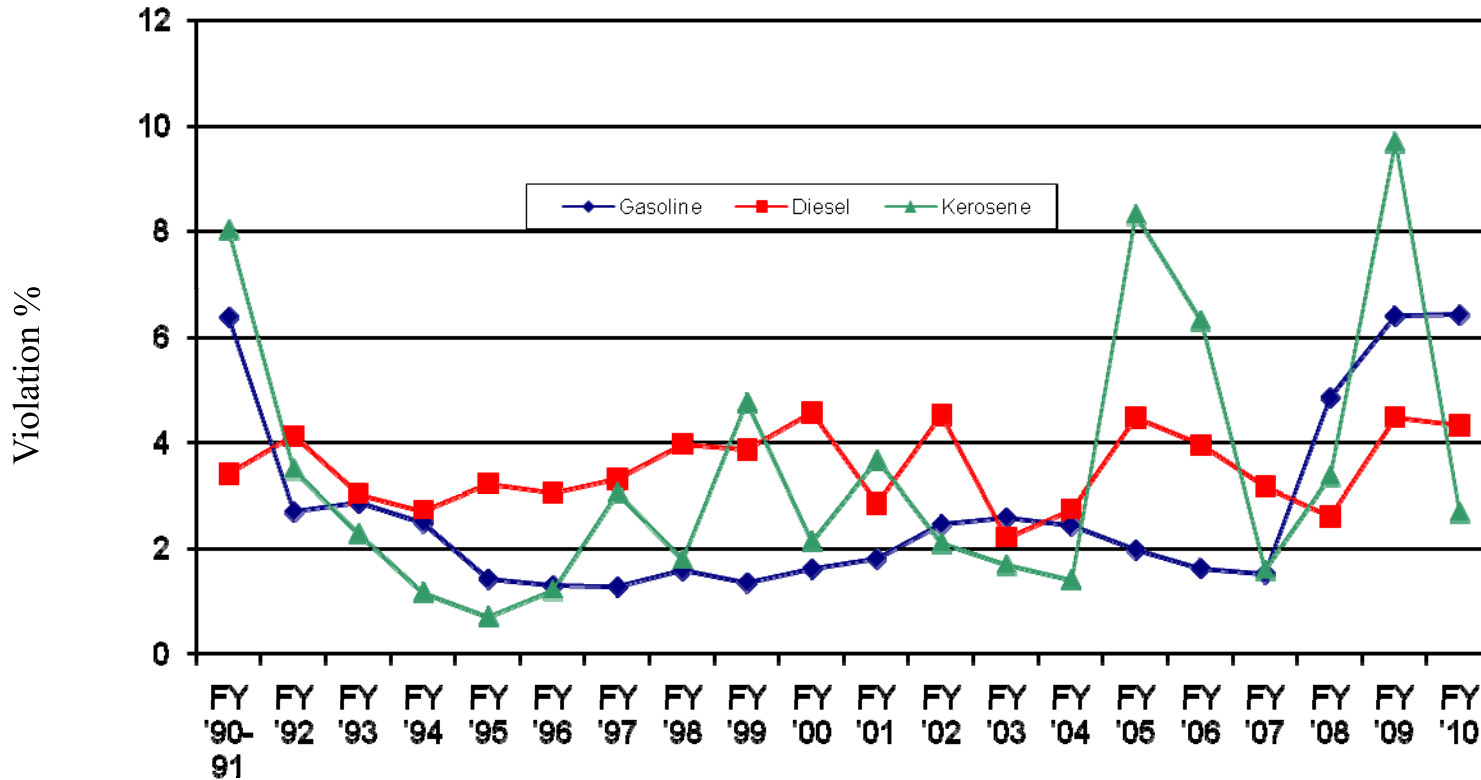


Tennessee Department of Agriculture
Regulatory Services

TENNESSEE DEPARTMENT OF AGRICULTURE

ANNUAL SAMPLE VIOLATION SUMMARY

Gasoline, Diesel, & Kerosene Breakdown



EFFECTIVENESS OF PROGRAM
REGULATORY SERVICES



TENNESSEE DEPARTMENT OF AGRICULTURE

Terry Oliver
COMMISSIONER

REGULATORY SERVICES

**MOTOR FUELS QUALITY PROGRAM
SUMMARY OF CONSUMER COMPLAINTS RECEIVED FROM
07/01/2009 – 06/30/2010**

TOTAL NUMBER OF COMPLAINTS EVALUATED IN TIME FRAME: 112

Category Breakdown of Complaints :

Octane	4
Water	46
Volatility	1
Alcohols	14
Contamination	39
Misc.	8

The Department maintains a 24 hour toll free line (1-800-OCTANE1) for Consumer Complaints. It is promoted through media publicity and dispenser decals applied by inspectors performing Weights and Measures activities.

REPORTING CODE KEY

Product Codes

AG - Aviation Gasoline
D - Diesel
G - Gasoline
JF - Jet Fuel
K - Kerosene
RF - Racing Fuel
PD - Premium Diesel
BD - Biodiesel Blending Stock
BDB - Biodiesel Blend
LPG - Liquefied Petroleum Gas
E85 - E-85 Fuel Ethanol
DFE - Denatured Fuel Ethanol

Grade Codes

MG - Mid Grade
MGE - Mid Grade w/ Ethanol
PU - Premium Unleaded
PUE - Premium Unleaded w/ Ethanol
RL - Regular Leaded
RU - Regular Unleaded
RUE - Regular Unleaded w/ Ethanol
1D - No. 1-D Diesel
2D - No. 2-D Diesel
2DLS - No. 2-D Low Sulfur
2D UL - No. 2-D ULSD
1K - No. 1 Kerosene
2K - No. 2 Kerosene
JA - Jet A Turbine Fuel
80 - 80 Octane
100 - 100 Octane

Request

100LL - 100 Low Lead
BDBS - S500 Biodiesel Blending Stock
BDBS1(5) - S15 Biodiesel Blending Stock
B10LS - B10 Biodiesel Low Sulfur
B20U - B20 Biodiesel ULSD
B20LS - B20 Biodiesel Low Sulfur
B5 LS - B5 Biodiesel Low Sulfur
B5 UL - B5 Biodiesel ULSD
B5-20 - B5-20 Low Sulfur
E-85 - E-85 Fuel Ethanol Grade
SD - Special Duty Propane
E100 - Denatured Fuel Ethanol Grade

District Codes

W - West TN
M - Middle TN
E - East TN

Business Type

R - Retailer
T - Terminal
A - Airport
D - Distributor
M - Marina
O - Other
I - Individual

Inspection Type

R - Routine
C - Complaint
F - Follow-up
O - Office

Tennessee Department of Agriculture State Wide Violation Analysis Report

PULL DATE ranges from 7/1/2009 TO 6/30/2010

8/11/2010

<i>Prod Code</i>	<i>Total Samples</i>	<i>Samples in Violation</i>	<i>%</i>	<i>Test Violation Total</i>	<i>Total Volume (Gals)</i>	<i>Total in Violation</i>
AG	9	0	0.00	0	797,710.00	0
BD	21	10	47.62	20	165,185.20	37,414
BDB	60	30	50.00	36	567,541.00	85,226
D	1,913	83	4.34	86	59,874,884.81	301,233
DFE	54	0	0.00	0	20,890,693.51	0
E85	57	17	29.82	27	153,825.00	46,916
G	5,614	361	6.43	551	222,982,763.18	1,035,353
JF	9	0	0.00	0	3,069,628.00	0
K	448	12	2.68	13	744,830.00	12,796
Total	8,185	513	6.27	733	309,247,060.70	1,518,938

Tennessee Department of Agriculture State Wide Violation Analysis Report

PULL DATE ranges from 7/1/2009 TO 6/30/2010

8/11/2010

<i>Prod Code</i>	<i>Total Samples</i>	<i>Samples in Violation</i>	%	<i>Test Violation Total</i>	<i>Total Volume (Gals)</i>	<i>Total in Violation</i>
----------------------	--------------------------	-------------------------------------	---	-------------------------------------	------------------------------------	-----------------------------------

Test Violation Detail Listing

96	Octane	13.10%
77	Flash Point	10.50%
208	Oxygenates	28.38%
77	Vapor Pressure	10.50%
78	Workmanship (Appearance)	10.64%
72	Phase Separation	9.82%
10	Saybolt Color	1.36%
3	Sediment & Water	0.41%
11	Sulfur	1.50%
31	Distillation	4.23%
1	Cetane Index	0.14%
4	Acid Number	0.55%
1	Glycerine	0.14%
1	Sulfated Ash	0.14%
1	Carbon Residue	0.14%
2	Phosphorous	0.27%
16	Biodiesel Blend	2.18%
21	Oxidation	2.86%
4	E-85 EtOH & Higher Alcohols	0.55%
9	E-85 Hydrocarbons & Aliphatic Ethers	1.23%
1	E85 Chlorides	0.14%
1	E85 Copper	0.14%
3	Volatility	0.41%
5	Filtration	0.68%

Tennessee Department of Agriculture District Violation Analysis Report

ALL DISTRICT VALUES SELECTED.

PULL DATE ranges from 7/1/2009 TO 6/30/2010

8/11/2010

<i>Dist</i>	<i>Prod Code</i>	<i>Grade</i>	<i>Total Samples</i>	<i>Samples in Violation</i>	<i>%</i>	<i>Test Violation Total</i>	<i>Total Volume (Gals)</i>	<i>Total in Violation</i>
EAST								
BD	BD	BDBS	2	1	50.00	2	1,143	800
BD	BD	BDBS15	5	2	40.00	2	19,626	8,226
Subtotal:			7	3	42.86	4	20,769	9,026
BDB	BDB	B10LS	1	0	0.00	0	815	0
BDB	BDB	B20 ULSD	12	7	58.33	9	24,539	17,547
BDB	BDB	B20LS	2	1	50.00	1	4,543	2,693
BDB	BDB	B5-20 ULSD	8	3	37.50	3	18,602	3,498
Subtotal:			23	11	47.83	13	48,499	23,738
D	D	2D	9	2	22.22	3	8,211	1,938
D	D	2D LS	89	3	3.37	3	11,964,665	7,952
D	D	2D ULSD 1:	730	20	2.74	20	14,697,788	40,375
Subtotal:			828	25	3.02	26	26,670,664	50,265
DFE	DFE	E100	18	0	0.00	0	6,037,502	0
Subtotal:			18	0	0.00	0	6,037,502	0
E85	E85	E-85	21	8	38.10	13	58,768	15,140
Subtotal:			21	8	38.10	13	58,768	15,140
G	G	MG	630	56	8.89	81	1,696,247	159,199
G	G	PU	806	75	9.31	113	13,014,281	135,489
G	G	RU	1,093	41	3.75	73	47,745,387	182,108
G	G	RU BS	7	0	0.00	0	12,273,795	0
Subtotal:			2,536	172	6.78	267	74,729,710	476,796
JF	JF	JA	2	0	0.00	0	843,386	0
Subtotal:			2	0	0.00	0	843,386	0
K	K	1K	152	5	3.29	5	431,573	9,337

Tennessee Department of Agriculture District Violation Analysis Report

ALL DISTRICT VALUES SELECTED.

PULL DATE ranges from 7/1/2009 TO 6/30/2010

8/11/2010

<i>Dist</i>	<i>Prod Code</i>	<i>Grade</i>	<i>Total Samples</i>	<i>Samples in Violation</i>	<i>%</i>	<i>Test Violation Total</i>	<i>Total Volume (Gals)</i>	<i>Total in Violation</i>
Subtotal:			152	5	3.29	5	431,573	9,337
Total:			3,587	224	6.24	328	108,840,871	584,302

Total Violation Detail Listing

48	Octane	14.63%
18	Flash Point	5.49%
94	Oxygenates	28.66%
47	Vapor Pressure	14.33%
37	Workmanship (Appearance)	11.28%
35	Phase Separation	10.67%
4	Saybolt Color	1.22%
2	Sediment & Water	0.61%
8	Sulfur	2.44%
13	Distillation	3.96%
2	Acid Number	0.61%
1	Carbon Residue	0.30%
5	Biodiesel Blend	1.52%
7	Oxidation	2.13%
2	E-85 EtOH & Higher Alcohols	0.61%
3	E-85 Hydrocarbons & Aliphatic Ethers	0.91%
1	E85 Copper	0.30%
1	Volatility	0.30%

Tennessee Department of Agriculture District Violation Analysis Report

ALL DISTRICT VALUES SELECTED.

PULL DATE ranges from 7/1/2009 TO 6/30/2010

8/11/2010

<i>Dist</i>	<i>Prod Code</i>	<i>Grade</i>	<i>Total Samples</i>	<i>Samples in Violation</i>	<i>%</i>	<i>Test Violation Total</i>	<i>Total Volume (Gals)</i>	<i>Total in Violation</i>
MIDDLE								
AG	100LL		6	0	0.00	0	19,666	0
	Subtotal:		6	0	0.00	0	19,666	0
BD	BDBS		2	2	100.00	6	3,713	3,713
BD	BDBS15		12	5	41.67	10	140,703	24,675
	Subtotal:		14	7	50.00	16	144,416	28,388
BDB	B20 ULSD		28	16	57.14	20	39,497	17,789
BDB	B20LS		2	1	50.00	1	43,213	41,368
BDB	B5-20		1	0	0.00	0	4,026	0
BDB	B5-20 ULSD		4	2	50.00	2	6,587	2,331
	Subtotal:		35	19	54.29	23	93,323	61,488
D	2D		10	0	0.00	0	33,341	0
D	2D LS		137	10	7.30	10	2,419,570	23,566
D	2D ULSD 15		581	17	2.93	17	19,276,731	21,833
	Subtotal:		728	27	3.71	27	21,729,642	45,399
DFE	E100		23	0	0.00	0	7,097,995	0
	Subtotal:		23	0	0.00	0	7,097,995	0
E85	E-85		33	7	21.21	11	75,252	17,729
	Subtotal:		33	7	21.21	11	75,252	17,729
G	MG		469	45	9.59	69	1,330,463	105,623
G	PU		591	49	8.29	65	11,868,780	70,750
G	RU		808	48	5.94	74	65,636,848	253,182
G	RU BS		19	0	0.00	0	22,284,689	0
	Subtotal:		1,887	142	7.53	208	101,120,780	429,555
JF	JA		5	0	0.00	0	41,823	0

Tennessee Department of Agriculture District Violation Analysis Report

ALL DISTRICT VALUES SELECTED.

PULL DATE ranges from 7/1/2009 TO 6/30/2010

8/11/2010

<i>Dist</i>	<i>Prod Code</i>	<i>Grade</i>	<i>Total Samples</i>	<i>Samples in Violation</i>	<i>%</i>	<i>Test Violation Total</i>	<i>Total Volume (Gals)</i>	<i>Total in Violation</i>
		Subtotal:	5	0	0.00	0	41,823	0
K		1K	237	7	2.95	8	245,030	3,459
		Subtotal:	237	7	2.95	8	245,030	3,459
		Total:	2,968	209	7.04	293	130,567,927	586,018

Total Violation Detail Listing

32	Octane	10.92%
28	Flash Point	9.56%
81	Oxygenates	27.65%
25	Vapor Pressure	8.53%
32	Workmanship (Appearance)	10.92%
29	Phase Separation	9.90%
6	Saybolt Color	2.05%
1	Sediment & Water	0.34%
2	Sulfur	0.68%
13	Distillation	4.44%
2	Acid Number	0.68%
1	Glycerine	0.34%
1	Sulfated Ash	0.34%
2	Phosphorous	0.68%
11	Biodiesel Blend	3.75%
14	Oxidation	4.78%
2	E-85 EtOH & Higher Alcohols	0.68%
4	E-85 Hydrocarbons & Aliphatic Ethers	1.37%
1	E85 Chlorides	0.34%
1	Volatility	0.34%
5	Filtration	1.71%

Tennessee Department of Agriculture District Violation Analysis Report

ALL DISTRICT VALUES SELECTED.

PULL DATE ranges from 7/1/2009 TO 6/30/2010

8/11/2010

<i>Dist</i>	<i>Prod Code</i>	<i>Grade</i>	<i>Total Samples</i>	<i>Samples in Violation</i>	<i>%</i>	<i>Test Violation Total</i>	<i>Total Volume (Gals)</i>	<i>Total in Violation</i>
WEST								
AG	100		1	0	0.00	0	437,845	0
AG	100LL		2	0	0.00	0	340,199	0
Subtotal:			3	0	0.00	0	778,044	0
BDB	B20 ULSD		1	0	0.00	0	2,719	0
BDB	B5 LS		1	0	0.00	0	423,000	0
Subtotal:			2	0	0.00	0	425,719	0
D	2D		5	0	0.00	0	15,767	0
D	2D LS		32	3	9.38	3	778,994	17,505
D	2D ULSD 1!		320	28	8.75	30	10,679,818	188,064
Subtotal:			357	31	8.68	33	11,474,579	205,569
DFE	E100		13	0	0.00	0	7,755,197	0
Subtotal:			13	0	0.00	0	7,755,197	0
E85	E-85		3	2	66.67	3	19,805	14,047
Subtotal:			3	2	66.67	3	19,805	14,047
G	MG		306	7	2.29	9	810,286	12,280
G	PU		373	23	6.17	36	6,096,332	41,300
G	PU BS		6	0	0.00	0	4,033,520	0
G	RU		499	17	3.41	31	19,826,936	75,422
G	RU BS		7	0	0.00	0	16,365,199	0
Subtotal:			1,191	47	3.95	76	47,132,273	129,002
JF	JA		2	0	0.00	0	2,184,419	0
Subtotal:			2	0	0.00	0	2,184,419	0
K	1K		59	0	0.00	0	68,227	0
Subtotal:			59	0	0.00	0	68,227	0

Tennessee Department of Agriculture District Violation Analysis Report

ALL DISTRICT VALUES SELECTED.

PULL DATE ranges from 7/1/2009 TO 6/30/2010

8/11/2010

<i>Dist</i>	<i>Prod Code</i>	<i>Grade</i>	<i>Total Samples</i>	<i>Samples in Violation</i>	<i>%</i>	<i>Test Violation Total</i>	<i>Total Volume (Gals)</i>	<i>Total in Violation</i>
Total:			1,630	80	4.91	112	69,838,263	348,618

Total Violation Detail Listing

16	Octane	14.29%
31	Flash Point	27.68%
33	Oxygenates	29.46%
5	Vapor Pressure	4.46%
9	Workmanship (Appearance)	8.04%
8	Phase Separation	7.14%
1	Sulfur	0.89%
5	Distillation	4.46%
1	Cetane Index	0.89%
2	E-85 Hydrocarbons & Aliphatic Ethers	1.79%
1	Volatility	0.89%

Tennessee Department of Agriculture Product Violation Analysis Report

PULL DATE ranges from 7/1/2009 TO 6/30/2010

8/11/2010

<i>Prod</i>	<i>Grade</i>	<i>Total Samples</i>	<i>Samples in Violation</i>	<i>%</i>	<i>Test Violation Total</i>	<i>Total Volume (Gals)</i>	<i>Total in Violation</i>
Aviation Gasoline							
	100	1	0	0.00	0	437,845.00	0
	100LL	8	0	0.00	0	359,865.00	0
Subtotal:		9	0	0.00	0	797,710.00	0

Tennessee Department of Agriculture Product Violation Analysis Report

PULL DATE ranges from 7/1/2009 TO 6/30/2010

8/11/2010

<i>Prod</i>	<i>Grade</i>	<i>Total Samples</i>	<i>Samples in Violation</i>	<i>%</i>	<i>Test Violation Total</i>	<i>Total Volume (Gals)</i>	<i>Total in Violation</i>
Biodiesel							
	BDDBS	4	3	75.00	8	4,856.20	4,513
	BDDBS1	17	7	41.18	12	160,329.00	32,901
Subtotal:		21	10	47.62	20	165,185.20	37,414

Test Violation Detail Listing

2	Sediment & Water	10.00%
2	Sulfur	10.00%
3	Acid Number	15.00%
1	Glycerine	5.00%
1	Sulfated Ash	5.00%
1	Carbon Residue	5.00%
2	Phosphorous	10.00%
3	Oxidation	15.00%
5	Filtration	25.00%

Tennessee Department of Agriculture Product Violation Analysis Report

PULL DATE ranges from 7/1/2009 TO 6/30/2010

8/11/2010

<i>Prod</i>	<i>Grade</i>	<i>Total Samples</i>	<i>Samples in Violation</i>	<i>%</i>	<i>Test Violation Total</i>	<i>Total Volume (Gals)</i>	<i>Total in Violation</i>
Biodiesel Blend							
	B10LS	1	0	0.00	0	815.00	0
	B20 U	41	23	56.10	29	66,755.00	35,336
	B20LS	4	2	50.00	2	47,756.00	44,061
	B5 LS	1	0	0.00	0	423,000.00	0
	B5-20	13	5	38.46	5	29,215.00	5,829
Subtotal:		60	30	50.00	36	567,541.00	85,226

Test Violation Detail Listing

1	Flash Point	2.78%
1	Acid Number	2.78%
16	Biodiesel Blend	44.44%
18	Oxidation	50.00%

Tennessee Department of Agriculture Product Violation Analysis Report

PULL DATE ranges from 7/1/2009 TO 6/30/2010

8/11/2010

<i>Prod</i>	<i>Grade</i>	<i>Total Samples</i>	<i>Samples in Violation</i>	<i>%</i>	<i>Test Violation Total</i>	<i>Total Volume (Gals)</i>	<i>Total in Violation</i>
Diesel	2D	24	2	8.33	3	57,319.00	1,938
	2D LS	258	16	6.20	16	15,163,228.71	49,023
	2D UL	1,631	65	3.99	67	44,654,337.10	250,272
Subtotal:		1,913	83	4.34	86	59,874,884.81	301,233

Test Violation Detail Listing

75	Flash Point	87.21%
1	Sediment & Water	1.16%
9	Sulfur	10.47%
1	Cetane Index	1.16%

Tennessee Department of Agriculture Product Violation Analysis Report

PULL DATE ranges from 7/1/2009 TO 6/30/2010

8/11/2010

<i>Prod</i>	<i>Grade</i>	<i>Total Samples</i>	<i>Samples in Violation</i>	<i>%</i>	<i>Test Violation Total</i>	<i>Total Volume (Gals)</i>	<i>Total in Violation</i>
Denat. Fuel EtOH	E100	54	0	0.00	0	20,890,693.51	0
Subtotal:		54	0	0.00	0	20,890,693.51	0

Tennessee Department of Agriculture Product Violation Analysis Report

PULL DATE ranges from 7/1/2009 TO 6/30/2010

8/11/2010

<i>Prod</i>	<i>Grade</i>	<i>Total Samples</i>	<i>Samples in Violation</i>	<i>%</i>	<i>Test Violation Total</i>	<i>Total Volume (Gals)</i>	<i>Total in Violation</i>
E-85 Fuel Ethanol	E-85	57	17	29.82	27	153,825.00	46,916
Subtotal:		57	17	29.82	27	153,825.00	46,916

Test Violation Detail Listing

12	Vapor Pressure	44.44%
4	E-85 EtOH & Higher Alcohols	14.81%
9	E-85 Hydrocarbons & Aliphatic Ethers	33.33%
1	E85 Chlorides	3.70%
1	E85 Copper	3.70%

Tennessee Department of Agriculture Product Violation Analysis Report

PULL DATE ranges from 7/1/2009 TO 6/30/2010

8/11/2010

<i>Prod</i>	<i>Grade</i>	<i>Total Samples</i>	<i>Samples in Violation</i>	<i>%</i>	<i>Test Violation Total</i>	<i>Total Volume (Gals)</i>	<i>Total in Violation</i>
Gasoline							
	MG	1,405	108	7.69	159	3,836,995.58	277,102
	PU	1,770	147	8.31	214	30,979,393.20	247,539
	PU BS	6	0	0.00	0	4,033,520.00	0
	RU	2,400	106	4.42	178	133,209,171.40	510,712
	RU BS	33	0	0.00	0	50,923,683.00	0
Subtotal:		5,614	361	6.43	551	222,982,763.18	1,035,353

Test Violation Detail Listing

96	Octane	17.42%
208	Oxygenates	37.75%
65	Vapor Pressure	11.80%
78	Workmanship (Appearance)	14.16%
72	Phase Separation	13.07%
29	Distillation	5.26%
3	Volatility	0.54%

Tennessee Department of Agriculture Product Violation Analysis Report

PULL DATE ranges from 7/1/2009 TO 6/30/2010

8/11/2010

<i>Prod</i>	<i>Grade</i>	<i>Total Samples</i>	<i>Samples in Violation</i>	<i>%</i>	<i>Test Violation Total</i>	<i>Total Volume (Gals)</i>	<i>Total in Violation</i>
Jet Fuel	JA	9	0	0.00	0	3,069,628.00	0
Subtotal:		9	0	0.00	0	3,069,628.00	0

Tennessee Department of Agriculture Product Violation Analysis Report

PULL DATE ranges from 7/1/2009 TO 6/30/2010

8/11/2010

<i>Prod</i>	<i>Grade</i>	<i>Total Samples</i>	<i>Samples in Violation</i>	<i>%</i>	<i>Test Violation Total</i>	<i>Total Volume (Gals)</i>	<i>Total in Violation</i>
Kerosene	1K	448	12	2.68	13	744,830.00	12,796
Subtotal:		448	12	2.68	13	744,830.00	12,796

Test Violation Detail Listing

1	Flash Point	7.69%
10	Saybolt Color	76.92%
2	Distillation	15.38%

Tennessee Department of Agriculture Business Type Violation Analysis Report

Data Sorted with All Parameters

PULL DATE ranges from 7/1/2009 TO 6/30/2010

Today: 01/06/2011

<i>Bus Type</i>	<i>Prod Code</i>	<i>Grade</i>	<i>Total Samples</i>	<i>Samples in Violation</i>	<i>%</i>	<i>Test Violation Total</i>	<i>Total Volume (Gals)</i>	<i>Total in Violation</i>
Airport	AG	100LL	6	0	0.00	0	19,666	0
		Subtotal:	6	0	0.00	0	19,666	0
	JF	JA	6	0	0.00	0	45,023	0
		Subtotal:	6	0	0.00	0	45,023	0
		Total:	12	0	0.00	0	64,689	0

Tennessee Department of Agriculture Business Type Violation Analysis Report

Data Sorted with All Parameters

PULL DATE ranges from 7/1/2009 TO 6/30/2010

Today: 01/06/2011

<i>Bus Type</i>	<i>Prod Code</i>	<i>Grade</i>	<i>Total Samples</i>	<i>Samples in Violation</i>	<i>%</i>	<i>Test Violation Total</i>	<i>Total Volume (Gals)</i>	<i>Total in Violation</i>
Distributor								
	BD	BDBS	2	1	50.00	2	1,143	800
	BD	BDBS15	2	2	100.00	2	8,226	8,226
Subtotal:			4	3	75.00	4	9,369	9,026
	D	2D LS	16	1	6.25	1	91,221	8,433
	D	2D ULSD 1!	23	1	4.35	2	156,249	5,800
Subtotal:			39	2	5.13	3	247,470	14,233
	E85	E-85	2	1	50.00	2	5,638	3,399
Subtotal:			2	1	50.00	2	5,638	3,399
	G	MG	2	0	0.00	0	12,172	0
	G	PU	10	1	10.00	1	33,406	3,392
	G	RU	17	0	0.00	0	91,716	0
Subtotal:			29	1	3.45	1	137,294	3,392
	K	1K	4	0	0.00	0	6,665	0
Subtotal:			4	0	0.00	0	6,665	0
Total:			78	7	8.97	10	406,436	30,050

Test Violation Detail Listing

2	Flash Point	20.00%
1	Oxygenates	10.00%
1	Sediment & Water	10.00%
1	Sulfur	10.00%
1	Acid Number	10.00%
1	Carbon Residue	10.00%
1	Oxidation	10.00%
1	E-85 Hydrocarbons & Aliphatic Ethers	10.00%
1	E85 Chlorides	10.00%

Tennessee Department of Agriculture Business Type Violation Analysis Report

Data Sorted with All Parameters

PULL DATE ranges from 7/1/2009 TO 6/30/2010

Today: 01/06/2011

<i>Bus Type</i>	<i>Prod Code</i>	<i>Grade</i>	<i>Total Samples</i>	<i>Samples in Violation</i>	<i>%</i>	<i>Test Violation Total</i>	<i>Total Volume (Gals)</i>	<i>Total in Violation</i>
Marina								
	D	2D	5	0	0.00	0	5,245	0
	D	2D LS	3	0	0.00	0	5,644	0
	D	2D ULSD 1!	1	0	0.00	0	3,329	0
		Subtotal:	9	0	0.00	0	14,218	0
	G	MG	46	5	10.87	5	115,063	7,939
	G	PU	20	3	15.00	4	45,305	6,241
	G	RU	51	2	3.92	3	85,436	248
		Subtotal:	117	10	8.55	12	245,804	14,428
		Total:	126	10	7.94	12	260,022	14,428

Test Violation Detail Listing

6	Octane	50.00%
4	Oxygenates	33.33%
1	Workmanship (Appearance)	8.33%
1	Distillation	8.33%

Tennessee Department of Agriculture Business Type Violation Analysis Report

Data Sorted with All Parameters

PULL DATE ranges from 7/1/2009 TO 6/30/2010

Today: 01/06/2011

<i>Bus Type</i>	<i>Prod Code</i>	<i>Grade</i>	<i>Total Samples</i>	<i>Samples in Violation</i>	<i>%</i>	<i>Test Violation Total</i>	<i>Total Volume (Gals)</i>	<i>Total in Violation</i>
Other	BDB	B20 ULSD	4	2	50.00	3	9,531	6,812
Subtotal:			4	2	50.00	3	9,531	6,812
	E85	E-85	5	2	40.00	4	38,462	8,144
Subtotal:			5	2	40.00	4	38,462	8,144
	G	PU	2	0	0.00	0	6,211	0
Subtotal:			2	0	0.00	0	6,211	0
Total:			11	4	36.36	7	54,204	14,956

Test Violation Detail Listing

2	Biodiesel Blend	28.57%
1	Oxidation	14.29%
1	E-85 EtOH & Higher Alcohols	14.29%
2	E-85 Hydrocarbons & Aliphatic Ethers	28.57%
1	E85 Copper	14.29%

Tennessee Department of Agriculture Business Type Violation Analysis Report

Data Sorted with All Parameters

PULL DATE ranges from 7/1/2009 TO 6/30/2010

Today: 01/06/2011

<i>Bus Type</i>	<i>Prod Code</i>	<i>Grade</i>	<i>Total Samples</i>	<i>Samples in Violation</i>	<i>%</i>	<i>Test Violation Total</i>	<i>Total Volume (Gals)</i>	<i>Total in Violation</i>
Retailer								
	BD	BDBS15	3	0	0.00	0	12,334	0
		Subtotal:	3	0	0.00	0	12,334	0
	BDB	B10LS	1	0	0.00	0	815	0
	BDB	B20 ULSD	36	20	55.56	25	53,327	24,627
	BDB	B20LS	4	2	50.00	2	47,756	44,061
	BDB	B5-20	1	0	0.00	0	4,026	0
	BDB	B5-20 ULSD	12	5	41.67	5	25,189	5,829
		Subtotal:	54	27	50.00	32	131,113	74,517
	D	2D	19	2	10.53	3	52,074	1,938
	D	2D LS	220	15	6.82	15	805,921	40,590
	D	2D ULSD 1!	1,533	63	4.11	64	6,939,617	135,524
		Subtotal:	1,772	80	4.51	82	7,797,612	178,052
	DFE	E100	2	0	0.00	0	487,337	0
		Subtotal:	2	0	0.00	0	487,337	0
	E85	E-85	50	14	28.00	21	109,725	35,373
		Subtotal:	50	14	28.00	21	109,725	35,373
	G	MG	1,357	103	7.59	154	3,709,761	269,163
	G	PU	1,669	143	8.57	209	4,304,569	237,906
	G	RU	2,238	104	4.65	175	13,441,202	510,464
		Subtotal:	5,264	350	6.65	538	21,455,532	1,017,533
	K	1K	442	12	2.71	13	432,363	12,796
		Subtotal:	442	12	2.71	13	432,363	12,796
		Total:	7,587	483	6.37	686	30,426,016	1,318,271

Tennessee Department of Agriculture Business Type Violation Analysis Report

Data Sorted with All Parameters

PULL DATE ranges from 7/1/2009 TO 6/30/2010

Today: 01/06/2011

<i>Bus Type</i>	<i>Prod Code</i>	<i>Grade</i>	<i>Total Samples</i>	<i>Samples in Violation</i>	<i>%</i>	<i>Test Violation Total</i>	<i>Total Volume (Gals)</i>	<i>Total in Violation</i>
-----------------	------------------	--------------	----------------------	-----------------------------	----------	-----------------------------	----------------------------	---------------------------

Test Violation Detail Listing

90				Octane		13.12%		
74				Flash Point		10.79%		
203				Oxygenates		29.59%		
77				Vapor Pressure		11.22%		
77				Workmanship (Appearance)		11.22%		
72				Phase Separation		10.50%		
10				Saybolt Color		1.46%		
1				Sediment & Water		0.15%		
8				Sulfur		1.17%		
30				Distillation		4.37%		
1				Cetane Index		0.15%		
1				Acid Number		0.15%		
14				Biodiesel Blend		2.04%		
16				Oxidation		2.33%		
3				E-85 EtOH & Higher Alcohols		0.44%		
6				E-85 Hydrocarbons & Aliphatic Ethers		0.87%		
3				Volatility		0.44%		

Tennessee Department of Agriculture Business Type Violation Analysis Report

Data Sorted with All Parameters

PULL DATE ranges from 7/1/2009 TO 6/30/2010

Today: 01/06/2011

<i>Bus Type</i>	<i>Prod Code</i>	<i>Grade</i>	<i>Total Samples</i>	<i>Samples in Violation</i>	<i>%</i>	<i>Test Violation Total</i>	<i>Total Volume (Gals)</i>	<i>Total in Violation</i>
Terminal								
	AG	100	1	0	0.00	0	437,845	0
	AG	100LL	2	0	0.00	0	340,199	0
		Subtotal:	3	0	0.00	0	778,044	0
	BD	BDBS	2	2	100.00	6	3,713	3,713
	BD	BDBS15	12	5	41.67	10	139,769	24,675
		Subtotal:	14	7	50.00	16	143,482	28,388
	BDB	B20 ULSD	1	1	100.00	1	3,897	3,897
	BDB	B5 LS	1	0	0.00	0	423,000	0
		Subtotal:	2	1	50.00	1	426,897	3,897
	D	2D LS	19	0	0.00	0	14,260,443	0
	D	2D ULSD 1!	74	1	1.35	1	37,555,142	108,948
		Subtotal:	93	1	1.08	1	51,815,585	108,948
	DFE	E100	52	0	0.00	0	20,403,357	0
		Subtotal:	52	0	0.00	0	20,403,357	0
	G	PU	69	0	0.00	0	26,589,902	0
	G	PU BS	6	0	0.00	0	4,033,520	0
	G	RU	94	0	0.00	0	119,590,817	0
	G	RU BS	33	0	0.00	0	50,923,683	0
		Subtotal:	202	0	0.00	0	201,137,922	0
	JF	JA	3	0	0.00	0	3,024,605	0
		Subtotal:	3	0	0.00	0	3,024,605	0
	K	1K	2	0	0.00	0	305,802	0
		Subtotal:	2	0	0.00	0	305,802	0
		Total:	371	9	2.43	18	278,035,694	141,233

Tennessee Department of Agriculture Business Type Violation Analysis Report

Data Sorted with All Parameters

PULL DATE ranges from 7/1/2009 TO 6/30/2010

Today: 01/06/2011

<i>Bus Type</i>	<i>Prod Code</i>	<i>Grade</i>	<i>Total Samples</i>	<i>Samples in Violation</i>	<i>%</i>	<i>Test Violation Total</i>	<i>Total Volume (Gals)</i>	<i>Total in Violation</i>
-----------------	------------------	--------------	----------------------	-----------------------------	----------	-----------------------------	----------------------------	---------------------------

Test Violation Detail Listing

1				Flash Point		5.56%		
1				Sediment & Water		5.56%		
2				Sulfur		11.11%		
2				Acid Number		11.11%		
1				Glycerine		5.56%		
1				Sulfated Ash		5.56%		
2				Phosphorous		11.11%		
3				Oxidation		16.67%		
5				Filtration		27.78%		

Tennessee Department of Agriculture Inspection Type Violation Analysis Report

PULL DATE ranges from 7/1/2009 TO 6/30/2010

8/11/2010

<i>Insp Type</i>	<i>Prod Code</i>	<i>Grade</i>	<i>Total Samples</i>	<i>Samples in Violation</i>	<i>%</i>	<i>Test Violation Total</i>	<i>Total Volume (Gals)</i>	<i>Total in Violation</i>
Complaint								
	D	2D LS	1	0	0.00	0	3,700	0
	D	2D ULSD 1!	17	0	0.00	0	66,337	0
		Subtotal:	18	0	0.00	0	70,037	0
	E85	E-85	4	3	75.00	6	16,447	15,334
		Subtotal:	4	3	75.00	6	16,447	15,334
	G	MG	3	1	33.33	3	4,586	1,201
	G	PU	13	7	53.85	15	134,008	9,107
	G	RU	31	3	9.68	7	180,897	16,198
		Subtotal:	47	11	23.40	25	319,491	26,506
	K	1K	4	0	0.00	0	4,134	0
		Subtotal:	4	0	0.00	0	4,134	0
		Total:	73	14	19.18	31	410,109	41,840

Test Violation Detail Listing

4	Octane	12.90%
6	Vapor Pressure	19.35%
6	Workmanship (Appearance)	19.35%
6	Phase Separation	19.35%
3	Distillation	9.68%
1	E-85 EtOH & Higher Alcohols	3.23%
3	E-85 Hydrocarbons & Aliphatic Ethers	9.68%
1	E85 Copper	3.23%
1	Volatility	3.23%

Tennessee Department of Agriculture Inspection Type Violation Analysis Report

PULL DATE ranges from 7/1/2009 TO 6/30/2010

8/11/2010

<i>Insp Type</i>	<i>Prod Code</i>	<i>Grade</i>	<i>Total Samples</i>	<i>Samples in Violation</i>	<i>%</i>	<i>Test Violation Total</i>	<i>Total Volume (Gals)</i>	<i>Total in Violation</i>
Follow-Up	BD	BDBS15	5	2	40.00	4	16,470	7,000
	Subtotal:		5	2	40.00	4	16,470	7,000
	BDB	B20 ULSD	2	0	0.00	0	2,995	0
	BDB	B5-20 ULSD	1	0	0.00	0	1,700	0
	Subtotal:		3	0	0.00	0	4,695	0
	D	2D	1	0	0.00	0	4,445	0
	D	2D LS	13	1	7.69	1	58,253	8,433
	D	2D ULSD 1!	27	2	7.41	2	92,636	4,872
	Subtotal:		41	3	7.32	3	155,334	13,305
	E85	E-85	4	2	50.00	3	9,597	5,284
	Subtotal:		4	2	50.00	3	9,597	5,284
	G	MG	30	8	26.67	12	80,573	25,567
	G	PU	32	9	28.13	12	61,810	13,813
	G	RU	12	0	0.00	0	62,668	0
	Subtotal:		74	17	22.97	24	205,051	39,380
	K	1K	1	0	0.00	0	836	0
	Subtotal:		1	0	0.00	0	836	0
	Total:		128	24	18.75	34	391,983	64,969

Tennessee Department of Agriculture Inspection Type Violation Analysis Report

PULL DATE ranges from 7/1/2009 TO 6/30/2010

8/11/2010

<i>Insp Type</i>	<i>Prod Code</i>	<i>Grade</i>	<i>Total Samples</i>	<i>Samples in Violation</i>	<i>%</i>	<i>Test Violation Total</i>	<i>Total Volume (Gals)</i>	<i>Total in Violation</i>
----------------------	----------------------	--------------	--------------------------	-------------------------------------	----------	-------------------------------------	------------------------------------	-----------------------------------

Test Violation Detail Listing

7						Octane	20.59%	
3						Flash Point	8.82%	
4						Oxygenates	11.76%	
5						Vapor Pressure	14.71%	
4						Workmanship (Appearance)	11.76%	
4						Phase Separation	11.76%	
1						Sulfur	2.94%	
1						Distillation	2.94%	
1						Glycerine	2.94%	
1						Oxidation	2.94%	
1						E-85 EtOH & Higher Alcohols	2.94%	
1						E-85 Hydrocarbons & Aliphatic Ethers	2.94%	
1						Filtration	2.94%	

Tennessee Department of Agriculture Inspection Type Violation Analysis Report

PULL DATE ranges from 7/1/2009 TO 6/30/2010

8/11/2010

<i>Insp Type</i>	<i>Prod Code</i>	<i>Grade</i>	<i>Total Samples</i>	<i>Samples in Violation</i>	<i>%</i>	<i>Test Violation Total</i>	<i>Total Volume (Gals)</i>	<i>Total in Violation</i>
Office Request								
	AG	100LL	1	0	0.00	0	128,000	0
Subtotal:			1	0	0.00	0	128,000	0
	BD	BDBS	1	1	100.00	1	3,000	3,000
	BD	BDBS15	2	1	50.00	1	13,925	6,925
Subtotal:			3	2	66.67	2	16,925	9,925
	BDB	B20 ULSD	5	4	80.00	5	11,419	11,419
	BDB	B20LS	1	0	0.00	0	1,845	0
	BDB	B5 LS	1	0	0.00	0	423,000	0
	BDB	B5-20 ULSD	1	1	100.00	1	1,708	1,708
Subtotal:			8	5	62.50	6	437,972	13,127
	D	2D	1	0	0.00	0	2,000	0
	D	2D LS	3	0	0.00	0	1,057,496	0
	D	2D ULSD 1!	20	1	5.00	1	7,945,573	3,129
Subtotal:			24	1	4.17	1	9,005,069	3,129
	DFE	E100	8	0	0.00	0	2,803,835	0
Subtotal:			8	0	0.00	0	2,803,835	0
	E85	E-85	3	0	0.00	0	25,733	0
Subtotal:			3	0	0.00	0	25,733	0
	G	MG	1	0	0.00	0	1,283	0
	G	PU	16	1	6.25	1	4,111,964	1,013
	G	PU BS	2	0	0.00	0	744,192	0

Tennessee Department of Agriculture Inspection Type Violation Analysis Report

PULL DATE ranges from 7/1/2009 TO 6/30/2010

8/11/2010

<i>Insp Type</i>	<i>Prod Code</i>	<i>Grade</i>	<i>Total Samples</i>	<i>Samples in Violation</i>	<i>%</i>	<i>Test Violation Total</i>	<i>Total Volume (Gals)</i>	<i>Total in Violation</i>
	G	RU	24	1	4.17	2	20,781,653	4,500
	G	RU BS	8	0	0.00	0	14,358,494	0
Subtotal:			51	2	3.92	3	39,997,586	5,513
Total:			98	10	10.20	12	52,415,120	31,694

Test Violation Detail Listing

1	Octane	8.33%
1	Flash Point	8.33%
1	Workmanship (Appearance)	8.33%
1	Phase Separation	8.33%
2	Biodiesel Blend	16.67%
4	Oxidation	33.33%
2	Filtration	16.67%

Tennessee Department of Agriculture Inspection Type Violation Analysis Report

PULL DATE ranges from 7/1/2009 TO 6/30/2010

8/11/2010

<i>Insp Type</i>	<i>Prod Code</i>	<i>Grade</i>	<i>Total Samples</i>	<i>Samples in Violation</i>	<i>%</i>	<i>Test Violation Total</i>	<i>Total Volume (Gals)</i>	<i>Total in Violation</i>
Random								
	AG	100	1	0	0.00	0	437,845	0
	AG	100LL	7	0	0.00	0	231,865	0
		Subtotal:	8	0	0.00	0	669,710	0
	BD	BDBS	3	2	66.67	7	1,856	1,513
	BD	BDBS15	10	4	40.00	7	129,934	18,976
		Subtotal:	13	6	46.15	14	131,790	20,489
	BDB	B10LS	1	0	0.00	0	815	0
	BDB	B20 ULSD	34	19	55.88	24	52,341	23,917
	BDB	B20LS	3	2	66.67	2	45,911	44,061
	BDB	B5-20	1	0	0.00	0	4,026	0
	BDB	B5-20 ULSD	10	4	40.00	4	21,781	4,121
		Subtotal:	49	25	51.02	30	124,874	72,099
	D	2D	22	2	9.09	3	50,874	1,938
	D	2D LS	241	15	6.22	15	14,043,780	40,590
	D	2D ULSD 1!	1,567	62	3.96	64	36,549,791	242,271
		Subtotal:	1830	79	4.32	82	50,644,445	284,799
	DFE	E100	46	0	0.00	0	18,086,859	0
		Subtotal:	46	0	0.00	0	18,086,859	0
	E85	E-85	46	12	26.09	18	102,048	26,298
		Subtotal:	46	12	26.09	18	102,048	26,298
	G	MG	1,371	99	7.22	144	3,750,554	250,334

Tennessee Department of Agriculture Inspection Type Violation Analysis Report

PULL DATE ranges from 7/1/2009 TO 6/30/2010

8/11/2010

<i>Insp Type</i>	<i>Prod Code</i>	<i>Grade</i>	<i>Total Samples</i>	<i>Samples in Violation</i>	<i>%</i>	<i>Test Violation Total</i>	<i>Total Volume (Gals)</i>	<i>Total in Violation</i>
G	PU		1,709	130	7.61	186	26,671,611	223,606
G	PU BS		4	0	0.00	0	3,289,328	0
G	RU		2,333	102	4.37	169	112,183,953	490,014
G	RU BS		25	0	0.00	0	36,565,189	0
Subtotal:			5442	331	6.08	499	182,460,635	963,954
JF	JA		9	0	0.00	0	3,069,628	0
Subtotal:			9	0	0.00	0	3,069,628	0
K	1K		443	12	2.71	13	739,860	12,796
Subtotal:			443	12	2.71	13	739,860	12,796
Total:			7886	465	5.90	656	256,029,849	1,380,435

Tennessee Department of Agriculture Inspection Type Violation Analysis Report

PULL DATE ranges from 7/1/2009 TO 6/30/2010

8/11/2010

<i>Insp Type</i>	<i>Prod Code</i>	<i>Grade</i>	<i>Total Samples</i>	<i>Samples in Violation</i>	<i>%</i>	<i>Test Violation Total</i>	<i>Total Volume (Gals)</i>	<i>Total in Violation</i>
------------------	------------------	--------------	----------------------	-----------------------------	----------	-----------------------------	----------------------------	---------------------------

Test Violation Detail Listing

84						Octane		12.80%
73						Flash Point		11.13%
204						Oxygenates		31.10%
66						Vapor Pressure		10.06%
67						Workmanship (Appearance)		10.21%
61						Phase Separation		9.30%
10						Saybolt Color		1.52%
3						Sediment & Water		0.46%
10						Sulfur		1.52%
27						Distillation		4.12%
1						Cetane Index		0.15%
4						Acid Number		0.61%
1						Sulfated Ash		0.15%
1						Carbon Residue		0.15%
2						Phosphorous		0.30%
14						Biodiesel Blend		2.13%
16						Oxidation		2.44%
2						E-85 EtOH & Higher Alcohols		0.30%
5						E-85 Hydrocarbons & Aliphatic Ethers		0.76%
1						E85 Chlorides		0.15%
2						Volatility		0.30%
2						Filtration		0.30%

Tennessee Department of Agriculture County Summary Short Report

PULL DATE ranges from 7/1/2009 TO 6/30/2010

8/11/2010

<i>County</i>	<i>Prod Code</i>	<i>Total Samples</i>	<i>Samples in Violation</i>	<i>%</i>	<i>Test Violation Total</i>	<i>Total Volume (Gals)</i>	<i>Total in Violation</i>
Anderson							
	D	21	0	0.00	0	53,368.00	0
	E85	2	1	50.00	1	4,042.00	2,249
	G	67	7	10.45	14	265,539.00	23,024
	Total:	90	8	8.89	15	322,949.00	25,273
Bedford							
	BDB	6	3	50.00	5	9,757.00	4,449
	D	18	0	0.00	0	60,494.00	0
	G	58	3	5.17	3	132,769.00	5,919
	K	5	0	0.00	0	2,102.00	0
	Total:	87	6	6.90	8	205,122.00	10,368
Benton							
	D	10	1	10.00	1	42,403.00	370
	G	27	2	7.41	3	90,918.00	1,791
	K	2	0	0.00	0	4,299.00	0
	Total:	39	3	7.69	4	137,620.00	2,161
Bledsoe							
	D	5	0	0.00	0	8,156.00	0
	G	16	0	0.00	0	22,168.00	0
	K	1	0	0.00	0	70.00	0
	Total:	22	0	0.00	0	30,394.00	0
Blount							
	BD	4	2	50.00	3	18,769.00	8,026
	BDB	6	3	50.00	3	9,208.00	3,498
	D	36	0	0.00	0	66,967.00	0

Tennessee Department of Agriculture County Summary Short Report

PULL DATE ranges from 7/1/2009 TO 6/30/2010

8/11/2010

<i>County</i>	<i>Prod Code</i>	<i>Total Samples</i>	<i>Samples in Violation</i>	<i>%</i>	<i>Test Violation Total</i>	<i>Total Volume (Gals)</i>	<i>Total in Violation</i>
	G	91	2	2.20	2	400,074.00	3,985
	K	9	0	0.00	0	14,002.00	0
	Total:	146	7	4.79	8	509,020.00	15,509
Bradley	BDB	1	1	100.00	2	2,622.00	2,622
	D	32	0	0.00	0	77,317.00	0
	G	112	7	6.25	13	339,750.20	14,863
	K	10	1	10.00	1	17,901.00	3,098
	Total:	155	9	5.81	16	437,590.20	20,583
Campbell	D	21	0	0.00	0	62,533.00	0
	G	42	4	9.52	4	159,858.00	26,703
	K	1	0	0.00	0	2,663.00	0
	Total:	64	4	6.25	4	225,054.00	26,703
Cannon	D	5	0	0.00	0	8,940.00	0
	G	14	1	7.14	1	22,658.00	1,905
	K	1	0	0.00	0	98.00	0
	Total:	20	1	5.00	1	31,696.00	1,905
Carroll	D	9	1	11.11	1	22,980.00	188
	G	35	2	5.71	4	115,053.00	8,953
	K	3	0	0.00	0	6,627.00	0
	Total:	47	3	6.38	5	144,660.00	9,141

Tennessee Department of Agriculture County Summary Short Report

PULL DATE ranges from 7/1/2009 TO 6/30/2010

8/11/2010

<i>County</i>	<i>Prod Code</i>	<i>Total Samples</i>	<i>Samples in Violation</i>	<i>%</i>	<i>Test Violation Total</i>	<i>Total Volume (Gals)</i>	<i>Total in Violation</i>
Carter							
	D	13	1	7.69	1	25,337.00	1,761
	G	41	3	7.32	3	113,466.00	7,595
	K	2	0	0.00	0	1,711.00	0
	Total:	56	4	7.14	4	140,514.00	9,356
Cheatham							
	D	16	0	0.00	0	282,826.00	0
	G	46	8	17.39	12	124,040.00	8,627
	K	6	0	0.00	0	3,969.00	0
	Total:	68	8	11.76	12	410,835.00	8,627
Chester							
	D	7	0	0.00	0	18,367.00	0
	G	17	1	5.88	1	30,005.00	2,064
	Total:	24	1	4.17	1	48,372.00	2,064
Claiborne							
	D	16	1	6.25	1	32,544.00	849
	G	36	2	5.56	3	80,830.00	4,611
	K	6	0	0.00	0	3,958.00	0
	Total:	58	3	5.17	4	117,332.00	5,460
Clay							
	D	4	0	0.00	0	5,209.00	0
	G	15	1	6.67	2	30,089.00	2,244
	K	1	0	0.00	0	110.00	0
	Total:	20	1	5.00	2	35,408.00	2,244
Cocke							
	BDB	3	1	33.33	1	7,150.00	2,700

Tennessee Department of Agriculture County Summary Short Report

PULL DATE ranges from 7/1/2009 TO 6/30/2010

8/11/2010

<i>County</i>	<i>Prod Code</i>	<i>Total Samples</i>	<i>Samples in Violation</i>	<i>%</i>	<i>Test Violation Total</i>	<i>Total Volume (Gals)</i>	<i>Total in Violation</i>
	D	12	0	0.00	0	27,394.00	0
	E85	2	1	50.00	1	1,868.00	1,300
	G	48	4	8.33	7	155,643.00	17,625
	K	3	0	0.00	0	1,500.00	0
	Total:	68	6	8.82	9	193,555.00	21,625
Coffee							
	BD	5	2	40.00	3	27,500.00	14,000
	D	23	0	0.00	0	79,726.00	0
	E85	1	1	100.00	2	1,243.00	1,243
	G	56	6	10.71	9	201,294.00	15,473
	K	8	1	12.50	1	5,269.00	462
	Total:	93	10	10.75	15	315,032.00	31,178
Crockett							
	D	10	1	10.00	1	47,976.00	8,626
	G	18	1	5.56	2	50,700.00	1,941
	K	1	0	0.00	0	104.00	0
	Total:	29	2	6.90	3	98,780.00	10,567
Cumberland							
	BDB	1	0	0.00	0	3,799.00	0
	D	27	0	0.00	0	77,961.00	0
	E85	1	0	0.00	0	4,394.00	0
	G	68	9	13.24	15	178,341.00	15,110
	K	3	0	0.00	0	2,100.00	0

Tennessee Department of Agriculture County Summary Short Report

PULL DATE ranges from 7/1/2009 TO 6/30/2010

8/11/2010

<i>County</i>	<i>Prod Code</i>	<i>Total Samples</i>	<i>Samples in Violation</i>	<i>%</i>	<i>Test Violation Total</i>	<i>Total Volume (Gals)</i>	<i>Total in Violation</i>
	Total:	100	9	9.00	15	266,595.00	15,110
Davidson	AG	3	0	0.00	0	12,880.00	0
	BD	8	5	62.50	13	114,982.20	14,388
	BDB	16	11	68.75	12	62,330.00	51,987
	D	170	6	3.53	6	19,468,498.40	12,398
	DFE	23	0	0.00	0	7,097,995.00	0
	E85	4	0	0.00	0	6,435.00	0
	G	462	30	6.49	44	96,390,199.70	122,813
	JF	3	0	0.00	0	35,989.00	0
	K	47	1	2.13	1	97,211.00	1,676
	Total:	736	53	7.20	76	123,286,520.30	203,262
Decatur	D	10	2	20.00	2	30,216.00	10,768
	G	23	0	0.00	0	72,270.00	0
	K	2	0	0.00	0	526.00	0
	Total:	35	2	5.71	2	103,012.00	10,768
Dekalb	D	12	0	0.00	0	31,330.00	0
	G	29	3	10.34	3	87,507.00	5,379
	K	3	0	0.00	0	4,571.00	0
	Total:	44	3	6.82	3	123,408.00	5,379
Dickson	BDB	1	0	0.00	0	4,026.00	0

Tennessee Department of Agriculture County Summary Short Report

PULL DATE ranges from 7/1/2009 TO 6/30/2010

8/11/2010

<i>County</i>	<i>Prod Code</i>	<i>Total Samples</i>	<i>Samples in Violation</i>	<i>%</i>	<i>Test Violation Total</i>	<i>Total Volume (Gals)</i>	<i>Total in Violation</i>
	D	31	4	12.90	4	133,660.00	4,727
	E85	1	0	0.00	0	3,820.00	0
	G	57	5	8.77	7	196,073.00	15,247
	K	5	1	20.00	2	3,390.00	123
	Total:	95	10	10.53	13	340,969.00	20,097
Dyer	D	11	0	0.00	0	37,440.00	0
	G	42	1	2.38	1	117,214.00	3,943
	K	3	0	0.00	0	3,532.00	0
	Total:	56	1	1.79	1	158,186.00	3,943
Fayette	D	13	1	7.69	1	43,273.00	2,010
	G	30	1	3.33	2	58,666.00	3,327
	K	1	0	0.00	0	490.00	0
	Total:	44	2	4.55	3	102,429.00	5,337
Fentress	D	8	0	0.00	0	17,382.00	0
	G	16	2	12.50	3	58,171.00	7,161
	K	1	0	0.00	0	1,837.00	0
	Total:	25	2	8.00	3	77,390.00	7,161
Franklin	D	15	1	6.67	1	40,112.00	2,974
	G	56	4	7.14	5	165,383.00	9,623
	K	4	0	0.00	0	1,945.00	0

Tennessee Department of Agriculture County Summary Short Report

PULL DATE ranges from 7/1/2009 TO 6/30/2010

8/11/2010

<i>County</i>	<i>Prod Code</i>	<i>Total Samples</i>	<i>Samples in Violation</i>	<i>%</i>	<i>Test Violation Total</i>	<i>Total Volume (Gals)</i>	<i>Total in Violation</i>
	Total:	75	5	6.67	6	207,440.00	12,597
Gibson	D	22	1	4.55	1	82,469.00	371
	G	50	4	8.00	7	166,051.00	11,071
	K	5	0	0.00	0	6,652.00	0
	Total:	77	5	6.49	8	255,172.00	11,442
Giles	D	18	0	0.00	0	70,654.00	0
	G	39	2	5.13	3	95,740.20	5,571
	K	9	0	0.00	0	5,677.00	0
	Total:	66	2	3.03	3	172,071.20	5,571
Grainger	D	7	2	28.57	2	16,434.00	5,455
	G	23	2	8.70	3	34,606.00	1,465
	Total:	30	4	13.33	5	51,040.00	6,920
Greene	BDB	1	1	100.00	1	510.00	510
	D	35	2	5.71	2	104,133.00	10,000
	E85	1	0	0.00	0	640.00	0
	G	72	3	4.17	3	277,814.88	3,677
	K	7	1	14.29	1	4,250.00	325
	Total:	116	7	6.03	7	387,347.88	14,512
Grundy	D	10	1	10.00	1	10,870.00	574
	G	20	1	5.00	1	37,593.00	2,021

Tennessee Department of Agriculture County Summary Short Report

PULL DATE ranges from 7/1/2009 TO 6/30/2010

8/11/2010

<i>County</i>	<i>Prod Code</i>	<i>Total Samples</i>	<i>Samples in Violation</i>	<i>%</i>	<i>Test Violation Total</i>	<i>Total Volume (Gals)</i>	<i>Total in Violation</i>
	K	2	0	0.00	0	2,104.00	0
	Total:	32	2	6.25	2	50,567.00	2,595
Hamblen	D	18	1	5.56	1	34,414.00	1,458
	G	54	2	3.70	5	154,812.00	2,564
	K	1	0	0.00	0	804.00	0
	Total:	73	3	4.11	6	190,030.00	4,022
Hamilton	BDB	2	1	50.00	1	5,939.00	3,897
	D	69	0	0.00	0	7,195,230.00	0
	DFE	4	0	0.00	0	156,036.51	0
	G	392	34	8.67	54	13,634,361.00	108,750
	K	21	0	0.00	0	21,066.00	0
	Total:	488	35	7.17	55	21,012,632.51	112,647
Hancock	D	2	0	0.00	0	876.00	0
	G	4	0	0.00	0	7,188.00	0
	Total:	6	0	0.00	0	8,064.00	0
Hardeman	D	23	4	17.39	4	49,558.00	9,132
	G	38	3	7.89	6	59,856.00	9,451
	K	3	0	0.00	0	9,418.00	0
	Total:	64	7	10.94	10	118,832.00	18,583
Hardin	D	15	1	6.67	1	46,136.00	1,635

Tennessee Department of Agriculture County Summary Short Report

PULL DATE ranges from 7/1/2009 TO 6/30/2010

8/11/2010

<i>County</i>	<i>Prod Code</i>	<i>Total Samples</i>	<i>Samples in Violation</i>	<i>%</i>	<i>Test Violation Total</i>	<i>Total Volume (Gals)</i>	<i>Total in Violation</i>
	G	36	0	0.00	0	99,078.00	0
	K	4	0	0.00	0	5,136.00	0
	Total:	55	1	1.82	1	150,350.00	1,635
Hawkins	D	8	0	0.00	0	21,852.00	0
	G	33	2	6.06	4	111,601.00	14,846
	Total:	41	2	4.88	4	133,453.00	14,846
Haywood	D	12	4	33.33	4	83,131.00	29,805
	G	17	2	11.76	5	47,706.00	4,483
	Total:	29	6	20.69	9	130,837.00	34,288
Henderson	D	13	1	7.69	1	103,376.00	1,497
	G	28	1	3.57	1	115,861.00	16,920
	K	2	0	0.00	0	6,203.00	0
	Total:	43	2	4.65	2	225,440.00	18,417
Henry	D	13	1	7.69	1	44,536.00	769
	G	48	3	6.25	5	153,532.00	6,084
	K	6	0	0.00	0	6,132.00	0
	Total:	67	4	5.97	6	204,200.00	6,853
Hickman	AG	1	0	0.00	0	3,100.00	0
	D	6	0	0.00	0	16,064.00	0
	G	21	0	0.00	0	42,851.30	0

Tennessee Department of Agriculture County Summary Short Report

PULL DATE ranges from 7/1/2009 TO 6/30/2010

8/11/2010

<i>County</i>	<i>Prod Code</i>	<i>Total Samples</i>	<i>Samples in Violation</i>	<i>%</i>	<i>Test Violation Total</i>	<i>Total Volume (Gals)</i>	<i>Total in Violation</i>
	K	3	0	0.00	0	2,223.00	0
	Total:	31	0	0.00	0	64,238.30	0
Houston	D	3	0	0.00	0	3,562.00	0
	G	11	3	27.27	4	24,563.00	7,171
	K	1	0	0.00	0	90.00	0
	Total:	15	3	20.00	4	28,215.00	7,171
Humphreys	AG	1	0	0.00	0	3,400.00	0
	D	13	0	0.00	0	86,101.00	0
	G	31	3	9.68	4	112,317.00	4,985
	JF	1	0	0.00	0	4,000.00	0
	K	1	0	0.00	0	1,015.00	0
	Total:	47	3	6.38	4	206,833.00	4,985
Jackson	D	5	1	20.00	1	1,877.00	541
	G	12	1	8.33	1	16,740.00	2,543
	Total:	17	2	11.76	2	18,617.00	3,084
Jefferson	D	22	1	4.55	1	145,382.00	3,131
	G	40	0	0.00	0	148,527.00	0
	Total:	62	1	1.61	1	293,909.00	3,131
Johnson	D	5	0	0.00	0	11,572.00	0
	G	14	1	7.14	2	28,416.00	1,031

Tennessee Department of Agriculture County Summary Short Report

PULL DATE ranges from 7/1/2009 TO 6/30/2010

8/11/2010

<i>County</i>	<i>Prod Code</i>	<i>Total Samples</i>	<i>Samples in Violation</i>	<i>%</i>	<i>Test Violation Total</i>	<i>Total Volume (Gals)</i>	<i>Total in Violation</i>
	K	1	0	0.00	0	2,931.00	0
	Total:	20	1	5.00	2	42,919.00	1,031
Knox	BD	3	1	33.33	1	2,000.00	1,000
	BDB	3	2	66.67	3	11,671.00	6,812
	D	126	2	1.59	2	17,801,845.00	6,751
	DFE	14	0	0.00	0	5,881,465.00	0
	E85	8	3	37.50	4	40,448.00	8,234
	G	351	25	7.12	44	55,384,248.00	99,083
	JF	2	0	0.00	0	843,386.00	0
	K	15	1	6.67	1	289,646.00	1,054
	Total:	522	34	6.51	55	80,254,709.00	122,934
Lake	D	2	0	0.00	0	3,558.00	0
	G	6	0	0.00	0	18,185.00	0
	K	1	0	0.00	0	526.00	0
	Total:	9	0	0.00	0	22,269.00	0
Lauderdale	D	8	1	12.50	2	23,384.00	5,800
	G	27	0	0.00	0	52,666.00	0
	K	3	0	0.00	0	2,477.00	0
	Total:	38	1	2.63	2	78,527.00	5,800
Lawrence	BD	1	0	0.00	0	1,934.00	0

Tennessee Department of Agriculture County Summary Short Report

PULL DATE ranges from 7/1/2009 TO 6/30/2010

8/11/2010

<i>County</i>	<i>Prod Code</i>	<i>Total Samples</i>	<i>Samples in Violation</i>	<i>%</i>	<i>Test Violation Total</i>	<i>Total Volume (Gals)</i>	<i>Total in Violation</i>
	D	26	1	3.85	1	47,149.50	277
	G	59	2	3.39	2	217,460.10	3,590
	K	7	0	0.00	0	6,593.00	0
	Total:	93	3	3.23	3	273,136.60	3,867
Lewis							
	D	6	0	0.00	0	65,875.00	0
	G	19	1	5.26	1	76,738.00	294
	K	4	0	0.00	0	2,091.00	0
	Total:	29	1	3.45	1	144,704.00	294
Lincoln							
	D	20	0	0.00	0	57,793.00	0
	G	48	2	4.17	2	112,190.00	4,930
	K	6	0	0.00	0	3,374.00	0
	Total:	74	2	2.70	2	173,357.00	4,930
Loudon							
	BDB	1	1	100.00	1	2,693.00	2,693
	D	22	0	0.00	0	52,819.00	0
	G	67	3	4.48	4	208,121.00	4,425
	K	5	0	0.00	0	4,739.00	0
	Total:	95	4	4.21	5	268,372.00	7,118
McMinn							
	BDB	2	1	50.00	1	1,821.00	1,006
	D	21	1	4.76	2	66,764.00	1,753
	E85	1	0	0.00	0	912.00	0

Tennessee Department of Agriculture County Summary Short Report

PULL DATE ranges from 7/1/2009 TO 6/30/2010

8/11/2010

<i>County</i>	<i>Prod Code</i>	<i>Total Samples</i>	<i>Samples in Violation</i>	<i>%</i>	<i>Test Violation Total</i>	<i>Total Volume (Gals)</i>	<i>Total in Violation</i>
	G	78	7	8.97	12	241,091.00	11,061
	K	6	0	0.00	0	5,864.00	0
	Total:	108	9	8.33	15	316,452.00	13,820
McNairy	D	7	1	14.29	1	15,246.00	479
	G	27	0	0.00	0	56,857.00	0
	K	3	0	0.00	0	3,202.00	0
	Total:	37	1	2.70	1	75,305.00	479
Macon	D	10	2	20.00	2	19,570.00	809
	G	17	1	5.88	2	67,677.00	2,263
	K	3	0	0.00	0	2,702.00	0
	Total:	30	3	10.00	4	89,949.00	3,072
Madison	BDB	1	0	0.00	0	2,719.00	0
	D	36	2	5.56	2	238,002.00	10,444
	E85	3	2	66.67	3	19,805.00	14,047
	G	104	3	2.88	4	355,372.00	14,606
	JF	1	0	0.00	0	3,200.00	0
	K	5	0	0.00	0	5,076.00	0
	Total:	150	7	4.67	9	624,174.00	39,097
Marion	D	11	0	0.00	0	40,978.00	0
	G	40	1	2.50	2	127,317.00	1,112

Tennessee Department of Agriculture County Summary Short Report

PULL DATE ranges from 7/1/2009 TO 6/30/2010

8/11/2010

<i>County</i>	<i>Prod Code</i>	<i>Total Samples</i>	<i>Samples in Violation</i>	<i>%</i>	<i>Test Violation Total</i>	<i>Total Volume (Gals)</i>	<i>Total in Violation</i>
	K	4	0	0.00	0	3,715.00	0
	Total:	55	1	1.82	2	172,010.00	1,112
Marshall	D	19	2	10.53	2	38,421.00	3,784
	E85	5	1	20.00	2	10,023.00	2,018
	G	36	3	8.33	4	91,556.00	2,908
	K	5	1	20.00	1	4,603.00	220
	Total:	65	7	10.77	9	144,603.00	8,930
Maury	AG	1	0	0.00	0	286.00	0
	BDB	3	0	0.00	0	4,935.00	0
	D	25	0	0.00	0	159,232.00	0
	E85	6	1	16.67	2	27,685.00	3,998
	G	72	4	5.56	5	237,858.30	10,627
	JF	1	0	0.00	0	1,834.00	0
	K	10	0	0.00	0	7,993.00	0
	Total:	118	5	4.24	7	439,823.30	14,625
Meigs	D	6	1	16.67	1	16,633.00	185
	G	14	1	7.14	2	34,301.00	2,563
	K	2	0	0.00	0	2,835.00	0
	Total:	22	2	9.09	3	53,769.00	2,748
Monroe	BDB	1	0	0.00	0	2,146.00	0

Tennessee Department of Agriculture County Summary Short Report

PULL DATE ranges from 7/1/2009 TO 6/30/2010

8/11/2010

<i>County</i>	<i>Prod Code</i>	<i>Total Samples</i>	<i>Samples in Violation</i>	<i>%</i>	<i>Test Violation Total</i>	<i>Total Volume (Gals)</i>	<i>Total in Violation</i>
	D	15	1	6.67	1	48,492.00	236
	G	65	3	4.62	4	184,599.00	7,755
	K	9	1	11.11	1	7,170.00	2,671
	Total:	90	5	5.56	6	242,407.00	10,662
Montgomery	D	39	1	2.56	1	111,827.00	1,086
	E85	8	1	12.50	2	10,336.00	3,399
	G	100	5	5.00	7	323,727.00	11,349
	K	12	0	0.00	0	10,473.00	0
	Total:	159	7	4.40	10	456,363.00	15,834
Moore	D	2	0	0.00	0	5,169.00	0
	G	5	0	0.00	0	12,567.00	0
	Total:	7	0	0.00	0	17,736.00	0
Morgan	D	13	2	15.38	2	19,692.00	1,313
	G	26	2	7.69	3	40,895.00	3,405
	K	1	0	0.00	0	137.00	0
	Total:	40	4	10.00	5	60,724.00	4,718
Obion	D	9	0	0.00	0	31,915.00	0
	DFE	4	0	0.00	0	3,268,000.00	0
	G	27	0	0.00	0	92,623.00	0
	K	5	0	0.00	0	2,136.00	0

Tennessee Department of Agriculture County Summary Short Report

PULL DATE ranges from 7/1/2009 TO 6/30/2010

8/11/2010

<i>County</i>	<i>Prod Code</i>	<i>Total Samples</i>	<i>Samples in Violation</i>	<i>%</i>	<i>Test Violation Total</i>	<i>Total Volume (Gals)</i>	<i>Total in Violation</i>
	Total:	45	0	0.00	0	3,394,674.00	0
Overton	D	7	0	0.00	0	22,194.00	0
	G	27	1	3.70	1	47,623.00	2,586
	K	1	0	0.00	0	764.00	0
	Total:	35	1	2.86	1	70,581.00	2,586
Perry	D	7	0	0.00	0	11,999.41	0
	G	13	1	7.69	2	26,745.30	1,908
	K	2	0	0.00	0	1,927.00	0
	Total:	22	1	4.55	2	40,671.71	1,908
Pickett	D	4	0	0.00	0	8,819.00	0
	G	10	0	0.00	0	25,778.00	0
	Total:	14	0	0.00	0	34,597.00	0
Polk	D	13	1	7.69	1	24,886.00	1,241
	G	33	0	0.00	0	78,900.00	0
	K	3	0	0.00	0	2,853.00	0
	Total:	49	1	2.04	1	106,639.00	1,241
Putnam	BDB	1	0	0.00	0	0.00	0
	D	24	0	0.00	0	116,116.00	0
	G	65	5	7.69	7	253,764.00	15,079
	K	5	0	0.00	0	2,055.00	0

Tennessee Department of Agriculture County Summary Short Report

PULL DATE ranges from 7/1/2009 TO 6/30/2010

8/11/2010

<i>County</i>	<i>Prod Code</i>	<i>Total Samples</i>	<i>Samples in Violation</i>	<i>%</i>	<i>Test Violation Total</i>	<i>Total Volume (Gals)</i>	<i>Total in Violation</i>
	Total:	95	5	5.26	7	371,935.00	15,079
Rhea	D	19	0	0.00	0	32,125.00	0
	G	48	1	2.08	3	105,230.00	73
	K	2	0	0.00	0	1,861.00	0
	Total:	69	1	1.45	3	139,216.00	73
Roane	BDB	1	0	0.00	0	940.00	0
	D	15	2	13.33	2	34,876.00	8,823
	E85	1	0	0.00	0	1,113.00	0
	G	50	5	10.00	6	142,637.00	6,419
	K	7	1	14.29	1	12,777.00	2,189
	Total:	74	8	10.81	9	192,343.00	17,431
Robertson	D	33	2	6.06	2	105,841.00	2,081
	E85	1	0	0.00	0	749.00	0
	G	80	13	16.25	21	289,775.00	41,740
	K	18	0	0.00	0	9,394.00	0
	Total:	132	15	11.36	23	405,759.00	43,821
Rutherford	BDB	4	2	50.00	3	5,151.00	1,392
	D	39	2	5.13	2	248,135.00	5,381
	E85	2	1	50.00	1	5,683.00	3,704
	G	141	11	7.80	22	542,691.00	55,625

Tennessee Department of Agriculture County Summary Short Report

PULL DATE ranges from 7/1/2009 TO 6/30/2010

8/11/2010

<i>County</i>	<i>Prod Code</i>	<i>Total Samples</i>	<i>Samples in Violation</i>	<i>%</i>	<i>Test Violation Total</i>	<i>Total Volume (Gals)</i>	<i>Total in Violation</i>
	K	25	0	0.00	0	24,676.00	0
	Total:	211	16	7.58	28	826,336.00	66,102
Scott	D	15	2	13.33	2	27,584.00	1,148
	G	29	3	10.34	5	87,750.00	1,713
	K	1	0	0.00	0	108.00	0
	Total:	45	5	11.11	7	115,442.00	2,861
Sequatchie	D	5	0	0.00	0	12,066.00	0
	G	17	3	17.65	3	62,695.00	8,110
	Total:	22	3	13.64	3	74,761.00	8,110
Sevier	D	44	0	0.00	0	102,660.00	0
	G	124	3	2.42	5	551,838.00	9,913
	K	5	0	0.00	0	7,645.00	0
	Total:	173	3	1.73	5	662,143.00	9,913
Shelby	AG	3	0	0.00	0	778,044.00	0
	BDB	1	0	0.00	0	423,000.00	0
	D	89	7	7.87	8	10,414,547.00	118,141
	DFE	9	0	0.00	0	4,487,197.00	0
	G	519	22	4.24	34	45,162,581.00	41,714
	JF	1	0	0.00	0	2,181,219.00	0
	K	5	0	0.00	0	3,106.00	0

Tennessee Department of Agriculture County Summary Short Report

PULL DATE ranges from 7/1/2009 TO 6/30/2010

8/11/2010

<i>County</i>	<i>Prod Code</i>	<i>Total Samples</i>	<i>Samples in Violation</i>	<i>%</i>	<i>Test Violation Total</i>	<i>Total Volume (Gals)</i>	<i>Total in Violation</i>
	Total:	627	29	4.63	42	63,449,694.00	159,855
Smith	D	10	1	10.00	1	119,331.00	371
	G	21	0	0.00	0	61,304.00	0
	K	4	0	0.00	0	3,671.00	0
	Total:	35	1	2.86	1	184,306.00	371
Stewart	D	5	0	0.00	0	8,140.00	0
	G	20	0	0.00	0	30,608.00	0
	K	3	1	33.33	1	1,323.00	502
	Total:	28	1	3.57	1	40,071.00	502
Sullivan	D	40	2	5.00	2	108,883.00	4,223
	E85	4	2	50.00	4	4,064.00	2,070
	G	114	4	3.51	5	373,635.00	11,933
	K	7	0	0.00	0	6,922.00	0
	Total:	165	8	4.85	11	493,504.00	18,226
Sumner	D	49	1	2.04	1	96,002.00	79
	E85	1	0	0.00	0	3,644.00	0
	G	126	14	11.11	19	387,601.00	28,713
	K	12	0	0.00	0	9,718.00	0
	Total:	188	15	7.98	20	496,965.00	28,792
Tipton	D	18	0	0.00	0	59,017.00	0

Tennessee Department of Agriculture County Summary Short Report

PULL DATE ranges from 7/1/2009 TO 6/30/2010

8/11/2010

<i>County</i>	<i>Prod Code</i>	<i>Total Samples</i>	<i>Samples in Violation</i>	<i>%</i>	<i>Test Violation Total</i>	<i>Total Volume (Gals)</i>	<i>Total in Violation</i>
	G	40	1	2.50	1	115,874.00	2,654
	K	3	0	0.00	0	1,563.00	0
	Total:	61	1	1.64	1	176,454.00	2,654
Trousdale	D	3	0	0.00	0	7,146.00	0
	G	7	1	14.29	1	19,115.00	4,288
	Total:	10	1	10.00	1	26,261.00	4,288
Unicoi	D	5	0	0.00	0	13,680.00	0
	G	15	1	6.67	1	45,858.00	2,869
	K	2	0	0.00	0	1,137.00	0
	Total:	22	1	4.55	1	60,675.00	2,869
Union	D	7	0	0.00	0	9,795.00	0
	G	24	5	20.83	7	65,353.00	3,989
	K	1	0	0.00	0	535.00	0
	Total:	32	5	15.63	7	75,683.00	3,989
Van Buren	D	5	0	0.00	0	7,465.00	0
	G	7	0	0.00	0	12,261.00	0
	Total:	12	0	0.00	0	19,726.00	0
Warren	D	23	2	8.70	2	51,021.00	3,152
	G	54	4	7.41	6	161,130.00	9,143
	K	3	0	0.00	0	2,637.00	0

Tennessee Department of Agriculture County Summary Short Report

PULL DATE ranges from 7/1/2009 TO 6/30/2010

8/11/2010

<i>County</i>	<i>Prod Code</i>	<i>Total Samples</i>	<i>Samples in Violation</i>	<i>%</i>	<i>Test Violation Total</i>	<i>Total Volume (Gals)</i>	<i>Total in Violation</i>
	Total:	80	6	7.50	8	214,788.00	12,295
Washington	D	26	1	3.85	1	59,835.00	823
	E85	1	1	100.00	3	1,287.00	1,287
	G	87	10	11.49	12	333,078.00	23,986
	K	5	0	0.00	0	2,970.00	0
	Total:	119	12	10.08	16	397,170.00	26,096
Wayne	D	14	0	0.00	0	37,594.50	0
	G	28	2	7.14	3	121,834.20	1,323
	K	1	0	0.00	0	168.00	0
	Total:	43	2	4.65	3	159,596.70	1,323
Weakley	D	20	2	10.00	2	37,049.00	5,534
	G	32	0	0.00	0	101,205.00	0
	K	2	0	0.00	0	1,022.00	0
	Total:	54	2	3.70	2	139,276.00	5,534
White	D	9	0	0.00	0	45,649.00	0
	G	29	2	6.90	2	67,150.00	904
	K	2	0	0.00	0	833.00	0
	Total:	40	2	5.00	2	113,632.00	904
Williamson	BDB	2	2	100.00	2	1,898.00	1,898
	D	31	1	3.23	1	129,660.00	959

Tennessee Department of Agriculture County Summary Short Report

PULL DATE ranges from 7/1/2009 TO 6/30/2010

8/11/2010

<i>County</i>	<i>Prod Code</i>	<i>Total Samples</i>	<i>Samples in Violation</i>	<i>%</i>	<i>Test Violation Total</i>	<i>Total Volume (Gals)</i>	<i>Total in Violation</i>
	E85	1	0	0.00	0	853.00	0
	G	76	5	6.58	8	352,125.00	21,882
	K	14	1	7.14	1	12,546.00	363
	Total:	124	9	7.26	12	497,082.00	25,102
Wilson	BDB	3	1	33.33	1	5,226.00	1,762
	D	37	1	2.70	1	127,768.00	7,321
	E85	3	2	66.67	2	4,781.00	3,367
	G	85	5	5.88	8	392,683.00	26,260
	K	15	1	6.67	1	13,581.00	113
	Total:	143	10	6.99	13	544,039.00	38,823

Kerosene and Motor Fuel Enforcement Summary

July 1, 2009 – June 30, 2010

Civil Penalties:

Total Penalties Issued:	241
Amount Issued:	\$138,156.50
Total Collections:	\$117,103.50

Product Stop Sales:

Total Stop-Sales:	451
Total Gallons Stop-Sold:	1,900,949

Administrative Hearings

There was no administrative hearing held in FY '10.