

FAYETTE COUNTY SOLID WASTE PLANNING REGION

Solid Waste Needs Assessment

October 2014

As required by The Solid Waste Management Act (T.C.A. §68-211-811).



TENNESSEE DEPARTMENT OF ENVIRONMENT AND CONSERVATION
Division of Solid Waste Management, TDEC
William R. Snodgrass Tennessee Tower
312 Rosa L Parks Ave, 14th Floor
Nashville, TN 37243



Prepared by:

Josh Shumaker, Program Developer/Regional Solid Waste Coordinator

INTRODUCTION

In an effort to coordinate and plan for safe, efficient solid waste disposal in the state, the Tennessee General Assembly enacted several pieces of legislation, which are compiled in Title 68, Chapter 211 of the *Tennessee Code Annotated*. To comply with the requirements of this chapter, all local governments must engage in specified planning and organizational activities (See the Solid Waste Management Act of 1991, T.C.A. §§ 68-211-801 through 68-211-874).

Regional Solid Waste Management Planning

To begin implementation of the Solid Waste Management Act, counties were instructed to form solid waste regions (single or multi-county) and establish a solid waste board. Each region was required to formulate a 10-year plan for collection and disposal of solid waste in the area and submit this plan to the Tennessee Department of Environment and Conservation. Each municipal solid waste region must submit an annual progress report and 5-Year Plan Update (T.C.A. § 68-211-814). The plan, and any revised plan, submitted by each region must be consistent with the state solid waste plan and with all relevant state laws and regulations.

At a minimum, each plan must contain the following items:

- Demographic information and projections;
- Analysis of economic activity in the Region;
- Characterization of the waste stream;
- Projection of solid waste generation;
- Evaluation of the county and municipal waste collection systems;
- Evaluation of existing solid waste management facilities and capacities, and of any new or expanded facilities planned;
- Statement of solid waste management goals that are consistent with the state plan;
- Analysis of existing or potential waste flows within the region and between adjacent regions;
- Comparison of the projected volume of generated and imported waste with available and projected capacity to manage it, and identification of potential shortfalls in that capacity; and
- Any additional information the commissioner may require.

In order that the regional planning effort is implemented on a solid foundation of relevant and objective knowledge of local conditions, the Act requires the Development Districts to coordinate, conduct and maintain a Needs Assessment for each solid waste region. This Assessment shall be revised every five years.

SECTION 1:

DEMOGRAPHIC INFORMATION AND PROJECTION

Provide a table and chart showing the region's population during the last ten (10) years with a projection for the next five (5) years. Provide a breakdown by sub-table and sub-chart, or some similar method to detail all county and municipality populations. Considering the trends, discuss the effect on the solid waste infrastructure needs over the next five (5) years.

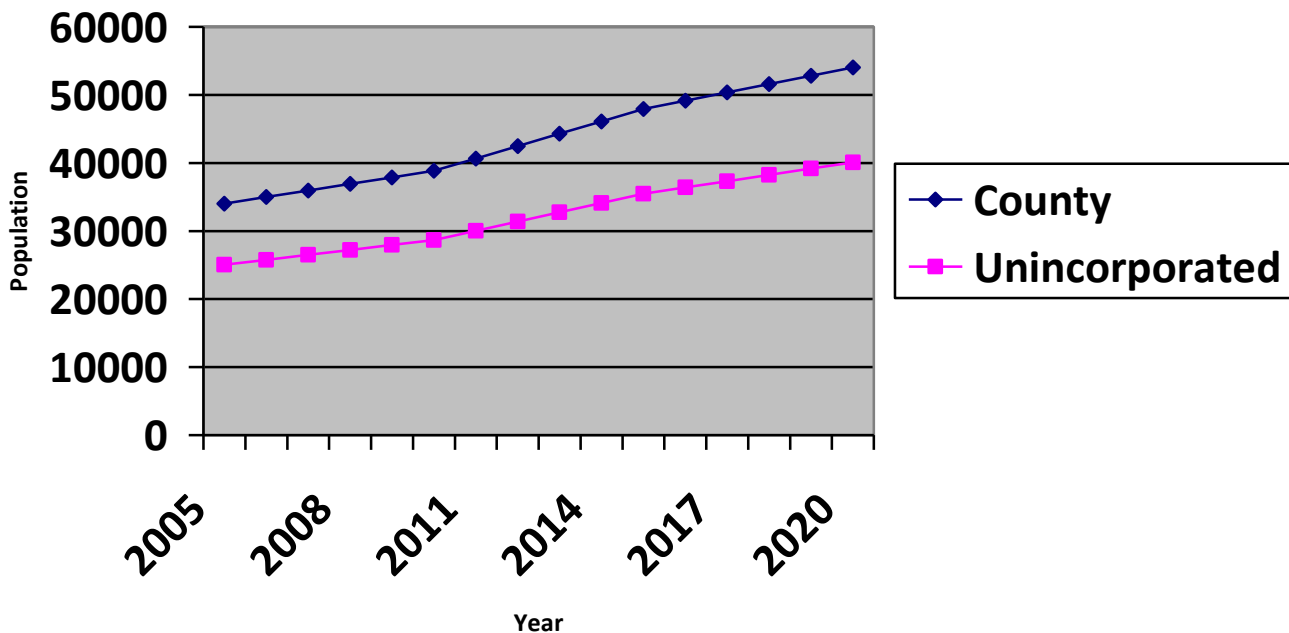
Population Trends in Fayette County

According to the UT Center for Business and Economic Research, Fayette County's 2014 population is projected to be 46,105. The 2020 population is projected to be 54,051, showing an increase of 17.2% from 2014. As shown in Table 1.1 below, projections for the next five years also reflect a consistent annual increase in population for all incorporated areas as well as the unincorporated rural section of the county.

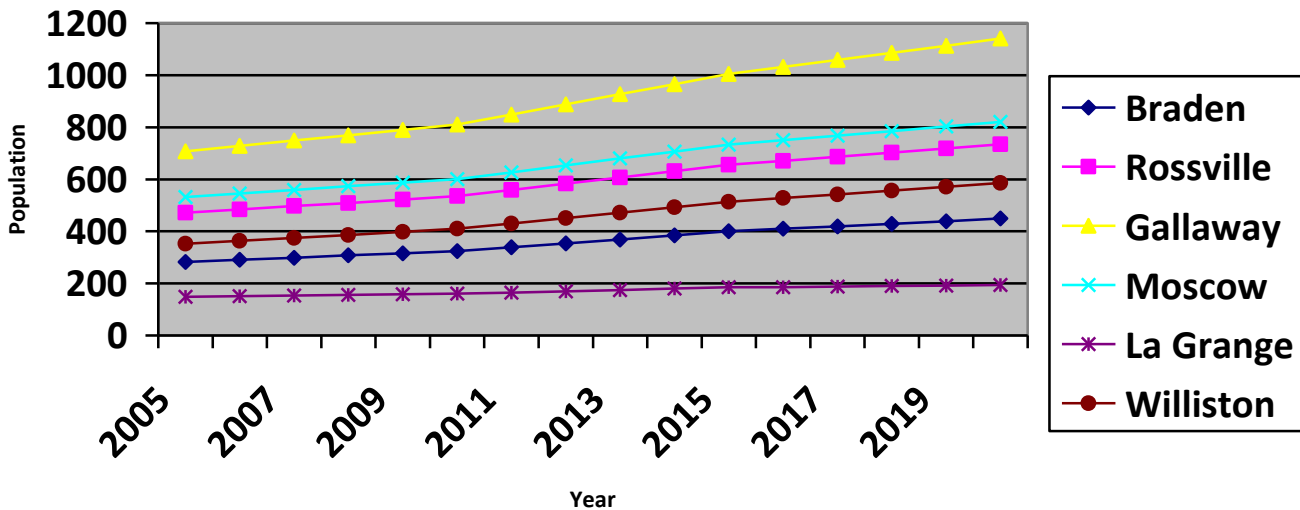
TABLE 1.1 Historic and Projected Population Trends (2005 thru 2020)

Year	County Population	Braden	Somerville	Rossville	Gallaway	Moscow	Oakland	La Grange	Piperton	Williston	Unincorporated
2005	34,023	283	2,875	472	708	532	2,538	149	1,084	352	25,030
2006	34,983	291	2,947	484	728	545	2,621	151	1,095	363	25,758
2007	35,949	299	3,019	497	749	559	2,704	153	1,107	375	26,487
2008	36,914	308	3,091	509	769	573	2,787	156	1,119	386	27,216
2009	37,880	316	3,163	522	790	587	2,870	158	1,131	398	27,945
2010	38,848	324	3,236	535	811	601	2,953	161	1,143	410	28,674
2011	40,658	339	3,379	559	849	627	3,101	165	1,173	430	30,036
2012	42,474	354	3,523	583	888	653	3,250	170	1,204	451	31,398
2013	44,289	369	3,667	607	927	680	3,398	175	1,234	472	32,760
2014	46,105	384	3,811	631	966	706	3,547	180	1,265	493	34,122
2015	47,925	400	3,955	656	1,005	733	3,696	185	1,296	514	35,485
2016	49,146	410	4,056	671	1,032	750	3,802	186	1,306	528	36,405
2017	50,371	419	4,158	687	1,059	768	3,909	188	1,316	542	37,325
2018	51,596	429	4,259	703	1,086	785	4,016	190	1,326	557	38,245
2019	52,822	439	4,361	719	1,113	803	4,123	192	1,336	571	39,165
2020	54,051	449	4,463	735	1,141	821	4,230	194	1,346	586	40,086

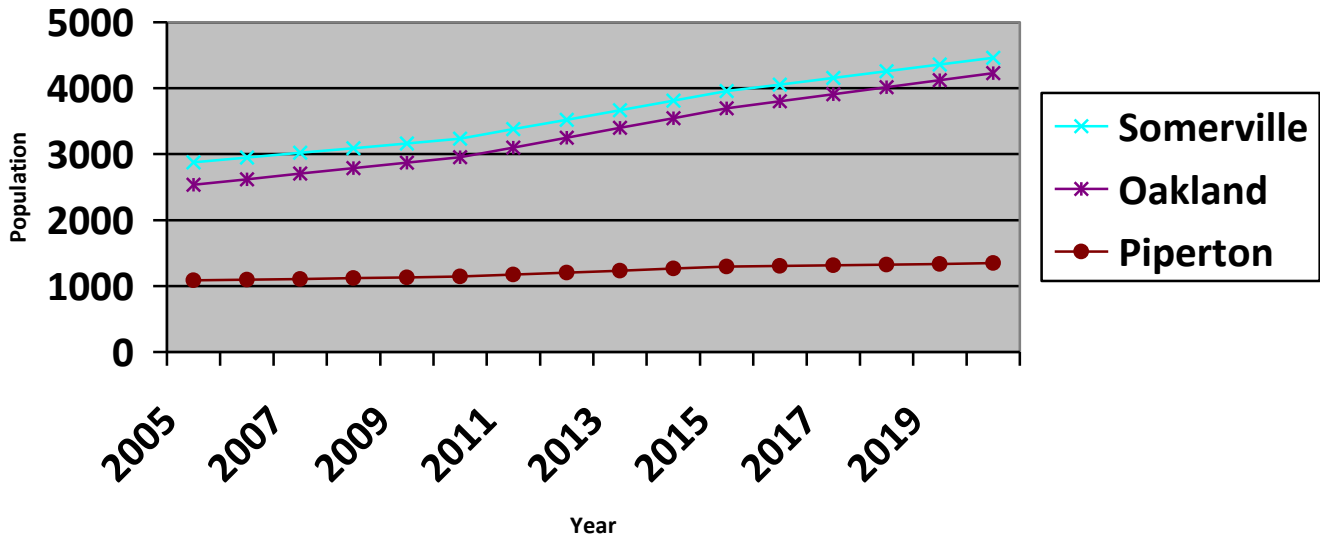
County Population - Overall and Unincorporated



County Population - Smaller Municipalities



County Population - Larger Municipalities



Sources: Historic data and projections are based on data from University of Tennessee - Center for Business and Economic Research.

According to 2010 U.S. Census Bureau statistics, 14.8% of Fayette County’s citizens are 65 years of age and older. Residents under 18 years of age contribute to 23.1% of the county’s population and 18 to 24 year-olds account for 6.7%. The largest age group, 45 to 64, make up 31.4% of the county’s population. The population is only slightly older in median age with Tennessee at 38 compared to Fayette County’s median age of 42. As the county’s population increases, the need for additional staff, infrastructure, and equipment is apparent. A growing workforce and residential population will increase demand on solid waste services.

Age Group	Fayette County	Tennessee
Under 18	23.1%	23.6%
18 to 24	6.7%	9.6%
25 to 44	23.9%	26.4%
45 to 64	31.4%	27%
65 and older	14.9%	13.4%

Fayette County Solid Waste Board has reviewed recent Annual Progress Reports and envisions the need to expand solid waste services. Leadership in the county executive and legislative branches expresses an interest in offering

recycling services beyond two existing recycling drop-off locations. Community leaders and residents are requesting these services in their respective jurisdiction. As state and federal agencies implore local governments to actively divert waste from its disposal streams, equipment will need to be provided to meet these continual demands. While current equipment needs are moderate in Fayette, future goals in recycling will require many tools to capture commodities.

Growing population is straining equipment and infrastructure. As the county attempts to increase participation among residents in recycling efforts, lack of funding is the primary obstacle to improving education and accessibility. Local efforts to add equipment and infrastructure will require more financial support from state and local sources. As shown in the population projections above, continual growth will fuel support from residents to incorporate accessible recycling as a part of current local services.

SECTION 2

ECONOMIC ACTIVITY WITHIN THE REGION

Provide a table and chart showing the region's economic profile for the county and its municipalities for the last ten (10) years with a projection for the next five (5) years. This can be accomplished by using the following economic indicators:

- *Taxable sales, property tax generation, and per capita income*
- *Evaluation by break down of each economic sector*
- *County or municipal budgeting information*
- *Other commonly accepted economic indicators*

Economic Profile of Fayette County

The state and county experienced a higher unemployment rate in recent years than the national average. From 2004 to 2013, the national average for unemployment was 6.89%. During the same time, the state and county unemployment rate average was higher at 7.38% and 8.55%, respectively. As with the national economy, the higher unemployment rate can be attributed to the Great Recession of 2009, however, the rate has dropped in the county since its peak of 11.1% in 2009.

The unemployment rate is presently 8% according to the August 2014 Labor Force Estimates from the TN Dep. of Labor and Workforce Development. The unemployment rate has decreased over the last year. Lower unemployment is expected to continue with the county experiencing new economic development and home sales at 442 per year (2013).

The 2011 per capita income for Fayette County was \$43,579 which is significantly higher than the state's average of \$36,567. The 2011 median household income is \$57,437 which is also higher than the state's median income of \$43,989. County property tax rate for 2013 was \$1.61.

The top ten county manufacturers are listed below. Employee numbers contribute significantly to the local economy. The percentage of employees who also reside in Fayette County is not available at this time.

TABLE 2.1 Fayette County Top 10 County Manufacturers, 2012

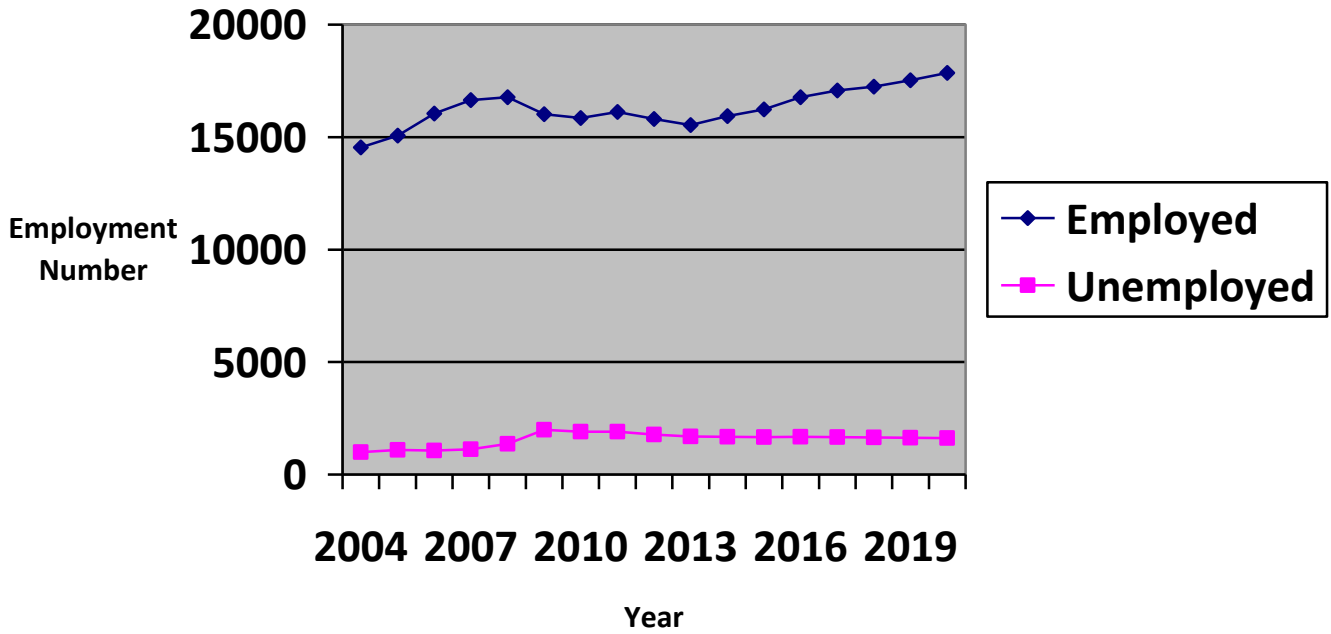
Manufacturer	Product	# Employed
Medegen Medical Products	Medical Supplies	416
Kellogg's	Food Processing	347
Memphis Contract Packaging, Inc.	Specialty Packaging and Products	250
AOC (Alpha Corporation)	Chemical Resins	240
Coilmaster Corporation	Heating/Air Coils	194
The Troxel Company	Steel Fabrication	165
Ring Container Technologies	Plastic Containers	120
Stabilit America Inc.	Fiberglass	103
Precision Engineering & Fabricating Industries	Laser and Coil Parts	65
Precision Coils Inc.	Heating/Air Coils	56

Source: Fayette County Chamber of Commerce, county industries, 2012

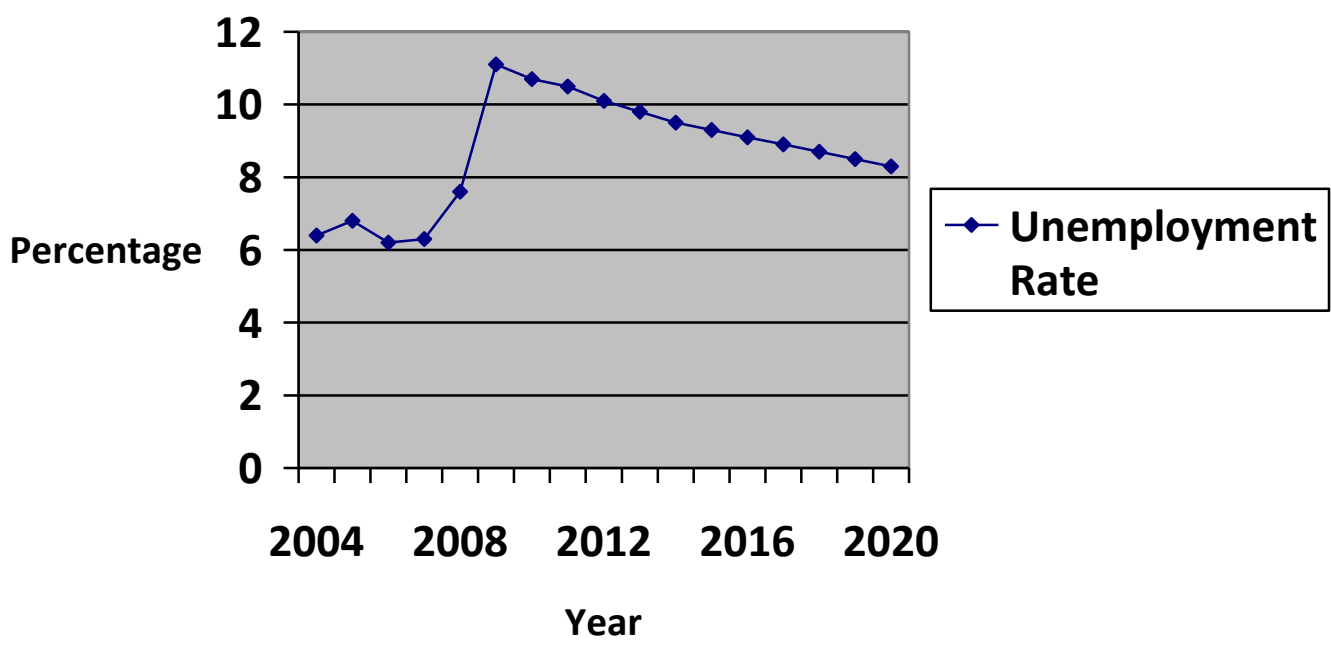
TABLE 2.2 Fayette County Historic and Projected Economic Indicators

Year	Labor Force Data				Per Capita Income	Total Retail Sales
	Total	Emp.	Unemp.	Rate(%)		
2004	15,530	14,540	990	6.4	\$29,745	\$143,407,691
2005	16,160	15,070	1,100	6.8	\$31,404	\$169,690,415
2006	17,120	16,050	1,070	6.2	\$33,324	\$186,800,344
2007	17,770	16,640	1,130	6.3	\$34,725	\$202,322,195
2008	18,150	16,780	1,370	7.6	\$38,263	\$238,996,665
2009	18,020	16,020	1,990	11.1	\$38,073	\$207,296,449
2010	17,760	15,850	1,910	10.7	\$40,135	\$239,975,414
2011	18,020	16,120	1,900	10.5	\$44,992	\$263,458,773
2012	17,570	15,800	1,770	10.1	\$48,271	\$284,916,197
2013	17,220	15,530	1,690	9.8	\$49,719	\$293,462,915
2014	17,600	15,928	1,672	9.5	\$51,211	\$302,269,340
2015	17,900	16,235	1,665	9.3	\$52,069	\$307,333,625
2016	18,450	16,771	1,679	9.1	\$53,110	\$313,478,054
2017	18,745	17,077	1,668	8.9	\$53,974	\$318,577,753
2018	18,885	17,242	1,642	8.7	\$54,377	\$320,956,432
2019	19,150	17,522	1,628	8.5	\$54,642	\$322,520,576
2020	19,475	17,858	1,616	8.3	\$55,569	\$327,992,128

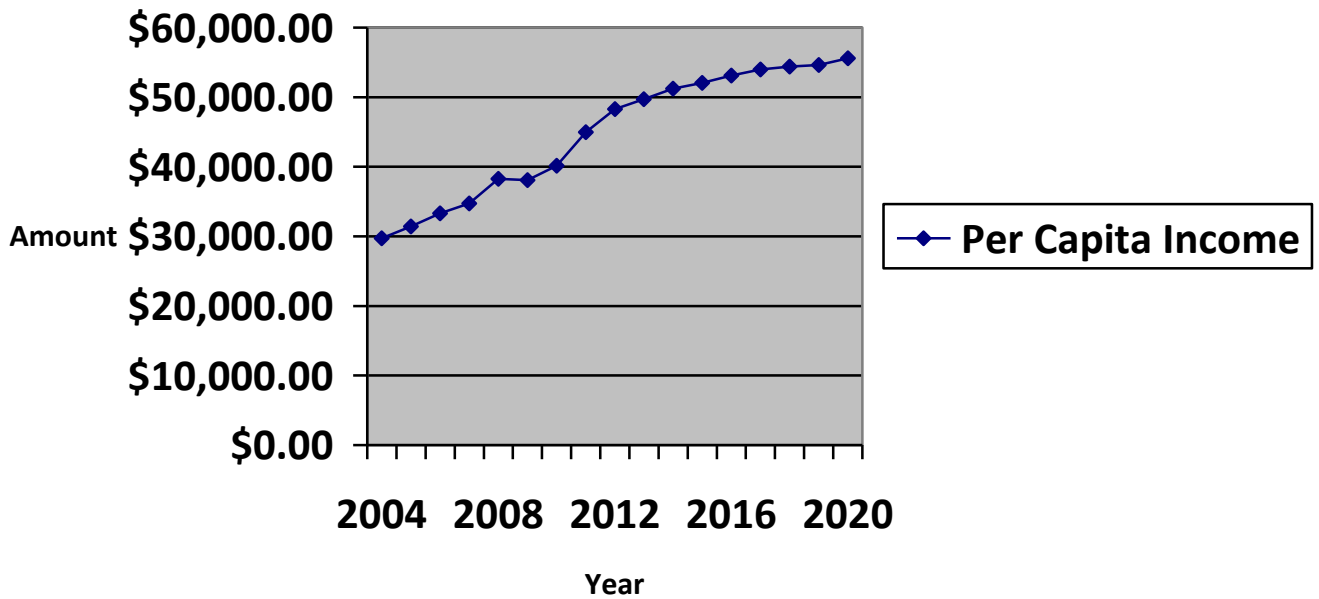
County Employment



County Unemployment Rate (%)



County Per Capita Income



Sources: Historic employment data is from the Tennessee Department of Labor and Workforce Development, per capita income data is from the TN Advisory Commission on Intergovernmental Relations and U. S. Bureau of Economic Analysis, and retail data is from the Tennessee Department of Revenue. All projections are completed by MAAG staff.

SECTION 3

SOLID WASTE STREAM CHARACTERIZATION

Elaborate on the region's solid waste stream. Compare the current waste stream with the trend anticipated over the next five (5) years and discuss how this new total will be handled. Include in this discussion how problem wastes like waste tires, used oil, latex paint, electronics and other problem wastes are currently handled and are projected to be handled during the next five (5) years. What other waste types generated in this region require special attention? Discuss disposal options and management of these waste streams as well as how these waste streams will be handled in the future. Include in this discussion how commercial and industrial wastes are managed. Also provide an analysis noting source and amounts of such wastes entering or leaving the region, noting the source and amounts of such wastes.

Current MSW Stream

Fayette County reported a total MSW stream of 26,541 tons according to the county's 2013 Annual Progress Report. There were 19,978 tons disposed of in Class I landfills and 6,563 tons diverted or recycled.

Residents contribute to the largest share of Fayette County's MSW. Residential waste makes up an estimated 60% of the total MSW. Commercial activities add 35%, institutional sources 3%, and industrial waste 2% to the total stream.

TABLE 3.1 Regional Solid Waste Stream Disposal for 2013 – 2018

Class I Disposal Site	Reported (in tons) (2013 APR)	Projected Year (in tons)					
	2013	2014	2015	2016	2017	2018	2019
MSW disposed in BFI North Shelby County Class I Landfill located in Shelby County	5,289	5,501	5,716	5,859	5,997	6,141	6,288
MSW disposed in BFI South Shelby County Class I Landfill located in Shelby County	3,409	3,545	3,683	3,775	3,866	3,959	4,054
MSW disposed in Buck Run Class I Landfill located in Walnut, MS	11,280	11,731	12,189	12,494	12,794	13,101	13,415
MSW disposed in Blaylock Brown Construction, Inc. Class III/IV Landfill located in Shelby County	6,631	6,896	7,165	7,344	7,520	7,700	7,885
MSW disposed in Fayette County Environmental Center Class III/IV Landfill located in Fayette County	13,145	13,671	14,204	14,559	14,908	15,266	15,632
Total Regional Waste Disposal	39,754	41,344	42,957	44,031	45,085	46,167	47,274

Source: 2013 Fayette County APR. Projections completed by MAAG staff.

TABLE 3.1 shows the solid waste totals for each landfill based on the 2013 APR and projected tons of waste for the next 6 years. According to projections, the highest annual population growth occurs between 2013 and 2014, and is projected at 4%. The lowest growth rate occurs between 2016-2017, 2017-2018, and 2018-2019 with annual growth occurring at 2.4%. Projections are determined by applying the annual population rate to the annual waste disposal rate during the same period.

The increase in solid waste disposal will drive few changes in the county's waste collection. Unless county-wide solid waste collection is provided, residents will continue to haul waste to the Fayette County Landfill. Presently, residents in municipal areas have access to curbside waste collection and this is not expected to change. The increasing amount of materials in the waste stream will incite wear on the department's equipment and infrastructure. Also, additional staff may be required to handle the increased amount of waste. Industrial waste only accounts for 2% of the solid waste stream due to manufacturers' strong attention to reuse and recycling efforts. Therefore, minimum waste generated from industrial sources.

The most significant issue facing solid waste collection is the disposal method which exists for residents in unincorporated Fayette County. The county does not provide collection for unincorporated parts. Within municipalities, cities and towns contract services with private providers. For residents outside of incorporated jurisdictions, waste has to be hauled to the Fayette County Landfill in Somerville. The situation prompts residents to use illegal methods for trash disposal. Illegal waste dumping and burning of garbage is a frequent, unnecessary means of waste disposal. County solid waste has not been able to address the problem entirely although county-wide collection would offer better convenience and help to alleviate illegal dumping and burning.

Problem waste is collected by Fayette County Solid Waste Department. Tires are collected at the county landfill and residents are the haulers. Batteries are collected at the landfill as well as automotive stores such as Auto Zone and O'Reilly. Paint and oil is collected at automotive stores as well as special events promoting this specific collection.

Regional Solid Waste Management

TABLE 3.2 describes how the region's total waste stream is currently managed and how it will be managed over the next 5 years.

TABLE 3.2 Waste Stream Management

Jurisdiction or Sector	Solid Waste Stream Collection	Solid Waste Disposal	Present Problem Waste Handling	Future Problem Waste Handling 2015-2020	Other Problem Waste Types
Fayette County	<p>County convenience center available to all residents of Fayette County; subscription service is available.</p> <p>Residential solid waste collection site accepts solid waste including waste tires and oil as well as recyclables.</p> <p>Local businesses are permitted to use the convenience center.</p>	<p>Fayette County Environmental Center Landfill located in Somerville serves as primary waste disposal facility for residents in unincorporated Fayette County.</p> <p>Commercial and industrial waste is handled through private collection services. Industries can also dispose waste at the Fayette County Environmental Center Landfill.</p>	<p>Waste tires: Waste tire contract Used oil: H & H Oil Automobile fluids: H & H Oil Latex paint: Collected Electronics: Collected</p>	<p>Waste tires: Waste tire contract Used oil: H & H Oil Used oil filters: H & H Oil Automobile fluids: H & H Oil Latex paint: Plans to collect Electronics: Plans to collect</p>	<p>HHW collected at environmental center and mobile collection events</p> <p>Statewide mobile collection site availability is limited. With increased accessibility, greater participation may follow. TDEC assisted with event last year and county is prepared to welcome its assistance again.</p>
Somerville	<p>County convenience center available to all residents of Fayette County; subscription service is available.</p> <p>Residential and business waste handled by private collection services.</p>	<p>Residential solid waste Waste Connections, Inc. handles curbside pickup – disposed of at Buck Run Landfill.</p> <p>Local businesses have curbside pickup or dumpster rental available</p>	<p>No collection available for recyclables – handled by county</p>	<p>Expected increase in population will result in greater demand for recycling services.</p>	<p>No collection available for special items, including used oil and HHW.</p>
Oakland	<p>County convenience center available to all residents of Fayette County; subscription service is available.</p> <p>Residential and business waste handled by private collection services.</p>	<p>Residential solid waste Republic, Inc. handles curbside pickup – disposed of at N. and S. Shelby landfills.</p> <p>Local businesses have curbside pickup or dumpster rental available</p>	<p>Oakland maintains recycling center accepting fiber, paper, plastic, and aluminum collection. No collection is available for special items, used oil, etc.</p>	<p>Expected increase in population will result in greater demand for recycling services.</p>	<p>No collection available for special items, including used oil and HHW.</p>
Piperton	<p>County convenience center available to all residents of Fayette County; subscription service is available.</p> <p>Residential and business waste handled by private collection services.</p>	<p>Residential solid waste Waste Connections, Inc. handles curbside pickup – disposed of at Buck Run Landfill.</p> <p>Local businesses have curbside pickup or dumpster rental available.</p>	<p>No collection available for recyclables – handled by county.</p>	<p>Expected increase in population will result in greater demand for recycling services.</p>	<p>No collection available for special items, including used oil and HHW.</p>

Source: Fayette County APR 2013.

Jurisdiction or Sector	Solid Waste Stream Collection	Solid Waste Disposal Options	Present Problem Waste Handling	Future Problem Waste Handling 2015-2020	Other Problem Waste Types
Rossville	County convenience center available to all residents of Fayette County; subscription service is available. Residential and business waste handled by private collection services.	Residential solid waste Waste Connections, Inc. handles curbside pickup – disposed of at Buck Run Landfill. Local businesses have curbside pickup or dumpster rental available.	No collection available for recyclables – handled by county.	Expected increase in population will result in greater demand for recycling services.	No collection available for special items, including used oil and HHW.
Moscow	County convenience center available to all residents of Fayette County; subscription service is available. Residential and business waste handled by private collection services.	Residential solid waste Waste Connections, Inc. handles curbside pickup – disposed of at Buck Run Landfill. Local businesses have curbside pickup or dumpster rental available.	No collection available for recyclables – handled by county.	Expected increase in population will result in greater demand for recycling services.	No collection available for special items, including used oil and HHW.
Grand Junction	County convenience center available to all residents of Fayette County; subscription service is available. Residential and business waste handled by private collection services.	Residential solid waste CNP Waste, Inc. handles curbside pickup – disposed of at Hardeman County Landfill. Local businesses have curbside pickup or dumpster rental available.	No collection available for recyclables – handled by county.	No problems anticipated – slight increase in population will not affect waste handling.	No collection available for special items, including used oil and HHW.
La Grange	County convenience center available to all residents of Fayette County; subscription service is available. Residential and business waste handled by private collection services.	Residential solid waste Waste Connections, Inc. handles curbside pickup – disposed of at Buck Run Landfill. Local businesses have curbside pickup or dumpster rental available.	No collection available for recyclables – handled by county.	Slight increase in population may prompt residents to request recycling services.	No collection available for special items, including used oil and HHW.
Galloway	County convenience center available to all residents of Fayette County; subscription service is available. Residential and business waste handled by private collection services.	Residential solid waste Republic Services, Inc. handles curbside pickup – disposed of at N. and S. Shelby landfills. Local businesses have curbside pickup or dumpster rental available.	No collection available for recyclables – handled by county.	Slight increase in population may prompt residents to request recycling services.	No collection available for special items, including used oil and HHW.
Business	County convenience center available as well as private haulers. Dumpster rental used for larger industries.	Contract with private haulers or transport items to county environmental center.	Recycling availability limited to two drop-off locations.	Special items not collected on site at private industry locations.	Industrial recycling products such as wood pallets are accepted at the environmental center.

Source: Fayette County APR 2013.

Note: Over next five years, no changes in solid waste collection or disposal are anticipated.

Fayette County Convenience Center accepts waste from residents and businesses, including special waste items. Residents and businesses in each locality contract with private waste collection services. No items outside of those listed above are disposed of or collected in the county.

Wastes Leaving the County

Most of the residential waste is exported out of the county. Landfills located outside of the county accepting this waste are BFI North Shelby Landfill located in North Shelby County, TN, BFI South Shelby County Landfill located in Memphis, TN, Blaylock, Brown Construction, Inc. Landfill located in Collierville, TN, and Buck Run Landfill located in Walnut, MS. The haulers are Blaylock, Brown Construction, Inc., Republic, and Waste Connections. A total of 26,609 tons of waste was exported out of the county in 2013.

Out-of-County Landfill	Amount (2013)(in tons)
North Shelby, TN	5,289
South Shelby, TN	3,409
Walnut, MS	11,280
Collierville, TN	6,631
Total	26,609

SECTION 4:

REGIONAL COLLECTION SYSTEMS

Describe in detail the waste collection system in the county and each municipality, including a narrative of the life cycle of solid waste from the moment it becomes waste (loses value) until it ceases to be a waste by becoming a useful product, residual landfill material or an emission to air or water. Label all major steps in this cycle noting all locations where wastes are collected, stored or processed along with the name of operators and transporters for these sites.

Fayette County's waste collection system is operated through the Fayette County Environmental Center. Fayette County Solid Waste is responsible for maintaining two convenience centers. One is considered a "super" convenience center, located in Somerville.

Fayette County

A tipping fee of \$40 per ton is charged for MSW delivered to the Fayette County Environmental Center. The fees are included into the Solid Waste Fund. Residents and businesses are charged this fee to drop off waste at the center.

Residents within the unincorporated sections of the county may carry their own solid waste to the landfill and pay a tipping fee. Residents also have the option of contracting with a private hauling service on an individual basis, which costs \$9 to \$19 per month.

Two convenience centers are located in Fayette County. One center is the Fayette County Environmental Center located in Somerville. The center accepts MSW and recyclables, including tires, used oil, batteries, and pallets. Hours of operation are 7 a.m. to 4:30 p.m. M to F and 8 a.m. to 4 p.m. on Saturday. Another center serves as a recycling drop-off center and is located in Oakland. The center accepts cardboard, paper, plastics, and aluminum.

Municipalities

All municipalities in Fayette County contract with private services for residential and business door-to-door solid waste collection. Pickup services are weekly. Haulers collect waste and transport it to varying landfills in the region. City personnel collect residential yard waste and transport it to the Fayette County Landfill. Table 4.1 lists the municipality, hauler, monthly cost, waste landfill, and participation from the city's public works department in waste collection.

Table 4.1 Municipal Solid Waste Disposal Locations, Haulers, and Collection Fees

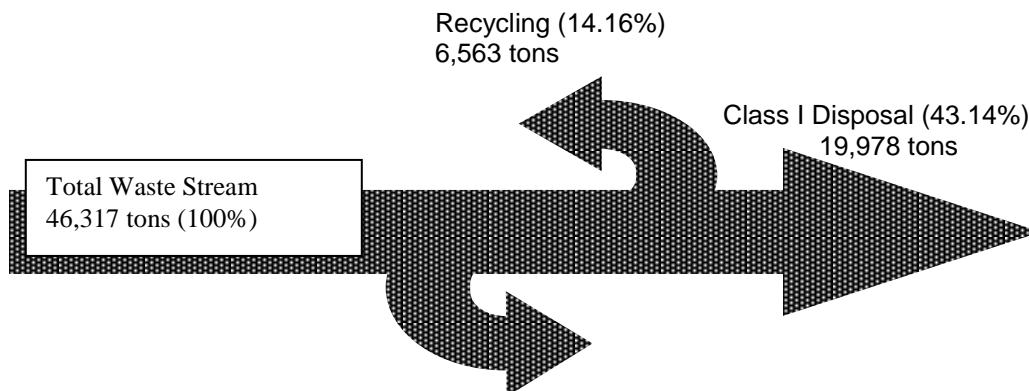
Municipality	Hauler	Cost	Destination	Public Works Participation
Somerville	Waste Connections, Inc.	\$18.10	Buck Run, Walnut, MS	Yard Waste Collection
Moscow	Waste Connections, Inc.	\$15.75	Buck Run, Walnut, MS	None
Oakland	Republic Services, Inc.	\$13.52	North & South Shelby, Shelby County, TN	None
La Grange	Waste Connections, Inc.	\$18.10	Buck Run, Walnut, MS	None
Piperton	Waste Connections, Inc.	\$17	Buck Run, Walnut, MS	None
Gallaway	Republic Services, Inc.	\$16.90	North & South Shelby, Shelby County, TN	None
Rossville	Waste Connections, Inc.	\$14.83	Buck Run, Walnut, MS	Collection & disposal of cardboard boxes
Grand Junction	CNP Waste, Inc.	\$8.75	Hardeman County, TN	Brush collection and disposal

Source: Municipalities and private waste collection services

C&D Debris is handled by Blaylock Brown Construction, Inc. in Collierville.

Flow Diagram of Fayette Total Annual Regional Waste Stream

The figures shown in the flow diagram below were taken from the 2013 Fayette County Solid Waste Annual Progress Report.



Class III/IV Disposal (42.7%)
19,776 tons

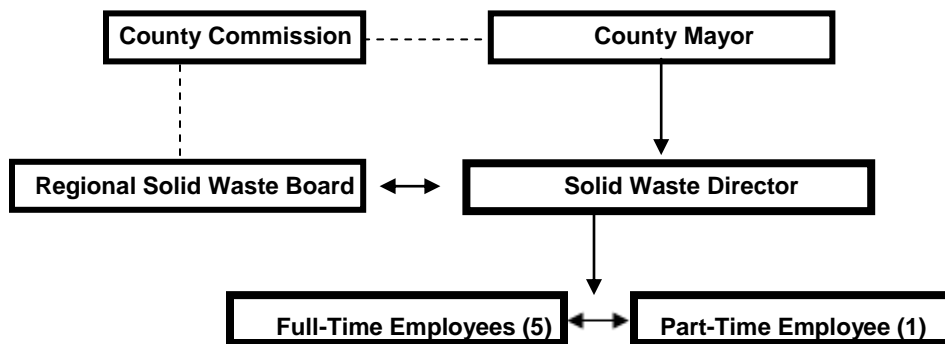
SECTION 5:

SOLID WASTE MANAGEMENT INFRASTRUCTURE

Provide organizational charts of each county and municipality's solid waste program and staff arrangement. Identify needed positions, facilities, and equipment that a fully integrated solid waste system would have to provide at a full level of service. Provide a scale county level map indicating location of all facilities including convenience centers, transfer stations, recycling centers, waste tire drop-off sites, used oil collection sites, paint recycling centers, all landfills, etc. Identify any short comings in service and note what might be needed to fill this need.

Fayette County

An organizational chart is provided below for operations of the Fayette County Solid Waste Department.



Current Solid Waste Infrastructure and Future Needs

Fayette County Solid Waste Department currently consists of seven staff members: one full-time director, five full-time employees and one part-time employee. The county solid waste board has eight total members featuring one chair and seven board members. The board continues to take an increasing interest in solid waste operations, especially in regards to recycling.

The creation of a Recycling Coordinator position would help to increase waste diversion and recycling in Fayette County. The Coordinator's roles and responsibilities would include public outreach and education to community groups and schools. The Coordinator would also help to find additional funding for local operations through public and private sources. Sufficient training in solid waste operations would need to occur in order to properly prepare the selected candidate for this position. At this time, limited time and resources at the local level prevent Fayette County Solid Waste from hiring for this position.

An additional recycling center would help to increase the intake of recyclables in the county. Currently, a property for the proposed recycling center has been identified at the southern portion of the county between Rossville and Piperton. The communities are experiencing rising population with each community projected to grow by approximately 200 people by 2020. The center would accept paper, fiber, plastics, and aluminum.

For 2013, Fayette County generated revenues in the amount of \$508,700. A total of \$328,700 was collected from solid waste disposal fees and \$133,986 was collected from recycling sales. Expenses were \$895,250.

TABLE 5.1 lists desired items for future expansion of solid waste operations in Fayette County. The costs are estimates which may vary depending on the item and its market demand.

TABLE 5.1 Future Recycling, Waste Diversion, & Waste Needs

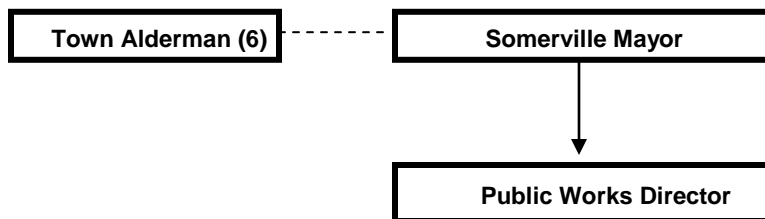
Need	Estimated Cost	Potential Revenue Source
Recycling Containers (2 locations)	\$42,000	General Fund/Grants
Recycling Truck	\$50,000	General Fund/Grants
Recycle Conveyors	\$10,000	General Fund/Grants
Semi-Trailers	\$2,000	General Fund/Grants
Site Development	\$20,000	General Fund/Grants
Baler	\$75,000	General Fund/Grants
Recycling Building	\$150,000	General Fund/Grants
Forklifts (2)	\$40,000	General Fund/Grants
Solid Waste Staff (3)(annually)	\$150,000	General Fund
Total	\$539,000	

Source: Fayette County Solid Waste

Municipalities

Somerville

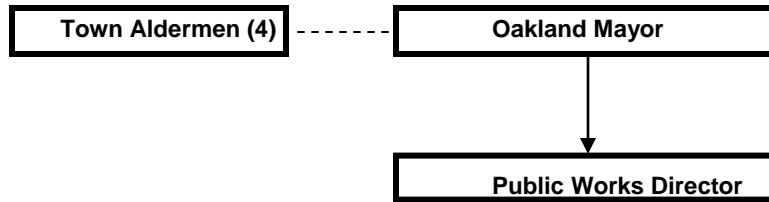
Waste Connections, Inc. provides curbside collection 1,308 customers and waste pickup occurs once per week. Residents pay \$18.10 per month for collection services. Commercial service costs vary. A recycling drop-off center is located at the Fayette County Environmental Center however the town does not provide recycling services. An organizational chart for the Town of Somerville is below:



Although Somerville does not provide municipal solid waste service, four public works employees handle yard waste collection. Equipment used in waste collection is a backhoe, saw, and city truck. Yard waste is hauled to the Fayette County Environmental Center.

Oakland

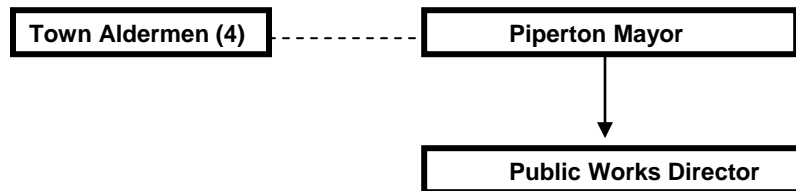
Republic Services, Inc. provides curbside collection for 2,959 customers and waste pickup occurs once per week. Residents pay \$13.52 per month for collection services. Commercial service costs vary. A recycling drop-off location is located in Oakland and accepts fiber, paper, aluminum, and plastic. The Town does not directly handle recycling services and is instead managed by county solid waste. An organizational chart for the Town of Oakland is below.



No public employees or equipment is designated to solid waste operations.

Piperton

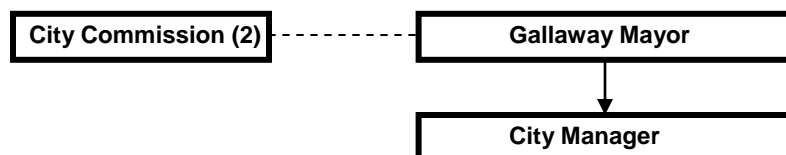
Waste Connections, Inc. provides curbside collection for 530 customers and waste pickup occurs once per week. Residents pay \$17 per month for collection services. Commercial service costs vary. The town does not have a recycling drop-off location and does not offer this service. An organizational chart for the Town of Piperton is below.



No public employees or equipment is designated to solid waste operations.

Gallaway

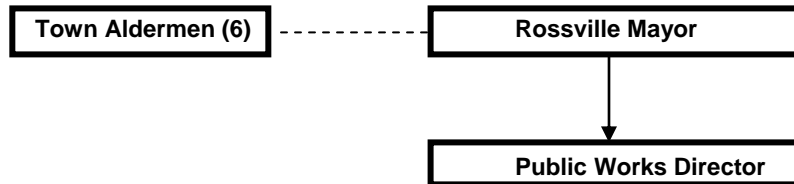
Republic Services, Inc. provides curbside collection for 143 customers and waste pickup occurs once per week. Residents pay \$16.90 per month for collection services. Commercial service costs vary. The city does not have a recycling drop-off location and does not offer this service. An organizational chart for the City of Gallaway is below.



No public employees or equipment is designated to solid waste operations.

Rossville

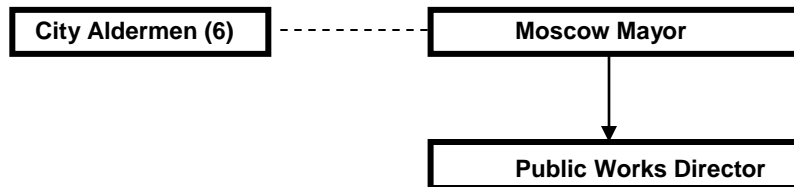
Waste Connections, Inc. provides curbside collection for 350 customers and waste pickup occurs once per week. Residents pay \$14.80 per month for collection services. Commercial services vary. The town does not have a recycling drop-off location and does not offer this service. An organizational chart for the Town of Rossville is below.



Public Works Department removes cardboard boxes from curbsides for residents moving into the town. Fiber is either transported to town-owned dumpsters or recycled depending on the item's condition.

Moscow

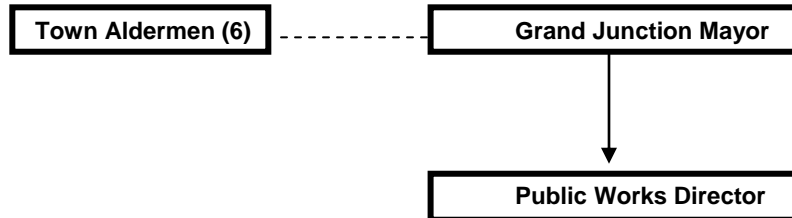
Waste Connections, Inc. provides curbside collection for 217 customers and waste pickup occurs once per week. Residents pay \$15.75 per month for collection services. Commercial service costs vary. Recycling in the city consists of a fiber and paper drop-off bin at city hall. An organizational chart for the City of Moscow is below.



No public employees or equipment is dedicated to solid waste operations.

Grand Junction

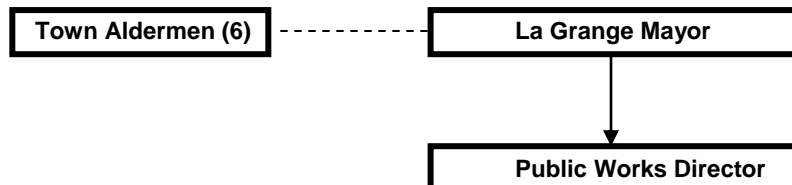
CNP Waste, Inc. provides curbside collection for 320 customers and waste pickup occurs once per week. Residents pay \$8.75 per month for collection services. Although the town lies in both Hardeman and Fayette counties, a majority of Grand Junction's population resides in Hardeman County. Commercial service costs vary. The town does not have a recycling drop-off location and does not offer this service. An organizational chart for the Town of Grand Junction is below.



No public employees or equipment is dedicated to solid waste operations.

La Grange

Waste Connections, Inc. provides curbside collection for 63 customers and waste pickup occurs once per week. Residents pay \$14.44 per month for collection services. Commercial service costs vary. The town does not have a recycling drop-off location and does not offer this service. An organizational chart for the Town of La Grange is below.



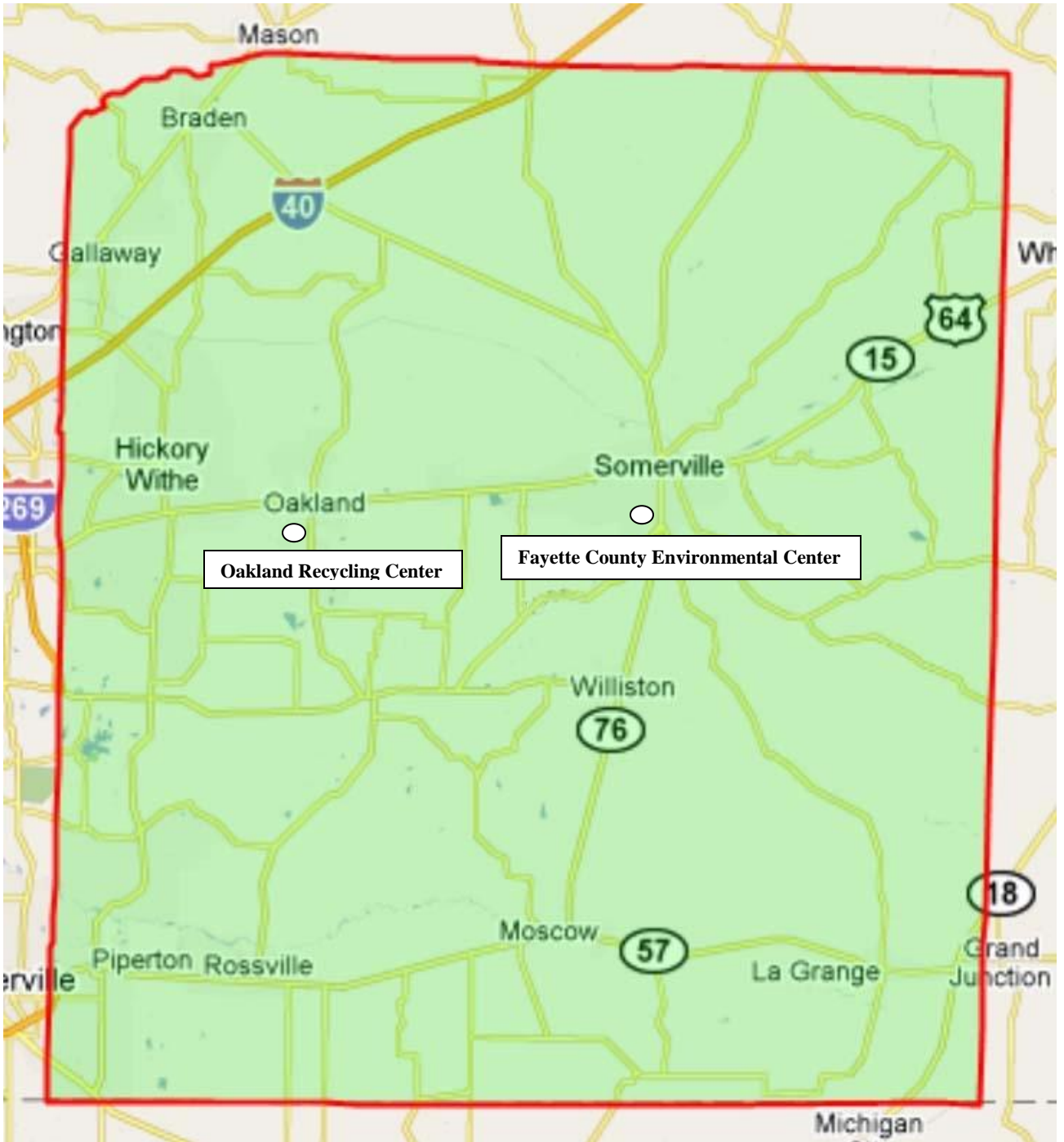
No public employees or equipment is dedicated to solid waste operations.

The **City of Williston** and the **City of Braden** do not support or contract with waste collection services. Residents contract directly with private collection services and no public employees or equipment are used in solid waste operations.

Locations of Solid Waste Facilities

The convenience center located at Fayette County (recycling center?) in Somerville is the only convenience center in the county. Recycling drop-off locations are available in Somerville and Oakland. A map is provided below which identifies the location of the landfill and recycling centers.

Map 5.1 Fayette County Landfill and Recycling Centers



Source: Fayette County Solid Waste

SECTION 6:

PUBLIC PARTICIPATION

Describe current attitudes of the region and its citizens towards recycling, waste diversion, and waste disposal in general. Where recycling is provided, discuss participation within the region. Indicate current and ongoing education measures to curb apathy or negative attitude towards waste reduction. Are additional measures needed to change citizen's behaviors? If so, what specific behaviors need to be targeted and by what means?

Current Attitudes Concerning Recycling, Waste Diversion, and Waste Disposal

Due to an influx of residents, the growing population in Fayette County has elicited discussions on recycling, waste diversion, and waste disposal. New residents in municipalities have asked for convenient recycling which can be easily accessed from their respective homes and work places. As a result, county solid waste continues to add equipment and establish centers to collect recyclable materials. In unincorporated areas, many residents recognize the value of door-to-door waste collection however it would certainly require additional revenue to pay for the service and residents repel any type of tax increase.

In recent years, a willingness to communicate both opportunities and challenges has allowed Fayette County Solid Waste to increase focus on recycling and waste diversion while also improving waste disposal methods. The county's solid waste department contributes information, especially on budgetary items, to mayor and commission members upon request. Solid Waste Director, Charles Traylor, maintains consistent communication with board members, providing information and receiving feedback on all facets of solid waste operations. The director manages a transparent department and responds to inquiries from board members, local officials, and the general public as requested. Communication is handled either through email, phone calls, or public notices, as needed.

As the county's population grows, demand for recycling services has increased, but challenges remain. Limited accessibility to recycling drop-off locations remains an obstacle to enhancing the service. Another limitation is the county's inability to inform and educate residents concerning recycling services. To address these obstacles, the solid waste department actively searches for funding opportunities to supply new equipment including more recycling center locations. As previously mentioned, the department also seeks funding to support a Recycling Coordinator position. Education is key to motivating residents to participate and a coordinator would help to advance recycling in the county. Communication is also needed through public meetings and direct mailings.

Education Measures

The Litter Grant is managed by county solid waste and funds all education measures in Fayette County. The table below illustrates the programs that were conducted in 2013.

TABLE 6.1 Public Education and Information Activities

Program Name	Sponsor	Effectiveness	Program Type	Target Group	# Served/Purpose
Fayette Cares	Fayette Cares	Positive	Public Access, Community Outreach	Adults/Children/Media/Civic/Other	500 – 1,000; Education initiative related to food drive and benefit for low-income families.
Relay for Life	Fayette County Cancer Society	Positive	Public Access, Community Outreach	Adults/Business/Government/Children/Media/Civic	1,001 – 5,000; Support from recycling used to raise funds for cancer research.
Hogmania	City of Somerville	Positive	Public Access, Community Outreach	Adult/Business/Government/Children/Media/Civic	1,001 – 5,000; Recycling offered to support funding for various projects.
Fayette County Environmental Club	Fayette Academy	Positive	Public Access, Community Outreach	Adult/Business/School/Children	1,001 – 5,000; Education offered to support county-wide recycling.
Fayette Ware High Recycling	Fayette Ware High School	Positive	Public Access, Community Outreach	Children	200; Recyclables collected from classrooms and school facilities by students

Source: Fayette County Solid Waste

More information about recycling and waste diversion needs to be provided to the public. Activities from the local schools would help to encourage students and families to participate in recycling. The Recycling Coordinator would be involved in presenting information at the schools as well as businesses, civic organizations, and churches. Schools are a major focus for upcoming outreach and education efforts but unfortunately, without additional personnel, these activities have fallen short.

SECTION 7

REGIONAL SOLID WASTE REDUCTION GOAL

The Solid Waste Management Act of 1991 requires all regions to reduce the amount of waste going into Class I landfills by 25%. Amendments to the Act allow for consideration of economic growth, and a “qualitative” method in which the reduction rate is compared on a yearly basis with the amount of Class I disposal. Provide a table showing the reduction rate by each of these goal calculation methodologies. Discuss how the region made the goal by each methodology or why they did not. If the region did not meet the 25% waste reduction goal, what steps or infrastructure improvements should be taken to attain the goal and to sustain this goal into the future.

TABLE 7.1 Measurement of Regional Waste Reduction Goal

County	Waste Reduction Goal Calculation Method		
	Population Ratio	Economic-Population Ratio	Qualitative - Real Time
Fayette County	-18%	-7%	57%
25% Waste Reduction Goal Achieved	No	No	Yes

Source: TDEC, Division of Solid Waste Management, Division of Solid Waste Assistance Program - 2013.

Variables Affecting Regional Waste Reduction Efforts

Fayette County met the 25% waste reduction standard in 2013 using the real time diversion rate of 57%. The goal was reached through the availability of recycling services and waste diversion efforts by the solid waste department. Under the Population Ratio and Economic-Population Ratio categories, the county reached -18% and -7%, respectively. Recent population growth in Fayette County contributes to limited waste diversion. As recycling provides the greatest opportunity to divert waste, new residents may not participate due to limited familiarity with the local recycling program. As the county seeks to improve upon the population ratio and economic-population ratio, further improvements will need to be made in collection and waste reduction processes in order to meet the waste reduction goals.

The county has an active recycling program with centers accepting commodities in Somerville and Oakland but also receives recycled materials from private sources. There are 100 smaller drop-off locations in the county which receive commodities and are a part of the regular collection system. These drop-off locations are situated at businesses and schools. County solid waste does not provide transportation services for these materials; only accepts materials at the county recycling center.

There are many challenges that exist to improving recycling within the county. One challenge is the lack of funding available to purchase recycling equipment. As the economic recovery is slowly occurring, the limited ability to raise funding

from the local government is another obstacle to expanding recycling services. Lastly, the market demand for recycling commodities has dropped in recent months which has impeded county operations and lowered recycling sales.

Future Regional Waste Reduction Program

Solid waste operations continues to seek new and creative ways to improve waste reduction in the county. Support exists among local officials to increase recycling and waste diversion. However, any improvement will rely on the availability of funding for future investments in infrastructure and resources. Several of these needs include:

1. A Recycling Coordinator would help to educate residents and businesses on how to appropriately collect and dispose of recyclable items.
2. A larger conveyor belt would improve sorting capabilities and storage of plastics and aluminum.
3. The addition of collection containers would increase access to recycling services for residents and businesses.
4. As population grows, labor demand will increase and the solid waste department will need to add staff.

SECTION 8:

SOLID WASTE DISPOSAL CAPACITY

Provide a chart indicating current collection and disposal capacity by facility site and the maximum capacity the current infrastructure can handle at maximum through put. Provide this for both Class I and Class III/IV disposal and recycled materials. Identify and discuss any potential shortfalls in materials management capacity whether these are at the collection or processor level.

TABLE 8.1 10-Year Regional Disposal Assurance in Fayette County in 2013

Site Name(s)	Annual Tons Disposed by Fayette County*	Solid Waste Permit #	Current Disposal (daily throughput from Fayette County)	Projected Life of Facility
Fayette County Environmental Center located in Somerville	13,145	DML - 240000080	53 tons per day	25+ years
Blaylock Brown Construction, Inc.	6,631	DML – 790000050	27 tons per day	20+ years
BFI North Shelby Landfill	5,289	SNL – 790000224	21 tons per day	130 years
BFI South Shelby Landfill	3,409	SNL – 790000135	14 tons per day	30 years
Buck Run Walnut, MS	11,280	SW - 0700010433	45 tons per day	13 years

Source: 2013 Fayette County Annual Progress Report, regional landfills

*Note: Annual tonnage disposed includes municipalities and businesses

County solid waste staff is concerned with the amount of tons being generated from Fayette County as reported by the private hauling companies. The haulers are reporting figures which do not match county figures. There could be many explanations for this situation, however, one possible scenario is that private haulers are coupling waste from neighboring counties and including it as a part of Fayette County’s waste collection. The situation would inaccurately account for Fayette County’s waste stream as it is reported to various regional landfills.

Provide a chart or other graphical representation showing public and private collection service provider area coverage within the county and municipalities. Include provider's name, area of service, frequency of collection, yearly tons collected, and the type of service provided.

TABLE 8.2 Private Collection Service in Fayette County in 2013

Service Provider	Service Area*	Frequency of Service (Weekly, Bi-weekly, on call, etc.)	Estimated Average Annual Tons Collected*	Type Service (Curbside, Convenience Center, Green Box)
Waste Connections, Inc.	Somerville, La Grange, Moscow, Piperton, Rossville, Unincorporated Fayette County Local business subscription	Weekly	14,689	Residential curbside Local business subscription
Republic Services, Inc.	Oakland, Gallaway, Unincorporated Fayette County Local business subscription	Weekly	5,289	Residential curbside Local business subscription
Blaylock, Brown Construction, Inc.	Fayette County	Weekly	6,631	Industrial/Commercial
Total			26,609	

Source: Private waste collection services

*Several private haulers operate waste collection service for residents and businesses in Fayette County. Information on customers and areas served and tonnages collected is not available and considered confidential by the private sector.

**Waste collection in Grand Junction is handled by CNP Waste, Inc. Collection is not reported separately between Fayette County and Hardeman County.

SECTION 9:

UNMET FINANCIAL NEEDS

Complete the chart below and discuss unmet financial needs to maintain current level of service. Provide a cost summary for current year expenditures and projected increased costs for unmet needs.

TABLE 9.1 Expenditures and Revenues for Fayette County, 2012 - 2013

EXPENDITURES			
Description	Present Need \$/year	Unmet Needs \$/year	Total Needs (Present + Unmet) \$/year
Salary and Benefits			
Transportation/hauling			
Collection and Disposal Systems			
Equipment			
Sites			
Convenience Center	\$261,725	-	\$261,725
Transfer Station			
Recycling Center			
MRF			
Landfills			
Site			
Operation	\$615,380	-	\$615,380
Closure			
Post Closure Care	\$11,000	-	\$11,000
Administration (supplies, communication costs, etc.)			
Education	\$7,145	-	\$7,145
Public			
Continuing Ed.			
Capital Projects			
REVENUES			
Host agreement fee			
Tipping fees			
Property taxes			
Sales tax			
Surcharges			
Disposal Fees	\$328,700	-	\$328,700
Collection charges			
Industrial or Commercial charges			
Residential charges			
Convenience Centers charges			
Transfer Station charges			
Sale of Methane Gas			
Other sources: (Grants, bonds, interest, sales, etc.)	\$180,000	-	\$180,000

Source: 2013 Fayette County APR

According to Fayette County's 2013 Annual Progress Report, the county's total expenditures were \$895,250. Maintenance and operation of the Convenience Center and Landfill are the two primary costs for the county with public education included as a minor part of the overall expenditures.

Revenues generated during the same period were \$508,700. The revenue sources are disposal fees at the Fayette County Environmental Center and recycling sales. In 2013, the difference between the expenditures and revenues was \$386,550. Fayette County General Fund pays this difference each year.

TABLE 9.2 Expenditures and Revenues for Municipalities, 2012 - 2013

Municipality	Expenditures	Revenues	Monthly Fee
Somerville	\$511,763	\$470,131	\$18.10
Moscow	\$39,876	\$39,680	\$15.75
Oakland	303,365	\$420,754	\$13.52
La Grange	\$10,773	\$11,209	\$14.44
Piperton	\$120,000	\$125,000	\$17.00
Rossville	\$47,000	\$47,000	\$14.83
Grand Junction	\$12,055	\$12,055	\$8.75
Galloway	\$49,300	\$49,300	\$16.90

Source: 2012-13 Municipal solid waste budgets; hauler is hired by city to provide waste collection service to residents and private entities. Municipality includes monthly fees on residential and company utility bill.

SECTION 10:

CURRENT REVENUE SOURCES

Identify all current revenue sources by county and municipality that are used for materials and solid waste management. Project future revenue needs from these categories and discuss how this need will be met in the future. Use Chart 9 as an example to present data.

Fayette County

The Fayette County Solid Waste budget is a part of the county's General Fund. The General Fund serves as the county's main operating fund. County government operates through this account with exceptions otherwise agreed to through another account. Expenditures and revenues are accounted for through the Solid Waste Management Budget.

Revenues from the General Fund includes: Property taxes, local option sales taxes, other local taxes, grants and contributions not restricted for specific programs, unrestricted investment earnings, and miscellaneous. Tipping fees and recycling sales are allocated to the Solid Waste Fund 116.

The 2013 Fayette County property tax rate was \$1.60. The local option sales tax is 2.25%. An annual wheel tax is charged at \$75 per vehicle and is allocated to the school system fund.

Economic conditions are expected to improve in Fayette County, leading to lower unemployment and higher tax revenue. The county continues to experience increases in population and per capita income. The economic impact of population growth and income has significant benefits for future economic development. As more waste is collected at the Fayette County Landfill, tipping revenues? will increase as well.

While the economic picture is improving, solid waste operations remains limited in offering recycling and waste diversion services. The county will continue to pursue grants through TDEC and other sources to fund recycling equipment and education. Specifically, the county seeks containers, vehicles, bailers, and staff to expand recycling services.

Municipalities

The cities and towns in Fayette County collect waste disposal fees which vary in cost. Private collection services handle waste collection and disposal for the municipalities and unincorporated areas.

Residents pay a monthly fee for waste collection which ranges from \$9 to \$19. Additional revenues that are overages in solid waste disposal fees are available in some cities and those monies are absorbed into the general fund of each locality. Since waste collection is handled by private services, localities have

limited participation in these processes. No issues exist at this time which would require localities to intervene in waste collection or disposal.

Fayette County Solid Waste facilitates recycling and waste diversion within the county and no city or town revenues contribute to these processes. Individual municipalities are not responsible for collecting recyclables due to limited to no staffing and equipment however some have indicated their willingness to partner in recycling initiatives. Oakland has a recycling drop-off location and both Rossville and Piperton residents and leaders show interest in creating a recycling center as well. City revenues may contribute to starting future recycling centers.

SECTION 11:

REGIONAL SOLID WASTE PLAN

Discuss this region’s plan for managing its solid waste management system during the next five (5) years. Identify any deficiencies and suggest recommendations to eliminate deficiencies and provide sustainability of the system for the next five (5) years. Show how the region’s plan supports the Statewide Solid Waste Management Plan.

The table below summarizes Fayette County’s existing programs, future programs, and the Tennessee Solid Waste Management Plan.

TABLE 11.1 Regional Solid Waste Management Plan

Solid Waste Program	Existing Solid Waste Programs	Future Solid Waste Programs	Tennessee Statewide Plan
Residential Solid Waste Collection	Individual cities provide residential curbside collection of solid waste. Fayette County residents can take MSW and other items directly to landfill located at Fayette County Environmental Center. Private haulers provide collection/disposal for local residents and businesses.	Expand residential curbside collection to unincorporated areas of Fayette County. Residential and commercial disposal fees will continue for MSW to Fayette County Environmental Center. Private hauling services will continue for residents and businesses.	County to provide CCC’s for residents according to population or service area, maintain required design and operational standards.
Recycling	Residents can take paper, plastics, cardboard, and cans to the Fayette County Environmental Center in Somerville and drop-off center in Oakland.	Solid Waste Department looks to provide an additional recycling drop-off location between Piperton and Rossville.	County to provide at least one (1) drop-off site for collection of residential recyclable materials.
Waste Reduction	For 2013, Fayette County met reduction goal by the real time method with 57% diversion.	Solid Waste Department will exceed the 25% Waste Reduction Goal.	Region to achieve 25% Waste Reduction Goal.
Problem Waste Management	Fayette County collects waste tires at the county’s Environmental Center. Automobile fluids and batteries are collected by private entities.	Recycling Center will be added to accept automobile fluids, batteries, and waste tires. The County will host a HHW collection event in 2015.	County to provide at least one (1) site to accept automobile fluids, batteries, and waste tires.
Public Education and Information	Fayette County provides educational and outreach to the public through the Litter Grant.	A Recycling Coordinator will be hired for education and outreach to schools, churches, neighborhood groups, government, and businesses.	Region to develop and implement solid waste management action plan for adults and children.
Disposal	Fayette County contracts disposal services with Buck Run Landfill in Walnut MS and BFI North and South Shelby Landfills in Memphis TN.	FCSW will continue to contract disposal services with landfills in Walnut and Memphis. Reporting figures will be consistently requested and monitored by FCSW to ensure accurate reporting.	Region to assure 10-year disposal capacity.
Planning	The Fayette County Solid Waste Board meets at least once per year to discuss solid waste issues. Reporting requirements have been updated.	Meetings will occur as needed to address various solid waste issues. Reporting requirements will be updated by the expected due date.	Region to provide Annual Progress Reports, Needs Assessments, and other reporting requirements as needed.

Source: 2013 Fayette County APR, Fayette County Solid Waste

The following list contains recommended actions to eliminate deficiencies and provide sustainability in Fayette County's solid waste operations:

- Curbside collection is expanded to the unincorporated parts of the county,
- A new recycling drop-off center is provided in southwest county,
- Partnerships are created between cities and county solid waste to expand recycling services,
- Fees are collected as needed to pay for landfill operational costs,
- Recycling centers are equipped to accept automobile fluids, batteries, and waste tires,
- Household hazardous waste collection events are scheduled,
- A recycling coordinator is hired,
- Education and outreach is provided through aforementioned coordinator,
- County contracts with most efficient, best quality disposal service-provider,
- Solid waste board meets on at least quarterly basis to discuss and decide upon pertinent issues, and
- Due diligence is taken to communicate recent activities and concerns with TDEC, related entities

As the county seeks new ways to increase recycling and waste diversion, the aforementioned list is only recommended practices. The list of actions are not guaranteed to accomplish either an increase in recycling or reduction of waste from landfills. However, one major step forward to impact both areas would be to hire a Recycling Coordinator. Education and outreach are crucial to achieving results in waste diversion and recycling; a Coordinator would provide both to residents and businesses in Fayette County.

Sources:

U.S. Census Bureau (<http://factfinder.census.gov/faces/nav/jsf/pages/index.xhtml>)
- 4600 Silver Hill Road Washington, DC 20233

U.S. Department of Commerce, Bureau of Economic Analysis - Per Capita Income (<http://www.bea.gov/>) - 1441 L Street NW, Washington, DC 20005

Tennessee Department of Labor and Workforce Development - Labor Force Estimates (<https://www.tn.gov/workforce/article/labor-force-estimates>) - 220 French Landing Drive
Nashville, Tennessee 37243

Tennessee Advisory Commission on Intergovernmental Relations - Fayette County Profile (http://www.state.tn.us/tacir/County_Profile/fayette_profile.htm) - 226 Capitol Boulevard Building Suite 508, Nashville, TN 37243

University of Tennessee Center for Business and Economic Research – Population Projections for the State of Tennessee, 2010-2030 (June 2009) - Erin Middleton & Matthew Murray - 716 Stokely Management Center, 916 Volunteer Boulevard, Knoxville, Tennessee 37996-0570

Fayette County Chamber of Commerce - Largest Companies by Employment, May 2012 120 W Court Square #101, Somerville, TN 38068

Tennessee Department of Revenue - Retail Sales 2012 (<https://www.tn.gov/revenue/article/revenue-retail-sales-by-calendar-year-month>)
- 500 Deaderick Street Nashville, TN 37242

Tennessee Department of Environment and Conservation, Division of Solid Waste Assistance Program – Compliance Formulas for Annual Progress Report 2013 - William R. Snodgrass Tennessee Tower 312 Rosa L Parks Ave, 14th Floor Nashville, TN 37243

Fayette County Solid Waste - 2013 Fayette County Annual Progress Report - Charles Traylor, Fayette County Solid Waste 11675 Hwy 76 South Somerville, TN 38068; Josh Shumaker, Memphis Area Association of Governments 8289 Cordova Road Suite 103 Cordova, TN 38016

Charles Traylor, Fayette County Solid Waste Director - Interview - 11675 Hwy 76 South Somerville, TN 38068

Fayette County TN Government - Fayette County Budget Document 2012-13 - (<http://www.fayettetn.us/CountyFinancials/Budgets/2012-2013Budget.pdf>) - Mayor's Office, 13095 N. Main St. (P.O. Box 218) Somerville, TN 38068

City and Town Solid Waste Funds, 2012-2013 – Various - Town of Somerville,
City of Moscow, Town of Oakland, City of La Grange, City of Piperton, Town of
Rossville, City of Grand Junction, City of Gallway