

2015

**Moore County
Solid Waste District
Needs Assessment**

Prepared by:
South Central Tennessee Development District

101 Sam Watkins Boulevard Mount Pleasant, Tennessee 38474

As required by The Solid Waste Management Act of 1991 (T.C.A. 68-211-801 through 68-211-874).

For the

Tennessee Department of Environment and Conservation
Division of Solid Waste Management, TDEC
William R. Snodgrass Tennessee Tower
312 Rosa L. Parks Ave. 14th Floor
Nashville, Tennessee 37243

Introduction

The Solid Waste Management Act of 1991 requires that local governments comprehensively plan to manage their solid waste through modern, integrated, efficient systems. In order to assure that such planning is carried out on the solid foundation of relevant and objective knowledge of local conditions, the Act requires that the staff of the Development District coordinate, conduct and maintain a Needs Assessment for each municipal solid waste planning region. This assessment shall be revised every five years [T.C.A. 68-211-811].

The categories of information required are:

- *Demographic information & projections;*
- *An analysis of economic activity within the region;*
- *Characterization of the waste stream;*
- *Solid Waste Collection System*
- *Analysis of Existing or Potential Solid Waste Flows within the Region and Between Adjacent Regions*
- *Analyze Attitude of Region Towards Waste Management in General and Specify Needed Changes and/or Educational Measures*
- *Evaluation of the Waste Reduction Systems for Counties & Municipalities in Region*
- *Collection / Disposal Capacity and Projected Life of Solid Waste Sites*
- *Unmet Financial Needs and Cost Summary*
- *Compare revenue sources for the Region's Current Solid Waste Programs with Projected future Demands. Identify Any Potential Shortfalls in that Capacity*

Please provide the following information as the core foundations of the region's needs. The Needs Assessment is an attempt to outline the obstacles, difficulties, and needs unique to the region's handling and ideal disposal of its solid waste flow. You are encouraged to expound on the following items and provide additional information as warranted. There is no required format, only that the requested information is researched and answered thoroughly, with the improvement of the region in mind.

Item #1

DEMOGRAPHIC INFORMATION AND PROJECTION

Provide a table and chart showing the region’s population during the last ten (10) years with a projection for the next five (5) years. Provide a breakdown by sub-table and sub-chart, or some similar method to detail all county and municipality populations. Considering the trends, discuss the effect on the solid waste infrastructure needs over the next five (5) years.

Population Trends in MOORE County

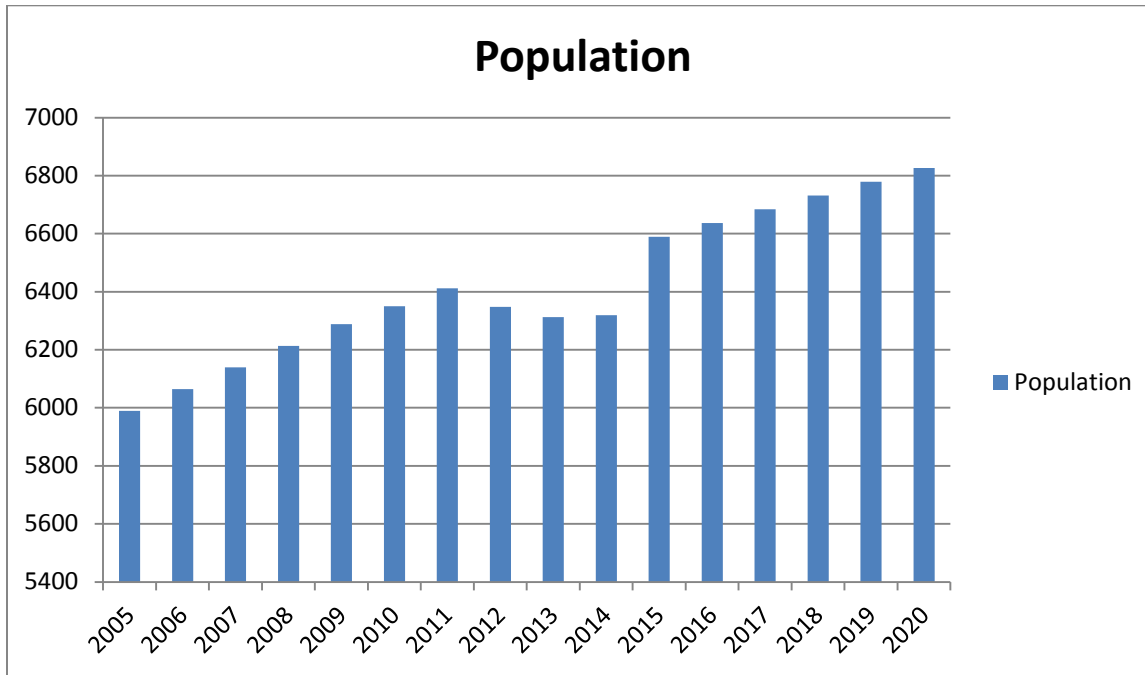
According to the U. S. Census Bureau, Moore County’s annual population in 2005 was 5,856 and in 2014, it was 6,319 showing an increase of 7.3 %. As shown in Table 1.1 below, projections for the next five years also reflect a considerable increase in population. Moore County forms a consolidated metropolitan city/county government.

TABLE 1.1 Historic and Projected Population Trends (2005 thru 2020)

Year	Metropolitan Lynchburg	Moore County
2005	5990	5595
2006	6064	5648
2007	6139	5701
2008	6213	5754
2009	6288	5807
2010	6350	5860
2011	6412	5914
2012	6348	5968
2013	6313	6023
2014	6319	6077
2015	6589	6131
2016	6637	6186
2017	6684	6141
2018	6732	6296
2019	6779	6351
2020	6827	6406

Sources: US Census Bureau, Population Projections for The State of Tennessee, 2010-2030.

Chart 1.1 Historic and Projected Population Trends (2005-2020)



Sources: Historic and Projected Population Trends, U.S. Census Bureau Population Estimate, www.city-data.com/county/Moore County-TN.

These population trends for Metropolitan Moore County including the City of Lynchburg, has experienced considerable growth in the last five years.

Moore County is the location of the Jack Daniel Distillery, who's famous Tennessee Whiskey, is marketed world- wide in one hundred seventy countries. Every drop of Jack Daniel whiskey sold anywhere in the world is made in Moore County. Moore County is a dry county.

The solid waste infrastructure will remain stable as the Jack Daniel Distillery is the principal employer in Moore County.

The recycle program managed by Jack Daniel's Distillery is still proactive in capturing all streams of recyclables.

Item #2

Provide a table and chart showing the region's economic profile for all county and municipalities for the last ten (10) years with a projection for the next five (5) years. This can be accomplished by using the following economic indicators:

- **Taxable sales, property tax generation, and per capita income**
- **Evaluation by break down of each economic sector**
- **County or municipal budgeting information**
- **Other commonly accepted economic indicators**
- **Economic Profile of Moore County**

The average household income for Moore County residents is estimated to be \$52,448.00 for the year 2014, while the average household income for the United States in 2014 was \$52,961.00. The household income will expect to increase with the expansion of the Jack Daniel Distillery in Lynchburg. The per capita income for Moore County in 2014 is \$25,082.00. The growth rate for Moore County in 2010-2014 was .15% while 2014-2019 is anticipated to be .10%. There is a 2.95% growth rate increase anticipated for 2014-2019.

The current unemployment rate for December 2014 in Moore County is 5.7% according to US Bureau of Labor Statistics unemployment rate report. The U.S. unemployment rate for 2014 is 5.8% while Tennessee is 7.1%. It is projected that the unemployment rate will slightly decrease.

Lynchburg is a city in the South Central Region of the U. S. State of Tennessee that is governed by a consolidated city-county government unit whose boundaries coincide with those of Moore County. Lynchburg is centrally nestled around Tullahoma, Winchester, Fayetteville, Lewisburg and Shelbyville. The population of Lynchburg is estimated to be 6,402 residents.

Industry in Moore County

Moore County's close proximity to Interstate 24 makes it an ideal location for industrial and manufacturing facilities. Tennessee Technology Centers are within easy driving distance

Lynchburg is known primarily as the home to the Jack Daniel's Distillery, makers of the famous Tennessee whiskey. Jack Daniel's Distillery employs over 400 employees. It is in the process of expanding. Middle Tennessee State University is located in Murfreesboro 40 miles away. In Moore County residents can also procure manufacturing jobs in Tullahoma, Manchester, Winchester, Shelbyville, Fayetteville, and Lewisburg. Large employers such as AEDC in Tullahoma, Tyson and Calsonic in Shelbyville, and the Nissan facilities in Franklin County provides job opportunities for Moore County residents as well.

Table 2.1 Moore County Historic and Projected Economic Indicators

Year	Employed	Unemployed	Unemployment Rate	Per Capita Income	Total Retail Sales	Property Tax Rate
2004	4,075	110	2.8	22,030	9,101,098	2.44
2005	3,400	100	2.9	22,039	13,197,175	2.44
2006	2,990	140	4.4	23,166	17,931,036	2.44
2007	2,980	140	4.5	25,324	20,101,266	2.02
2008	2,980	150	4.7	26,701	15,052,034	2.13
2009	3,010	130	4.2	27,823	16,893,306	2.16
2010	2,834	283	9.1	29,657	17,426,928	2.22
2011	2,790	290	9.5	30,969	16,842,673	2.33
2012	2,780	300	9.6	31,514	17,712,959	2.43
2013	3,030	270	8.3	34,213	18,017,557	2.43
2014	3,130	250	7.4	37,932	20,047,838	2.43
2015	3,080	230	7.0	38,775	22,262,498	2.43
2016	3,090	220	6.5	38,775	22,262,498	2.43
2017	3,100	210	6.0	38,775	22,262,498	2.43
2018	3,110	200	5.5	38,775	22,262,498	2.43
2019	3,120	190	5.5	38,775	22,262,498	2.43
2020	3,130	185	5.0	38,775	22,262,498	2.43

Sources: MITDA Community Data Profile, Tennessee Department of Revenue, Bureau of Economic Analysis, South Central Tennessee Development District, and Metropolitan Moore County Executive.

The above table suggests that while employed has increased since 2004 and the unemployed decreased the unemployment rate has been high since 2004 of 2.8. Jack Daniel Distillery employs a lot of Moore County residents but most employees do not live in Moore County.

Table 2.2 Moore County Unemployment Rate 2004-2020

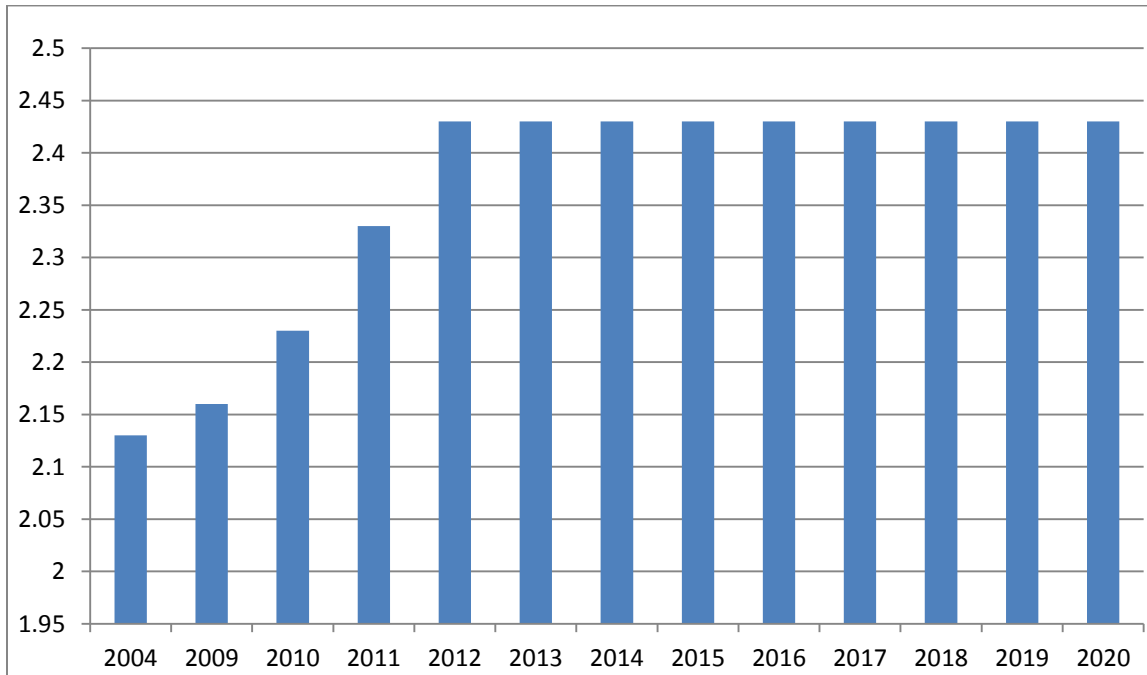
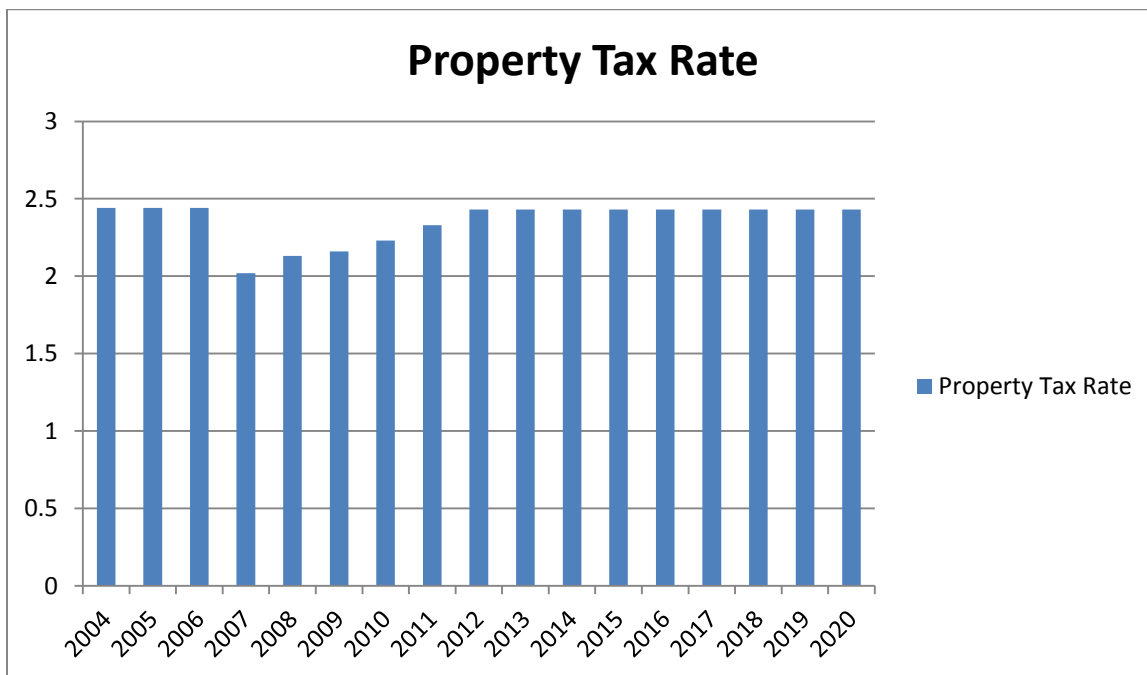


Table 2.3 Moore County Property Tax Rate



Item #3

Elaborate on the entire region’s solid waste stream. Compare today’s waste stream with anticipated waste stream over the next five (5) years. How will the total waste stream be handled in the next five (5) years? Include in this discussion how problem wastes like waste tires, used oil, latex paint, electronics and other problem wastes are currently handled and are projected to be handled in the next five (5) years. What other waste types generated in this region require special attention? Discuss disposal options and management of these waste streams as well as how these waste streams will be handled in the future. Include in this discussion how commercial or industrial wastes are managed. Also provide an analysis noting source and amounts of any wastes entering or leaving out of the region.

Solid Waste Stream Characterization

In the most recent Moore County Solid Waste Annual Progress Report in 2014, the total disposal tonnage for Moore County reported is 2,975 tons to Middle Point Landfill in Walter Hill, Tennessee, 60 tons to Cedar Ridge Landfill in Lewisburg, Tennessee according to solid waste origin reports submitting to the Tennessee Department of Environment and Conservation (TDEC).

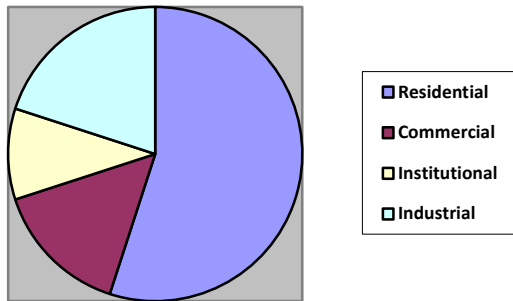
Currently all waste collected by Moore County Solid Waste Department includes the county and the city collections. Reported disposal tonnages have been calculated to estimate solid waste generated from the residential and commercial sectors in Moore County.

The County’s solid waste disposal fees are handled by the ISWA committee set up with the purpose of monitoring this waste.

Table: 3.1

Sector	Percentage of Moore County Total
Residential	55%
Commercial	15%
Institutional	10%
Industrial	20%

Graph 3.1 Percentage of Moore County Total for 2014



Sources: 2014 Annual Progress Report for counties (2014 landfill origin by county)

Solid Waste is projected to increase in Moore County due to population increasing and manufacturing in Moore County increasing.

There is only one convenience center located on Highway 129 one mile west of Lynchburg at 748 Booneville Hwy. At the convenience center paper, cardboard, metal, glass, batteries and automotive fluids are collected. Tires are also collected at this center. A total of 26,804 tons were recycled from this center.

In 2014 the total tons of garbage going into the landfill increased only by 22 tons.

Industry recycling continues to grow as Jack Daniel's Distillery responded to the Tennessee Recycling Report showing a total of 26,507 tons recycled in 2014.

In Moore County, landfilled material goes to the Transfer Station in Lincoln County and then shipped to Middle Point Landfill in Walter Hill, Tennessee.

Commercial and industrial waste will continue to be collected and transported to the appropriate collection facility for disposal by private haulers. The County does not provide collection for industries; industries contract with private haulers such as Allied Waste Management for their solid waste collection. Some commercial and industrial recyclables are collected and transported to the recycle center by Moore County Solid Waste.

The recycling drop off is located at 748 Booneville Highway (Hwy 129W), Lynchburg, Tennessee 37352. Items included are plastics (1-7), cardboard, paper, cans (aluminum and metal), TV's and computers and VCR's and cell phones. There is a number to call on the website for more information.

Recycling totes are located at Moore County schools for students to contribute to the recycling effort and to learn the importance of recycling.

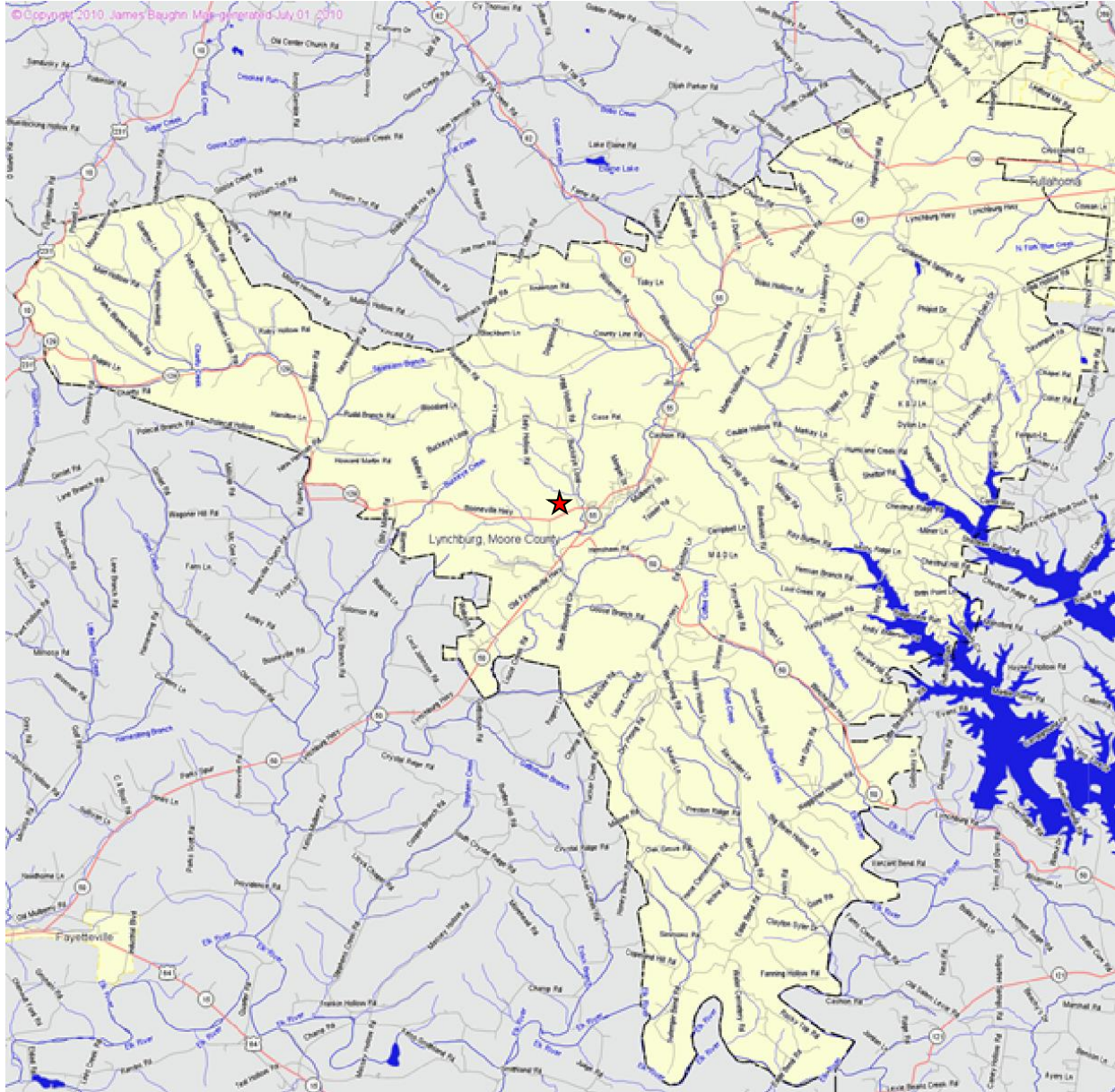
The Solid Waste Director continues to be a value added position that has increased the Convenience Center viability and has expanded the recycling efforts of Moore County.

Funding continues to be the major obstacle in providing services to Moore County residents. Equipment, staffing, and funds to launch a second convenience center has been a major challenge to improve the Solid Waste system.

Moore still has plans to construct loading docks at the current and proposed convenience centers to permit trailers to be loaded with recyclables. Glass is still a market that requires special attention for recycling improvements.

MOORE COUNTY SOLID WASTE FACILITY

748 BOONEVILLE HIGHWAY, LYNCHBURG, TN



Item #4

Describe in detail the waste collection system of the region and every county and municipality. Provide a narrative of the life cycle of solid waste from the moment it becomes waste (loses value) until it ceases to be a waste by becoming a useful product, residual landfill material or an emission to air or water. Label all major steps in this cycle noting all locations where wastes are collected, stored or processed along with the name of operators and transporters for these sites.

Convenience Center

Moore County has one combination convenience center and solid waste collection center for its residents. The center is staffed and operated by Moore County Solid Waste. The metropolitan government of Moore County/Lynchburg operates three solid waste collection trucks to service residential customers. The trucks collect approximately five to six truckloads of solid waste per week. Moore County does not provide collection for industries; industries contract with private haulers such as Allied Waste and Waste Management for their solid waste collection. Moore County collected less than one ton of Household Hazardous Waste in conjunction with Tennessee Department of Environment and Conservation HHW event in 2014.

The hours of operation of the convenience center is Monday and Tuesday 6:30 AM – 10:30 AM and 2:00 PM to 6:00 PM, Wednesday the center is closed, Thursday-Friday 8:00 AM to 2:00 PM, Saturday 8:00 AM to 4:00 PM, and 1:00 PM to 5:00 PM, and on Sunday 1:00 PM to 4:00 PM. The convenience collects municipal solid waste, glass, cardboard, scrap metal, batteries, and used oil. In addition, containers collecting single stream recyclables are located at each center. Single stream recyclable items in Moore County include tin, aluminum, plastic numbers 1 through 7, paper, antifreeze, e-waste and batteries. In 2012 anti-freeze, e-waste and batteries area accepted.

The majority of the waste collected at the convenience center and within Lynchburg/Moore County is disposed of at Lincoln County Transfer Station and then hauled to Middle Point Landfill.

Joining the ISWA in 2012 changed the collection processes. In 2014, 2,975 tons of solid waste was disposed of at Middle Point Landfill. Moore County has a population of 6,319 for 2014. The estimated per capita rate is .47 tons per person per year.

Tonnage reports for Municipal Solid Waste disposal and recycled goods were provided by Moore County. According to those reports, 2975 tons of MSW were collected at the convenience center for the period January 1, 2014 to December 31, 2014.

Yard Waste

Moore County does not currently collect or dispose of yard wastes generated by its urban or rural residents.

Household Hazardous Waste, Tires, Antifreeze, Used Oil, and White Goods

There is not an annual Household Hazardous Waste (HHW) Event held in Moore County. HHW is collected daily at Moore County Solid Waste Department. Since 2004 HHW event has been held every other year. Approximately .44 tons of HHW were collected at the last event according to the 2014 Annual Progress Report. Paint, cleaners, pesticides, automotive fluids, pool chemicals and lawn and garden chemicals are examples of household generated hazardous wastes accepted. The event is typically held the Saturday before Earth Day every other year. The event is held in conjunction with Tennessee Department of Environment and Conservation (TDEC).

Tires, paint, antifreeze, and used oil are accepted year-long at the convenience center and tire center during normal business hours. White goods are accepted at the convenience center during business hours.

The metro government of Lynchburg/Moore County provides curbside collection of municipal solid waste and recyclables to its residential population and commercial entities.

Recyclables are collected in Lynchburg at the county convenience center. There are bins/totes located at various schools around the county for recyclable collection as well. An individual effort by residents to recycle also occurs although it is not an organized effort.

The entire County has door to door trash pick- up. The city pays \$12 per month and the county pays \$14 per month.

To determine the number of convenience centers required for a county, according to Tennessee Regulations 1200-1-7-.10. The minimum level of solid waste collection services for a county shall be determined using the following:

(a) Household Collection- A county shall be deemed to have met minimum level of service if at least ninety (90%) of all residents to have access to household collection (Signed confirmation by the County Mayor).

(b) Convenience Centers – Each County must have at least one convenience center unless a higher level of service is provided.

To determine the number of convenience centers for a count, the service area of a county must first be calculated. The service area can be calculated using square miles or population.

According to State of Tennessee calculations, Moore County is required to have one (1) convenience center. Since Moore County has one (1) convenience center, it is in compliance.

Item #5

Provide organizational charts of each county and municipality's solid waste program and staff arrangement. Identify needed positions, facilities, and equipment that a fully integrated solid waste system would have to provide at a full level of service. Provide a scale county level map indicating location of all facilities including convenience centers, transfer stations, recycling centers, waste tire drop-off sites, used oil collection sites, paint recycling centers, all landfills, etc. Identify any short comings in service and note what might be needed to fill this need.

Current Solid Waste Staff and Infrastructure

Moore County Solid Waste Director/Recycling Coordinator
Sloan Stewart
Lynchburg, Tennessee

Moore County Solid Waste Committee
Larry Moorehead
Larry Hatfield
Claude Eady
Chris Bateman
Joe Milsaps
Connie Taylor

Rolling stock replacement will still be limited to dump trucks, fork trucks, and tractor with roll off bins. Current equipment at the recycle center is in good condition. It will only need maintenance.

Manpower requirements are stable with unforeseen additions or subtractions other than normal attrition replacement.

Moore County's Solid Waste Department is composed of six employees. There are three truck drivers for the collection of residential waste Monday-Friday. The average pick up is five to seven truckloads to the Cedar Ridge landfill weekly. Two employees operate the only convenience center. One of the employees drives a pick-up truck and collects roadside trash. The convenience center is located at 748 Booneville Highway, Lynchburg, TN.

Moore County usually generates 60 tons per week.

Waste Authority (ISWA), a part 9 Authority, in part to implement the solid waste plan for the three-county Interlocal Region and to help satisfy the twenty-five percent 25% reduction as quoted by HOUSE ENGINEERING LLC's Interlocal Solid Waste Region Plan in 2013, Nashville, Tennessee.

Moore County has been operating as a single county municipal solid waste planning region in accordance with their respective TDEC-approved Solid Waste Plans. Moore determined that they no longer wished to remain as single county regions. Moore and Bedford County decided to join the multi-county regions set forth in Tennessee Code Annotated 68-211-813(a)(4) and to join the Interlocal Solid Waste Region. Moore and Bedford County dissolved their respective single county regions and joined with Franklin, Giles and Lincoln Counties in the newly reconfigured five-county Interlocal Solid Waste Region in April of 1992.

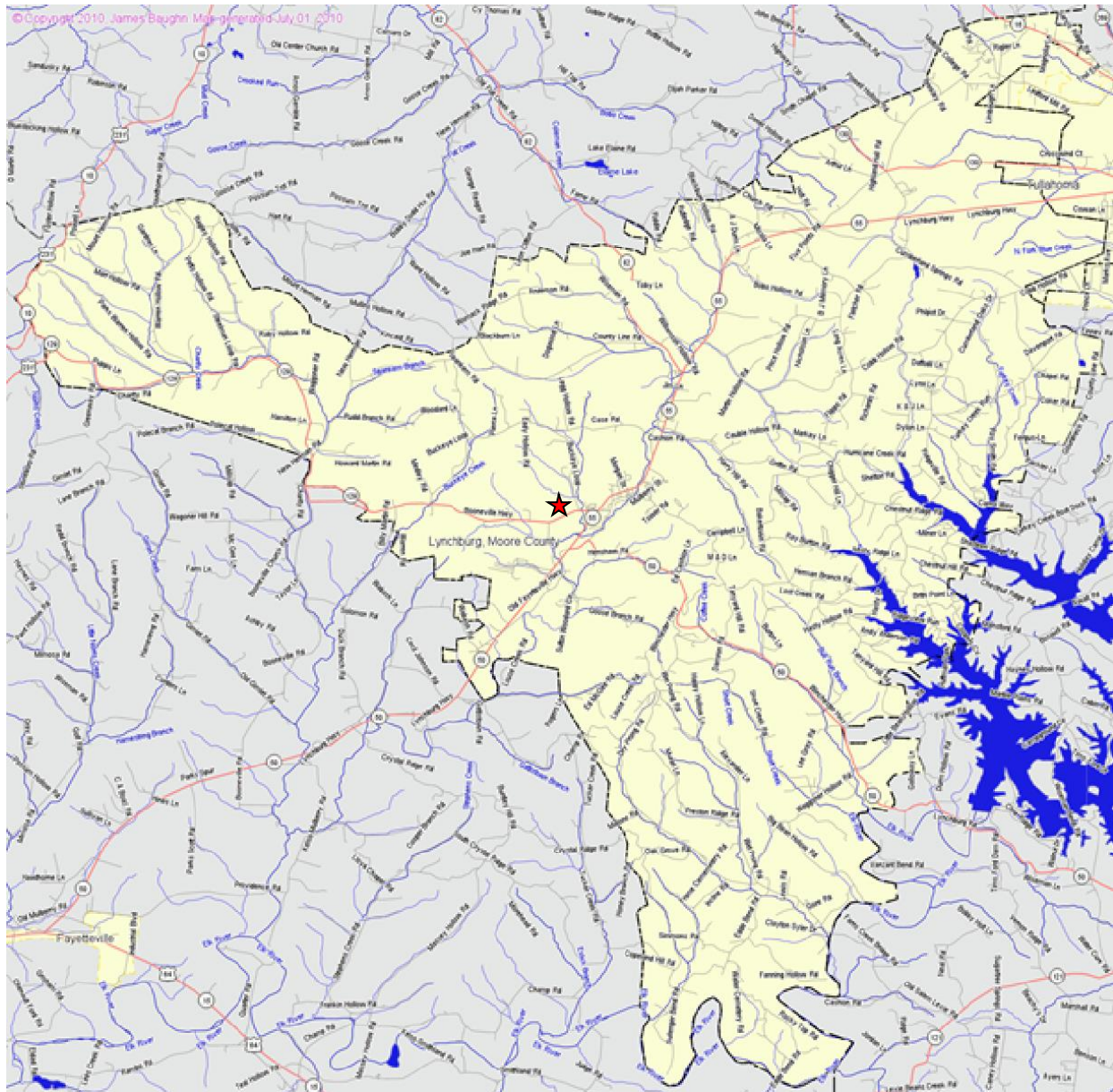
Chart 5.1

Moore County Solid Waste Convenience Center
Operating Hours and Recyclable Materials Collected

#	Location	Hours	Days of Week
1	748 Booneville Highway (HWY 129 W) Lynchburg, TN 37352	06:30-10:30, 14:00-18:00	Monday-Tuesday
		Closed	Wednesday
		08:00-14:00	Thursday-Friday
		08:00-16:00	Saturday
		13:00-16:00	Sunday

Residential and commercial refuse is taken at this location. There is no fee for residential use. They also accept metal disposal with no fee at this location. Recycling bins are located at this facility.

Moore County scale level map
Moore County Solid Waste Department



Item #6

Describe current attitudes of the region and its citizens towards recycling, waste diversion, and waste disposal in general. Where recycling is provided, discuss participation within the region. Indicate current and ongoing education measures to curb apathy or negative attitude towards waste reduction. Are additional measures needed to change citizen's behaviors? If so, what specific behaviors need to be targeted and by what means?

Public Interest

Moore County continues to strive in improving recycling efforts and impressing upon its citizens the necessity of a strategic plan to diffuse the amount of waste in the solid waste stream. Complaints tend to be from the younger population in Moore County.

For the most part people in this area are pretty conscientious about recycling. Recycling totes are available at Moore County schools and the Moore County Mayor who doubles as the Solid Waste Director makes presentations in the Elementary Schools and meets with civic organizations to discuss the importance of recycling and to promote good recycling habits.

There is no mandated recycling program, it is entirely voluntary. The response for Moore County is to eliminate more of the items going into the landfill and recycle them. School programs, literature, ads to keep recycling in front of you, and disposal of the commodities at most convenience centers is the current means to Moore County Solid Waste Recycling education. Moore County residents need to improve their recycling efforts.

Item #7

The Solid Waste Management Act of 1991 states that all regions must reduce the amount of waste going into Class I landfills by 25%. Amendments to the Act allow for consideration of economic growth, and a "qualitative" method in which the reduction rate is compared on a yearly basis with the amount of Class I disposal. Provide a table showing reduction rate by each goal calculation methodology. Discuss how the region made the goal by each methodology or why they did not. If the Region did not meet the 25% waste reduction goal, what steps or infrastructure improvements should be taken to attain the goal and to sustain this goal into the future.

Moore County has a goal to reduce waste as much as possible within the region. Improving upon existing waste reduction and recycling programs, expanding services

and increasing participation are general means to accomplish the County's waste reduction goals.

Moore County failed to meet the 25% reduction using the Base Year comparison methodology, However Moore County-met the 25% mandated reduction for the last four years using the Real Time Comparison methodology as shown in the table above.

Measurement of Regional Waste Reduction Goal

County	Year	% Reduction Based on Base Year Comparison	% Reduction Based on Real Time Comparison
Moore	2010	-68%	89%
	2011	-46%	42%
	2012	17%	44%
	2013	19%	44%

Source: TDEC, Division of Solid Waste, Division of Solid Waste Assistance Program

During the years 2010 and 2011 Moore County was a single county region and joined up with the ISWA in 2012, which reflects the numbers above.

Moore County will continue to reach out to the Jack Daniel Distillery, local businesses and industries for commercial and industrial recycling numbers. The Jack Daniel Distillery accounts for the majority of the waste generated in the Waste reduction. Moore County has an extremely resourceful point of contact at Jack Daniel's Distillery to obtain reports from including their recycling numbers and waste stream information.

Item #8

A. Provide a chart indicating current collection and disposal capacity by facility site and the maximum capacity the current infrastructure can handle at maximum through put. Provide this for both Class I and Class III/IV disposal and recycled materials. Identify and discuss any potential shortfalls in materials management capacity whether these are at the collection or processor level.

Chart 8A

Site Name(s)	Current Capacity Yearly tonnage	Maximum Capacity	Projected Life of Facility
Moore Co Solid Waste Dept.	3000	unavailable	Indefinite

Source: Provided by Moore County Solid Waste Department

B. Provide a chart or other graphical representation showing public and private collection service provider area coverage within the county and municipalities. Include provider’s name, area of service, population served by provider, frequency of collection, yearly tons collected, and the type of service provided.

Chart 8B

Provider of Service	Service Area	Population Total Under This Service	Frequency of Service (Weekly, Bi- weekly, on call, etc.)	Tonnage Capacity	Type Service (Curbside, Convenience Center, Green Box)
Moore County	County-wide	6319	Weekly	Truck capacity	curbside

Source: Moore County Solid Waste Department

Item #9

Complete the chart below and discuss unmet financial needs to maintain current level of service. Provide a cost summary for current year expenditures and projected increased costs for unmet needs.

Table 9.1 Moore County Cost summary

Expenditures			
Description	Present Need \$/year	Unmet Needs \$/year	Total Needs (Present + Unmet) \$/year
Salary and Benefits			
Transportation/hauling			
Collection and Disposal Systems	33,700		
Equipment			
Sites			

Convenience Center			
Transfer Station			
Recycling Center	412,136		
MRF			
Landfills			
Site			
Operation			
Closure			
Post Closure Care			
Administration (supplies, communication costs, etc.)			
Education			
Public			
Continuing Ed.			
Other expenses			
REVENUE			
Host agreement fee			
Tipping fees			
Property taxes	212,000		
Sales tax			
Surcharges			
Disposal Fees			
Collection charges			
Industrial or Commercial charges			
Residential charges			
Convenience Centers charges			
Transfer Station charges	180,000		
Sale of Methane Gas			
Other sources: (Grants, bonds, interest, sales, etc.)	33,700		
Sale of recyclable material	25,000		

Source: Moore County Finance Dept.

Financial sheet information and cost summary is provided by the Moore County Solid Waste Department and Moore County Finance Department. Revenues for Moore County consist of county appropriations and collection fees along with the sale of recycled materials, grants, and revenues from citizen groups. Expenditures are salaries, equipment, additions/upkeep, facility management, landfill fees, and capital projects.

Item #10

Identify all current revenue sources by county and municipality that are used for materials and solid waste management. Project future revenue needs from these categories and discuss how this need will be met in the future. Use example in Chart 7 as an example to present data.

Table 10.1 Metropolitan Moore County current revenue sources

Community	Current Revenue
Moore County	Sale of Recyclables, General Fund, Tire Collection Fee
	General Fund

Source: Metropolitan Moore County Solid Waste Department

Disposal of e-waste and tires are problem areas and costly items collected for Moore County. Future landfill disposal fees will be increasing and grant funding continues to be a problem. Moore County is trying to pull as much out from the waste stream as possible to reduce landfill tonnage. Last year Moore County built a loading dock which helped in negotiations for cardboard recyclables.

Item #11

Discuss this region’s plan for managing their solid waste management system for the next five (5) years. Identify any deficiencies and suggest recommendations to eliminate deficiencies and provide sustainability of the system for the next five (5) years. Show how the region’s plan supports the Statewide Solid Waste Management Plan.

The South Central Tennessee Development District believes that continued commitment to recycling education will result in increased diversion in Moore County.

Moore County is in a new disposal contract for the next five years through the Interlocal (ISWA).

Moore County’s current reduction efforts are commendable. The Jack Daniel Distillery continues to recycle more each year. Moore County will always accept more cooperation from private enterprise and municipalities to help maintain old equipment and purchase new equipment.

Over the next five years Moore County can only improve with dedication of the local industry and Solid Waste Staff in place. The Solid Waste Department will continue to educate its school age children programs in existence. Moore County will continue to reach its mandated 25% diversion rate, while complying with all rules and regulations for solid waste management.

Sources:

U.S. Census Bureau

U.S. Bureau of Economic Analysis

Tennessee Comptroller of the Treasury

Tennessee Department of Labor

Tennessee Department of Revenue

South Central Tennessee Development District/STAFF

2010 Moore County Needs Assessment

2014 Moore County Annual Progress Report

Population Projection for the State of Tennessee for Moore County

Bureau of Labor Statistics

House Engineering LLC

Moore County Finance Department

TDEC, Division of Solid Waste Assistance Program

US Census Bureau, Population Projections for the State of Tennessee, 2010-2030.