

# The Labor Market Report

The Tennessee Department of Labor and Workforce Development

Phil Bredesen,  
Governor

James G. Neeley,  
Commissioner

April 2007 Data

## Annual Population Estimates for the U.S. and States, Census 2000 Thru Estimated 2006

### Special Points of Interest:

- Annual Population Estimates for the U.S. and States
- Tennessee Historical Civilian Labor Force Series, 1977 to Present
- County Unemployment Rates
- Civilian Labor Force Summary
- State Unemployment Insurance Activities

### Inside This Issue:

Chattanooga MSA	7
Knoxville MSA	8
Memphis MSA	9
Nashville MSA	10
Smaller MSAs	11
Consumer Price Index	12

The U.S. Census Bureau annually produces estimates of total resident population for each state and county. County population estimates are produced with a component of population change method, while the state population estimates are the sum of all county populations within the state. Those estimates, for years 2001 to 2006 are shown on Page 2. The base population comes from the Census 2000. It should be noted that there were adjustments made due to the effects of hurricanes Katrina and Rita.

The Census Bureau uses estimated components of population change to estimate changes in the population during a time period. These components consist of births, deaths, net internal migration, and net international migration. The details from this survey are available at the Census Bureau Web site at <http://www.census.gov/popest/estimates.php>.

### State Information

Texas gained more people than any other state between July 1, 2005, and July 1, 2006 (579,275). Florida and California followed, gaining 321,697 and 303,402, respectively. Rounding out the

top five states were Georgia (231,388) and Arizona (213,311). Tennessee had the 10th largest growth in total population with an increase of 83,058.

Arizona was the nation's fastest-growing state over the year with its population rising 3.6 percent. Nevada ranked second as its population climbed by 3.5 percent, followed by Idaho (2.6 percent), Georgia (2.5 percent), and Texas (2.5 percent). Tennessee had a growth rate last year of 1.4 percent.

The South and West again monopolized the list of fastest-growing states with Utah, North Carolina, Colorado, Florida and South Carolina rounding out the top 10. Colorado and South Carolina replaced Delaware and Oregon on the list this year.

From 2000 to 2006, the largest percentage growth was in Nevada (24.9), followed by Arizona (20.2), Georgia (14.4), and Utah (14.2).

According to the estimates, California remains the most populous state with a population of 36.5 million on July 1, 2006. Rounding out the top five states were Texas (23.5 million), New York (19.3 million), Florida (18.1 million) and Illinois (12.8 million).

Louisiana's population totaled 4.3 million on July 1, 2006, down nearly 220,000 from one year earlier. The state lost almost 5 percent of its pre-Hurricane Katrina population during the course of the year. During the previous one-year period (July 1, 2004, to July 1, 2005), Louisiana's population had grown by 12,000 to 4.5 million. North Dakota was the only other state with a declining population over the prior six years.

### Highlights

Some interesting information from the data is that the Northeast region grew by only 62,000 persons (0.1 percent) while the South increased by 1.5 million (1.4 percent) and the West increased by 1 million (1.5 percent). The Midwest region increased by 281,000 people (0.4 percent).

The South accounts for 36 percent of the total population, and the West comprises 23 percent. The Midwest and the East comprises 22 and 18 percent, respectively. North Carolina has moved to the 10th most populous state, passing New Jersey.

## Annual Population Estimates for the United States and States, Census 2000 to 2006

	Resident Population							Census 2000
	% change 2000-06	2006	2005	2004	2003	2002	2001	
<b>United States</b>	<b>6.4</b>	<b>299,398,484</b>	<b>296,507,061</b>	<b>293,638,158</b>	<b>290,796,023</b>	<b>288,125,973</b>	<b>285,226,284</b>	<b>281,421,906</b>
Alabama	3.4	4,599,030	4,548,327	4,517,442	4,495,089	4,477,571	4,466,618	4,447,100
Alaska	6.9	670,053	663,253	656,834	647,747	640,544	632,241	626,932
Arizona	20.2	6,166,318	5,953,007	5,745,674	5,582,252	5,445,333	5,300,366	5,130,632
Arkansas	5.1	2,810,872	2,775,708	2,746,823	2,723,645	2,706,198	2,691,665	2,673,400
California	7.6	36,457,549	36,154,147	35,841,254	35,466,365	35,024,517	34,550,466	33,871,648
Colorado	10.5	4,753,377	4,663,295	4,598,507	4,545,957	4,500,122	4,428,562	4,301,261
Connecticut	2.9	3,504,809	3,500,701	3,493,893	3,482,326	3,457,927	3,433,201	3,405,565
Delaware	8.9	853,476	841,741	828,762	816,861	805,591	795,450	783,600
Dist of Columbia	1.7	581,530	582,049	579,720	577,476	578,907	577,357	572,059
Florida	13.2	18,089,888	17,768,191	17,366,593	16,981,800	16,682,250	16,354,728	15,982,378
Georgia	14.4	9,363,941	9,132,553	8,935,151	8,750,259	8,597,927	8,424,033	8,186,453
Hawaii	6.1	1,285,498	1,273,278	1,259,299	1,245,606	1,233,249	1,221,419	1,211,537
Idaho	13.3	1,466,465	1,429,367	1,394,524	1,367,428	1,344,266	1,321,446	1,293,953
Illinois	3.3	12,831,970	12,765,427	12,713,548	12,649,778	12,595,003	12,524,663	12,419,293
Indiana	3.8	6,313,520	6,266,019	6,223,329	6,191,719	6,154,697	6,126,395	6,080,485
Iowa	1.9	2,982,085	2,965,524	2,953,679	2,942,070	2,935,295	2,932,151	2,926,324
Kansas	2.8	2,764,075	2,748,172	2,738,356	2,727,042	2,714,792	2,702,446	2,688,418
Kentucky	4.1	4,206,074	4,172,608	4,140,427	4,114,489	4,088,977	4,067,643	4,041,769
Louisiana	-4.1	4,287,768	4,507,331	4,495,706	4,480,925	4,470,543	4,463,421	4,468,976
Maine	3.7	1,321,574	1,318,220	1,313,921	1,307,151	1,296,817	1,286,419	1,274,923
Maryland	6.0	5,615,727	5,589,599	5,553,249	5,506,684	5,441,349	5,379,795	5,296,486
Massachusetts	1.4	6,437,193	6,433,367	6,435,995	6,439,592	6,431,247	6,406,727	6,349,097
Michigan	1.6	10,095,643	10,100,833	10,093,398	10,068,311	10,038,165	10,003,243	9,938,444
Minnesota	5.0	5,167,101	5,126,739	5,094,304	5,059,023	5,024,570	4,985,851	4,919,479
Mississippi	2.3	2,910,540	2,908,496	2,892,668	2,874,171	2,863,091	2,856,108	2,844,658
Missouri	4.4	5,842,713	5,797,703	5,752,861	5,712,355	5,680,259	5,643,232	5,595,211
Montana	4.7	944,632	934,737	926,345	917,193	910,357	906,148	902,195
Nebraska	3.3	1,768,331	1,758,163	1,746,980	1,737,017	1,727,040	1,719,315	1,711,263
Nevada	24.9	2,495,529	2,412,301	2,332,484	2,241,127	2,169,202	2,095,820	1,998,257
New Hampshire	6.4	1,314,895	1,306,819	1,297,961	1,285,918	1,273,970	1,258,408	1,235,786
New Jersey	3.7	8,724,560	8,703,150	8,675,879	8,632,553	8,577,514	8,506,516	8,414,350
New Mexico	7.5	1,954,599	1,925,985	1,900,620	1,877,598	1,855,353	1,832,783	1,819,046
New York	1.7	19,306,183	19,315,721	19,291,526	19,238,252	19,167,600	19,095,604	18,976,457
North Carolina	10.0	8,856,505	8,672,459	8,531,040	8,415,710	8,313,494	8,199,541	8,049,313
North Dakota	-1.0	635,867	634,605	635,848	632,620	633,649	636,349	642,200
Ohio	1.1	11,478,006	11,470,685	11,461,347	11,437,908	11,414,537	11,392,043	11,353,140
Oklahoma	3.7	3,579,212	3,543,442	3,522,827	3,504,347	3,488,447	3,466,687	3,450,654
Oregon	8.2	3,700,758	3,638,871	3,589,168	3,561,155	3,523,529	3,474,183	3,421,399
Pennsylvania	1.3	12,440,621	12,405,348	12,377,381	12,351,381	12,321,644	12,295,929	12,281,054
Rhode Island	1.8	1,067,610	1,073,579	1,078,930	1,074,783	1,068,568	1,058,510	1,048,319
South Carolina	7.7	4,321,249	4,246,933	4,194,694	4,142,356	4,101,122	4,060,728	4,012,012
South Dakota	3.6	781,919	774,883	770,188	763,913	760,291	758,106	754,844
<b>Tennessee</b>	<b>6.1</b>	<b>6,038,803</b>	<b>5,955,745</b>	<b>5,885,597</b>	<b>5,834,358</b>	<b>5,788,333</b>	<b>5,746,477</b>	<b>5,689,283</b>
Texas	12.7	23,507,783	22,928,508	22,517,901	22,134,047	21,762,430	21,357,926	20,851,820
Utah	14.2	2,550,063	2,490,334	2,421,500	2,355,785	2,325,921	2,288,374	2,233,169
Vermont	2.5	623,908	622,387	620,795	618,616	616,236	612,882	608,827
Virginia	8.0	7,642,884	7,564,327	7,472,448	7,375,863	7,285,707	7,192,701	7,078,515
Washington	8.5	6,395,798	6,291,899	6,205,535	6,130,323	6,070,176	5,995,397	5,894,121
West Virginia	0.6	1,818,470	1,814,083	1,810,906	1,808,660	1,804,146	1,801,411	1,808,344
Wisconsin	3.6	5,556,506	5,527,644	5,498,807	5,466,929	5,438,527	5,404,733	5,363,675
Wyoming	4.3	515,004	508,798	505,534	501,490	498,973	494,067	493,782

**NOTE:** Census 2000 Resident Population is the decennial population as of April 1, 2000. All other years of resident population are estimates as of July 1 of that year.

**Source:** Population Estimates Program, U.S. Census Bureau

# Statewide

## HISTORICAL CIVILIAN LABOR FORCE

## UNEMPLOYMENT RATES BY COUNTY\*

(NUMBERS IN THOUSANDS)

MONTHLY DATA NOT SEASONALLY ADJUSTED

Year and Month	Civilian Labor Force							Unemployed Number	Rate (%)
	Total	Employment	Employed						
			Total	Nonfarm Employment					
			**Manu- facturing	**Trade	**Services				
1977	1,939.0	1,816.7	1,648.1	507.5	357.2	254.5	122.3	6.3 %	
1978	1,983.7	1,866.2	1,737.0	526.0	379.1	270.7	117.5	5.9	
1979	2,040.5	1,918.5	1,777.3	524.7	388.7	285.4	122.0	6.0	
1980	2,071.6	1,920.1	1,746.6	502.1	379.7	291.0	151.5	7.3	
1981	2,123.1	1,927.6	1,775.4	506.9	379.9	304.4	195.5	9.2	
1982	2,141.2	1,891.5	1,703.0	466.7	380.5	313.1	249.7	11.7	
1983	2,188.2	1,932.4	1,719.0	468.6	389.9	323.4	255.8	11.7	
1984	2,233.5	2,026.4	1,812.0	497.1	413.3	344.3	207.1	9.3	
1985	2,255.7	2,070.0	1,867.8	492.4	435.3	360.2	185.7	8.2	
1986	2,291.3	2,110.7	1,929.8	490.5	452.1	384.7	180.6	7.9	
1987	2,324.1	2,166.5	2,011.6	497.4	477.2	408.9	157.6	6.8	
1988	2,333.6	2,197.2	2,092.1	511.9	495.6	440.3	136.4	5.8	
1989	2,364.9	2,241.3	2,167.2	524.5	508.4	467.2	123.6	5.2	
1990	2,401.1	2,269.0	2,193.2	493.4	379.1	611.0	132.1	5.5	
1991	2,425.4	2,266.0	2,183.6	480.3	373.0	626.7	159.4	6.6	
1992	2,479.5	2,316.7	2,245.0	492.8	374.1	664.8	162.8	6.6	
1993	2,543.3	2,391.6	2,328.5	502.8	382.5	709.8	151.7	6.0	
1994	2,645.7	2,511.1	2,423.0	513.8	398.4	751.4	134.6	5.1	
1995	2,718.0	2,574.0	2,498.9	518.0	412.6	795.0	144.0	5.3	
1996	2,758.4	2,611.0	2,533.3	501.5	420.9	814.3	147.4	5.3	
1997	2,788.3	2,640.0	2,584.0	498.0	430.5	849.7	148.3	5.3	
1998	2,811.7	2,685.2	2,638.4	498.6	437.1	875.7	126.5	4.5	
1999	2,838.7	2,722.1	2,685.3	494.7	443.6	900.8	116.6	4.1	
2000	2,871.5	2,756.5	2,728.9	488.1	447.5	930.9	115.0	4.0	
2001	2,859.7	2,728.5	2,688.3	454.2	446.6	921.5	131.2	4.6	
2002	2,883.4	2,733.7	2,664.4	428.5	438.7	938.0	149.7	5.2	
2003	2,892.0	2,727.5	2,667.5	414.1	440.8	950.3	164.5	5.7	
2004	2,897.0	2,739.0	2,706.1	411.8	447.5	978.7	158.1	5.5	
2005	2,909.6	2,747.6	2,743.1	408.8	454.6	1,005.6	161.9	5.6	
2006	2,990.2	2,835.5	2,783.1	400.1	460.6	1,030.4	154.6	5.2	
<b>2007</b>									
January	3,002.4	2,841.9	2,754.7	393.7	457.9	1,015.7	160.5	5.3 %	
February	3,004.6	2,845.4	2,761.6	392.1	456.0	1,019.7	159.2	5.3	
March (r)	3,029.1	2,878.4	2,791.9	393.5	461.1	1,035.3	150.8	5.0	
April (p)	3,004.1	2,881.1	2,806.2	393.6	462.4	1,044.6	123.0	4.1	
May									
June									
July									
August									
September									
October									
November									
December									

(r)=revised

\*\*These industries not comparable to industry employment data before

(p)=preliminary

1990 because of change to NAICS coding system.

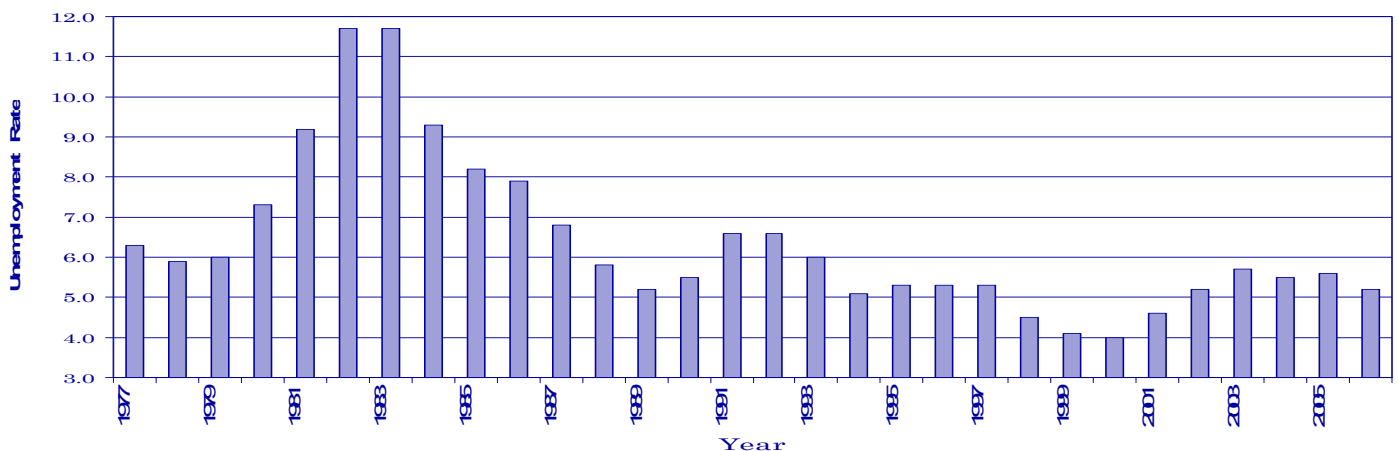
Trade = Wholesale and Retail Trade

Services = Professional/Business Services, Educational/Health Services, Leisure/Hospitality, and Other Services.

County	Apr 2006	Apr 2007	County	Apr 2006	Apr 2007
Anderson	4.8	3.8	Lauderdale	7.8	5.6
Bedford	4.8	3.8	Lawrence	12.0	7.5
Benton	7.0	5.1	Lewis	6.6	6.1
Bledsoe	6.7	5.9	Lincoln	4.3	3.3
Blount	4.4	3.4	Loudon	4.3	3.7
Bradley	5.0	3.9	Macon	7.1	5.5
Campbell	6.4	4.7	Madison	5.3	4.5
Cannon	5.2	4.6	Marion	5.3	5.6
Carroll	6.0	5.5	Marshall	6.3	5.4
Carter	5.2	4.5	Maury	5.0	5.3
Cheatham	4.2	3.3	McMinn	5.7	4.7
Chester	5.2	4.6	McNairy	5.6	4.9
Claiborne	5.5	4.4	Meigs	6.9	5.7
Clay	11.7	6.8	Monroe	5.5	5.4
Cocke	7.4	5.5	Montgomery	4.5	4.0
Coffee	5.6	4.3	Moore	4.6	3.8
Crockett	6.9	5.4	Morgan	7.0	5.3
Cumberland	5.8	4.8	Obion	5.3	4.8
Davidson	4.2	3.4	Overton	5.8	5.8
Decatur	6.8	5.0	Perry	5.7	5.9
DeKalb	5.5	4.1	Pickett	7.3	7.3
Dickson	4.5	3.5	Polk	5.7	4.4
Dyer	6.0	4.3	Putnam	5.4	3.9
Fayette	5.2	4.5	Rhea	6.5	5.2
Fentress	5.9	6.5	Roane	5.5	4.1
Franklin	5.9	4.3	Robertson	4.7	3.7
Gibson	7.6	6.4	Rutherford	4.1	3.5
Giles	7.2	5.6	Scott	6.5	7.1
Grainger	5.4	4.6	Sequatchie	4.3	4.8
Greene	8.3	6.1	Sevier	5.4	4.1
Grundy	8.4	5.8	Shelby	5.7	4.5
Hamblen	5.9	4.0	Smith	5.8	4.3
Hamilton	4.3	3.3	Stewart	9.0	5.7
Hancock	7.0	5.2	Sullivan	4.7	3.7
Hardeman	6.8	5.4	Sumner	4.4	3.7
Hardin	6.2	5.1	Tipton	5.4	4.7
Hawkins	5.7	4.1	Trousdale	6.1	4.9
Haywood	6.4	5.1	Unicoi	6.0	4.5
Henderson	6.6	5.2	Union	4.9	3.7
Henry	7.2	5.5	Van Buren	7.9	5.3
Hickman	5.1	4.1	Warren	9.7	6.4
Houston	7.8	4.5	Washington	4.7	3.7
Humphreys	6.2	4.5	Wayne	11.0	6.4
Jackson	6.6	6.5	Weakley	5.8	4.5
Jefferson	5.5	4.4	White	9.2	5.7
Johnson	6.4	5.2	Williamson	3.6	2.8
Knox	4.1	3.0	Wilson	4.4	3.4
Lake	7.0	4.7			

\*Data Not Seasonally Adjusted

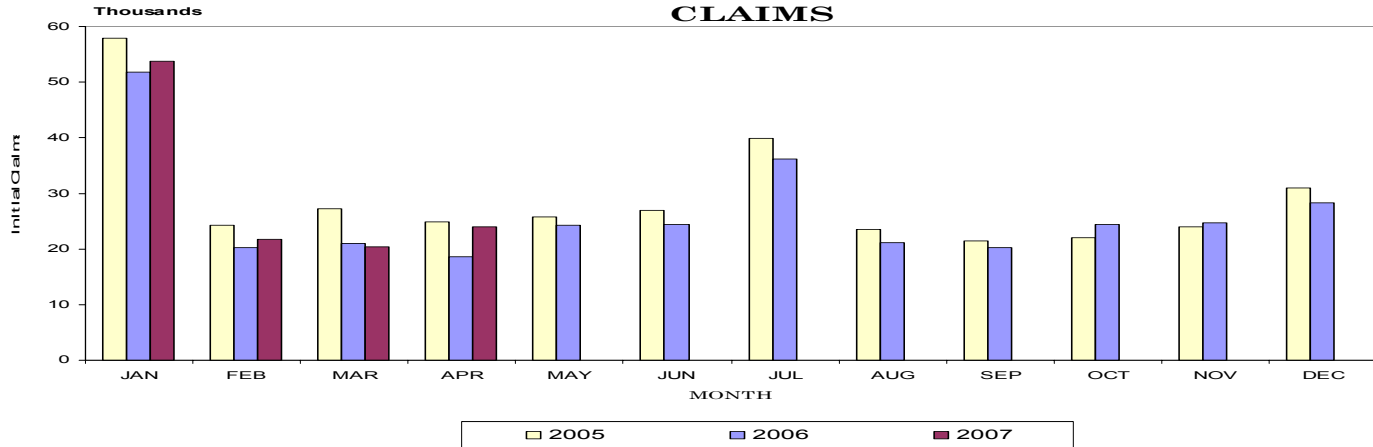
### Unemployment Rates 1977-2006



# Statewide

## UNEMPLOYMENT INSURANCE ACTIVITIES

### MONTHLY INITIAL CLAIMS



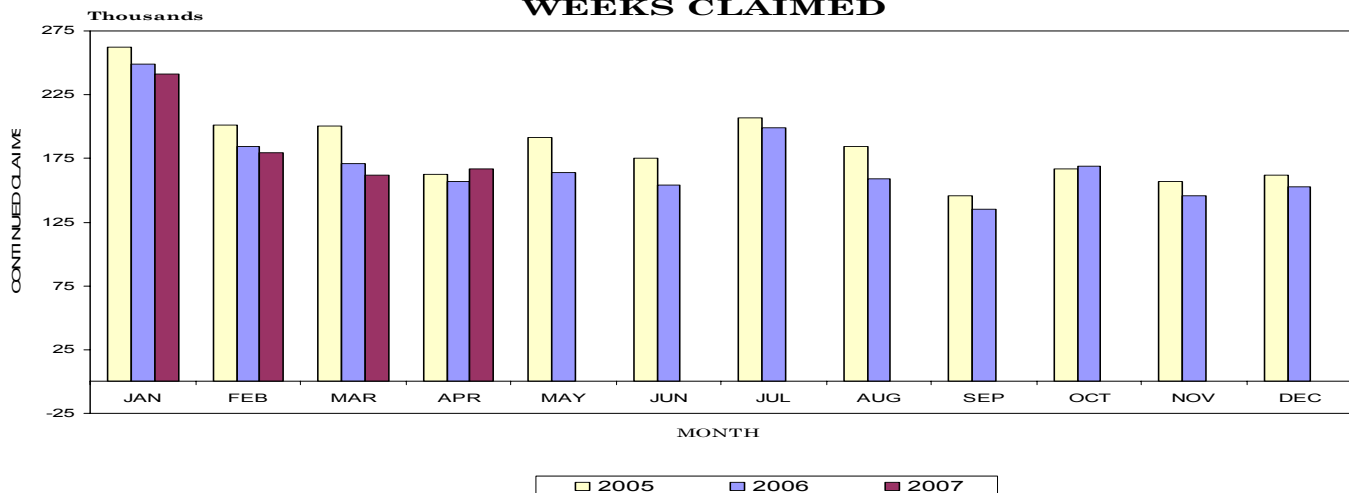
## BENEFIT PROGRAMS

STATE BENEFIT PROGRAM				FEDERAL BENEFIT PROGRAMS			
CLAIMS	Apr. 2006	Mar. 2007	Apr. 2007	FORMER FEDERAL EMPLOYEES	Apr. 2006	Mar. 2007	Apr. 2007
Initial Claims	18,646	20,330	23,947	Benefits Paid	\$344,539	\$298,658	\$293,326
Continued Weeks Claimed	157,153	162,040	166,637	Benefit Weeks Claimed	1,090	1,029	934
Nonmonetary Determinations	5,376	6,619	5,289	Initial Claims	102	86	96
Appeals Decisions	1,524	1,580	1,696	Continued Weeks Claimed	1,282	1,055	1,072
Lower Authority	1,303	1,408	1,405	Appeals Decisions	8	11	12
Higher Authority	221	172	291				
BENEFITS				FORMER MILITARY PERSONNEL			
Amount Paid	\$31,062,127	\$31,942,418	\$33,686,147	Benefits Paid	\$776,539	\$401,993	\$429,621
Benefit Weeks Paid	137,171	160,801	148,717	Benefit Weeks Claimed	2,487	1,447	1,387
Average Weekly Benefit Amount	\$217	\$217	\$222	Initial Claims	129	146	131
First Payments	7,825	8,841	8,997	Continued Weeks Claimed	2,673	1,418	1,513
Final Payments	4,293	3,722	4,302	Appeals Decisions	3	11	10
Average Weeks Duration	14	13	13				
Trust Fund Balance*	\$570,522,771	\$555,637,051	\$650,405,664				

\*Trust Fund includes a one-time deposit in March 2002 of \$162 million of Reed Act funds.

## CONTINUED WEEKS CLAIMED

### MONTHLY CONTINUED WEEKS CLAIMED



# Statewide

## ESTIMATED NONFARM EMPLOYMENT (in thousands)

Industry	Revised		Preliminary	Net Change	
	April 2006	March 2007		Apr. 2006	Mar. 2007
Total Nonfarm	2,780.7	2,791.9	<b>2,806.2</b>	25.5	14.3
Total Private	2,359.2	2,371.2	<b>2,384.3</b>	25.1	13.1
Goods-Producing	537.1	533.3	<b>535.2</b>	-1.9	1.9
Natural Resources & Mining	4.0	4.0	<b>4.0</b>	0.0	0.0
Construction	129.5	135.8	<b>137.6</b>	8.1	1.8
Manufacturing	403.6	393.5	<b>393.6</b>	-10.0	0.1
Durable Goods Manufacturing	253.3	248.9	<b>248.8</b>	-4.5	-0.1
Wood Product Manufacturing	18.1	18.0	<b>18.0</b>	-0.1	0.0
Nonmetallic Mineral Product Manufacturing	16.2	16.6	<b>16.7</b>	0.5	0.1
Primary Metal Manufacturing	11.7	11.4	<b>11.3</b>	-0.4	-0.1
Fabricated Metal Product Manufacturing	43.7	45.0	<b>44.8</b>	1.1	-0.2
Machinery Manufacturing	34.2	32.9	<b>32.9</b>	-1.3	0.0
Computer & Electronic Product Manufacturing	9.5	8.6	<b>8.6</b>	-0.9	0.0
Electrical Equipment & Appliance Mfg.	23.4	23.3	<b>23.5</b>	0.1	0.2
Transportation Equipment Manufacturing	63.0	61.6	<b>61.6</b>	-1.4	0.0
Motor Vehicle Parts Manufacturing	36.9	35.6	<b>35.3</b>	-1.6	-0.3
Furniture & Related Product Manufacturing	18.5	16.9	<b>17.0</b>	-1.5	0.1
Miscellaneous Manufacturing	15.0	14.6	<b>14.4</b>	-0.6	-0.2
Nondurable Goods Manufacturing	150.3	144.6	<b>144.8</b>	-5.5	0.2
Textile Mills, Products, & Apparel	16.5	14.9	<b>14.8</b>	-1.7	-0.1
Food Manufacturing	34.3	33.5	<b>33.2</b>	-1.1	-0.3
Animal Slaughtering & Processing	12.1	11.9	<b>12.1</b>	0.0	0.2
Bakeries & Tortilla Manufacturing	7.6	7.2	<b>7.2</b>	-0.4	0.0
Beverage & Tobacco Product Manufacturing	5.3	4.8	<b>4.8</b>	-0.5	0.0
Paper Manufacturing	18.4	17.9	<b>18.1</b>	-0.3	0.2
Printing & Related Support Activities	17.6	17.1	<b>16.8</b>	-0.8	-0.3
Chemical Manufacturing	26.3	25.4	<b>25.4</b>	-0.9	0.0
Plastics & Rubber Products Manufacturing	29.5	28.7	<b>29.2</b>	-0.3	0.5
Plastics Product Manufacturing	15.5	15.3	<b>15.6</b>	0.1	0.3
Rubber Product Manufacturing	14.0	13.4	<b>13.6</b>	-0.4	0.2
Service-Providing	2,243.6	2,258.6	<b>2,271.0</b>	27.4	12.4
Trade, Transportation, & Utilities	603.7	608.0	<b>609.3</b>	5.6	1.3
Wholesale Trade	131.8	133.8	<b>134.3</b>	2.5	0.5
Merchant Wholesalers, Durable Goods	68.2	69.6	<b>69.8</b>	1.6	0.2
Merchant Wholesalers, Nondurable Goods	47.0	47.1	<b>47.3</b>	0.3	0.2
Wholesale Electronic Markets	16.6	17.1	<b>17.2</b>	0.6	0.1
Retail Trade	325.8	327.3	<b>328.1</b>	2.3	0.8
Motor Vehicle & Parts Dealers	43.8	43.4	<b>44.1</b>	0.3	0.7
Furniture & Home Furnishings Stores	10.3	10.3	<b>10.1</b>	-0.2	-0.2
Building Material, Garden Equipment, & Food & Beverage Stores	29.1	29.9	<b>30.8</b>	1.7	0.9
Health & Personal Care Stores	46.1	46.3	<b>46.8</b>	0.7	0.5
Gasoline Stations	22.4	23.0	<b>22.9</b>	0.5	-0.1
Clothing & Clothing Accessories Stores	24.1	24.3	<b>24.0</b>	-0.1	-0.3
Sporting Goods, Hobby, Book, & Music Stores	28.8	28.0	<b>27.9</b>	-0.9	-0.1
General Merchandise Stores	12.0	12.1	<b>11.9</b>	-0.1	-0.2
Miscellaneous Store Retailers	71.0	72.0	<b>71.1</b>	0.1	-0.9
Nonstore Retailers	17.7	17.0	<b>17.4</b>	-0.3	0.4
Transportation, Warehousing, & Utilities	11.5	11.7	<b>11.8</b>	0.3	0.1
Utilities	146.1	146.9	<b>146.9</b>	0.8	0.0
Transportation & Warehousing	3.4	3.4	<b>3.3</b>	-0.1	-0.1
Truck Transportation	142.7	143.5	<b>143.6</b>	0.9	0.1
Information	63.8	64.7	<b>64.4</b>	0.6	-0.3
Publishing Industries (except internet)	49.9	50.8	<b>51.4</b>	1.5	0.6
Telecommunications	14.6	14.5	<b>14.5</b>	-0.1	0.0
Financial Activities	15.9	16.9	<b>17.1</b>	1.2	0.2
Finance & Insurance	143.5	143.8	<b>143.8</b>	0.3	0.0
Real Estate, Rental, & Leasing	107.1	106.9	<b>106.8</b>	-0.3	-0.1
Professional, Scientific, & Technical Services	36.4	36.9	<b>37.0</b>	0.6	0.1
Management of Companies & Enterprises	316.5	318.2	<b>319.2</b>	2.7	1.0
Administrative, Support, & Waste Management	108.5	108.7	<b>109.1</b>	0.6	0.4
Educational & Health Services	23.6	23.7	<b>23.7</b>	0.1	0.0
Educational Services	184.4	185.8	<b>186.4</b>	2.0	0.6
Health Care & Social Assistance	338.0	344.2	<b>345.5</b>	7.5	1.3
Ambulatory Health Care Services	46.2	46.5	<b>47.3</b>	1.1	0.8
Hospitals	291.8	297.7	<b>298.2</b>	6.4	0.5
Nursing & Residential Care Facilities	108.3	111.7	<b>111.9</b>	3.6	0.2
Social Assistance	90.1	90.9	<b>90.9</b>	0.8	0.0
Leisure & Hospitality	52.2	53.0	<b>53.3</b>	1.1	0.3
Arts, Entertainment, & Recreation	41.2	42.1	<b>42.1</b>	0.9	0.0
Accommodation & Food Services	270.0	271.4	<b>278.2</b>	8.2	6.8
Accommodation	30.2	28.5	<b>31.7</b>	1.5	3.2
Food Services & Drinking Places	239.8	242.9	<b>246.5</b>	6.7	3.6
Other Services	34.7	34.1	<b>35.4</b>	0.7	1.3
Repair & Maintenance	205.1	208.8	<b>211.1</b>	6.0	2.3
Personal & Laundry Services	100.5	101.5	<b>101.7</b>	1.2	0.2
Government	22.0	22.6	<b>22.1</b>	0.1	-0.5
Federal Government	24.7	25.1	<b>25.2</b>	0.5	0.1
State Government	421.5	420.7	<b>421.9</b>	0.4	1.2
State Government Educational Services	48.5	48.4	<b>48.4</b>	-0.1	0.0
Local Government	99.7	98.7	<b>99.7</b>	0.0	1.0
Local Government Educational Services	51.6	51.0	<b>51.6</b>	0.0	0.6
Local Government Educational Services	273.3	273.6	<b>273.8</b>	0.5	0.2
Local Government Educational Services	141.4	143.5	<b>145.2</b>	3.8	1.7

## HOURS AND EARNINGS OF PRODUCTION WORKERS

### AVERAGE WEEKLY EARNINGS

Industry	Apr. 2006	Mar. 2007	Apr. 2007
Manufacturing	\$547.32	\$545.69	\$545.66
Durable Goods Manufacturing	\$532.51	\$532.54	\$534.66
Fabricated Metal Product Manufacturing	\$603.72	\$632.31	\$636.81
Machinery Manufacturing	\$520.70	\$589.55	\$619.05
Nondurable Goods Manufacturing	\$574.06	\$567.22	\$566.40
Food Manufacturing	\$435.25	\$431.39	\$415.45

### AVERAGE WEEKLY HOURS

Industry	Apr. 2006	Mar. 2007	Apr. 2007
Manufacturing	38.9	39.6	39.2
Durable Goods Manufacturing	38.2	39.1	38.8
Fabricated Metal Product Manufacturing	39.0	40.9	40.9
Machinery Manufacturing	38.8	43.8	42.9
Nondurable Goods Manufacturing	40.2	40.4	40.0
Food Manufacturing	35.3	35.8	35.0

### AVERAGE HOURLY EARNINGS

Industry	Apr. 2006	Mar. 2007	Apr. 2007
Manufacturing	\$14.07	\$13.78	\$13.92
Durable Goods Manufacturing	\$13.94	\$13.62	\$13.78
Fabricated Metal Product Manufacturing	\$15.48	\$15.46	\$15.57
Machinery Manufacturing	\$13.42	\$13.46	\$14.43
Nondurable Goods Manufacturing	\$14.28	\$14.04	\$14.16
Food Manufacturing	\$12.33	\$12.05	\$11.87

## NONFARM EMPLOYMENT AND LABOR FORCE IN TENNESSEE

Tennessee's seasonally adjusted estimated unemployment rate for April 2007 was 4.4 percent, down 0.3 percent from the March 2007 rate. This is the first month since July 2004 that the current rate is less than the national average.

The United States' unemployment rate was 4.5 percent in April 2007. In April 2006, the national unemployment rate was 4.7 percent, and the state's unemployment rate was 5.2 percent.

Across Tennessee, the unemployment rate decreased in 93 counties, increased in one county, and remained the same in one county. The lowest rate occurred in Williamson County at 2.8 percent, down 0.4 percent from the previous month. The highest rate was Lawrence County's 7.5 percent, down from 8.5 percent in March 2007.

(Continued on Page 6)

# CIVILIAN LABOR FORCE

## CIVILIAN LABOR FORCE SUMMARY

	April 2006				March 2007				April 2007			
	Labor Force	Employment	Unemployed	Rate	Labor Force	Employment	Unemployed	Rate	Labor Force	Employment	Unemployed	Rate
<b>Seasonally Adjusted</b>												
U.S.	150,862,000	143,763,000	7,098,000	4.7	152,979,000	146,254,000	6,724,000	4.4	152,587,000	145,786,000	6,801,000	4.5
TENNESSEE	2,980,400	2,824,100	156,300	5.2	3,052,200	2,907,700	144,500	4.7	3,030,600	2,898,700	131,900	4.4
<b>Not Seasonally Adjusted</b>												
U.S.	150,209,000	143,405,000	6,804,000	4.5	152,236,000	145,323,000	6,913,000	4.5	151,829,000	145,297,000	6,532,000	4.3
TENNESSEE	2,954,600	2,801,700	152,900	5.2	3,029,100	2,878,400	150,800	5.0	3,004,100	2,881,100	123,000	4.1
<b>Metropolitan Statistical Areas</b>												
Chattanooga	256,720	245,410	11,310	4.4	262,710	252,150	10,560	4.0	261,300	251,900	9,400	3.6
Clarksville	106,710	100,220	6,490	6.1	109,490	103,870	5,620	5.1	108,280	103,370	4,910	4.5
Cleveland	54,980	52,180	2,800	5.1	55,970	53,250	2,720	4.9	55,070	52,860	2,200	4.0
Jackson	54,380	51,490	2,890	5.3	56,370	53,320	3,050	5.4	55,850	53,330	2,520	4.5
Johnson City	96,110	91,360	4,750	4.9	98,380	93,760	4,620	4.7	98,350	94,420	3,930	4.0
Kingsport-Bristol	142,710	136,120	6,600	4.6	146,030	139,500	6,530	4.5	144,630	138,950	5,690	3.9
Knoxville	343,430	328,880	14,550	4.2	352,090	338,540	13,550	3.8	351,080	339,790	11,290	3.2
Memphis	600,640	567,310	33,330	5.5	615,140	581,510	33,630	5.5	611,800	583,640	28,160	4.6
Morristown	64,320	60,680	3,640	5.7	65,560	61,900	3,660	5.6	64,740	62,010	2,730	4.2
Nashville	759,600	727,160	32,440	4.3	780,060	748,520	31,550	4.0	777,440	750,690	26,760	3.4
<b>Micropolitan Statistical Areas</b>												
Athens	24,570	23,170	1,400	5.7	25,140	23,760	1,380	5.5	24,820	23,640	1,180	4.7
Brownsville	9,570	8,960	610	6.4	10,060	9,440	620	6.2	9,750	9,250	500	5.1
Columbia	35,970	34,160	1,810	5.0	36,540	34,670	1,870	5.1	36,020	34,120	1,900	5.3
Cookeville	49,850	47,050	2,800	5.6	50,770	48,000	2,770	5.5	50,180	47,910	2,280	4.5
Crossville	22,760	21,440	1,320	5.8	23,180	21,690	1,490	6.4	22,690	21,590	1,100	4.8
Dyersburg	17,440	16,390	1,050	6.0	17,550	16,580	970	5.5	17,210	16,470	750	4.3
Greeneville	32,550	29,830	2,710	8.3	32,990	30,440	2,560	7.7	32,220	30,240	1,980	6.1
Harriman	26,210	24,770	1,430	5.5	26,910	25,570	1,340	5.0	26,610	25,530	1,080	4.1
Humboldt	20,860	19,280	1,580	7.6	21,430	19,800	1,620	7.6	21,130	19,780	1,360	6.4
LaFollette	16,560	15,500	1,060	6.4	16,720	15,710	1,010	6.1	16,660	15,870	790	4.7
Lawrenceburg	16,900	14,880	2,030	12.0	16,850	15,420	1,420	8.5	16,550	15,320	1,230	7.5
Lewisburg	12,530	11,740	790	6.3	12,880	12,180	700	5.5	12,520	11,840	670	5.4
Martin	15,530	14,630	900	5.8	16,290	15,410	880	5.4	15,950	15,240	710	4.5
McMinnville	18,140	16,380	1,760	9.7	18,190	16,840	1,340	7.4	17,530	16,410	1,120	6.4
Newport	15,970	14,790	1,180	7.4	16,580	15,250	1,320	8.0	16,210	15,310	900	5.5
Paris	14,020	13,010	1,000	7.2	14,280	13,290	1,000	7.0	14,010	13,240	770	5.5
Sevierville	45,960	43,490	2,470	5.4	47,280	43,810	3,470	7.3	47,510	45,560	1,950	4.1
Shelbyville	21,920	20,860	1,050	4.8	22,650	21,680	970	4.3	22,290	21,450	840	3.8
Tullahoma	48,230	45,510	2,730	5.7	49,360	46,830	2,530	5.1	48,610	46,550	2,060	4.2
Union City	18,250	17,230	1,020	5.6	19,420	18,290	1,120	5.8	18,970	18,000	980	5.2

(Continued from Page 5) Total nonfarm employment increased by 25,500 jobs from April 2006 to April 2007. During this period, there were increases in leisure/hospitality (up 8,200 jobs), which includes an increase of 6,700 jobs in accommodation/food services and 1,500 jobs in arts/entertainment/recreation; construction (up 8,100 jobs); education/health services (up 7,500 jobs), which includes an increase of 6,400 jobs in health care/social assistance; local government educational services (up 3,800 jobs); professional/business services (up 2,700 jobs), which includes an increase of 2,000 jobs

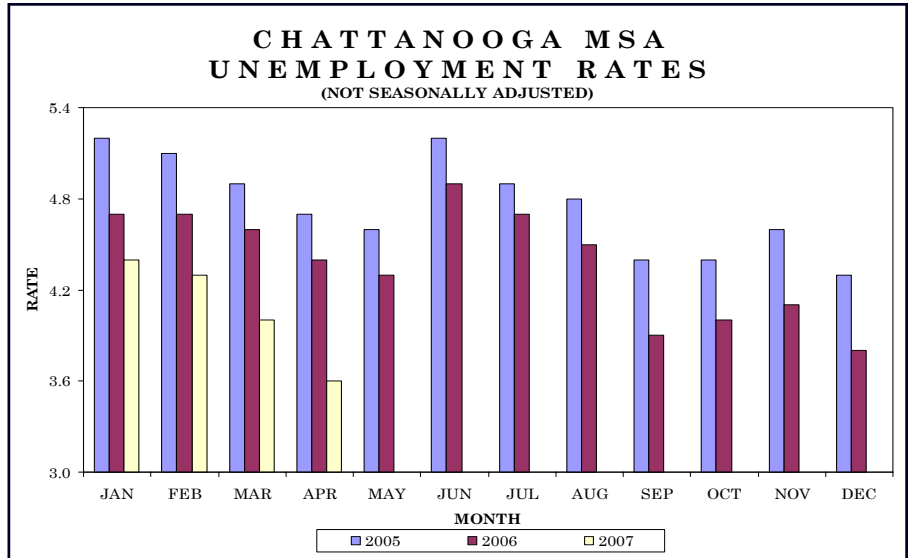
in administrative/support/waste management; wholesale trade (up 2,500 jobs), which includes an increase of 1,600 jobs in durable goods merchant wholesalers; retail trade (up 2,300 jobs), which includes an increase of 1,700 jobs in building material/garden equipment/supplies; and information (up 1,500 jobs), which includes an increase of 1,200 jobs in telecommunications. This was partially offset by manufacturing declines of 1,700 jobs in textile mills/products/apparel; 1,600 jobs in motor vehicle parts; 1,500 jobs in furniture/related product; and 1,300 jobs in machinery.

During April, nonfarm employment increased by 14,300 jobs. There were seasonal increases in accommodation/food services (up 3,600 jobs), which includes an increase of 2,300 jobs in food services/drinking places; arts/entertainment/recreation (up 3,200 jobs); construction (up 1,800 jobs); local government educational services (up 1,700 jobs); and education/health services (up 1,300 jobs).

The data from all the nonfarm employment estimates tables includes all full- and part-time nonfarm wage and salary employees who worked during or received pay for any part of the pay period that includes the 12th of the month. This is a count of jobs by place of work. Agricultural workers, proprietors, self-employed persons, workers in private households, and unpaid family workers are excluded. These numbers may not add due to rounding. Data is based on the 2005 benchmark.

Total nonfarm employment increased by 700 jobs from March to April. There were seasonal increases in leisure/hospitality (up 800 jobs), which includes an increase of 400 jobs in accommodation/food services.

During the past 12 months, nonfarm employment increased by 3,000 jobs. During that time, goods-producing jobs decreased by 200, and service-providing jobs increased by 3,200.



## HOURS AND EARNINGS OF PRODUCTION WORKERS

## CHATTANOOGA MSA

Industry	Average Weekly Earnings			Average Weekly Hours			Average Hourly Earnings		
	Apr. 2006	Mar. 2007	Apr. 2007	Apr. 2006	Mar. 2007	Apr. 2007	Apr. 2006	Mar. 2007	Apr. 2007
Manufacturing	\$534.36	\$536.77	\$540.20	41.2	41.1	41.3	\$12.97	\$13.06	\$13.08
Durable Goods Manufacturing	\$565.73	\$576.22	\$578.45	40.7	41.1	41.2	\$13.90	\$14.02	\$14.04
Nondurable Goods Manufacturing	\$506.24	\$495.26	\$501.32	41.7	41.1	41.5	\$12.14	\$12.05	\$12.08

## ESTIMATED NONFARM EMPLOYMENT (in thousands)

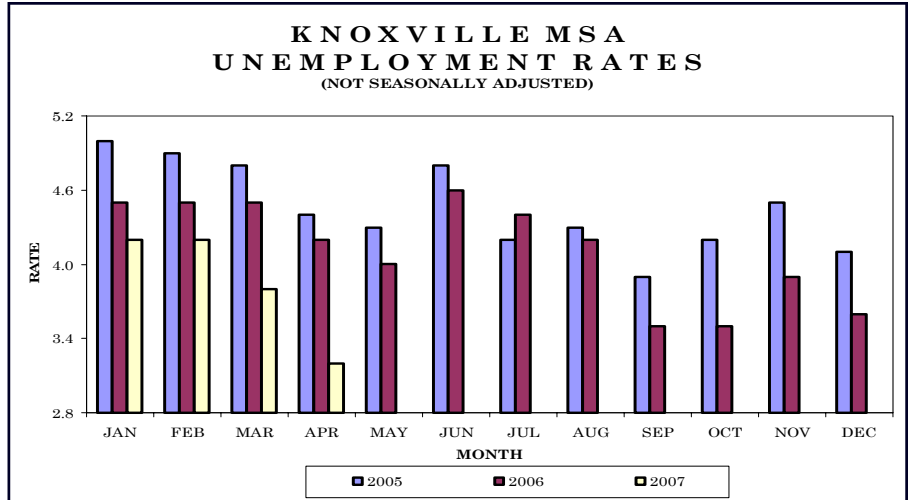
Industry	April 2006	Revised March 2007	Preliminary April 2007	Net Change	
				Apr. 2006 Apr. 2007	Mar. 2007 Apr. 2007
Total Nonfarm	245.1	247.4	<b>248.1</b>	3.0	0.7
Total Private	210.5	212.1	<b>213.0</b>	2.5	0.9
Goods-Producing	47.0	46.8	<b>46.8</b>	-0.2	0.0
Natural Resources, Mining, & Construction	11.4	11.4	<b>11.5</b>	0.1	0.1
Manufacturing	35.6	35.4	<b>35.3</b>	-0.3	-0.1
Durable Goods Manufacturing	16.6	16.5	<b>16.5</b>	-0.1	0.0
Nondurable Goods Manufacturing	19.0	18.9	<b>18.8</b>	-0.2	-0.1
Textile Mills	4.4	4.3	<b>4.3</b>	-0.1	0.0
Service-Providing	198.1	200.6	<b>201.3</b>	3.2	0.7
Trade, Transportation, & Utilities	55.7	56.4	<b>56.4</b>	0.7	0.0
Wholesale Trade	8.8	8.8	<b>8.8</b>	0.0	0.0
Retail Trade	26.6	27.0	<b>26.9</b>	0.3	-0.1
General Merchandise Stores	6.4	6.8	<b>6.7</b>	0.3	-0.1
Transportation, Warehousing, & Utilities	20.3	20.6	<b>20.7</b>	0.4	0.1
Information	3.2	3.7	<b>3.7</b>	0.5	0.0
Financial Activities	18.6	18.9	<b>19.0</b>	0.4	0.1
Professional & Business Services	26.4	27.7	<b>27.7</b>	1.3	0.0
Educational & Health Services	25.7	25.7	<b>25.8</b>	0.1	0.1
Leisure & Hospitality	23.2	22.1	<b>22.9</b>	-0.3	0.8
Accommodation & Food Services	20.5	20.1	<b>20.5</b>	0.0	0.4
Other Services	10.7	10.8	<b>10.7</b>	0.0	-0.1
Government	34.6	35.3	<b>35.1</b>	0.5	-0.2
Federal Government	6.3	6.4	<b>6.3</b>	0.0	-0.1
State Government	6.1	6.2	<b>6.2</b>	0.1	0.0
Local Government	22.2	22.7	<b>22.6</b>	0.4	-0.1



# Knoxville MSA - Anderson, Blount, Knox, Loudon, Union

Total nonfarm employment increased by 1,200 jobs from March to April. There were seasonal increases in leisure/hospitality (up 600 jobs), which includes an increase of 300 jobs in accommodation/food services; and administrative/support/waste management and natural resources/mining/construction (both up 400 jobs). This was partially offset by declines in general merchandise stores (down 300 jobs), and state government and transportation/warehousing/utilities (both down 200 jobs).

During the past 12 months, nonfarm employment increased by 4,900 jobs. During that time, goods-producing jobs increased by 1,400, while service-providing jobs increased by 3,500.



## HOURS AND EARNINGS OF PRODUCTION WORKERS KNOXVILLE MSA

Industry	Average Weekly Earnings			Average Weekly Hours			Average Hourly Earnings		
	Apr. 2006	Mar. 2007	Apr. 2007	Apr. 2006	Mar. 2007	Apr. 2007	Apr. 2006	Mar. 2007	Apr. 2007
Manufacturing	\$613.08	\$637.98	\$654.05	39.0	39.7	40.2	\$15.72	\$16.07	\$16.27
Durable Goods Manufacturing	\$672.52	\$698.54	\$714.80	39.7	39.6	40.0	\$16.94	\$17.64	\$17.87
Nondurable Goods Manufacturing	\$478.13	\$505.13	\$521.64	37.5	39.9	40.5	\$12.75	\$12.66	\$12.88

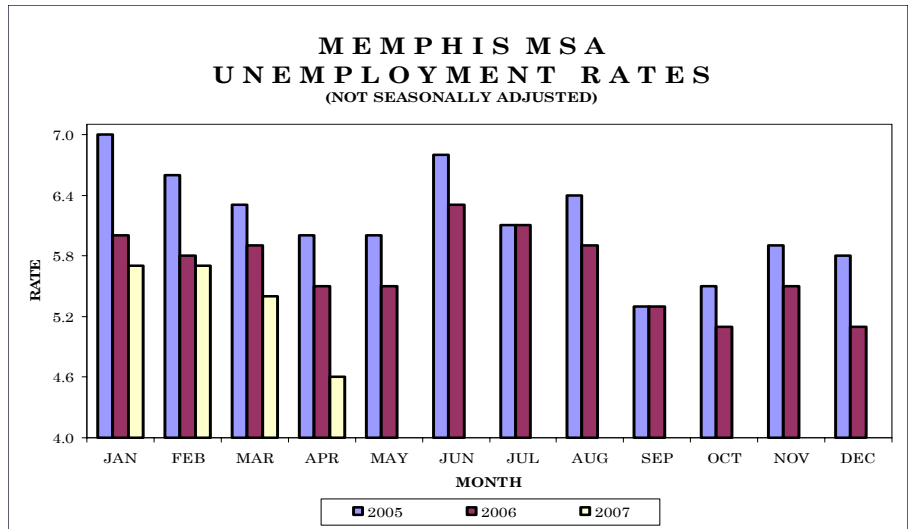
## ESTIMATED NONFARM EMPLOYMENT (in thousands)

Industry	April 2006	Revised	Preliminary	Net Change	
		March 2007	April 2007	Apr. 2006	Mar. 2007
				Apr. 2007	Apr. 2007
Total Nonfarm	331.5	335.2	<b>336.4</b>	4.9	1.2
Total Private	279.0	282.2	<b>283.5</b>	4.5	1.3
Goods-Producing	56.6	57.4	<b>58.0</b>	1.4	0.6
Natural Resources, Mining, & Construction	17.8	18.8	<b>19.2</b>	1.4	0.4
Manufacturing	38.8	38.6	<b>38.8</b>	0.0	0.2
Durable Goods Manufacturing	28.9	28.7	<b>28.7</b>	-0.2	0.0
Fabricated Metal Product Manufacturing	8.7	8.6	<b>8.6</b>	-0.1	0.0
Transportation Equipment Manufacturing	9.2	8.6	<b>8.6</b>	-0.6	0.0
Nondurable Goods Manufacturing	9.9	9.9	<b>10.1</b>	0.2	0.2
Service-Providing	274.9	277.8	<b>278.4</b>	3.5	0.6
Trade, Transportation, & Utilities	70.3	71.9	<b>71.8</b>	1.5	-0.1
Wholesale Trade	15.8	15.8	<b>15.7</b>	-0.1	-0.1
Retail Trade	43.5	44.8	<b>45.0</b>	1.5	0.2
Food & Beverage Stores	6.4	6.6	<b>6.7</b>	0.3	0.1
General Merchandise Stores	8.5	9.0	<b>8.7</b>	0.2	-0.3
Transportation, Warehousing, & Utilities	11.0	11.3	<b>11.1</b>	0.1	-0.2
Information	6.1	5.9	<b>5.9</b>	-0.2	0.0
Financial Activities	17.2	17.4	<b>17.4</b>	0.2	0.0
Professional & Business Services	39.7	39.5	<b>39.8</b>	0.1	0.3
Administrative, Support, & Waste Management	19.8	19.6	<b>20.0</b>	0.2	0.4
Educational & Health Services	40.3	40.7	<b>40.7</b>	0.4	0.0
Leisure & Hospitality	35.0	35.4	<b>36.0</b>	1.0	0.6
Accommodation & Food Services	31.6	31.9	<b>32.2</b>	0.6	0.3
Food Services & Drinking Places	28.8	29.1	<b>29.4</b>	0.6	0.3
Other Services	13.8	14.0	<b>13.9</b>	0.1	-0.1
Government	52.5	53.0	<b>52.9</b>	0.4	-0.1
Federal Government	5.1	5.0	<b>5.0</b>	-0.1	0.0
State Government	19.5	19.9	<b>19.7</b>	0.2	-0.2
Local Government	27.9	28.1	<b>28.2</b>	0.3	0.1



Total nonfarm employment increased by 2,600 jobs from March to April. There were seasonal increases in accommodation/food services (up 1,300 jobs), which includes an increase of 800 jobs in food services/drinking places; professional/business services (up 800 jobs), which includes an increase of 700 jobs in administrative/support/waste management; natural resources/mining/construction (up 400 jobs); educational/health services (up 300 jobs); and truck transportation (up 200 jobs).

This was partially offset by decreases in local government (down 400 jobs), financial activities (down 300 jobs), and retail trade (down 200 jobs).



**HOURS AND EARNINGS OF PRODUCTION WORKERS**

**MEMPHIS MSA**

Industry	Average Weekly Earnings			Average Weekly Hours			Average Hourly Earnings		
	Apr. 2006	Mar. 2007	Apr. 2007	Apr. 2006	Mar. 2007	Apr. 2007	Apr. 2006	Mar. 2007	Apr. 2007
Manufacturing	\$598.98	\$655.08	\$639.92	40.2	42.9	42.1	\$14.90	\$15.27	\$15.20
Durable Goods Manufacturing	\$513.99	\$547.03	\$540.38	38.3	39.9	39.3	\$13.42	\$13.71	\$13.75
Nondurable Goods Manufacturing	\$685.75	\$758.45	\$737.86	42.2	45.8	44.8	\$16.25	\$16.56	\$16.47

**ESTIMATED NONFARM EMPLOYMENT (in thousands)**

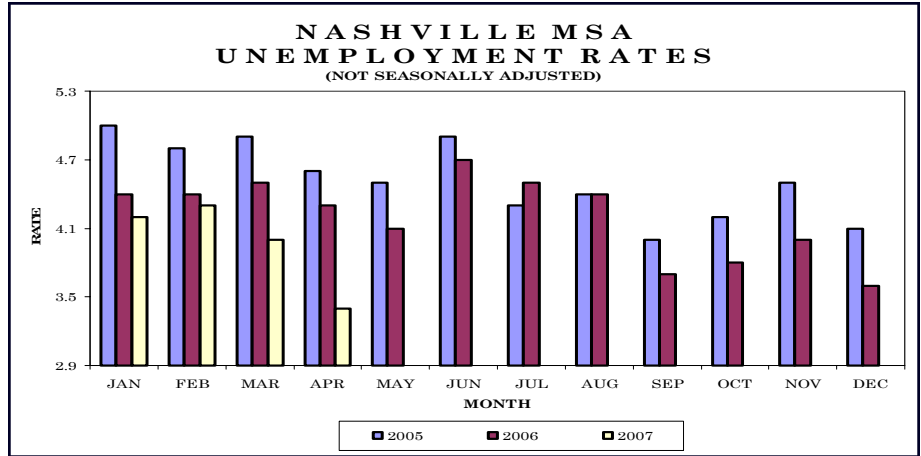
Industry	April 2006	Revised	Preliminary	Net Change	
		March 2007	April 2007	Apr. 2006	Mar. 2007
		2007	2007	Apr. 2007	Apr. 2007
Total Nonfarm	634.7	640.7	<b>643.3</b>	8.6	2.6
Total Private	545.7	551.5	<b>554.5</b>	8.8	3.0
Goods-Producing	81.6	81.5	<b>81.8</b>	0.2	0.3
Natural Resources, Mining, & Construction	27.2	27.4	<b>27.8</b>	0.6	0.4
Manufacturing	54.4	54.1	<b>54.0</b>	-0.4	-0.1
Durable Goods Manufacturing	27.0	27.0	<b>27.0</b>	0.0	0.0
Nondurable Goods Manufacturing	27.4	27.1	<b>27.0</b>	-0.4	-0.1
Service-Providing	553.1	559.2	<b>561.5</b>	8.4	2.3
Trade, Transportation, & Utilities	173.3	174.9	<b>174.9</b>	1.6	0.0
Wholesale Trade	37.5	37.7	<b>37.7</b>	0.2	0.0
Retail Trade	71.6	73.1	<b>72.9</b>	1.3	-0.2
Food & Beverage Stores	9.7	9.5	<b>9.5</b>	-0.2	0.0
General Merchandise Stores	14.1	13.9	<b>13.9</b>	-0.2	0.0
Transportation, Warehousing, & Utilities	64.2	64.1	<b>64.3</b>	0.1	0.2
Truck Transportation	15.7	15.8	<b>16.0</b>	0.3	0.2
Warehousing & Storage	8.0	8.0	<b>8.0</b>	0.0	0.0
Information	7.4	7.4	<b>7.4</b>	0.0	0.0
Financial Activities	32.7	32.8	<b>32.5</b>	-0.2	-0.3
Professional & Business Services	79.8	81.0	<b>81.8</b>	2.0	0.8
Professional, Scientific, & Technical Services	20.2	19.9	<b>20.0</b>	-0.2	0.1
Management of Companies & Enterprises	4.8	4.7	<b>4.7</b>	-0.1	0.0
Administrative, Support, & Waste Management	54.8	56.4	<b>57.1</b>	2.3	0.7
Educational & Health Services	75.4	77.4	<b>77.7</b>	2.3	0.3
Health Care & Social Assistance	65.0	66.2	<b>66.3</b>	1.3	0.1
Hospitals	24.5	24.9	<b>25.0</b>	0.5	0.1
Leisure & Hospitality	71.1	71.8	<b>73.6</b>	2.5	1.8
Accommodation & Food Services	63.5	64.5	<b>65.8</b>	2.3	1.3
Food Services & Drinking Places	44.3	45.3	<b>46.1</b>	1.8	0.8
Other Services	24.4	24.7	<b>24.8</b>	0.4	0.1
Government	89.0	89.2	<b>88.8</b>	-0.2	-0.4
Federal Government	14.5	14.6	<b>14.5</b>	0.0	-0.1
State Government	16.3	16.5	<b>16.6</b>	0.3	0.1
Local Government	58.2	58.1	<b>57.7</b>	-0.5	-0.4



## Nashville MSA — Cannon, Cheatham, Davidson, Dickson, Hickman, Macon, Robertson, Rutherford, Smith, Sumner, Trousdale, Williamson, Wilson

Total nonfarm employment increased by 2,500 jobs from March to April. There were seasonal increases in leisure/hospitality (up 1,400 jobs), which includes an increase of 800 jobs in accommodation/food services and 600 jobs in arts/entertainment/recreation; natural resources/mining/construction and educational services (both up 700 jobs); financial activities (up 300 jobs); and management of companies/enterprises (up 200 jobs).

This was partially offset by declines in general merchandise stores (down 400 jobs), transportation/warehousing/utilities and health care/social assistance (both down 300 jobs), and professional/scientific/technical services (down 200 jobs).



### HOURS AND EARNINGS OF PRODUCTION WORKERS NASHVILLE MSA

Industry	Average Weekly Earnings			Average Weekly Hours			Average Hourly Earnings		
	Apr. 2006	Mar. 2007	Apr. 2007	Apr. 2006	Mar. 2007	Apr. 2007	Apr. 2006	Mar. 2007	Apr. 2007
Manufacturing	\$573.39	\$596.09	\$594.95	38.9	40.8	40.5	\$14.74	\$14.61	\$14.69
Durable Goods Manufacturing	\$602.40	\$622.63	\$623.33	40.0	41.9	41.5	\$15.06	\$14.86	\$15.02
Nondurable Goods Manufacturing	\$514.17	\$543.74	\$538.86	36.7	38.7	38.6	\$14.01	\$14.05	\$13.96

### ESTIMATED NONFARM EMPLOYMENT (in thousands)

Industry	April	Revised	Preliminary	Net Change	
	2006	March 2007	April 2007	Apr. 2006	Mar. 2007
				Apr. 2007	Apr. 2007
Total Nonfarm	748.9	757.5	760.0	11.1	2.5
Total Private	648.8	655.7	658.3	9.5	2.6
Goods-Producing	123.0	123.6	124.4	1.4	0.8
Natural Resources, Mining, & Construction	38.6	40.7	41.4	2.8	0.7
Manufacturing	84.4	82.9	83.0	-1.4	0.1
Durable Goods Manufacturing	57.8	56.9	57.0	-0.8	0.1
Computer & Electronic Product Manufacturing	4.4	4.3	4.3	-0.1	0.0
Electrical Equipment & Appliance Manufacturing	7.4	7.6	7.6	0.2	0.0
Transportation Equipment Manufacturing	19.9	19.4	19.5	-0.4	0.1
Nondurable Goods Manufacturing	26.6	26.0	26.0	-0.6	0.0
Service-Providing	625.9	633.9	635.6	9.7	1.7
Trade, Transportation, & Utilities	152.7	154.8	154.6	1.9	-0.2
Wholesale Trade	36.4	37.1	37.1	0.7	0.0
Retail Trade	85.5	86.0	86.1	0.6	0.1
Food & Beverage Stores	11.6	12.3	12.3	0.7	0.0
General Merchandise Stores	17.1	17.7	17.3	0.2	-0.4
Transportation, Warehousing, & Utilities	30.8	31.7	31.4	0.6	-0.3
Information	19.6	19.9	19.8	0.2	-0.1
Financial Activities	46.0	45.8	46.1	0.1	0.3
Finance & Insurance	35.1	35.0	35.2	0.1	0.2
Real Estate, Rental, & Leasing	10.9	10.8	10.9	0.0	0.1
Professional & Business Services	96.4	97.9	98.0	1.6	0.1
Professional, Scientific, & Technical Services	36.1	38.0	37.8	1.7	-0.2
Management of Companies & Enterprises	7.5	7.5	7.7	0.2	0.2
Administrative, Support, & Waste Management	52.8	52.4	52.5	-0.3	0.1
Educational & Health Services	103.9	105.5	105.9	2.0	0.4
Educational Services	23.3	23.2	23.9	0.6	0.7
Health Care & Social Assistance	80.6	82.3	82.0	1.4	-0.3
Hospitals	27.7	27.7	27.9	0.2	0.2
Leisure & Hospitality	77.1	76.7	78.1	1.0	1.4
Arts, Entertainment, & Recreation	9.8	9.4	10.0	0.2	0.6
Accommodation & Food Services	67.3	67.3	68.1	0.8	0.8
Accommodation	12.2	12.3	12.5	0.3	0.2
Food Services & Drinking Places	55.1	55.0	55.6	0.5	0.6
Other Services	30.1	31.5	31.4	1.3	-0.1
Government	100.1	101.8	101.7	1.6	-0.1
Federal Government	11.4	11.6	11.6	0.2	0.0
State Government	29.8	30.6	30.6	0.8	0.0
Local Government	58.9	59.6	59.5	0.6	-0.1

## Nonfarm Employment (Smaller MSAs)

	Clarksville, TN-KY MSA		Cleveland, TN MSA		Jackson, TN MSA	
	March 2007	April 2007	March 2007	April 2007	March 2007	April 2007
	Revised	Prelim.	Revised	Prelim.	Revised	Prelim.
Total Nonfarm	84,400	84,500	42,600	42,500	62,500	62,500
Total Private	66,100	66,200	37,200	37,400	50,500	50,600
Goods-Producing	17,100	16,900	11,300	11,400	14,400	14,500
Service-Providing	67,300	67,600	31,300	31,100	48,100	48,000
Private Service-Providing	49,000	49,300	25,900	26,000	36,100	36,100
Natural Resources/Construction	3,100	3,100	1,800	1,900	3,500	3,600
Manufacturing	14,000	13,800	9,500	9,500	10,900	10,900
Durable Goods	9,200	9,100	5,200	5,200	7,100	7,100
Nondurable Goods	4,800	4,700	4,300	4,300	3,800	3,800
Trade/Transportation/Utilities	16,100	16,200	7,700	7,700	13,000	12,900
Wholesale Trade	1,900	1,900	1,800	1,800	2,900	2,900
Retail Trade	11,500	11,600	4,700	4,700	7,600	7,500
General Merchandise Stores	3,600	3,400	NA	NA	NA	NA
Transportation/Warehousing/Utilities	2,700	2,700	1,200	1,200	2,500	2,500
Information	1,200	1,200	300	300	700	700
Financial Activities	2,700	2,700	1,700	1,700	1,900	1,900
Professional/Business Services	8,200	8,100	4,100	4,100	4,600	4,600
Educational/Health Services	9,400	9,500	5,700	5,700	8,400	8,400
Leisure/Hospitality	8,300	8,500	3,900	4,000	5,300	5,400
Other Services	3,100	3,100	2,500	2,500	2,200	2,200
Government	18,300	18,300	5,400	5,100	12,000	11,900
Federal Government	5,500	5,500	300	300	500	500
State Government	3,500	3,500	700	400	1,900	1,800
Local Government	9,300	9,300	4,400	4,400	9,600	9,600

	Johnson City, TN MSA		Kingsport/Bristol, TN-VA MSA		Morristown, TN MSA	
	March 2007	April 2007	March 2007	April 2007	March 2007	April 2007
	Revised	Prelim.	Revised	Prelim.	Revised	Prelim.
Total Nonfarm	81,400	82,000	123,300	123,400	51,700	51,900
Total Private	64,700	65,000	106,900	107,100	44,700	44,700
Goods-Producing	13,800	13,800	32,700	32,800	17,600	17,600
Service-Providing	67,600	68,200	90,600	90,600	34,100	34,300
Private Service-Providing	50,900	51,200	74,200	74,300	27,100	27,100
Natural Resources/Construction	3,500	3,500	8,000	8,000	2,100	2,200
Manufacturing	10,300	10,300	24,700	24,800	15,500	15,400
Durable Goods	NA	NA	11,600	11,600	10,300	10,200
Nondurable Goods	NA	NA	13,100	13,200	NA	NA
Trade/Transportation/Utilities	14,000	14,100	25,200	25,200	10,400	10,300
Wholesale Trade	3,000	3,000	5,400	5,400	2,100	2,100
Retail Trade	9,700	9,800	15,200	15,200	5,500	5,400
General Merchandise Stores	NA	NA	NA	NA	NA	NA
Transportation/Warehousing/Utilities	1,300	1,300	4,600	4,600	2,800	2,800
Information	2,300	2,300	2,500	2,500	700	700
Financial Activities	4,900	4,900	4,200	4,200	2,000	2,000
Professional/Business Services	7,400	7,600	8,700	8,800	3,600	3,600
Educational/Health Services	11,500	11,500	17,000	17,000	5,300	5,400
Leisure/Hospitality	8,200	8,200	12,300	12,300	3,400	3,400
Other Services	2,600	2,600	4,300	4,300	1,700	1,700
Government	16,700	17,000	16,400	16,300	7,000	7,200
Federal Government	2,300	2,300	1,200	1,200	400	400
State Government	6,400	6,600	2,300	2,300	1,300	1,500
Local Government	8,000	8,100	12,900	12,800	5,300	5,300

**Clarksville MSA** is Montgomery County, Stewart County, Christian County, KY, & Trigg County, KY. **Cleveland MSA** is Bradley & Polk counties. **Jackson MSA** is Chester & Madison counties. **Johnson City MSA** is Carter, Unicoi, & Washington counties. **Kingsport-Bristol MSA** is Hawkins County, Sullivan County, Scott County, VA, Washington County, VA, & Bristol City, VA. **Morristown MSA** is Grainger, Hamblen, & Jefferson counties.

Tennessee Department of Labor & Workforce Development  
 Employment Security Division, Research & Statistics  
 11th Floor, Davy Crockett Tower  
 500 James Robertson Parkway  
 Nashville, TN 37245

**FIRST CLASS MAIL  
 POSTAGE & FEES PAID  
 BUREAU OF  
 LABOR STATISTICS  
 PERMIT NO. G-738**

Phone: 615-741-2284  
 Fax: 615-532-9434  
 E-mail: wayne.meisels@state.tn.us



The Tennessee Department of Labor and Workforce Development is committed to principles of equal opportunity, equal access, and affirmative action. Auxiliary aids and services are available upon request to individuals with disabilities.  
 Tennessee Department of Labor and Workforce Development; Authorization 337607; This public document was promulgated for electronic use only.

We're on the Web  
[www.tennessee.gov/labor-wfd](http://www.tennessee.gov/labor-wfd)  
 Check out The Source at  
[www.tennessee.gov/labor-wfd/source](http://www.tennessee.gov/labor-wfd/source)



The Tennessee Department of Labor and Workforce Development is an equal opportunity employer/program. Auxiliary aids and services are available upon request. **TTY: 615-532-2879 or 1-800-848-0299**

**U.S. Consumer Price Index April 2007**

Group	Index	Percent Change	
		Yearly	Monthly
<b>U.S. City Average</b>			
All Items (1982-84=100) / All Urban Consumers	206.7	2.6	0.6
All Items (1982-84=100) / Wage Earners & Clerical Workers	202.1	2.5	0.8
<b>South</b>			
All Items (1982-84=100) / All Urban Consumers	199.6	2.5	0.9
All Items (1982-84=100) / Wage Earners & Clerical Workers	196.7	2.4	1.0

