



# The Labor Market Report

The Tennessee Department of Labor and Workforce Development

Phil Bredesen,  
Governor

James G. Neeley,  
Commissioner

August 2007 Data

## Special Points of Interest:

- The number and percentage of persons in each state that lack health insurance
- Tennessee Historical Civilian Labor Force Series, 1977 to Present
- County Unemployment Rates
- Civilian Labor Force Summary
- State Unemployment Insurance Activities

## Inside This Issue:

Chattanooga MSA	7
Knoxville MSA	8
Memphis MSA	9
Nashville MSA	10
Smaller MSAs	11
Consumer Price Index	12

## Persons Without Health Insurance Coverage, by State, 2004 to 2006

Recently, the U.S. Census Bureau released the report *Income, Poverty, and Health Insurance Coverage In the United States: 2006*. Some of the national and state health insurance findings are listed below with a table of state-by-state data on the next page.

The number of people without health insurance coverage rose from 44.8 million (15.3 percent) in 2005 to 47 million (15.8 percent) in 2006. In Tennessee, there were 791,000 uninsured citizens (13.4 percent). (See the table on Page 2.) *Editor's Note: According to the Governor's Office, this data does not reflect some of the uninsured who have been helped through the new state-sponsored Cover Tennessee program that was initiated in April 2007.*

### What is Health Coverage?

The Census Bureau classifies health insurance coverage as either private or government coverage. Private insurance is provided through an employer or

union or is purchased by the individual from a private company. Government coverage includes Medicare, Medicaid, military health insurance, the State Children's Health Insurance, and individual state health plans. Historically, research shows that health insurance coverage is, in fact, underreported.

This insurance data is collected through a survey in conjunction with The Annual Social and Economic Supplement to the Current Population Survey (CPS) about health care coverage. The questionnaire asks separate questions about the major types of health insurance coverage. Respondents who answer "no" to each of the coverage questions are then asked to verify that they were, in fact, not covered by any type of health insurance.

Most people (59.7 percent) were covered by a health insurance plan related to employment for some or all of 2006. The percentage of private coverage decreased from 68.5 percent in 2005 to 67.9

percent in 2006, while the number of people covered by private insurance was statistically unchanged at 201.7 million in 2006.

The number of people covered by government health programs was unchanged from 2005 at 80.3 million, while the percentage of those covered decreased from 27.3 percent in 2005 to 27 percent in 2006. Medicaid coverage (12.9 percent) and Medicare coverage (13.5 percent) were basically unchanged from 2005 to 2006. The actual number of people covered by both government programs was 38.3 million in 2005 and 40.3 million in 2006.

### State/Regional Information

Using the three-year average, the following table shows that Texas had the highest percentage of uninsured citizens at 24.1 percent. The percentage rates in Minnesota, Hawaii, Iowa, Wisconsin, and Maine were lower than the rates of the other 45 states and the District of Columbia. *(Continued on next page)*

## Percentage of People Without Health Insurance Coverage, by State, Using Three-Year Average: 2004 to 2006

State	Three-Year Average, 2004-2006		
	Number		Percent
	Estimate	C. I. (+/-)*	Estimate
<b>United States</b>	<b>45,102,000</b>	<b>358,000</b>	<b>15.3</b>
Alabama	636,000	44,000	14.1
Alaska	110,000	7,000	16.7
Arizona	1,151,000	62,000	19.0
Arkansas	482,000	30,000	17.5
California	6,663,000	151,000	18.5
Colorado	772,000	51,000	16.6
Connecticut	362,000	31,000	10.4
Delaware	106,000	8,000	12.5
District of Columbia	68,000	6,000	12.4
Florida	3,609,000	104,000	20.3
Georgia	1,594,000	69,000	17.6
Hawaii	108,000	10,000	8.6
Idaho	213,000	15,000	14.9
Illinois	1,715,000	75,000	13.6
Indiana	809,000	50,000	13.1
Iowa	271,000	25,000	9.3
Kansas	300,000	25,000	11.1
Kentucky	564,000	41,000	13.8
Louisiana	784,000	47,000	18.5
Maine	124,000	12,000	9.5
Maryland	755,000	50,000	13.5
Massachusetts	653,000	45,000	10.3
Michigan	1,061,000	59,000	10.6
Minnesota	439,000	38,000	8.5
Mississippi	520,000	32,000	18.1
Missouri	703,000	48,000	12.3
Montana	157,000	10,000	17.0
Nebraska	194,000	16,000	11.1
Nevada	451,000	29,000	18.3
New Hampshire	136,000	12,000	10.4
New Jersey	1,269,000	64,000	14.6
New Mexico	405,000	25,000	21.0
New York	2,513,000	92,000	13.2
North Carolina	1,383,000	66,000	16.0
North Dakota	69,000	6,000	11.1
Ohio	1,206,000	63,000	10.7
Oklahoma	650,000	40,000	18.7
Oregon	604,000	41,000	16.6
Pennsylvania	1,255,000	64,000	10.2
Rhode Island	107,000	10,000	10.2
South Carolina	667,000	45,000	16.0
South Dakota	88,000	7,000	11.6
<b>Tennessee</b>	<b>791,000</b>	<b>50,000</b>	<b>13.4</b>
Texas	5,501,000	134,000	24.1
Utah	392,000	24,000	15.7
Vermont	67,000	6,000	10.8
Virginia	981,000	55,000	13.2
Washington	778,000	51,000	12.5
West Virginia	279,000	18,000	15.5
Wisconsin	514,000	41,000	9.4
Wyoming	71,000	6,000	14.0

\*C.I.= confidence interval (90%). A measure of the estimate's variability.

Source: U.S. Census Bureau, Current Population Survey, 2005 to 2007 Annual Social and Economic Supplements

(Continued from Page 1)

Of those states that had an uninsured percentage of less than 10 percent, Minnesota was the lowest. Fifteen states had an insurance percentage that was higher than the nation's, while 29 states and the District of Columbia had a percentage that was lower than the United States' percentage. Tennessee was in this group.

As a region, the Midwest had the lowest percentage of citizens without health insurance with a rate of 11.3, followed by the Northeast at 12.3 percent, the West (17.9 percent), and the South with 19 percent. The South, along with the Northeast, experienced a percentage increase in the number of uninsured from 2005 to 2006.

### Uninsured Demographic Groups

The number of U.S.-born residents who were uninsured in 2005 was 33 million (12.8 percent). This increased in 2006 to 34.4 million uninsured (13.2 percent). The number of foreign-born residents increased from 11.8 to 12.6 million residents in 2006. This is 33.8 percent of the foreign-born population.

For African-Americans, the percentage of uninsured increased from 19 percent in 2005 to 20.5 percent in 2006.

The percentage of uninsured Hispanics increased from 32.3 percent in 2005 to 34.1 percent in 2006. The percentage of uninsured American Indian and Alaskan Natives remained the same at 31.4 percent over the three-year period.

The percentage of uninsured Asians decreased to 15.5 percent in 2006 from 17.2 percent in 2005.

# Statewide

## HISTORICAL CIVILIAN LABOR FORCE

## UNEMPLOYMENT RATES BY COUNTY\*

(NUMBERS IN THOUSANDS)

MONTHLY DATA NOT SEASONALLY ADJUSTED

Year and Month	Civilian Labor Force							Unemployed Number	Rate (%)
	Total	Employment	Employed						
			Total	Nonfarm Employment					
			**Manu- facturing	**Trade	**Services				
1977	1,939.0	1,816.7	1,648.1	507.5	357.2	254.5	122.3	6.3 %	
1978	1,983.7	1,866.2	1,737.0	526.0	379.1	270.7	117.5	5.9	
1979	2,040.5	1,918.5	1,777.3	524.7	388.7	285.4	122.0	6.0	
1980	2,071.6	1,920.1	1,746.6	502.1	379.7	291.0	151.5	7.3	
1981	2,123.1	1,927.6	1,775.4	506.9	379.9	304.4	195.5	9.2	
1982	2,141.2	1,891.5	1,703.0	466.7	380.5	313.1	249.7	11.7	
1983	2,188.2	1,932.4	1,719.0	468.6	389.9	323.4	255.8	11.7	
1984	2,233.5	2,026.4	1,812.0	497.1	413.3	344.3	207.1	9.3	
1985	2,255.7	2,070.0	1,867.8	492.4	435.3	360.2	185.7	8.2	
1986	2,291.3	2,110.7	1,929.8	490.5	452.1	384.7	180.6	7.9	
1987	2,324.1	2,166.5	2,011.6	497.4	477.2	408.9	157.6	6.8	
1988	2,333.6	2,197.2	2,092.1	511.9	495.6	440.3	136.4	5.8	
1989	2,364.9	2,241.3	2,167.2	524.5	508.4	467.2	123.6	5.2	
1990	2,401.1	2,269.0	2,193.2	493.4	379.1	611.0	132.1	5.5	
1991	2,425.4	2,266.0	2,183.6	480.3	373.0	626.7	159.4	6.6	
1992	2,479.5	2,316.7	2,245.0	492.8	374.1	664.8	162.8	6.6	
1993	2,543.3	2,391.6	2,328.5	502.8	382.5	709.8	151.7	6.0	
1994	2,645.7	2,511.1	2,423.0	513.8	398.4	751.4	134.6	5.1	
1995	2,718.0	2,574.0	2,498.9	518.0	412.6	795.0	144.0	5.3	
1996	2,758.4	2,611.0	2,533.3	501.5	420.9	814.3	147.4	5.3	
1997	2,788.3	2,640.0	2,584.0	498.0	430.5	849.7	148.3	5.3	
1998	2,811.7	2,685.2	2,638.4	498.6	437.1	875.7	126.5	4.5	
1999	2,838.7	2,722.1	2,685.3	494.7	443.6	900.8	116.6	4.1	
2000	2,871.5	2,756.5	2,728.9	488.1	447.5	930.9	115.0	4.0	
2001	2,859.7	2,728.5	2,688.3	454.2	446.6	921.5	131.2	4.6	
2002	2,883.4	2,733.7	2,664.4	428.5	438.7	938.0	149.7	5.2	
2003	2,892.0	2,727.5	2,667.5	414.1	440.8	950.3	164.5	5.7	
2004	2,897.0	2,739.0	2,706.1	411.8	447.5	978.7	158.1	5.5	
2005	2,909.6	2,747.6	2,743.1	408.8	454.6	1,005.6	161.9	5.6	
2006	2,990.2	2,835.5	2,783.1	400.1	460.6	1,030.4	154.6	5.2	
<b>2007</b>									
January	3,002.4	2,841.9	2,754.7	393.7	457.9	1,015.7	160.5	5.3 %	
February	3,004.6	2,845.4	2,761.6	392.1	456.0	1,019.7	159.2	5.3	
March	3,029.1	2,878.4	2,791.9	393.5	461.1	1,035.3	150.8	5.0	
April	3,004.1	2,881.1	2,806.6	393.6	462.4	1,044.9	123.0	4.1	
May	3,030.6	2,902.0	2,813.0	392.0	464.0	1,049.7	128.6	4.2	
June	3,066.0	2,929.9	2,811.0	392.4	464.0	1,057.6	136.1	4.4	
July (r)	3,066.9	2,937.8	2,792.3	387.9	464.1	1,056.1	129.1	4.2	
August (p)	3,047.0	2,922.3	2,820.0	388.7	465.8	1,062.0	124.7	4.1	
September									
October									
November									
December									

(r)=revised

\*\*These industries not comparable to industry employment data before

(p)=preliminary

1990 because of change to NAICS coding system.

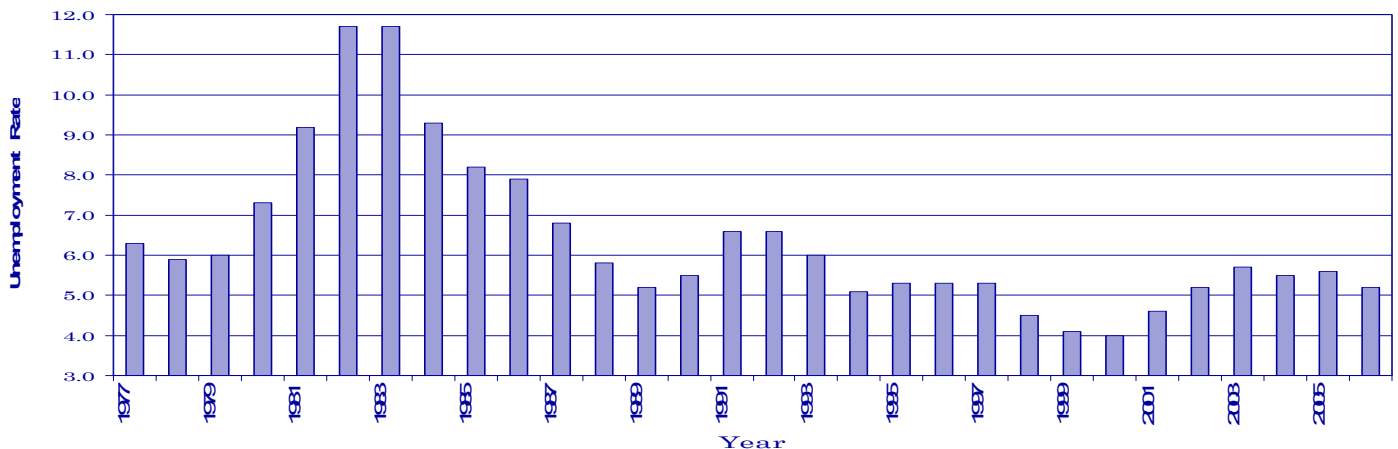
Trade = Wholesale and Retail Trade

Services = Professional/Business Services, Educational/Health Services, Leisure/Hospitality, and Other Services.

County	Aug	Aug	County	Aug	Aug
	2006	2007		2006	2007
Anderson	4.9	3.6	Lauderdale	8.4	5.7
Bedford	5.8	4.6	Lawrence	10.6	7.1
Benton	7.4	5.4	Lewis	7.3	6.7
Bledsoe	6.4	5.1	Lincoln	4.2	3.1
Blount	4.1	3.2	Loudon	4.8	3.3
Bradley	5.2	4.0	Macon	6.8	4.5
Campbell	6.0	4.6	Madison	5.7	4.1
Cannon	5.0	4.2	Marion	5.9	5.2
Carroll	6.2	5.3	Marshall	5.9	7.7
Carter	5.1	4.2	Maury	5.2	8.5
Cheatham	4.1	3.2	McMinn	6.0	4.5
Chester	5.9	5.1	McNairy	6.7	5.3
Claiborne	5.4	4.8	Meigs	6.8	5.4
Clay	9.5	6.7	Monroe	5.9	4.9
Cocke	6.8	4.9	Montgomery	5.1	4.0
Coffee	5.7	4.0	Moore	4.9	3.3
Crockett	6.7	5.1	Morgan	7.2	4.8
Cumberland	5.8	4.5	Obion	5.8	5.0
Davidson	4.5	3.4	Overton	6.9	6.9
Decatur	5.8	4.7	Perry	7.4	7.4
DeKalb	5.6	3.7	Pickett	7.5	6.1
Dickson	4.8	3.4	Polk	5.6	4.1
Dyer	5.6	4.2	Putnam	6.4	4.1
Fayette	5.7	5.4	Rhea	5.8	4.9
Fentress	6.0	5.6	Roane	5.7	3.7
Franklin	5.9	4.6	Robertson	4.4	3.9
Gibson	7.6	5.8	Rutherford	4.4	3.3
Giles	6.7	5.5	Scott	6.8	5.8
Grainger	5.5	4.2	Sequatchie	4.6	3.9
Greene	7.3	5.7	Sevier	4.2	3.1
Grundy	8.1	5.4	Shelby	6.1	4.4
Hamblen	5.8	4.0	Smith	4.9	3.9
Hamilton	4.8	3.6	Stewart	7.9	5.2
Hancock	7.0	5.2	Sullivan	4.7	3.5
Hardeman	7.0	5.8	Sumner	4.3	3.7
Hardin	6.2	4.5	Tipton	5.9	4.5
Hawkins	5.6	3.8	Trousdale	5.6	3.8
Haywood	9.6	7.3	Unicoi	5.8	4.3
Henderson	6.3	5.2	Union	4.5	3.5
Henry	7.1	5.4	Van Buren	7.6	5.1
Hickman	5.6	4.7	Warren	9.1	5.7
Houston	8.1	5.2	Washington	4.5	3.6
Humphreys	6.5	4.6	Wayne	9.9	6.4
Jackson	6.4	4.9	Weakley	8.4	7.0
Jefferson	5.6	4.0	White	8.8	5.1
Johnson	6.6	4.9	Williamson	3.6	3.7
Knox	4.1	3.1	Wilson	4.6	3.2
Lake	6.4	4.9			

\*Data Not Seasonally Adjusted

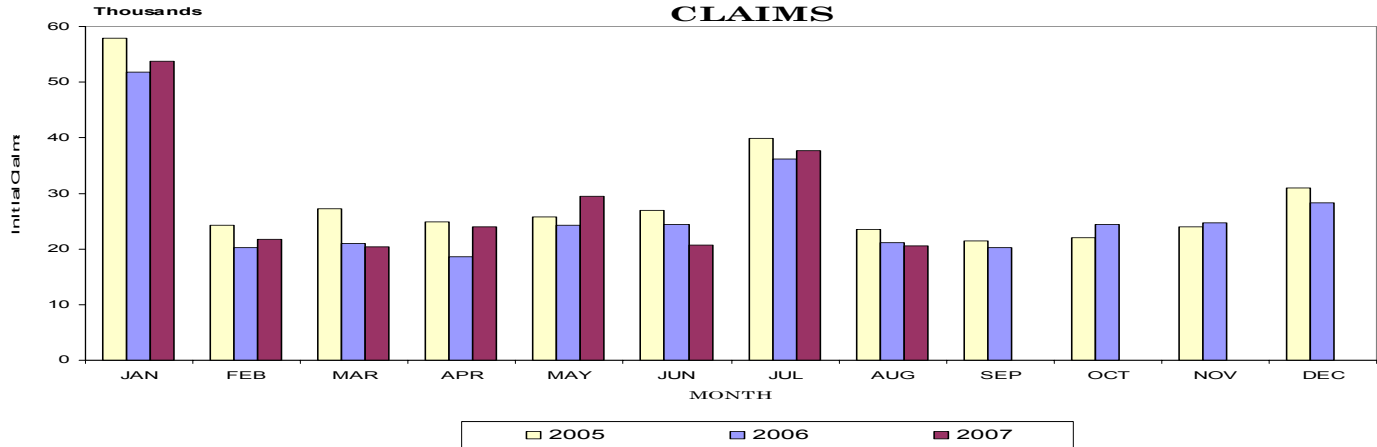
Unemployment Rates 1977-2006



# Statewide

## UNEMPLOYMENT INSURANCE ACTIVITIES

### MONTHLY INITIAL CLAIMS



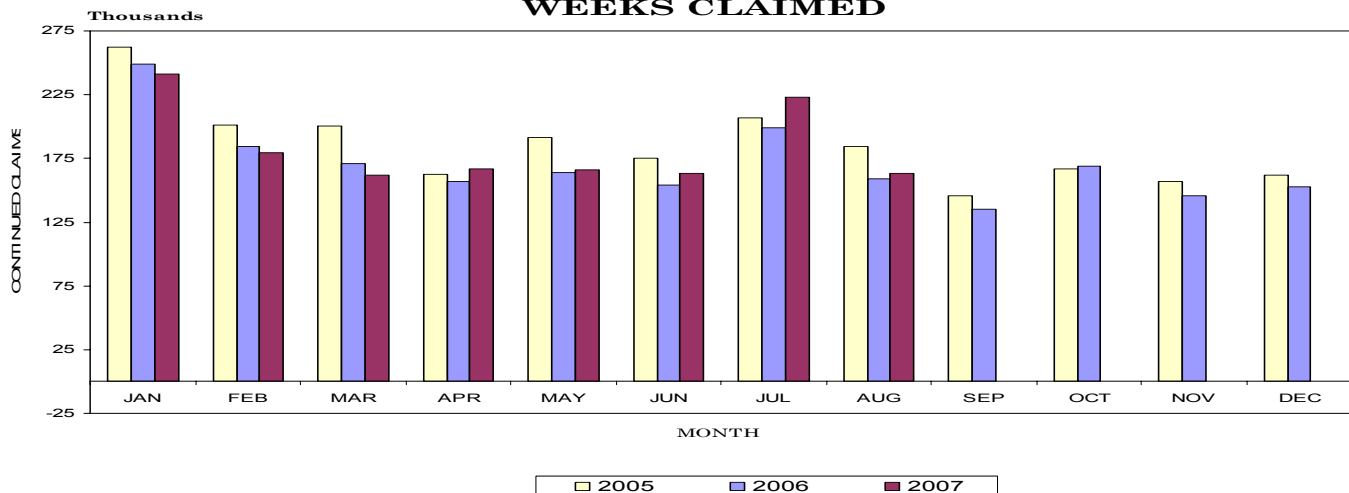
## BENEFIT PROGRAMS

STATE BENEFIT PROGRAM				FEDERAL BENEFIT PROGRAMS			
CLAIMS	Aug. 2006	July 2007	Aug. 2007	FORMER FEDERAL EMPLOYEES	Aug. 2006	July 2007	Aug. 2007
Initial Claims	21,175	37,644	20,505	Benefits Paid	\$332,966	\$329,140	\$265,409
Continued Weeks Claimed	159,279	223,170	163,510	Benefit Weeks Claimed	1,219	1,065	917
Nonmonetary Determinations	7,142	5,924	7,309	Initial Claims	69	102	68
Appeals Decisions	2,015	1,581	1,881	Continued Weeks Claimed	1,156	1,183	885
Lower Authority	1,727	1,302	1,647	Appeals Decisions	13	11	7
Higher Authority	288	279	234				
BENEFITS				FORMER MILITARY PERSONNEL			
Amount Paid	\$32,091,219	\$42,197,795	\$37,139,379	Benefits Paid	\$466,719	\$425,420	\$364,335
Benefit Weeks Paid	163,858	198,318	168,865	Benefit Weeks Claimed	1,751	1,371	1,363
Average Weekly Benefit Amount	\$214	\$219	\$223	Initial Claims	155	133	117
First Payments	10,291	15,374	9,998	Continued Weeks Claimed	1,700	1,507	1,293
Final Payments	4,128	4,567	4,064	Appeals Decisions	3	5	8
Average Weeks Duration	14	14	14				
Trust Fund Balance*	\$695,189,582	\$648,673,789	\$632,361,840				

\*Trust Fund includes a one-time deposit in March 2002 of \$162 million of Reed Act funds.

## CONTINUED WEEKS CLAIMED

### MONTHLY CONTINUED WEEKS CLAIMED



# Statewide

## ESTIMATED NONFARM EMPLOYMENT (in thousands)

Industry	August 2006	Revised July 2007	Preliminary August 2007	Net Change	
				Aug. 2006 Aug. 2007	July 2007 Aug. 2007
Total Nonfarm	2,799.9	2,792.3	<b>2,820.0</b>	20.1	27.7
Total Private	2,388.2	2,398.6	<b>2,408.0</b>	19.8	9.4
Goods-Producing	537.4	534.2	<b>535.0</b>	-2.4	0.8
Natural Resources & Mining	4.3	4.3	<b>4.3</b>	0.0	0.0
Construction	133.8	142.0	<b>142.0</b>	8.2	0.0
Manufacturing	399.3	387.9	<b>388.7</b>	-10.6	0.8
Durable Goods Manufacturing	250.6	243.5	<b>244.0</b>	-6.6	0.5
Wood Product Manufacturing	18.1	18.1	<b>18.0</b>	-0.1	-0.1
Nonmetallic Mineral Product Manufacturing	16.3	16.5	<b>16.7</b>	0.4	0.2
Primary Metal Manufacturing	11.5	10.9	<b>11.1</b>	-0.4	0.2
Fabricated Metal Product Manufacturing	44.0	44.8	<b>45.2</b>	1.2	0.4
Machinery Manufacturing	33.0	31.6	<b>30.7</b>	-2.3	-0.9
Computer & Electronic Product Manufacturing	9.2	8.0	<b>8.0</b>	-1.2	0.0
Electrical Equipment & Appliance Mfg.	23.1	23.4	<b>23.3</b>	0.2	-0.1
Transportation Equipment Manufacturing	62.8	59.4	<b>60.3</b>	-2.5	0.9
Motor Vehicle Parts Manufacturing	36.4	35.1	<b>35.9</b>	-0.5	0.8
Furniture & Related Product Manufacturing	17.7	16.5	<b>16.4</b>	-1.3	-0.1
Miscellaneous Manufacturing	14.9	14.3	<b>14.3</b>	-0.6	0.0
Nondurable Goods Manufacturing	148.7	144.4	<b>144.7</b>	-4.0	0.3
Textile Mills, Products, & Apparel	16.2	14.5	<b>14.5</b>	-1.7	0.0
Food Manufacturing	33.5	33.2	<b>33.2</b>	-0.3	0.0
Animal Slaughtering & Processing	11.5	11.6	<b>11.6</b>	0.1	0.0
Bakeries & Tortilla Manufacturing	7.5	7.2	<b>7.2</b>	-0.3	0.0
Beverage & Tobacco Product Manufacturing	5.4	4.9	<b>4.9</b>	-0.5	0.0
Paper Manufacturing	18.7	18.3	<b>18.4</b>	-0.3	0.1
Printing & Related Support Activities	17.9	17.1	<b>17.2</b>	-0.7	0.1
Chemical Manufacturing	25.9	25.1	<b>25.0</b>	-0.9	-0.1
Plastics & Rubber Products Manufacturing	28.9	29.0	<b>29.2</b>	0.3	0.2
Plastics Product Manufacturing	15.3	15.4	<b>15.5</b>	0.2	0.1
Rubber Product Manufacturing	13.6	13.6	<b>13.7</b>	0.1	0.1
Service-Providing	2,262.5	2,258.1	<b>2,285.0</b>	22.5	26.9
Trade, Transportation, & Utilities	608.3	611.4	<b>614.0</b>	5.7	2.6
Wholesale Trade	133.4	135.3	<b>135.7</b>	2.3	0.4
Merchant Wholesalers, Durable Goods	69.4	70.7	<b>70.9</b>	1.5	0.2
Merchant Wholesalers, Nondurable Goods	46.8	47.0	<b>47.0</b>	0.2	0.0
Wholesale Electronic Markets	17.2	17.6	<b>17.8</b>	0.6	0.2
Retail Trade	327.3	328.8	<b>330.1</b>	2.8	1.3
Motor Vehicle & Parts Dealers	44.2	44.4	<b>44.5</b>	0.3	0.1
Furniture & Home Furnishings Stores	10.3	10.0	<b>10.2</b>	-0.1	0.2
Building Material, Garden Equipment/Supplies	28.2	30.7	<b>30.4</b>	2.2	-0.3
Food & Beverage Stores	46.9	47.2	<b>47.6</b>	0.7	0.4
Health & Personal Care Stores	22.5	23.0	<b>23.1</b>	0.6	0.1
Gasoline Stations	24.4	24.3	<b>24.3</b>	-0.1	0.0
Clothing & Clothing Accessories Stores	29.4	27.6	<b>27.8</b>	-1.6	0.2
Sporting Goods, Hobby, Book, & Music Stores	12.6	12.2	<b>12.5</b>	-0.1	0.3
General Merchandise Stores	70.7	71.5	<b>71.8</b>	1.1	0.3
Miscellaneous Store Retailers	18.1	17.8	<b>17.7</b>	-0.4	-0.1
Nonstore Retailers	11.0	11.1	<b>11.3</b>	0.3	0.2
Transportation, Warehousing, & Utilities	147.6	147.3	<b>148.2</b>	0.6	0.9
Utilities	3.5	3.3	<b>3.4</b>	-0.1	0.1
Transportation & Warehousing	144.1	144.0	<b>144.8</b>	0.7	0.8
Truck Transportation	65.1	64.9	<b>64.7</b>	-0.4	-0.2
Information	50.4	51.8	<b>51.8</b>	1.4	0.0
Publishing Industries (except internet)	14.2	14.4	<b>14.1</b>	-0.1	-0.3
Telecommunications	16.4	17.1	<b>17.4</b>	1.0	0.3
Financial Activities	145.0	145.1	<b>145.2</b>	0.2	0.1
Finance & Insurance	107.8	107.5	<b>107.4</b>	-0.4	-0.1
Real Estate, Rental, & Leasing	37.2	37.6	<b>37.8</b>	0.6	0.2
Professional & Business Services	323.5	317.4	<b>322.8</b>	-0.7	5.4
Professional, Scientific, & Technical Services	106.9	106.0	<b>106.6</b>	-0.3	0.6
Management of Companies & Enterprises	23.9	24.0	<b>23.8</b>	-0.1	-0.2
Administrative, Support, & Waste Management	192.7	187.4	<b>192.4</b>	-0.3	5.0
Educational & Health Services	340.2	346.2	<b>347.0</b>	6.8	0.8
Educational Services	43.8	44.5	<b>44.8</b>	1.0	0.3
Health Care & Social Assistance	296.4	301.7	<b>302.2</b>	5.8	0.5
Ambulatory Health Care Services	110.6	113.1	<b>113.7</b>	3.1	0.6
Hospitals	91.1	92.1	<b>91.6</b>	0.5	-0.5
Nursing & Residential Care Facilities	53.0	53.9	<b>54.2</b>	1.2	0.3
Social Assistance	41.7	42.6	<b>42.7</b>	1.0	0.1
Leisure & Hospitality	281.6	289.5	<b>289.7</b>	8.1	0.2
Arts, Entertainment, & Recreation	34.9	37.0	<b>36.4</b>	1.5	-0.6
Accommodation & Food Services	246.7	252.5	<b>253.3</b>	6.6	0.8
Accommodation	37.0	37.7	<b>37.6</b>	0.6	-0.1
Food Services & Drinking Places	209.7	214.8	<b>215.7</b>	6.0	0.9
Other Services	101.8	103.0	<b>102.5</b>	0.7	-0.5
Repair & Maintenance	22.3	22.3	<b>22.4</b>	0.1	0.1
Personal & Laundry Services	25.0	25.5	<b>25.6</b>	0.6	0.1
Government	411.7	393.7	<b>412.0</b>	0.3	18.3
Federal Government	49.1	48.7	<b>49.0</b>	-0.1	0.3
State Government	93.5	93.2	<b>93.4</b>	-0.1	0.2
State Government Educational Services	45.3	44.8	<b>45.3</b>	0.0	0.5
Local Government	269.1	251.8	<b>269.6</b>	0.5	17.8
Local Government Educational Services	130.4	124.1	<b>134.1</b>	3.7	10.0

## HOURS AND EARNINGS OF PRODUCTION WORKERS

### AVERAGE WEEKLY EARNINGS

Industry	Aug. 2006	July 2007	Aug. 2007
Manufacturing	\$553.40	\$549.02	\$563.58
Durable Goods Manufacturing	\$536.06	\$525.53	\$542.93
Fabricated Metal Product Manufacturing	\$602.47	\$617.40	\$623.70
Machinery Manufacturing	\$558.25	\$596.20	\$609.23
Nondurable Goods Manufacturing	\$584.35	\$591.19	\$599.66
Food Manufacturing	\$432.18	\$442.15	\$412.30

### AVERAGE WEEKLY HOURS

Industry	Aug. 2006	July 2007	Aug. 2007
Manufacturing	39.5	39.3	40.4
Durable Goods Manufacturing	39.1	38.5	39.4
Fabricated Metal Product Manufacturing	39.3	40.3	40.5
Machinery Manufacturing	40.6	42.8	43.3
Nondurable Goods Manufacturing	40.3	40.8	42.2
Food Manufacturing	35.6	35.4	35.3

### AVERAGE HOURLY EARNINGS

Industry	Aug. 2006	July 2007	Aug. 2007
Manufacturing	\$14.01	\$13.97	\$13.95
Durable Goods Manufacturing	\$13.71	\$13.65	\$13.78
Fabricated Metal Product Manufacturing	\$15.33	\$15.32	\$15.40
Machinery Manufacturing	\$13.75	\$13.93	\$14.07
Nondurable Goods Manufacturing	\$14.50	\$14.49	\$14.21
Food Manufacturing	\$12.14	\$12.49	\$11.68

## NONFARM EMPLOYMENT AND LABOR FORCE IN TENNESSEE

Tennessee's seasonally adjusted estimated unemployment rate for August 2007 was 4 percent, down 0.2 percent from the July 2007 rate. This is the fourth of the last five months that the current rate is less than the national average.

The United States' unemployment rate was 4.6 percent in August 2007. In August 2006, the national unemployment rate was 4.7 percent, and the state's unemployment rate was 5.2 percent.

Across Tennessee, the unemployment rate decreased in 65 counties, increased in 17 counties, and remained the same in 13 counties. The lowest rate occurred in Knox County at 3.1 percent, up 0.1 percent from the previous month. The highest rate was Maury County's 8.5 percent, down from 8.6 percent in July 2007.

(Continued on Page 6)



# CIVILIAN LABOR FORCE

## CIVILIAN LABOR FORCE SUMMARY

August 2006				July 2007				August 2007				
Labor Force	Employment	Unemployed	Rate	Labor Force	Employment	Unemployed	Rate	Labor Force	Employment	Unemployed	Rate	
<b>Seasonally Adjusted</b>												
U.S.	151,734,000	144,618,000	7,116,000	4.7	153,231,000	146,110,000	7,121,000	4.6	152,891,000	145,794,000	7,097,000	4.6
TENNESSEE	3,007,200	2,850,600	156,600	5.2	3,023,100	2,900,000	123,100	4.1	3,029,900	2,907,700	122,200	4.0
<b>Not Seasonally Adjusted</b>												
U.S.	151,734,000	144,618,000	7,116,000	4.7	153,231,000	146,110,000	7,121,000	4.6	152,891,000	145,794,000	7,097,000	4.6
TENNESSEE	3,007,200	2,850,600	156,600	5.2	3,023,100	2,900,000	123,100	4.1	3,029,900	2,907,700	122,200	4.0
<b>Metropolitan Statistical Areas</b>												
Chattanooga	261,610	249,730	11,890	4.5	267,000	256,850	10,140	3.8	265,750	256,070	9,670	3.6
Clarksville	107,780	101,830	5,960	5.5	108,600	102,910	5,700	5.2	108,270	103,020	5,250	4.8
Cleveland	55,670	52,750	2,920	5.2	55,640	53,470	2,160	3.9	56,020	53,780	2,240	4.0
Jackson	55,450	52,290	3,160	5.7	57,550	55,010	2,540	4.4	56,750	54,350	2,400	4.2
Johnson City	97,390	92,710	4,690	4.8	99,160	95,360	3,810	3.8	99,580	95,760	3,820	3.8
Kingsport-Bristol	145,600	138,800	6,790	4.7	146,990	140,890	6,100	4.1	146,790	141,220	5,570	3.8
Knoxville	351,260	336,420	14,830	4.2	361,480	350,110	11,370	3.1	357,110	345,840	11,270	3.2
Memphis	613,560	577,490	36,060	5.9	629,020	599,010	30,010	4.8	620,670	592,350	28,320	4.6
Morristown	64,660	60,980	3,680	5.7	65,530	62,720	2,810	4.3	65,000	62,360	2,640	4.1
Nashville	777,070	742,630	34,440	4.4	799,210	771,720	27,490	3.4	792,110	764,560	27,540	3.5
<b>Micropolitan Statistical Areas</b>												
Athens	24,960	23,450	1,510	6.0	24,620	23,470	1,150	4.7	24,530	23,420	1,110	4.5
Brownsville	9,620	8,700	920	9.6	9,520	8,760	760	7.9	9,430	8,740	690	7.3
Columbia	36,790	34,880	1,910	5.2	36,000	32,890	3,110	8.6	36,130	33,060	3,060	8.5
Cookeville	50,300	47,030	3,270	6.5	49,970	47,510	2,470	4.9	50,190	47,790	2,400	4.8
Crossville	23,150	21,820	1,340	5.8	22,810	21,810	1,000	4.4	22,820	21,800	1,020	4.5
Dyersburg	17,440	16,470	970	5.6	17,250	16,490	760	4.4	17,340	16,610	730	4.2
Greeneville	32,850	30,460	2,390	7.3	32,300	30,180	2,120	6.6	31,950	30,120	1,830	5.7
Harriman	26,920	25,390	1,540	5.7	27,310	26,260	1,050	3.8	27,040	26,050	990	3.7
Humboldt	21,100	19,510	1,590	7.6	21,340	20,050	1,300	6.1	21,220	19,990	1,230	5.8
LaFollette	17,100	16,070	1,020	6.0	17,040	16,260	790	4.6	17,050	16,270	790	4.6
Lawrenceburg	16,990	15,190	1,790	10.6	16,410	15,110	1,310	8.0	16,440	15,260	1,180	7.1
Lewisburg	12,700	11,950	750	5.9	12,620	11,650	970	7.7	12,700	11,720	980	7.7
Martin	15,760	14,430	1,330	8.4	15,950	14,650	1,300	8.1	15,970	14,840	1,120	7.0
McMinnville	17,960	16,330	1,630	9.1	17,080	16,060	1,020	6.0	17,080	16,110	970	5.7
Newport	16,320	15,210	1,110	6.8	16,410	15,560	840	5.1	16,320	15,520	800	4.9
Paris	14,190	13,190	1,010	7.1	13,950	13,180	770	5.5	14,120	13,350	770	5.4
Sevierville	48,870	46,820	2,050	4.2	50,980	49,410	1,570	3.1	50,050	48,500	1,540	3.1
Shelbyville	22,340	21,050	1,290	5.8	22,540	21,450	1,100	4.9	22,410	21,380	1,030	4.6
Tullahoma	48,510	45,720	2,780	5.7	48,990	46,950	2,040	4.2	48,810	46,760	2,060	4.2
Union City	18,460	17,370	1,090	5.9	18,980	17,900	1,080	5.7	18,980	17,960	1,030	5.4

(Continued from Page 5) Total nonfarm employment increased by 20,100 jobs from August 2006 to August 2007. During this period, there were increases in construction (up 8,200 jobs); accommodation/food services (up 6,600 jobs), which includes an increase of 6,000 jobs in food services/drinking places; health care/social assistance (up 5,800 jobs), which includes an increase of 3,100 jobs in ambulatory health care services and 1,200 in nursing/residential care facilities; local government educational services (up 3,700 jobs); retail trade (up 2,800 jobs), which includes an increase of 2,200 jobs in building

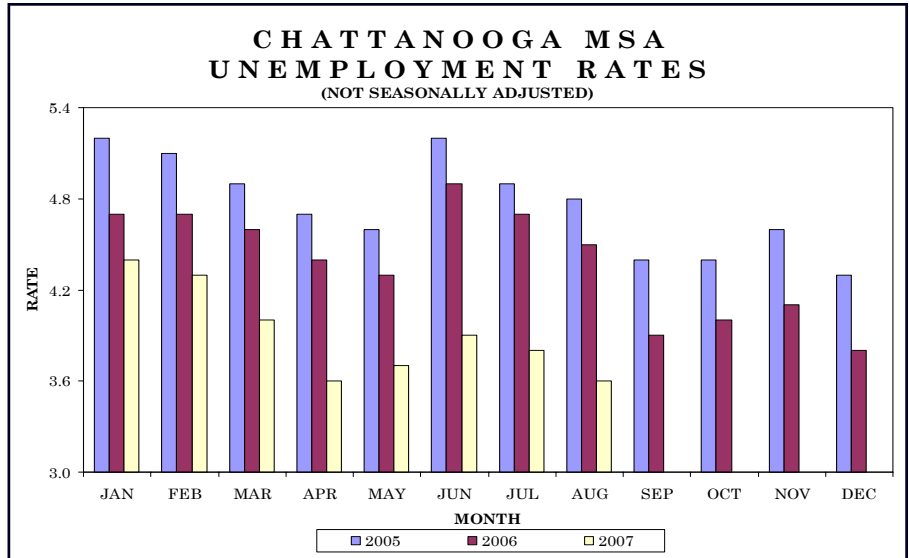
material/garden equipment/supplies and 1,100 in general merchandise stores; wholesale trade (up 2,300 jobs), which includes an increase of 1,500 jobs in durable goods merchant wholesalers; and information (up 1,400 jobs), which includes an increase of 1,000 jobs in telecommunications. This was partially offset by declines of 2,500 jobs in transportation equipment manufacturing; 2,300 jobs in machinery manufacturing; 1,700 jobs in both textile mills/products/apparel; and 1,600 jobs in clothing/clothing accessories stores.

During August, nonfarm employment increased by 27,700 jobs. There were seasonal increases in local government (up 17,800 jobs), which includes an increase of 10,000 jobs in local government educational services; professional/business services (up 5,400 jobs), which includes an upturn of 5,000 jobs in administrative/support/waste management; and retail trade (up 1,300 jobs).

The data from all the nonfarm employment estimates tables includes all full- and part-time nonfarm wage and salary employees who worked during or received pay for any part of the pay period that includes the 12th of the month. This is a count of jobs by place of work. Agricultural workers, proprietors, self-employed persons, workers in private households, and unpaid family workers are excluded. These numbers may not add due to rounding. Data is based on the 2006 benchmark.

Total nonfarm employment increased by 3,000 jobs from July to August. There were seasonal increases in local government (up 1,700 jobs), leisure/hospitality (up 1,000 jobs), and natural resources/mining/construction (up 200 jobs).

During the past 12 months, nonfarm employment increased by 2,300 jobs. During that time, goods-producing jobs remained the same, and service-providing jobs increased by 2,300.



## HOURS AND EARNINGS OF PRODUCTION WORKERS

## CHATTANOOGA MSA

Industry	Average Weekly Earnings			Average Weekly Hours			Average Hourly Earnings		
	Aug. 2006	July 2007	Aug. 2007	Aug. 2006	July 2007	Aug. 2007	Aug. 2006	July 2007	Aug. 2007
Manufacturing	\$530.40	\$545.65	\$540.47	40.8	42.2	41.8	\$13.00	\$12.93	\$12.93
Durable Goods Manufacturing	\$565.15	\$593.30	\$594.38	40.6	42.5	42.7	\$13.92	\$13.96	\$13.92
Nondurable Goods Manufacturing	\$492.82	\$504.48	\$495.67	41.0	41.9	41.1	\$12.02	\$12.04	\$12.06

## ESTIMATED NONFARM EMPLOYMENT (in thousands)

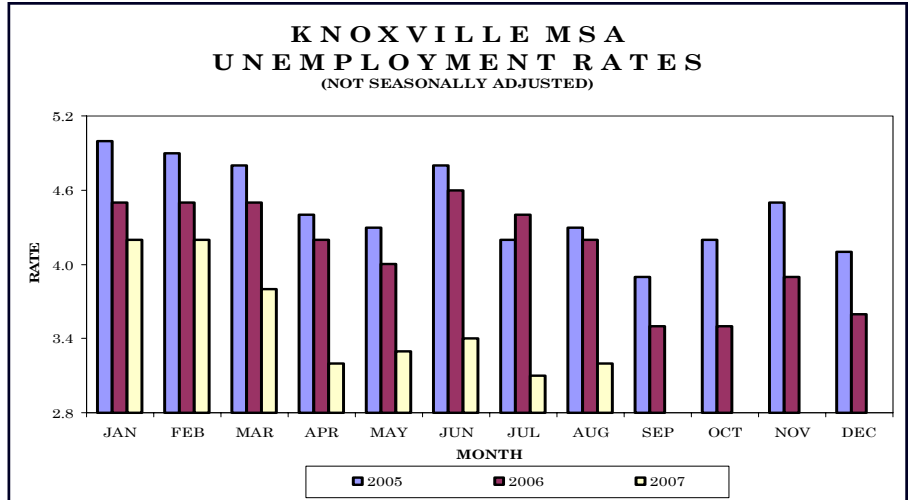
Industry	August 2006	Revised July 2007	Preliminary August 2007	Net Change	
				Aug. 2006 - Aug. 2007	July 2007 - Aug. 2007
Total Nonfarm	247.8	247.1	<b>250.1</b>	2.3	3.0
Total Private	213.3	213.9	<b>215.3</b>	2.0	1.4
Goods-Producing	47.2	47.1	<b>47.2</b>	0.0	0.1
Natural Resources, Mining, & Construction	11.7	11.6	<b>11.8</b>	0.1	0.2
Manufacturing	35.5	35.5	<b>35.4</b>	-0.1	-0.1
Durable Goods Manufacturing	16.6	16.6	<b>16.5</b>	-0.1	-0.1
Nondurable Goods Manufacturing	18.9	18.9	<b>18.9</b>	0.0	0.0
Textile Mills	4.4	4.3	<b>4.3</b>	-0.1	0.0
Service-Providing	200.6	200.0	<b>202.9</b>	2.3	2.9
Trade, Transportation, & Utilities	56.5	56.3	<b>56.3</b>	-0.2	0.0
Wholesale Trade	8.9	8.8	<b>8.7</b>	-0.2	-0.1
Retail Trade	26.5	26.6	<b>26.7</b>	0.2	0.1
General Merchandise Stores	6.5	6.6	<b>6.7</b>	0.2	0.1
Transportation, Warehousing, & Utilities	21.1	20.9	<b>20.9</b>	-0.2	0.0
Information	3.4	3.7	<b>3.8</b>	0.4	0.1
Financial Activities	18.7	19.0	<b>19.1</b>	0.4	0.1
Professional & Business Services	27.4	27.7	<b>27.7</b>	0.3	0.0
Educational & Health Services	25.3	25.2	<b>25.3</b>	0.0	0.1
Leisure & Hospitality	23.9	24.0	<b>25.0</b>	1.1	1.0
Accommodation & Food Services	20.8	21.1	<b>21.1</b>	0.3	0.0
Other Services	10.9	10.9	<b>10.9</b>	0.0	0.0
Government	34.5	33.2	<b>34.8</b>	0.3	1.6
Federal Government	6.3	6.4	<b>6.3</b>	0.0	-0.1
State Government	5.7	5.8	<b>5.8</b>	0.1	0.0
Local Government	22.5	21.0	<b>22.7</b>	0.2	1.7



# Knoxville MSA - Anderson, Blount, Knox, Loudon, Union

Total nonfarm employment increased by 1,900 jobs from July to August. There were seasonal increases in local government (up 700 jobs), retail trade (up 400 jobs), and professional/business services, education/health services, and leisure/hospitality (each up 200 jobs).

During the past 12 months, nonfarm employment increased by 2,700 jobs. During that time, goods-producing jobs increased by 1,000, while service-providing jobs increased by 1,700.



## HOURS AND EARNINGS OF PRODUCTION WORKERS

## KNOXVILLE MSA

Industry	Average Weekly Earnings			Average Weekly Hours			Average Hourly Earnings		
	Aug. 2006	July 2007	Aug. 2007	Aug. 2006	July 2007	Aug. 2007	Aug. 2006	July 2007	Aug. 2007
Manufacturing	\$633.58	\$634.85	\$637.72	39.5	38.9	39.1	\$16.04	\$16.32	\$16.31
Durable Goods Manufacturing	\$700.15	\$681.91	\$680.31	40.1	37.8	37.9	\$17.46	\$18.04	\$17.95
Nondurable Goods Manufacturing	\$478.92	\$535.72	\$544.54	38.1	41.4	41.6	\$12.57	\$12.94	\$13.09

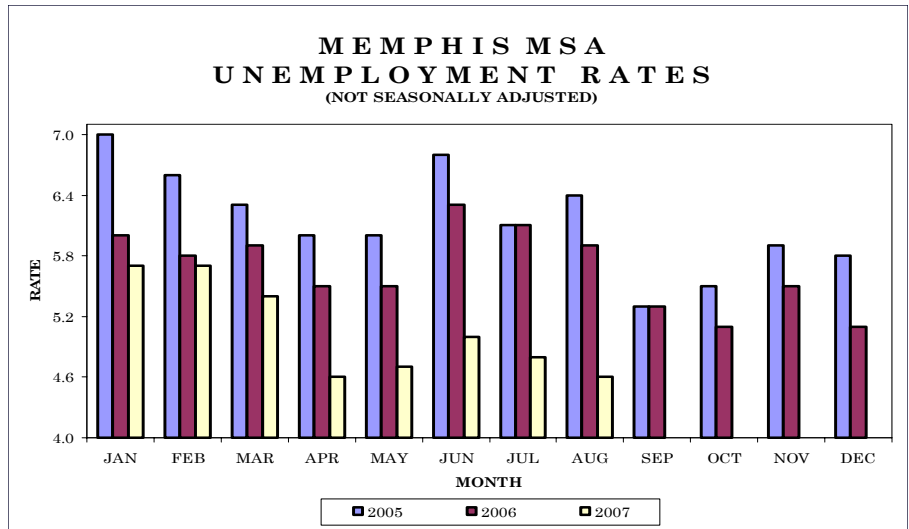
## ESTIMATED NONFARM EMPLOYMENT (in thousands)

Industry	August 2006	Revised	Preliminary	Net Change	
		July 2007	August 2007	Aug. 2006	July 2007
Total Nonfarm	334.5	335.3	<b>337.2</b>	2.7	1.9
Total Private	283.6	285.1	<b>286.3</b>	2.7	1.2
Goods-Producing	57.2	58.0	<b>58.2</b>	1.0	0.2
Natural Resources, Mining, & Construction	18.6	19.4	<b>19.5</b>	0.9	0.1
Manufacturing	38.6	38.6	<b>38.7</b>	0.1	0.1
Durable Goods Manufacturing	28.8	28.7	<b>28.8</b>	0.0	0.1
Fabricated Metal Product Manufacturing	8.6	8.7	<b>8.7</b>	0.1	0.0
Transportation Equipment Manufacturing	8.7	8.6	<b>8.6</b>	-0.1	0.0
Nondurable Goods Manufacturing	9.8	9.9	<b>9.9</b>	0.1	0.0
Service-Providing	277.3	277.3	<b>279.0</b>	1.7	1.7
Trade, Transportation, & Utilities	71.6	72.2	<b>72.6</b>	1.0	0.4
Wholesale Trade	16.0	16.1	<b>16.0</b>	0.0	-0.1
Retail Trade	44.3	44.9	<b>45.3</b>	1.0	0.4
Food & Beverage Stores	6.6	6.7	<b>6.7</b>	0.1	0.0
General Merchandise Stores	8.6	8.8	<b>8.7</b>	0.1	-0.1
Transportation, Warehousing, & Utilities	11.3	11.2	<b>11.3</b>	0.0	0.1
Information	6.2	6.0	<b>6.1</b>	-0.1	0.1
Financial Activities	17.5	17.6	<b>17.5</b>	0.0	-0.1
Professional & Business Services	39.6	39.5	<b>39.7</b>	0.1	0.2
Administrative, Support, & Waste Management	19.6	19.7	<b>19.8</b>	0.2	0.1
Educational & Health Services	41.0	41.1	<b>41.3</b>	0.3	0.2
Leisure & Hospitality	36.4	36.4	<b>36.6</b>	0.2	0.2
Accommodation & Food Services	32.7	32.6	<b>32.7</b>	0.0	0.1
Food Services & Drinking Places	29.7	29.8	<b>29.8</b>	0.1	0.0
Other Services	14.1	14.3	<b>14.3</b>	0.2	0.0
Government	50.9	50.2	<b>50.9</b>	0.0	0.7
Federal Government	5.1	4.9	<b>4.9</b>	-0.2	0.0
State Government	18.3	18.5	<b>18.5</b>	0.2	0.0
Local Government	27.5	26.8	<b>27.5</b>	0.0	0.7



Total nonfarm employment increased by 3,500 jobs from July to August. There were seasonal increases in local government (up 4,000 jobs), administrative/support/waste management (up 900 jobs), and warehousing/storage (up 200 jobs). This was partially offset by declines in durable goods manufacturing (down 700 jobs), retail trade and food services/drinking places (both down 300 jobs), and natural resources/mining/construction and other services (both down 200 jobs).

During the past 12 months, nonfarm employment increased by 6,700 jobs. During that time, goods-producing jobs decreased by 1,200, and service-providing jobs increased by 7,900.



**HOURS AND EARNINGS OF PRODUCTION WORKERS MEMPHIS MSA**

Industry	Average Weekly Earnings			Average Weekly Hours			Average Hourly Earnings		
	Aug. 2006	July 2007	Aug. 2007	Aug. 2006	July 2007	Aug. 2007	Aug. 2006	July 2007	Aug. 2007
Manufacturing	\$615.83	\$644.79	\$673.85	42.5	42.9	44.1	\$14.49	\$15.03	\$15.28
Durable Goods Manufacturing	\$521.59	\$533.52	\$564.19	39.1	38.3	39.9	\$13.34	\$13.93	\$14.14
Nondurable Goods Manufacturing	\$710.53	\$753.19	\$777.78	45.9	47.4	48.1	\$15.48	\$15.89	\$16.17

**ESTIMATED NONFARM EMPLOYMENT (in thousands)**

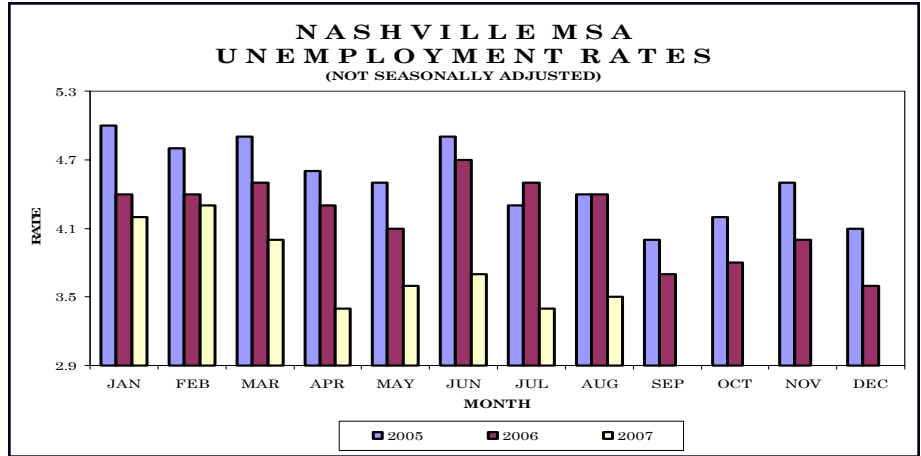
Industry	August 2006	Revised	Preliminary	Net Change	
		July 2007	August 2007	Aug. 2006	July 2007
	2006	2007	2007	Aug. 2007	Aug. 2007
Total Nonfarm	639.3	642.5	<b>646.0</b>	6.7	3.5
Total Private	553.1	560.7	<b>560.0</b>	6.9	-0.7
Goods-Producing	83.7	83.4	<b>82.5</b>	-1.2	-0.9
Natural Resources, Mining, & Construction	28.5	28.9	<b>28.7</b>	0.2	-0.2
Manufacturing	55.2	54.5	<b>53.8</b>	-1.4	-0.7
Durable Goods Manufacturing	27.4	27.3	<b>26.6</b>	-0.8	-0.7
Nondurable Goods Manufacturing	27.8	27.2	<b>27.2</b>	-0.6	0.0
Service-Providing	555.6	559.1	<b>563.5</b>	7.9	4.4
Trade, Transportation, & Utilities	174.2	176.3	<b>176.0</b>	1.8	-0.3
Wholesale Trade	38.0	38.2	<b>38.1</b>	0.1	-0.1
Retail Trade	72.2	73.8	<b>73.5</b>	1.3	-0.3
Food & Beverage Stores	9.5	9.4	<b>9.4</b>	-0.1	0.0
General Merchandise Stores	13.7	14.0	<b>13.9</b>	0.2	-0.1
Transportation, Warehousing, & Utilities	64.0	64.3	<b>64.4</b>	0.4	0.1
Truck Transportation	16.0	16.1	<b>16.0</b>	0.0	-0.1
Warehousing & Storage	7.8	8.3	<b>8.5</b>	0.7	0.2
Information	7.5	7.4	<b>7.3</b>	-0.2	-0.1
Financial Activities	32.8	32.7	<b>32.6</b>	-0.2	-0.1
Professional & Business Services	82.0	82.5	<b>83.4</b>	1.4	0.9
Professional, Scientific, & Technical Services	19.8	19.6	<b>19.7</b>	-0.1	0.1
Management of Companies & Enterprises	4.7	4.7	<b>4.6</b>	-0.1	-0.1
Administrative, Support, & Waste Management	57.5	58.2	<b>59.1</b>	1.6	0.9
Educational & Health Services	75.5	78.1	<b>78.1</b>	2.6	0.0
Health Care & Social Assistance	65.5	66.7	<b>66.6</b>	1.1	-0.1
Hospitals	24.7	25.6	<b>25.7</b>	1.0	0.1
Leisure & Hospitality	72.8	75.2	<b>75.2</b>	2.4	0.0
Accommodation & Food Services	64.7	67.0	<b>66.7</b>	2.0	-0.3
Food Services & Drinking Places	45.4	47.0	<b>46.7</b>	1.3	-0.3
Other Services	24.6	25.1	<b>24.9</b>	0.3	-0.2
Government	86.2	81.8	<b>86.0</b>	-0.2	4.2
Federal Government	14.7	14.4	<b>14.5</b>	-0.2	0.1
State Government	14.7	15.0	<b>15.1</b>	0.4	0.1
Local Government	56.8	52.4	<b>56.4</b>	-0.4	4.0



**Nashville MSA** — Cannon, Cheatham, Davidson, Dickson, Hickman, Macon, Robertson, Rutherford, Smith, Sumner, Trousdale, Williamson, Wilson

Total nonfarm employment increased by 6,200 jobs from July to August. There were seasonal increases in local government (up 5,200 jobs), administrative/support/waste management (up 800 jobs), retail trade (up 300 jobs), and wholesale trade and state government (both up 200 jobs).

This was partially offset by declines of 200 jobs in food services/drinking places and durable goods manufacturing.



**HOURS AND EARNINGS OF PRODUCTION WORKERS NASHVILLE MSA**

Industry	Average Weekly Earnings			Average Weekly Hours			Average Hourly Earnings		
	Aug. 2006	July 2007	Aug. 2007	Aug. 2006	July 2007	Aug. 2007	Aug. 2006	July 2007	Aug. 2007
Manufacturing	\$590.27	\$599.30	\$608.02	40.1	39.9	40.4	\$14.72	\$15.02	\$15.05
Durable Goods Manufacturing	\$607.10	\$625.97	\$630.44	40.8	40.7	40.7	\$14.88	\$15.38	\$15.49
Nondurable Goods Manufacturing	\$559.77	\$541.78	\$560.17	38.9	38.1	39.7	\$14.39	\$14.22	\$14.11

**ESTIMATED NONFARM EMPLOYMENT (in thousands)**

Industry	August 2006	Revised	Preliminary	Net Change	
		July 2007	August 2007	Aug. 2006	July 2007
		2007	2007	Aug. 2007	Aug. 2007
Total Nonfarm	756.3	757.4	<b>763.6</b>	7.3	6.2
Total Private	659.0	664.6	<b>665.5</b>	6.5	0.9
Goods-Producing	124.9	125.3	<b>125.2</b>	0.3	-0.1
Natural Resources, Mining, & Construction	40.2	42.8	<b>42.9</b>	2.7	0.1
Manufacturing	84.7	82.5	<b>82.3</b>	-2.4	-0.2
Durable Goods Manufacturing	58.2	56.9	<b>56.7</b>	-1.5	-0.2
Computer & Electronic Product Manufacturing	4.2	4.2	<b>4.2</b>	0.0	0.0
Electrical Equipment & Appliance Manufacturing	7.4	7.8	<b>7.8</b>	0.4	0.0
Transportation Equipment Manufacturing	20.3	19.2	<b>19.2</b>	-1.1	0.0
Nondurable Goods Manufacturing	26.5	25.6	<b>25.6</b>	-0.9	0.0
Service-Providing	631.4	632.1	<b>638.4</b>	7.0	6.3
Trade, Transportation, & Utilities	154.0	155.4	<b>156.0</b>	2.0	0.6
Wholesale Trade	37.0	37.2	<b>37.4</b>	0.4	0.2
Retail Trade	85.8	86.5	<b>86.8</b>	1.0	0.3
Food & Beverage Stores	12.1	12.4	<b>12.4</b>	0.3	0.0
General Merchandise Stores	16.9	17.2	<b>17.3</b>	0.4	0.1
Transportation, Warehousing, & Utilities	31.2	31.7	<b>31.8</b>	0.6	0.1
Information	19.6	19.5	<b>19.5</b>	-0.1	0.0
Financial Activities	46.3	46.8	<b>46.7</b>	0.4	-0.1
Finance & Insurance	35.3	35.5	<b>35.4</b>	0.1	-0.1
Real Estate, Rental, & Leasing	11.0	11.3	<b>11.3</b>	0.3	0.0
Professional & Business Services	100.2	99.7	<b>100.5</b>	0.3	0.8
Professional, Scientific, & Technical Services	36.3	37.8	<b>37.8</b>	1.5	0.0
Management of Companies & Enterprises	7.8	7.7	<b>7.7</b>	-0.1	0.0
Administrative, Support, & Waste Management	56.1	54.2	<b>55.0</b>	-1.1	0.8
Educational & Health Services	104.7	105.5	<b>105.5</b>	0.8	0.0
Educational Services	22.7	23.1	<b>23.1</b>	0.4	0.0
Health Care & Social Assistance	82.0	82.4	<b>82.4</b>	0.4	0.0
Hospitals	27.8	28.0	<b>27.9</b>	0.1	-0.1
Leisure & Hospitality	78.6	80.7	<b>80.5</b>	1.9	-0.2
Arts, Entertainment, & Recreation	11.1	11.2	<b>11.1</b>	0.0	-0.1
Accommodation & Food Services	67.5	69.5	<b>69.4</b>	1.9	-0.1
Accommodation	12.8	12.9	<b>13.0</b>	0.2	0.1
Food Services & Drinking Places	54.7	56.6	<b>56.4</b>	1.7	-0.2
Other Services	30.7	31.7	<b>31.6</b>	0.9	-0.1
Government	97.3	92.8	<b>98.1</b>	0.8	5.3
Federal Government	11.4	11.4	<b>11.3</b>	-0.1	-0.1
State Government	28.0	28.4	<b>28.6</b>	0.6	0.2
Local Government	57.9	53.0	<b>58.2</b>	0.3	5.2

## Nonfarm Employment (Smaller MSAs)

	Clarksville, TN-KY MSA		Cleveland, TN MSA		Jackson, TN MSA	
	July 2007	August 2007	July 2007	August 2007	July 2007	August 2007
	Revised	Prelim.	Revised	Prelim.	Revised	Prelim.
Total Nonfarm	82,500	83,500	42,100	42,800	62,600	62,600
Total Private	66,200	66,200	37,700	37,700	50,600	50,400
Goods-Producing	16,700	16,400	11,400	11,400	14,700	14,500
Service-Providing	65,800	67,100	30,700	31,400	47,900	48,100
Private Service-Providing	49,500	49,800	26,300	26,300	35,900	35,900
Natural Resources/Construction	3,300	3,300	1,900	1,900	3,700	3,700
Manufacturing	13,400	13,100	9,500	9,500	11,000	10,800
Durable Goods	9,200	9,100	5,200	5,200	7,200	7,000
Nondurable Goods	4,200	4,000	4,300	4,300	3,800	3,800
Trade/Transportation/Utilities	16,400	16,400	7,600	7,600	12,900	12,900
Wholesale Trade	1,900	1,900	1,800	1,800	2,900	2,900
Retail Trade	11,800	11,800	4,600	4,600	7,500	7,500
General Merchandise Stores	3,600	3,600	NA	NA	NA	NA
Transportation/Warehousing/Utilities	2,700	2,700	1,200	1,200	2,500	2,500
Information	1,200	1,200	300	300	700	700
Financial Activities	2,700	2,700	1,700	1,700	1,900	1,900
Professional/Business Services	8,100	8,200	4,200	4,200	4,600	4,600
Educational/Health Services	9,600	9,700	5,600	5,600	8,100	8,100
Leisure/Hospitality	8,400	8,500	4,400	4,400	5,500	5,500
Other Services	3,100	3,100	2,500	2,500	2,200	2,200
Government	16,300	17,300	4,400	5,100	12,000	12,200
Federal Government	5,300	5,400	300	300	500	500
State Government	2,800	2,800	600	600	1,800	1,800
Local Government	8,200	9,100	3,500	4,200	9,700	9,900

	Johnson City, TN MSA		Kingsport/Bristol, TN-VA MSA		Morristown, TN MSA	
	July 2007	August 2007	July 2007	August 2007	July 2007	August 2007
	Revised	Prelim.	Revised	Prelim.	Revised	Prelim.
Total Nonfarm	80,300	82,000	122,400	124,400	50,800	51,200
Total Private	66,000	66,200	107,900	108,100	44,800	44,600
Goods-Producing	13,700	13,700	33,500	33,600	17,400	17,300
Service-Providing	66,600	68,300	88,900	90,800	33,400	33,900
Private Service-Providing	52,300	52,500	74,400	74,500	27,400	27,300
Natural Resources/Construction	3,600	3,600	8,600	8,800	2,200	2,200
Manufacturing	10,100	10,100	24,900	24,800	15,200	15,100
Durable Goods	NA	NA	11,600	11,600	10,000	10,000
Nondurable Goods	NA	NA	13,300	13,200	NA	NA
Trade/Transportation/Utilities	14,500	14,400	25,200	25,200	10,600	10,600
Wholesale Trade	3,000	3,000	5,400	5,400	2,100	2,100
Retail Trade	10,200	10,100	15,300	15,300	5,700	5,700
General Merchandise Stores	NA	NA	NA	NA	NA	NA
Transportation/Warehousing/Utilities	1,300	1,300	4,500	4,500	2,800	2,800
Information	2,300	2,300	2,500	2,500	700	700
Financial Activities	4,900	4,900	4,200	4,200	2,000	2,000
Professional/Business Services	7,800	8,000	8,500	8,500	3,500	3,500
Educational/Health Services	11,300	11,300	17,100	17,100	5,300	5,300
Leisure/Hospitality	8,900	9,000	12,600	12,700	3,500	3,500
Other Services	2,600	2,600	4,300	4,300	1,800	1,700
Government	14,300	15,800	14,500	16,300	6,000	6,600
Federal Government	2,300	2,300	1,200	1,200	400	400
State Government	5,800	5,800	2,400	2,400	1,300	1,300
Local Government	6,200	7,700	10,900	12,700	4,300	4,900

**Clarksville MSA** is Montgomery County, Stewart County, Christian County, KY, & Trigg County, KY. **Cleveland MSA** is Bradley & Polk counties. **Jackson MSA** is Chester & Madison counties. **Johnson City MSA** is Carter, Unicoi, & Washington counties. **Kingsport-Bristol MSA** is Hawkins County, Sullivan County, Scott County, VA, Washington County, VA, & Bristol City, VA. **Morristown MSA** is Grainger, Hamblen, & Jefferson counties.

Tennessee Department of Labor & Workforce Development  
 Employment Security Division, Research & Statistics  
 11th Floor, Davy Crockett Tower  
 500 James Robertson Parkway  
 Nashville, TN 37245

**FIRST CLASS MAIL  
 POSTAGE & FEES PAID  
 BUREAU OF  
 LABOR STATISTICS  
 PERMIT NO. G-738**

Phone: 615-741-2284  
 Fax: 615-532-9434  
 E-mail: wayne.meisels@state.tn.us



The Tennessee Department of Labor and Workforce Development is committed to principles of equal opportunity, equal access, and affirmative action. Auxiliary aids and services are available upon request to individuals with disabilities. Tennessee Department of Labor and Workforce Development; Authorization 337607; This public document was promulgated for electronic use only.

We're on the Web  
[www.tennessee.gov/labor-wfd](http://www.tennessee.gov/labor-wfd)  
 Check out The Source at  
[www.tennessee.gov/labor-wfd/source](http://www.tennessee.gov/labor-wfd/source)



The Tennessee Department of Labor and Workforce Development is an equal opportunity employer/program. Auxiliary aids and services are available upon request. TTY: 615-532-2879 or 1-800-848-0299

**U.S. Consumer Price Index August 2007**

Group	Index	Percent Change	
		Yearly	Monthly
<b>U.S. City Average</b>			
All Items (1982-84=100) / All Urban Consumers	207.9	2.0	-0.2
All Items (1982-84=100) / Wage Earners & Clerical Workers	203.2	1.8	-0.2
<b>South</b>			
All Items (1982-84=100) / All Urban Consumers	201.0	2.0	-0.3
All Items (1982-84=100) / Wage Earners & Clerical Workers	198.1	1.8	-0.3

