



The Labor Market Report

Per Capita Income and Population by County

**August
2014**

**Bill Haslam,
Governor**

TENNESSEE

Department of Labor and Workforce Development

According to the U.S. Bureau of Economic Analysis (BEA), the per capita personal income in Tennessee was \$38,752 in 2012, up from \$35,431 in 2010. This was a 9.37 percent increase in two years.

Per capita personal income is defined as the annual total personal income of residents divided by the residential population as of July 1. Personal income is derived by summing the net earnings, rental income, personal dividend/interest income, and transfer payments by place of residence. Personal income excludes federal income tax deductions and other personal taxes and is reported in current dollars. In simpler terms, it is the total income on the front page of your 1040 tax form. This data can be influenced by large growth (or decline) in population, natural disasters (i.e., flooding or hurricanes), commuting populations (those that work in other counties), and state and local taxes. BEA uses the Census Bureau's annual midyear population estimates.

Personal income, as well as per capita personal income, had slower growth in 2012 compared to previous years. It should be noted that in the 55 large MSAs (over 1 million persons) the Nashville MSA had the largest personal income growth (up 7.8 percent).

Per Capital Income

In Tennessee, the counties with the largest per capita personal income in 2012 were Williamson (\$66,195), Davidson (\$51,526), Fayette (\$48,271), Trousdale (\$43,036), and Shelby (\$42,409). There was a correlation between those counties with high per capita income (in dollars) and growth in per capita income (by percent). The counties that had the highest percentage growth in per cap-

ita income from 2010 to 2012 were Trousdale (up 21.53 percent), Fayette (up 20.27 percent), Lake (up 17.32 percent), Williamson (up 15.95 percent), and Robertson (up 15.88 percent).

In 2010, Trousdale County had the 12th largest per capita income. The large percentage growth improved its rank to 4th. During that same time frame, Loudon County went from the 9th largest per capita income to the 12th largest in 2012. Loudon grew only 6.49 percent causing the decline in rank.

The counties with the lowest per capita personal income were Hancock (\$21,287), Lake (\$22,809), Wayne (\$24,228), and Scott (\$24,551). The counties with the smallest percentage growth in per capita income from 2010 to 2012 were Obion (up 1.55 percent), Montgomery (up 4.18 percent), Scott (up 4.53 percent), and Greene (up 4.92 percent).

Population

Residential population is a large component when calculating the per capita personal income. Counties with the largest population in 2012 were Shelby (940,764 residents), Davidson (648,295 residents), Knox (441,311 residents), Hamilton (345,545 residents), and Rutherford (274,454). The largest percentage population growth occurred in Montgomery (up 6.40 percent), Williamson (up 4.81 percent), Rutherford (up 4.05 percent), and Wilson (3.82 percent).

The counties with the smallest population were Pickett (5,100 residents), Van Buren (5,624 residents), Moore (6,339 residents), and Hancock (6,720 residents). The counties with the largest percentage decline in population over the last two years were Haywood (down 2.71 percent), Hardeman (down 2.25 percent), Lewis (down 2.05 percent), and Hickman (down 1.99 percent).

County Population and Per Capita Income, 2010 & 2012

County	Per Capita Personal Income			Population			County	Per Capita Personal Income			Population		
	2010	2012	Change %	2010	2012	Change %		2010	2012	Change %	2010	2012	Change %
Tennessee	\$35,431	\$38,752	9.37 %	6,356,673	6,456,243	1.57 %	Lake	\$19,441	\$22,809	17.32 %	7,822	7,690	-1.69 %
Anderson	35,468	38,567	8.74	75,141	75,416	0.37	Lauderdale	22,017	24,718	12.27	27,756	27,718	-0.14
Bedford	30,529	33,020	8.16	45,129	45,573	0.98	Lawrence	25,387	27,373	7.82	42,012	42,086	0.18
Benton	27,669	30,545	10.39	16,483	16,361	-0.74	Lewis	24,066	26,306	9.31	12,144	11,896	-2.04
Bledsoe	23,547	26,369	11.98	12,862	12,792	-0.54	Lincoln	31,321	34,306	9.53	33,433	33,503	0.21
Blount	31,704	34,292	8.16	123,138	124,177	0.84	Loudon	35,975	38,309	6.49	48,769	49,793	2.10
Bradley	30,551	33,960	11.16	99,146	101,134	2.01	McMinn	27,721	30,500	10.02	52,215	52,416	0.38
Campbell	\$27,370	\$29,548	7.96 %	40,690	40,420	-0.66 %	McNairy	\$26,204	\$27,944	6.64 %	26,063	26,180	0.45 %
Cannon	28,892	31,598	9.37	13,800	13,811	0.08	Macon	27,537	31,072	12.84	22,263	22,498	1.06
Carroll	30,038	33,245	10.68	28,494	28,390	-0.36	Madison	34,214	38,058	11.24	98,313	98,656	0.35
Carter	27,827	30,023	7.89	57,350	57,355	0.01	Marion	30,401	32,238	6.04	28,243	28,291	0.17
Cheatham	32,300	35,395	9.58	39,107	39,271	0.42	Marshall	25,033	27,046	8.04	30,659	30,883	0.73
Chester	27,385	30,618	11.81	17,163	17,171	0.05	Mauzy	30,428	33,134	8.89	81,155	81,990	1.03
Claiborne	27,444	29,592	7.83	32,243	31,736	-1.57	Meigs	27,890	31,461	12.80	11,759	11,698	-0.52
Clay	\$26,780	\$30,249	12.95 %	7,851	7,840	-0.14 %	Monroe	\$25,501	\$27,974	9.70 %	44,602	45,133	1.19 %
Cocke	25,006	26,723	6.87	35,631	35,571	-0.17	Montgomery	39,756	41,418	4.18	173,375	184,468	6.40
Coffee	33,322	36,403	9.25	52,803	53,222	0.79	Moore	33,782	37,932	12.28	6,354	6,339	-0.24
Crockett	30,948	34,867	12.66	14,563	14,623	0.41	Morgan	24,400	26,243	7.55	21,973	21,931	-0.19
Cumberland	29,525	31,862	7.92	56,217	57,029	1.44	Obion	30,983	31,362	1.22	31,802	31,340	-1.45
Davidson	46,952	51,526	9.74	628,021	648,295	3.23	Overton	24,803	26,714	7.70	22,101	22,190	0.40
Decatur	31,798	34,815	9.49	11,737	11,673	-0.55	Perry	26,973	29,253	8.45	7,928	7,860	-0.86
DeKalb	\$30,381	\$32,327	6.41 %	18,731	18,901	0.91 %	Pickett	\$26,549	\$28,209	6.25 %	5,072	5,100	0.55 %
Dickson	30,376	32,992	8.61	49,737	50,381	1.29	Polk	25,990	28,229	8.61	16,826	16,686	-0.83
Dyer	31,984	35,272	10.28	38,321	38,255	-0.17	Putnam	30,790	33,496	8.79	72,538	73,229	0.95
Fayette	40,135	48,271	20.27	38,413	38,659	0.64	Rhea	25,974	28,062	8.04	31,852	32,247	1.24
Fentress	26,600	29,317	10.21	17,934	17,940	0.03	Roane	34,110	36,356	6.58	54,128	53,469	-1.22
Franklin	29,426	32,539	10.58	40,987	40,772	-0.52	Robertson	32,422	37,571	15.88	66,427	66,931	0.76
Gibson	29,677	32,444	9.32	49,696	49,626	-0.14	Rutherford	31,665	34,551	9.11	263,779	274,454	4.05
Giles	\$29,546	\$32,390	9.63 %	29,384	29,072	-1.06 %	Scott	\$23,486	\$24,551	4.53 %	22,246	22,173	-0.33 %
Grainger	27,445	29,598	7.84	22,714	22,706	-0.04	Sequatchie	30,129	33,509	11.22	14,120	14,423	2.15
Greene	31,507	33,056	4.92	68,806	68,819	0.02	Sevier	31,260	33,495	7.15	90,146	92,512	2.62
Grundy	24,447	26,699	9.21	13,717	13,650	-0.49	Shelby	39,447	42,409	7.51	928,792	940,764	1.29
Hamblen	29,376	32,117	9.33	62,611	62,746	0.22	Smith	29,867	34,553	15.69	19,140	19,102	-0.20
Hamilton	38,379	41,200	7.35	337,328	345,545	2.44	Stewart	32,546	35,198	8.15	13,340	13,297	-0.32
Hancock	\$20,231	\$21,287	5.22 %	6,826	6,720	-1.55 %	Sullivan	\$33,779	\$36,711	8.68 %	156,866	156,786	-0.05 %
Hardeman	25,561	27,827	8.87	27,144	26,533	-2.25	Sumner	35,596	39,121	9.90	161,289	166,123	3.00
Hardin	31,836	35,404	11.21	26,031	25,950	-0.31	Tipton	33,370	36,825	10.35	61,160	61,705	0.89
Hawkins	27,706	30,007	8.31	56,842	56,587	-0.45	Trousdale	35,413	43,036	21.53	7,861	7,795	-0.84
Haywood	31,062	34,587	11.35	18,749	18,240	-2.71	Unicoi	30,498	32,584	6.84	18,267	18,235	-0.18
Henderson	26,460	29,073	9.88	27,748	28,023	0.99	Union	25,472	26,776	5.12	19,095	19,127	0.17
Henry	30,105	32,993	9.59	32,348	32,341	-0.02	Van Buren	26,951	29,007	7.63	5,539	5,628	1.61
Hickman	\$23,728	\$26,332	10.97 %	24,661	24,170	-1.99 %	Warren	\$26,284	\$28,463	8.29 %	39,846	39,839	-0.02 %
Houston	28,418	31,328	10.24	8,440	8,413	-0.32	Washington	33,932	36,963	8.93	123,349	125,094	1.41
Humphreys	30,617	33,784	10.34	18,572	18,275	-1.60	Wayne	22,713	24,228	6.67	16,993	16,996	0.02
Jackson	28,830	32,128	11.44	11,645	11,441	-1.75	Weakley	29,070	31,360	7.88	35,015	34,793	-0.63
Jefferson	27,882	29,492	5.77	51,438	52,191	1.46	White	24,748	27,098	9.50	25,840	26,082	0.94
Johnson	24,129	26,022	7.85	18,271	18,095	-0.96	Williamson	57,088	66,195	15.95	184,063	192,911	4.81
Knox	37,354	41,127	10.10	433,097	441,311	1.90	Wilson	37,259	40,880	9.72	114,583	118,961	3.82

Source: Census Bureau midyear population estimates. Estimates for 2010-2012 reflect county population estimates available as of March 2013.

TENNESSEE CIVILIAN LABOR FORCE 1984 to present

COUNTY UNEMPLOYMENT RATES

(NUMBERS IN THOUSANDS)

MONTHLY DATA NOT SEASONALLY ADJUSTED

Year and Month	Civilian Labor Force							Unemployed	
	Total	Employment	Employed				Number	Rate (%)	
			Total	**Manu- facturing	**Trade	**Services			
1984	2,233.5	2,026.4	1,812.0	497.1	413.3	344.3	207.1	9.3	
1985	2,255.7	2,070.0	1,867.8	492.4	435.3	360.2	185.7	8.2	
1986	2,291.3	2,110.7	1,929.8	490.5	452.1	384.7	180.6	7.9	
1987	2,324.1	2,166.5	2,011.6	497.4	477.2	408.9	157.6	6.8	
1988	2,333.6	2,197.2	2,092.1	511.9	495.6	440.3	136.4	5.8	
1989	2,364.9	2,241.3	2,167.2	524.5	508.4	467.2	123.6	5.2	
1990	2,401.1	2,269.0	2,193.2	493.4	379.1	611.0	132.1	5.5	
1991	2,425.4	2,266.0	2,183.6	480.3	373.0	626.7	159.4	6.6	
1992	2,479.5	2,316.7	2,245.0	492.8	374.1	664.8	162.8	6.6	
1993	2,543.3	2,391.6	2,328.5	502.8	382.5	709.8	151.7	6.0	
1994	2,645.7	2,511.1	2,423.0	513.8	398.4	751.4	134.6	5.1	
1995	2,718.0	2,574.0	2,498.9	518.0	412.6	795.0	144.0	5.3	
1996	2,758.4	2,611.0	2,533.3	501.5	420.9	814.3	147.4	5.3	
1997	2,788.3	2,640.0	2,584.0	498.0	430.5	849.7	148.3	5.3	
1998	2,811.7	2,685.2	2,638.4	498.6	437.1	875.7	126.5	4.5	
1999	2,838.7	2,722.1	2,685.3	494.7	443.6	900.8	116.6	4.1	
2000	2,871.5	2,756.5	2,728.9	488.1	447.5	930.9	115.0	4.0	
2001	2,863.5	2,728.5	2,688.3	454.2	446.6	921.5	135.0	4.7	
2002	2,867.1	2,715.0	2,664.4	428.5	438.7	938.0	152.1	5.3	
2003	2,896.1	2,731.4	2,667.5	414.1	440.8	950.3	164.8	5.7	
2004	2,904.4	2,746.2	2,706.1	411.8	447.5	978.7	158.1	5.4	
2005	2,942.3	2,778.5	2,743.1	408.8	454.6	1,005.6	163.8	5.6	
2006	3,008.9	2,852.5	2,783.1	400.1	460.6	1,030.4	156.4	5.2	
2007	3,021.5	2,874.2	2,797.4	380.0	463.5	1,052.8	147.3	4.9	
2008	3,056.1	2,854.5	2,774.8	361.0	457.0	1,058.2	201.6	6.6	
2009	3,051.6	2,734.3	2,619.8	309.2	427.8	1,025.3	317.3	10.4	
2010	3,082.6	2,778.8	2,615.4	298.9	423.5	1,041.2	303.8	9.9	
2011	3,118.8	2,828.3	2,661.4	304.4	427.1	1,076.8	290.4	9.3	
2012	3,099.7	2,846.4	2,714.0	313.4	433.3	1,112.2	253.4	8.2	
2013	3,070.3	2,818.3	2,749.7	318.8	437.2	1,139.2	252.0	8.2	
2014									
January	3,018.3	2,800.8	2,733.4	318.0	437.3	1,131.0	217.5	7.2 %	
February	3,016.8	2,795.5	2,752.7	318.4	436.7	1,143.6	221.3	7.3	
March	3,031.1	2,818.2	2,776.4	318.7	438.1	1,157.8	212.9	7.0	
April	3,004.3	2,828.6	2,802.8	321.1	441.5	1,172.9	175.7	5.8	
May	3,046.0	2,852.9	2,817.3	323.3	445.5	1,181.1	193.1	6.3	
June	3,071.7	2,845.1	2,791.6	324.5	446.5	1,186.8	226.6	7.4	
July (r)	3,069.7	2,831.8	2,784.3	323.5	447.8	1,177.8	237.9	7.7	
August (p)	3,010.9	2,787.7	2,806.8	325.5	446.7	1,186.8	223.2	7.4	
September									
October									
November									
December									

(r)=revised

**These industries not comparable to industry employment data before

(p)=preliminary

1990 because of changes to NAICS coding system.

Trade = Wholesale and Retail Trade

Services = Professional/Business Services, Educational/Health Services, Leisure/Hospitality, and Other Services.

County	Aug	Aug	County	Aug	Aug
	2013	2014		2013	2014
Anderson	8.1	7.0	Lauderdale	13.6	12.3
Bedford	8.3	7.2	Lawrence	12.1	10.3
Benton	10.9	9.7	Lewis	10.1	9.0
Bledsoe	10.4	8.9	Lincoln	5.9	5.3
Blount	6.9	6.2	Loudon	7.6	6.6
Bradley	7.8	7.0	Macon	7.9	6.1
Campbell	10.7	9.2	Madison	8.8	7.6
Cannon	7.4	6.5	Marion	8.8	8.9
Carroll	12.2	10.4	Marshall	9.9	8.5
Carter	8.7	8.0	Maury	8.7	7.6
Cheatham	6.7	6.3	McMinn	9.1	8.0
Chester	9.2	8.2	McNairy	11.4	10.1
Claiborne	11.5	9.5	Meigs	9.8	8.8
Clay	10.0	8.5	Monroe	10.3	8.6
Coke	9.8	8.8	Montgomery	8.2	7.3
Coffee	7.6	7.0	Moore	7.4	6.2
Crockett	10.1	8.8	Morgan	10.6	9.7
Cumberland	9.1	8.5	Obion	11.4	10.1
Davidson	6.9	6.2	Overton	8.6	8.0
Decatur	9.7	9.1	Perry	11.1	9.9
DeKalb	8.2	6.9	Pickett	11.9	11.0
Dickson	7.4	6.4	Polk	8.8	7.9
Dyer	10.9	9.1	Putnam	8.0	7.0
Fayette	9.1	8.0	Rhea	11.2	9.3
Fentress	9.0	8.3	Roane	8.1	7.2
Franklin	7.7	6.4	Robertson	6.7	6.4
Gibson	12.7	10.8	Rutherford	6.9	6.0
Giles	9.0	7.6	Scott	16.1	13.9
Grainger	10.3	8.3	Sequatchie	8.4	8.6
Greene	10.6	9.7	Sevier	7.5	6.7
Grundy	9.3	8.7	Shelby	9.8	8.9
Hamblen	9.0	8.1	Smith	7.2	6.0
Hamilton	8.1	7.4	Stewart	8.6	8.0
Hancock	12.0	11.3	Sullivan	7.3	7.1
Hardeman	11.5	9.9	Sumner	6.9	6.1
Hardin	9.7	8.9	Tipton	9.0	8.5
Hawkins	8.0	7.8	Trousdale	8.7	6.9
Haywood	11.9	9.9	Unicoi	8.4	8.7
Henderson	12.0	10.1	Union	8.0	6.9
Henry	10.3	9.1	Van Buren	11.9	10.0
Hickman	8.2	7.0	Warren	9.0	7.8
Houston	9.8	9.3	Washington	7.8	7.1
Humphreys	8.8	8.0	Wayne	10.8	10.3
Jackson	9.6	8.0	Weakley	12.9	11.3
Jefferson	9.4	7.8	White	11.0	9.1
Johnson	9.5	7.8	Williamson	6.1	5.5
Knox	7.1	6.3	Wilson	6.6	5.7
Lake	10.2	9.8			

*Data Not Seasonally Adjusted



Statewide

ESTIMATED NONFARM EMPLOYMENT (in thousands)

Industry	Revised		Preliminary August 2014	Net Change		
	August 2013	July 2014		Aug. 2013 Aug. 2014	July 2014	2014
Total Nonfarm	2,749.6	2,784.3	2,806.8	57.2	22.5	
Total Private	2,345.9	2,396.0	2,407.1	61.2	11.1	
Goods Producing	430.8	439.8	443.1	12.3	3.3	
Mining, Logging, & Construction	110.7	116.3	117.6	6.9	1.3	
Manufacturing	320.1	323.5	325.5	5.4	2.0	
Durable Goods Manufacturing	199.9	206.1	208.1	8.2	2.0	
Wood Product Manufacturing	10.9	11.0	11.1	0.2	0.1	
Nonmetallic Mineral Product Manufacturing	12.3	12.2	12.3	0.0	0.1	
Primary Metal Manufacturing	10.0	10.1	10.3	0.3	0.2	
Fabricated Metal Product Manufacturing	33.9	34.7	34.7	0.8	0.0	
Machinery Manufacturing	25.8	26.7	27.0	1.2	0.3	
Computer & Electronic Product Manufacturing	5.2	5.3	5.3	0.1	0.0	
Electrical Equipment & Appliance Manufacturing	18.6	19.7	19.8	1.2	0.1	
Transportation Equipment Manufacturing	60.2	63.3	64.3	4.1	1.0	
Furniture & Related Product Manufacturing	8.6	8.7	8.8	0.2	0.1	
Miscellaneous Manufacturing Durable Goods	14.4	14.4	14.5	0.1	0.1	
Nondurable Goods Manufacturing	120.2	117.4	117.4	-2.8	0.0	
Textile Mills, Products, & Apparel	10.6	10.1	10.1	-0.5	0.0	
Food Manufacturing	32.4	31.8	31.9	-0.5	0.1	
Beverage & Tobacco Product Manufacturing	5.3	5.0	5.0	-0.3	0.0	
Paper Manufacturing	14.8	14.5	14.4	-0.4	-0.1	
Printing & Related Support Activities	9.7	9.1	9.2	-0.5	0.1	
Chemical Manufacturing	25.1	25.0	25.0	-0.1	0.0	
Plastics & Rubber Products Manufacturing	20.1	20.2	20.2	0.1	0.0	
Plastics Product Manufacturing	12.0	12.0	12.0	0.0	0.0	
Rubber Product Manufacturing	8.1	8.2	8.2	0.1	0.0	
Service Providing	2,318.8	2,344.5	2,363.7	44.9	19.2	
Trade, Transportation, & Utilities	583.5	595.1	593.9	10.4	-1.2	
Wholesale Trade	123.1	126.2	126.9	3.8	0.7	
Merchant Wholesalers, Durable Goods	62.8	64.3	64.7	1.9	0.4	
Merchant Wholesalers, Nondurable Goods	41.6	42.7	42.9	1.3	0.2	
Wholesale Electronic Markets	18.7	19.2	19.3	0.6	0.1	
Retail Trade	315.1	321.6	319.8	4.7	-1.8	
Motor Vehicle & Parts Dealers	41.2	43.6	43.8	2.6	0.2	
Furniture & Home Furnishings Stores	8.5	8.4	8.4	-0.1	0.0	
Building Material, Garden Equipment, & Supplies	26.6	27.7	26.7	0.1	-1.0	
Food & Beverage Stores	52.4	53.9	54.4	2.0	0.5	
Health & Personal Care Stores	22.5	22.4	22.4	-0.1	0.0	
Gasoline Stations	21.4	21.3	21.1	-0.3	-0.2	
Clothing & Clothing Accessories Stores	24.8	25.2	25.1	0.3	-0.1	
Sporting Goods, Hobby, Book, & Music Stores	10.8	10.5	10.9	0.1	0.4	
General Merchandise Stores	70.0	68.9	68.8	-1.2	-0.1	
Miscellaneous Store Retailers	16.6	17.6	17.1	0.5	-0.5	
Nonstore Retailers	8.6	8.4	8.5	-0.1	0.1	
Transportation, Warehousing, & Utilities	145.3	147.3	147.2	1.9	-0.1	
Utilities	3.4	3.4	3.3	-0.1	-0.1	
Transportation & Warehousing	141.9	143.9	143.9	2.0	0.0	
Truck Transportation	57.1	58.5	58.4	1.3	-0.1	
Information	44.0	43.3	42.6	-1.4	-0.7	
Financial Activities	138.6	140.0	140.7	2.1	0.7	
Finance & Insurance	105.1	105.5	106.0	0.9	0.5	
Real Estate, Rental, & Leasing	33.5	34.5	34.7	1.2	0.2	
Professional & Business Services	352.5	365.9	372.7	20.2	6.8	
Professional, Scientific, & Technical Services	113.5	117.8	117.7	4.2	-0.1	
Management of Companies & Enterprises	36.0	38.3	38.3	2.3	0.0	
Administrative, Support, & Waste Management	203.0	209.8	216.7	13.7	6.9	
Educational & Health Services	393.2	395.8	396.0	2.8	0.2	
Educational Services	46.5	45.6	44.2	-2.3	-1.4	
Health Care & Social Assistance	346.7	350.2	351.8	5.1	1.6	
Ambulatory Health Care Services	136.0	141.4	142.1	6.1	0.7	
Hospitals	103.3	100.5	101.1	-2.2	0.6	
Nursing & Residential Care Facilities	60.3	62.0	61.2	0.9	-0.8	
Social Assistance	47.1	46.3	47.4	0.3	1.1	
Leisure & Hospitality	297.1	308.7	309.9	12.8	1.2	
Arts, Entertainment, & Recreation	35.2	40.1	37.9	2.7	-2.2	
Accommodation & Food Services	261.9	268.6	272.0	10.1	3.4	
Accommodation	34.3	37.6	37.9	3.6	0.3	
Food Services & Drinking Places	227.6	231.0	234.1	6.5	3.1	
Other Services	106.2	107.4	108.2	2.0	0.8	
Government	403.7	388.3	399.7	-4.0	11.4	
Federal Government	49.3	48.4	48.4	-0.9	0.0	
State Government	87.7	88.3	87.8	0.1	-0.5	
State Government Educational Services	45.3	45.2	45.0	-0.3	-0.2	
Local Government	266.7	251.6	263.5	-3.2	11.9	
Local Government Educational Services	126.7	111.9	123.2	-3.5	11.3	

NONFARM EMPLOYMENT & LABOR FORCE NARRATIVE

Total nonfarm employment increased by 57,200 jobs from August 2013 to August 2014. There were increases in professional/business services (up 20,200 jobs), which included increases of 13,700 jobs in administrative/support/waste management, 4,200 jobs in professional/scientific/technical services, and 2,300 jobs in management of companies/enterprises; accommodation/food services (up 10,100 jobs), which includes an increase of 6,500 jobs in food services/drinking places; mining/logging/construction (up 6,900 jobs); health care/social assistance (up 5,100 jobs), which included increases of 6,100 jobs in ambulatory health care services and 900 jobs in nursing/residential care facilities as well as a decline of 2,200 jobs in hospitals; retail trade (up 4,700 jobs), which included increases of 2,600 jobs in motor vehicle/parts dealers and 2,000 jobs in food/beverage stores; transportation equipment manufacturing (up 4,100 jobs); wholesale trade (up 3,800 jobs), which includes an increase of 1,900 jobs in durable goods wholesalers; arts/entertainment/recreation (up 2,700 jobs); financial activities (up 2,100 jobs); and transportation/warehousing (up 2,000 jobs).

These increases were partially offset by declines in local government educational services (down 3,500 jobs), educational services (down 2,300 jobs), information (down 1,400 jobs), and general merchandise stores (down 1,200 jobs).

During August 2014 nonfarm employment increased by 22,500 jobs. There were increases in a local government (up 11,900 jobs); administrative/support/waste management (up 6,900 jobs); accommodation/food services (up 3,400 jobs), which included an increase of 3,100 jobs in food services/drinking places; health care/social assistance (up 1,600 jobs); and mining/logging/construction (up 1,300 jobs).

This was partially offset by decreases in arts/entertainment/recreation (down 2,200 jobs); retail trade (down 1,800 jobs), which included a decrease of 1,000 jobs in building material/garden equipment/supplies; and educational services (down 1,400 jobs).

Tennessee's seasonally adjusted estimated unemployment rate for August was 7.4 percent, up 0.3 percentage point from the revised July 2014 rate. The United States unemployment rate in August was 6.1 percent, down 0.1 percentage point from the July 2014 rate.

In August 2013, the national unemployment rate was 7.2 percent while the state rate was 8.4 percent.

Across Tennessee, the unemployment rate decreased in 83 counties, increased in six counties, and remained the same in six counties. In August 2014, the lowest rate was in Lincoln County at 5.3 percent, down 0.3 percentage point from the previous month, while the highest rate was in Scott County at 13.9 percent, down from 14.3 percent in July.

The data from all the nonfarm employment estimates tables include all full- and part-time nonfarm wage and salary employees who worked during or received pay for any part of the pay period that includes the 12th of the month. This is a count of jobs by place of work. Agricultural workers, proprietors, self-employed persons, workers in private households, and unpaid family workers are excluded. These numbers may not add due to rounding. Data are based on the 2013 benchmark.

CIVILIAN LABOR FORCE

CIVILIAN LABOR FORCE SUMMARY

August 2013

July 2014

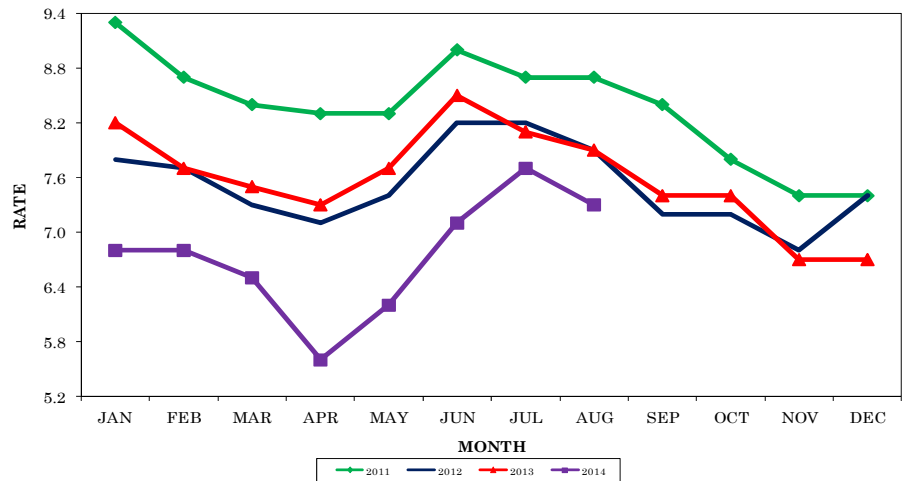
August 2014

	Labor Force	Employment	Unemployed	Rate	Labor Force	Employment	Unemployed	Rate	Labor Force	Employment	Unemployed	Rate
Seasonally Adjusted												
U.S.	155,435,000	144,179,000	11,256,000	7.2	156,023,000	146,352,000	9,671,000	6.2	155,959,000	146,368,000	9,591,000	6.1
TENNESSEE	3,059,600	2,803,900	255,700	8.4	3,035,200	2,819,300	215,900	7.1	3,016,800	2,794,400	222,400	7.4
Not Seasonally Adjusted												
U.S.	155,971,000	144,509,000	11,462,000	7.3	157,573,000	147,265,000	10,307,000	6.5	156,434,000	146,647,000	9,787,000	6.3
TENNESSEE	3,069,200	2,814,100	255,100	8.3	3,069,700	2,831,800	237,900	7.7	3,010,900	2,787,700	223,200	7.4
Metropolitan Statistical Areas												
Chattanooga	256,770	236,540	20,230	7.9	258,760	238,870	19,890	7.7	252,940	234,420	18,520	7.3
Clarksville	116,090	105,440	10,650	9.2	114,650	104,580	10,070	8.8	112,990	104,000	8,990	8.0
Cleveland	57,940	53,340	4,600	7.9	58,230	53,880	4,340	7.5	56,820	52,800	4,020	7.1
Jackson	56,390	51,400	4,990	8.8	56,930	52,420	4,510	7.9	55,160	50,940	4,230	7.7
Johnson City	95,460	87,730	7,720	8.1	93,940	86,730	7,210	7.7	92,390	85,470	6,920	7.5
Kingsport	144,940	133,820	11,120	7.7	143,150	132,580	10,570	7.4	141,360	131,080	10,280	7.3
Knoxville	358,260	332,490	25,770	7.2	366,140	341,670	24,460	6.7	357,430	334,570	22,870	6.4
Memphis	598,120	541,580	56,540	9.5	602,220	548,970	53,250	8.8	585,480	535,720	49,750	8.5
Morristown	61,580	55,820	5,760	9.4	60,370	55,320	5,060	8.4	59,340	54,570	4,770	8.0
Nashville	850,020	791,940	58,080	6.8	861,270	806,280	54,990	6.4	847,940	796,620	51,320	6.1
Micropolitan Statistical Areas												
Athens	23,840	21,680	2,160	9.1	23,580	21,570	2,010	8.5	23,080	21,230	1,840	8.0
Brownsville	8,720	7,690	1,040	11.9	8,270	7,400	870	10.5	8,250	7,430	820	9.9
Columbia	37,500	34,260	3,250	8.7	37,190	34,000	3,190	8.6	36,420	33,660	2,760	7.6
Cookeville	50,220	46,050	4,170	8.3	49,920	45,950	3,970	7.9	49,500	45,890	3,610	7.3
Crossville	24,260	22,060	2,200	9.1	22,890	20,880	2,020	8.8	22,940	21,000	1,940	8.5
Dyersburg	16,750	14,930	1,820	10.9	16,630	15,080	1,550	9.3	16,250	14,770	1,470	9.1
Greeneville	29,810	26,640	3,170	10.6	28,610	25,700	2,910	10.2	28,230	25,490	2,740	9.7
Harriman	26,670	24,500	2,170	8.1	26,410	24,460	1,950	7.4	25,810	23,950	1,860	7.2
Humboldt	20,030	17,480	2,550	12.7	19,700	17,480	2,220	11.3	19,120	17,050	2,070	10.8
LaFollette	16,590	14,820	1,770	10.7	16,410	14,850	1,560	9.5	16,110	14,630	1,480	9.2
Lawrenceburg	16,170	14,210	1,950	12.1	15,580	13,830	1,750	11.2	15,350	13,770	1,580	10.3
Lewisburg	12,510	11,270	1,240	9.9	12,300	11,160	1,140	9.3	12,160	11,120	1,030	8.5
Martin	15,830	13,790	2,040	12.9	14,600	12,540	2,060	14.1	13,830	12,260	1,570	11.3
McMinnville	17,640	16,050	1,600	9.0	17,100	15,590	1,510	8.9	16,660	15,370	1,300	7.8
Newport	16,210	14,620	1,590	9.8	15,450	14,060	1,390	9.0	15,230	13,880	1,350	8.8
Paris	13,910	12,470	1,440	10.3	13,670	12,310	1,360	9.9	13,250	12,040	1,210	9.1
Sevierville	51,440	47,590	3,850	7.5	50,750	47,250	3,500	6.9	49,660	46,360	3,300	6.7
Shelbyville	22,710	20,820	1,890	8.3	22,440	20,660	1,770	7.9	22,090	20,510	1,580	7.2
Tullahoma	49,980	46,170	3,810	7.6	48,660	45,130	3,530	7.3	48,310	45,070	3,240	6.7
Union City	15,970	14,070	1,900	11.9	15,080	13,330	1,750	11.6	14,930	13,390	1,540	10.3
Cities												
Bartlett	28,240	26,190	2,050	7.3	28,620	26,600	2,020	7.0	27,810	25,890	1,920	6.9
Brentwood	18,970	17,750	1,220	6.4	19,220	18,080	1,140	5.9	18,880	17,860	1,030	5.4
Bristol	12,770	11,800	970	7.6	12,650	11,670	990	7.8	12,420	11,470	960	7.7
Chattanooga	76,770	69,800	6,970	9.1	77,600	70,800	6,810	8.8	75,480	69,200	6,280	8.3
Clarksville	57,500	52,720	4,780	8.3	57,220	52,550	4,670	8.2	56,280	52,030	4,260	7.6
Cleveland	20,490	18,770	1,720	8.4	20,600	18,960	1,640	8.0	20,050	18,580	1,470	7.3
Collierville	22,000	20,540	1,460	6.6	22,270	20,870	1,410	6.3	21,670	20,310	1,360	6.3
Columbia	15,460	13,960	1,500	9.7	15,330	13,860	1,470	9.6	14,960	13,720	1,240	8.3
Cookeville	15,250	13,990	1,250	8.2	15,160	13,960	1,200	7.9	15,020	13,950	1,080	7.2
Franklin	35,400	33,370	2,030	5.7	35,940	33,970	1,970	5.5	35,510	33,560	1,950	5.5
Gallatin	14,410	13,280	1,130	7.8	14,610	13,520	1,090	7.5	14,370	13,360	1,010	7.0
Germantown	19,080	17,820	1,250	6.6	19,210	18,110	1,110	5.8	18,730	17,620	1,110	5.9
Hendersonville	28,510	26,620	1,890	6.6	28,810	27,110	1,700	5.9	28,410	26,780	1,630	5.7
Jackson	31,520	28,530	2,990	9.5	31,790	29,090	2,700	8.5	30,790	28,270	2,520	8.2
Johnson City	31,320	28,860	2,460	7.9	30,920	28,530	2,400	7.8	30,360	28,110	2,250	7.4
Kingsport	21,440	19,750	1,690	7.9	21,150	19,530	1,620	7.7	20,800	19,200	1,600	7.7
Knoxville	89,600	82,170	7,430	8.3	91,470	84,440	7,020	7.7	89,330	82,690	6,640	7.4
LaVergne	19,060	17,820	1,240	6.5	19,380	18,140	1,240	6.4	18,980	17,920	1,060	5.6
Lebanon	13,620	12,620	1,010	7.4	13,790	12,840	950	6.9	13,520	12,690	830	6.1
Maryville	12,930	11,940	990	7.6	13,210	12,270	940	7.1	12,910	12,020	890	6.9
Memphis	282,210	251,340	30,870	10.9	283,560	255,340	28,220	10.0	275,780	248,500	27,280	9.9
Morristown	12,640	11,430	1,210	9.6	12,390	11,330	1,060	8.6	12,240	11,180	1,070	8.7
Murfreesboro	60,680	56,140	4,550	7.5	61,520	57,150	4,370	7.1	60,310	56,470	3,840	6.4
Nashville	335,850	312,570	23,280	6.9	339,560	318,230	21,320	6.3	335,200	314,420	20,770	6.2
Oak Ridge	13,780	12,730	1,050	7.6	14,060	13,040	1,020	7.3	13,700	12,770	930	6.8
Smyrna	22,650	21,160	1,490	6.6	23,090	21,540	1,550	6.7	22,650	21,280	1,360	6.0
Spring Hill	16,220	15,170	1,050	6.5	16,280	15,350	930	5.7	16,080	15,180	900	5.6

Total nonfarm employment increased by 1,500 jobs from July 2014 to August 2014. There were seasonal increases in local government (up 1,800 jobs) and professional/business services (up 500 jobs). This was partially offset by declines of 300 jobs in both educational/health services and leisure/hospitality.

During the past 12 months, nonfarm employment increased by 3,500 jobs. During the year, goods-producing jobs increased by 100 while service-providing industries jobs increased by 3,400.

**CHATTANOOGA MSA
UNEMPLOYMENT RATES**
(NOT SEASONALLY ADJUSTED)



ESTIMATED NONFARM EMPLOYMENT (in thousands)

Industry	August	Revised	Preliminary	Net Change	
	2013	July 2014	August 2014	Aug. 2013 Aug. 2014	July 2014 Aug. 2014
Total Nonfarm	238.3	240.3	241.8	3.5	1.5
Total Private	202.9	206.9	206.7	3.8	-0.2
Goods Producing	39.6	39.6	39.7	0.1	0.1
Mining, Logging, & Construction	9.1	9.2	9.3	0.2	0.1
Manufacturing	30.5	30.4	30.4	-0.1	0.0
Durable Goods Manufacturing	16.0	16.3	16.4	0.4	0.1
Nondurable Goods Manufacturing	14.5	14.1	14.0	-0.5	-0.1
Service Providing	198.7	200.7	202.1	3.4	1.4
Trade, Transportation, & Utilities	51.6	52.1	52.0	0.4	-0.1
Wholesale Trade	8.8	9.0	9.0	0.2	0.0
Retail Trade	25.3	25.2	25.1	-0.2	-0.1
Transportation, Warehousing, & Utilities	17.5	17.9	17.9	0.4	0.0
Information	2.9	2.9	2.8	-0.1	-0.1
Financial Activities	13.9	14.1	14.2	0.3	0.1
Professional & Business Services	27.3	26.9	27.4	0.1	0.5
Educational & Health Services	31.8	32.5	32.2	0.4	-0.3
Leisure & Hospitality	25.9	28.7	28.4	2.5	-0.3
Other Services	9.9	10.1	10.0	0.1	-0.1
Government	35.4	33.4	35.1	-0.3	1.7
Federal Government	6.3	6.3	6.2	-0.1	-0.1
State Government	6.2	6.3	6.3	0.1	0.0
Local Government	22.9	20.8	22.6	-0.3	1.8

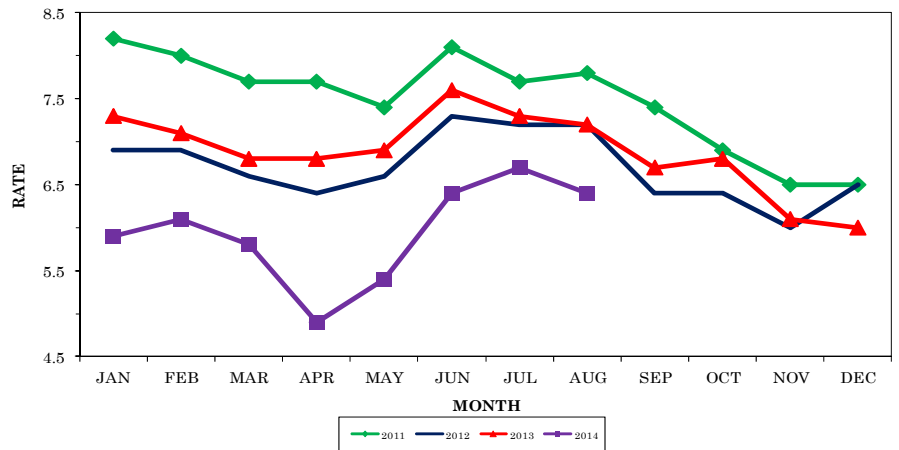


Knoxville MSA - Anderson, Blount, Knox, Loudon, Union

Total nonfarm employment increased by 3,100 jobs from July 2014 to August 2014. There were seasonal increases in local government (up 1,400 jobs), professional/business services (up 1,000 jobs), and mining/logging/construction (up 600 jobs). This was partially offset by a decrease in retail trade (down 200 jobs).

Over the past 12 months, nonfarm employment increased by 10,600 jobs. During that time, goods-producing jobs increased by 2,400 jobs, while service-providing jobs increased by 8,200.

**KNOXVILLE MSA
UNEMPLOYMENT RATES**
(NOT SEASONALLY ADJUSTED)



ESTIMATED NONFARM EMPLOYMENT (in thousands)

Industry	August 2013	Revised	Preliminary	Net Change	
		July 2014	August 2014	Aug. 2013 Aug. 2014	July 2014 Aug. 2014
Total Nonfarm	332.9	340.4	343.5	10.6	3.1
Total Private	285.8	294.3	295.9	10.1	1.6
Goods Producing	47.0	48.8	49.4	2.4	0.6
Mining, Logging, & Construction	15.7	16.7	17.3	1.6	0.6
Manufacturing	31.3	32.1	32.1	0.8	0.0
Durable Goods Manufacturing	22.9	23.6	23.7	0.8	0.1
Nondurable Goods Manufacturing	8.4	8.5	8.4	0.0	-0.1
Service Providing	285.9	291.6	294.1	8.2	2.5
Trade, Transportation, & Utilities	69.6	71.0	70.9	1.3	-0.1
Wholesale Trade	16.0	15.7	15.7	-0.3	0.0
Retail Trade	41.4	43.0	42.8	1.4	-0.2
Transportation, Warehousing, & Utilities	12.2	12.3	12.4	0.2	0.1
Information	5.7	5.6	5.5	-0.2	-0.1
Financial Activities	17.3	17.5	17.6	0.3	0.1
Professional & Business Services	50.0	51.5	52.5	2.5	1.0
Educational & Health Services	45.5	46.7	46.8	1.3	0.1
Leisure & Hospitality	37.3	39.6	39.6	2.3	0.0
Other Services	13.4	13.6	13.6	0.2	0.0
Government	47.1	46.1	47.6	0.5	1.5
Federal Government	4.9	4.9	4.9	0.0	0.0
State Government	14.5	14.4	14.5	0.0	0.1
Local Government	27.7	26.8	28.2	0.5	1.4

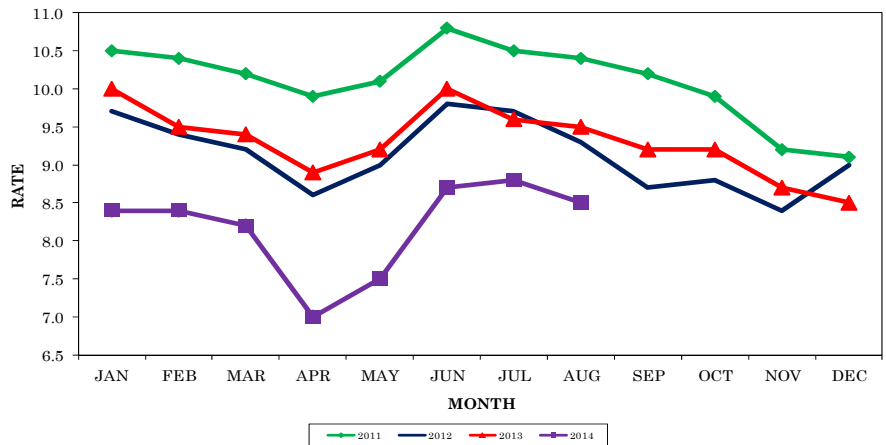


Total nonfarm employment increased by 1,300 jobs from July 2014 to August 2014. There were seasonal increases in local government (up 2,900 jobs), administrative/support/waste management (up 800 jobs), transportation/warehousing/utilities (up 400 jobs), educational/health services (up 300 jobs), and financial activities (up 200 jobs).

These were partially offset by decreases in mining/logging/construction and other services (both down 700 jobs), wholesale trade (down 500 jobs), retail trade (down 400 jobs), leisure/hospitality (down 300 jobs), and nondurable goods manufacturing (down 200 jobs).

During the past 12 months, nonfarm employment increased by 6,700 jobs. During that time, goods-producing jobs increased by 1,200, while service-providing jobs increased by 5,500.

**MEMPHIS MSA
UNEMPLOYMENT RATES
(NOT SEASONALLY ADJUSTED)**



ESTIMATED NONFARM EMPLOYMENT (in thousands)

Industry	August	Revised	Preliminary	Net Change	
	2013	July 2014	August 2014	Aug. 2013 Aug. 2014	July 2014 Aug. 2014
Total Nonfarm	602.5	607.9	609.2	6.7	1.3
Total Private	520.4	530.8	529.3	8.9	-1.5
Goods Producing	65.5	67.7	66.7	1.2	-1.0
Mining, Logging, & Construction	20.9	21.7	21.0	0.1	-0.7
Manufacturing	44.6	46.0	45.7	1.1	-0.3
Durable Goods Manufacturing	23.3	24.7	24.6	1.3	-0.1
Nondurable Goods Manufacturing	21.3	21.3	21.1	-0.2	-0.2
Service Providing	537.0	540.2	542.5	5.5	2.3
Trade, Transportation, & Utilities	161.8	163.9	163.4	1.6	-0.5
Wholesale Trade	34.1	34.7	34.2	0.1	-0.5
Retail Trade	64.3	65.6	65.2	0.9	-0.4
Transportation, Warehousing, & Utilities	63.4	63.6	64.0	0.6	0.4
Information	6.0	5.9	5.8	-0.2	-0.1
Financial Activities	27.5	29.7	29.9	2.4	0.2
Professional & Business Services	84.8	86.1	86.7	1.9	0.6
Professional, Scientific, & Technical Services	19.0	19.5	19.4	0.4	-0.1
Management of Companies & Enterprises	6.8	6.9	6.8	0.0	-0.1
Administrative, Support, & Waste Management	59.0	59.7	60.5	1.5	0.8
Educational & Health Services	86.0	85.8	86.1	0.1	0.3
Leisure & Hospitality	64.7	66.4	66.1	1.4	-0.3
Other Services	24.1	25.3	24.6	0.5	-0.7
Government	82.1	77.1	79.9	-2.2	2.8
Federal Government	14.0	13.5	13.5	-0.5	0.0
State Government	13.1	12.8	12.7	-0.4	-0.1
Local Government	55.0	50.8	53.7	-1.3	2.9



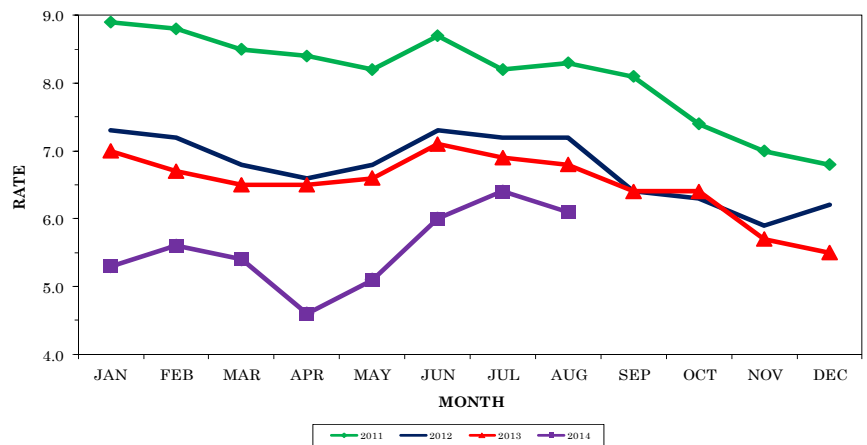
Nashville MSA — Cannon, Cheatham, Davidson, Dickson, Hickman, Macon, Robertson, Rutherford, Smith, Sumner, Trousdale, Williamson, Wilson

Total nonfarm employment increased by 14,500 jobs from July 2014 to August 2014. There were seasonal increases in local government (up 6,000 jobs); administrative/support/waste management (up 3,300 jobs); leisure/hospitality (up 2,800 jobs); educational/health services (up 1,700 jobs), which includes an increase of 1,400 jobs in health care/social assistance; transportation/warehousing utilities and other services (both up 500 jobs); and mining/logging/construction and retail trade (both up 300 jobs).

These were partially offset by declines in professional/scientific/technical services (down 500 jobs) and durable goods manufacturing and financial activities (both down 200 jobs).

During the past 12 months, nonfarm employment increased by 25,300 jobs. During that time, goods-producing jobs increased by 6,300, while service-providing jobs increased by 19,000.

NASHVILLE MSA UNEMPLOYMENT RATES (NOT SEASONALLY ADJUSTED)



ESTIMATED NONFARM EMPLOYMENT (in thousands)

Industry	August	Revised	Preliminary	Net Change	
	2013	July 2014	August 2014	Aug. 2013 Aug. 2014	July 2014 Aug. 2014
Total Nonfarm	812.6	823.4	837.9	25.3	14.5
Total Private	711.5	727.9	736.3	24.8	8.4
Goods Producing	105.0	111.2	111.3	6.3	0.1
Mining, Logging, & Construction	33.5	37.0	37.3	3.8	0.3
Manufacturing	71.5	74.2	74.0	2.5	-0.2
Durable Goods Manufacturing	49.7	52.3	52.1	2.4	-0.2
Nondurable Goods Manufacturing	21.8	21.9	21.9	0.1	0.0
Service Providing	707.6	712.2	726.6	19.0	14.4
Trade, Transportation, & Utilities	160.8	163.7	164.5	3.7	0.8
Wholesale Trade	40.3	41.8	41.8	1.5	0.0
Retail Trade	85.4	87.4	87.7	2.3	0.3
Transportation, Warehousing, & Utilities	35.1	34.5	35.0	-0.1	0.5
Information	20.4	20.2	20.1	-0.3	-0.1
Financial Activities	51.6	50.8	50.6	-1.0	-0.2
Professional & Business Services	122.4	132.4	135.2	12.8	2.8
Professional, Scientific, & Technical Services	46.8	51.6	51.1	4.3	-0.5
Management of Companies & Enterprises	14.3	16.0	16.0	1.7	0.0
Administrative, Support, & Waste Management	61.3	64.8	68.1	6.8	3.3
Educational & Health Services	126.7	126.0	127.7	1.0	1.7
Educational Services	21.5	21.4	21.7	0.2	0.3
Health Care & Social Assistance	105.2	104.6	106.0	0.8	1.4
Leisure & Hospitality	91.5	90.5	93.3	1.8	2.8
Other Services	33.1	33.1	33.6	0.5	0.5
Government	101.1	95.5	101.6	0.5	6.1
Federal Government	12.3	12.0	12.0	-0.3	0.0
State Government	26.5	27.1	27.2	0.7	0.1
Local Government	62.3	56.4	62.4	0.1	6.0

Nonfarm Employment (Smaller MSAs)

	Clarksville, TN-KY MSA		Cleveland, TN MSA		Jackson, TN MSA	
	July 2014 Revised	Aug. 2014 Prelim.	July 2014 Revised	Aug. 2014 Prelim.	July 2014 Revised	Aug. 2014 Prelim.
Total Nonfarm	87,000	88,700	45,000	45,400	61,900	62,000
Total Private	68,100	68,600	40,100	39,900	49,500	49,700
Goods Producing	13,300	13,400	10,500	10,500	10,900	10,900
Mining, Logging, & Construction	3,600	3,600	1,800	1,900	2,600	2,600
Manufacturing	9,700	9,800	8,700	8,600	8,300	8,300
Service Providing	73,700	75,300	34,500	34,900	51,000	51,100
Trade, Transportation, & Utilities	16,300	16,300	8,700	8,700	12,300	12,200
Wholesale Trade	N.A.	N.A.	900	900	3,100	3,100
Retail Trade	11,600	11,600	5,200	5,200	7,500	7,400
Transportation, Warehousing, & Utilities	2,300	2,300	2,600	2,600	1,700	1,700
Information	1,100	1,000	300	300	500	500
Financial Activities	3,000	3,000	1,300	1,300	1,800	1,800
Professional & Business Services	8,600	9,100	5,500	5,400	6,100	6,200
Educational & Health Services	11,500	11,600	6,200	6,200	9,600	9,700
Leisure & Hospitality	11,200	11,200	5,200	5,100	6,000	6,100
Other Services	3,100	3,000	2,400	2,400	2,300	2,300
Government	18,900	20,100	4,900	5,500	12,400	12,300
Federal Government	6,200	6,300	300	300	400	400
State Government	3,700	3,700	700	700	1,700	1,600
Local Government	9,000	10,100	3,900	4,500	10,300	10,300

	Johnson City, TN MSA		Kingsport-Bristol, TN-VA MSA		Morristown, TN MSA	
	July 2014 Revised	Aug. 2014 Prelim.	July 2014 Revised	Aug. 2014 Prelim.	July 2014 Revised	Aug. 2014 Prelim.
Total Nonfarm	75,800	76,800	118,200	119,400	45,100	46,000
Total Private	62,100	62,000	104,000	103,900	38,500	38,900
Goods Producing	9,900	9,800	28,600	28,700	12,600	12,800
Mining, Logging, & Construction	2,700	2,600	7,300	7,400	2,100	2,200
Manufacturing	7,200	7,200	21,300	21,300	10,500	10,600
Service Providing	65,900	67,000	89,600	90,700	32,500	33,200
Trade, Transportation, & Utilities	13,100	13,000	24,500	24,400	10,200	10,300
Wholesale Trade	2,100	2,100	5,000	5,000	2,000	2,100
Retail Trade	10,000	9,900	14,900	14,700	5,800	5,800
Transportation, Warehousing, & Utilities	1,000	1,000	4,600	4,700	2,400	2,400
Information	1,300	1,300	2,100	2,000	400	300
Financial Activities	3,700	3,700	3,800	3,800	1,200	1,200
Professional & Business Services	8,600	8,700	9,900	9,700	3,700	3,800
Educational & Health Services	13,400	13,600	18,500	18,600	5,000	5,000
Leisure & Hospitality	9,500	9,400	12,100	12,200	4,100	4,200
Other Services	2,600	2,500	4,500	4,500	1,300	1,300
Government	13,700	14,800	14,200	15,500	6,600	7,100
Federal Government	2,700	2,700	900	900	300	300
State Government	4,600	4,600	2,300	2,300	1,500	1,400
Local Government	6,400	7,500	11,000	12,300	4,800	5,400

Clarksville MSA is Montgomery County, Stewart County, Christian County, KY, & Trigg County, KY. **Cleveland MSA** is Bradley & Polk counties. **Jackson MSA** is Chester & Madison counties. **Johnson City MSA** is Carter, Unicoi, & Washington counties. **Kingsport-Bristol MSA** is Hawkins County, Sullivan County, Scott County, VA, Washington County, VA, & Bristol City, VA. **Morristown MSA** is Grainger, Hamblen, & Jefferson counties.

U.S. Consumer Price Index — August 2014

Group	All Urban Consumers			Wage & Clerical Earners		
	Index	Percent Change		Index	Percent Change	
		Yearly	Monthly		Yearly	Monthly
U.S. City Average						
All Items (1982-84=100)	237.852	1.7	-0.2	234.030	1.6	-0.2
Food and beverages	243.497	2.6	0.3	243.052	2.7	0.4
Housing	234.571	2.6	0.0	231.229	2.7	0.0
Apparel	125.726	0.0	0.9	124.596	-0.7	0.6
Transportation	218.279	-0.4	-1.6	219.420	-0.5	-1.6
Medical care	435.777	2.1	0.0	438.636	1.9	0.0
South						
All Items (1982-84=100)	231.611	1.7	-0.2	229.594	1.5	-0.3
Food and beverages	242.188	2.2	0.4	241.531	2.3	0.4
Housing	218.657	2.8	0.1	218.890	2.8	0.1
Apparel	131.830	-2.3	0.0	131.189	-2.8	-0.3
Transportation	218.549	-0.2	-1.6	218.836	-0.3	-1.7
Medical care	415.472	2.0	0.0	421.532	1.9	0.0

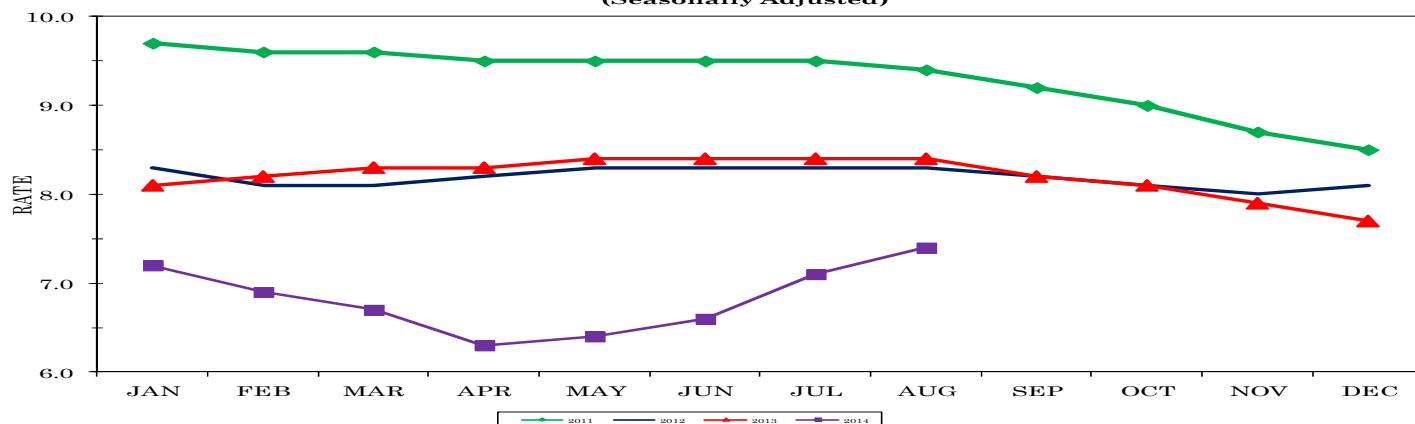
HOURS AND EARNINGS OF PRODUCTION WORKERS

	AVERAGE WEEKLY EARNINGS			AVG. HOURLY EARNINGS			AVERAGE WEEKLY HOURS		
	Aug.	July	Aug.	Aug.	July	Aug.	Aug.	July	Aug.
	2013	2014	2014	2013	2014	2014	2013	2014	2014
Manufacturing	\$717.29	\$727.18	\$737.59	\$17.41	\$17.65	\$17.52	41.2	41.2	42.1
Durable Goods Manufacturing	\$746.01	\$744.93	\$741.01	\$17.89	\$17.95	\$17.77	41.7	41.5	41.7
Non-Durable Goods Manufacturing	\$667.77	\$694.67	\$732.30	\$16.57	\$17.11	\$17.07	40.3	40.6	42.9

ALL EMPLOYEE HOURS AND EARNINGS

	AVERAGE WEEKLY EARNINGS			AVG. HOURLY EARNINGS			AVERAGE WEEKLY HOURS		
	Aug.	July	Aug.	Aug.	July	Aug.	Aug.	July	Aug.
	2013	2014	2014	2013	2014	2014	2013	2014	2014
Total Private	\$709.06	\$726.53	\$732.78	\$20.03	\$20.64	\$20.70	35.4	35.2	35.4
Goods Producing	\$860.28	\$871.08	\$877.34	\$20.83	\$21.35	\$21.09	41.3	40.8	41.6
Mining, Logging and Construction	\$874.87	\$916.98	\$892.17	\$20.98	\$21.99	\$21.55	41.7	41.7	41.4
Manufacturing	\$856.14	\$855.36	\$872.36	\$20.78	\$21.12	\$20.92	41.2	40.5	41.7
Private Service Providing	\$675.86	\$695.30	\$700.06	\$19.82	\$20.45	\$20.59	34.1	34.0	34.0
Trade, Transportation, and Utilities	\$653.84	\$658.26	\$660.50	\$18.47	\$18.97	\$18.98	35.4	34.7	34.8
Information	\$947.16	\$950.09	\$961.50	\$25.53	\$25.54	\$25.64	37.1	37.2	37.5
Financial Activities	\$868.02	\$933.50	\$949.62	\$23.46	\$24.31	\$24.99	37.0	38.4	38.0
Professional and Business Services	\$869.80	\$929.81	\$924.78	\$23.83	\$25.90	\$25.76	36.5	35.9	35.9
Education and Health Services	\$721.67	\$726.47	\$738.99	\$21.04	\$21.18	\$21.42	34.3	34.3	34.5
Leisure and Hospitality	\$309.89	\$320.26	\$318.11	\$11.52	\$11.52	\$11.61	26.9	27.8	27.4
Other Services	\$641.61	\$640.26	\$666.33	\$19.21	\$19.52	\$19.95	33.4	32.8	33.4

TENNESSEE UNEMPLOYMENT RATES (Seasonally Adjusted)





The Tennessee Department of Labor and Workforce Development is committed to principles of equal opportunity, equal access, and affirmative action. Auxiliary aids and services are available upon request to individuals with disabilities.
Tennessee Department of Labor and Workforce Development; Authorization 337607; This public document was promulgated for electronic use only.