



# The Labor Market Report

## What are the 2015 Labor Surplus Areas?

**January  
2015**

**Bill Haslam,  
Governor**

**TENNESSEE**

**Department of Labor and Workforce Development**

Labor surplus areas (LSAs) are civil jurisdictions with higher-than-average unemployment rates. Employers in these LSAs may be given preference in bidding on federal procurement contracts. The purpose in providing such preference is to help direct the government's dollars into areas where people are in the most severe economic need. The civil jurisdictions are defined as all cities with a population of at least 25,000 and all counties.

A civil jurisdiction becomes a labor surplus area when its average unemployment rate was at least 20 percent above the average unemployment rate for all states during the previous two calendar years. During periods of high national unemployment, this 20 percent is disregarded and areas are classified as LSAs if the unemployment rate during the previous two calendar years was 10 percent or more. This 10 percent ceiling comes into effect whenever the two-year average unemployment rate for all states was above 8.3 percent. Similarly, a floor of 6 percent is used to qualify as a labor surplus area during periods of low national unemployment. The 6 percent floor comes into effect whenever the average unemployment rate for all states during the two-year reference period was 5 percent or less.

The U.S. Department of Labor issues the LSA list each fiscal year. This list is effective October 1 through the following September 30. The reference period used in preparing the current list was January 2012 through December 2013. The national average unemployment rate during this period was 7.77 percent. The qualifying rate for a FY 2014 labor surplus area classification was 9.32 percent or above. This is the first time since 2011 that the qualifying LSA rate is below the ceiling unemployment rate (10 percent).

Some counties that do not qualify have current rates substantially higher than 10 percent. Some of these counties have

experienced both significant and projected long-term increases in unemployment and may be added to the list through an exceptional circumstance petition. The exceptional circumstances provision is a written petition requesting inclusion as a LSA by the state workforce agency to the U.S. Department of Labor's Employment and Training Administration.

The current conditions for exceptional circumstances classification are as follows: an area unemployment rate of at least 9.32 percent for each of the three most recent months, projected unemployment of at least 9.32 percent for each of the next 12 months, and documented information that the exceptional circumstances event has already occurred.

Below is a list of Tennessee areas that have an unemployment rate greater than 9.32 percent and are designated as labor surplus areas from October 1, 2014, through September 30, 2015.

### Eligible Labor Surplus Areas

- |                               |                   |
|-------------------------------|-------------------|
| Benton County                 | Bledsoe County    |
| Campbell County               | Carroll County    |
| Claiborne County              | Clay County       |
| Cocke County                  | Crockett County   |
| Columbia city in Maury County | Dyer County       |
| Cumberland County             | Gibson County     |
| Decatur County                | Grainger County   |
| Fayette County                | Grundy County     |
| Giles County                  | Hardeman County   |
| Greene County                 | Haywood County    |
| Hancock County                | Henry County      |
| Hardin County                 | Jackson County    |
| Henderson County              | Johnson County    |
| Houston County                | Lauderdale County |
| Jefferson County              | Marshall County   |
| Lake County                   | Meigs County      |
| Lewis County                  | Monroe County     |
| McNairy County                | Morristown City   |
| Memphis City                  | Perry County      |
| Morgan County                 | Rhea County       |
| Obion County                  | Stewart County    |
| Pickett County                | Van Buren County  |
| Scott County                  | Weakley County    |
| Tipton County                 | White County      |
| Wayne County                  |                   |

# 2014 Labor Market Report Directory

This is a list of monthly articles that were featured in the 2014 issues of *The Labor Market Report*. The back issues of *The Labor Market Report* are available on our department's Web site at <http://www.tn.gov/labor-wfd/lmr>. You may also request a print copy or PDF file. Contact Wayne Meisels at [wayne.meisels@tn.gov](mailto:wayne.meisels@tn.gov) or Linda Inman at [linda.inman@tn.gov](mailto:linda.inman@tn.gov).

## • JANUARY

**The 2013 LMR Directory.** Similar to this page is a listing of articles published in the 2013 issues of *The Labor Market Report*.

**What is a Labor Surplus Area?** A list of the Tennessee counties that are eligible labor surplus areas in 2014.

## • FEBRUARY

**Fun Facts About Older Americans.** Adapted from a Census Bureau article about the population, education, and income of a growing sector of the population.

## • MARCH

**Annual Average Information, 2011 to 2013.** This article includes three years of updated nonagricultural employment and labor force estimates for Tennessee and the four major metropolitan areas.

## • APRIL

**Population Estimates for Tennessee Cities.** This article is about Census 2010, 2012, and 2013 population estimates for 136 Tennessee cities.

## • MAY

**Median Age of State Resident Population.** This article includes the median age in each state for Census 2000, Census 2010, and 2013.

## • JUNE

**Cost-of-Living Index for First Quarter 2014.** Are you considering a move to a different city? This data shows a comparison of the cost-of-living in Tennessee cities with other cities in the U.S. This allows people to compute annual income needed, when moving, to achieve the same standard of living.

## • JULY

**Unmarried and Single Americans Week.** An acknowledgement of the many never married, divorced, widowed, or partners that reside in the U.S.

**Fun Facts About Hurricane Season.** When is "hurricane season" and how did hurricanes get their names. What were the worst recorded hurricanes?

## • AUGUST

**Per Capita Personal Income and Population.** This article shows the changes in Tennessee per capita income and population, by county, from 2010 to 2012.

## • SEPTEMBER

**Same-Sex Married Couples.** The Census collects relationship data by household. The 2010 Census includes new information collected, by state, for same-sex partners and spousal households.

## • OCTOBER

**Per Capita Personal Income from 1969-2011.** This article shows changes in income for the U.S. and selected Metropolitan Statistical Areas over forty-two years.

## • NOVEMBER

**State Minimum Wages.** While Congress debates increasing the federal minimum wage, states have already increased their minimum wage today and in the future. How would an increase affect the economy?

## • DECEMBER

**Food Stamp History and Coverage.** When did this program start? What are the qualifications to receive food stamps? What is the enrollment and percent of the population, by state, that receives food stamps?

# TENNESSEE CIVILIAN LABOR FORCE 1984 to present

# COUNTY UNEMPLOYMENT RATES

(NUMBERS IN THOUSANDS)

MONTHLY DATA NOT SEASONALLY ADJUSTED

Year and Month	Civilian Labor Force							Unemployed Number	Rate (%)
	Total	Employed					Rate (%)		
		Employment	Nonfarm Employment			Rate (%)			
			Total	**Manu- facturing	**Trade				
1984	2,233.5	2,026.4	1,812.0	497.1	413.3	344.3	207.1	9.3 %	
1985	2,255.7	2,070.0	1,867.8	492.4	435.3	360.2	185.7	8.2	
1986	2,291.3	2,110.7	1,929.8	490.5	452.1	384.7	180.6	7.9	
1987	2,324.1	2,166.5	2,011.6	497.4	477.2	408.9	157.6	6.8	
1988	2,333.6	2,197.2	2,092.1	511.9	495.6	440.3	136.4	5.8	
1989	2,364.9	2,241.3	2,167.2	524.5	508.4	467.2	123.6	5.2	
1990	2,401.1	2,269.0	2,193.2	493.4	379.1	611.0	132.1	5.5	
1991	2,425.4	2,266.0	2,183.6	480.3	373.0	626.7	159.4	6.6	
1992	2,479.5	2,316.7	2,245.0	492.8	374.1	664.8	162.8	6.6	
1993	2,543.3	2,391.6	2,328.5	502.8	382.5	709.8	151.7	6.0	
1994	2,645.7	2,511.1	2,423.0	513.8	398.4	751.4	134.6	5.1	
1995	2,718.0	2,574.0	2,498.9	518.0	412.6	795.0	144.0	5.3	
1996	2,758.4	2,611.0	2,533.3	501.5	420.9	814.3	147.4	5.3	
1997	2,786.1	2,639.2	2,584.0	498.0	430.5	849.7	146.9	5.3	
1998	2,812.4	2,691.5	2,638.4	498.6	437.1	875.7	120.9	4.3	
1999	2,852.4	2,739.2	2,685.3	494.7	443.6	900.8	113.3	4.0	
2000	2,843.1	2,733.3	2,728.9	488.1	447.5	930.9	109.8	3.9	
2001	2,861.3	2,731.0	2,688.3	454.2	446.6	921.5	130.4	4.6	
2002	2,906.6	2,756.1	2,664.4	428.5	438.7	938.0	150.5	5.2	
2003	2,912.2	2,748.1	2,667.5	414.1	440.8	950.3	164.0	5.6	
2004	2,878.7	2,725.1	2,706.1	411.8	447.5	978.7	153.6	5.3	
2005	2,904.8	2,743.4	2,743.1	408.8	454.6	1,005.6	161.4	5.6	
2006	3,036.0	2,878.5	2,783.1	400.1	460.6	1,030.4	157.6	5.2	
2007	3,063.7	2,920.4	2,797.4	380.0	463.5	1,052.8	143.3	4.7	
2008	3,054.8	2,853.7	2,774.8	361.0	457.0	1,058.2	201.0	6.6	
2009	3,052.7	2,733.1	2,619.8	309.2	427.8	1,025.3	319.6	10.5	
2010	3,090.8	2,792.1	2,615.4	298.9	423.5	1,041.2	298.7	9.7	
2011	3,130.1	2,849.7	2,661.4	304.4	427.1	1,076.8	280.4	9.0	
2012	3,110.6	2,868.1	2,714.0	313.4	433.3	1,112.2	242.5	7.8	
2013	3,081.5	2,842.2	2,749.7	318.8	437.2	1,139.2	239.3	7.8	
<b>2014</b>									
December (r)	2,973.3	2,791.6	2,878.4	330.7	458.0	1,196.9	181.7	6.1 %	
<b>2015</b>									
January (p)	3,009.0	2,794.0	2,818.1	330.0	444.0	1,168.2	214.9	7.1 %	
February									
March									
April									
May									
June									
July									
August									
September									
October									
November									
December									

(r)=revised  
 (p)=preliminary  
 Trade = Wholesale and Retail Trade  
 \*\*These industries not comparable to industry employment data before 1990 because of changes to NAICS coding system.  
 Services = Professional/Business Services, Educational/Health Services,

County	Jan	Jan	County	Jan	Jan
	2014	2015		2014	2015
Anderson	6.9	7.3	Lauderdale	10.6	10.7
Bedford	7.5	7.5	Lawrence	8.7	9.1
Benton	9.4	10.0	Lewis	9.6	10.1
Bledsoe	9.3	9.5	Lincoln	5.3	6.2
Blount	6.1	6.7	Loudon	6.8	6.9
Bradley	5.9	6.6	Macon	6.8	6.7
Campbell	10.3	9.6	Madison	7.0	7.5
Cannon	5.8	7.0	Marion	8.4	8.1
Carroll	11.1	11.3	Marshall	6.4	6.9
Carter	7.8	8.2	Mauy	6.2	6.4
Cheatham	5.3	6.0	McMinn	7.9	8.0
Chester	7.2	7.6	McNairy	12.3	10.8
Claiborne	9.7	9.0	Meigs	9.3	9.6
Clay	10.5	12.2	Monroe	8.6	8.1
Coke	11.0	11.4	Montgomery	6.5	7.1
Coffee	6.3	6.7	Moore	5.0	5.9
Crockett	9.0	8.8	Morgan	9.2	9.3
Cumberland	8.8	9.9	Obion	10.2	10.3
Davidson	4.7	5.4	Overton	8.8	9.6
Decatur	10.4	11.0	Perry	9.0	8.4
DeKalb	8.1	8.6	Pickett	10.1	10.9
Dickson	6.3	6.9	Polk	8.7	8.6
Dyer	9.5	8.6	Putnam	6.9	7.2
Fayette	8.1	8.3	Rhea	9.3	8.9
Fentress	8.6	9.3	Roane	7.8	8.0
Franklin	6.0	6.4	Robertson	5.6	6.0
Gibson	9.8	9.3	Rutherford	5.1	5.5
Giles	6.7	6.6	Scott	13.2	12.3
Grainger	9.0	8.5	Sequatchie	7.6	8.0
Greene	8.7	8.9	Sevier	10.0	10.9
Grundy	8.4	10.0	Shelby	8.0	8.1
Hamblen	7.6	7.7	Smith	6.8	7.2
Hamilton	6.3	6.6	Stewart	10.8	9.9
Hancock	10.2	10.3	Sullivan	6.5	7.1
Hardeman	10.1	10.2	Sumner	5.0	5.7
Hardin	10.1	9.3	Tipton	8.7	9.1
Hawkins	7.3	7.8	Trousdale	7.9	7.7
Haywood	10.9	10.8	Unicoi	9.9	10.5
Henderson	9.3	10.2	Union	8.0	8.5
Henry	9.4	9.3	Van Buren	10.9	11.5
Hickman	7.0	6.9	Warren	7.4	7.3
Houston	10.6	10.9	Washington	6.1	6.8
Humphreys	8.3	9.0	Wayne	9.7	10.1
Jackson	9.3	10.2	Weakley	8.5	8.5
Jefferson	8.5	8.8	White	7.9	7.8
Johnson	7.9	8.5	Williamson	4.1	4.8
Knox	5.2	5.7	Wilson	5.1	5.7
Lake	10.8	10.6			

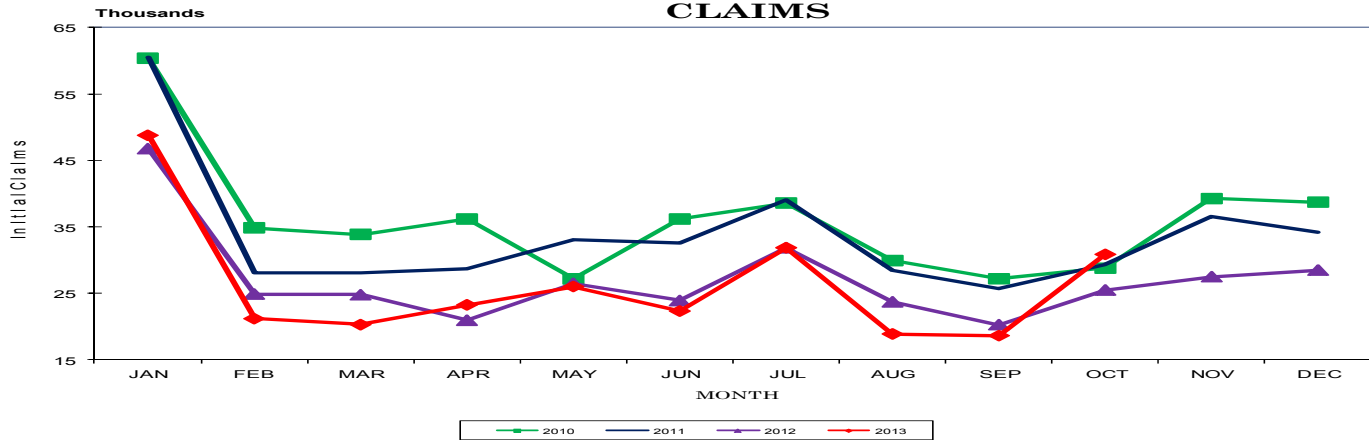
\*Data Not Seasonally Adjusted



# Statewide

## UNEMPLOYMENT INSURANCE ACTIVITIES (MOST RECENT AVAILABLE)

### MONTHLY INITIAL CLAIMS



## BENEFIT PROGRAMS - OCTOBER 2013

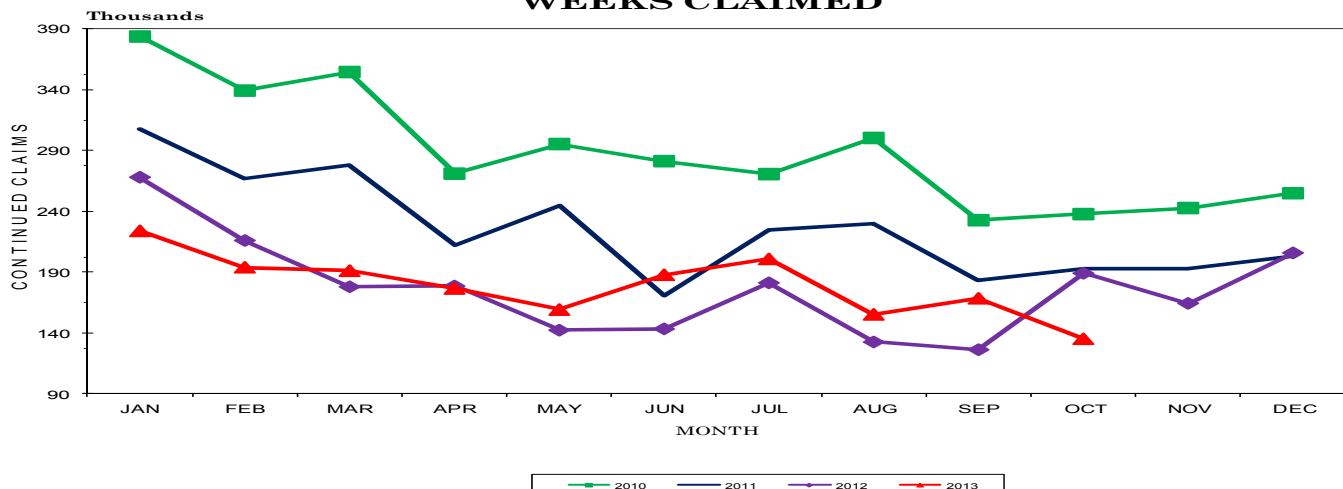
### STATE BENEFIT PROGRAM

### FEDERAL BENEFIT PROGRAMS

CLAIMS	Oct. 2012	Sept. 2013	Oct. 2013	FORMER FEDERAL EMPLOYEES	Oct. 2012	Sept. 2013	Oct. 2013
Initial Claims	25,513	18,652	30,874	Benefits Paid	\$237,731	\$314,992	\$387,037
Continued Weeks Claimed	189,152	168,517	135,227	Benefit Weeks Claimed	827	979	1,208
Nonmonetary Determinations	7,876	5,434	8,361	Initial Claims	88	91	937
Appeals Decisions	2,406	2,179	2,015	Continued Weeks Claimed	784	1,110	1,008
Lower Authority	1,923	1,880	1,725	Appeals Decisions	14	9	9
Higher Authority	483	299	290				
BENEFITS				FORMER MILITARY PERSONNEL			
Amount Paid	\$36,244,719	\$29,109,096	\$32,306,560	Benefits Paid	\$653,116	\$465,743	\$473,494
Benefit Weeks Paid	178,954	132,072	136,256	Benefit Weeks Claimed	2,101	1,480	1,524
Average Weekly Benefit Amount	\$238	\$241	\$239	Initial Claims	210	146	232
First Payments	11,452	7,250	8,642	Continued Weeks Claimed	1,905	1,622	1,391
Final Payments	6,138	4,784	4,307	Appeals Decisions	10	7	8
Average Weeks Duration	16	15	15				
Trust Fund Balance	\$602,383,379	\$782,760,071	\$793,523,764				

## CONTINUED WEEKS CLAIMED - OCTOBER 2013

### MONTHLY CONTINUED WEEKS CLAIMED



# Statewide

## ESTIMATED NONFARM EMPLOYMENT (in thousands)

Industry	January 2014	Revised December 2014	Preliminary January 2015	Net Change	
				Jan. Jan. 2015	Dec. Jan. 2014
<b>Total Nonfarm</b>	<b>2,749.1</b>	<b>2,878.4</b>	<b>2,818.1</b>	<b>69.0</b>	<b>-60.3</b>
<b>Total Private</b>	<b>2,323.6</b>	<b>2,442.9</b>	<b>2,391.0</b>	<b>67.4</b>	<b>-51.9</b>
<b>Goods Producing</b>	<b>424.7</b>	<b>445.9</b>	<b>440.1</b>	<b>15.4</b>	<b>-5.8</b>
Mining, Logging, & Construction	103.7	115.2	110.1	6.4	-5.1
Manufacturing	321.0	330.7	330.0	9.0	-0.7
Durable Goods Manufacturing	202.4	210.2	209.9	7.5	-0.3
Wood Product Manufacturing	10.9	11.4	11.3	0.4	-0.1
Nonmetallic Mineral Product Manufacturing	11.8	11.8	11.7	-0.1	-0.1
Primary Metal Manufacturing	10.0	10.2	10.2	0.2	0.0
Fabricated Metal Product Manufacturing	34.0	34.7	35.2	1.2	0.5
Machinery Manufacturing	25.3	26.7	26.5	1.2	-0.2
Computer & Electronic Product Manufacturing	5.0	5.0	5.0	0.0	0.0
Electrical Equipment & Appliance Manufacturing	19.5	19.8	19.7	0.2	-0.1
Transportation Equipment Manufacturing	62.6	66.4	66.2	3.6	-0.2
Furniture & Related Product Manufacturing	9.0	9.2	9.2	0.2	0.0
Miscellaneous Manufacturing Durable Goods	14.3	15.0	14.9	0.6	-0.1
Nondurable Goods Manufacturing	118.6	120.5	120.1	1.5	-0.4
Textile Mills, Products, & Apparel	10.3	9.8	9.6	-0.7	-0.2
Food Manufacturing	32.4	33.2	32.8	0.4	-0.4
Beverage & Tobacco Product Manufacturing	5.3	5.4	5.4	0.1	0.0
Paper Manufacturing	14.4	14.4	14.3	-0.1	-0.1
Printing & Related Support Activities	9.6	9.3	9.2	-0.4	-0.1
Chemical Manufacturing	25.1	25.4	25.2	0.1	-0.2
Plastics & Rubber Products Manufacturing	20.0	21.2	21.2	1.2	0.0
Plastics Product Manufacturing	11.6	12.4	12.4	0.8	0.0
Rubber Product Manufacturing	8.4	8.8	8.8	0.4	0.0
Service Providing	2,324.4	2,432.5	2,378.0	53.6	-54.5
Trade, Transportation, & Utilities	579.2	613.2	596.2	17.0	-17.0
Wholesale Trade	121.2	124.4	123.5	2.3	-0.9
Merchant Wholesalers, Durable Goods	62.1	64.0	63.3	1.2	-0.7
Merchant Wholesalers, Nondurable Goods	40.0	40.0	40.4	0.4	0.4
Wholesale Electronic Markets	19.1	20.4	19.8	0.7	-0.6
Retail Trade	314.3	333.6	320.5	6.2	-13.1
Motor Vehicle & Parts Dealers	41.1	42.8	42.6	1.5	-0.2
Furniture & Home Furnishings Stores	8.8	9.3	8.9	0.1	-0.4
Building Material, Garden Equipment, & Supplies	25.8	26.1	25.2	-0.6	-0.9
Food & Beverage Stores	52.4	54.6	54.0	1.6	-0.6
Health & Personal Care Stores	22.7	23.8	23.1	0.4	-0.7
Gasoline Stations	21.0	22.3	22.2	1.2	-0.1
Clothing & Clothing Accessories Stores	24.4	27.3	23.7	-0.7	-3.6
Sporting Goods, Hobby, Book, & Music Stores	11.2	13.5	12.0	0.8	-1.5
General Merchandise Stores	70.1	75.9	70.0	-0.1	-5.9
Miscellaneous Store Retailers	16.5	17.7	16.9	0.4	-0.8
Nonstore Retailers	8.8	9.6	9.1	0.3	-0.5
Transportation, Warehousing, & Utilities	143.7	155.2	152.2	8.5	-3.0
Utilities	3.4	3.4	3.4	0.0	0.0
Transportation & Warehousing	140.3	151.8	148.8	8.5	-3.0
Truck Transportation	54.8	58.3	57.4	2.6	-0.9
Information	43.6	44.5	44.2	0.6	-0.3
Financial Activities	138.9	142.4	142.3	3.4	-0.1
Finance & Insurance	106.0	107.3	107.7	1.7	0.4
Real Estate, Rental, & Leasing	32.9	35.1	34.6	1.7	-0.5
Professional & Business Services	359.5	388.1	374.7	15.2	-13.4
Professional, Scientific, & Technical Services	118.0	124.5	127.1	9.1	2.6
Management of Companies & Enterprises	37.3	39.3	38.4	1.1	-0.9
Administrative, Support, & Waste Management	204.2	224.3	209.2	5.0	-15.1
Educational & Health Services	397.5	409.1	404.3	6.8	-4.8
Educational Services	52.9	56.8	53.5	0.6	-3.3
Health Care & Social Assistance	344.6	352.3	350.8	6.2	-1.5
Ambulatory Health Care Services	137.5	141.4	139.7	2.2	-1.7
Hospitals	100.3	101.6	101.5	1.2	-0.1
Nursing & Residential Care Facilities	60.1	61.9	61.5	1.4	-0.4
Social Assistance	46.7	47.4	48.1	1.4	0.7
Leisure & Hospitality	276.0	294.9	286.0	10.0	-8.9
Arts, Entertainment, & Recreation	26.0	27.7	25.8	-0.2	-1.9
Accommodation & Food Services	250.0	267.2	260.2	10.2	-7.0
Accommodation	31.4	32.5	31.5	0.1	-1.0
Food Services & Drinking Places	218.6	234.7	228.7	10.1	-6.0
Other Services	104.2	104.8	103.2	-1.0	-1.6
Government	425.5	435.5	427.1	1.6	-8.4
Federal Government	48.9	48.1	47.7	-1.2	-0.4
State Government	90.7	97.0	92.8	2.1	-4.2
State Government Educational Services	48.8	55.4	50.2	1.4	-5.2
Local Government	285.9	290.4	286.6	0.7	-3.8
Local Government Educational Services	144.2	147.7	145.9	1.7	-1.8

## NONFARM EMPLOYMENT & LABOR FORCE NARRATIVE

Total nonfarm employment increased by 69,000 jobs from January 2014 to January 2015. There were large increases in professional/business services (up 15,200 jobs), which includes increases of 9,100 jobs in professional/scientific/technical services and 5,000 jobs in administrative/support/waste management; food services/drinking places (up 10,100); and transportation/warehousing (up 8,500 jobs), which includes an increase of 2,600 jobs in truck transportation. There were smaller increases in mining/logging/construction (up 6,400 jobs); retail trade (up 6,200 jobs), which includes increases of 1,600 jobs in food/beverage stores, 1,500 jobs in motor vehicle/parts dealers, and 1,200 jobs in gasoline stations; health care/social assistance (up 6,200 jobs), which includes increases of 2,200 jobs in ambulatory health care services and 1,400 jobs in both social assistance and nursing/residential care facilities; transportation equipment manufacturing (up 3,600 jobs); and financial activities (up 3,400 jobs). These decreases were partially offset by declines of 1,200 jobs in federal government and 1,000 jobs in other services.

During January 2015, nonfarm employment decreased by 60,300 jobs. There were large declines in administrative/support/waste management (down 15,100 jobs) and retail trade (down 13,100 jobs), which includes declines of 5,900 jobs in general merchandise stores, 3,600 jobs in clothing/clothing accessories stores, and 1,500 jobs in sporting goods/hobby/book/music stores. There were smaller decreases in food services/drinking places (down 6,000 jobs); state government educational services (down 5,200 jobs); mining/logging/construction (down 5,100 jobs); educational/health services (down 4,800 jobs), which includes a decline of 3,300 jobs in educational services; local government (down 3,800 jobs); transportation/warehousing (down 3,000 jobs); arts/entertainment/recreation (down 1,900 jobs); and other services (down 1,600 jobs). These decreases were partially offset by an increase of 2,600 jobs in professional/scientific/technical services.

Tennessee's seasonally adjusted estimated unemployment rate for January 2015 was 6.7 percent, up 0.1 percentage point from the revised December 2014 rate. The United States unemployment rate in January was 5.7 percent, up 0.2 percentage point from the revised December 2014 rate.

In January 2014, the national unemployment rate was 6.6 percent while the state rate was unchanged at 6.7 percent.

Across Tennessee, the unemployment rate increased in all 95 counties. There were 23 counties that had a rate greater than 10 percent compared with four counties in December. In January 2015, the lowest rate was in Williamson County at 4.8 percent, up 0.7 percentage point from the previous month, while the highest rate was in Scott County at 12.3 percent, up from 11.2 percent in December.

The data from all the nonfarm employment estimates tables include all full- and part-time nonfarm wage and salary employees who worked during or received pay for any part of the pay period that includes the 12th of the month. This is a count of jobs by place of work. Agricultural workers, proprietors, self-employed persons, workers in private households, and unpaid family workers are excluded. These numbers may not add due to rounding. Data are based on the 2014 benchmark.

# CIVILIAN LABOR FORCE

## CIVILIAN LABOR FORCE SUMMARY

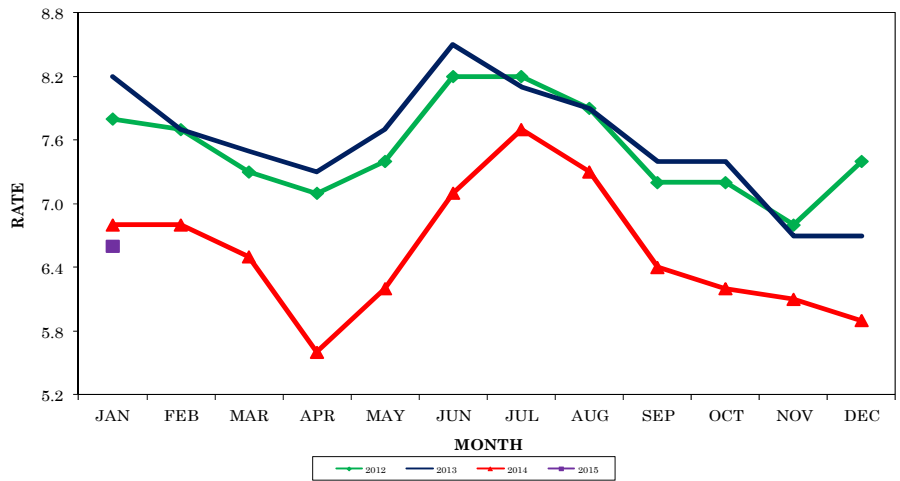
January 2014				December 2014				January 2015				
Labor Force	Employment	Unemployed	Rate	Labor Force	Employment	Unemployed	Rate	Labor Force	Employment	Unemployed	Rate	
<b>Seasonally Adjusted</b>												
U.S.	155,486,000	145,206,000	10,280,000	6.6	156,129,000	147,442,000	8,688,000	5.6	157,180,000	148,201,000	8,979,000	5.7
TENNESSEE	3,010,100	2,809,700	200,400	6.7	2,982,600	2,786,300	196,400	6.6	3,012,000	2,810,300	201,700	6.7
<b>Not Seasonally Adjusted</b>												
U.S.	154,381,000	143,526,000	10,855,000	7.0	155,521,000	147,190,000	8,331,000	5.4	156,050,000	146,552,000	9,498,000	6.1
TENNESSEE	3,000,600	2,797,200	203,400	6.8	2,973,300	2,791,600	181,700	6.1	3,009,000	2,794,000	214,900	7.1
<b>Metropolitan Statistical Areas</b>												
Chattanooga	249,110	232,740	16,370	6.6	246,430	231,980	14,450	5.9	248,550	232,210	16,340	6.6
Clarksville	107,530	99,770	7,760	7.2	107,540	101,050	6,480	6.0	107,240	99,720	7,520	7.0
Cleveland	56,240	52,710	3,530	6.3	54,600	51,420	3,190	5.8	54,830	51,050	3,780	6.9
Jackson	61,010	56,600	4,410	7.2	60,120	56,220	3,900	6.5	60,520	55,870	4,650	7.7
Johnson City	87,890	81,830	6,060	6.9	86,940	81,430	5,510	6.3	88,220	81,620	6,600	7.5
Kingsport	139,130	129,850	9,290	6.7	136,620	128,590	8,030	5.9	138,550	129,250	9,300	6.7
Knoxville	396,760	372,410	24,340	6.1	394,710	372,570	22,150	5.6	399,280	373,210	26,070	6.5
Memphis	607,940	560,000	47,940	7.9	602,260	559,880	42,380	7.0	607,140	559,090	48,050	7.9
Morristown	48,940	45,020	3,920	8.0	48,420	45,150	3,260	6.7	48,930	44,900	4,020	8.2
Nashville	892,930	848,200	44,730	5.0	896,880	854,200	42,680	4.8	903,980	853,650	50,330	5.6
<b>Micropolitan Statistical Areas</b>												
Athens	22,020	20,280	1,740	7.9	21,870	20,350	1,520	7.0	22,260	20,480	1,780	8.0
Cookeville	45,290	41,890	3,400	7.5	44,780	41,860	2,930	6.5	45,740	42,100	3,640	8.0
Crossville	22,660	20,670	1,980	8.8	22,250	20,380	1,870	8.4	22,580	20,340	2,240	9.9
*Dayton	13,200	11,970	1,230	9.3	12,860	11,840	1,020	7.9	13,110	11,950	1,160	8.9
Dyersburg	16,410	14,850	1,560	9.5	16,220	15,010	1,210	7.5	16,590	15,160	1,430	8.6
Greeneville	29,960	27,370	2,590	8.7	29,350	27,040	2,300	7.8	29,880	27,220	2,660	8.9
Lawrenceburg	17,530	16,000	1,530	8.7	17,180	15,860	1,330	7.7	17,570	15,970	1,600	9.1
Lewisburg	14,250	13,340	910	6.4	14,170	13,330	840	5.9	14,410	13,420	1,000	6.9
Martin	16,060	14,690	1,370	8.5	15,420	14,280	1,140	7.4	15,730	14,400	1,330	8.5
McMinnville	17,040	15,780	1,250	7.4	16,530	15,510	1,030	6.2	16,880	15,650	1,230	7.3
Newport	14,400	12,820	1,580	11.0	14,040	12,800	1,230	8.8	14,360	12,710	1,640	11.4
Paris	13,820	12,520	1,300	9.4	13,510	12,450	1,060	7.8	13,850	12,560	1,290	9.3
Sevierville	47,380	42,620	4,760	10.0	47,010	43,920	3,090	6.6	47,900	42,690	5,210	10.9
Shelbyville	19,150	17,720	1,430	7.5	18,920	17,690	1,240	6.5	19,280	17,830	1,450	7.5
Tullahoma	47,070	44,200	2,870	6.1	46,490	43,910	2,590	5.6	47,130	44,070	3,070	6.5
Union City	15,220	13,680	1,550	10.2	14,730	13,420	1,310	8.9	15,100	13,600	1,500	9.9
<b>Cities</b>												
Bartlett	29,390	27,670	1,720	5.8	29,050	27,480	1,570	5.4	29,250	27,510	1,750	6.0
Brentwood	19,010	18,230	770	4.1	19,140	18,350	790	4.1	19,250	18,330	920	4.8
Bristol	11,580	10,810	770	6.6	11,320	10,640	670	6.0	11,450	10,700	750	6.6
Chattanooga	77,770	72,360	5,410	7.0	76,620	71,820	4,800	6.3	77,840	72,090	5,750	7.4
Clarksville	56,310	52,600	3,700	6.6	56,610	53,060	3,550	6.3	56,620	52,550	4,070	7.2
Cleveland	19,890	18,730	1,160	5.9	19,430	18,260	1,160	6.0	19,440	18,130	1,310	6.7
Collierville	23,230	22,030	1,200	5.2	22,950	21,880	1,070	4.7	23,190	21,900	1,290	5.6
Columbia	15,790	14,690	1,100	6.9	15,810	14,800	1,020	6.4	15,990	14,790	1,200	7.5
Cookeville	12,640	11,790	850	6.7	12,640	11,860	780	6.2	12,860	11,910	940	7.3
Franklin	36,550	35,090	1,470	4.0	36,790	35,310	1,480	4.0	36,960	35,260	1,700	4.6
Gallatin	15,640	14,850	800	5.1	15,750	14,950	800	5.1	15,890	14,930	960	6.0
Germantown	19,000	18,140	870	4.6	18,890	18,010	880	4.7	19,040	18,030	1,010	5.3
Hendersonville	28,280	26,910	1,380	4.9	28,420	27,090	1,330	4.7	28,520	27,060	1,470	5.1
Jackson	30,480	28,260	2,220	7.3	30,120	28,070	2,050	6.8	30,280	27,870	2,410	8.0
Johnson City	29,790	28,030	1,750	5.9	29,620	27,900	1,710	5.8	30,080	27,970	2,110	7.0
Kingsport	22,410	21,030	1,380	6.2	22,070	20,710	1,360	6.2	22,390	20,810	1,580	7.1
Knoxville	91,020	85,610	5,410	5.9	90,630	85,660	4,970	5.5	91,720	85,780	5,940	6.5
LaVergne	17,140	16,200	940	5.5	17,310	16,330	990	5.7	17,430	16,320	1,110	6.3
Lebanon	12,580	11,850	740	5.9	12,620	11,930	690	5.5	12,840	11,930	910	7.1
Maryville	12,820	12,080	740	5.8	12,770	12,090	680	5.3	12,900	12,110	800	6.2
Memphis	286,500	260,960	25,540	8.9	281,940	259,120	22,820	8.1	285,100	259,400	25,700	9.0
Morristown	11,110	10,120	990	8.9	11,000	10,150	850	7.7	11,080	10,090	990	9.0
*Mount Juliet	14,250	13,550	700	4.9	14,310	13,650	660	4.6	14,400	13,650	750	5.2
Murfreesboro	61,550	58,390	3,170	5.1	61,720	58,850	2,870	4.7	62,360	58,830	3,530	5.7
Nashville	349,570	332,980	16,590	4.7	351,800	335,380	16,420	4.7	353,980	335,000	18,980	5.4
Oak Ridge	13,770	12,930	850	6.1	13,670	12,930	740	5.4	13,850	12,950	910	6.5
Smyrna	22,210	21,020	1,200	5.4	22,230	21,180	1,050	4.7	22,410	21,170	1,230	5.5
Spring Hill	16,540	15,790	750	4.5	16,560	15,900	660	4.0	16,640	15,880	760	4.6

\*2010 Census changes: Micropolitan Areas-Dayton added and Brownsville, Columbia, Harriman, Humboldt, LaFollette deleted. Cities: Mount Juliet added.

Total nonfarm employment decreased by 4,000 jobs from December 2014 to January 2015. There were seasonal declines in retail trade (down 1,200 jobs), leisure/hospitality (down 900 jobs), professional/business services (down 600 jobs), and local government, state government, and mining/logging/construction (each down 400 jobs). This was partially offset by an increase of 300 jobs in financial activities.

During the past 12 months, nonfarm employment increased by 5,300 jobs. During the year, goods-producing jobs increased by 600 while service-providing industries jobs increased by 4,700.

**CHATTANOOGA MSA  
UNEMPLOYMENT RATES**  
(NOT SEASONALLY ADJUSTED)



**ESTIMATED NONFARM EMPLOYMENT (in thousands)**

Industry	January	Revised	Preliminary	Net Change	
	2014	December 2014	January 2015	Jan. 2014 Jan. 2015	Dec. 2014 Jan. 2015
Total Nonfarm	234.3	243.6	<b>239.6</b>	5.3	-4.0
Total Private	198.1	206.8	<b>203.6</b>	5.5	-3.2
Goods Producing	38.8	39.8	<b>39.4</b>	0.6	-0.4
Mining, Logging, & Construction	8.6	9.0	<b>8.6</b>	0.0	-0.4
Manufacturing	30.2	30.8	<b>30.8</b>	0.6	0.0
Durable Goods Manufacturing	15.9	16.4	<b>16.4</b>	0.5	0.0
Nondurable Goods Manufacturing	14.3	14.4	<b>14.4</b>	0.1	0.0
Service Providing	195.5	203.8	<b>200.2</b>	4.7	-3.6
Trade, Transportation, & Utilities	49.3	51.5	<b>50.1</b>	0.8	-1.4
Wholesale Trade	8.6	8.7	<b>8.6</b>	0.0	-0.1
Retail Trade	25.2	26.7	<b>25.5</b>	0.3	-1.2
Transportation, Warehousing, & Utilities	15.5	16.1	<b>16.0</b>	0.5	-0.1
Information	2.8	2.9	<b>2.9</b>	0.1	0.0
Financial Activities	14.0	14.0	<b>14.3</b>	0.3	0.3
Professional & Business Services	26.0	28.1	<b>27.5</b>	1.5	-0.6
Educational & Health Services	32.3	33.7	<b>33.6</b>	1.3	-0.1
Leisure & Hospitality	24.2	26.3	<b>25.4</b>	1.2	-0.9
Other Services	10.7	10.5	<b>10.4</b>	-0.3	-0.1
Government	36.2	36.8	<b>36.0</b>	-0.2	-0.8
Federal Government	6.2	6.1	<b>6.1</b>	-0.1	0.0
State Government	6.1	6.8	<b>6.4</b>	0.3	-0.4
Local Government	23.9	23.9	<b>23.5</b>	-0.4	-0.4

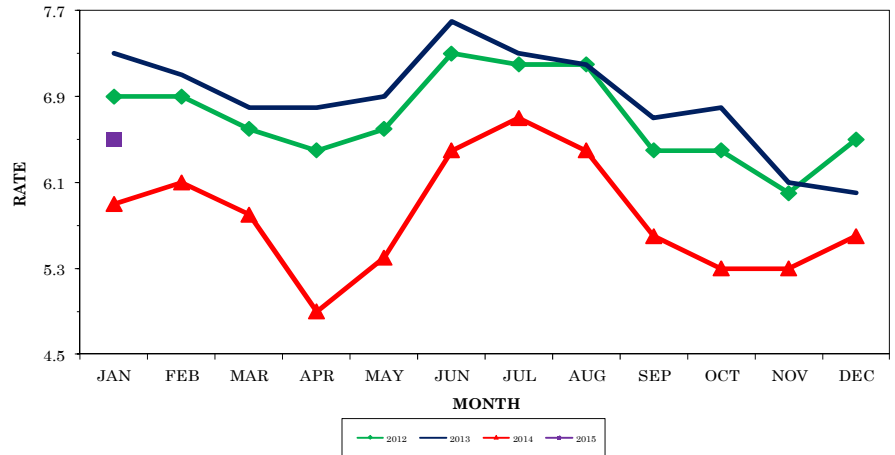


## Knoxville MSA -Anderson, Blount, Campbell, Grainger, Knox, Loudon, Morgan, Roane, Union

Total nonfarm employment decreased by 7,400 jobs from December 2014 to January 2015. There were decreases in trade transportation/utilities (down 2,100 jobs), which includes a decline of 1,600 jobs in retail trade, 300 jobs in transportation/warehousing/utilities, and 200 jobs in wholesale trade; professional/business services (down 1,700 jobs); mining/logging/construction (down 1,500 jobs); leisure/hospitality (down 700 jobs); local government (down 600 jobs); and state government and educational/health services (both down 400 jobs). This was offset by an increase in durable goods manufacturing (up 300 jobs).

Over the past 12 months, nonfarm employment increased by 10,800 jobs. During that time, goods-producing jobs increased by 1,500 jobs, while service-providing jobs increased by 9,300.

### KNOXVILLE MSA UNEMPLOYMENT RATES (NOT SEASONALLY ADJUSTED)



### ESTIMATED NONFARM EMPLOYMENT (in thousands)

Industry	January	Revised	Preliminary	Net Change	
	2014	December 2014	January 2015	Jan. 2014	Dec. 2014
				Jan. 2015	Jan. 2015
Total Nonfarm	367.8	386.0	<b>378.6</b>	10.8	-7.4
Total Private	308.2	322.7	<b>316.3</b>	8.1	-6.4
Goods Producing	50.7	53.4	<b>52.2</b>	1.5	-1.2
Mining, Logging, & Construction	15.9	18.0	<b>16.5</b>	0.6	-1.5
Manufacturing	34.8	35.4	<b>35.7</b>	0.9	0.3
Durable Goods Manufacturing	25.5	26.1	<b>26.4</b>	0.9	0.3
Nondurable Goods Manufacturing	9.3	9.3	<b>9.3</b>	0.0	0.0
Service Providing	317.1	332.6	<b>326.4</b>	9.3	-6.2
Trade, Transportation, & Utilities	74.6	79.5	<b>77.4</b>	2.8	-2.1
Wholesale Trade	16.3	16.5	<b>16.3</b>	0.0	-0.2
Retail Trade	45.1	48.5	<b>46.9</b>	1.8	-1.6
Transportation, Warehousing, & Utilities	13.2	14.5	<b>14.2</b>	1.0	-0.3
Information	5.8	5.8	<b>5.7</b>	-0.1	-0.1
Financial Activities	17.9	17.8	<b>17.7</b>	-0.2	-0.1
Professional & Business Services	57.5	61.8	<b>60.1</b>	2.6	-1.7
Educational & Health Services	49.7	51.7	<b>51.3</b>	1.6	-0.4
Leisure & Hospitality	37.8	38.6	<b>37.9</b>	0.1	-0.7
Other Services	14.2	14.1	<b>14.0</b>	-0.2	-0.1
Government	59.6	63.3	<b>62.3</b>	2.7	-1.0
Federal Government	5.4	5.5	<b>5.5</b>	0.1	0.0
State Government	19.1	21.7	<b>21.3</b>	2.2	-0.4
Local Government	35.1	36.1	<b>35.5</b>	0.4	-0.6



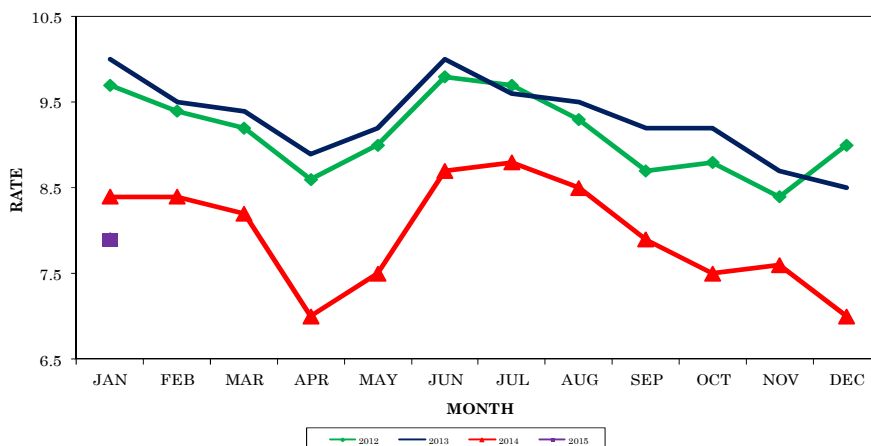
# Memphis MSA - TN - Fayette, Shelby, Tipton AR - Crittenden

MS - Benton, DeSoto, Marshall, Tate, Tunica

Total nonfarm employment declined by 12,300 jobs from December 2014 to January 2015. There were seasonal decreases in professional/business services (down 4,900 jobs), which included a decline of 6,000 jobs in administrative/support/waste management; trade/transportation/utilities (down 2,300 jobs), which included a drop of 1,200 jobs in retail trade and 900 jobs in transportation/warehousing/utilities; leisure/hospitality (down 1,400 jobs); government (down 1,200 jobs), which includes declines of 700 jobs in state government and 300 jobs in local government; mining/logging/construction (down 1,000 jobs); and durable and nondurable goods manufacturing (both down 400 jobs). These were partially offset by an increase of 1,100 jobs in professional/scientific/technical services.

During the past 12 months, nonfarm employment increased by 11,900 jobs with the entire increase in service-providing jobs.

## MEMPHIS MSA UNEMPLOYMENT RATES (NOT SEASONALLY ADJUSTED)



## ESTIMATED NONFARM EMPLOYMENT (in thousands)

Industry	January	Revised	Preliminary	Net Change	
	2014	December 2014	January 2015	Jan. 2014 Jan. 2015	Dec. 2014 Jan. 2015
Total Nonfarm	604.0	628.2	<b>615.9</b>	11.9	-12.3
Total Private	519.6	544.5	<b>533.4</b>	13.8	-11.1
Goods Producing	64.6	66.4	<b>64.6</b>	0.0	-1.8
Mining, Logging, & Construction	20.5	21.6	<b>20.6</b>	0.1	-1.0
Manufacturing	44.1	44.8	<b>44.0</b>	-0.1	-0.8
Durable Goods Manufacturing	23.5	24.3	<b>23.9</b>	0.4	-0.4
Nondurable Goods Manufacturing	20.6	20.5	<b>20.1</b>	-0.5	-0.4
Service Providing	539.4	561.8	<b>551.3</b>	11.9	-10.5
Trade, Transportation, & Utilities	161.1	169.9	<b>167.6</b>	6.5	-2.3
Wholesale Trade	33.2	33.7	<b>33.5</b>	0.3	-0.2
Retail Trade	64.4	67.5	<b>66.3</b>	1.9	-1.2
Transportation, Warehousing, & Utilities	63.5	68.7	<b>67.8</b>	4.3	-0.9
Information	6.0	6.1	<b>6.0</b>	0.0	-0.1
Financial Activities	27.1	27.8	<b>27.7</b>	0.6	-0.1
Professional & Business Services	88.6	99.6	<b>94.7</b>	6.1	-4.9
Professional, Scientific, & Technical Services	21.5	22.7	<b>23.8</b>	2.3	1.1
Management of Companies & Enterprises	6.6	6.9	<b>6.9</b>	0.3	0.0
Administrative, Support, & Waste Management	60.5	70.0	<b>64.0</b>	3.5	-6.0
Educational & Health Services	86.4	88.1	<b>87.9</b>	1.5	-0.2
Leisure & Hospitality	62.1	63.0	<b>61.6</b>	-0.5	-1.4
Other Services	23.7	23.6	<b>23.3</b>	-0.4	-0.3
Government	84.4	83.7	<b>82.5</b>	-1.9	-1.2
Federal Government	14.1	13.5	<b>13.3</b>	-0.8	-0.2
State Government	13.8	13.5	<b>12.8</b>	-1.0	-0.7
Local Government	56.5	56.7	<b>56.4</b>	-0.1	-0.3

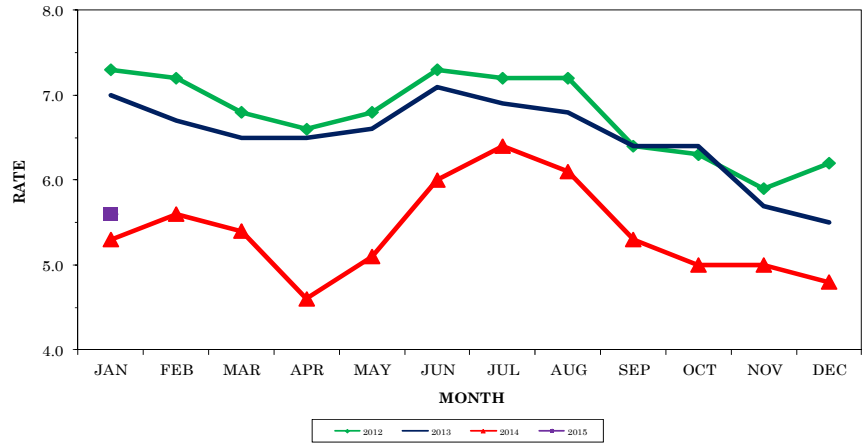


## Nashville MSA — Cannon, Cheatham, Davidson, Dickson, Hickman, Macon, Maury, Robertson, Rutherford, Smith, Sumner, Trousdale, Williamson, Wilson

Total nonfarm employment declined by 19,100 jobs from December 2014 to January 2015. There were seasonal decreases in trade/transportation/utilities (down 6,400 jobs), which includes a decline of 5,000 jobs in retail trade and 900 jobs in transportation/warehousing/utilities; administrative/support/waste management (down 4,200 jobs); leisure/hospitality (down 3,600 jobs); state government (down 1,400 jobs); other services (down 1,300 jobs); educational/health services (down 1,100 jobs), which includes a drop of 700 jobs in educational services; local government (down 800 jobs); and mining/logging/construction (down 600 jobs). These decreases were partially offset by an increase in professional/scientific/technical services (up 1,100 jobs).

During the past 12 months, nonfarm employment increased by 29,100 jobs. During that time, goods-producing jobs increased by 6,600, while service-providing jobs increased by 22,500.

### NASHVILLE MSA UNEMPLOYMENT RATES (NOT SEASONALLY ADJUSTED)



### ESTIMATED NONFARM EMPLOYMENT (in thousands)

Industry	January	Revised	Preliminary	Net Change	
	2014	December 2014	January 2015	Jan. 2014 Jan. 2015	Dec. 2014 Jan. 2015
Total Nonfarm	851.2	899.4	<b>880.3</b>	29.1	-19.1
Total Private	739.8	785.2	<b>768.3</b>	28.5	-16.9
Goods Producing	109.5	117.0	<b>116.1</b>	6.6	-0.9
Mining, Logging, & Construction	32.5	37.2	<b>36.6</b>	4.1	-0.6
Manufacturing	77.0	79.8	<b>79.5</b>	2.5	-0.3
Durable Goods Manufacturing	54.6	57.2	<b>57.0</b>	2.4	-0.2
Nondurable Goods Manufacturing	22.4	22.6	<b>22.5</b>	0.1	-0.1
Service Providing	741.7	782.4	<b>764.2</b>	22.5	-18.2
Trade, Transportation, & Utilities	168.6	181.3	<b>174.9</b>	6.3	-6.4
Wholesale Trade	41.5	42.8	<b>42.3</b>	0.8	-0.5
Retail Trade	90.0	97.3	<b>92.3</b>	2.3	-5.0
Transportation, Warehousing, & Utilities	37.1	41.2	<b>40.3</b>	3.2	-0.9
Information	20.5	20.8	<b>20.7</b>	0.2	-0.1
Financial Activities	54.7	56.7	<b>56.5</b>	1.8	-0.2
Professional & Business Services	128.4	138.3	<b>135.0</b>	6.6	-3.3
Professional, Scientific, & Technical Services	49.4	54.4	<b>55.5</b>	6.1	1.1
Management of Companies & Enterprises	16.1	17.3	<b>17.1</b>	1.0	-0.2
Administrative, Support, & Waste Management	62.9	66.6	<b>62.4</b>	-0.5	-4.2
Educational & Health Services	133.2	138.5	<b>137.4</b>	4.2	-1.1
Educational Services	24.6	25.9	<b>25.2</b>	0.6	-0.7
Health Care & Social Assistance	108.6	112.6	<b>112.2</b>	3.6	-0.4
Leisure & Hospitality	88.8	95.2	<b>91.6</b>	2.8	-3.6
Other Services	36.1	37.4	<b>36.1</b>	0.0	-1.3
Government	111.4	114.2	<b>112.0</b>	0.6	-2.2
Federal Government	12.5	12.6	<b>12.6</b>	0.1	0.0
State Government	27.7	29.6	<b>28.2</b>	0.5	-1.4
Local Government	71.2	72.0	<b>71.2</b>	0.0	-0.8

## Nonfarm Employment (Smaller MSAs)

	Clarksville, TN-KY MSA		Cleveland, TN MSA		Jackson, TN MSA	
	Dec. 2014 Revised	Jan. 2015 Prelim.	Dec. 2014 Revised	Jan. 2015 Prelim.	Dec. 2014 Revised	Jan. 2015 Prelim.
Total Nonfarm	89,300	86,400	46,500	44,900	66,300	64,600
Total Private	69,000	67,300	40,500	39,100	52,800	51,300
Goods Producing	13,300	12,900	10,800	10,700	12,600	12,400
Mining, Logging, & Construction	3,200	2,700	1,900	1,800	2,900	2,700
Manufacturing	10,100	10,200	8,900	8,900	9,700	9,700
Service Providing	76,000	73,500	35,700	34,200	53,700	52,200
Trade, Transportation, & Utilities	16,400	15,700	9,100	8,900	13,400	12,900
Wholesale Trade	N.A.	N.A.	800	800	3,200	3,200
Retail Trade	11,800	11,400	5,500	5,400	8,100	7,800
Transportation, Warehousing, & Utilities	2,400	2,400	2,800	2,700	2,100	1,900
Information	1,200	1,200	300	300	600	600
Financial Activities	3,100	3,100	1,400	1,400	1,900	1,900
Professional & Business Services	9,300	9,000	6,400	5,800	6,700	6,500
Educational & Health Services	11,600	11,500	6,100	5,900	10,300	9,800
Leisure & Hospitality	11,100	10,900	4,300	4,100	5,600	5,500
Other Services	3,000	3,000	2,100	2,000	1,700	1,700
Government	20,300	19,100	6,000	5,800	13,500	13,300
Federal Government	6,000	5,900	300	300	500	500
State Government	3,700	3,000	800	600	1,900	1,700
Local Government	10,600	10,200	4,900	4,900	11,100	11,100

	Johnson City, TN MSA		Kingsport-Bristol, TN-VA MSA		Morristown, TN MSA	
	Dec. 2014 Revised	Jan. 2015 Prelim.	Dec. 2014 Revised	Jan. 2015 Prelim.	Dec. 2014 Revised	Jan. 2015 Prelim.
Total Nonfarm	79,100	77,500	122,800	121,200	44,700	43,200
Total Private	62,300	61,800	105,900	104,800	38,000	36,600
Goods Producing	10,100	10,100	28,300	27,900	12,300	11,900
Mining, Logging, & Construction	2,500	2,400	6,600	6,400	1,900	1,700
Manufacturing	7,600	7,700	21,700	21,500	10,400	10,200
Service Providing	69,000	67,400	94,500	93,300	32,400	31,300
Trade, Transportation, & Utilities	13,800	13,300	25,700	25,200	10,300	10,000
Wholesale Trade	2,300	2,200	4,700	4,700	2,000	2,000
Retail Trade	10,500	10,100	16,000	15,600	5,800	5,600
Transportation, Warehousing, & Utilities	1,000	1,000	5,000	4,900	2,500	2,400
Information	1,500	1,500	2,000	2,000	300	300
Financial Activities	3,900	3,900	3,600	3,600	1,100	1,100
Professional & Business Services	8,500	8,500	10,000	9,800	3,400	3,300
Educational & Health Services	13,100	13,200	18,900	18,900	5,500	5,000
Leisure & Hospitality	9,200	9,200	12,200	12,200	4,000	3,900
Other Services	2,200	2,100	5,200	5,200	1,100	1,100
Government	16,800	15,700	16,900	16,400	6,700	6,600
Federal Government	2,700	2,700	800	800	300	300
State Government	5,700	4,800	2,600	2,400	1,500	1,400
Local Government	8,400	8,200	13,500	13,200	4,900	4,900

**Clarksville MSA** is Montgomery County, Christian County, KY, & Trigg County, KY. **Cleveland MSA** is Bradley & Polk counties. **Jackson MSA** is Chester, Crockett, & Madison counties. **Johnson City MSA** is Carter, Unicoi, & Washington counties. **Kingsport-Bristol MSA** is Hawkins County, Sullivan County, Scott County, VA, Washington County, VA, & Bristol City, VA. **Morristown MSA** is Hamblen, & Jefferson counties.

# U.S. Consumer Price Index — January 2015

Group	All Urban Consumers			Wage & Clerical Earners		
	Index	Percent Change		Index	Percent Change	
		Yearly	Monthly		Yearly	Monthly
<b>U.S. City Average</b>						
<b>All Items (1982-84=100)</b>	<b>233.707</b>	<b>-0.1</b>	<b>-0.5</b>	<b>228.294</b>	<b>-0.8</b>	<b>-0.7</b>
Food and beverages	246.100	3.1	0.2	245.661	3.2	0.2
Housing	235.485	2.3	0.4	232.167	2.3	0.3
Apparel	122.527	-1.4	-1.1	122.199	-1.2	-1.0
Transportation	190.871	-10.6	-4.5	188.548	-11.9	-4.9
Medical care	440.969	2.6	0.3	443.836	2.6	0.3
<b>South</b>						
<b>All Items (1982-84=100)</b>	<b>226.855</b>	<b>-0.4</b>	<b>-0.7</b>	<b>223.133</b>	<b>-1.0</b>	<b>-0.9</b>
Food and beverages	244.810	2.8	0.2	244.258	3.0	0.3
Housing	218.993	2.7	0.2	219.206	2.8	0.2
Apparel	129.018	-4.1	-2.8	128.846	-4.2	-2.6
Transportation	190.415	-11.2	-4.6	186.814	-12.7	-5.2
Medical care	417.671	1.8	0.0	423.761	1.8	0.1

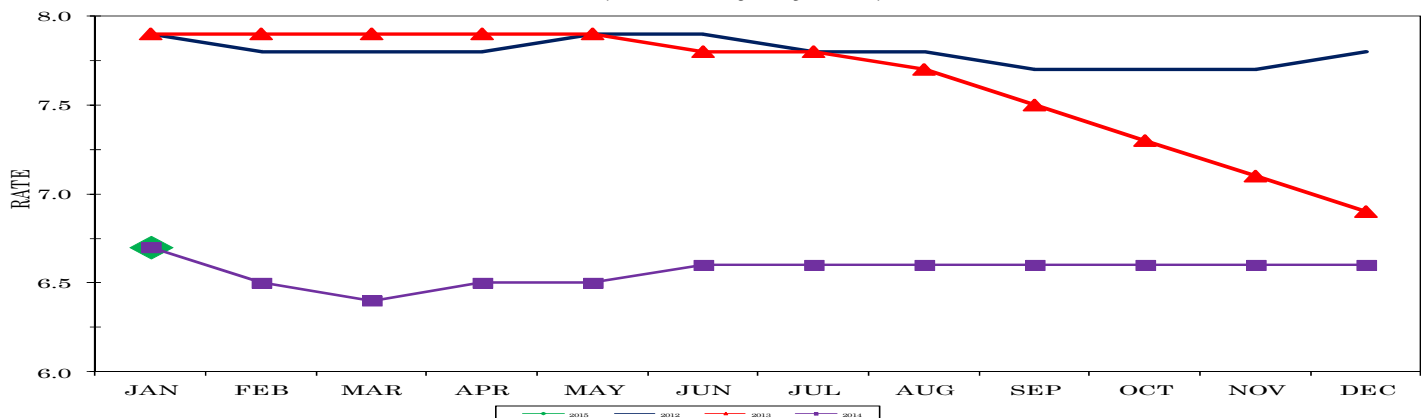
## HOURS AND EARNINGS OF PRODUCTION WORKERS

	AVERAGE WEEKLY EARNINGS			AVG. HOURLY EARNINGS			AVERAGE WEEKLY HOURS		
	Jan.	Dec.	Jan.	Jan.	Dec.	Jan.	Jan.	Dec.	Jan.
	2014	2014	2015	2014	2014	2015	2014	2014	2015
Manufacturing	\$719.43	\$752.99	<b>\$723.56</b>	\$17.59	\$17.39	<b>\$17.31</b>	40.9	43.3	41.8
Durable Goods Manufacturing	\$753.38	\$773.03	<b>\$732.75</b>	\$18.11	\$17.73	<b>\$17.53</b>	41.6	43.6	41.8
Non-Durable Goods Manufacturing	\$662.67	\$718.61	<b>\$708.95</b>	\$16.65	\$16.79	<b>\$16.92</b>	39.8	42.8	41.9

## ALL EMPLOYEE HOURS AND EARNINGS

	AVERAGE WEEKLY EARNINGS			AVG. HOURLY EARNINGS			AVERAGE WEEKLY HOURS		
	Jan.	Dec.	Jan.	Jan.	Dec.	Jan.	Jan.	Dec.	Jan.
	2014	2014	2015	2014	2014	2015	2014	2014	2015
Total Private	\$721.75	\$723.93	<b>\$718.29</b>	\$20.74	\$20.45	<b>\$20.70</b>	34.8	35.4	34.7
Goods Producing	\$851.84	\$885.74	<b>\$864.27</b>	\$21.19	\$21.19	<b>\$21.34</b>	40.2	41.8	40.5
Mining, Logging and Construction	\$859.81	\$868.80	<b>\$824.94</b>	\$21.99	\$21.72	<b>\$21.94</b>	39.1	40.0	37.6
Manufacturing	\$850.16	\$891.25	<b>\$876.02</b>	\$20.94	\$21.02	<b>\$21.16</b>	40.6	42.4	41.4
Private Service Providing	\$693.17	\$686.14	<b>\$685.70</b>	\$20.63	\$20.24	<b>\$20.53</b>	33.6	33.9	33.4
Trade, Transportation, and Utilities	\$644.44	\$659.40	<b>\$663.36</b>	\$19.01	\$18.84	<b>\$19.34</b>	33.9	35.0	34.3
Information	\$950.18	\$966.89	<b>\$987.83</b>	\$25.82	\$26.49	<b>\$26.99</b>	36.8	36.5	36.6
Financial Activities	\$928.93	\$925.34	<b>\$927.52</b>	\$24.51	\$24.48	<b>\$24.80</b>	37.9	37.8	37.4
Professional and Business Services	\$923.04	\$838.02	<b>\$826.70</b>	\$25.64	\$23.54	<b>\$23.62</b>	36.0	35.6	35.0
Education and Health Services	\$724.50	\$745.70	<b>\$749.69</b>	\$21.00	\$21.49	<b>\$21.73</b>	34.5	34.7	34.5
Leisure and Hospitality	\$306.92	\$311.64	<b>\$305.50</b>	\$11.67	\$11.76	<b>\$11.75</b>	26.3	26.5	26.0
Other Services	\$648.00	\$665.90	<b>\$650.12</b>	\$20.00	\$20.24	<b>\$20.19</b>	32.4	32.9	32.2

## TENNESSEE UNEMPLOYMENT RATES (Seasonally Adjusted)





The Tennessee Department of Labor and Workforce Development is committed to principles of equal opportunity, equal access, and affirmative action. Auxiliary aids and services are available upon request to individuals with disabilities.  
Tennessee Department of Labor and Workforce Development; Authorization 337607; This public document was promulgated for electronic use only.