

# The Labor Market Report

The Tennessee Department of Labor and Workforce Development

Phil Bredesen,  
Governor

James G. Neeley,  
Commissioner

March 2009 Data

## County Population Estimates 2000-2008

### Special Points of Interest:

- Population estimates for Tennessee counties, Census 2000 and 2006-2008
- Tennessee Historical Civilian Labor Force Series, 1978 to Present
- County Unemployment Rates
- Civilian Labor Force Summary
- State Unemployment Insurance Activities

### Inside This Issue:

Chattanooga MSA	7
Knoxville MSA	8
Memphis MSA	9
Nashville MSA	10
Smaller MSAs	11
Consumer Price Index	12

The 2008 population of Tennessee was up 1.1 percent (65,772), to 6,214,888, from the previous July's estimate, according to the Bureau of the Census. (See table on Page 2.)

The Population Division of the Census Bureau produces estimates of state and county populations each July 1. The methodology has remained unchanged for over two decades.

The most recent decennial census data from April 1, 2000, were used. The updated population estimates include births, deaths, internal migration, and international migration that have occurred from the census date to the date of the population estimate. For the net migration component, the bureau relies on the annual extract of tax returns to develop net migration rates for the population under age 65 for each county.

The largest county population increases in the past year were in Rutherford County (up 8,393), Knox County (up 6,416), Davidson County (up 5,877), Williamson County (up 5,762), Wilson County (up 3,626), Sum-

ner County (up 3,063), and Hamilton County (up 2,771). These seven counties had a total population increase of 35,308, or 53.7 percent, of the entire state increase.

During the past year, Rutherford County had the largest percentage increase (up 3.5 percent), followed by Williamson County (up 3.5 percent), Wilson County (up 3.4 percent), Fayette County (up 2.8 percent), and Cannon County (up 2.8 percent). Shelby County had the largest population decrease, declining by 2,237 persons from last year (down 0.2 percent). The largest percentage decline was the 1.1 percent drop in Lake County.

Since the 2000 Census, the largest growth counties were Rutherford County (up 67,247 persons), Davidson County (up 56,253 persons), Knox County (up 47,987 persons), Williamson County (up 44,814 persons), and Sumner County (up 25,025 persons). The largest percentage increases were in Rutherford County (up 36.9 percent), Williamson County (up 35.4 percent), Fayette County (up 32.5 percent), Wilson County (up 23.6 percent), Sequatchie County (up 19.4 percent),

and Robertson County (up 19.2 percent). Weakley County declined by 1,520 and Obion County declined by 1,075, while Lake County dropped by 7.9 percent.

Obion County had a population decline for the eighth straight year, while Lake County has declined for seven consecutive years. Weakley County increased for the first time since 2000 (up 201 persons). Last year, 13 of the 95 counties saw population declines. Eight of those declining counties are west of the Tennessee River, while there were five combined in the other two-thirds of the state. The 10 highest growth counties were urban or suburban areas.

There are five counties with a population greater than 200,000. They are Shelby (906,825), Davidson (626,144), Knox (430,019), Hamilton (332,848), and Rutherford (249,270). There are seven counties with populations greater than 100,000 but less than 200,000. The smallest counties are Pickett (4,801), Van Buren (5,481), and Moore (6,195).

# County Population Estimates in Tennessee, Census 2000 and 2006-2008

AREA	Population Growth				Population Estimate			Census	AREA	Population Growth				Population Estimate			Census
	2007-2008		2000-2008		2008	2007	2006	April 1, 2000		2007-2008		2000-2008		2008	2007	2006	April 1, 2000
	%	Rank	%	Rank						%	Rank	%	Rank				
<b>TENNESSEE</b>	<b>1.1</b>	<b>x</b>	<b>9.2</b>	<b>x</b>	<b>6,214,888</b>	<b>6,149,116</b>	<b>6,068,306</b>	<b>5,689,283</b>	Lake	-1.1	95	-7.9	95	7,323	7,407	7,433	7,954
Anderson	1.3	33	4.0	59	74,169	73,246	72,735	71,330	Lauderdale	0.0	80	-1.5	84	26,692	26,681	26,573	27,101
Bedford	1.9	13	18.9	9	44,696	43,855	42,903	37,586	Lawrence	0.2	74	2.6	64	40,954	40,881	40,593	39,926
Benton	-0.3	88	-2.1	85	16,193	16,243	16,177	16,537	Lewis	0.0	81	1.7	68	11,564	11,560	11,454	11,367
Bledsoe	0.6	60	6.3	46	13,142	13,065	12,864	12,367	Lincoln	1.4	30	5.7	47	33,116	32,665	32,372	31,340
Blount	1.6	22	14.8	15	121,511	119,602	117,748	105,823	Loudon	2.4	8	18.8	10	46,445	45,363	44,281	39,086
Bradley	1.3	34	9.7	26	96,472	95,275	93,596	87,965	McMinn	0.9	48	7.1	37	52,511	52,051	51,574	49,015
Campbell	0.6	56	2.7	63	40,936	40,679	40,544	39,854	McNairy	0.9	45	4.3	55	25,724	25,490	25,318	24,653
Cannon	2.8	5	7.6	34	13,804	13,434	13,290	12,826	Macon	1.3	32	7.1	38	21,838	21,559	21,421	20,386
Carroll	-0.4	92	-2.6	89	28,719	28,843	28,784	29,475	Madison	0.1	78	4.9	52	96,376	96,296	96,016	91,837
Carter	0.6	59	4.8	53	59,492	59,142	58,968	56,742	Marion	0.5	65	1.7	69	28,247	28,118	27,972	27,776
Cheatham	1.0	40	9.7	25	39,396	38,999	38,485	35,912	Marshall	2.0	10	11.1	20	29,731	29,142	28,570	26,767
Chester	1.3	31	4.9	51	16,309	16,094	15,980	15,540	Maury	2.7	7	17.9	11	81,938	79,793	77,379	69,498
Claiborne	0.9	47	5.4	49	31,461	31,184	30,986	29,862	Meigs	1.4	29	6.4	43	11,790	11,628	11,521	11,086
Clay	-0.7	94	-2.3	86	7,794	7,847	7,942	7,976	Monroe	2.0	9	17.2	12	45,648	44,733	43,742	38,961
Cocke	1.1	39	6.3	44	35,688	35,317	35,003	33,565	Montgomery	0.2	72	14.8	14	154,756	154,402	147,961	134,768
Coffee	0.8	52	8.6	28	52,134	51,734	51,320	48,014	Moore	1.5	27	7.9	31	6,195	6,103	5,998	5,740
Crockett	0.0	82	-2.4	88	14,186	14,183	14,175	14,532	Morgan	0.3	69	3.3	61	20,404	20,351	20,082	19,757
Cumberland	1.2	36	14.5	16	53,590	52,932	51,984	46,802	Obion	-0.4	91	-3.3	91	31,375	31,497	31,569	32,450
Davidson	0.9	43	9.9	24	626,144	620,267	614,200	569,891	Overton	0.1	77	4.3	57	20,975	20,954	20,721	20,118
Decatur	-0.3	89	-3.8	92	11,288	11,326	11,273	11,731	Perry	1.0	41	1.6	70	7,753	7,675	7,591	7,631
DeKalb	1.5	28	7.3	36	18,694	18,425	18,283	17,423	Pickett	0.7	54	-2.9	90	4,801	4,767	4,780	4,945
Dickson	1.2	37	11.0	21	47,884	47,337	46,316	43,156	Polk	0.2	71	-2.4	87	15,671	15,635	15,729	16,050
Dyer	-0.1	85	0.9	73	37,600	37,642	37,631	37,279	Putnam	2.0	11	14.2	18	71,160	69,758	68,631	62,315
Fayette	2.8	4	32.5	3	38,173	37,135	35,730	28,806	Rhea	1.6	20	8.4	29	30,781	30,287	30,054	28,400
Fentress	1.7	17	6.3	45	17,667	17,376	17,295	16,625	Roane	0.2	70	2.9	62	53,430	53,306	53,040	51,910
Franklin	0.2	75	4.8	54	41,165	41,099	40,734	39,270	Robertson	2.7	6	19.2	6	64,898	63,162	61,582	54,433
Gibson	1.5	24	2.3	66	49,257	48,511	48,038	48,152	Rutherford	3.5	1	36.9	1	249,270	240,877	230,581	182,023
Giles	0.7	55	-0.9	79	29,184	28,988	29,066	29,447	Scott	0.4	66	4.3	56	22,039	21,957	21,792	21,127
Grainger	0.8	51	9.9	23	22,708	22,528	22,336	20,659	Sequatchie	1.6	19	19.4	5	13,580	13,360	13,033	11,370
Greene	0.5	64	5.2	50	66,157	65,846	65,363	62,909	Sevier	1.6	23	19.2	7	84,835	83,513	81,627	71,170
Grundy	-0.3	87	-0.8	78	14,220	14,258	14,283	14,332	Shelby	-0.2	86	1.0	72	906,825	909,062	909,658	897,472
Hamblen	0.9	44	6.9	41	62,132	61,565	60,538	58,128	Smith	1.7	18	7.9	32	19,107	18,795	18,578	17,712
Hamilton	0.8	50	8.1	30	332,848	330,077	327,620	307,896	Stewart	1.5	25	6.9	40	13,226	13,028	12,871	12,370
Hancock	-0.4	90	-1.4	83	6,693	6,717	6,638	6,786	Sullivan	0.4	68	0.6	75	153,900	153,357	152,373	153,048
Hardeman	0.0	79	-0.9	80	27,848	27,836	27,781	28,105	Sumner	2.0	12	19.2	8	155,474	152,411	148,303	130,449
Hardin	0.6	61	2.5	65	26,227	26,075	25,923	25,578	Tipton	1.9	14	14.5	17	58,706	57,622	56,371	51,271
Hawkins	1.0	42	7.3	35	57,477	56,928	56,459	53,563	Trousdale	1.6	21	7.8	33	7,822	7,699	7,511	7,259
Haywood	-0.5	93	-3.9	93	19,024	19,129	19,256	19,797	Unicoi	0.2	73	0.3	76	17,718	17,683	17,621	17,667
Henderson	0.9	49	5.5	48	26,916	26,687	26,472	25,522	Union	0.9	46	6.7	42	19,008	18,838	18,752	17,808
Henry	0.6	57	2.1	67	31,770	31,575	31,486	31,115	Van Buren	1.3	35	-0.5	77	5,481	5,413	5,350	5,508
Hickman	0.4	67	6.9	39	23,841	23,753	23,513	22,295	Warren	0.5	63	4.1	58	39,842	39,646	39,399	38,276
Houston	0.8	53	0.6	74	8,137	8,075	7,930	8,088	Washington	1.9	15	10.7	22	118,639	116,470	114,636	107,198
Humphreys	0.0	83	1.2	71	18,149	18,152	18,058	17,929	Wayne	0.0	84	-1.4	82	16,614	16,620	16,674	16,842
Jackson	0.5	62	-1.2	81	10,847	10,789	10,818	10,984	Weakley	0.6	58	-4.4	94	33,375	33,174	33,267	34,895
Jefferson	1.8	16	15.3	13	51,074	50,154	49,041	44,294	White	1.1	38	8.8	27	25,129	24,847	24,482	23,102
Johnson	0.1	76	3.5	60	18,112	18,086	17,982	17,499	Williamson	3.5	2	35.4	2	171,452	165,690	158,866	126,638
Knox	1.5	26	12.6	19	430,019	423,603	416,014	382,032	Wilson	3.4	3	23.6	4	109,803	106,177	103,043	88,809

Source: Population Division, U.S. Census Bureau.

# Statewide

## HISTORICAL CIVILIAN LABOR FORCE

## UNEMPLOYMENT RATES BY COUNTY\*

(NUMBERS IN THOUSANDS)

MONTHLY DATA NOT SEASONALLY ADJUSTED

Year and Month	Civilian Labor Force							Unemployed Number	Rate (%)
	Total	Employment	Employed						
			Total	Nonfarm Employment					
			**Manu- facturing	**Trade	**Services				
1979	2,040.5	1,918.5	1,777.3	524.7	388.7	285.4	122.0	6.0 %	
1980	2,071.6	1,920.1	1,746.6	502.1	379.7	291.0	151.5	7.3	
1981	2,123.1	1,927.6	1,775.4	506.9	379.9	304.4	195.5	9.2	
1982	2,141.2	1,891.5	1,703.0	466.7	380.5	313.1	249.7	11.7	
1983	2,188.2	1,932.4	1,719.0	468.6	389.9	323.4	255.8	11.7	
1984	2,233.5	2,026.4	1,812.0	497.1	413.3	344.3	207.1	9.3	
1985	2,255.7	2,070.0	1,867.8	492.4	435.3	360.2	185.7	8.2	
1986	2,291.3	2,110.7	1,929.8	490.5	452.1	384.7	180.6	7.9	
1987	2,324.1	2,166.5	2,011.6	497.4	477.2	408.9	157.6	6.8	
1988	2,333.6	2,197.2	2,092.1	511.9	495.6	440.3	136.4	5.8	
1989	2,364.9	2,241.3	2,167.2	524.5	508.4	467.2	123.6	5.2	
1990	2,401.1	2,269.0	2,193.2	493.4	379.1	611.0	132.1	5.5	
1991	2,425.4	2,266.0	2,183.6	480.3	373.0	626.7	159.4	6.6	
1992	2,479.5	2,316.7	2,245.0	492.8	374.1	664.8	162.8	6.6	
1993	2,543.3	2,391.6	2,328.5	502.8	382.5	709.8	151.7	6.0	
1994	2,645.7	2,511.1	2,423.0	513.8	398.4	751.4	134.6	5.1	
1995	2,718.0	2,574.0	2,498.9	518.0	412.6	795.0	144.0	5.3	
1996	2,758.4	2,611.0	2,533.3	501.5	420.9	814.3	147.4	5.3	
1997	2,788.3	2,640.0	2,584.0	498.0	430.5	849.7	148.3	5.3	
1998	2,811.7	2,685.2	2,638.4	498.6	437.1	875.7	126.5	4.5	
1999	2,838.7	2,722.1	2,685.3	494.7	443.6	900.8	116.6	4.1	
2000	2,871.5	2,756.5	2,728.9	488.1	447.5	930.9	115.0	4.0	
2001	2,863.5	2,728.5	2,688.3	454.2	446.6	921.5	135.0	4.7	
2002	2,867.1	2,715.0	2,664.4	428.5	438.7	938.0	152.1	5.3	
2003	2,896.1	2,731.4	2,667.5	414.1	440.8	950.3	164.8	5.7	
2004	2,906.9	2,748.6	2,706.1	411.8	447.5	978.7	158.3	5.4	
2005	2,938.9	2,775.6	2,743.1	408.8	454.6	1,005.6	163.3	5.6	
2006	3,008.3	2,854.0	2,783.1	400.1	460.6	1,030.4	154.4	5.1	
2007	3,013.4	2,867.6	2,797.4	380.0	463.5	1,052.8	145.8	4.8	
2008	3,041.3	2,846.1	2,776.2	361.8	458.4	1,058.4	195.2	6.4	
<b>2009</b>									
January	3,005.3	2,728.6	2,669.0	333.6	440.8	1,029.0	276.7	9.2 %	
February (r)	3,023.6	2,736.5	2,662.6	331.9	436.1	1,028.4	287.2	9.5	
March (p)	3,018.1	2,718.0	2,667.6	325.7	440.1	1,035.8	300.1	9.9	
April									
May									
June									
July									
August									
September									
October									
November									
December									

(r)=revised

\*\*These industries not comparable to industry employment data before

(p)=preliminary

1990 because of changes to NAICS coding system.

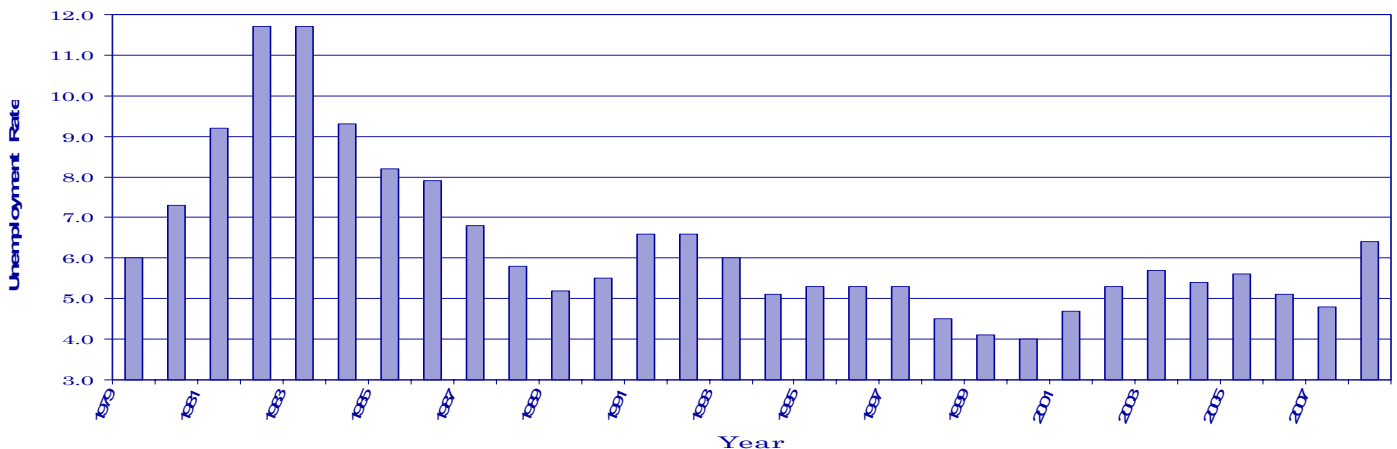
Trade = Wholesale and Retail Trade

Services = Professional/Business Services, Educational/Health Services, Leisure/Hospitality, and Other Services.

County	Mar 2008	Mar 2009	County	Mar 2008	Mar 2009
Anderson	5.4	9.4	Lauderdale	10.0	18.2
Bedford	6.0	11.2	Lawrence	9.1	14.9
Benton	7.7	13.1	Lewis	9.7	16.7
Bledsoe	7.6	12.9	Lincoln	4.7	6.9
Blount	5.7	10.0	Loudon	5.1	9.3
Bradley	5.7	9.4	Macon	7.1	12.2
Campbell	7.5	12.5	Madison	6.3	9.7
Cannon	5.5	11.3	Marion	7.2	10.8
Carroll	8.5	14.1	Marshall	9.2	16.9
Carter	5.7	10.1	Maury	7.9	15.6
Cheatham	4.7	8.8	McMinn	8.1	13.8
Chester	6.0	10.3	McNairy	8.6	14.6
Claiborne	6.5	12.2	Meigs	8.2	14.3
Clay	11.2	15.5	Monroe	8.1	17.5
Cocke	9.3	15.1	Montgomery	5.5	8.2
Coffee	5.9	10.2	Moore	5.2	7.9
Crockett	8.7	12.7	Morgan	6.9	11.2
Cumberland	7.6	11.6	Obion	6.6	9.8
Davidson	4.8	7.9	Overton	8.2	14.2
Decatur	8.0	11.6	Perry	13.0	25.4
DeKalb	5.8	11.0	Pickett	10.6	16.9
Dickson	6.3	12.0	Polk	7.3	13.5
Dyer	6.6	12.6	Putnam	5.7	9.3
Fayette	7.3	10.5	Rhea	6.8	13.1
Fentress	8.5	13.7	Roane	5.3	8.4
Franklin	6.2	10.1	Robertson	5.2	10.6
Gibson	9.0	13.3	Rutherford	5.0	9.3
Giles	7.2	15.0	Scott	10.9	18.8
Grainger	7.0	14.0	Sequatchie	8.0	11.3
Greene	8.5	15.2	Sevier	8.4	13.4
Grundy	7.9	13.8	Shelby	6.3	8.9
Hamblen	6.1	12.1	Smith	7.2	14.5
Hamilton	4.8	8.0	Stewart	8.1	11.6
Hancock	7.2	13.6	Sullivan	4.8	8.0
Hardeman	8.8	11.4	Sumner	5.2	9.5
Hardin	7.2	12.4	Tipton	7.4	12.3
Hawkins	5.8	11.1	Trousdale	9.4	12.7
Haywood	8.5	13.8	Unicoi	7.9	11.4
Henderson	9.4	15.6	Union	5.6	10.5
Henry	7.6	13.0	Van Buren	8.0	14.2
Hickman	8.4	12.5	Warren	7.6	13.9
Houston	6.9	11.2	Washington	5.2	8.1
Humphreys	8.0	13.2	Wayne	9.4	12.7
Jackson	8.2	15.8	Weakley	6.6	11.0
Jefferson	6.9	12.9	White	7.2	14.7
Johnson	7.9	12.2	Williamson	4.0	7.2
Knox	4.4	7.3	Wilson	5.3	8.8
Lake	6.6	9.8			

\*Data Not Seasonally Adjusted

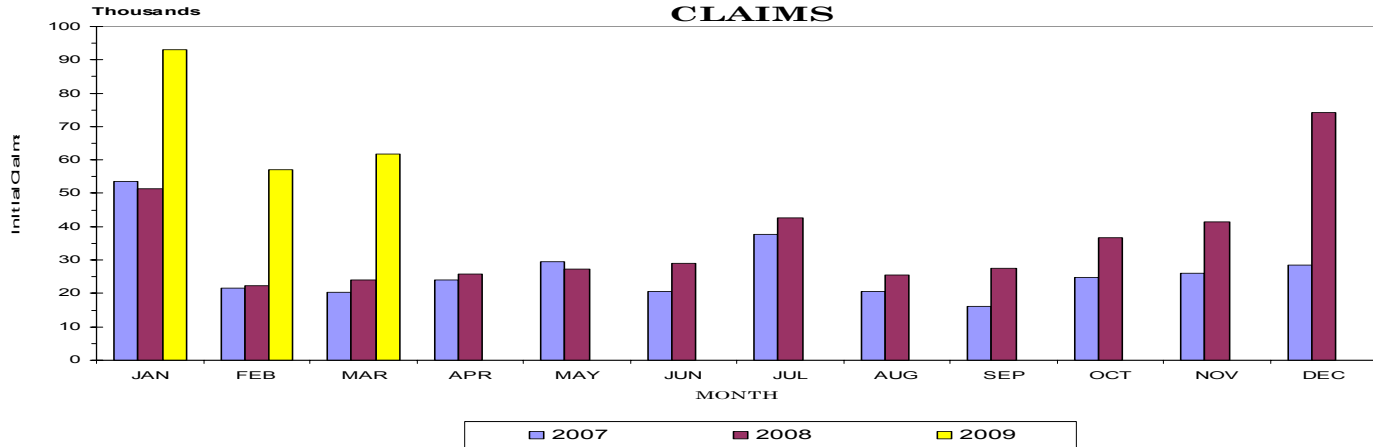
## Unemployment Rates 1979-2008



# Statewide

## UNEMPLOYMENT INSURANCE ACTIVITIES

### MONTHLY INITIAL CLAIMS



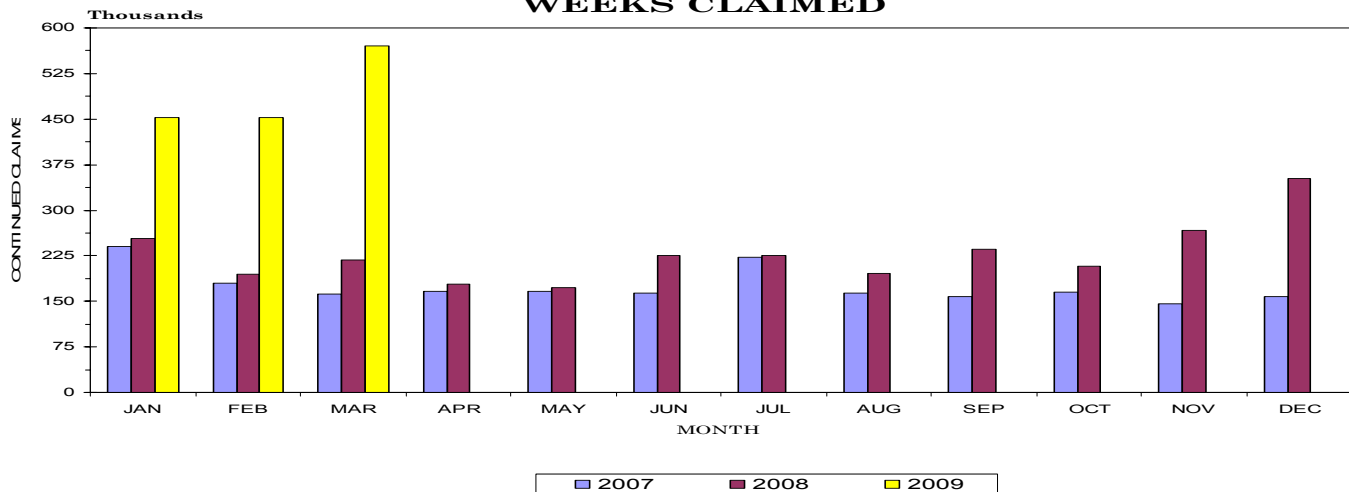
## BENEFIT PROGRAMS

STATE BENEFIT PROGRAM				FEDERAL BENEFIT PROGRAMS			
CLAIMS	Mar. 2008	Feb. 2009	Mar. 2009	FORMER FEDERAL EMPLOYEES			
				Mar. 2008	Feb. 2009	Mar. 2009	
Initial Claims	24,068	57,157	61,673	Benefits Paid	\$324,997	\$379,020	\$439,342
Continued Weeks Claimed	217,989	452,731	570,571	Benefit Weeks Claimed	992	1,283	1,524
Nonmonetary Determinations	6,338	7,346	9,715	Initial Claims	79	92	193
Appeals Decisions	1,922	1,959	2,376	Continued Weeks Claimed	1,150	1,311	1,723
Lower Authority	1,532	1,681	1,939	Appeals Decisions	16	5	7
Higher Authority	390	278	437	<b>FORMER MILITARY PERSONNEL</b>			
<b>BENEFITS</b>				Benefits Paid	\$389,133	\$489,006	\$582,471
Amount Paid	\$44,601,706	\$99,050,240	\$122,256,116	Benefit Weeks Claimed	1,199	1,485	1,776
Benefit Weeks Paid	195,835	445,385	548,103	Initial Claims	88	143	144
Average Weekly Benefit Amount	\$220	\$225	\$222	Continued Weeks Claimed	1,381	1,482	1,912
First Payments	10,795	30,370	28,872	Appeals Decisions	2	8	1
Final Payments	4,371	8,136	11,174				
Average Weeks Duration	14	13	13				
Trust Fund Balance*	\$472,646,284	\$269,724,621	\$153,666,432				

\*Trust Fund includes balance of \$92.84 million of Reed Act funds.

## CONTINUED WEEKS CLAIMED

### MONTHLY CONTINUED WEEKS CLAIMED



# Statewide

## ESTIMATED NONFARM EMPLOYMENT (in thousands)

Industry	March 2008	Revised February 2009	Preliminary March 2009	Net Change	
				Mar. 2008 Mar. 2009	Feb. 2009 Mar. 2009
Total Nonfarm	2,790.1	2,662.6	<b>2,667.6</b>	-122.5	5.0
Total Private	2,357.7	2,230.6	<b>2,234.8</b>	-122.9	4.2
Goods Producing	503.6	443.5	<b>437.1</b>	-66.5	-6.4
Mining & Construction	134.0	111.6	<b>111.4</b>	-22.6	-0.2
Manufacturing	369.6	331.9	<b>325.7</b>	-43.9	-6.2
Durable Goods Manufacturing	228.9	201.8	<b>197.3</b>	-31.6	-4.5
Wood Product Manufacturing	15.0	12.3	<b>12.2</b>	-2.8	-0.1
Nonmetallic Mineral Product Manufacturing	14.8	13.5	<b>13.3</b>	-1.5	-0.2
Primary Metal Manufacturing	11.5	10.2	<b>10.1</b>	-1.4	-0.1
Fabricated Metal Product Manufacturing	40.4	36.8	<b>35.9</b>	-4.5	-0.9
Machinery Manufacturing	32.3	30.1	<b>29.7</b>	-2.6	-0.4
Computer & Electronic Product Manufacturing	7.8	6.7	<b>6.5</b>	-1.3	-0.2
Electrical Equipment & Appliance Manufacturing	21.0	19.4	<b>19.1</b>	-1.9	-0.3
Transportation Equipment Manufacturing	56.0	46.2	<b>44.1</b>	-11.9	-2.1
Furniture & Related Product Manufacturing	15.1	12.7	<b>12.6</b>	-2.5	-0.1
Miscellaneous Manufacturing	15.0	13.9	<b>13.8</b>	-1.2	-0.1
Nondurable Goods Manufacturing	140.7	130.1	<b>128.4</b>	-12.3	-1.7
Textile Mills, Products, & Apparel	14.7	13.5	<b>13.2</b>	-1.5	-0.3
Food Manufacturing	32.1	30.4	<b>30.1</b>	-2.0	-0.3
Beverage & Tobacco Product Manufacturing	5.0	4.7	<b>4.6</b>	-0.4	-0.1
Paper Manufacturing	17.3	16.2	<b>16.2</b>	-1.1	0.0
Printing & Related Support Activities	15.9	14.3	<b>14.2</b>	-1.7	-0.1
Chemical Manufacturing	27.5	26.2	<b>25.9</b>	-1.6	-0.3
Plastics & Rubber Products Manufacturing	26.2	23.5	<b>22.9</b>	-3.3	-0.6
Plastics Product Manufacturing	13.6	12.0	<b>11.9</b>	-1.7	-0.1
Rubber Product Manufacturing	12.6	11.5	<b>11.0</b>	-1.6	-0.5
Service Providing	2,286.5	2,219.1	<b>2,230.5</b>	-56.0	11.4
Trade, Transportation, & Utilities	606.1	572.5	<b>576.0</b>	-30.1	3.5
Wholesale Trade	133.1	126.7	<b>127.2</b>	-5.9	0.5
Merchant Wholesalers, Durable Goods	68.9	65.0	<b>65.3</b>	-3.6	0.3
Merchant Wholesalers, Nondurable Goods	46.5	44.3	<b>44.4</b>	-2.1	0.1
Wholesale Electronic Markets	17.7	17.4	<b>17.5</b>	-0.2	0.1
Retail Trade	329.6	309.4	<b>312.9</b>	-16.7	3.5
Motor Vehicle & Parts Dealers	43.2	40.0	<b>39.9</b>	-3.3	-0.1
Furniture & Home Furnishings Stores	9.8	9.2	<b>9.3</b>	-0.5	0.1
Building Material, Garden Equipment, & Supplies	27.5	25.3	<b>26.0</b>	-1.5	0.7
Food & Beverage Stores	48.7	47.0	<b>47.3</b>	-1.4	0.3
Health & Personal Care Stores	24.2	24.0	<b>24.1</b>	-0.1	0.1
Gasoline Stations	23.9	22.4	<b>22.6</b>	-1.3	0.2
Clothing & Clothing Accessories Stores	29.2	27.1	<b>27.3</b>	-1.9	0.2
Sporting Goods, Hobby, Book, & Music Stores	11.8	11.3	<b>11.3</b>	-0.5	0.0
General Merchandise Stores	74.2	68.8	<b>70.1</b>	-4.1	1.3
Miscellaneous Store Retailers	16.7	15.4	<b>15.3</b>	-1.4	-0.1
Nonstore Retailers	10.3	9.4	<b>9.3</b>	-1.0	-0.1
Transportation, Warehousing, & Utilities	143.4	136.4	<b>135.9</b>	-7.5	-0.5
Utilities	3.5	3.4	<b>3.4</b>	-0.1	0.0
Transportation & Warehousing	139.9	133.0	<b>132.5</b>	-7.4	-0.5
Truck Transportation	60.7	55.5	<b>55.0</b>	-5.7	-0.5
Information	51.2	47.5	<b>47.5</b>	-3.7	0.0
Publishing Industries (except internet)	13.0	12.8	<b>12.8</b>	-0.2	0.0
Telecommunications	17.7	18.7	<b>18.5</b>	0.8	-0.2
Financial Activities	145.2	138.7	<b>138.4</b>	-6.8	-0.3
Finance & Insurance	109.2	104.7	<b>104.5</b>	-4.7	-0.2
Real Estate, Rental, & Leasing	36.0	34.0	<b>33.9</b>	-2.1	-0.1
Professional & Business Services	321.2	304.2	<b>305.3</b>	-15.9	1.1
Professional, Scientific, & Technical Services	111.9	109.9	<b>109.8</b>	-2.1	-0.1
Management of Companies & Enterprises	24.9	24.3	<b>24.5</b>	-0.4	0.2
Administrative, Support, & Waste Management	184.4	170.0	<b>171.0</b>	-13.4	1.0
Educational & Health Services	354.4	363.5	<b>365.6</b>	11.2	2.1
Educational Services	40.7	40.5	<b>41.0</b>	0.3	0.5
Health Care & Social Assistance	313.7	323.0	<b>324.6</b>	10.9	1.6
Ambulatory Health Care Services	117.2	121.4	<b>121.5</b>	4.3	0.1
Hospitals	102.2	107.9	<b>108.4</b>	6.2	0.5
Nursing & Residential Care Facilities	53.0	53.8	<b>54.4</b>	1.4	0.6
Social Assistance	41.3	39.9	<b>40.3</b>	-1.0	0.4
Leisure & Hospitality	270.7	260.2	<b>264.3</b>	-6.4	4.1
Arts, Entertainment, & Recreation	27.5	25.3	<b>27.0</b>	-0.5	1.7
Accommodation & Food Services	243.2	234.9	<b>237.3</b>	-5.9	2.4
Accommodation	33.8	29.0	<b>28.7</b>	-5.1	-0.3
Food Services & Drinking Places	209.4	205.9	<b>208.6</b>	-0.8	2.7
Other Services	105.3	100.5	<b>100.6</b>	-4.7	0.1
Repair & Maintenance	22.0	21.1	<b>21.0</b>	-1.0	-0.1
Personal & Laundry Services	25.1	24.1	<b>24.1</b>	-1.0	0.0
Government	432.4	432.0	<b>432.8</b>	0.4	0.8
Federal Government	48.9	48.9	<b>48.7</b>	-0.2	-0.2
State Government	99.6	97.4	<b>98.5</b>	-1.1	1.1
State Government Educational Services	49.3	47.2	<b>48.3</b>	-1.0	1.1
Local Government	283.9	285.7	<b>285.6</b>	1.7	-0.1
Local Government Educational Services	148.5	147.0	<b>147.1</b>	-1.4	0.1

## NONFARM EMPLOYMENT AND LABOR FORCE IN TENNESSEE

Total nonfarm employment decreased by 122,500 jobs from March 2008 to March 2009. During this period, there were large seasonal decreases in mining/construction (down 22,600 jobs); retail trade (down 16,700 jobs), which includes declines of 4,100 in general merchandise stores, 3,300 jobs in motor vehicle/parts dealers, and 1,900 jobs in clothing/clothing accessories stores; professional/business services (down 15,900 jobs), which includes a decline of 13,400 jobs in administrative/support/waste management; transportation equipment manufacturing (down 11,900 jobs); transportation/warehousing (down 7,400 jobs), which includes a drop of 5,700 jobs in truck transportation; financial activities (down 6,800 jobs), which includes a decrease of 4,700 jobs in finance/insurance and 2,100 jobs in real estate/rental/leasing; wholesale trade (down 5,900 jobs), which includes a decline of 3,600 jobs in durable goods wholesalers and 2,100 jobs in nondurable goods wholesalers; accommodation/food services (down 5,900 jobs), which includes a drop of 5,100 jobs in accommodation; other services (down 4,700 jobs); fabricated metal product manufacturing (down 4,500 jobs); information (down 3,700 jobs); and plastics/rubber products manufacturing (down 3,300 jobs), which includes a drop of 1,700 jobs in plastics product manufacturing. This was partially offset by increases in health care/social assistance (up 10,900 jobs), which includes an increase of 6,200 jobs in hospitals and 4,300 jobs in ambulatory health care services; and local government (up 1,700 jobs).

During March, nonfarm employment increased by 5,000 jobs. The largest seasonal increases were in leisure/hospitality (up 4,100 jobs), which includes an increase of 2,400 jobs in accommodation/food services and 1,700 jobs in arts/entertainment/recreation; retail trade (up 3,500 jobs), which includes an increase of 1,300 jobs in general merchandise stores; educational/health services (up 2,100 jobs), which includes an increase of 1,600 jobs in health care/social assistance; state government educational services (up 1,100 jobs); and administrative/support/waste management (up 1,000 jobs). This was partially offset by a decrease in transportation equipment manufacturing (down 2,100 jobs).

Tennessee's seasonally adjusted estimated unemployment rate for March 2009 was 9.6 percent, up 0.6 percent from the February rate. This is the 20th consecutive month that the current rate is greater than or equal to the national average.

The United States' unemployment rate was 8.5 percent in March 2009. In March 2008, the national unemployment rate was 5.1 percent, and the state's unemployment rate was 5.7 percent.

Across Tennessee, the unemployment rate increased in 74 counties, decreased in 19 counties, and remained the same in two counties. There were only 22 counties with an unemployment rate less than 10 percent, and 14 counties had unemployment rates greater than 15 percent. The lowest rate occurred in Lincoln County at 6.9 percent, down 0.1 percent from the previous month. The highest rate was Perry County's 25.4 percent, up from 24.1 percent in February 2009.

The data from all the nonfarm employment estimates tables include all full- and part-time nonfarm wage and salary employees who worked during or received pay for any part of the pay period that includes the 12th of the month. This is a count of jobs by place of work. Agricultural workers, proprietors, self-employed persons, workers in private households, and unpaid family workers are excluded. These numbers may not add due to rounding. Data is based on the 2008 benchmark.

# CIVILIAN LABOR FORCE

## CIVILIAN LABOR FORCE SUMMARY

	March 2008				February 2009				March 2009			
	Labor Force	Employment	Unemployed	Rate	Labor Force	Employment	Unemployed	Rate	Labor Force	Employment	Unemployed	Rate
<b>Seasonally Adjusted</b>												
U.S.	153,843,000	146,023,000	7,820,000	5.1	154,214,000	141,748,000	12,467,000	8.1	154,048,000	140,887,000	13,161,000	8.5
TENNESSEE	3,034,900	2,861,200	173,700	5.7	3,051,500	2,776,400	275,200	9.0	3,040,100	2,747,800	292,300	9.6
<b>Not Seasonally Adjusted</b>												
U.S.	153,135,000	145,108,000	8,027,000	5.2	153,804,000	140,105,000	13,699,000	8.9	153,728,000	139,833,000	13,895,000	9.0
TENNESSEE	3,020,300	2,839,600	180,700	6.0	3,023,600	2,736,500	287,200	9.5	3,018,100	2,718,000	300,100	9.9
<b>Metropolitan Statistical Areas</b>												
Chattanooga	264,030	249,410	14,620	5.5	264,330	241,430	22,900	8.7	263,860	239,830	24,030	9.1
Clarksville	109,500	102,360	7,140	6.5	108,170	97,370	10,800	10.0	107,550	97,020	10,530	9.8
Cleveland	53,980	50,770	3,210	5.9	53,320	48,520	4,800	9.0	53,580	48,240	5,340	10.0
Jackson	56,320	52,770	3,550	6.3	56,040	50,940	5,100	9.1	56,170	50,690	5,480	9.8
Johnson City	99,680	94,120	5,550	5.6	99,440	90,970	8,470	8.5	99,170	90,240	8,930	9.0
Kingsport-Bristol	146,100	138,940	7,160	4.9	146,220	133,720	12,500	8.5	146,120	133,130	12,980	8.9
Knoxville	354,040	337,130	16,910	4.8	354,830	326,890	27,950	7.9	353,070	324,020	29,050	8.2
Memphis	610,710	572,440	38,270	6.3	613,920	559,390	54,530	8.9	612,010	556,050	55,960	9.1
Morristown	64,780	60,540	4,240	6.5	65,540	57,840	7,710	11.8	65,900	57,530	8,370	12.7
Nashville	789,230	749,590	39,640	5.0	788,740	722,930	65,810	8.3	787,130	718,060	69,070	8.8
<b>Micropolitan Statistical Areas</b>												
Brownsville	9,810	8,980	830	8.5	9,010	7,810	1,200	13.3	9,050	7,810	1,250	13.8
Cookeville	50,940	47,640	3,300	6.5	49,570	44,240	5,320	10.7	49,260	43,860	5,400	11.0
Crossville	22,830	21,100	1,730	7.6	21,830	19,260	2,570	11.8	21,750	19,230	2,520	11.6
Dyersburg	17,610	16,460	1,160	6.6	17,670	15,600	2,070	11.7	17,690	15,460	2,230	12.6
Greeneville	30,610	28,020	2,590	8.5	31,120	26,700	4,410	14.2	31,360	26,600	4,770	15.2
Humboldt	21,020	19,130	1,890	9.0	21,290	18,590	2,700	12.7	21,310	18,480	2,830	13.3
Lawrenceburg	16,440	14,940	1,500	9.1	16,990	14,520	2,470	14.6	16,980	14,450	2,530	14.9
Lewisburg	12,730	11,560	1,170	9.2	12,660	10,800	1,860	14.7	12,930	10,740	2,190	16.9
Martin	15,400	14,390	1,010	6.6	15,590	13,970	1,620	10.4	15,560	13,850	1,710	11.0
McMinnville	17,520	16,190	1,330	7.6	18,350	15,460	2,890	15.8	17,870	15,390	2,480	13.9
Paris	13,920	12,870	1,050	7.6	13,640	11,900	1,740	12.7	13,600	11,830	1,770	13.0
Shelbyville	22,490	21,150	1,340	6.0	22,720	20,280	2,430	10.7	22,710	20,160	2,550	11.2
Tullahoma	48,590	45,690	2,910	6.0	49,570	44,540	5,030	10.2	49,250	44,320	4,930	10.0
Union City	18,120	16,890	1,230	6.8	17,980	16,250	1,730	9.6	17,910	16,120	1,790	10.0

## HOURS AND EARNINGS OF PRODUCTION WORKERS

	AVERAGE WEEKLY EARNINGS			AVERAGE HOURLY EARNINGS			AVERAGE WEEKLY HOURS		
	Mar. 2008	Feb. 2009	Mar. 2009	Mar. 2008	Feb. 2009	Mar. 2009	Mar. 2008	Feb. 2009	Mar. 2009
Manufacturing	\$577.02	\$584.00	\$578.00	\$14.91	\$14.60	\$14.67	38.7	40.0	39.4
Durable Goods Manufacturing	\$572.36	\$598.29	\$582.33	\$14.49	\$14.70	\$14.78	39.5	40.7	39.4
Nondurable Goods Manufacturing	\$583.44	\$563.16	\$572.75	\$15.60	\$14.44	\$14.50	37.4	39.0	39.5

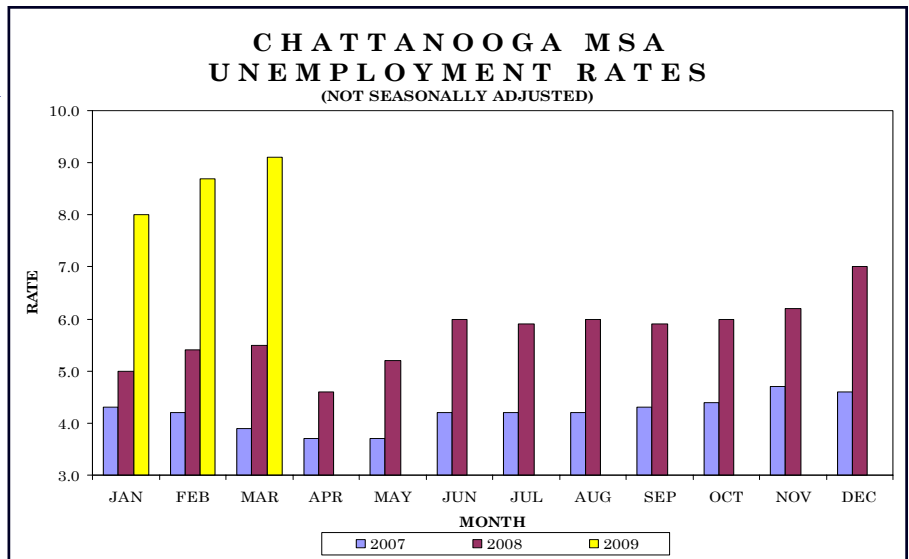
### \*\*ALL EMPLOYEE HOURS AND EARNINGS

	AVERAGE WEEKLY EARNINGS			AVERAGE HOURLY EARNINGS			AVERAGE WEEKLY HOURS		
	Feb. 2008	Jan. 2009	Feb. 2009	Feb. 2008	Jan. 2009	Feb. 2009	Feb. 2008	Jan. 2009	Feb. 2009
Total Private	\$676.16	\$671.24	\$691.33	\$19.43	\$19.40	\$19.64	34.8	34.6	35.2
Goods Producing	\$786.94	\$759.52	\$791.69	\$20.44	\$20.04	\$20.51	38.5	37.9	38.6
Mining & Construction	\$731.25	\$715.47	\$719.99	\$19.50	\$19.71	\$19.78	37.5	36.3	36.4
Manufacturing	\$805.88	\$775.78	\$815.08	\$20.77	\$20.15	\$20.74	38.8	38.5	39.3
Private Srvc Provide	\$646.26	\$649.30	\$667.36	\$19.12	\$19.21	\$19.40	33.8	33.8	34.4
Trade, Transportation, Util	\$629.75	\$663.45	\$681.87	\$18.36	\$19.01	\$19.10	34.3	34.9	35.7
Information	\$736.31	\$806.31	\$857.46	\$20.51	\$22.46	\$23.05	35.9	35.9	37.2
Financial Activities	\$773.02	\$792.09	\$820.88	\$20.78	\$21.35	\$21.89	37.2	37.1	37.5
Professional & Business	\$844.00	\$810.52	\$845.75	\$23.06	\$22.39	\$22.92	36.6	36.2	36.9
Educational & Health	\$705.55	\$699.03	\$702.46	\$20.63	\$20.38	\$20.48	34.2	34.3	34.3
Leisure and Hospitality	\$296.01	\$289.64	\$303.64	\$11.17	\$11.27	\$11.33	26.5	25.7	26.8
Other Services	\$618.30	\$556.44	\$552.42	\$17.87	\$16.61	\$16.49	34.6	33.5	33.5

\*\*This data is one month behind

Total nonfarm employment increased by 300 jobs from February 2009 to March 2009. There were seasonal increases in accommodation/food services (up 700 jobs) and general merchandise stores (up 200 jobs). This was partially offset by declines in professional/business services (down 300 jobs) and durable goods manufacturing (down 200 jobs).

During the past 12 months, nonfarm jobs decreased by 6,300 jobs. During that time, goods-producing jobs decreased by 4,300, while service-providing jobs declined by 2,000.



## CIVILIAN LABOR FORCE SUMMARY

	March 2008				February 2009				March 2009			
	Labor Force	Employment	Unemployed	Rate	Labor Force	Employment	Unemployed	Rate	Labor Force	Employment	Unemployed	Rate
Athens Micro	23,900	21,970	1,930	8.1	23,940	20,960	2,980	12.4	24,140	20,810	3,330	13.8
Chattanooga City	79,960	76,100	3,860	4.8	80,360	74,090	6,270	7.8	79,740	73,540	6,200	7.8

## ESTIMATED NONFARM EMPLOYMENT (in thousands)

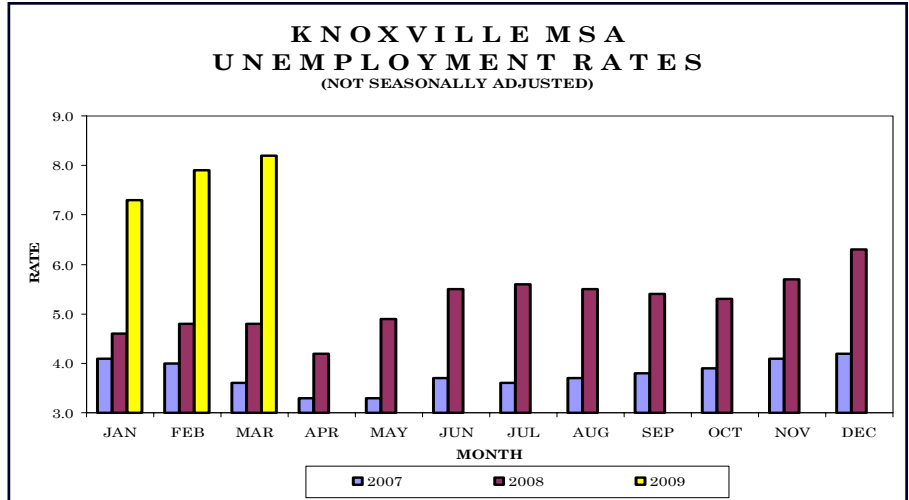
Industry	March 2008	Revised February 2009	Preliminary March 2009	Net Change	
				Mar. 2008 - Mar. 2009	Feb. 2009 - Mar. 2009
Total Nonfarm	247.2	240.6	240.9	-6.3	0.3
Total Private	210.8	205.0	205.3	-5.5	0.3
Goods Producing	45.1	41.1	40.8	-4.3	-0.3
Mining & Construction	11.1	9.2	9.2	-1.9	0.0
Manufacturing	34.0	31.9	31.6	-2.4	-0.3
Durable Goods Manufacturing	15.8	14.8	14.6	-1.2	-0.2
Nondurable Goods Manufacturing	18.2	17.1	17.0	-1.2	-0.1
Service Providing	202.1	199.5	200.1	-2.0	0.6
Trade, Transportation, & Utilities	55.0	53.2	53.3	-1.7	0.1
Wholesale Trade	8.9	8.7	8.7	-0.2	0.0
Retail Trade	26.3	25.7	25.8	-0.5	0.1
General Merchandise Stores	6.5	6.3	6.5	0.0	0.2
Transportation, Warehousing, & Utilities	19.8	18.8	18.8	-1.0	0.0
Information	3.7	3.7	3.7	0.0	0.0
Financial Activities	18.6	18.3	18.4	-0.2	0.1
Professional & Business Services	24.8	25.6	25.3	0.5	-0.3
Educational & Health Services	29.8	30.6	30.7	0.9	0.1
Leisure & Hospitality	23.0	21.8	22.5	-0.5	0.7
Accommodation & Food Services	20.8	19.6	20.3	-0.5	0.7
Other Services	10.8	10.7	10.6	-0.2	-0.1
Government	36.4	35.6	35.6	-0.8	0.0
Federal Government	6.1	5.8	5.7	-0.4	-0.1
State Government	6.2	6.2	6.3	0.1	0.1
Local Government	24.1	23.6	23.6	-0.5	0.0



# Knoxville MSA - Anderson, Blount, Knox, Loudon, Union

Total nonfarm employment decreased by 300 jobs from February 2009 to March 2009. There were seasonal decreases in durable goods manufacturing (down 400 jobs) and retail trade and professional/business services (both down 200 jobs). This was partially offset by increases in accommodation/food services (up 500 jobs) and administrative/support/waste management (up 200 jobs).

During the past 12 months, nonfarm employment decreased by 11,300 jobs. During that time, goods-producing jobs decreased by 5,600, while service-providing jobs declined by 5,700.



## CIVILIAN LABOR FORCE SUMMARY

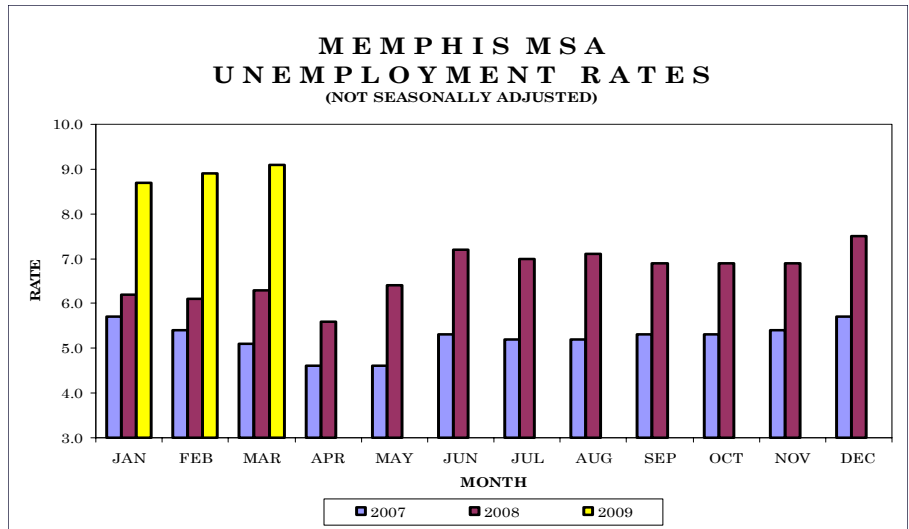
	March 2008				February 2009				March 2009			
	Labor Force	Employment	Unemployed	Rate	Labor Force	Employment	Unemployed	Rate	Labor Force	Employment	Unemployed	Rate
Harriman Micro	26,990	25,560	1,430	5.3	27,030	24,780	2,250	8.3	26,830	24,570	2,260	8.4
LaFollette Micro	50,940	47,640	3,300	6.5	49,570	44,240	5,320	10.7	49,260	43,860	5,400	11.0
Newport Micro	16,510	14,970	1,540	9.3	17,210	14,740	2,470	14.3	17,330	14,710	2,620	15.1
Sevierville Micro	17,610	16,460	1,160	6.6	17,670	15,600	2,070	11.7	17,690	15,460	2,230	12.6
Knoxville City	93,760	87,620	6,150	6.6	95,850	84,960	10,890	11.4	95,830	84,210	11,620	12.1
Maryville City	26,990	25,560	1,430	5.3	27,030	24,780	2,250	8.3	26,830	24,570	2,260	8.4
Oak Ridge City	13,280	12,620	660	5.0	13,190	12,230	960	7.3	13,130	12,130	1,010	7.7

## ESTIMATED NONFARM EMPLOYMENT (in thousands)

Industry	March 2008	Revised February 2009	Preliminary March 2009	Net Change	
				Mar. 2008 - Mar. 2009	Feb. 2009 - Mar. 2009
Total Nonfarm	335.2	324.2	323.9	-11.3	-0.3
Total Private	284.5	273.5	273.1	-11.4	-0.4
Goods Producing	54.2	49.0	48.6	-5.6	-0.4
Mining & Construction	18.2	16.7	16.7	-1.5	0.0
Manufacturing	36.0	32.3	31.9	-4.1	-0.4
Durable Goods Manufacturing	27.5	24.2	23.8	-3.7	-0.4
Nondurable Goods Manufacturing	8.5	8.1	8.1	-0.4	0.0
Service Providing	281.0	275.2	275.3	-5.7	0.1
Trade, Transportation, & Utilities	72.8	68.7	68.4	-4.4	-0.3
Wholesale Trade	16.6	16.6	16.5	-0.1	-0.1
Retail Trade	45.2	41.4	41.2	-4.0	-0.2
Food & Beverage Stores	7.1	7.0	7.0	-0.1	0.0
General Merchandise Stores	8.4	8.0	8.1	-0.3	0.1
Transportation, Warehousing, & Utilities	11.0	10.7	10.7	-0.3	0.0
Information	5.6	5.4	5.4	-0.2	0.0
Financial Activities	17.6	17.5	17.5	-0.1	0.0
Professional & Business Services	41.3	40.8	40.6	-0.7	-0.2
Administrative, Support, & Waste Management	20.1	19.5	19.7	-0.4	0.2
Educational & Health Services	42.9	43.6	43.6	0.7	0.0
Leisure & Hospitality	35.4	34.1	34.6	-0.8	0.5
Accommodation & Food Services	31.9	30.3	30.8	-1.1	0.5
Other Services	14.7	14.4	14.4	-0.3	0.0
Government	50.7	50.7	50.8	0.1	0.1
Federal Government	5.1	5.1	5.1	0.0	0.0
State Government	16.6	16.8	16.9	0.3	0.1
Local Government	29.0	28.8	28.8	-0.2	0.0



Total nonfarm employment increased by 1,700 jobs from February 2009 to March 2009. There were seasonal increases in leisure/hospitality (up 1,000 jobs), which includes an increase of 700 jobs in accommodation/food services; educational/health services (up 600 jobs), which includes an increase of 300 jobs in health care/social assistance; mining/construction (up 400 jobs); administrative/support/waste management and general merchandise stores (both up 300 jobs); and other services (up 200 jobs). This was partially offset by declines in durable goods manufacturing and wholesale trade (both down 300 jobs) and nondurable goods manufacturing and transportation/warehousing/utilities (both down 200 jobs).



**CIVILIAN LABOR FORCE SUMMARY**

	March 2008				February 2009				March 2009			
	Labor Force	Employment	Unemployed	Rate	Labor Force	Employment	Unemployed	Rate	Labor Force	Employment	Unemployed	Rate
Bartlett City	26,010	24,820	1,200	4.6	25,920	24,250	1,670	6.4	25,810	24,120	1,690	6.5
Collierville City	20,160	19,280	890	4.4	20,000	18,840	1,160	5.8	19,930	18,740	1,190	6.0
Germantown City	19,540	18,780	760	3.9	19,360	18,350	1,010	5.2	19,290	18,260	1,040	5.4
Memphis City	309,980	288,000	21,970	7.1	311,120	281,470	29,650	9.5	310,950	279,960	30,990	10.0

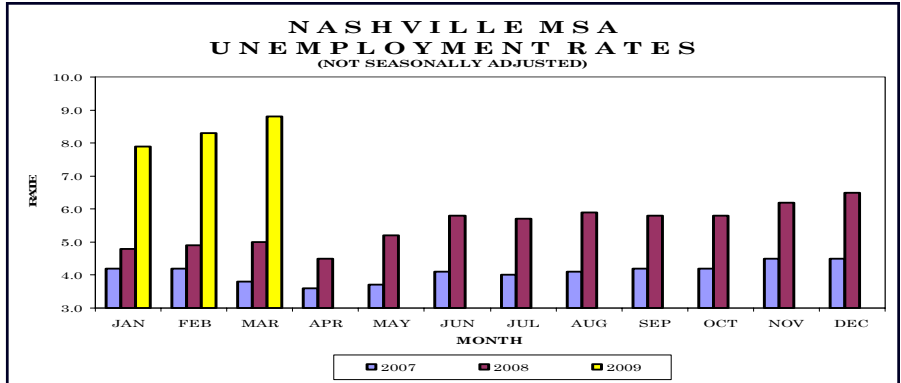
**ESTIMATED NONFARM EMPLOYMENT (in thousands)**

Industry	March 2008	Revised	Preliminary	Net Change	
		February 2009	March 2009	Mar. 2008	Feb. 2009
	2008	2009	2009	Mar. 2009	Mar. 2009
Total Nonfarm	634.0	618.4	<b>620.1</b>	-13.9	1.7
Total Private	542.9	526.9	<b>528.8</b>	-14.1	1.9
Goods Producing	75.9	71.8	<b>71.7</b>	-4.2	-0.1
Mining & Construction	25.0	23.4	<b>23.8</b>	-1.2	0.4
Manufacturing	50.9	48.4	<b>47.9</b>	-3.0	-0.5
Durable Goods Manufacturing	25.5	23.9	<b>23.6</b>	-1.9	-0.3
Nondurable Goods Manufacturing	25.4	24.5	<b>24.3</b>	-1.1	-0.2
Service Providing	558.1	546.6	<b>548.4</b>	-9.7	1.8
Trade, Transportation, & Utilities	171.7	165.8	<b>165.6</b>	-6.1	-0.2
Wholesale Trade	35.9	35.2	<b>34.9</b>	-1.0	-0.3
Retail Trade	71.1	67.1	<b>67.4</b>	-3.7	0.3
Food & Beverage Stores	9.9	9.6	<b>9.7</b>	-0.2	0.1
General Merchandise Stores	14.0	13.7	<b>14.0</b>	0.0	0.3
Transportation, Warehousing, & Utilities	64.7	63.5	<b>63.3</b>	-1.4	-0.2
Information	7.4	6.9	<b>6.9</b>	-0.5	0.0
Financial Activities	33.0	32.6	<b>32.7</b>	-0.3	0.1
Professional & Business Services	81.0	77.8	<b>78.1</b>	-2.9	0.3
Professional, Scientific, & Technical Services	19.5	18.9	<b>18.8</b>	-0.7	-0.1
Management of Companies & Enterprises	5.5	5.2	<b>5.3</b>	-0.2	0.1
Administrative, Support, & Waste Management	56.0	53.7	<b>54.0</b>	-2.0	0.3
Educational & Health Services	79.3	80.1	<b>80.7</b>	1.4	0.6
Health Care & Social Assistance	68.8	69.6	<b>69.9</b>	1.1	0.3
Leisure & Hospitality	70.5	66.8	<b>67.8</b>	-2.7	1.0
Accommodation & Food Services	63.1	59.3	<b>60.0</b>	-3.1	0.7
Other Services	24.1	25.1	<b>25.3</b>	1.2	0.2
Government	91.1	91.5	<b>91.3</b>	0.2	-0.2
Federal Government	14.8	15.3	<b>15.3</b>	0.5	0.0
State Government	15.8	15.9	<b>15.8</b>	0.0	-0.1
Local Government	60.5	60.3	<b>60.2</b>	-0.3	-0.1



## Nashville MSA — Cannon, Cheatham, Davidson, Dickson, Hickman, Macon, Robertson, Rutherford, Smith, Sumner, Trousdale, Williamson, Wilson

Total nonfarm employment increased by 1,400 jobs from February 2009 to March 2009. There were seasonal increases in leisure/hospitality (up 1,100 jobs), which includes increases of 700 jobs in food services/drinking places and 400 jobs in arts/entertainment/recreation; health care/social assistance and administrative/support/waste management (both up 400 jobs); and general merchandise stores (up 300 jobs). This was partially offset by declines in nondurable goods manufacturing (down 500 jobs); and durable goods manufacturing and transportation/warehousing/utilities (both down 200 jobs).



### CIVILIAN LABOR FORCE SUMMARY

	March 2008				February 2009				March 2009			
	Labor Force	Employment	Unemployed	Rate	Labor Force	Employment	Unemployed	Rate	Labor Force	Employment	Unemployed	Rate
Columbia Micro	38,020	35,010	3,010	7.9	37,490	33,140	4,350	11.6	37,130	31,350	5,780	15.6
Brentwood City	17,030	16,370	670	3.9	16,670	15,780	890	5.4	16,590	15,680	910	5.5
Columbia City	15,490	14,300	1,190	7.7	15,340	13,540	1,800	11.7	15,040	12,810	2,230	14.8
Franklin City	31,040	29,630	1,410	4.5	30,890	28,580	2,310	7.5	31,160	28,390	2,770	8.9
Gallatin City	13,330	12,370	960	7.2	13,690	11,930	1,760	12.8	13,680	11,850	1,830	13.3
Hendersonville	25,440	24,160	1,270	5.0	25,310	23,300	2,010	7.9	25,310	23,150	2,160	8.5
LaVergne City	13,920	12,870	1,050	7.6	13,640	11,900	1,740	12.7	13,600	11,830	1,770	13.0
Murfreesboro City	52,770	49,620	3,140	6.0	53,850	47,860	5,990	11.1	53,630	47,540	6,090	11.4
Nashville City	321,340	305,940	15,400	4.8	318,830	295,060	23,770	7.5	318,100	293,070	25,020	7.9
Smyrna City	20,150	19,010	1,140	5.6	20,570	18,330	2,240	10.9	20,440	18,210	2,230	10.9

### ESTIMATED NONFARM EMPLOYMENT (in thousands)

Industry	March 2008	Revised	Preliminary	Net Change	
		February 2009	March 2009	Mar. 2008	Feb. 2009
	2008	2009	2009	Mar. 2009	Mar. 2009
Total Nonfarm	762.0	733.1	<b>734.5</b>	-27.5	1.4
Total Private	657.7	628.9	<b>630.3</b>	-27.4	1.4
Goods Producing	115.7	103.0	<b>102.2</b>	-13.5	-0.8
Mining & Construction	40.1	35.5	<b>35.4</b>	-4.7	-0.1
Manufacturing	75.6	67.5	<b>66.8</b>	-8.8	-0.7
Durable Goods Manufacturing	51.3	44.4	<b>44.2</b>	-7.1	-0.2
Nondurable Goods Manufacturing	24.3	23.1	<b>22.6</b>	-1.7	-0.5
Service Providing	646.3	630.1	<b>632.3</b>	-14.0	2.2
Trade, Transportation, & Utilities	154.8	148.3	<b>148.4</b>	-6.4	0.1
Wholesale Trade	37.2	36.5	<b>36.5</b>	-0.7	0.0
Retail Trade	88.1	83.2	<b>83.5</b>	-4.6	0.3
Food & Beverage Stores	13.1	12.8	<b>12.8</b>	-0.3	0.0
General Merchandise Stores	18.4	17.3	<b>17.6</b>	-0.8	0.3
Transportation, Warehousing, & Utilities	29.5	28.6	<b>28.4</b>	-1.1	-0.2
Information	21.2	20.8	<b>20.9</b>	-0.3	0.1
Financial Activities	46.1	45.3	<b>45.4</b>	-0.7	0.1
Finance & Insurance	35.6	35.0	<b>35.1</b>	-0.5	0.1
Real Estate, Rental, & Leasing	10.5	10.3	<b>10.3</b>	-0.2	0.0
Professional & Business Services	99.3	93.5	<b>93.9</b>	-5.4	0.4
Professional, Scientific, & Technical Services	38.2	37.3	<b>37.3</b>	-0.9	0.0
Management of Companies & Enterprises	9.7	9.7	<b>9.7</b>	0.0	0.0
Administrative, Support, & Waste Management	51.4	46.5	<b>46.9</b>	-4.5	0.4
Educational & Health Services	109.8	112.0	<b>112.3</b>	2.5	0.3
Educational Services	18.4	19.0	<b>18.9</b>	0.5	-0.1
Health Care & Social Assistance	91.4	93.0	<b>93.4</b>	2.0	0.4
Leisure & Hospitality	79.3	76.6	<b>77.7</b>	-1.6	1.1
Arts, Entertainment, & Recreation	9.1	8.4	<b>8.8</b>	-0.3	0.4
Accommodation & Food Services	70.2	68.2	<b>68.9</b>	-1.3	0.7
Accommodation	11.9	11.5	<b>11.5</b>	-0.4	0.0
Food Services & Drinking Places	58.3	56.7	<b>57.4</b>	-0.9	0.7
Other Services	31.5	29.4	<b>29.5</b>	-2.0	0.1
Government	104.3	104.2	<b>104.2</b>	-0.1	0.0
Federal Government	11.7	11.9	<b>11.9</b>	0.2	0.0
State Government	30.7	29.7	<b>29.7</b>	-1.0	0.0
Local Government	61.9	62.6	<b>62.6</b>	0.7	0.0

## Nonfarm Employment (Smaller MSAs)

	Clarksville, TN-KY MSA		***Cleveland, TN MSA		Jackson, TN MSA	
	February 2009	March 2009	February 2009	March 2009	February 2009	March 2009
	Revised	Prelim.	Revised	Prelim.	Revised	Prelim.
Total Nonfarm	80,900	81,300	39,000	39,000	59,900	60,100
Total Private	62,000	62,200	33,500	33,500	47,500	47,500
Goods Producing	14,600	14,500	10,800	10,800	12,500	12,300
Mining & Construction	3,200	3,200	1,600	1,600	2,700	2,700
Manufacturing	11,400	11,300	9,200	9,200	9,800	9,600
Durable Goods Manufacturing	7,500	7,400	4,400	4,400	6,000	5,900
Nondurable Goods Manufacturing	3,900	3,900	4,800	4,800	3,800	3,700
Service Providing	66,300	66,800	28,200	28,200	47,400	47,800
Trade, Transportation, & Utilities	14,700	14,900	6,700	6,600	12,000	12,100
Wholesale Trade	1,800	1,800	900	900	2,600	2,700
Retail Trade	10,600	10,800	4,600	4,500	7,100	7,200
General Merchandise Stores	3,200	3,300	N/A	N/A	N/A	N/A
Transportation, Warehousing, & Utilities	2,300	2,300	1,200	1,200	2,300	2,200
Information	1,000	1,000	300	300	800	800
Financial Activities	2,500	2,500	1,700	1,700	1,700	1,700
Professional & Business Services	7,400	7,400	2,700	2,700	4,100	4,100
Educational & Health Services	10,200	10,200	5,000	5,000	8,800	8,800
Leisure & Hospitality	8,500	8,600	3,900	4,000	5,500	5,600
Other Services	3,100	3,100	2,400	2,400	2,100	2,100
Government	18,900	19,100	5,500	5,500	12,400	12,600
Federal Government	5,900	6,000	300	300	500	500
State Government	3,400	3,400	600	600	1,800	1,800
Local Government	9,600	9,700	4,600	4,600	10,100	10,300

	Johnson City, TN MSA		Kingsport/Bristol, TN-VA MSA		***Morristown, TN MSA	
	February 2009	March 2009	February 2009	March 2009	February 2009	March 2009
	Revised	Prelim.	Revised	Prelim.	Revised	Prelim.
Total Nonfarm	79,400	79,200	119,400	119,600	48,500	48,600
Total Private	62,600	62,500	103,300	103,500	41,200	41,300
Goods Producing	11,900	11,800	29,600	29,300	14,800	14,600
Mining & Construction	3,000	3,000	7,400	7,400	2,200	2,100
Manufacturing	8,900	8,800	22,200	21,900	12,600	12,500
Durable Goods Manufacturing	N/A	N/A	9,800	9,600	8,000	7,800
Nondurable Goods Manufacturing	N/A	N/A	12,400	12,300	N/A	N/A
Service Providing	67,500	67,400	89,800	90,300	33,700	34,000
Trade, Transportation, & Utilities	13,000	13,100	24,600	24,700	11,000	11,200
Wholesale Trade	2,300	2,300	5,000	5,000	2,300	2,300
Retail Trade	9,500	9,600	15,200	15,300	5,900	6,000
General Merchandise Stores	N/A	N/A	N/A	N/A	N/A	N/A
Transportation, Warehousing, & Utilities	1,200	1,200	4,400	4,400	2,800	2,900
Information	2,100	2,100	2,400	2,400	700	700
Financial Activities	4,700	4,700	4,200	4,200	1,200	1,200
Professional & Business Services	7,300	7,000	8,500	8,500	3,000	3,100
Educational & Health Services	13,300	13,300	18,300	18,300	5,800	5,800
Leisure & Hospitality	7,800	8,000	11,800	12,200	3,300	3,300
Other Services	2,500	2,500	3,900	3,900	1,400	1,400
Government	16,800	16,700	16,100	16,100	7,300	7,300
Federal Government	2,600	2,600	1,100	1,100	300	300
State Government	6,200	6,100	2,200	2,200	1,500	1,500
Local Government	8,000	8,000	12,800	12,800	5,500	5,500

\*\*\* These metro areas are no longer supported by BLS. The Department of Labor and Workforce Development is funding and collecting data for these areas.

**Clarksville MSA** is Montgomery County, Stewart County, Christian County, KY, & Trigg County, KY. **Cleveland MSA** is Bradley & Polk counties. **Jackson MSA** is Chester & Madison counties. **Johnson City MSA** is Carter, Unicoi, & Washington counties. **Kingsport-Bristol MSA** is Hawkins County, Sullivan County, Scott County, VA, Washington County, VA, & Bristol City, VA. **Morristown MSA** is Grainger, Hamblen, & Jefferson counties.

Tennessee Department of Labor & Workforce Development  
 Employment Security Division, Research & Statistics  
 220 French Landing Drive  
 Nashville, TN 37243

FIRST CLASS MAIL  
 POSTAGE & FEES PAID  
 BUREAU OF  
 LABOR STATISTICS  
 PERMIT NO. G-738

Phone: 615-741-2284  
 Fax: 615-532-9434  
 E-mail: wayne.meisels@state.tn.us



The Tennessee Department of Labor and Workforce Development is committed to principles of equal opportunity, equal access, and affirmative action. Auxiliary aids and services are available upon request to individuals with disabilities.  
 Tennessee Department of Labor and Workforce Development; Authorization 337607; This public document was promulgated for electronic use only.

We're on the Web  
[www.tennessee.gov/labor-wfd](http://www.tennessee.gov/labor-wfd)  
 Check out The Source at  
[www.sourcetn.org](http://www.sourcetn.org)



The Tennessee Department of Labor and Workforce Development is an equal opportunity employer/program. Auxiliary aids and services are available upon request. TTY: 615-532-2879 or 1-800-848-0299

## U.S. Consumer Price Index March 2009

Group	Index	Percent Change	
		Yearly	Monthly
<b>U.S. City Average</b>			
All Items (1982-84=100) / All Urban Consumers	212.709	-0.4	0.2
All Items (1982-84=100) / Wage Earners & Clerical Workers	207.218	-0.9	0.2
<b>South</b>			
All Items (1982-84=100) / All Urban Consumers	206.001	-0.3	0.3
All Items (1982-84=100) / Wage Earners & Clerical Workers	201.737	-1.1	0.3

## TENNESSEE UNEMPLOYMENT RATES

(Seasonally Adjusted)

