

The Labor Market Report

The Tennessee Department of Labor & Workforce Development

Phil Bredesen,
Governor

James G. Neeley,
Commissioner

November 2006 Data

Special Points of Interest:

- Multiple jobholders as a percent of total employment in the U.S. and states, 2004 and 2005
- Tennessee Historical Civilian Labor Force Series, 1976 to Present
- County Unemployment Rates
- Civilian Labor Force Summary
- State Unemployment Insurance Activities

Inside this Issue:

Chattanooga MSA	7
Knoxville MSA	8
Memphis MSA	9
Nashville MSA	10
Smaller MSAs	11
Consumer Price Index	12

Moonlighters Across the Nation

Multiple jobholders are directly related to either 1) a robust economy where there is a large supply of jobs for the labor force; or 2) the expenses of the people in the labor force are higher than the income they can earn at one job, thus creating the need to hold multiple jobs. Having multiple jobs, sometimes called “moonlighting,” is defined as “to hold a second job in addition to a regular one.” Many of these people have a third or a fourth job, too.

In the United States, 5.3 percent of the total employment consists of persons holding multiple jobs in 2005. This is down 0.1 percent from 2004. However, this is 0.9 percentage points below the peak U.S. average of 6.2 percent that occurred in 1996. The states with the largest declines in this nine-year period include Indiana (down 3.0 percent), Missouri (down 2.5 percent), and Arkansas and Wisconsin (both down 2.4 percent). Four states had increases from 1996. They are Alaska (up 1.1

percent), South Carolina (up 0.6 percent), and North Carolina and North Dakota (both up 0.5 percent).

The states with the current highest percentage of multiple jobholders were North Dakota and Wyoming, where both states had 9.9 percent of their employment in multiple jobholders. On the other side of the spectrum, West Virginia, at 3.6 percent, had the smallest percentage of moonlighters, followed by Nevada (at 3.8 percent).

The states that experienced the largest increase in multiple jobholders from 2004 to 2005 were Alaska (up 1.5 percent), Iowa (up 1.0 percent), Wisconsin and Wyoming (both up 0.9 percent), and Rhode Island (up 0.7 percent). States with the largest decrease during the year include Montana (down 0.8 percent) and Indiana, Virginia and West Virginia (all down 0.7 percent).

There are 19 states that have a percentage rate of moonlighters that is below the national average and

two states that are the same as the U.S. average. Seven of the eight states along the southern border of the United States had multiple jobholding rates equal to or below the U.S. figure. Ten of the 16 states in the South, plus the District of Columbia, reported multiple jobholding rates below the national rate.

Based on the U.S. demographics for 2005 (see table on Page 2), the profile of the most typical multiple jobholders is a widowed, divorced, or separated white female between the ages of 20 and 24. The least likely multiple jobholder would be a Hispanic or Latino single (never married) male over 65 years old. This is based on the percentage of persons in that group that are multiple jobholders.

For more information, look at the Web site for the Bureau of Labor Statistics, Current Population Survey, at www.bls.gov or the article in the November 2006 Monthly Labor Review.

Multiple Jobholders by Demographic & Economic Characteristics

Characteristics (Numbers in Thousands)	Both Sexes				Men				Women			
	Number		Rate ¹ (%)		Number		Rate ¹ (%)		Number		Rate ¹ (%)	
	2004	2005	2004	2005	2004	2005	2004	2005	2004	2005	2004	2005
AGE												
Total, 16 years and over	7,473	7,546	5.4	5.3	3,835	3,855	5.1	5.1	3,638	3,691	5.6	5.6
16 to 19 years	274	298	4.6	5.0	107	118	3.6	4.0	167	180	5.7	5.9
20 years and over	7,199	7,248	5.4	5.3	3,728	3,737	5.2	5.1	3,471	3,511	5.6	5.6
20 to 24 years	795	798	5.8	5.8	377	373	5.2	5.1	419	425	6.5	6.5
25 years and over	6,403	6,450	5.4	5.3	3,351	3,364	5.2	5.1	3,052	3,086	5.5	5.5
25 to 54 years	5,361	5,361	5.5	5.4	2,800	2,782	5.3	5.2	2,561	2,579	5.7	5.7
55 years and over	1,042	1,089	4.7	4.6	551	582	4.6	4.6	491	507	4.8	4.7
55 to 64 years	869	900	5.0	4.9	451	473	4.9	4.9	417	426	5.1	4.9
65 years and over	173	189	3.8	3.7	100	109	3.7	3.8	74	80	3.4	3.6
RACE AND HISPANIC/LATINO ETHNICITY												
White	6,357	6,342	5.5	5.4	3,266	3,268	5.2	5.1	3,091	3,074	5.9	5.8
Black or African American	705	763	4.7	5.0	360	363	5.2	5.1	345	400	4.3	4.9
Asian	226	257	3.8	4.1	118	128	3.6	3.8	108	128	3.9	4.4
Hispanic or Latino ethnicity	612	582	3.4	3.1	363	333	3.4	2.9	248	248	3.5	3.4
MARITAL STATUS												
Married, spouse present	4,125	4,109	5.2	5.1	2,408	2,416	5.3	5.3	1,718	1,693	5.0	4.9
Widowed, divorced, separated	1,303	1,324	5.9	5.8	463	452	5.1	4.8	840	872	6.4	6.5
Single (never married)	2,044	2,113	5.5	5.5	964	987	4.7	4.7	1,080	1,125	6.4	6.4
FULL- OR PART-TIME STATUS												
Primary job full time, secondary job part time	3,908	3,942	--	--	2,210	2,219	--	--	1,697	1,724	--	--
Primary and secondary jobs both part time	1,678	1,708	--	--	540	570	--	--	1,138	1,138	--	--
Primary and secondary jobs both full time	286	294	--	--	187	188	--	--	100	105	--	--
Hours vary on both jobs	1,564	1,558	--	--	879	859	--	--	685	698	--	--

¹Multiple jobholders as a percent of all employed persons in a specified group.

NOTES: Estimates for the above groups do not sum to totals because data not provided for all groups. Hispanic or Latino may be of any race and are classified by ethnicity and race. Dashes signify no data or non-published data. **SOURCE:** United States Bureau of Labor Statistics

Multiple Jobholders as a Percent of Total Employment by State

States	2004	2005	States	2004	2005	States	2004	2005
United States	5.4	5.3	Kentucky	6.0	6.3	North Dakota	10.1	9.9
Alabama	4.1	4.1	Louisiana	5.3	4.7	Ohio	5.8	6.2
Alaska	7.7	9.2	Maine	7.7	7.8	Oklahoma	6.5	6.1
Arizona	5.2	5.3	Maryland	5.8	5.6	Oregon	5.2	5.8
Arkansas	5.0	4.7	Massachusetts	5.4	5.8	Pennsylvania	5.5	5.2
California	4.4	4.4	Michigan	5.2	5.4	Rhode Island	5.8	6.5
Colorado	6.5	6.0	Minnesota	8.1	8.4	South Carolina	4.9	5.3
Connecticut	5.3	5.5	Mississippi	4.7	4.4	South Dakota	9.2	9.4
Delaware	4.6	4.8	Missouri	6.5	6.5	Tennessee	5.0	5.0
District of Columbia	4.6	5.2	Montana	9.0	8.2	Texas	4.9	4.6
Florida	4.3	4.1	Nebraska	8.5	9.1	Utah	8.8	8.2
Georgia	3.9	4.2	Nevada	4.0	3.8	Vermont	8.5	8.3
Hawaii	7.6	8.0	New Hampshire	6.4	6.3	Virginia	5.3	4.6
Idaho	8.6	8.0	New Jersey	4.6	4.6	Washington	5.9	5.4
Illinois	5.4	5.2	New Mexico	5.7	5.6	West Virginia	4.3	3.6
Indiana	5.2	4.5	New York	4.6	4.6	Wisconsin	6.6	7.5
Iowa	7.6	8.6	North Carolina	5.6	5.9	Wyoming	9.0	9.9
Kansas	8.8	8.3						

Source: *Monthly Labor Review*, November 2006

Statewide

HISTORICAL CIVILIAN LABOR FORCE

UNEMPLOYMENT RATES BY COUNTY*

(NUMBERS IN THOUSANDS)

MONTHLY DATA NOT SEASONALLY ADJUSTED

Year and Month	Civilian Labor Force							Unemployed Number	Rate (%)
	Total	Employment	Employed						
			Total	Nonfarm Employment					
			**Manu- facturing	**Trade	**Services				
1976	1,860.8	1,745.6	1,575.4	486.1	339.5	240.5	115.2	6.2	
1977	1,939.0	1,816.7	1,648.1	507.5	357.2	254.5	122.3	6.3	
1978	1,983.7	1,866.2	1,737.0	526.0	379.1	270.7	117.5	5.9	
1979	2,040.5	1,918.5	1,777.3	524.7	388.7	285.4	122.0	6.0	
1980	2,071.6	1,920.1	1,746.6	502.1	379.7	291.0	151.5	7.3	
1981	2,123.1	1,927.6	1,775.4	506.9	379.9	304.4	195.5	9.2	
1982	2,141.2	1,891.5	1,703.0	466.7	380.5	313.1	249.7	11.7	
1983	2,188.2	1,932.4	1,719.0	468.6	389.9	323.4	255.8	11.7	
1984	2,233.5	2,026.4	1,812.0	497.1	413.3	344.3	207.1	9.3	
1985	2,255.7	2,070.0	1,867.8	492.4	435.3	360.2	185.7	8.2	
1986	2,291.3	2,110.7	1,929.8	490.5	452.1	384.7	180.6	7.9	
1987	2,324.1	2,166.5	2,011.6	497.4	477.2	408.9	157.6	6.8	
1988	2,333.6	2,197.2	2,092.1	511.9	495.6	440.3	136.4	5.8	
1989	2,364.9	2,241.3	2,167.2	524.5	508.4	467.2	123.6	5.2	
1990	2,401.1	2,269.0	2,193.2	493.4	379.1	611.0	132.1	5.5	
1991	2,425.4	2,266.0	2,183.6	480.3	373.0	626.7	159.4	6.6	
1992	2,479.5	2,316.7	2,245.0	492.8	374.1	664.8	162.8	6.6	
1993	2,543.3	2,391.6	2,328.5	502.8	382.5	709.8	151.7	6.0	
1994	2,645.7	2,511.1	2,423.0	513.8	398.4	751.4	134.6	5.1	
1995	2,718.0	2,574.0	2,498.9	518.0	412.6	795.0	144.0	5.3	
1996	2,758.4	2,611.0	2,533.3	501.5	420.9	814.3	147.4	5.3	
1997	2,788.3	2,640.0	2,584.0	498.0	430.5	849.7	148.3	5.3	
1998	2,811.7	2,685.2	2,638.4	498.6	437.1	875.7	126.5	4.5	
1999	2,838.7	2,722.1	2,685.3	494.7	443.6	900.8	116.6	4.1	
2000	2,871.5	2,756.5	2,728.9	488.1	447.5	930.9	115.0	4.0	
2001	2,859.7	2,728.5	2,688.3	454.2	446.6	921.5	131.2	4.6	
2002	2,883.4	2,733.7	2,664.4	428.5	438.7	938.0	149.7	5.2	
2003	2,892.0	2,727.5	2,667.5	414.1	440.8	950.3	164.5	5.7	
2004	2,897.0	2,739.0	2,706.1	411.8	447.5	978.7	158.1	5.5	
2005	2,909.6	2,747.6	2,743.7	408.6	456.4	1,005.3	161.9	5.6	
2006									
January	2,896.7	2,732.2	2,716.8	403.7	457.2	990.5	164.5	5.7	
February	2,896.8	2,736.1	2,731.5	404.3	456.0	997.2	160.8	5.5	
March	2,916.5	2,759.1	2,753.3	405.3	459.7	1,007.5	157.5	5.4	
April	2,935.3	2,782.2	2,782.7	405.8	461.5	1,026.3	153.0	5.2	
May	2,951.9	2,805.3	2,788.8	406.0	463.3	1,029.6	146.6	5.0	
June	3,021.5	2,842.5	2,782.3	404.9	462.9	1,037.2	178.9	5.9	
July	3,031.7	2,849.6	2,763.7	400.5	463.0	1,035.0	182.1	6.0	
August	3,012.8	2,839.1	2,783.8	402.8	464.3	1,039.4	173.7	5.8	
September	2,997.3	2,867.5	2,797.4	403.8	465.3	1,038.8	129.8	4.3	
October (r)	3,023.5	2,894.1	2,799.5	398.8	471.3	1,038.1	129.5	4.3	
November (p)	3,039.0	2,892.9	2,810.8	397.6	480.3	1,038.1	146.2	4.8	
December									

(r)=revised

**These industries not comparable to industry employment data before

(p)=preliminary

1990 because of change to NAICS coding system.

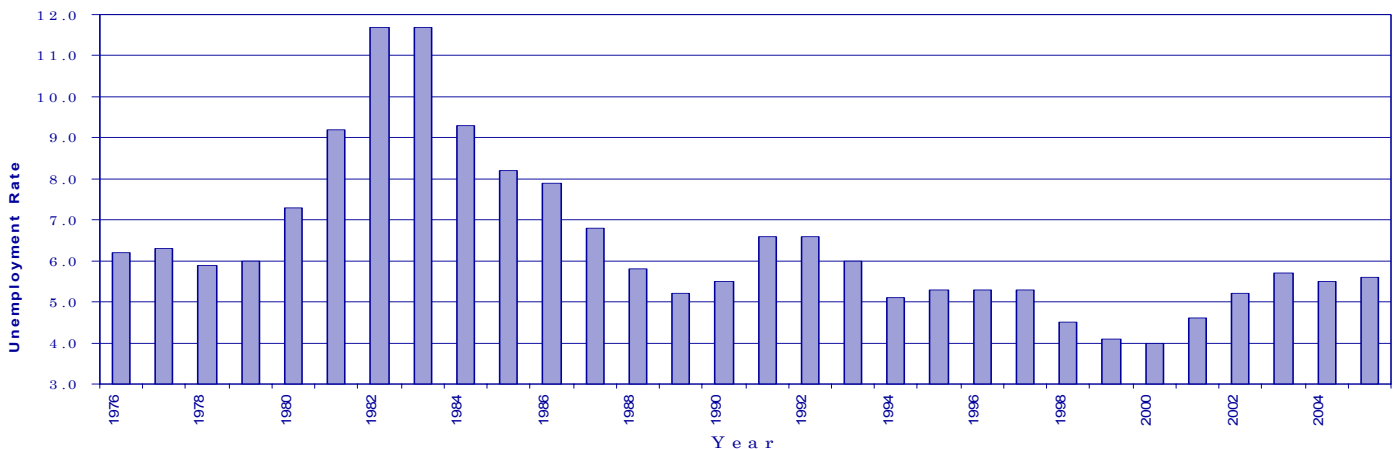
Trade = Wholesale and Retail Trade

Services = Professional/Business Services, Educational/Health Services, Leisure/Hospitality, and Other Services.

County	Nov 2005	Nov 2006	County	Nov 2005	Nov 2006
	Anderson	5.0		4.5	Lauderdale
Bedford	5.2	4.8	Lawrence	13.4	8.9
Benton	7.3	6.7	Lewis	8.6	6.7
Bledsoe	7.2	5.7	Lincoln	4.7	4.3
Blount	4.5	3.8	Loudon	4.4	4.0
Bradley	5.1	4.6	Macon	4.8	5.7
Campbell	6.0	5.7	Madison	5.6	5.1
Cannon	5.6	4.5	Marion	4.9	5.2
Carroll	6.9	6.3	Marshall	6.6	5.7
Carter	5.5	4.3	Maury	5.6	4.8
Cheatham	4.1	3.7	McMinn	5.7	5.2
Chester	5.4	5.6	McNairy	5.4	5.8
Claiborne	5.6	5.3	Meigs	7.4	6.2
Clay	13.5	9.3	Monroe	5.7	5.6
Cocke	6.9	6.3	Montgomery	4.9	4.8
Coffee	5.6	5.1	Moore	5.4	4.5
Crockett	7.0	6.2	Morgan	6.9	6.0
Cumberland	5.7	5.4	Obion	5.4	5.8
Davidson	4.7	4.1	Overton	5.6	6.6
Decatur	7.3	6.0	Perry	6.1	6.3
DeKalb	6.2	5.3	Pickett	7.6	9.0
Dickson	5.0	4.3	Polk	6.1	5.2
Dyer	5.8	6.3	Putnam	4.7	5.3
Fayette	5.6	8.4	Rhea	6.6	5.8
Fentress	6.4	7.1	Roane	5.7	5.1
Franklin	5.1	5.2	Robertson	4.6	4.0
Gibson	8.4	7.4	Rutherford	4.0	3.6
Giles	7.6	6.5	Scott	6.9	7.9
Grainger	5.5	6.0	Sequatchie	5.0	4.0
Greene	7.0	6.8	Sevier	4.9	4.1
Grundy	8.6	7.3	Shelby	6.0	5.4
Hamblen	6.1	5.2	Smith	4.7	5.0
Hamilton	4.6	4.0	Stewart	7.0	5.7
Hancock	8.3	6.5	Sullivan	4.5	4.2
Hardeman	7.9	8.0	Sumner	4.4	4.0
Hardin	6.7	6.1	Tipton	5.8	5.0
Hawkins	5.7	5.0	Trousdale	5.2	5.0
Haywood	7.8	8.1	Unicoi	5.9	6.4
Henderson	6.8	6.1	Union	5.3	4.0
Henry	7.0	6.5	Van Buren	8.6	7.6
Hickman	6.0	4.7	Warren	9.7	7.4
Houston	7.9	5.7	Washington	4.5	4.2
Humphreys	6.6	5.8	Wayne	12.9	8.2
Jackson	7.4	5.6	Weakley	5.8	5.6
Jefferson	5.5	5.0	White	10.3	7.9
Johnson	7.2	5.9	Williamson	3.5	3.0
Knox	4.2	3.6	Wilson	4.2	3.9
Lake	7.8	7.5			

*Data Not Seasonally Adjusted

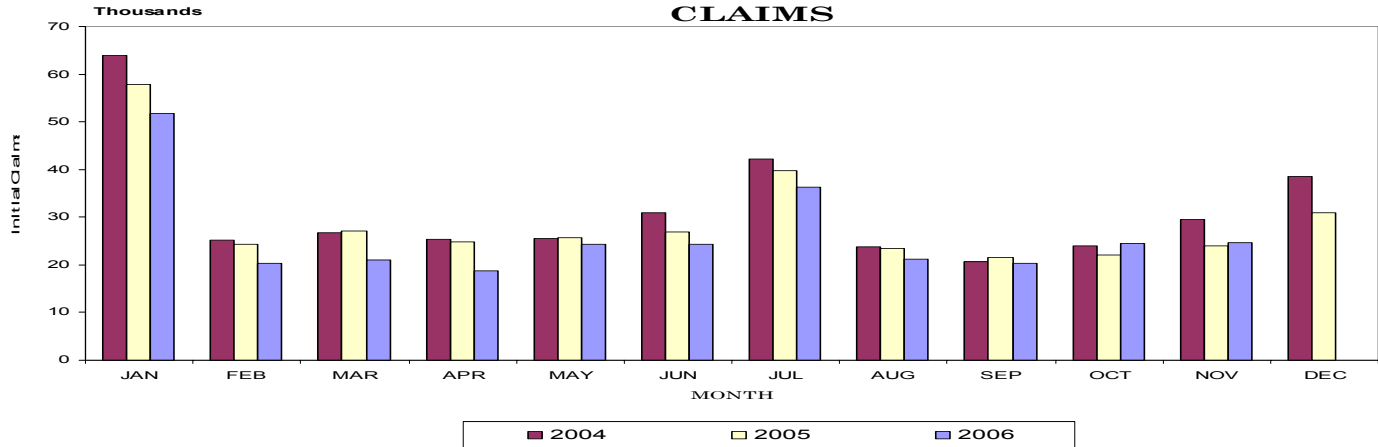
Unemployment Rates 1976-2005



Statewide

UNEMPLOYMENT INSURANCE ACTIVITIES

MONTHLY INITIAL CLAIMS

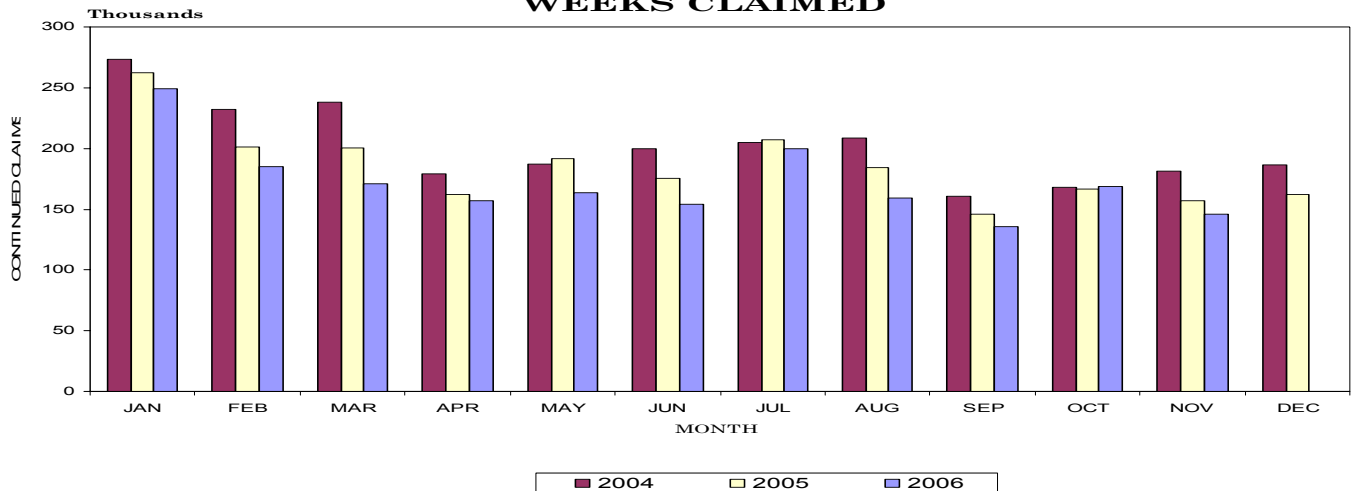


BENEFIT PROGRAMS

STATE BENEFIT PROGRAM				FEDERAL BENEFIT PROGRAMS			
CLAIMS	Nov. 2005	Oct. 2006	Nov. 2006	FORMER FEDERAL EMPLOYEES			
				Nov. 2005	Oct. 2006	Nov. 2006	
Initial Claims	23,946	24,431	24,719	Benefits Paid	\$469,051	\$284,827	\$277,130
Continued Weeks Claimed	156,638	169,122	145,946	Benefit Weeks Claimed	1,853	925	1,048
Nonmonetary Determinations	6,127	6,051	5,493	Initial Claims	215	128	188
Appeals Decisions	2,046	1,758	1,687	Continued Weeks Claimed	1,862	1,014	1,068
Lower Authority	1,678	1,423	1,432	Appeals Decisions	24	8	7
Higher Authority	368	335	255	FORMER MILITARY PERSONNEL			
BENEFITS				Benefits Paid	\$516,089	\$507,048	\$421,209
Amount Paid	\$31,764,559	\$32,980,135	\$27,365,452	Benefit Weeks Claimed	1,868	1,685	1,575
Benefit Weeks Paid	154,926	152,628	147,407	Initial Claims	268	147	125
Average Weekly Benefit Amount	\$217	\$222	\$221	Continued Weeks Claimed	1,871	1,822	1,511
First Payments	10,068	10,459	9,966	Appeals Decisions	4	4	4
Final Payments	4,323	4,362	3,712	*Trust Fund includes a one-time deposit in March 2002 of \$162 million of Reed Act funds.			
Average Weeks Duration	14	14	14				
Trust Fund Balance*	\$649,852,061	\$669,901,715	\$659,316,771				

CONTINUED WEEKS CLAIMED

MONTHLY CONTINUED WEEKS CLAIMED



Statewide

ESTIMATED NONFARM EMPLOYMENT (in thousands)

Industry	Revised		Preliminary	Net Change	
	November 2005	October 2006		Nov. 2005	Oct. 2006
Total Nonfarm	2,782.3	2,799.9	2,810.8	28.5	10.9
Total Private	2,360.8	2,376.9	2,385.6	24.8	8.7
Goods-Producing	531.8	528.0	526.6	-5.2	-1.4
Natural Resources & Mining	4.1	4.2	4.2	0.1	0.0
Construction	121.5	125.0	124.8	3.3	-0.2
Manufacturing	406.2	398.8	397.6	-8.6	-1.2
Durable Goods Manufacturing	252.1	249.5	248.6	-3.5	-0.9
Wood Product Manufacturing	17.6	17.7	17.7	0.1	0.0
Nonmetallic Mineral Product Manufacturing	16.1	16.4	16.4	0.3	0.0
Primary Metal Manufacturing	11.9	11.6	11.6	-0.3	0.0
Fabricated Metal Product Manufacturing	42.5	43.6	43.5	1.0	-0.1
Machinery Manufacturing	32.7	32.0	31.6	-1.1	-0.4
Computer & Electronic Product Manufacturing	10.1	8.8	8.7	-1.4	-0.1
Electrical Equipment & Appliance Manufacturing	23.2	22.7	22.8	-0.4	0.1
Transportation Equipment Manufacturing	63.7	62.6	62.3	-1.4	-0.3
Motor Vehicle Parts Manufacturing	37.7	37.1	37.1	-0.6	0.0
Furniture & Related Product Manufacturing	19.1	19.0	18.9	-0.2	-0.1
Miscellaneous Manufacturing	15.2	15.1	15.1	-0.1	0.0
Nondurable Goods Manufacturing	154.1	149.3	149.0	-5.1	-0.3
Food Manufacturing	34.6	34.7	34.6	0.0	-0.1
Animal Slaughtering & Processing	11.5	11.6	11.9	0.4	0.3
Bakeries & Tortilla Manufacturing	7.9	8.1	8.1	0.2	0.0
Beverage & Tobacco Product Manufacturing	5.2	4.7	4.6	-0.6	-0.1
Textile Mills	5.3	5.0	5.1	-0.2	0.1
Textile Product Mills	4.0	4.1	4.0	0.0	-0.1
Apparel Manufacturing	8.1	7.2	7.1	-1.0	-0.1
Paper Manufacturing	19.2	19.6	19.2	0.0	-0.4
Printing & Related Support Activities	19.1	18.3	18.4	-0.7	0.1
Chemical Manufacturing	26.9	26.3	26.3	-0.6	0.0
Plastics & Rubber Products Manufacturing	29.6	27.4	27.4	-2.2	0.0
Plastics Product Manufacturing	15.3	15.4	15.5	0.2	0.1
Rubber Product Manufacturing	14.3	12.0	11.9	-2.4	-0.1
Service-Providing	2,250.5	2,271.9	2,284.2	33.7	12.3
Trade, Transportation, & Utilities	615.9	616.2	625.6	9.7	9.4
Wholesale Trade	132.0	133.5	133.7	1.7	0.2
Merchant Wholesalers, Durable Goods	68.1	69.2	69.4	1.3	0.2
Merchant Wholesalers, Nondurable Goods	47.1	47.1	47.1	0.0	0.0
Wholesale Electronic Markets	16.8	17.2	17.2	0.4	0.0
Retail Trade	339.9	337.8	346.6	6.7	8.8
Motor Vehicle & Parts Dealers	44.0	45.4	45.4	1.4	0.0
Furniture & Home Furnishings Stores	10.2	10.2	10.5	0.3	0.3
Building Material, Garden Equipment, & Supplies	26.9	28.2	28.2	1.3	0.0
Food & Beverage Stores	45.6	43.9	44.2	-1.4	0.3
Health & Personal Care Stores	22.6	23.6	23.9	1.3	0.3
Gasoline Stations	24.4	24.2	24.2	-0.2	0.0
Clothing & Clothing Accessories Stores	33.6	32.5	34.5	0.9	2.0
Sporting Goods, Hobby, Book, & Music Stores	13.4	12.8	13.3	-0.1	0.5
General Merchandise Stores	78.0	76.4	81.2	3.2	4.8
Miscellaneous Store Retailers	19.7	19.5	19.8	0.1	0.3
Nonstore Retailers	11.8	11.3	11.7	-0.1	0.4
Transportation, Warehousing, & Utilities	144.0	144.9	145.3	1.3	0.4
Utilities	3.6	3.5	3.6	0.0	0.1
Transportation & Warehousing	140.4	141.4	141.7	1.3	0.3
Truck Transportation	62.9	64.1	64.0	1.1	-0.1
Information	49.5	49.4	49.7	0.2	0.3
Publishing Industries (except internet)	14.3	14.1	14.4	0.1	0.3
Telecommunications	15.4	15.7	15.7	0.3	0.0
Financial Activities	144.6	145.2	145.6	1.0	0.4
Finance & Insurance	108.0	108.0	108.3	0.3	0.3
Real Estate, Rental, & Leasing	36.6	37.2	37.3	0.7	0.1
Professional & Business Services	320.0	322.1	322.1	2.1	0.0
Professional, Scientific, & Technical Services	103.9	105.8	106.1	2.2	0.3
Management of Companies & Enterprises	23.1	24.2	24.2	1.1	0.0
Administrative, Support, & Waste Management	193.0	192.1	191.8	-1.2	-0.3
Educational & Health Services	334.0	340.5	341.3	7.3	0.8
Educational Services	46.0	46.9	47.2	1.2	0.3
Health Care & Social Assistance	288.0	293.6	294.1	6.1	0.5
Ambulatory Health Care Services	106.8	109.5	109.6	2.8	0.1
Hospitals	89.5	91.6	91.7	2.2	0.1
Nursing & Residential Care Facilities	51.7	52.0	52.2	0.5	0.2
Social Assistance	40.0	40.5	40.6	0.6	0.1
Leisure & Hospitality	263.4	273.0	272.2	8.8	-0.8
Arts, Entertainment, & Recreation	28.0	31.1	29.7	1.7	-1.4
Accommodation & Food Services	235.4	241.9	242.5	7.1	0.6
Accommodation	34.4	35.9	35.6	1.2	-0.3
Food Services & Drinking Places	201.0	206.0	206.9	5.9	0.9
Other Services	101.6	102.5	102.5	0.9	0.0
Repair & Maintenance	21.8	22.3	22.2	0.4	-0.1
Personal & Laundry Services	24.5	24.0	24.2	-0.3	0.2
Government	421.5	423.0	425.2	3.7	2.2
Federal Government	48.7	48.1	48.3	-0.4	0.2
State Government	99.1	99.6	100.1	1.0	0.5
State Government Educational Services	50.6	50.1	50.4	-0.2	0.3
Local Government	273.7	275.3	276.8	3.1	1.5
Local Government Educational Services	141.2	141.6	142.5	1.3	0.9

HOURS AND EARNINGS OF PRODUCTION WORKERS

AVERAGE WEEKLY EARNINGS

Industry	Nov. 2005	Oct. 2006	Nov. 2006
Manufacturing	\$559.13	\$554.83	\$554.33
Durable Goods Manufacturing	\$538.12	\$539.39	\$534.04
Fabricated Metal Product Manufacturing	\$594.83	\$611.07	\$607.58
Machinery Manufacturing	\$551.95	\$473.96	\$470.93
Nondurable Goods Manufacturing	\$595.35	\$581.05	\$589.07
Food Manufacturing	\$469.94	\$495.50	\$488.56

AVERAGE WEEKLY HOURS

Industry	Nov. 2005	Oct. 2006	Nov. 2006
Manufacturing	39.1	39.1	38.9
Durable Goods Manufacturing	38.3	38.5	38.2
Fabricated Metal Product Manufacturing	38.5	39.5	39.3
Machinery Manufacturing	40.2	34.0	34.2
Nondurable Goods Manufacturing	40.5	40.1	40.1
Food Manufacturing	36.6	37.2	36.9

AVERAGE HOURLY EARNINGS

Industry	Nov. 2005	Oct. 2006	Nov. 2006
Manufacturing	\$14.30	\$14.19	\$14.25
Durable Goods Manufacturing	\$14.05	\$14.01	\$13.98
Fabricated Metal Product Manufacturing	\$15.45	\$15.47	\$15.46
Machinery Manufacturing	\$13.73	\$13.94	\$13.77
Nondurable Goods Manufacturing	\$14.70	\$14.49	\$14.69
Food Manufacturing	\$12.84	\$13.32	\$13.24

NONFARM EMPLOYMENT AND LABOR FORCE IN TENNESSEE

Tennessee's seasonally adjusted estimated unemployment rate for November was 5.0 percent, up 0.5 percent from the October rate. This is the second consecutive month that the current rate is greater than the national average.

The United States' unemployment rate was 4.5 percent in November 2006. In November 2005, the national unemployment rate was 5.0 percent, and the state's unemployment rate was 5.5 percent.

Across Tennessee, the unemployment rate increased in 90 counties, decreased in two counties, and remained the same in three counties. The lowest rate occurred in Williamson County at 3.0 percent, up 0.4 percent from the previous month. The highest rate was Clay County's 9.3 percent, up from 8.3 percent in October 2006.

(Continued on Page 6)

CIVILIAN LABOR FORCE

CIVILIAN LABOR FORCE SUMMARY

November 2005				October 2006				Preliminary November 2006				
	Labor Force	Employment	Unemployed	Rate	Labor Force	Employment	Unemployed	Rate	Labor Force	Employment	Unemployed	Rate
Seasonally Adjusted												
U.S.	150,183,000	142,611,000	7,572,000	5.0	151,998,000	145,287,000	6,711,000	4.4	152,381,000	145,564,000	6,817,000	4.5
TENNESSEE	2,917,500	2,755,700	161,800	5.5	3,005,700	2,869,300	136,300	4.5	3,028,000	2,878,000	150,000	5.0
Not Seasonally Adjusted												
U.S.	150,239,000	142,968,000	7,271,000	4.8	152,397,000	146,125,000	6,272,000	4.1	152,590,000	146,014,000	6,576,000	4.3
TENNESSEE	2,937,000	2,780,500	156,500	5.3	3,023,500	2,894,100	129,500	4.3	3,039,000	2,892,900	146,200	4.8
Metropolitan Statistical Areas												
Chattanooga	253,700	241,850	11,850	4.7	259,350	249,050	10,300	4.0	260,340	249,570	10,760	4.1
Clarksville	106,080	99,850	6,220	5.9	107,830	102,700	5,120	4.8	109,410	103,630	5,790	5.3
Cleveland	53,960	51,110	2,850	5.3	55,500	53,190	2,310	4.2	55,560	52,950	2,610	4.7
Jackson	54,590	51,550	3,030	5.6	56,140	53,570	2,570	4.6	56,670	53,730	2,940	5.2
Johnson City	96,770	92,020	4,760	4.9	100,290	96,580	3,720	3.7	101,090	96,580	4,510	4.5
Kingsport-Bristol	140,620	133,670	6,940	4.9	143,060	137,240	5,820	4.1	143,330	136,840	6,500	4.5
Knoxville	343,150	328,170	14,980	4.4	353,940	342,270	11,670	3.3	356,420	342,970	13,450	3.8
Memphis	604,930	569,100	35,830	5.9	617,620	586,490	31,130	5.0	622,810	587,630	35,180	5.6
Morristown	63,530	59,840	3,690	5.8	65,020	62,050	2,970	4.6	65,220	61,790	3,430	5.3
Nashville	756,180	723,010	33,170	4.4	790,500	762,620	27,880	3.5	793,740	762,460	31,270	3.9
Micropolitan Statistical Areas												
Athens	23,870	22,510	1,360	5.7	24,610	23,440	1,170	4.7	24,690	23,400	1,300	5.2
Brownsville	8,950	8,260	700	7.8	9,080	8,360	720	7.9	9,070	8,330	730	8.1
Columbia	35,700	33,690	2,010	5.6	36,160	34,670	1,500	4.1	36,280	34,550	1,730	4.8
Cookeville	49,270	46,730	2,540	5.2	50,050	47,530	2,520	5.0	50,150	47,360	2,800	5.6
Crossville	22,240	20,960	1,280	5.7	22,610	21,600	1,020	4.5	22,550	21,320	1,230	5.4
Dyersburg	17,370	16,350	1,010	5.8	17,500	16,660	840	4.8	17,570	16,460	1,110	6.3
Greeneville	32,470	30,180	2,290	7.0	32,070	30,270	1,800	5.6	32,040	29,870	2,170	6.8
Harriman	25,760	24,290	1,470	5.7	26,160	24,990	1,170	4.5	26,380	25,040	1,340	5.1
Humboldt	20,710	18,970	1,740	8.4	20,820	19,520	1,300	6.2	21,110	19,550	1,560	7.4
LaFollette	17,060	16,040	1,020	6.0	17,520	16,640	880	5.0	17,590	16,580	1,010	5.7
Lawrenceburg	16,980	14,700	2,280	13.4	16,840	15,520	1,320	7.8	17,020	15,510	1,510	8.9
Lewisburg	12,570	11,740	830	6.6	12,760	12,130	630	4.9	12,780	12,050	720	5.7
Martin	15,500	14,590	910	5.8	16,110	15,210	900	5.6	16,330	15,410	920	5.6
McMinnville	17,970	16,230	1,740	9.7	17,540	16,330	1,210	6.9	17,570	16,270	1,290	7.4
Newport	15,840	14,750	1,090	6.9	16,040	15,130	900	5.6	16,160	15,130	1,020	6.3
Paris	13,910	12,940	970	7.0	13,760	12,960	790	5.8	13,780	12,890	890	6.5
Sevierville	44,650	42,480	2,170	4.9	47,010	45,400	1,610	3.4	46,810	44,880	1,930	4.1
Shelbyville	21,580	20,460	1,120	5.2	22,120	21,150	960	4.4	22,080	21,030	1,050	4.8
Tullahoma	49,010	46,380	2,630	5.4	49,820	47,500	2,320	4.7	50,040	47,490	2,550	5.1
Union City	18,230	17,140	1,090	6.0	18,700	17,770	930	5.0	19,280	18,100	1,180	6.1

(Continued from Page 5) Total nonfarm employment increased by 28,500 jobs from November 2005 to November 2006. During this period, there were increases in accommodation/food services (up 7,100 jobs), which includes an increase of 5,900 jobs in food services/drinking places and 1,200 jobs in accommodation; retail trade (up 6,700 jobs), which includes an increase of 3,200 jobs in general merchandise stores, 1,400 jobs in motor vehicle parts dealers and 1,300 jobs in both health/personal care stores and building material/garden equipment/supplies; health care/social assistance (up 6,100 jobs), which

includes an increase of 2,800 jobs in ambulatory health care services and 2,200 jobs in hospitals; construction (up 3,300 jobs); local government (up 3,100 jobs); professional/scientific/technical services (up 2,200 jobs); wholesale trade (up 1,700 jobs), which includes an increase of 1,300 jobs in durable goods merchant wholesalers; arts/entertainment/recreation (up 1,700 jobs); and educational services (up 1,200 jobs). This was partially offset by declines of 2,400 jobs in rubber product manufacturing, 1,400 jobs in each of food/beverage stores, computer/electronic product manufacturing, and

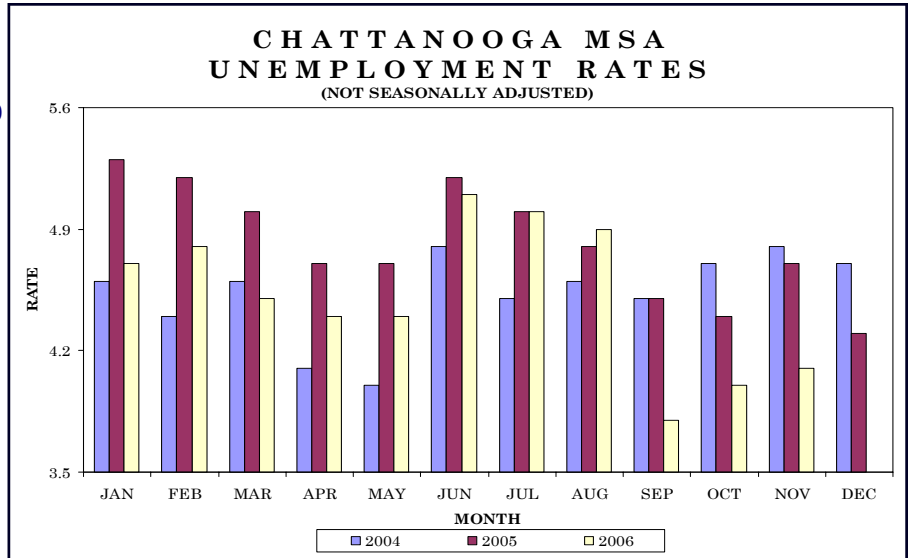
transportation equipment manufacturing, and 1,200 jobs in administrative/support/waste management.

During November, nonfarm employment increased by 10,900 jobs. There were seasonal increases in retail trade (up 8,800 jobs), which includes an increase of 4,800 jobs in general merchandise stores and 2,000 jobs in clothing/clothing accessories stores; and local government (up 1,500 jobs). This was partially offset by a decline in arts/entertainment/recreation (down 1,400 jobs).

The data from all the nonfarm employment estimates tables includes all full- and part-time nonfarm wage and salary employees who worked during or received pay for any part of the pay period that includes the 12th of the month. This is a count of jobs by place of work. Agricultural workers, proprietors, self-employed persons, workers in private households, and unpaid family workers are excluded. These numbers may not add due to rounding. Data is based on the 2005 benchmark.

Total nonfarm employment increased by 700 jobs from October 2006 to November 2006. There were seasonal increases in retail trade (up 600 jobs), which includes an increase of 200 jobs in general merchandise stores; and professional/business services (up 200 jobs).

During the past 12 months, nonfarm employment increased by 1,600 jobs. During that time, goods-producing jobs increased by 400, and service-providing jobs increased by 1,200.



HOURS AND EARNINGS OF PRODUCTION WORKERS

CHATTANOOGA MSA

Industry	Average Weekly Earnings		Average Weekly Hours			Average Hourly Earnings			
	Nov. 2005	Oct. 2006	Nov. 2005	Oct. 2006	Nov. 2006	Nov. 2005	Oct. 2006	Nov. 2006	
Manufacturing	\$531.58	\$535.25	\$529.72	41.4	41.3	41.0	\$12.84	\$12.96	\$12.92
Durable Goods Manufacturing	\$559.71	\$571.20	\$561.16	40.5	40.8	40.4	\$13.82	\$14.00	\$13.89
Nondurable Goods Manufacturing	\$506.40	\$504.57	\$502.57	42.2	41.7	41.5	\$12.00	\$12.10	\$12.11

ESTIMATED NONFARM EMPLOYMENT (in thousands)

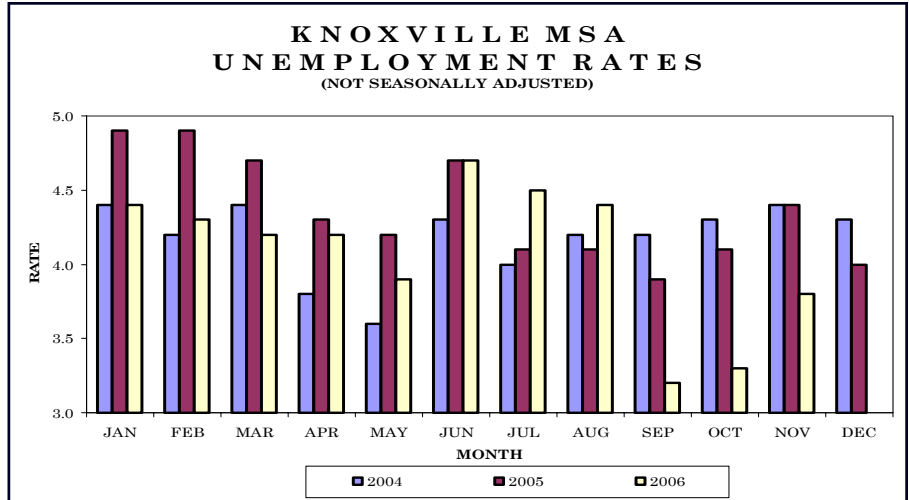
Industry	November 2005	Revised October 2006	Preliminary November 2006	Net Change	
				Nov. 2005 - Nov. 2006	Oct. 2006 - Nov. 2006
Total Nonfarm	243.8	244.7	245.4	1.6	0.7
Total Private	208.3	208.8	209.4	1.1	0.6
Goods-Producing	45.5	46.0	45.9	0.4	-0.1
Natural Resources, Mining, & Construction	10.5	10.8	10.7	0.2	-0.1
Manufacturing	35.0	35.2	35.2	0.2	0.0
Durable Goods Manufacturing	16.0	16.1	16.1	0.1	0.0
Nondurable Goods Manufacturing	19.0	19.1	19.1	0.1	0.0
Food Manufacturing	6.5	6.4	6.4	-0.1	0.0
Textile Mills	4.3	4.2	4.2	-0.1	0.0
Service-Providing	198.3	198.7	199.5	1.2	0.8
Trade, Transportation, & Utilities	57.4	57.3	57.9	0.5	0.6
Wholesale Trade	8.9	9.0	9.0	0.1	0.0
Retail Trade	27.4	27.1	27.7	0.3	0.6
General Merchandise Stores	6.4	6.5	6.7	0.3	0.2
Transportation, Warehousing, & Utilities	21.1	21.2	21.2	0.1	0.0
Information	2.7	2.6	2.6	-0.1	0.0
Financial Activities	18.7	18.7	18.7	0.0	0.0
Professional & Business Services	26.0	26.2	26.4	0.4	0.2
Professional, Scientific, & Technical Services	8.7	8.7	8.8	0.1	0.1
Management of Companies & Enterprises	4.0	3.9	3.9	-0.1	0.0
Administrative, Support, & Waste Management	13.3	13.6	13.7	0.4	0.1
Educational & Health Services	25.0	25.0	25.1	0.1	0.1
Leisure & Hospitality	22.2	22.6	22.5	0.3	-0.1
Accommodation & Food Services	19.4	19.8	19.7	0.3	-0.1
Other Services	10.8	10.4	10.3	-0.5	-0.1
Government	35.5	35.9	36.0	0.5	0.1
Federal Government	6.4	6.4	6.5	0.1	0.1
State Government	6.3	6.2	6.2	-0.1	0.0
Local Government	22.8	23.3	23.3	0.5	0.0



Knoxville MSA - Anderson, Blount, Knox, Loudon, Union

Total nonfarm employment increased by 2,000 jobs from October 2006 to November 2006. There were seasonal increases in retail trade (up 1,200 jobs), which includes an increase of 700 jobs in general merchandise stores; and food services/ drinking places (up 500 jobs).

During the past 12 months, nonfarm employment increased by 4,300 jobs. During that time, goods-producing jobs decreased by 100, while service-providing jobs increased by 4,400.



HOURS AND EARNINGS OF PRODUCTION WORKERS

KNOXVILLE MSA

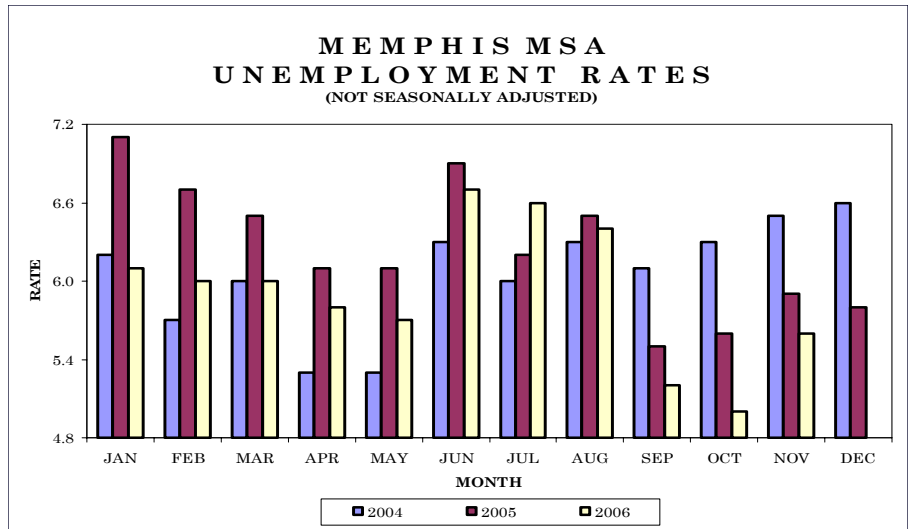
Industry	Average Weekly Earnings			Average Weekly Hours			Average Hourly Earnings		
	Nov. 2005	Oct. 2006	Nov. 2006	Nov. 2005	Oct. 2006	Nov. 2006	Nov. 2005	Oct. 2006	Nov. 2006
	Manufacturing	\$623.31	\$641.60	\$620.94	39.4	40.0	39.5	\$15.82	\$16.04
Durable Goods Manufacturing	\$688.80	\$704.71	\$674.63	40.0	40.2	39.2	\$17.22	\$17.53	\$17.21
Nondurable Goods Manufacturing	\$474.24	\$498.89	\$499.72	38.0	39.5	40.3	\$12.48	\$12.63	\$12.40

ESTIMATED NONFARM EMPLOYMENT (in thousands)

Industry	November 2005	Revised	Preliminary	Net Change	
		October 2006	November 2006	Nov. 2005	Oct. 2006
Total Nonfarm	333.0	335.3	337.3	4.3	2.0
Total Private	279.3	281.5	283.4	4.1	1.9
Goods-Producing	55.3	55.3	55.2	-0.1	-0.1
Natural Resources, Mining, & Construction	17.1	17.4	17.4	0.3	0.0
Manufacturing	38.2	37.9	37.8	-0.4	-0.1
Durable Goods Manufacturing	28.4	28.0	28.0	-0.4	0.0
Fabricated Metal Product Manufacturing	8.3	8.2	8.2	-0.1	0.0
Transportation Equipment Manufacturing	8.9	8.8	8.8	-0.1	0.0
Nondurable Goods Manufacturing	9.8	9.9	9.8	0.0	-0.1
Service-Providing	277.7	280.0	282.1	4.4	2.1
Trade, Transportation, & Utilities	71.6	71.5	72.8	1.2	1.3
Wholesale Trade	16.2	16.2	16.2	0.0	0.0
Retail Trade	44.8	44.7	45.9	1.1	1.2
Food & Beverage Stores	5.7	5.7	5.7	0.0	0.0
General Merchandise Stores	9.8	9.4	10.1	0.3	0.7
Transportation, Warehousing, & Utilities	10.6	10.6	10.7	0.1	0.1
Information	6.0	6.1	6.1	0.1	0.0
Financial Activities	17.6	18.0	18.1	0.5	0.1
Professional & Business Services	39.6	39.8	39.8	0.2	0.0
Administrative, Support, & Waste Management	19.9	20.0	19.9	0.0	-0.1
Educational & Health Services	39.7	40.5	40.6	0.9	0.1
Leisure & Hospitality	35.6	35.9	36.4	0.8	0.5
Accommodation & Food Services	32.5	32.8	33.3	0.8	0.5
Food Services & Drinking Places	29.8	30.2	30.7	0.9	0.5
Other Services	13.9	14.4	14.4	0.5	0.0
Government	53.7	53.8	53.9	0.2	0.1
Federal Government	5.0	5.1	5.1	0.1	0.0
State Government	19.4	19.3	19.4	0.0	0.1
Local Government	29.3	29.4	29.4	0.1	0.0

Total nonfarm employment increased by 3,100 jobs from October 2006 to November 2006. There were seasonal increases in retail trade (up 2,000 jobs), which includes an increase of 600 jobs in general merchandise stores; administrative/support/waste management and local government (both up 400 jobs); transportation/warehousing/utilities (up 300 jobs); and health care/social assistance and wholesale trade (both up 200 jobs). This was partially offset by declines in leisure/hospitality (down 500 jobs), which includes a drop of 300 jobs in accommodation/food services; and durable goods manufacturing (down 200 jobs).

During the last 12 months, there was an increase of 6,500 jobs. During that time, goods-producing decreased by 900, and service-providing jobs increased by 7,400.



HOURS AND EARNINGS OF PRODUCTION WORKERS MEMPHIS MSA

Industry	Average Weekly Earnings			Average Weekly Hours			Average Hourly Earnings		
	Nov. 2005	Oct. 2006	Nov. 2006	Nov. 2005	Oct. 2006	Nov. 2006	Nov. 2005	Oct. 2006	Nov. 2006
Manufacturing	\$624.67	\$653.18	\$678.26	43.2	43.2	44.1	\$14.46	\$15.12	\$15.38
Durable Goods Manufacturing	\$531.28	\$545.29	\$567.83	39.5	39.6	40.3	\$13.45	\$13.77	\$14.09
Nondurable Goods Manufacturing	\$707.27	\$761.90	\$783.71	46.5	46.8	47.7	\$15.21	\$16.28	\$16.43

ESTIMATED NONFARM EMPLOYMENT (in thousands)

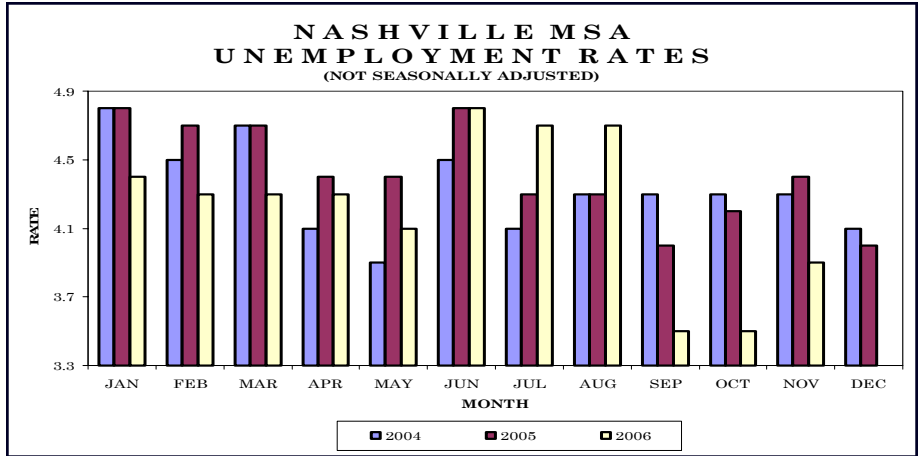
Industry	November 2005	Revised October 2006	Preliminary November 2006	Net Change	
	2005	2006	2006	Nov. 2005 - Nov. 2006	Oct. 2006 - Nov. 2006
Total Nonfarm	635.8	639.2	642.3	6.5	3.1
Total Private	543.8	546.6	549.2	5.4	2.6
Goods-Producing	79.7	79.0	78.8	-0.9	-0.2
Natural Resources, Mining, & Construction	26.1	26.3	26.4	0.3	0.1
Manufacturing	53.6	52.7	52.4	-1.2	-0.3
Durable Goods Manufacturing	25.1	24.8	24.6	-0.5	-0.2
Nondurable Goods Manufacturing	28.5	27.9	27.8	-0.7	-0.1
Service-Providing	556.1	560.2	563.5	7.4	3.3
Trade, Transportation, & Utilities	175.4	175.0	177.5	2.1	2.5
Wholesale Trade	37.2	37.4	37.6	0.4	0.2
Retail Trade	74.4	73.4	75.4	1.0	2.0
Food & Beverage Stores	10.0	9.7	9.8	-0.2	0.1
General Merchandise Stores	15.2	14.9	15.5	0.3	0.6
Transportation, Warehousing, & Utilities	63.8	64.2	64.5	0.7	0.3
Truck Transportation	15.5	15.9	15.9	0.4	0.0
Warehousing & Storage	8.3	8.5	8.6	0.3	0.1
Information	8.3	8.3	8.3	0.0	0.0
Financial Activities	32.9	32.3	32.4	-0.5	0.1
Professional & Business Services	80.6	80.6	81.1	0.5	0.5
Professional, Scientific, & Technical Services	19.5	19.8	19.9	0.4	0.1
Management of Companies & Enterprises	5.0	5.0	5.0	0.0	0.0
Administrative, Support, & Waste Management	56.1	55.8	56.2	0.1	0.4
Educational & Health Services	74.5	75.7	75.9	1.4	0.2
Health Care & Social Assistance	64.5	65.6	65.8	1.3	0.2
Hospitals	24.9	25.3	25.4	0.5	0.1
Leisure & Hospitality	67.4	70.5	70.0	2.6	-0.5
Accommodation & Food Services	61.1	63.5	63.2	2.1	-0.3
Food Services & Drinking Places	41.8	43.3	43.2	1.4	-0.1
Other Services	25.0	25.2	25.2	0.2	0.0
Government	92.0	92.6	93.1	1.1	0.5
Federal Government	14.8	14.8	14.9	0.1	0.1
State Government	17.3	17.8	17.8	0.5	0.0
Local Government	59.9	60.0	60.4	0.5	0.4



Nashville MSA — Cannon, Cheatham, Davidson, Dickson, Hickman, Macon, Robertson, Rutherford, Smith, Sumner, Trousdale, Williamson, Wilson

Total nonfarm employment increased by 3,000 jobs from October to November. There were seasonal increases in retail trade (up 2,100 jobs), which includes an increase of 1,200 jobs in general merchandise stores; professional/scientific/technical services (up 500 jobs); local government and food services/drinking places (both up 400 jobs); and transportation/warehousing/utilities (up 300 jobs).

This was partially offset by declines in arts/entertainment/recreation (down 400 jobs), and natural resources/mining/construction and state government (both down 200 jobs).



HOURS AND EARNINGS OF PRODUCTION WORKERS NASHVILLE MSA

Industry	Average Weekly Earnings			Average Weekly Hours			Average Hourly Earnings		
	Nov. 2005	Oct. 2006	Nov. 2006	Nov. 2005	Oct. 2006	Nov. 2006	Nov. 2005	Oct. 2006	Nov. 2006
Manufacturing	\$594.40	\$587.73	\$578.00	39.6	39.9	39.4	\$15.01	\$14.73	\$14.67
Durable Goods Manufacturing	\$631.91	\$592.80	\$578.39	40.9	40.0	39.4	\$15.45	\$14.82	\$14.68
Nondurable Goods Manufacturing	\$518.00	\$579.09	\$575.75	37.0	39.8	39.3	\$14.00	\$14.55	\$14.65

ESTIMATED NONFARM EMPLOYMENT (in thousands)

Industry	November 2005	Revised October 2006	Preliminary November 2006	Net Change	
				Nov. 2005 Nov. 2006	Oct. 2006 Nov. 2006
Total Nonfarm	750.4	764.8	767.8	17.4	3.0
Total Private	652.1	665.2	667.9	15.8	2.7
Goods-Producing	120.9	122.0	121.8	0.9	-0.2
Natural Resources, Mining, & Construction	36.2	37.4	37.2	1.0	-0.2
Manufacturing	84.7	84.6	84.6	-0.1	0.0
Durable Goods Manufacturing	57.6	57.5	57.4	-0.2	-0.1
Computer & Electronic Product Manufacturing	4.8	4.8	4.7	-0.1	-0.1
Electrical Equipment & Appliance Manufacturing	7.3	7.2	7.2	-0.1	0.0
Transportation Equipment Manufacturing	19.5	19.6	19.6	0.1	0.0
Nondurable Goods Manufacturing	27.1	27.1	27.2	0.1	0.1
Service-Providing	629.5	642.8	646.0	16.5	3.2
Trade, Transportation, & Utilities	156.2	157.2	159.5	3.3	2.3
Wholesale Trade	36.6	37.5	37.4	0.8	-0.1
Retail Trade	90.4	91.0	93.1	2.7	2.1
Food & Beverage Stores	11.6	12.0	12.1	0.5	0.1
General Merchandise Stores	18.9	18.5	19.7	0.8	1.2
Transportation, Warehousing, & Utilities	29.2	28.7	29.0	-0.2	0.3
Information	19.8	20.3	20.3	0.5	0.0
Financial Activities	46.0	46.8	46.7	0.7	-0.1
Finance & Insurance	35.1	35.7	35.6	0.5	-0.1
Real Estate, Rental, & Leasing	10.9	11.1	11.1	0.2	0.0
Professional & Business Services	100.4	104.2	104.8	4.4	0.6
Professional, Scientific, & Technical Services	34.4	34.9	35.4	1.0	0.5
Management of Companies & Enterprises	7.1	7.2	7.3	0.2	0.1
Administrative, Support, & Waste Management	58.9	62.1	62.1	3.2	0.0
Educational & Health Services	102.8	105.7	105.7	2.9	0.0
Educational Services	22.6	23.5	23.5	0.9	0.0
Health Care & Social Assistance	80.2	82.2	82.2	2.0	0.0
Hospitals	27.7	28.1	28.0	0.3	-0.1
Leisure & Hospitality	75.8	79.2	79.2	3.4	0.0
Arts, Entertainment, & Recreation	9.2	10.0	9.6	0.4	-0.4
Accommodation & Food Services	66.6	69.2	69.6	3.0	0.4
Accommodation	12.7	13.6	13.6	0.9	0.0
Food Services & Drinking Places	53.9	55.6	56.0	2.1	0.4
Other Services	30.2	29.8	29.9	-0.3	0.1
Government	98.3	99.6	99.9	1.6	0.3
Federal Government	11.5	11.3	11.4	-0.1	0.1
State Government	28.7	29.4	29.2	0.5	-0.2
Local Government	58.1	58.9	59.3	1.2	0.4

Nonfarm Employment (Smaller MSAs)

	Clarksville, TN-KY MSA		Cleveland, TN MSA		Jackson, TN MSA	
	October '06	November '06	October '06	November '06	October '06	November '06
	Revised	Prelim.	Revised	Prelim.	Revised	Prelim.
Total Nonfarm	84,300	85,000	42,600	42,600	62,400	62,700
Total Private	65,400	66,000	36,700	36,700	50,400	50,800
Goods-Producing	17,000	17,100	11,700	11,700	14,800	14,700
Service-Providing	67,300	67,900	30,900	30,900	47,600	48,000
Private Service-Providing	48,400	48,900	25,000	25,000	35,600	36,100
Natural Resources/Construction	3,100	3,100	1,800	1,800	3,400	3,300
Manufacturing	13,900	14,000	9,900	9,900	11,400	11,400
Durable Goods	9,300	9,300	5,600	5,600	7,500	7,500
Nondurable Goods	4,600	4,700	4,300	4,300	3,900	3,900
Trade/Transportation/Utilities	15,800	15,900	7,100	7,200	13,300	13,600
Wholesale Trade	1,900	1,900	1,700	1,700	2,700	2,700
Retail Trade	11,300	11,400	4,400	4,500	8,000	8,300
General Merchandise Stores	3,400	3,400	NA	NA	NA	NA
Transportation/Warehousing/Utilities	2,600	2,600	1,000	1,000	2,600	2,600
Information	1,200	1,300	300	300	700	700
Financial Activities	2,600	2,700	1,700	1,700	1,900	1,900
Professional/Business Services	7,800	8,100	4,400	4,400	3,900	3,900
Educational/Health Services	9,200	9,100	4,800	4,700	8,100	8,300
Leisure/Hospitality	8,800	8,800	4,300	4,300	5,400	5,400
Other Services	3,000	3,000	2,400	2,400	2,300	2,300
Government	18,900	19,000	5,900	5,900	12,000	11,900
Federal Government	5,100	5,100	300	300	600	600
State Government	4,100	4,100	700	700	1,900	1,800
Local Government	9,700	9,800	4,900	4,900	9,500	9,500

	Johnson City, TN MSA		Kingsport/Bristol, TN-VA MSA		Morristown, TN MSA	
	October '06	November '06	October '06	November '06	October '06	November '06
	Revised	Prelim.	Revised	Prelim.	Revised	Prelim.
Total Nonfarm	83,200	84,000	121,100	121,400	51,700	51,600
Total Private	66,900	67,700	105,100	105,300	44,800	44,700
Goods-Producing	13,400	13,700	32,600	32,600	17,700	17,600
Service-Providing	69,800	70,300	88,500	88,800	34,000	34,000
Private Service-Providing	53,500	54,000	72,500	72,700	27,100	27,100
Natural Resources/Construction	3,000	3,000	7,400	7,400	1,800	1,800
Manufacturing	10,400	10,700	25,200	25,200	15,900	15,800
Durable Goods	NA	NA	11,800	11,800	11,100	11,000
Nondurable Goods	NA	NA	13,400	13,400	NA	NA
Trade/Transportation/Utilities	14,500	15,000	24,600	24,900	10,400	10,500
Wholesale Trade	2,900	2,900	5,500	5,500	2,000	2,000
Retail Trade	10,400	10,900	14,600	14,900	5,600	5,700
General Merchandise Stores	NA	NA	NA	NA	NA	NA
Transportation/Warehousing/Utilities	1,200	1,200	4,500	4,500	2,800	2,800
Information	2,600	2,600	1,800	1,800	700	700
Financial Activities	4,300	4,300	4,100	4,100	2,100	2,100
Professional/Business Services	9,300	9,700	8,500	8,500	4,200	4,100
Educational/Health Services	11,700	11,400	16,800	16,800	5,100	5,100
Leisure/Hospitality	8,300	8,200	12,200	12,100	2,900	2,900
Other Services	2,800	2,800	4,500	4,500	1,700	1,700
Government	16,300	16,300	16,000	16,100	6,900	6,900
Federal Government	2,200	2,200	1,200	1,200	300	300
State Government	6,100	6,200	2,300	2,300	1,400	1,400
Local Government	8,000	7,900	12,500	12,600	5,200	5,200

Clarksville MSA is Montgomery County, Stewart County, Christian County, KY, & Trigg County, KY. **Cleveland MSA** is Bradley & Polk counties. **Jackson MSA** is Chester & Madison counties. **Johnson City MSA** is Carter, Unicoi, & Washington counties. **Kingsport-Bristol MSA** is Hawkins County, Sullivan County, Scott County, VA, Washington County, VA, & Bristol City, VA. **Morristown MSA** is Grainger, Hamblen, & Jefferson counties.

Tennessee Department of Labor & Workforce Development
 Employment Security Division, Research & Statistics
 11th Floor, Davy Crockett Tower
 500 James Robertson Parkway
 Nashville, TN 37245

FIRST CLASS MAIL
 POSTAGE & FEES PAID
 BUREAU OF
 LABOR STATISTICS
 PERMIT NO. G-738

Phone: 615-741-2284
 Fax: 615-532-9434
 Email: wayne.meisels@state.tn.us



We're on the Web
www.tennessee.gov/labor-wfd
 Check out The Source at
www.tennessee.gov/labor-wfd/source

The Tennessee Department of Labor and Workforce Development is committed to principles of equal opportunity, equal access, and affirmative action. Auxiliary aids and services are available upon request to individuals with disabilities.
 Tennessee Department of Labor and Workforce Development; Authorization 337607; This public document was promulgated for electronic use only.



U.S. Consumer Price Index November 2006

Group	Index	Percent Change	
		Yearly	Monthly
U.S. City Average			
All Items (1982-84=100) / All Urban Consumers	201.5	2.0	-0.1
All Items (1982-84=100) / Wage Earners & Clerical Workers	196.8	1.8	-0.1
South			
All Items (1982-84=100) / All Urban Consumers	194.3	1.9	-0.2
All Items (1982-84=100) / Wage Earners & Clerical Workers	161.1	1.6	-0.2

