



The Labor Market Report

State Minimum Wages

**November
2014**

**Bill Haslam,
Governor**

TENNESSEE

Department of Labor and Workforce Development

In 1912, Massachusetts organized a commission recommending noncompulsory minimum wages for women and children. Within eight years, at least thirteen U.S. states and the District of Columbia would pass minimum wage laws. The United States Supreme Court consistently invalidated compulsory minimum wage laws as the court said that minimum wages interfered with the ability of employers to freely negotiate appropriate wage contracts.

The minimum wage was established in the United States in 1938 (pursuant to the Fair Labor Standards Act), at \$0.25 per hour (\$4.07 in 2012 dollars). For the first time, the Supreme Court upheld the Fair Labor Standards Act, holding that Congress had the power under the Commerce Clause to regulate employment conditions.

The minimum wage had its highest purchasing value in 1968, when it was \$1.60 per hour (\$10.94 in 2014 dollars). From 1981 to 1990, the minimum wage remained at \$3.35 per hour. In 1984 the real minimum wage was \$3.35. Measured in real terms (adjusted for inflation) using 1984 dollars, the real minimum wage in 2013 was \$3.23.

From 1997 through 2007, the federal minimum wage was \$5.15 per hour. In 2007, amendments increased the minimum hourly wage to \$5.85 with step increases to \$7.25 in 2009. Congress gave states the power to set their minimum wage and as of August 1, 2014, 23 states and the District of Columbia had set higher minimum wages. Some counties and cities, set minimum wages higher than their state. Five states, including Tennessee, have no laws addressing minimum wages.

Who Isn't Covered

If the job is not subject to the federal

Fair Labor Standards Act, then state, city, or other local laws may determine the minimum wage. A common exemption to the federal minimum wage is a company having yearly revenue of less than \$500,000 while not engaging in any interstate commerce. Workers who receive a portion of their salary from tips are required only to have their total compensation, including tips, meet the minimum wage. Their hourly wage, before tips, is \$2.13. Seven states do not allow for a tip credit. Additional exemptions to minimum wages include many seasonal employees, student employees, and certain disabled employees. The Fair Minimum Wage Act of 2007 states that persons under the age of 20 may be paid \$4.25 for the first 90 calendar days of their employment.

Effects on Job Growth

A 2014 Center for Economic and Policy Research (CEPR) study found that job creation is faster in states that have raised their minimum wage. Washington State has higher job creation than the rest of the U.S. while having the highest minimum wage.

However, the Congressional Budget Office (CBO) issued a report saying that increasing the minimum wage to \$10.10 would create a net job loss of 500,000. The report acknowledged the probability of an outcome ranging from a slight reduction in jobs to a reduction of up to 1 million. Critics of the report say the CBO job loss projection is based upon questionable estimates using inconsistent methodologies. Seven Nobel Prize winners in Economic Sciences endorsed an increase in the minimum wage saying research shows higher pay doesn't lead to fewer jobs. A 2013 CEPR review of studies conducted since 2000 concluded that modest increases in the minimum wage have little or no impact on employment.

The following is a list, by state, of minimum wages paid.

Minimum Wage Variations in Each State

	Hourly Minimum Wage								
	Federal	No state required	Same as Federal	State Minimum Wage		Future State Increases			
				Higher	Lower	2015	2016	2017	2018
Alabama	\$7.25	yes							
Alaska	\$7.25			\$7.75		\$8.75	\$9.75		
Arizona	\$7.25			\$7.90		\$8.05			
Arkansas	\$7.25				\$6.25	\$7.50	\$8.00	\$8.50	
California	\$7.25			\$9.00		\$10.00			
Colorado	\$7.25			\$8.00		\$8.23			
Connecticut	\$7.25			\$8.70		\$9.15	\$9.60	\$10.10	
Delaware	\$7.25			\$7.75		\$8.25			
D.C.	\$7.25			\$9.50		\$10.50	\$11.50		
Florida	\$7.25			\$7.93		\$8.05			
Georgia	\$7.25				\$5.15				
Hawaii	\$7.25		yes			\$7.75	\$8.50	\$9.25	\$10.10
Idaho	\$7.25		yes						
Illinois	\$7.25			\$8.25					
Indiana	\$7.25		yes						
Iowa	\$7.25		yes						
Kansas	\$7.25		yes						
Kentucky	\$7.25		yes						
Louisiana	\$7.25	yes							
Maine	\$7.25			\$7.50					
Maryland	\$7.25		yes			\$8.00-\$8.25	\$8.75		
Massachusetts	\$7.25			\$8.00					
Michigan	\$7.25			\$8.15			\$8.50	\$8.90	\$9.25
Minnesota	\$7.25			\$6.50/\$8.00		\$7.25/\$9.00	\$7.75/\$9.50		
Mississippi	\$7.25	yes							
Missouri	\$7.25			\$7.50		\$7.65			
Montana	\$7.25			\$4.00/\$7.90		\$8.05			
Nebraska	\$7.25		yes			\$8.00	\$9.00		
Nevada	\$7.25			\$8.25					
New Hampshire	\$7.25		yes						
New Jersey	\$7.25			\$8.25		\$8.38			
New Mexico	\$7.25			\$7.50					
New York	\$7.25			\$8.00		\$8.75	\$9.00		
North Carolina	\$7.25		yes						
North Dakota	\$7.25		yes						
Ohio	\$7.25			\$7.95		\$8.10			
Oklahoma	\$7.25		yes						
Oregon	\$7.25			\$9.10		\$9.25			
Pennsylvania	\$7.25		yes						
Rhode Island	\$7.25			\$8.00		\$9.00			
South Carolina	\$7.25	yes							
South Dakota	\$7.25		yes			\$8.50			
Tennessee	\$7.25	yes							
Texas	\$7.25		yes						
Utah	\$7.25		yes						
Vermont	\$7.25			\$8.73					
Virginia	\$7.25		yes						
Washington	\$7.25			\$9.32					
West Virginia	\$7.25		yes						
Wisconsin	\$7.25		yes						
Wyoming	\$7.25				\$5.15				

Source: U.S. Department of Labor

TENNESSEE CIVILIAN LABOR FORCE 1984 to present

COUNTY UNEMPLOYMENT RATES

(NUMBERS IN THOUSANDS)

MONTHLY DATA NOT SEASONALLY ADJUSTED

Year and Month	Civilian Labor Force							
	Total	Employed					Unemployed	
		Employment	Nonfarm Employment			Number	Rate (%)	
			Total	**Manu- facturing	**Trade			**Services
1984	2,233.5	2,026.4	1,812.0	497.1	413.3	344.3	207.1	9.3 %
1985	2,255.7	2,070.0	1,867.8	492.4	435.3	360.2	185.7	8.2
1986	2,291.3	2,110.7	1,929.8	490.5	452.1	384.7	180.6	7.9
1987	2,324.1	2,166.5	2,011.6	497.4	477.2	408.9	157.6	6.8
1988	2,333.6	2,197.2	2,092.1	511.9	495.6	440.3	136.4	5.8
1989	2,364.9	2,241.3	2,167.2	524.5	508.4	467.2	123.6	5.2
1990	2,401.1	2,269.0	2,193.2	493.4	379.1	611.0	132.1	5.5
1991	2,425.4	2,266.0	2,183.6	480.3	373.0	626.7	159.4	6.6
1992	2,479.5	2,316.7	2,245.0	492.8	374.1	664.8	162.8	6.6
1993	2,543.3	2,391.6	2,328.5	502.8	382.5	709.8	151.7	6.0
1994	2,645.7	2,511.1	2,423.0	513.8	398.4	751.4	134.6	5.1
1995	2,718.0	2,574.0	2,498.9	518.0	412.6	795.0	144.0	5.3
1996	2,758.4	2,611.0	2,533.3	501.5	420.9	814.3	147.4	5.3
1997	2,788.3	2,640.0	2,584.0	498.0	430.5	849.7	148.3	5.3
1998	2,811.7	2,685.2	2,638.4	498.6	437.1	875.7	126.5	4.5
1999	2,838.7	2,722.1	2,685.3	494.7	443.6	900.8	116.6	4.1
2000	2,871.5	2,756.5	2,728.9	488.1	447.5	930.9	115.0	4.0
2001	2,863.5	2,728.5	2,688.3	454.2	446.6	921.5	135.0	4.7
2002	2,867.1	2,715.0	2,664.4	428.5	438.7	938.0	152.1	5.3
2003	2,896.1	2,731.4	2,667.5	414.1	440.8	950.3	164.8	5.7
2004	2,904.4	2,746.2	2,706.1	411.8	447.5	978.7	158.1	5.4
2005	2,942.3	2,778.5	2,743.1	408.8	454.6	1,005.6	163.8	5.6
2006	3,008.9	2,852.5	2,783.1	400.1	460.6	1,030.4	156.4	5.2
2007	3,021.5	2,874.2	2,797.4	380.0	463.5	1,052.8	147.3	4.9
2008	3,056.1	2,854.5	2,774.8	361.0	457.0	1,058.2	201.6	6.6
2009	3,051.6	2,734.3	2,619.8	309.2	427.8	1,025.3	317.3	10.4
2010	3,082.6	2,778.8	2,615.4	298.9	423.5	1,041.2	303.8	9.9
2011	3,118.8	2,828.3	2,661.4	304.4	427.1	1,076.8	290.4	9.3
2012	3,099.7	2,846.4	2,714.0	313.4	433.3	1,112.2	253.4	8.2
2013	3,070.3	2,818.3	2,749.7	318.8	437.2	1,139.2	252.0	8.2
2014								
January	3,018.3	2,800.8	2,733.4	318.0	437.3	1,131.0	217.5	7.2 %
February	3,016.8	2,795.5	2,752.7	318.4	436.7	1,143.6	221.3	7.3
March	3,031.1	2,818.2	2,776.4	318.7	438.1	1,157.8	212.9	7.0
April	3,004.3	2,828.6	2,802.8	321.1	441.5	1,172.9	175.7	5.8
May	3,046.0	2,852.9	2,817.3	323.3	445.5	1,181.1	193.1	6.3
June	3,071.7	2,845.1	2,791.6	324.5	446.4	1,186.8	226.6	7.4
July	3,069.7	2,831.8	2,784.3	323.5	447.8	1,177.8	237.9	7.7
August	3,010.4	2,787.3	2,806.1	325.3	446.4	1,185.8	223.1	7.4
September	3,000.1	2,801.8	2,831.9	327.2	444.9	1,188.4	198.3	6.6
October (r)	3,020.4	2,829.9	2,845.3	328.9	447.7	1,190.5	190.5	6.3
November (p)	3,011.3	2,818.6	2,860.6	328.8	456.4	1,191.8	192.6	6.4
December								

(r)=revised

(p)=preliminary

Trade = Wholesale and Retail Trade

**These industries not comparable to industry employment data before 1990 because of changes to NAICS coding system.

Services = Professional/Business Services, Educational/Health Services, Leisure/Hospitality, and Other Services.

County	Nov	Nov	County	Nov	Nov
	2013	2014		2013	2014
Anderson	7.3	6.2	Lauderdale	12.5	10.7
Bedford	7.2	5.9	Lawrence	11.0	9.1
Benton	9.7	8.6	Lewis	9.4	8.1
Bledsoe	9.1	7.6	Lincoln	5.2	4.3
Blount	6.1	5.4	Loudon	6.6	5.6
Bradley	6.4	5.8	Macon	6.7	5.3
Campbell	10.1	8.1	Madison	7.8	6.7
Cannon	5.9	5.4	Marion	8.3	6.9
Carroll	11.0	9.6	Marshall	8.7	7.3
Carter	7.7	6.2	Maury	7.6	6.5
Cheatham	5.6	5.6	McMinn	8.3	6.9
Chester	7.2	6.5	McNairy	11.4	8.7
Claiborne	10.7	8.3	Meigs	9.0	7.8
Clay	10.2	8.8	Monroe	9.5	7.4
Coke	9.7	8.1	Montgomery	8.0	6.9
Coffee	6.3	5.7	Moore	6.2	4.8
Crockett	9.5	7.7	Morgan	9.5	8.3
Cumberland	8.5	7.7	Obion	10.9	9.3
Davidson	5.8	5.2	Overton	8.3	6.2
Decatur	9.3	8.5	Perry	10.2	8.9
DeKalb	7.3	6.0	Pickett	12.3	11.8
Dickson	6.0	5.2	Polk	9.0	7.0
Dyer	10.4	8.0	Putnam	6.6	6.1
Fayette	9.7	7.9	Rhea	10.2	8.2
Fentress	8.1	6.8	Roane	7.3	6.2
Franklin	6.7	5.5	Robertson	5.8	5.3
Gibson	11.9	9.5	Rutherford	5.7	4.9
Giles	8.1	6.3	Scott	15.8	12.5
Grainger	9.3	7.4	Sequatchie	8.5	6.8
Greene	9.2	7.9	Sevier	7.2	6.3
Grundy	8.2	7.6	Shelby	9.4	8.1
Hamblen	8.0	6.9	Smith	6.2	5.3
Hamilton	7.2	6.4	Stewart	8.8	7.7
Hancock	11.1	9.7	Sullivan	6.9	6.0
Hardeman	10.8	9.0	Sumner	5.8	5.0
Hardin	9.9	7.7	Tipton	9.0	8.4
Hawkins	6.9	6.5	Trousdale	7.1	5.8
Haywood	11.2	8.8	Unicoi	8.0	7.1
Henderson	10.4	9.0	Union	6.7	6.3
Henry	9.7	8.2	Van Buren	10.6	8.9
Hickman	7.3	6.4	Warren	7.8	6.4
Houston	8.6	7.8	Washington	6.5	5.9
Humphreys	7.8	6.6	Wayne	10.1	9.3
Jackson	9.2	7.2	Weakley	10.6	8.6
Jefferson	8.6	6.9	White	10.0	7.7
Johnson	8.3	7.0	Williamson	5.0	4.6
Knox	5.9	5.1	Wilson	5.5	4.7
Lake	9.7	9.1			

*Data Not Seasonally Adjusted



Statewide

ESTIMATED NONFARM EMPLOYMENT (in thousands)

Industry	Revised		Preliminary November 2014	Net Change	
	November 2013	October 2014		Nov. 2013 Nov. 2014	Oct. 2014 Nov. 2014
Total Nonfarm	2,805.3	2,845.3	2,860.6	55.3	15.3
Total Private	2,376.5	2,419.6	2,432.7	56.2	13.1
Goods Producing	432.9	447.3	448.5	15.6	1.2
Mining, Logging, & Construction	110.6	118.4	119.7	9.1	1.3
Manufacturing	322.3	328.9	328.8	6.5	-0.1
Durable Goods Manufacturing	202.7	211.0	211.1	8.4	0.1
Wood Product Manufacturing	10.8	11.1	11.0	0.2	-0.1
Nonmetallic Mineral Product Manufacturing	12.0	12.3	12.2	0.2	-0.1
Primary Metal Manufacturing	10.0	10.1	10.1	0.1	0.0
Fabricated Metal Product Manufacturing	33.7	35.1	35.1	1.4	0.0
Machinery Manufacturing	26.4	27.2	27.3	0.9	0.1
Computer & Electronic Product Manufacturing	5.2	5.3	5.2	0.0	-0.1
Electrical Equipment & Appliance Manufacturing	18.9	20.1	20.2	1.3	0.1
Transportation Equipment Manufacturing	62.7	66.5	66.7	4.0	0.2
Furniture & Related Product Manufacturing	8.7	8.7	8.7	0.0	0.0
Miscellaneous Manufacturing Durable Goods	14.3	14.6	14.6	0.3	0.0
Nondurable Goods Manufacturing	119.6	117.9	117.7	-1.9	-0.2
Textile Mills, Products, & Apparel	10.4	10.0	9.9	-0.5	-0.1
Food Manufacturing	32.4	32.1	32.1	-0.3	0.0
Beverage & Tobacco Product Manufacturing	5.2	5.0	4.9	-0.3	-0.1
Paper Manufacturing	14.5	14.4	14.3	-0.2	-0.1
Printing & Related Support Activities	9.5	9.1	9.1	-0.4	0.0
Chemical Manufacturing	25.1	24.9	25.0	-0.1	0.1
Plastics & Rubber Products Manufacturing	20.2	20.2	20.3	0.1	0.1
Plastics Product Manufacturing	12.0	12.0	12.0	0.0	0.0
Rubber Product Manufacturing	8.2	8.2	8.3	0.1	0.1
Service Providing	2,372.4	2,398.0	2,412.1	39.7	14.1
Trade, Transportation, & Utilities	596.8	597.6	607.5	10.7	9.9
Wholesale Trade	124.0	127.6	128.2	4.2	0.6
Merchant Wholesalers, Durable Goods	63.0	64.3	65.0	2.0	0.7
Merchant Wholesalers, Nondurable Goods	42.0	43.4	43.1	1.1	-0.3
Wholesale Electronic Markets	19.0	19.9	20.1	1.1	0.2
Retail Trade	325.5	320.1	328.2	2.7	8.1
Motor Vehicle & Parts Dealers	41.3	43.2	43.3	2.0	0.1
Furniture & Home Furnishings Stores	8.9	8.7	8.8	-0.1	0.1
Building Material, Garden Equipment, & Supplies	26.4	26.2	25.8	-0.6	-0.4
Food & Beverage Stores	53.2	53.4	54.5	1.3	1.1
Health & Personal Care Stores	22.9	22.7	23.1	0.2	0.4
Gasoline Stations	20.9	20.6	20.6	-0.3	0.0
Clothing & Clothing Accessories Stores	27.5	25.6	28.0	0.5	2.4
Sporting Goods, Hobby, Book, & Music Stores	12.4	11.5	12.7	0.3	1.2
General Merchandise Stores	74.2	69.1	72.4	-1.8	3.3
Miscellaneous Store Retailers	17.1	17.4	17.5	0.4	0.1
Nonstore Retailers	9.2	9.1	9.5	0.3	0.4
Transportation, Warehousing, & Utilities	147.3	149.9	151.1	3.8	1.2
Utilities	3.3	3.3	3.3	0.0	0.0
Transportation & Warehousing	144.0	146.6	147.8	3.8	1.2
Truck Transportation	57.3	59.3	58.8	1.5	-0.5
Information	44.0	42.8	43.6	-0.4	0.8
Financial Activities	138.3	141.4	141.3	3.0	-0.1
Finance & Insurance	106.0	106.3	106.8	0.8	0.5
Real Estate, Rental, & Leasing	32.3	35.1	34.5	2.2	-0.6
Professional & Business Services	366.9	378.7	382.9	16.0	4.2
Professional, Scientific, & Technical Services	116.4	119.0	120.7	4.3	1.7
Management of Companies & Enterprises	36.6	38.3	38.5	1.9	0.2
Administrative, Support, & Waste Management	213.9	221.4	223.7	9.8	2.3
Educational & Health Services	402.6	404.9	405.0	2.4	0.1
Educational Services	53.1	52.2	52.6	-0.5	0.4
Health Care & Social Assistance	349.5	352.7	352.4	2.9	-0.3
Ambulatory Health Care Services	138.7	143.5	142.3	3.6	-1.2
Hospitals	102.4	101.3	101.4	-1.0	0.1
Nursing & Residential Care Facilities	60.7	61.0	61.2	0.5	0.2
Social Assistance	47.7	46.9	47.5	-0.2	0.6
Leisure & Hospitality	289.9	300.3	298.3	8.4	-2.0
Arts, Entertainment, & Recreation	28.5	30.1	29.0	0.5	-1.1
Accommodation & Food Services	261.4	270.2	269.3	7.9	-0.9
Accommodation	32.6	36.4	34.9	2.3	-1.5
Food Services & Drinking Places	228.8	233.8	234.4	5.6	0.6
Other Services	105.1	106.6	105.6	0.5	-1.0
Government	428.8	425.7	427.9	-0.9	2.2
Federal Government	49.3	48.3	48.3	-1.0	0.0
State Government	97.2	97.4	97.4	0.2	0.0
State Government Educational Services	55.5	54.6	54.9	-0.6	0.3
Local Government	282.3	280.0	282.2	-0.1	2.2
Local Government Educational Services	143.7	140.5	141.4	-2.3	0.9

NONFARM EMPLOYMENT & LABOR FORCE NARRATIVE

Total nonfarm employment increased by 55,300 jobs from November 2013 to November 2014. There were large increases in professional/business services (up 16,000 jobs), which included increases of 9,800 jobs in administrative/support/waste management and 4,300 jobs in professional/scientific/technical services; mining/logging/construction (up 7,900 jobs); and food services/drinking places (up 5,600 jobs). There were smaller increases in wholesale trade (up 4,200 jobs), which includes an increase of 2,000 jobs in durable goods wholesalers; transportation equipment manufacturing (up 4,000 jobs); transportation/warehousing (up 3,800 jobs); financial activities (up 3,000 jobs), which includes an increase of 2,200 jobs in real estate/rental/leasing; health care/social assistance (up 2,900 jobs), which includes an increase of 3,600 jobs in ambulatory health care services combined with a decline of 1,000 jobs in hospitals; retail trade (up 2,700 jobs), which includes increases of 2,000 jobs in motor vehicle/ parts dealers and 1,300 jobs in food/beverage stores combined with a decline of 1,800 jobs in general merchandise stores, and accommodation (up 2,300 jobs).

These increases were partially offset by declines in local government educational services (down 2,300 jobs) and federal government (down 1,000 jobs).

During November 2014, nonfarm employment increased by 15,300 jobs. There were increases in retail trade (up 8,100 jobs), which includes increases of 3,300 jobs in general merchandise stores, 2,400 jobs in clothing/clothing accessories stores, and 1,200 jobs in sporting goods/hobby/book/music stores; professional/business services (up 4,200 jobs), which includes increases of 2,300 jobs in administrative/support/waste management and 1,700 jobs in professional/scientific/technical services; local government (up 2,200 jobs); mining/logging/construction (up 1,300 jobs); and transportation/warehousing (up 1,200 jobs). This was partially offset by declines in accommodation (down 1,500 jobs), ambulatory health care services (down 1,200 jobs), and arts/entertainment/recreation (down 1,100 jobs).

Tennessee's seasonally adjusted estimated unemployment rate for November was 6.8 percent, down 0.3 percentage point from the revised October 2014 rate. The United States unemployment rate in November was 5.8 percent, unchanged from the October 2014 rate.

In November 2013, the national unemployment rate was 7.0 percent while the state rate was 7.9 percent.

Across Tennessee, the unemployment rate increased in 63 counties, decreased in 18 counties, and remained the same in 14 counties. In November 2014, the lowest rate was in Lincoln County at 4.3 percent, down 0.1 percentage point from the previous month, while the highest rate was in Scott County at 12.5 percent, down from 11.8 percent in October.

The data from all the nonfarm employment estimates tables include all full- and part-time nonfarm wage and salary employees who worked during or received pay for any part of the pay period that includes the 12th of the month. This is a count of jobs by place of work. Agricultural workers, proprietors, self-employed persons, workers in private households, and unpaid family workers are excluded. These numbers may not add due to rounding. Data are based on the 2013 benchmark.

CIVILIAN LABOR FORCE

CIVILIAN LABOR FORCE SUMMARY

November 2013

October 2014

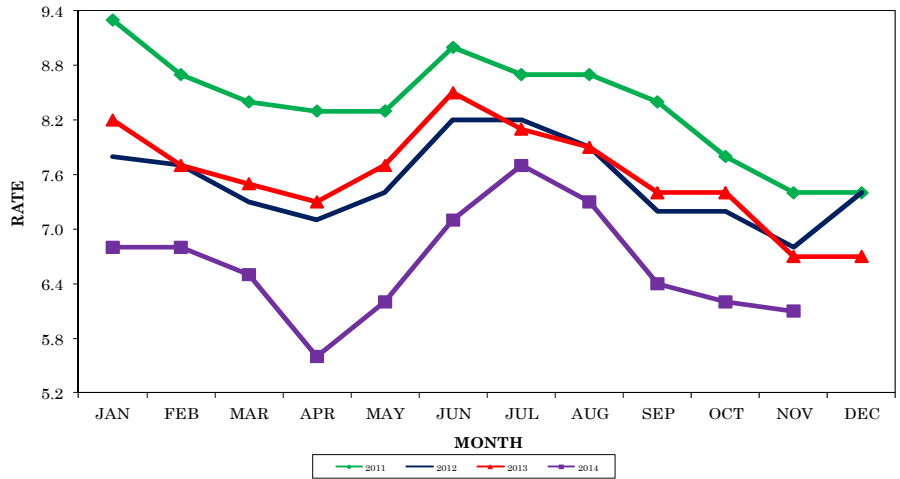
November 2014

	Labor Force	Employment	Unemployed	Rate	Labor Force	Employment	Unemployed	Rate	Labor Force	Employment	Unemployed	Rate
Seasonally Adjusted												
U.S.	155,284,000	144,443,000	10,841,000	7.0	156,278,000	147,283,000	8,995,000	5.8	156,397,000	147,287,000	9,110,000	5.8
TENNESSEE	3,036,500	2,796,600	239,900	7.9	3,001,700	2,789,600	212,000	7.1	2,998,900	2,796,300	202,600	6.8
Not Seasonally Adjusted												
U.S.	155,046,000	144,775,000	10,271,000	6.6	156,616,000	147,936,000	8,680,000	5.5	156,297,000	147,666,000	8,630,000	5.5
TENNESSEE	3,043,600	2,817,500	226,100	7.4	3,020,400	2,829,900	190,500	6.3	3,011,300	2,818,600	192,600	6.4
Metropolitan Statistical Areas												
Chattanooga	254,190	237,100	17,090	6.7	253,400	237,810	15,600	6.2	252,080	236,790	15,290	6.1
Clarksville	115,150	105,750	9,400	8.2	112,430	104,740	7,680	6.8	112,040	104,290	7,750	6.9
Cleveland	57,190	53,320	3,860	6.8	56,580	53,230	3,360	5.9	57,010	53,630	3,390	5.9
Jackson	55,880	51,550	4,330	7.7	55,100	51,530	3,570	6.5	55,110	51,450	3,660	6.6
Johnson City	95,380	88,780	6,610	6.9	93,300	87,650	5,640	6.0	93,370	87,690	5,680	6.1
Kingsport	143,030	133,480	9,540	6.7	141,380	132,920	8,460	6.0	140,820	132,510	8,310	5.9
Knoxville	354,900	333,150	21,750	6.1	358,000	339,060	18,930	5.3	356,850	337,860	18,990	5.3
Memphis	598,670	546,570	52,100	8.7	586,260	542,340	43,920	7.5	584,360	540,200	44,160	7.6
Morristown	61,190	56,040	5,150	8.4	60,040	55,930	4,110	6.8	59,890	55,720	4,180	7.0
Nashville	845,170	797,090	48,080	5.7	853,040	809,970	43,070	5.0	850,590	807,600	42,990	5.1
Micropolitan Statistical Areas												
Athens	23,550	21,600	1,950	8.3	23,110	21,510	1,610	7.0	23,200	21,600	1,600	6.9
Brownsville	8,540	7,580	960	11.2	8,180	7,490	700	8.5	8,140	7,420	720	8.8
Columbia	37,270	34,440	2,820	7.6	36,530	34,150	2,380	6.5	36,440	34,060	2,380	6.5
Cookeville	50,200	46,580	3,610	7.2	50,120	47,040	3,080	6.2	50,280	47,150	3,120	6.2
Crossville	23,700	21,680	2,010	8.5	23,010	21,290	1,720	7.5	22,790	21,040	1,750	7.7
Dyersburg	16,700	14,960	1,740	10.4	16,220	14,970	1,260	7.7	16,210	14,910	1,300	8.0
Greeneville	29,020	26,350	2,670	9.2	28,470	26,190	2,280	8.0	28,210	25,970	2,240	7.9
Harriman	26,100	24,190	1,910	7.3	25,820	24,250	1,570	6.1	25,690	24,090	1,610	6.2
Humboldt	19,750	17,400	2,350	11.9	19,020	17,240	1,780	9.3	18,960	17,150	1,810	9.5
LaFollette	16,380	14,720	1,660	10.1	16,150	14,860	1,290	8.0	16,040	14,750	1,290	8.1
Lawrenceburg	15,900	14,150	1,750	11.0	15,340	13,990	1,350	8.8	15,350	13,960	1,390	9.1
Lewisburg	12,340	11,270	1,070	8.7	12,130	11,260	870	7.2	12,080	11,190	890	7.3
Martin	15,070	13,480	1,590	10.6	14,390	13,160	1,220	8.5	14,300	13,070	1,230	8.6
McMinnville	17,890	16,500	1,400	7.8	16,750	15,590	1,160	6.9	16,780	15,700	1,080	6.4
Newport	15,620	14,100	1,520	9.7	14,880	13,680	1,200	8.0	14,750	13,560	1,190	8.1
Paris	13,480	12,170	1,310	9.7	13,210	12,160	1,050	7.9	13,150	12,070	1,080	8.2
Sevierville	48,970	45,420	3,550	7.2	47,820	45,020	2,800	5.8	47,370	44,380	2,990	6.3
Shelbyville	22,390	20,780	1,620	7.2	22,290	20,980	1,310	5.9	22,250	20,930	1,320	5.9
Tullahoma	49,520	46,330	3,190	6.4	49,070	46,390	2,680	5.5	48,980	46,240	2,730	5.6
Union City	15,550	13,830	1,710	11.0	15,050	13,700	1,350	9.0	14,990	13,610	1,380	9.2
Cities												
Bartlett	28,340	26,350	1,990	7.0	27,890	26,270	1,620	5.8	27,750	26,090	1,660	6.0
Brentwood	18,780	17,870	910	4.9	18,990	18,160	830	4.4	18,980	18,110	880	4.6
Bristol	12,680	11,760	920	7.3	12,370	11,650	720	5.8	12,360	11,620	730	5.9
Chattanooga	75,810	69,730	6,090	8.0	75,440	70,210	5,230	6.9	75,120	69,760	5,350	7.1
Clarksville	57,520	52,810	4,710	8.2	56,600	52,540	4,060	7.2	56,250	52,270	3,980	7.1
Cleveland	20,180	18,760	1,410	7.0	20,010	18,730	1,280	6.4	20,170	18,870	1,300	6.5
Collierville	22,020	20,670	1,350	6.1	21,810	20,600	1,210	5.5	21,660	20,460	1,190	5.5
Columbia	15,300	14,040	1,260	8.2	15,010	13,920	1,090	7.3	14,980	13,890	1,090	7.3
Cookeville	15,100	14,160	940	6.2	15,170	14,290	880	5.8	15,210	14,330	880	5.8
Franklin	35,490	33,580	1,910	5.4	35,750	34,130	1,630	4.6	35,680	34,030	1,650	4.6
Gallatin	14,340	13,370	970	6.8	14,370	13,580	790	5.5	14,320	13,540	780	5.4
Germantown	19,090	17,940	1,150	6.0	18,830	17,880	950	5.0	18,700	17,760	940	5.0
Hendersonville	28,350	26,800	1,550	5.5	28,600	27,230	1,370	4.8	28,560	27,150	1,410	4.9
Jackson	31,220	28,610	2,610	8.4	30,740	28,600	2,140	7.0	30,800	28,560	2,240	7.3
Johnson City	31,250	29,200	2,050	6.6	30,670	28,830	1,850	6.0	30,710	28,840	1,880	6.1
Kingsport	21,160	19,690	1,470	7.0	20,860	19,500	1,350	6.5	20,790	19,460	1,330	6.4
Knoxville	88,530	82,340	6,190	7.0	89,050	83,800	5,250	5.9	88,770	83,500	5,270	5.9
LaVergne	19,010	17,930	1,080	5.7	19,150	18,220	920	4.8	19,170	18,170	1,000	5.2
Lebanon	13,550	12,700	850	6.3	13,650	12,900	750	5.5	13,560	12,870	690	5.1
Maryville	12,850	11,970	890	6.9	12,930	12,180	750	5.8	12,890	12,140	760	5.9
Memphis	282,570	252,920	29,640	10.5	276,200	252,120	24,080	8.7	275,270	250,430	24,840	9.0
Morristown	12,510	11,480	1,030	8.3	12,380	11,450	920	7.5	12,360	11,410	950	7.7
Murfreesboro	60,090	56,500	3,590	6.0	60,460	57,410	3,040	5.0	60,320	57,250	3,070	5.1
Nashville	333,880	314,610	19,280	5.8	337,030	319,690	17,350	5.1	336,230	318,750	17,480	5.2
Oak Ridge	13,660	12,740	930	6.8	13,760	12,940	820	6.0	13,710	12,890	820	6.0
Smyrna	22,630	21,290	1,340	5.9	22,750	21,640	1,110	4.9	22,650	21,580	1,080	4.8
Spring Hill	16,130	15,260	870	5.4	16,190	15,420	760	4.7	16,130	15,380	750	4.6

Total nonfarm employment increased by 900 jobs from October 2014 to November 2014. There were seasonal increases in retail trade (up 700 jobs); and educational/health services and transportation/warehousing/utilities (both up 200 jobs). This was partially offset by a decline of 300 jobs in leisure/hospitality.

During the past 12 months, nonfarm employment increased by 3,500 jobs. During the year, goods-producing jobs increased by 1,000 while service-providing industries jobs increased by 2,500.

**CHATTANOOGA MSA
UNEMPLOYMENT RATES**
(NOT SEASONALLY ADJUSTED)



ESTIMATED NONFARM EMPLOYMENT (in thousands)

Industry	November 2013	Revised October 2014	Preliminary November 2014	Net Change	
				Nov. 2013 Nov. 2014	Oct. 2014 Nov. 2014
Total Nonfarm	241.0	243.6	244.5	3.5	0.9
Total Private	203.9	206.9	207.8	3.9	0.9
Goods Producing	39.0	40.1	40.0	1.0	-0.1
Mining, Logging, & Construction	9.0	9.5	9.4	0.4	-0.1
Manufacturing	30.0	30.6	30.6	0.6	0.0
Durable Goods Manufacturing	15.8	16.6	16.7	0.9	0.1
Nondurable Goods Manufacturing	14.2	14.0	13.9	-0.3	-0.1
Service Providing	202.0	203.5	204.5	2.5	1.0
Trade, Transportation, & Utilities	52.5	52.6	53.5	1.0	0.9
Wholesale Trade	8.8	9.1	9.1	0.3	0.0
Retail Trade	26.0	25.3	26.0	0.0	0.7
Transportation, Warehousing, & Utilities	17.7	18.2	18.4	0.7	0.2
Information	2.8	2.8	2.9	0.1	0.1
Financial Activities	13.8	13.6	13.7	-0.1	0.1
Professional & Business Services	27.9	27.7	27.7	-0.2	0.0
Educational & Health Services	33.1	32.6	32.8	-0.3	0.2
Leisure & Hospitality	25.0	27.7	27.4	2.4	-0.3
Other Services	9.8	9.8	9.8	0.0	0.0
Government	37.1	36.7	36.7	-0.4	0.0
Federal Government	6.2	6.2	6.2	0.0	0.0
State Government	7.1	7.2	7.2	0.1	0.0
Local Government	23.8	23.3	23.3	-0.5	0.0

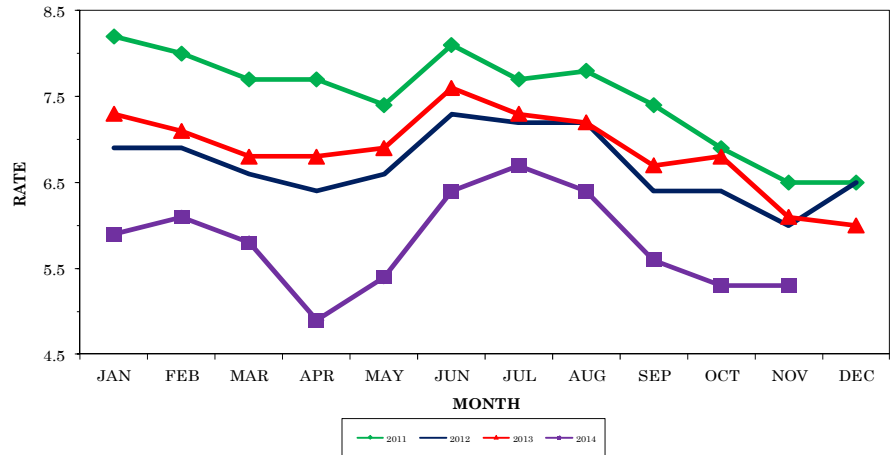


Knoxville MSA -Anderson, Blount, Knox, Loudon, Union

Total nonfarm employment increased by 1,700 jobs from October 2014 to November 2014. All the employment increases were in the service-providing industries. There were increases in retail trade (up 1,200 jobs) and local government (up 400 jobs). This was partially offset by a seasonal decline in professional/business services (down 200 jobs).

Over the past 12 months, nonfarm employment increased by 9,500 jobs. During that time, goods-producing jobs increased by 2,800 jobs, while service-providing jobs increased by 6,700.

**KNOXVILLE MSA
UNEMPLOYMENT RATES
(NOT SEASONALLY ADJUSTED)**



ESTIMATED NONFARM EMPLOYMENT (in thousands)

Industry	November 2013	Revised	Preliminary	Net Change	
		October 2014	November 2014	Nov. 2013 Nov. 2014	Oct. 2014 Nov. 2014
Total Nonfarm	338.4	346.2	347.9	9.5	1.7
Total Private	288.0	295.8	297.2	9.2	1.4
Goods Producing	46.6	49.3	49.4	2.8	0.1
Mining, Logging, & Construction	15.2	16.7	16.8	1.6	0.1
Manufacturing	31.4	32.6	32.6	1.2	0.0
Durable Goods Manufacturing	23.0	24.1	24.1	1.1	0.0
Nondurable Goods Manufacturing	8.4	8.5	8.5	0.1	0.0
Service Providing	291.8	296.9	298.5	6.7	1.6
Trade, Transportation, & Utilities	71.1	71.0	72.3	1.2	1.3
Wholesale Trade	16.2	15.8	15.9	-0.3	0.1
Retail Trade	42.5	42.6	43.8	1.3	1.2
Transportation, Warehousing, & Utilities	12.4	12.6	12.6	0.2	0.0
Information	5.6	5.5	5.5	-0.1	0.0
Financial Activities	17.3	17.6	17.6	0.3	0.0
Professional & Business Services	50.3	53.8	53.6	3.3	-0.2
Educational & Health Services	46.6	46.6	46.7	0.1	0.1
Leisure & Hospitality	37.2	38.6	38.7	1.5	0.1
Other Services	13.3	13.4	13.4	0.1	0.0
Government	50.4	50.4	50.7	0.3	0.3
Federal Government	4.8	4.9	4.8	0.0	-0.1
State Government	15.7	15.6	15.6	-0.1	0.0
Local Government	29.9	29.9	30.3	0.4	0.4

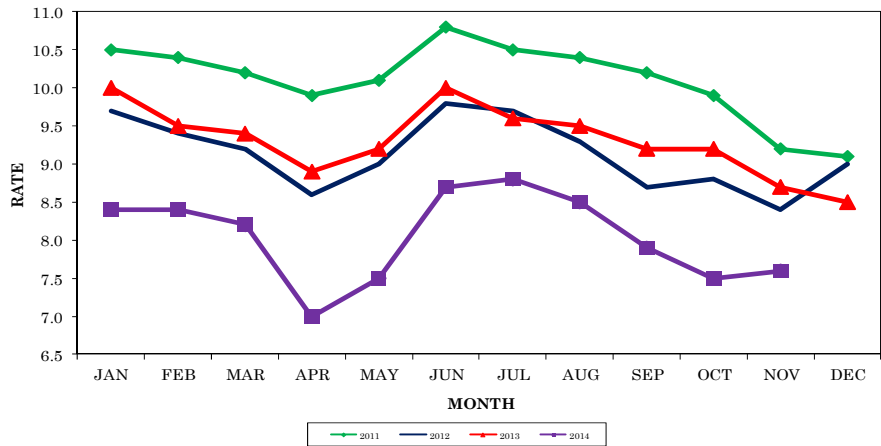


Total nonfarm employment increased by 1,400 jobs from October 2014 to November 2014. There were increases in retail trade (up 1,800 jobs); professional/business services (up 600 jobs), which includes an increase of 500 jobs in professional/scientific/technical services; and transportation/warehousing/utilities, local government, and state government (each up 200 jobs).

This was partially offset by a seasonal decreases in leisure/hospitality (down 600 jobs); wholesale trade, educational/health services, and other services (each down 300 jobs); and durable goods manufacturing (down 200 jobs).

During the past 12 months, nonfarm employment increased by 2,200 jobs. During that time, goods-producing jobs increased by 1,900, while service-providing jobs increased by 300.

**MEMPHIS MSA
UNEMPLOYMENT RATES
(NOT SEASONALLY ADJUSTED)**



ESTIMATED NONFARM EMPLOYMENT (in thousands)

Industry	November	Revised	Preliminary	Net Change	
	2013	October 2014	November 2014	Nov. 2013 Nov. 2014	Oct. 2014 Nov. 2014
Total Nonfarm	613.8	614.6	616.0	2.2	1.4
Total Private	528.8	531.7	532.6	3.8	0.9
Goods Producing	64.8	66.9	66.7	1.9	-0.2
Mining, Logging, & Construction	20.3	21.6	21.6	1.3	0.0
Manufacturing	44.5	45.3	45.1	0.6	-0.2
Durable Goods Manufacturing	23.5	24.5	24.3	0.8	-0.2
Nondurable Goods Manufacturing	21.0	20.8	20.8	-0.2	0.0
Service Providing	549.0	547.7	549.3	0.3	1.6
Trade, Transportation, & Utilities	165.5	163.8	165.5	0.0	1.7
Wholesale Trade	34.3	34.0	33.7	-0.6	-0.3
Retail Trade	67.7	64.8	66.6	-1.1	1.8
Transportation, Warehousing, & Utilities	63.5	65.0	65.2	1.7	0.2
Information	6.0	5.8	5.9	-0.1	0.1
Financial Activities	27.9	29.7	29.6	1.7	-0.1
Professional & Business Services	89.9	88.6	89.2	-0.7	0.6
Professional, Scientific, & Technical Services	20.2	20.0	20.5	0.3	0.5
Management of Companies & Enterprises	6.7	6.9	6.9	0.2	0.0
Administrative, Support, & Waste Management	63.0	61.7	61.8	-1.2	0.1
Educational & Health Services	87.0	87.2	86.9	-0.1	-0.3
Leisure & Hospitality	63.6	65.2	64.6	1.0	-0.6
Other Services	24.1	24.5	24.2	0.1	-0.3
Government	85.0	82.9	83.4	-1.6	0.5
Federal Government	14.3	13.8	13.9	-0.4	0.1
State Government	14.3	14.1	14.3	0.0	0.2
Local Government	56.4	55.0	55.2	-1.2	0.2



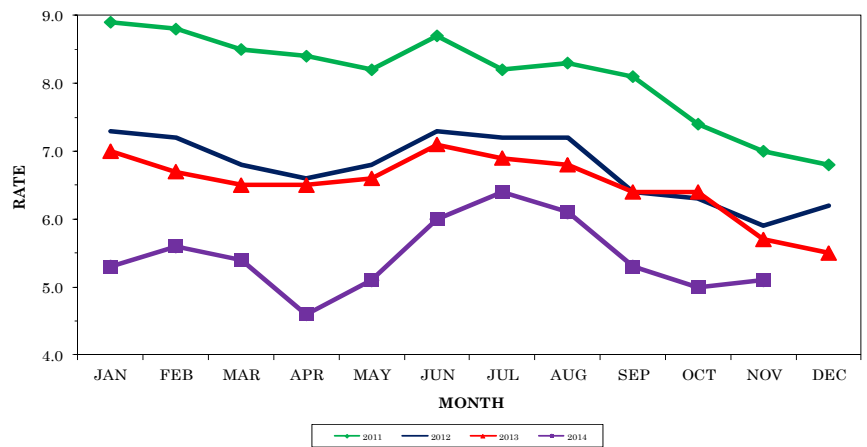
Nashville MSA — Cannon, Cheatham, Davidson, Dickson, Hickman, Macon, Robertson, Rutherford, Smith, Sumner, Trousdale, Williamson, Wilson

Total nonfarm employment increased by 4,800 jobs from October 2014 to November 2014. There were seasonal increases in retail trade (up 2,600 jobs); local government (up 900 jobs); mining/logging/construction (up 800 jobs); professional/business services (up 600 jobs), which includes increases of 700 jobs in professional/scientific/technical services, 300 jobs in management of companies/enterprises, combined with a decline of 400 jobs in administrative/support/waste management; transportation/warehousing/utilities (up 500 jobs); information (up 300 jobs); and educational services (up 200 jobs).

These were partially offset by declines in leisure/hospitality and financial activities (both down 400 jobs); wholesale trade (down 300 jobs); and health care/social assistance (down 200 jobs).

During the past 12 months, nonfarm employment increased by 22,000 jobs. During that time, goods-producing jobs increased by 6,500, while service-providing jobs increased by 15,500.

NASHVILLE MSA UNEMPLOYMENT RATES (NOT SEASONALLY ADJUSTED)



ESTIMATED NONFARM EMPLOYMENT (in thousands)

Industry	November	Revised	Preliminary	Net Change	
	2013	October 2014	November 2014	Nov. 2013 Nov. 2014	Oct. 2014 Nov. 2014
Total Nonfarm	828.8	846.0	850.8	22.0	4.8
Total Private	722.8	740.1	743.9	21.1	3.8
Goods Producing	106.1	111.8	112.6	6.5	0.8
Mining, Logging, & Construction	33.8	37.4	38.2	4.4	0.8
Manufacturing	72.3	74.4	74.4	2.1	0.0
Durable Goods Manufacturing	50.3	52.4	52.4	2.1	0.0
Nondurable Goods Manufacturing	22.0	22.0	22.0	0.0	0.0
Service Providing	722.7	734.2	738.2	15.5	4.0
Trade, Transportation, & Utilities	164.1	166.4	169.2	5.1	2.8
Wholesale Trade	40.3	42.4	42.1	1.8	-0.3
Retail Trade	88.4	88.4	91.0	2.6	2.6
Transportation, Warehousing, & Utilities	35.4	35.6	36.1	0.7	0.5
Information	20.3	20.2	20.5	0.2	0.3
Financial Activities	51.0	52.2	51.8	0.8	-0.4
Professional & Business Services	129.2	136.4	137.0	7.8	0.6
Professional, Scientific, & Technical Services	47.5	51.4	52.1	4.6	0.7
Management of Companies & Enterprises	14.9	16.0	16.3	1.4	0.3
Administrative, Support, & Waste Management	66.8	69.0	68.6	1.8	-0.4
Educational & Health Services	129.4	131.4	131.4	2.0	0.0
Educational Services	23.7	23.9	24.1	0.4	0.2
Health Care & Social Assistance	105.7	107.5	107.3	1.6	-0.2
Leisure & Hospitality	89.7	88.6	88.2	-1.5	-0.4
Other Services	33.0	33.1	33.2	0.2	0.1
Government	106.0	105.9	106.9	0.9	1.0
Federal Government	12.2	11.8	11.8	-0.4	0.0
State Government	28.6	28.9	29.0	0.4	0.1
Local Government	65.2	65.2	66.1	0.9	0.9

Nonfarm Employment (Smaller MSAs)

	Clarksville, TN-KY MSA		Cleveland, TN MSA		Jackson, TN MSA	
	Oct. 2014 Revised	Nov. 2014 Prelim.	Oct. 2014 Revised	Nov. 2014 Prelim.	Oct. 2014 Revised	Nov. 2014 Prelim.
Total Nonfarm	89,100	89,700	45,500	46,400	62,500	63,200
Total Private	68,000	68,400	39,800	40,600	50,000	50,700
Goods Producing	13,600	13,500	10,500	10,400	11,000	11,000
Mining, Logging, & Construction	3,700	3,700	1,900	1,800	2,600	2,600
Manufacturing	9,900	9,800	8,600	8,600	8,400	8,400
Service Providing	75,500	76,200	35,000	36,000	51,500	52,200
Trade, Transportation, & Utilities	16,200	16,400	8,700	8,900	12,500	13,100
Wholesale Trade	N.A.	N.A.	800	800	3,100	3,100
Retail Trade	11,400	11,800	5,200	5,300	7,600	8,100
Transportation, Warehousing, & Utilities	2,300	2,300	2,700	2,800	1,800	1,900
Information	1,000	1,100	300	300	500	500
Financial Activities	3,000	3,000	1,300	1,300	1,800	1,800
Professional & Business Services	8,700	8,700	5,700	6,600	6,100	6,300
Educational & Health Services	11,600	11,600	6,200	6,200	9,700	9,700
Leisure & Hospitality	11,000	11,200	4,600	4,400	6,100	6,000
Other Services	2,900	2,900	2,500	2,500	2,300	2,300
Government	21,100	21,300	5,700	5,800	12,500	12,500
Federal Government	6,200	6,300	300	300	400	400
State Government	4,600	4,600	800	800	1,800	1,800
Local Government	10,300	10,400	4,600	4,700	10,300	10,300

	Johnson City, TN MSA		Kingsport-Bristol, TN-VA MSA		Morristown, TN MSA	
	Oct. 2014 Revised	Nov. 2014 Prelim.	Oct. 2014 Revised	Nov. 2014 Prelim.	Oct. 2014 Revised	Nov. 2014 Prelim.
Total Nonfarm	78,400	79,300	120,500	121,300	47,200	47,300
Total Private	62,100	62,900	103,900	104,500	39,300	39,400
Goods Producing	10,000	10,100	28,900	28,800	12,800	12,700
Mining, Logging, & Construction	2,800	2,800	7,600	7,500	2,200	2,100
Manufacturing	7,200	7,300	21,300	21,300	10,600	10,600
Service Providing	68,400	69,200	91,600	92,500	34,400	34,600
Trade, Transportation, & Utilities	13,300	13,800	24,500	25,000	10,300	10,600
Wholesale Trade	2,200	2,200	5,100	5,100	2,100	2,100
Retail Trade	10,100	10,600	14,600	15,000	5,800	6,000
Transportation, Warehousing, & Utilities	1,000	1,000	4,800	4,900	2,400	2,500
Information	1,200	1,200	2,000	2,100	300	300
Financial Activities	3,700	3,700	3,800	3,800	1,200	1,200
Professional & Business Services	8,600	8,700	9,600	9,700	4,000	3,900
Educational & Health Services	13,500	13,500	18,700	18,800	5,400	5,400
Leisure & Hospitality	9,300	9,400	11,900	11,900	4,100	4,100
Other Services	2,500	2,500	4,500	4,400	1,200	1,200
Government	16,300	16,400	16,600	16,800	7,900	7,900
Federal Government	2,700	2,700	900	900	300	300
State Government	5,500	5,500	2,500	2,500	1,700	1,600
Local Government	8,100	8,200	13,200	13,400	5,900	6,000

Clarksville MSA is Montgomery County, Stewart County, Christian County, KY, & Trigg County, KY. **Cleveland MSA** is Bradley & Polk counties. **Jackson MSA** is Chester & Madison counties. **Johnson City MSA** is Carter, Unicoi, & Washington counties. **Kingsport-Bristol MSA** is Hawkins County, Sullivan County, Scott County, VA, Washington County, VA, & Bristol City, VA. **Morristown MSA** is Grainger, Hamblen, & Jefferson counties.

U.S. Consumer Price Index — November 2014

Group	All Urban Consumers			Wage & Clerical Earners		
	Index	Percent Change		Index	Percent Change	
		Yearly	Monthly		Yearly	Monthly
U.S. City Average						
All Items (1982-84=100)	236.151	1.3	-0.5	231.551	1.1	-0.7
Food and beverages	244.902	3.1	0.1	244.476	3.2	0.0
Housing	234.315	2.6	-0.1	230.944	2.6	0.0
Apparel	129.023	-0.3	-2.2	128.301	-0.4	-2.2
Transportation	206.874	-2.8	-2.7	206.009	-3.2	-3.2
Medical care	438.445	2.5	0.3	441.306	2.4	0.3
South						
All Items (1982-84=100)	229.845	1.3	-0.6	226.959	1.1	-0.8
Food and beverages	243.889	3.0	0.2	243.256	3.1	0.2
Housing	217.990	2.8	-0.1	218.087	2.9	-0.1
Apparel	138.597	-0.2	-1.8	138.324	-0.4	-1.5
Transportation	206.773	-3.2	-2.8	204.948	-3.8	-3.4
Medical care	416.704	2.2	0.3	422.715	2.2	0.2

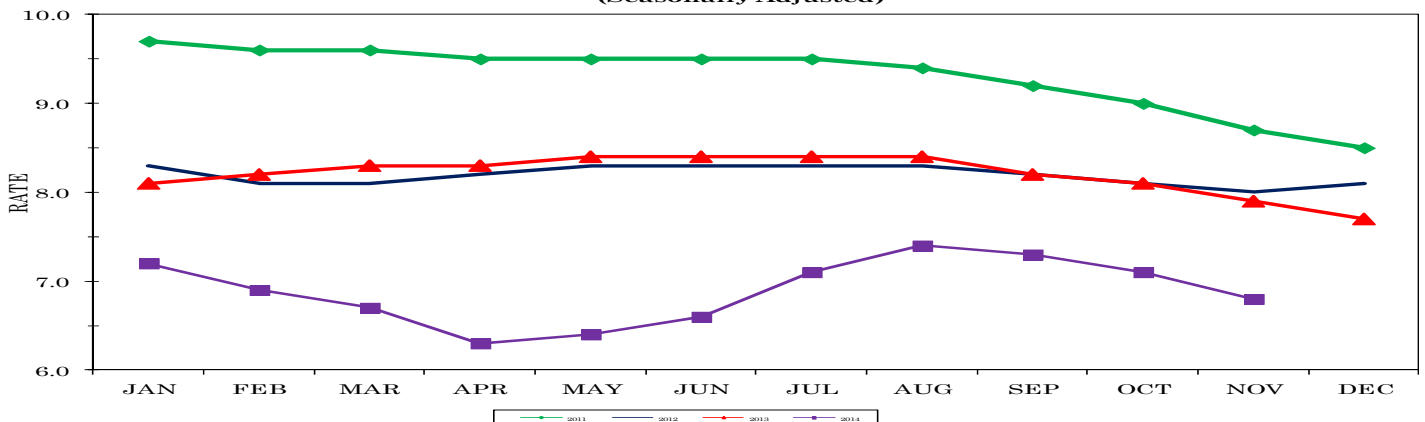
HOURS AND EARNINGS OF PRODUCTION WORKERS

	AVERAGE WEEKLY EARNINGS			AVG. HOURLY EARNINGS			AVERAGE WEEKLY HOURS		
	Nov.	Oct.	Nov.	Nov.	Oct.	Nov.	Nov.	Oct.	Nov.
	2013	2014	2014	2013	2014	2014	2013	2014	2014
Manufacturing	\$731.70	\$709.51	\$737.23	\$17.89	\$17.39	\$17.47	40.9	40.8	42.2
Durable Goods Manufacturing	\$777.19	\$730.76	\$755.48	\$18.33	\$17.78	\$17.86	42.4	41.1	42.3
Non-Durable Goods Manufacturing	\$651.69	\$670.13	\$706.02	\$17.06	\$16.67	\$16.77	38.2	40.2	42.1

ALL EMPLOYEE HOURS AND EARNINGS

	AVERAGE WEEKLY EARNINGS			AVG. HOURLY EARNINGS			AVERAGE WEEKLY HOURS		
	Nov.	Oct.	Nov.	Nov.	Oct.	Nov.	Nov.	Oct.	Nov.
	2013	2014	2014	2013	2014	2014	2013	2014	2014
Total Private	\$722.59	\$720.34	\$736.98	\$20.47	\$20.64	\$20.76	35.3	34.9	35.5
Goods Producing	\$870.97	\$848.72	\$885.25	\$21.14	\$21.06	\$21.28	41.2	40.3	41.6
Mining, Logging and Construction	\$882.23	\$851.24	\$893.22	\$21.31	\$21.66	\$21.68	41.4	39.3	41.2
Manufacturing	\$866.39	\$848.60	\$883.23	\$21.08	\$20.85	\$21.13	41.1	40.7	41.8
Private Service Providing	\$689.86	\$691.86	\$703.14	\$20.29	\$20.53	\$20.62	34.0	33.7	34.1
Trade, Transportation, and Utilities	\$649.70	\$653.78	\$654.24	\$18.51	\$18.95	\$18.80	35.1	34.5	34.8
Information	\$934.40	\$964.23	\$992.26	\$25.60	\$25.99	\$26.32	36.5	37.1	37.7
Financial Activities	\$875.42	\$920.24	\$969.15	\$23.66	\$24.09	\$24.85	37.0	38.2	39.0
Professional and Business Services	\$931.84	\$895.84	\$921.91	\$25.60	\$25.45	\$25.68	36.4	35.2	35.9
Education and Health Services	\$724.85	\$735.30	\$747.25	\$21.01	\$21.50	\$21.35	34.5	34.2	35.0
Leisure and Hospitality	\$308.29	\$315.44	\$315.17	\$11.59	\$11.64	\$11.63	26.6	27.1	27.1
Other Services	\$645.83	\$647.08	\$661.19	\$19.63	\$19.91	\$20.22	32.9	32.5	32.7

TENNESSEE UNEMPLOYMENT RATES (Seasonally Adjusted)





The Tennessee Department of Labor and Workforce Development is committed to principles of equal opportunity, equal access, and affirmative action. Auxiliary aids and services are available upon request to individuals with disabilities.
Tennessee Department of Labor and Workforce Development; Authorization 337607; This public document was promulgated for electronic use only.