

The Labor Market Report

The Tennessee Department of Labor and Workforce Development

Phil Bredesen,
Governor

James G. Neeley,
Commissioner

September 2007 Data

Special Points of Interest:

- Interesting Facts About Thanksgiving Provided by the Bureau of the Census
- Tennessee Historical Civilian Labor Force Series, 1977 to Present
- County Unemployment Rates
- Civilian Labor Force Summary
- State Unemployment Insurance Activities

Inside This Issue:

| | |
|----------------------|----|
| Chattanooga MSA | 7 |
| Knoxville MSA | 8 |
| Memphis MSA | 9 |
| Nashville MSA | 10 |
| Smaller MSAs | 11 |
| Consumer Price Index | 12 |

Fascinating Facts About Thanksgiving

Editors Note: This article was taken from a Census Bureau press release on interesting facts about Thanksgiving. The entire release and links to expanded data are available at www.census.gov. The data collected comes from a variety of sources and may be subject to sampling variability and other sources of error.

In the fall of 1621, the religious separatist Pilgrims held a three-day feast to celebrate a bountiful harvest, an event many regard as the nation's first Thanksgiving. It eventually became a national holiday in 1863 when President Abraham Lincoln proclaimed the last Thursday of November as a national day of thanksgiving. Later, President Franklin Roosevelt clarified that Thanksgiving should never be celebrated on the occasional fifth Thursday but should always fall

on the fourth Thursday of the month to encourage earlier holiday shopping.

Culinary Delights

The preliminary estimate has 272 million **turkeys** raised in the United States in 2007. That's up 4 percent from 2006. The turkeys produced in 2005 weighed 7.2 billion pounds and were valued at \$3.2 billion.

Minnesota expects to raise 46 million turkeys in 2007. The Gopher State is tops in turkey production. It is followed by North Carolina (39 million), Arkansas (31 million), Virginia (21.5 million), Missouri (21 million), and California (16.8 million). These six states together will probably account for about two-thirds of U.S. turkeys produced in 2007.

The forecast for U.S. **cranberry** production is 690 million pounds in 2007, essentially un-

changed from 2006 and 11 percent more than 2005. Wisconsin is expected to lead all states in the production of cranberries, with 390 million pounds, followed by Massachusetts (180 million). New Jersey, Oregon, and Washington are also expected to have substantial production, ranging from 18 million to 52 million pounds.

There were 1.6 billion pounds of **sweet potatoes** — another popular Thanksgiving side dish — grown by major sweet potato-producing states in 2006. North Carolina (702 million pounds) produced more sweet potatoes than any other state. It was followed by California (381 million pounds). Mississippi and Louisiana also produced large amounts: at least 200 million pounds each.

There were 1 billion pounds of **pumpkins** harvested by the major pumpkin-producing (Continued on next page)

Who Grows the Food On Your Table ?

(Continued from previous page) states in 2006. Illinois led the country by producing 492 million pounds of the vined orange gourd. Patches in California, Ohio, and Pennsylvania also provided plenty of pumpkins: Each state produced at least 100 million pounds. The value of all the pumpkins grown by major pumpkin-producing states was \$101 million.

If you prefer **cherry pie**, you will be pleased to learn that the nation's forecasted tart cherry production for 2007 totals 294 million pounds. Of this total, the overwhelming majority (230 million) will be produced in Michigan.

There were 1.8 billion bushels of **wheat** — the essential ingredient of bread, rolls, and pie crust — produced in the United States in 2006. Kansas and North Dakota accounted for 30 percent of the nation's wheat production.

In 2007, there is a contracted production of **snap (green) beans** in major snap (green) bean-producing states totaling 841,280 tons. Of this total, Wisconsin led all states (310,200 tons). Many Americans consider green bean casserole a traditional Thanksgiving dish.

The U.S. imported live turkeys, with a value of \$9.5 million, during the first half of 2007. Of those gobblers imported, 99.5 percent came from Canada. Our northern neighbor accounted for all of the cranberries the United States imported (\$2.2 million).

When it comes to sweet potatoes, however, the Dominican Republic was the source of 63 percent (\$1.7 million) of total imports (\$2.7 million). The United States ran a \$4.9 million trade deficit in live turkeys during the period but had surpluses of \$9.4 million in cranberries and \$15.3 million in sweet potatoes.

In 2005, a typical American consumed an average of 13.1 pounds of turkey, with a hearty helping devoured at Thanksgiving time. The per capita sweet potato consumption was 4.5 pounds.

An Organic Feast

There were 144,086 certified organic turkeys purchased from the nation's farmlands as of 2005. Most of these turkeys were in Michigan (56,729) or Pennsylvania (48,815).

The Turkey Industry

The value of turkeys shipped was \$3.6 billion in 2002. Arkansas led the way in turkey shipments, with \$581.5 million, followed by Virginia (\$544.2 million) and North Carolina (\$453 million). In 2002, poultry businesses whose primary product was turkey totaled 35 establishments employing about 17,000 people.

The forecast for 2007 is for \$3.86 billion in receipts to farmers from turkey sales. This exceeds the total receipts from sales of products such as rice, peanuts, and tobacco.

The average cost per pound of a frozen whole turkey was 99 cents in December 2006.

Where to Feast

There are three places in the United States named after the holiday's traditional main course. Turkey, Texas, was the most populous in 2006, with 489 residents; followed by Turkey Creek, La. (363); and Turkey, N.C. (270). There also are nine townships around the country named Turkey, with three in Kansas.

There are eight places and townships in the United States that are named Cranberry or some spelling variation of the red, acidic berry (e.g., Cranbury, N.J.), a popular side dish at Thanksgiving. Cranberry township (Butler County), Pa., was the most populous of these places in 2006, with 27,509 residents. Cranberry township (Venango County), Pa., was next (6,900).

There are 28 places in the United States named Plymouth, as in Plymouth Rock, the landing site of the first Pilgrims. Plymouth, Minn., is the most populous, with 70,102 residents in 2006; Plymouth, Mass., had 55,516. Speaking of Plymouth Rock, there is just one township in the United States named Pilgrim. Located in Dade County, Mo., its population was 135.

There are 114.4 million households across the nation — all potential gathering places for people to celebrate the holiday.

Statewide

HISTORICAL CIVILIAN LABOR FORCE

UNEMPLOYMENT RATES BY COUNTY*

(NUMBERS IN THOUSANDS)

MONTHLY DATA NOT SEASONALLY ADJUSTED

| Year and Month | Civilian Labor Force | | | | | | | Unemployed Number | Rate (%) |
|----------------|----------------------|------------|----------------------|--------------------|------------|---------|-------|-------------------|----------|
| | Total | Employment | Employed | | | | | | |
| | | | Total | Nonfarm Employment | | | | | |
| | | | **Manu- facturing | **Trade | **Services | | | | |
| 1977 | 1,939.0 | 1,816.7 | 1,648.1 | 507.5 | 357.2 | 254.5 | 122.3 | 6.3 % | |
| 1978 | 1,983.7 | 1,866.2 | 1,737.0 | 526.0 | 379.1 | 270.7 | 117.5 | 5.9 | |
| 1979 | 2,040.5 | 1,918.5 | 1,777.3 | 524.7 | 388.7 | 285.4 | 122.0 | 6.0 | |
| 1980 | 2,071.6 | 1,920.1 | 1,746.6 | 502.1 | 379.7 | 291.0 | 151.5 | 7.3 | |
| 1981 | 2,123.1 | 1,927.6 | 1,775.4 | 506.9 | 379.9 | 304.4 | 195.5 | 9.2 | |
| 1982 | 2,141.2 | 1,891.5 | 1,703.0 | 466.7 | 380.5 | 313.1 | 249.7 | 11.7 | |
| 1983 | 2,188.2 | 1,932.4 | 1,719.0 | 468.6 | 389.9 | 323.4 | 255.8 | 11.7 | |
| 1984 | 2,233.5 | 2,026.4 | 1,812.0 | 497.1 | 413.3 | 344.3 | 207.1 | 9.3 | |
| 1985 | 2,255.7 | 2,070.0 | 1,867.8 | 492.4 | 435.3 | 360.2 | 185.7 | 8.2 | |
| 1986 | 2,291.3 | 2,110.7 | 1,929.8 | 490.5 | 452.1 | 384.7 | 180.6 | 7.9 | |
| 1987 | 2,324.1 | 2,166.5 | 2,011.6 | 497.4 | 477.2 | 408.9 | 157.6 | 6.8 | |
| 1988 | 2,333.6 | 2,197.2 | 2,092.1 | 511.9 | 495.6 | 440.3 | 136.4 | 5.8 | |
| 1989 | 2,364.9 | 2,241.3 | 2,167.2 | 524.5 | 508.4 | 467.2 | 123.6 | 5.2 | |
| 1990 | 2,401.1 | 2,269.0 | 2,193.2 | 493.4 | 379.1 | 611.0 | 132.1 | 5.5 | |
| 1991 | 2,425.4 | 2,266.0 | 2,183.6 | 480.3 | 373.0 | 626.7 | 159.4 | 6.6 | |
| 1992 | 2,479.5 | 2,316.7 | 2,245.0 | 492.8 | 374.1 | 664.8 | 162.8 | 6.6 | |
| 1993 | 2,543.3 | 2,391.6 | 2,328.5 | 502.8 | 382.5 | 709.8 | 151.7 | 6.0 | |
| 1994 | 2,645.7 | 2,511.1 | 2,423.0 | 513.8 | 398.4 | 751.4 | 134.6 | 5.1 | |
| 1995 | 2,718.0 | 2,574.0 | 2,498.9 | 518.0 | 412.6 | 795.0 | 144.0 | 5.3 | |
| 1996 | 2,758.4 | 2,611.0 | 2,533.3 | 501.5 | 420.9 | 814.3 | 147.4 | 5.3 | |
| 1997 | 2,788.3 | 2,640.0 | 2,584.0 | 498.0 | 430.5 | 849.7 | 148.3 | 5.3 | |
| 1998 | 2,811.7 | 2,685.2 | 2,638.4 | 498.6 | 437.1 | 875.7 | 126.5 | 4.5 | |
| 1999 | 2,838.7 | 2,722.1 | 2,685.3 | 494.7 | 443.6 | 900.8 | 116.6 | 4.1 | |
| 2000 | 2,871.5 | 2,756.5 | 2,728.9 | 488.1 | 447.5 | 930.9 | 115.0 | 4.0 | |
| 2001 | 2,859.7 | 2,728.5 | 2,688.3 | 454.2 | 446.6 | 921.5 | 131.2 | 4.6 | |
| 2002 | 2,883.4 | 2,733.7 | 2,664.4 | 428.5 | 438.7 | 938.0 | 149.7 | 5.2 | |
| 2003 | 2,892.0 | 2,727.5 | 2,667.5 | 414.1 | 440.8 | 950.3 | 164.5 | 5.7 | |
| 2004 | 2,897.0 | 2,739.0 | 2,706.1 | 411.8 | 447.5 | 978.7 | 158.1 | 5.5 | |
| 2005 | 2,909.6 | 2,747.6 | 2,743.1 | 408.8 | 454.6 | 1,005.6 | 161.9 | 5.6 | |
| 2006 | 2,990.2 | 2,835.5 | 2,783.1 | 400.1 | 460.6 | 1,030.4 | 154.6 | 5.2 | |
| 2007 | | | | | | | | | |
| January | 3,002.4 | 2,841.9 | 2,754.7 | 393.7 | 457.9 | 1,015.7 | 160.5 | 5.3 % | |
| February | 3,004.6 | 2,845.4 | 2,761.6 | 392.1 | 456.0 | 1,019.7 | 159.2 | 5.3 | |
| March | 3,029.1 | 2,878.4 | 2,791.9 | 393.5 | 461.1 | 1,035.3 | 150.8 | 5.0 | |
| April | 3,004.1 | 2,881.1 | 2,806.6 | 393.6 | 462.4 | 1,044.9 | 123.0 | 4.1 | |
| May | 3,030.6 | 2,902.0 | 2,813.0 | 392.0 | 464.0 | 1,049.7 | 128.6 | 4.2 | |
| June | 3,066.0 | 2,929.9 | 2,811.0 | 392.4 | 464.0 | 1,057.6 | 136.1 | 4.4 | |
| July | 3,066.9 | 2,937.8 | 2,792.3 | 387.9 | 464.1 | 1,056.1 | 129.1 | 4.2 | |
| August (r) | 3,047.0 | 2,922.3 | 2,814.4 | 388.9 | 465.9 | 1,062.0 | 124.7 | 4.1 | |
| September (p) | 3,051.3 | 2,916.7 | 2,825.1 | 387.8 | 465.1 | 1,061.6 | 134.5 | 4.4 | |
| October | | | | | | | | | |
| November | | | | | | | | | |
| December | | | | | | | | | |

(r)=revised

**These industries not comparable to industry employment data before

(p)=preliminary

1990 because of change to NAICS coding system.

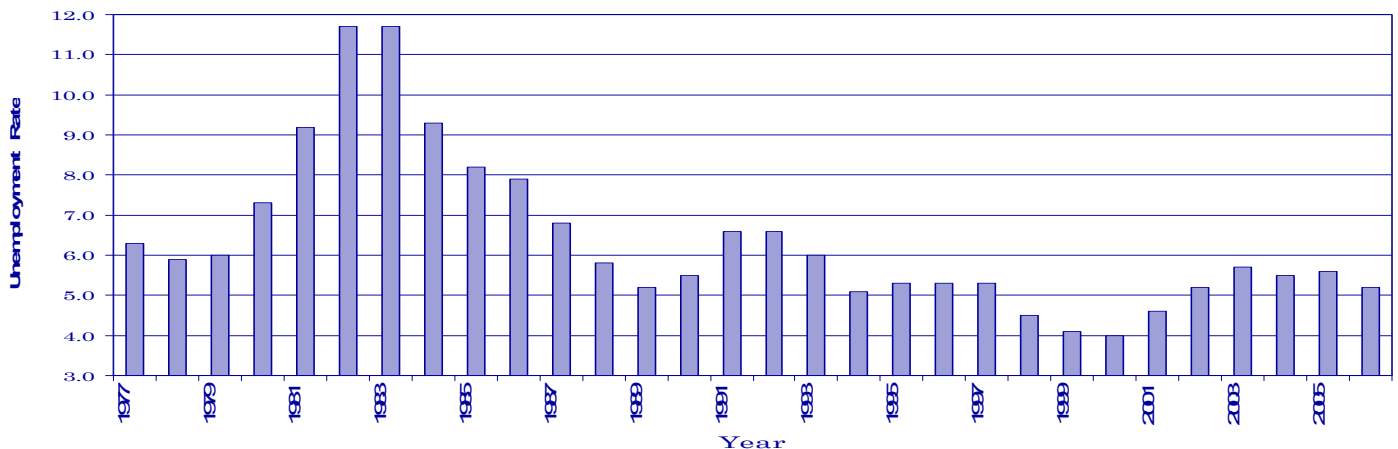
Trade = Wholesale and Retail Trade

Services = Professional/Business Services, Educational/Health Services, Leisure/Hospitality, and Other Services.

| County | Sep 2006 | Sep 2007 | County | Sep 2006 | Sep 2007 |
|------------|----------|----------|------------|----------|------------|
| | Anderson | 4.0 | | 3.9 | Lauderdale |
| Bedford | 4.9 | 5.0 | Lawrence | 9.1 | 7.5 |
| Benton | 6.5 | 5.7 | Lewis | 6.1 | 7.4 |
| Bledsoe | 5.2 | 5.1 | Lincoln | 3.5 | 3.3 |
| Blount | 3.4 | 3.6 | Loudon | 4.0 | 3.6 |
| Bradley | 4.3 | 4.2 | Macon | 5.2 | 4.5 |
| Campbell | 5.5 | 4.9 | Madison | 4.8 | 4.4 |
| Cannon | 4.0 | 4.1 | Marion | 5.1 | 5.7 |
| Carroll | 5.4 | 5.7 | Marshall | 5.1 | 8.4 |
| Carter | 4.1 | 4.6 | Maury | 4.5 | 9.4 |
| Cheatham | 3.6 | 3.6 | McMinn | 5.2 | 4.8 |
| Chester | 4.8 | 5.3 | McNairy | 5.7 | 6.4 |
| Claiborne | 4.9 | 5.2 | Meigs | 5.6 | 5.7 |
| Clay | 8.1 | 6.7 | Monroe | 5.1 | 5.2 |
| Cocke | 6.1 | 5.5 | Montgomery | 4.5 | 4.7 |
| Coffee | 4.8 | 4.3 | Moore | 4.0 | 4.2 |
| Crockett | 5.7 | 5.5 | Morgan | 5.7 | 5.1 |
| Cumberland | 4.9 | 4.5 | Obion | 5.1 | 5.0 |
| Davidson | 3.8 | 3.6 | Overton | 5.9 | 7.2 |
| Decatur | 5.6 | 5.1 | Perry | 5.5 | 7.5 |
| DeKalb | 4.9 | 4.1 | Pickett | 7.2 | 7.1 |
| Dickson | 4.0 | 3.8 | Polk | 4.2 | 4.8 |
| Dyer | 4.9 | 4.6 | Putnam | 5.3 | 4.4 |
| Fayette | 8.2 | 6.0 | Rhea | 5.0 | 5.0 |
| Fentress | 7.0 | 5.9 | Roane | 4.8 | 3.9 |
| Franklin | 5.1 | 4.6 | Robertson | 3.7 | 3.9 |
| Gibson | 6.4 | 6.1 | Rutherford | 3.6 | 3.5 |
| Giles | 5.8 | 5.9 | Scott | 7.2 | 6.5 |
| Grainger | 5.0 | 4.3 | Sequatchie | 4.0 | 4.1 |
| Greene | 6.4 | 6.1 | Sevier | 3.6 | 3.4 |
| Grundy | 6.6 | 5.3 | Shelby | 5.3 | 4.8 |
| Hamblen | 5.1 | 4.5 | Smith | 4.5 | 4.4 |
| Hamilton | 4.0 | 3.9 | Stewart | 5.8 | 5.7 |
| Hancock | 5.8 | 5.3 | Sullivan | 3.7 | 3.6 |
| Hardeman | 7.5 | 6.3 | Sumner | 3.7 | 3.8 |
| Hardin | 5.3 | 5.0 | Tipton | 5.1 | 4.9 |
| Hawkins | 5.4 | 4.0 | Trousdale | 5.0 | 4.0 |
| Haywood | 8.8 | 7.2 | Unicoi | 5.0 | 4.5 |
| Henderson | 6.1 | 5.8 | Union | 3.9 | 4.1 |
| Henry | 6.0 | 5.6 | Van Buren | 6.5 | 5.1 |
| Hickman | 4.6 | 5.2 | Warren | 7.6 | 5.9 |
| Houston | 6.6 | 5.7 | Washington | 3.9 | 3.8 |
| Humphreys | 5.7 | 5.8 | Wayne | 8.3 | 6.6 |
| Jackson | 5.5 | 5.1 | Weakley | 6.9 | 6.3 |
| Jefferson | 4.7 | 4.3 | White | 7.9 | 5.4 |
| Johnson | 5.5 | 5.3 | Williamson | 3.1 | 4.1 |
| Knox | 3.3 | 3.2 | Wilson | 3.9 | 3.4 |
| Lake | 5.6 | 4.9 | | | |

*Data Not Seasonally Adjusted

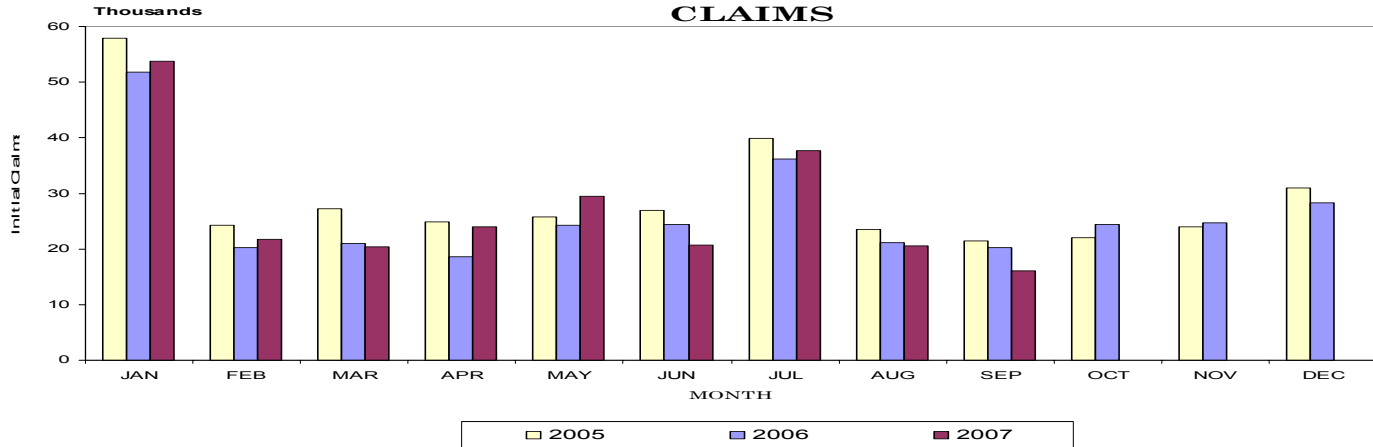
Unemployment Rates 1977-2006



Statewide

UNEMPLOYMENT INSURANCE ACTIVITIES

MONTHLY INITIAL CLAIMS

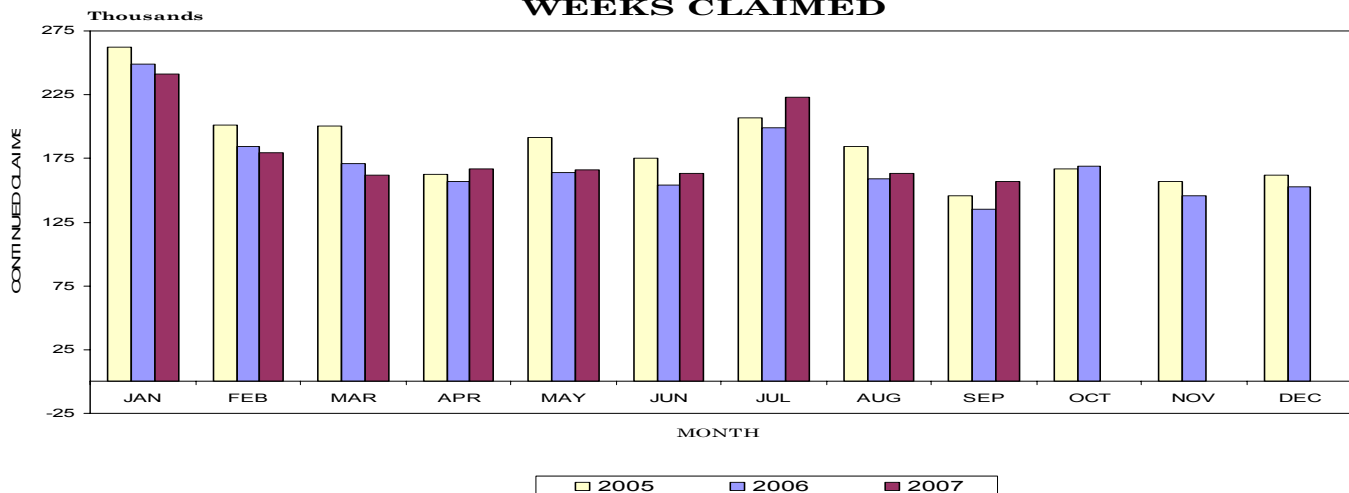


BENEFIT PROGRAMS

| STATE BENEFIT PROGRAM | | | | FEDERAL BENEFIT PROGRAMS | | | |
|-------------------------------|---------------|---------------|---------------|---|-----------|------------|-----------|
| CLAIMS | Sept. 2006 | Aug. 2007 | Sept. 2007 | FORMER FEDERAL EMPLOYEES | | | |
| | Sept. 2006 | Aug. 2007 | Sept. 2007 | Sept. 2006 | Aug. 2007 | Sept. 2007 | |
| Initial Claims | 20,304 | 20,505 | 16,134 | Benefits Paid | \$239,576 | \$265,409 | \$233,667 |
| Continued Weeks Claimed | 135,339 | 163,510 | 157,083 | Benefit Weeks Claimed | 880 | 917 | 699 |
| Nonmonetary Determinations | 5,787 | 7,309 | 5,885 | Initial Claims | 90 | 68 | 71 |
| Appeals Decisions | 1,672 | 1,881 | 1,565 | Continued Weeks Claimed | 835 | 885 | 788 |
| Lower Authority | 1,424 | 1,647 | 1,404 | Appeals Decisions | 9 | 7 | 6 |
| Higher Authority | 248 | 234 | 161 | FORMER MILITARY PERSONNEL | | | |
| BENEFITS | | | | Benefits Paid | \$415,143 | \$364,335 | \$348,381 |
| Amount Paid | \$27,050,726 | \$37,139,379 | \$32,376,133 | Benefit Weeks Claimed | 1,468 | 1,363 | 1,141 |
| Benefit Weeks Paid | 130,605 | 168,865 | 138,640 | Initial Claims | 137 | 117 | 116 |
| Average Weekly Benefit Amount | \$220 | \$223 | \$227 | Continued Weeks Claimed | 1,491 | 1,293 | 1,274 |
| First Payments | 8,398 | 9,998 | 7,397 | Appeals Decisions | 4 | 8 | 5 |
| Final Payments | 3,414 | 4,064 | 3,636 | *Trust Fund includes a one-time deposit in March 2002 of \$162 million of Reed Act funds. | | | |
| Average Weeks Duration | 14 | 14 | 14 | | | | |
| Trust Fund Balance* | \$679,162,417 | \$632,361,840 | \$592,897,795 | | | | |

CONTINUED WEEKS CLAIMED

MONTHLY CONTINUED WEEKS CLAIMED



Statewide

ESTIMATED NONFARM EMPLOYMENT (in thousands)

| Industry | September 2006 | Revised August 2007 | Preliminary September 2007 | Net Change | |
|--|----------------|---------------------|----------------------------|------------------------|------------------------|
| | | | | Sep. 2006 Sep. 2007 | Aug. 2007 Sep. 2007 |
| Total Nonfarm | 2,808.0 | 2,814.4 | 2,825.1 | 17.1 | 10.7 |
| Total Private | 2,388.2 | 2,408.2 | 2,405.3 | 17.1 | -2.9 |
| Goods-Producing | 536.8 | 535.2 | 533.5 | -3.3 | -1.7 |
| Natural Resources & Mining | 4.2 | 4.3 | 4.3 | 0.1 | 0.0 |
| Construction | 134.1 | 142.0 | 141.4 | 7.3 | -0.6 |
| Manufacturing | 398.5 | 388.9 | 387.8 | -10.7 | -1.1 |
| Durable Goods Manufacturing | 250.6 | 244.2 | 243.4 | -7.2 | -0.8 |
| Wood Product Manufacturing | 17.8 | 18.0 | 17.8 | 0.0 | -0.2 |
| Nonmetallic Mineral Product Manufacturing | 16.3 | 16.7 | 16.6 | 0.3 | -0.1 |
| Primary Metal Manufacturing | 11.5 | 11.1 | 11.2 | -0.3 | 0.1 |
| Fabricated Metal Product Manufacturing | 44.0 | 45.2 | 45.0 | 1.0 | -0.2 |
| Machinery Manufacturing | 33.2 | 30.9 | 30.8 | -2.4 | -0.1 |
| Computer & Electronic Product Manufacturing | 9.2 | 8.0 | 7.9 | -1.3 | -0.1 |
| Electrical Equipment & Appliance Mfg. | 23.3 | 23.3 | 23.1 | -0.2 | -0.2 |
| Transportation Equipment Manufacturing | 62.7 | 60.3 | 60.1 | -2.6 | -0.2 |
| Motor Vehicle Parts Manufacturing | 36.1 | 35.9 | 35.9 | -0.2 | 0.0 |
| Furniture & Related Product Manufacturing | 17.7 | 16.4 | 16.5 | -1.2 | 0.1 |
| Miscellaneous Manufacturing | 14.9 | 14.3 | 14.4 | -0.5 | 0.1 |
| Nondurable Goods Manufacturing | 147.9 | 144.7 | 144.4 | -3.5 | -0.3 |
| Textile Mills, Products, & Apparel | 16.1 | 14.5 | 14.5 | -1.6 | 0.0 |
| Food Manufacturing | 33.5 | 33.2 | 33.1 | -0.4 | -0.1 |
| Animal Slaughtering & Processing | 11.4 | 11.6 | 11.5 | 0.1 | -0.1 |
| Bakeries & Tortilla Manufacturing | 7.5 | 7.2 | 7.2 | -0.3 | 0.0 |
| Beverage & Tobacco Product Manufacturing | 5.0 | 4.9 | 4.9 | -0.1 | 0.0 |
| Paper Manufacturing | 18.5 | 18.4 | 18.3 | -0.2 | -0.1 |
| Printing & Related Support Activities | 18.0 | 17.2 | 17.2 | -0.8 | 0.0 |
| Chemical Manufacturing | 25.7 | 25.0 | 25.1 | -0.6 | 0.1 |
| Plastics & Rubber Products Manufacturing | 28.6 | 29.2 | 29.0 | 0.4 | -0.2 |
| Plastics Product Manufacturing | 15.2 | 15.5 | 15.3 | 0.1 | -0.2 |
| Rubber Product Manufacturing | 13.4 | 13.7 | 13.7 | 0.3 | 0.0 |
| Service-Providing | 2,271.2 | 2,279.2 | 2,291.6 | 20.4 | 12.4 |
| Trade, Transportation, & Utilities | 609.4 | 614.0 | 613.5 | 4.1 | -0.5 |
| Wholesale Trade | 133.7 | 135.7 | 135.8 | 2.1 | 0.1 |
| Merchant Wholesalers, Durable Goods | 69.2 | 70.9 | 70.7 | 1.5 | -0.2 |
| Merchant Wholesalers, Nondurable Goods | 47.2 | 47.0 | 47.2 | 0.0 | 0.2 |
| Wholesale Electronic Markets | 17.3 | 17.8 | 17.9 | 0.6 | 0.1 |
| Retail Trade | 327.1 | 330.2 | 329.3 | 2.2 | -0.9 |
| Motor Vehicle & Parts Dealers | 44.3 | 44.5 | 44.5 | 0.2 | 0.0 |
| Furniture & Home Furnishings Stores | 10.4 | 10.2 | 10.1 | -0.3 | -0.1 |
| Building Material, Garden Equipment/Supplies | 28.2 | 30.4 | 30.0 | 1.8 | -0.4 |
| Food & Beverage Stores | 46.9 | 47.6 | 47.7 | 0.8 | 0.1 |
| Health & Personal Care Stores | 22.6 | 23.1 | 23.2 | 0.6 | 0.1 |
| Gasoline Stations | 24.4 | 24.3 | 24.3 | -0.1 | 0.0 |
| Clothing & Clothing Accessories Stores | 28.9 | 27.8 | 27.3 | -1.6 | -0.5 |
| Sporting Goods, Hobby, Book, & Music Stores | 12.5 | 12.5 | 12.7 | 0.2 | 0.2 |
| General Merchandise Stores | 70.6 | 71.8 | 71.4 | 0.8 | -0.4 |
| Miscellaneous Store Retailers | 18.1 | 17.7 | 17.8 | -0.3 | 0.1 |
| Nonstore Retailers | 11.3 | 11.3 | 11.2 | -0.1 | -0.1 |
| Transportation, Warehousing, & Utilities | 148.6 | 148.1 | 148.4 | -0.2 | 0.3 |
| Utilities | 3.5 | 3.3 | 3.3 | -0.2 | 0.0 |
| Transportation & Warehousing | 145.1 | 144.8 | 145.1 | 0.0 | 0.3 |
| Truck Transportation | 65.8 | 65.7 | 65.8 | 0.0 | 0.1 |
| Information | 50.6 | 51.8 | 51.8 | 1.2 | 0.0 |
| Publishing Industries (except internet) | 14.3 | 14.1 | 14.1 | -0.2 | 0.0 |
| Telecommunications | 16.4 | 17.6 | 17.5 | 1.1 | -0.1 |
| Financial Activities | 145.1 | 145.2 | 144.9 | -0.2 | -0.3 |
| Finance & Insurance | 107.9 | 107.4 | 107.3 | -0.6 | -0.1 |
| Real Estate, Rental, & Leasing | 37.2 | 37.8 | 37.6 | 0.4 | -0.2 |
| Professional & Business Services | 326.0 | 322.8 | 325.2 | -0.8 | 2.4 |
| Professional, Scientific, & Technical Services | 106.5 | 106.6 | 106.5 | 0.0 | -0.1 |
| Management of Companies & Enterprises | 23.9 | 23.8 | 23.8 | -0.1 | 0.0 |
| Administrative, Support, & Waste Management | 195.6 | 192.4 | 194.9 | -0.7 | 2.5 |
| Educational & Health Services | 342.2 | 347.0 | 349.2 | 7.0 | 2.2 |
| Educational Services | 46.5 | 44.8 | 47.2 | 0.7 | 2.4 |
| Health Care & Social Assistance | 295.7 | 302.2 | 302.0 | 6.3 | -0.2 |
| Ambulatory Health Care Services | 110.9 | 113.7 | 113.8 | 2.9 | 0.1 |
| Hospitals | 90.8 | 91.6 | 91.6 | 0.8 | 0.0 |
| Nursing & Residential Care Facilities | 52.7 | 54.2 | 54.1 | 1.4 | -0.1 |
| Social Assistance | 41.3 | 42.7 | 42.5 | 1.2 | -0.2 |
| Leisure & Hospitality | 276.5 | 289.7 | 284.8 | 8.3 | -4.9 |
| Arts, Entertainment, & Recreation | 32.7 | 36.4 | 34.3 | 1.6 | -2.1 |
| Accommodation & Food Services | 243.8 | 253.3 | 250.5 | 6.7 | -2.8 |
| Accommodation | 35.5 | 37.6 | 36.3 | 0.8 | -1.3 |
| Food Services & Drinking Places | 208.3 | 215.7 | 214.2 | 5.9 | -1.5 |
| Other Services | 101.6 | 102.5 | 102.4 | 0.8 | -0.1 |
| Repair & Maintenance | 22.4 | 22.4 | 22.5 | 0.1 | 0.1 |
| Personal & Laundry Services | 25.1 | 25.6 | 25.7 | 0.6 | 0.1 |
| Government | 419.8 | 406.2 | 419.8 | 0.0 | 13.6 |
| Federal Government | 48.8 | 49.0 | 48.9 | 0.1 | -0.1 |
| State Government | 99.4 | 93.4 | 99.4 | 0.0 | 6.0 |
| State Government Educational Services | 50.8 | 45.3 | 50.9 | 0.1 | 5.6 |
| Local Government | 271.6 | 263.8 | 271.5 | -0.1 | 7.7 |
| Local Government Educational Services | 140.0 | 134.1 | 141.1 | 1.1 | 7.0 |

HOURS AND EARNINGS OF PRODUCTION WORKERS

AVERAGE WEEKLY EARNINGS

| Industry | Sep. 2006 | Aug. 2007 | Sep. 2007 |
|--|-----------|-----------|-----------|
| Manufacturing | \$557.17 | \$562.40 | \$560.20 |
| Durable Goods Manufacturing | \$545.27 | \$538.20 | \$536.64 |
| Fabricated Metal Product Manufacturing | \$597.24 | \$623.70 | \$621.99 |
| Machinery Manufacturing | \$553.15 | \$609.23 | \$577.87 |
| Nondurable Goods Manufacturing | \$578.93 | \$600.30 | \$597.61 |
| Food Manufacturing | \$461.92 | \$414.64 | \$422.40 |

AVERAGE WEEKLY HOURS

| Industry | Sep. 2006 | Aug. 2007 | Sep. 2007 |
|--|-----------|-----------|-----------|
| Manufacturing | 39.6 | 40.2 | 39.9 |
| Durable Goods Manufacturing | 39.2 | 39.4 | 39.0 |
| Fabricated Metal Product Manufacturing | 39.5 | 40.5 | 40.6 |
| Machinery Manufacturing | 40.2 | 43.3 | 41.1 |
| Nondurable Goods Manufacturing | 40.4 | 41.4 | 41.3 |
| Food Manufacturing | 37.8 | 35.5 | 35.2 |

AVERAGE HOURLY EARNINGS

| Industry | Sep. 2006 | Aug. 2007 | Sep. 2007 |
|--|-----------|-----------|-----------|
| Manufacturing | \$14.07 | \$13.99 | \$14.04 |
| Durable Goods Manufacturing | \$13.91 | \$13.66 | \$13.76 |
| Fabricated Metal Product Manufacturing | \$15.12 | \$15.40 | \$15.32 |
| Machinery Manufacturing | \$13.76 | \$14.07 | \$14.06 |
| Nondurable Goods Manufacturing | \$14.33 | \$14.50 | \$14.47 |
| Food Manufacturing | \$12.22 | \$11.68 | \$12.00 |

NONFARM EMPLOYMENT AND LABOR FORCE IN TENNESSEE

Tennessee's seasonally adjusted estimated unemployment rate for September 2007 was 4.7 percent, up 0.7 percent from the August 2007 rate. This is the fifth of the last six months that the current rate is less than or equal to the national average.

The United States' unemployment rate was 4.7 percent in September 2007. In September 2006, the national unemployment rate was 4.6 percent, and the state's unemployment rate was 5.1 percent.

Across Tennessee, the unemployment rate increased in 82 counties, decreased in four counties, and remained the same in nine counties. The lowest rate occurred in Knox County at 3.2 percent, up 0.1 percent from the previous month. The highest rate was Maury County's 9.4 percent, up from 8.5 percent in August 2007.

(Continued on Page 6)

CIVILIAN LABOR FORCE

CIVILIAN LABOR FORCE SUMMARY

| September 2006 | | | | | August 2007 | | | | September 2007 | | | |
|---------------------------------------|-------------|-------------|------------|------|-------------|-------------|------------|------|----------------|-------------|------------|------|
| | Labor Force | Employment | Unemployed | Rate | Labor Force | Employment | Unemployed | Rate | Labor Force | Employment | Unemployed | Rate |
| Seasonally Adjusted | | | | | | | | | | | | |
| U.S. | 151,818,000 | 144,906,000 | 6,912,000 | 4.6 | 152,891,000 | 145,794,000 | 7,097,000 | 4.6 | 153,464,000 | 146,257,000 | 7,207,000 | 4.7 |
| TENNESSEE | 3,003,500 | 2,850,900 | 152,600 | 5.1 | 3,029,900 | 2,907,700 | 122,200 | 4.0 | 3,048,000 | 2,905,800 | 142,300 | 4.7 |
| Not Seasonally Adjusted | | | | | | | | | | | | |
| U.S. | 151,635,000 | 145,010,000 | 6,625,000 | 4.4 | 153,493,000 | 146,406,000 | 7,088,000 | 4.6 | 153,400,000 | 146,448,000 | 6,952,000 | 4.5 |
| TENNESSEE | 2,999,300 | 2,862,200 | 137,200 | 4.6 | 3,047,000 | 2,922,300 | 124,700 | 4.1 | 3,051,300 | 2,916,700 | 134,500 | 4.4 |
| Metropolitan Statistical Areas | | | | | | | | | | | | |
| Chattanooga | 260,160 | 249,970 | 10,200 | 3.9 | 265,750 | 256,070 | 9,670 | 3.6 | 264,820 | 254,540 | 10,290 | 3.9 |
| Clarksville | 107,760 | 102,640 | 5,120 | 4.7 | 108,270 | 103,020 | 5,250 | 4.8 | 109,890 | 104,060 | 5,830 | 5.3 |
| Cleveland | 55,480 | 53,080 | 2,400 | 4.3 | 56,020 | 53,780 | 2,240 | 4.0 | 56,270 | 53,840 | 2,430 | 4.3 |
| Jackson | 55,340 | 52,670 | 2,660 | 4.8 | 56,750 | 54,350 | 2,400 | 4.2 | 56,790 | 54,200 | 2,590 | 4.6 |
| Johnson City | 96,930 | 92,980 | 3,950 | 4.1 | 99,580 | 95,760 | 3,820 | 3.8 | 99,850 | 95,740 | 4,110 | 4.1 |
| Kingsport-Bristol | 144,520 | 138,540 | 5,980 | 4.1 | 146,790 | 141,220 | 5,570 | 3.8 | 146,820 | 141,160 | 5,660 | 3.9 |
| Knoxville | 350,250 | 338,060 | 12,190 | 3.5 | 357,110 | 345,840 | 11,270 | 3.2 | 357,090 | 344,970 | 12,120 | 3.4 |
| Memphis | 611,880 | 579,230 | 32,650 | 5.3 | 620,670 | 592,350 | 28,320 | 4.6 | 622,610 | 591,970 | 30,640 | 4.9 |
| Morristown | 64,640 | 61,450 | 3,200 | 4.9 | 65,000 | 62,360 | 2,640 | 4.1 | 65,330 | 62,480 | 2,850 | 4.4 |
| Nashville | 772,490 | 743,640 | 28,860 | 3.7 | 792,110 | 764,560 | 27,540 | 3.5 | 789,620 | 760,130 | 29,500 | 3.7 |
| Micropolitan Statistical Areas | | | | | | | | | | | | |
| Athens | 24,930 | 23,640 | 1,290 | 5.2 | 24,530 | 23,420 | 1,110 | 4.5 | 24,670 | 23,480 | 1,190 | 4.8 |
| Brownsville | 9,500 | 8,660 | 830 | 8.8 | 9,430 | 8,740 | 690 | 7.3 | 9,830 | 9,120 | 710 | 7.2 |
| Columbia | 36,330 | 34,680 | 1,650 | 4.5 | 36,130 | 33,060 | 3,060 | 8.5 | 36,340 | 32,940 | 3,400 | 9.4 |
| Cookeville | 50,060 | 47,350 | 2,710 | 5.4 | 50,190 | 47,790 | 2,400 | 4.8 | 50,320 | 47,790 | 2,530 | 5.0 |
| Crossville | 22,940 | 21,810 | 1,120 | 4.9 | 22,820 | 21,800 | 1,020 | 4.5 | 23,070 | 22,040 | 1,030 | 4.5 |
| Dyersburg | 17,440 | 16,590 | 850 | 4.9 | 17,340 | 16,610 | 730 | 4.2 | 17,440 | 16,640 | 800 | 4.6 |
| Greeneville | 33,530 | 31,390 | 2,140 | 6.4 | 31,950 | 30,120 | 1,830 | 5.7 | 32,320 | 30,350 | 1,970 | 6.1 |
| Harriman | 26,700 | 25,420 | 1,280 | 4.8 | 27,040 | 26,050 | 990 | 3.7 | 27,050 | 26,000 | 1,050 | 3.9 |
| Humboldt | 20,900 | 19,570 | 1,330 | 6.4 | 21,220 | 19,990 | 1,230 | 5.8 | 21,270 | 19,960 | 1,300 | 6.1 |
| LaFollette | 16,790 | 15,860 | 930 | 5.5 | 17,050 | 16,270 | 790 | 4.6 | 16,960 | 16,120 | 840 | 4.9 |
| Lawrenceburg | 16,740 | 15,220 | 1,520 | 9.1 | 16,440 | 15,260 | 1,180 | 7.1 | 16,460 | 15,220 | 1,230 | 7.5 |
| Lewisburg | 12,650 | 12,010 | 640 | 5.1 | 12,700 | 11,720 | 980 | 7.7 | 12,860 | 11,770 | 1,080 | 8.4 |
| Martin | 16,010 | 14,900 | 1,110 | 6.9 | 15,970 | 14,840 | 1,120 | 7.0 | 15,900 | 14,900 | 1,000 | 6.3 |
| McMinnville | 17,900 | 16,540 | 1,360 | 7.6 | 17,080 | 16,110 | 970 | 5.7 | 17,330 | 16,300 | 1,030 | 5.9 |
| Newport | 16,190 | 15,200 | 980 | 6.1 | 16,320 | 15,520 | 800 | 4.9 | 16,350 | 15,460 | 900 | 5.5 |
| Paris | 13,970 | 13,130 | 840 | 6.0 | 14,120 | 13,350 | 770 | 5.4 | 14,140 | 13,340 | 800 | 5.6 |
| Sevierville | 47,740 | 46,000 | 1,740 | 3.6 | 50,050 | 48,500 | 1,540 | 3.1 | 49,020 | 47,340 | 1,680 | 3.4 |
| Shelbyville | 22,220 | 21,140 | 1,080 | 4.9 | 22,410 | 21,380 | 1,030 | 4.6 | 22,570 | 21,430 | 1,140 | 5.0 |
| Tullahoma | 48,500 | 46,140 | 2,360 | 4.9 | 48,810 | 46,760 | 2,060 | 4.2 | 49,110 | 46,950 | 2,160 | 4.4 |
| Union City | 18,460 | 17,470 | 990 | 5.3 | 18,980 | 17,960 | 1,030 | 5.4 | 19,270 | 18,240 | 1,030 | 5.3 |

(Continued from Page 5) Total nonfarm employment increased by 17,100 jobs from September 2006 to September 2007. During this period, there were increases in construction (up 7,300 jobs); accommodation/food services (up 6,700 jobs), which includes an increase of 5,900 jobs in food services/drinking places; health care/social assistance (up 6,300 jobs), which includes an increase of 2,900 jobs in ambulatory health care services and 1,400 in nursing/residential care facilities; retail trade (up 2,200 jobs), which includes an increase of 1,800 jobs in building

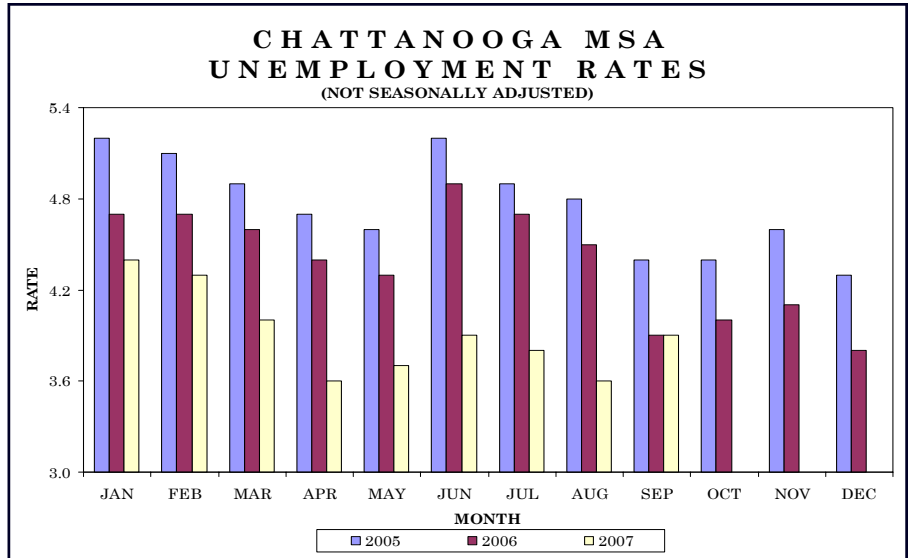
material/garden equipment/supplies; wholesale trade (up 2,100 jobs), which includes an increase of 1,500 jobs in durable goods merchant wholesalers; and telecommunication and local government educational services (both up 1,100 jobs). This was partially offset by declines of 2,600 jobs in transportation equipment manufacturing; 2,400 jobs in machinery manufacturing; 1,600 jobs in both textile mills/products/apparel and clothing/clothing accessories stores; and 1,300 jobs in computer/electronic product manufacturing.

During September, nonfarm employment increased by 10,700 jobs. There were seasonal increases in local government educational services (up 7,000 jobs), state government educational services (up 5,600 jobs), administrative/support/waste management (up 2,500 jobs), and educational services (up 2,400 jobs). This was partially offset by a decrease in leisure/hospitality (down 4,900 jobs), which includes a drop of 2,800 jobs in accommodation/food services and a decline of 2,100 jobs in arts/entertainment/recreation.

The data from all the nonfarm employment estimates tables includes all full- and part-time nonfarm wage and salary employees who worked during or received pay for any part of the pay period that includes the 12th of the month. This is a count of jobs by place of work. Agricultural workers, proprietors, self-employed persons, workers in private households, and unpaid family workers are excluded. These numbers may not add due to rounding. Data is based on the 2006 benchmark.

Total nonfarm employment increased by 700 jobs from August to September. There were seasonal increases in education/health services (up 700 jobs), state government (up 400 jobs), and local government (up 300 jobs). This was partially offset by a decline of 200 jobs in accommodation/food services.

During the past 12 months, nonfarm employment increased by 1,200 jobs. During that time, goods-producing jobs declined by 300, and service-providing jobs increased by 1,500.



HOURS AND EARNINGS OF PRODUCTION WORKERS

CHATTANOOGA MSA

| Industry | Average Weekly Earnings | | Average Weekly Hours | | | Average Hourly Earnings | | | |
|--------------------------------|-------------------------|-----------|----------------------|-----------|-----------|-------------------------|-----------|-----------|---------|
| | Sep. 2006 | Aug. 2007 | Sep. 2006 | Aug. 2007 | Sep. 2007 | Sep. 2006 | Aug. 2007 | Sep. 2007 | |
| Manufacturing | \$536.36 | \$540.47 | \$538.72 | 41.1 | 41.8 | 41.6 | \$13.05 | \$12.93 | \$12.95 |
| Durable Goods Manufacturing | \$571.37 | \$594.38 | \$588.27 | 40.9 | 42.7 | 42.2 | \$13.97 | \$13.92 | \$13.94 |
| Nondurable Goods Manufacturing | \$498.08 | \$495.67 | \$497.31 | 41.3 | 41.1 | 41.1 | \$12.06 | \$12.06 | \$12.10 |

ESTIMATED NONFARM EMPLOYMENT (in thousands)

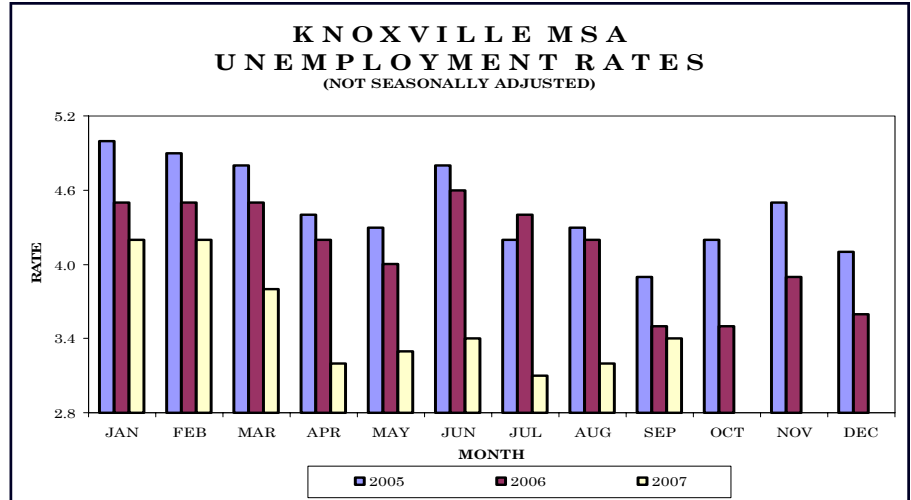
| Industry | September 2006 | Revised August 2007 | Preliminary September 2007 | Net Change | |
|---|----------------|---------------------|----------------------------|--------------------------|-------------------------|
| | | | | Sept. 2006 Sept. 2007 | Aug. 2007 Sept. 2007 |
| Total Nonfarm | 248.3 | 248.8 | 249.5 | 1.2 | 0.7 |
| Total Private | 213.1 | 214.0 | 214.1 | 1.0 | 0.1 |
| Goods-Producing | 47.3 | 47.2 | 47.0 | -0.3 | -0.2 |
| Natural Resources, Mining, & Construction | 11.7 | 11.8 | 11.7 | 0.0 | -0.1 |
| Manufacturing | 35.6 | 35.4 | 35.3 | -0.3 | -0.1 |
| Durable Goods Manufacturing | 16.6 | 16.5 | 16.4 | -0.2 | -0.1 |
| Nondurable Goods Manufacturing | 19.0 | 18.9 | 18.9 | -0.1 | 0.0 |
| Textile Mills | 4.4 | 4.3 | 4.3 | -0.1 | 0.0 |
| Service-Providing | 201.0 | 201.6 | 202.5 | 1.5 | 0.9 |
| Trade, Transportation, & Utilities | 56.5 | 56.2 | 56.0 | -0.5 | -0.2 |
| Wholesale Trade | 9.0 | 8.7 | 8.7 | -0.3 | 0.0 |
| Retail Trade | 26.5 | 26.7 | 26.6 | 0.1 | -0.1 |
| General Merchandise Stores | 6.5 | 6.7 | 6.7 | 0.2 | 0.0 |
| Transportation, Warehousing, & Utilities | 21.0 | 20.8 | 20.7 | -0.3 | -0.1 |
| Information | 3.5 | 3.7 | 3.7 | 0.2 | 0.0 |
| Financial Activities | 18.7 | 19.1 | 19.2 | 0.5 | 0.1 |
| Professional & Business Services | 27.5 | 27.7 | 27.7 | 0.2 | 0.0 |
| Educational & Health Services | 25.4 | 25.3 | 26.0 | 0.6 | 0.7 |
| Leisure & Hospitality | 23.3 | 23.9 | 23.7 | 0.4 | -0.2 |
| Accommodation & Food Services | 20.5 | 21.1 | 20.9 | 0.4 | -0.2 |
| Other Services | 10.9 | 10.9 | 10.8 | -0.1 | -0.1 |
| Government | 35.2 | 34.8 | 35.4 | 0.2 | 0.6 |
| Federal Government | 6.3 | 6.3 | 6.2 | -0.1 | -0.1 |
| State Government | 6.2 | 5.8 | 6.2 | 0.0 | 0.4 |
| Local Government | 22.7 | 22.7 | 23.0 | 0.3 | 0.3 |



Knoxville MSA - Anderson, Blount, Knox, Loudon, Union

Total nonfarm employment increased by 1,500 jobs from August to September. There were seasonal increases in state government (up 1,400 jobs); local government (up 600 jobs); and professional/business services, education/health services (up 300 jobs), which includes an increase of 200 jobs in administrative/support/waste management. This was partially offset by drops in educational/health services (down 300 jobs) and leisure/hospitality (down 200 jobs).

During the past 12 months, nonfarm employment increased by 1,900 jobs. During that time, goods-producing jobs increased by 800, while service-providing jobs increased by 1,100.



HOURS AND EARNINGS OF PRODUCTION WORKERS KNOXVILLE MSA

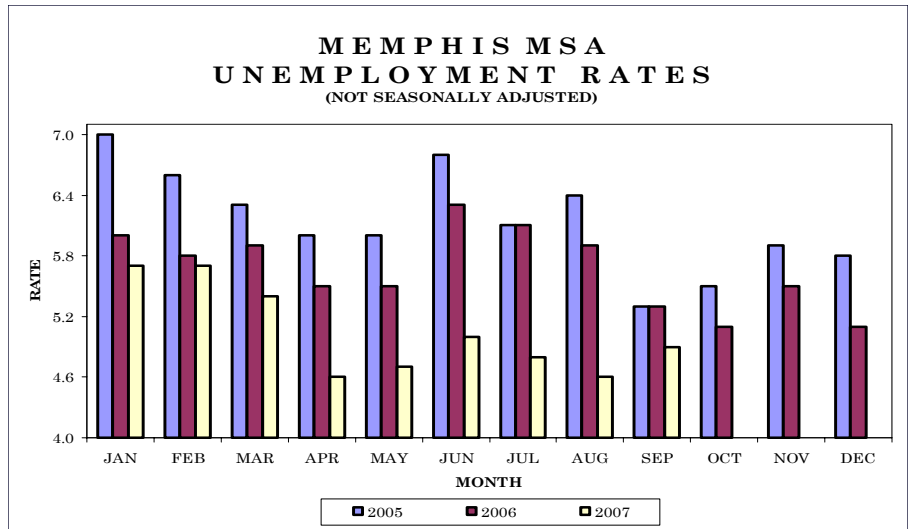
| Industry | Average Weekly Earnings | | | Average Weekly Hours | | | Average Hourly Earnings | | |
|--------------------------------|-------------------------|-----------|-----------|----------------------|-----------|-----------|-------------------------|-----------|-----------|
| | Sep. 2006 | Aug. 2007 | Sep. 2007 | Sep. 2006 | Aug. 2007 | Sep. 2007 | Sep. 2006 | Aug. 2007 | Sep. 2007 |
| Manufacturing | \$625.95 | \$636.09 | \$622.38 | 39.0 | 39.0 | 38.3 | \$16.05 | \$16.31 | \$16.25 |
| Durable Goods Manufacturing | \$688.93 | \$683.90 | \$659.71 | 39.3 | 38.1 | 37.0 | \$17.53 | \$17.95 | \$17.83 |
| Nondurable Goods Manufacturing | \$477.22 | \$532.93 | \$539.23 | 38.3 | 40.9 | 41.1 | \$12.46 | \$13.03 | \$13.12 |

ESTIMATED NONFARM EMPLOYMENT (in thousands)

| Industry | September 2006 | Revised August 2007 | Preliminary September 2007 | Net Change | |
|---|----------------|---------------------|----------------------------|-------------------------|------------------------|
| | | | | Sept. 2006 - Sept. 2007 | Aug. 2007 - Sept. 2007 |
| Total Nonfarm | 336.6 | 337.0 | 338.5 | 1.9 | 1.5 |
| Total Private | 283.6 | 286.1 | 285.6 | 2.0 | -0.5 |
| Goods-Producing | 57.2 | 58.1 | 58.0 | 0.8 | -0.1 |
| Natural Resources, Mining, & Construction | 18.7 | 19.4 | 19.5 | 0.8 | 0.1 |
| Manufacturing | 38.5 | 38.7 | 38.5 | 0.0 | -0.2 |
| Durable Goods Manufacturing | 28.7 | 28.8 | 28.7 | 0.0 | -0.1 |
| Fabricated Metal Product Manufacturing | 8.5 | 8.7 | 8.6 | 0.1 | -0.1 |
| Transportation Equipment Manufacturing | 8.7 | 8.6 | 8.6 | -0.1 | 0.0 |
| Nondurable Goods Manufacturing | 9.8 | 9.9 | 9.8 | 0.0 | -0.1 |
| Service-Providing | 279.4 | 278.9 | 280.5 | 1.1 | 1.6 |
| Trade, Transportation, & Utilities | 72.0 | 72.5 | 72.5 | 0.5 | 0.0 |
| Wholesale Trade | 16.0 | 16.0 | 16.0 | 0.0 | 0.0 |
| Retail Trade | 44.6 | 45.2 | 45.2 | 0.6 | 0.0 |
| Food & Beverage Stores | 6.7 | 6.7 | 6.8 | 0.1 | 0.1 |
| General Merchandise Stores | 8.5 | 8.7 | 8.7 | 0.2 | 0.0 |
| Transportation, Warehousing, & Utilities | 11.4 | 11.3 | 11.3 | -0.1 | 0.0 |
| Information | 6.1 | 6.1 | 6.0 | -0.1 | -0.1 |
| Financial Activities | 17.5 | 17.7 | 17.6 | 0.1 | -0.1 |
| Professional & Business Services | 39.9 | 39.7 | 40.0 | 0.1 | 0.3 |
| Administrative, Support, & Waste Management | 19.8 | 19.8 | 20.0 | 0.2 | 0.2 |
| Educational & Health Services | 40.6 | 41.3 | 41.0 | 0.4 | -0.3 |
| Leisure & Hospitality | 36.3 | 36.5 | 36.3 | 0.0 | -0.2 |
| Accommodation & Food Services | 32.6 | 32.7 | 32.6 | 0.0 | -0.1 |
| Food Services & Drinking Places | 29.5 | 29.8 | 29.7 | 0.2 | -0.1 |
| Other Services | 14.0 | 14.2 | 14.2 | 0.2 | 0.0 |
| Government | 53.0 | 50.9 | 52.9 | -0.1 | 2.0 |
| Federal Government | 5.1 | 4.9 | 4.9 | -0.2 | 0.0 |
| State Government | 19.8 | 18.5 | 19.9 | 0.1 | 1.4 |
| Local Government | 28.1 | 27.5 | 28.1 | 0.0 | 0.6 |

Total nonfarm employment increased by 3,700 jobs from August to September. There were seasonal increases in local government (up 1,500 jobs), state government (up 1,200 jobs), administrative/support/waste management (up 1,000 jobs), and educational/health services (up 700 jobs). This was partially offset by a decline in food services/drinking places (down 600 jobs).

During the past 12 months, nonfarm employment increased by 6,500 jobs. During that time, goods-producing jobs decreased by 1,500, and service-providing jobs increased by 8,000.



HOURS AND EARNINGS OF PRODUCTION WORKERS

MEMPHIS MSA

| Industry | Average Weekly Earnings | | | Average Weekly Hours | | | Average Hourly Earnings | | |
|--------------------------------|-------------------------|-----------|-----------|----------------------|-----------|-----------|-------------------------|-----------|-----------|
| | Sep. 2006 | Aug. 2007 | Sep. 2007 | Sep. 2006 | Aug. 2007 | Sep. 2007 | Sep. 2006 | Aug. 2007 | Sep. 2007 |
| Manufacturing | \$624.24 | \$674.29 | \$646.93 | 43.2 | 44.1 | 42.2 | \$14.45 | \$15.29 | \$15.33 |
| Durable Goods Manufacturing | \$519.17 | \$564.19 | \$567.75 | 38.6 | 39.9 | 39.4 | \$13.45 | \$14.14 | \$14.41 |
| Nondurable Goods Manufacturing | \$730.38 | \$778.74 | \$725.85 | 47.8 | 48.1 | 45.0 | \$15.28 | \$16.19 | \$16.13 |

ESTIMATED NONFARM EMPLOYMENT (in thousands)

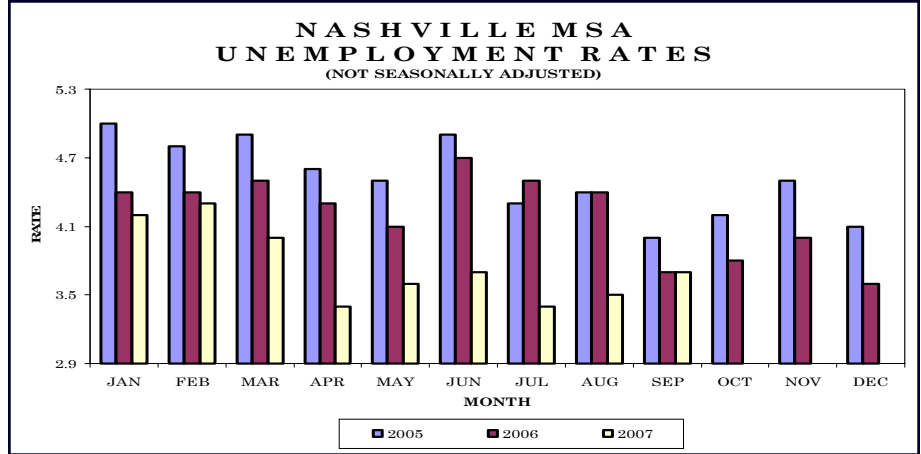
| Industry | September 2006 | Revised August 2007 | Preliminary September 2007 | Net Change | |
|--|----------------|---------------------|----------------------------|-------------------------|------------------------|
| | 2006 | 2007 | 2007 | Sept. 2006 - Sept. 2007 | Aug. 2007 - Sept. 2007 |
| Total Nonfarm | 643.1 | 645.9 | 649.6 | 6.5 | 3.7 |
| Total Private | 554.0 | 559.9 | 560.9 | 6.9 | 1.0 |
| Goods-Producing | 83.8 | 82.2 | 82.3 | -1.5 | 0.1 |
| Natural Resources, Mining, & Construction | 28.5 | 28.7 | 28.7 | 0.2 | 0.0 |
| Manufacturing | 55.3 | 53.5 | 53.6 | -1.7 | 0.1 |
| Durable Goods Manufacturing | 27.6 | 26.4 | 26.5 | -1.1 | 0.1 |
| Nondurable Goods Manufacturing | 27.7 | 27.1 | 27.1 | -0.6 | 0.0 |
| Service-Providing | 559.3 | 563.7 | 567.3 | 8.0 | 3.6 |
| Trade, Transportation, & Utilities | 174.0 | 176.0 | 175.9 | 1.9 | -0.1 |
| Wholesale Trade | 38.0 | 38.0 | 38.0 | 0.0 | 0.0 |
| Retail Trade | 72.1 | 73.5 | 73.4 | 1.3 | -0.1 |
| Food & Beverage Stores | 9.6 | 9.5 | 9.6 | 0.0 | 0.1 |
| General Merchandise Stores | 13.7 | 13.9 | 13.9 | 0.2 | 0.0 |
| Transportation, Warehousing, & Utilities | 63.9 | 64.5 | 64.5 | 0.6 | 0.0 |
| Truck Transportation | 16.0 | 16.0 | 16.0 | 0.0 | 0.0 |
| Warehousing & Storage | 7.8 | 8.6 | 8.7 | 0.9 | 0.1 |
| Information | 7.5 | 7.4 | 7.3 | -0.2 | -0.1 |
| Financial Activities | 32.8 | 32.8 | 32.9 | 0.1 | 0.1 |
| Professional & Business Services | 83.0 | 83.4 | 84.4 | 1.4 | 1.0 |
| Professional, Scientific, & Technical Services | 19.8 | 19.7 | 19.7 | -0.1 | 0.0 |
| Management of Companies & Enterprises | 4.7 | 4.6 | 4.6 | -0.1 | 0.0 |
| Administrative, Support, & Waste Management | 58.5 | 59.1 | 60.1 | 1.6 | 1.0 |
| Educational & Health Services | 76.2 | 78.1 | 78.8 | 2.6 | 0.7 |
| Health Care & Social Assistance | 65.6 | 66.7 | 66.8 | 1.2 | 0.1 |
| Hospitals | 24.8 | 25.7 | 25.8 | 1.0 | 0.1 |
| Leisure & Hospitality | 72.2 | 75.1 | 74.5 | 2.3 | -0.6 |
| Accommodation & Food Services | 64.2 | 66.7 | 65.9 | 1.7 | -0.8 |
| Food Services & Drinking Places | 45.1 | 46.7 | 46.1 | 1.0 | -0.6 |
| Other Services | 24.5 | 24.9 | 24.8 | 0.3 | -0.1 |
| Government | 89.1 | 86.0 | 88.7 | -0.4 | 2.7 |
| Federal Government | 14.7 | 14.5 | 14.5 | -0.2 | 0.0 |
| State Government | 16.1 | 15.1 | 16.3 | 0.2 | 1.2 |
| Local Government | 58.3 | 56.4 | 57.9 | -0.4 | 1.5 |



Nashville MSA — Cannon, Cheatham, Davidson, Dickson, Hickman, Macon, Robertson, Rutherford, Smith, Sumner, Trousdale, Williamson, Wilson

Total nonfarm employment increased by 400 jobs from August to September. There were seasonal increases in local government (up 1,000 jobs), state government (up 500 jobs), administrative/support/waste management (up 400 jobs), and wholesale trade (up 200 jobs).

This was partially offset by declines in accommodation/food services (down 700 jobs), which includes a drop of 500 jobs in accommodation and 200 jobs in food services/drinking places; arts/entertainment/recreation (down 400 jobs); and health care/social assistance and financial activities (both down 200 jobs).



HOURS AND EARNINGS OF PRODUCTION WORKERS NASHVILLE MSA

| Industry | Average Weekly Earnings | | | Average Weekly Hours | | | Average Hourly Earnings | | |
|--------------------------------|-------------------------|-----------|-----------|----------------------|-----------|-----------|-------------------------|-----------|-----------|
| | Sep. 2006 | Aug. 2007 | Sep. 2007 | Sep. 2006 | Aug. 2007 | Sep. 2007 | Sep. 2006 | Aug. 2007 | Sep. 2007 |
| Manufacturing | \$583.07 | \$604.50 | \$597.00 | 39.8 | 40.3 | 39.8 | \$14.65 | \$15.00 | \$15.00 |
| Durable Goods Manufacturing | \$595.63 | \$629.22 | \$618.68 | 40.3 | 40.7 | 40.2 | \$14.78 | \$15.46 | \$15.39 |
| Nondurable Goods Manufacturing | \$558.33 | \$554.40 | \$550.44 | 38.8 | 39.6 | 38.9 | \$14.39 | \$14.00 | \$14.15 |

ESTIMATED NONFARM EMPLOYMENT (in thousands)

| Industry | September 2006 | Revised | Preliminary | Net Change | |
|--|----------------|-------------|----------------|------------|------------|
| | | August 2007 | September 2007 | Sept. 2006 | Aug. 2007 |
| | | 2007 | 2007 | Sept. 2007 | Sept. 2007 |
| Total Nonfarm | 757.8 | 763.0 | 763.4 | 5.6 | 0.4 |
| Total Private | 658.9 | 664.8 | 663.7 | 4.8 | -1.1 |
| Goods-Producing | 124.8 | 125.1 | 124.8 | 0.0 | -0.3 |
| Natural Resources, Mining, & Construction | 40.3 | 42.8 | 42.8 | 2.5 | 0.0 |
| Manufacturing | 84.5 | 82.3 | 82.0 | -2.5 | -0.3 |
| Durable Goods Manufacturing | 58.1 | 56.7 | 56.6 | -1.5 | -0.1 |
| Computer & Electronic Product Manufacturing | 4.1 | 4.2 | 4.2 | 0.1 | 0.0 |
| Electrical Equipment & Appliance Manufacturing | 7.5 | 7.8 | 7.8 | 0.3 | 0.0 |
| Transportation Equipment Manufacturing | 20.2 | 19.0 | 19.0 | -1.2 | 0.0 |
| Nondurable Goods Manufacturing | 26.4 | 25.6 | 25.4 | -1.0 | -0.2 |
| Service-Providing | 633.0 | 637.9 | 638.6 | 5.6 | 0.7 |
| Trade, Transportation, & Utilities | 154.4 | 155.6 | 155.7 | 1.3 | 0.1 |
| Wholesale Trade | 37.2 | 37.3 | 37.5 | 0.3 | 0.2 |
| Retail Trade | 85.7 | 86.6 | 86.5 | 0.8 | -0.1 |
| Food & Beverage Stores | 12.1 | 12.4 | 12.4 | 0.3 | 0.0 |
| General Merchandise Stores | 17.0 | 17.2 | 17.1 | 0.1 | -0.1 |
| Transportation, Warehousing, & Utilities | 31.5 | 31.7 | 31.7 | 0.2 | 0.0 |
| Information | 19.7 | 19.5 | 19.5 | -0.2 | 0.0 |
| Financial Activities | 46.3 | 46.7 | 46.5 | 0.2 | -0.2 |
| Finance & Insurance | 35.2 | 35.4 | 35.3 | 0.1 | -0.1 |
| Real Estate, Rental, & Leasing | 11.1 | 11.3 | 11.2 | 0.1 | -0.1 |
| Professional & Business Services | 101.3 | 100.5 | 100.9 | -0.4 | 0.4 |
| Professional, Scientific, & Technical Services | 36.1 | 37.8 | 37.9 | 1.8 | 0.1 |
| Management of Companies & Enterprises | 7.7 | 7.7 | 7.6 | -0.1 | -0.1 |
| Administrative, Support, & Waste Management | 57.5 | 55.0 | 55.4 | -2.1 | 0.4 |
| Educational & Health Services | 104.6 | 105.4 | 105.3 | 0.7 | -0.1 |
| Educational Services | 22.9 | 23.0 | 23.1 | 0.2 | 0.1 |
| Health Care & Social Assistance | 81.7 | 82.4 | 82.2 | 0.5 | -0.2 |
| Hospitals | 27.7 | 27.9 | 28.0 | 0.3 | 0.1 |
| Leisure & Hospitality | 77.0 | 80.5 | 79.4 | 2.4 | -1.1 |
| Arts, Entertainment, & Recreation | 10.5 | 11.0 | 10.6 | 0.1 | -0.4 |
| Accommodation & Food Services | 66.5 | 69.5 | 68.8 | 2.3 | -0.7 |
| Accommodation | 12.0 | 13.0 | 12.5 | 0.5 | -0.5 |
| Food Services & Drinking Places | 54.5 | 56.5 | 56.3 | 1.8 | -0.2 |
| Other Services | 30.8 | 31.5 | 31.6 | 0.8 | 0.1 |
| Government | 98.9 | 98.2 | 99.7 | 0.8 | 1.5 |
| Federal Government | 11.4 | 11.5 | 11.5 | 0.1 | 0.0 |
| State Government | 28.5 | 28.5 | 29.0 | 0.5 | 0.5 |
| Local Government | 59.0 | 58.2 | 59.2 | 0.2 | 1.0 |

Nonfarm Employment (Smaller MSAs)

| | Clarksville, TN-KY MSA | | Cleveland, TN MSA | | Jackson, TN MSA | |
|--------------------------------------|------------------------|----------------|-------------------|----------------|-----------------|----------------|
| | August 2007 | September 2007 | August 2007 | September 2007 | August 2007 | September 2007 |
| | Revised | Prelim. | Revised | Prelim. | Revised | Prelim. |
| Total Nonfarm | 83,600 | 84,700 | 42,700 | 42,800 | 62,600 | 63,000 |
| Total Private | 66,200 | 66,400 | 37,600 | 37,500 | 50,400 | 50,700 |
| Goods-Producing | 16,400 | 16,400 | 11,400 | 11,400 | 14,500 | 14,500 |
| Service-Providing | 67,200 | 68,300 | 31,300 | 31,400 | 48,100 | 48,500 |
| Private Service-Providing | 49,800 | 50,000 | 26,200 | 26,100 | 35,900 | 36,200 |
| Natural Resources/Construction | 3,300 | 3,200 | 1,900 | 1,900 | 3,700 | 3,600 |
| Manufacturing | 13,100 | 13,200 | 9,500 | 9,500 | 10,800 | 10,900 |
| Durable Goods | 9,100 | 9,100 | 5,200 | 5,200 | 7,000 | 7,100 |
| Nondurable Goods | 4,000 | 4,100 | 4,300 | 4,300 | 3,800 | 3,800 |
| Trade/Transportation/Utilities | 16,400 | 16,600 | 7,600 | 7,600 | 12,900 | 12,900 |
| Wholesale Trade | 1,900 | 2,000 | 1,800 | 1,800 | 2,900 | 2,900 |
| Retail Trade | 11,800 | 11,900 | 4,600 | 4,600 | 7,500 | 7,500 |
| General Merchandise Stores | 3,600 | 3,600 | NA | NA | NA | NA |
| Transportation/Warehousing/Utilities | 2,700 | 2,700 | 1,200 | 1,200 | 2,500 | 2,500 |
| Information | 1,200 | 1,100 | 300 | 300 | 700 | 700 |
| Financial Activities | 2,700 | 2,700 | 1,700 | 1,700 | 1,900 | 1,900 |
| Professional/Business Services | 8,200 | 8,200 | 4,100 | 4,100 | 4,600 | 4,700 |
| Educational/Health Services | 9,700 | 9,800 | 5,600 | 5,600 | 8,100 | 8,400 |
| Leisure/Hospitality | 8,500 | 8,500 | 4,400 | 4,300 | 5,500 | 5,400 |
| Other Services | 3,100 | 3,100 | 2,500 | 2,500 | 2,200 | 2,200 |
| Government | 17,400 | 18,300 | 5,100 | 5,300 | 12,200 | 12,300 |
| Federal Government | 5,500 | 5,400 | 300 | 300 | 500 | 500 |
| State Government | 2,800 | 3,500 | 600 | 600 | 1,800 | 1,800 |
| Local Government | 9,100 | 9,400 | 4,200 | 4,400 | 9,900 | 10,000 |

| | Johnson City, TN MSA | | Kingsport/Bristol, TN-VA MSA | | Morristown, TN MSA | |
|--------------------------------------|----------------------|----------------|------------------------------|----------------|--------------------|----------------|
| | August 2007 | September 2007 | August 2007 | September 2007 | August 2007 | September 2007 |
| | Revised | Prelim. | Revised | Prelim. | Revised | Prelim. |
| Total Nonfarm | 81,900 | 82,300 | 124,700 | 124,600 | 51,100 | 51,400 |
| Total Private | 66,200 | 65,700 | 108,400 | 108,100 | 44,500 | 44,600 |
| Goods-Producing | 13,700 | 13,700 | 33,600 | 33,400 | 17,200 | 17,300 |
| Service-Providing | 68,200 | 68,600 | 91,100 | 91,200 | 33,900 | 34,100 |
| Private Service-Providing | 52,500 | 52,000 | 74,800 | 74,700 | 27,300 | 27,300 |
| Natural Resources/Construction | 3,600 | 3,600 | 8,800 | 8,600 | 2,200 | 2,200 |
| Manufacturing | 10,100 | 10,100 | 24,800 | 24,800 | 15,000 | 15,100 |
| Durable Goods | NA | NA | 11,600 | 11,600 | 10,000 | 10,000 |
| Nondurable Goods | NA | NA | 13,200 | 13,200 | NA | NA |
| Trade/Transportation/Utilities | 14,400 | 14,400 | 25,500 | 25,900 | 10,600 | 10,500 |
| Wholesale Trade | 3,000 | 3,000 | 5,400 | 5,400 | 2,100 | 2,100 |
| Retail Trade | 10,100 | 10,100 | 15,500 | 15,800 | 5,700 | 5,600 |
| General Merchandise Stores | NA | NA | NA | NA | NA | NA |
| Transportation/Warehousing/Utilities | 1,300 | 1,300 | 4,600 | 4,700 | 2,800 | 2,800 |
| Information | 2,300 | 2,300 | 2,500 | 2,500 | 700 | 700 |
| Financial Activities | 4,900 | 4,900 | 4,200 | 4,200 | 2,000 | 2,000 |
| Professional/Business Services | 8,000 | 7,700 | 8,500 | 8,200 | 3,500 | 3,600 |
| Educational/Health Services | 11,300 | 11,400 | 17,100 | 17,100 | 5,300 | 5,400 |
| Leisure/Hospitality | 9,000 | 8,700 | 12,700 | 12,500 | 3,500 | 3,400 |
| Other Services | 2,600 | 2,600 | 4,300 | 4,300 | 1,700 | 1,700 |
| Government | 15,700 | 16,600 | 16,300 | 16,500 | 6,600 | 6,800 |
| Federal Government | 2,300 | 2,300 | 1,200 | 1,200 | 400 | 300 |
| State Government | 5,700 | 6,400 | 2,400 | 2,400 | 1,300 | 1,300 |
| Local Government | 7,700 | 7,900 | 12,700 | 12,900 | 4,900 | 5,200 |

Clarksville MSA is Montgomery County, Stewart County, Christian County, KY, & Trigg County, KY. **Cleveland MSA** is Bradley & Polk counties. **Jackson MSA** is Chester & Madison counties. **Johnson City MSA** is Carter, Unicoi, & Washington counties. **Kingsport-Bristol MSA** is Hawkins County, Sullivan County, Scott County, VA, Washington County, VA, & Bristol City, VA. **Morristown MSA** is Grainger, Hamblen, & Jefferson counties.

Tennessee Department of Labor & Workforce Development
 Employment Security Division, Research & Statistics
 220 French Landing Drive
 Nashville, TN 37243

**FIRST CLASS MAIL
 POSTAGE & FEES PAID
 BUREAU OF
 LABOR STATISTICS
 PERMIT NO. G-738**

Phone: 615-741-2284
 Fax: 615-532-9434
 E-mail: wayne.meisels@state.tn.us



The Tennessee Department of Labor and Workforce Development is committed to principles of equal opportunity, equal access, and affirmative action. Auxiliary aids and services are available upon request to individuals with disabilities.
 Tennessee Department of Labor and Workforce Development; Authorization 337607; This public document was promulgated for electronic use only.

We're on the Web
www.tennessee.gov/labor-wfd
 Check out [The Source](http://www.tennessee.gov/labor-wfd/source) at
www.tennessee.gov/labor-wfd/source



The Tennessee Department of Labor and Workforce Development is an equal opportunity employer/program. Auxiliary aids and services are available upon request. **TTY: 615-532-2879 or 1-800-848-0299**

U.S. Consumer Price Index September 2007

| Group | Index | Percent Change | |
|---|-------|----------------|---------|
| | | Yearly | Monthly |
| U.S. City Average | | | |
| All Items (1982-84=100) / All Urban Consumers | 208.5 | 2.8 | 0.3 |
| All Items (1982-84=100) / Wage Earners & Clerical Workers | 203.9 | 2.8 | 0.3 |
| South | | | |
| All Items (1982-84=100) / All Urban Consumers | 201.7 | 3.0 | 0.3 |
| All Items (1982-84=100) / Wage Earners & Clerical Workers | 198.9 | 3.1 | 0.4 |

TENNESSEE UNEMPLOYMENT RATES

(Seasonally Adjusted)

