

# **TENNESSEE ECONOMIC ANALYSIS**

**November 2022**

**NOT TO BE RELEASED BEFORE:**

TIME: 1:30 PM CT

DAY: Thursday, December 15, 2022

**Prepared by:**

**Tennessee Department of Labor and Workforce Development**

**Workforce Insights, Research and Reporting Engine Division**

## Table of Contents

### Economic Indicators

	<u>Page</u>
Briefing Packet Summary	1
Labor Force Estimates Summary - Household Survey	2
Seasonally Adjusted Nonfarm Employment	3
Major Changes in Seasonally Adjusted Nonfarm Employment	3
Business Survey - Not Seasonally Adjusted	4-5

### Appendix

Unemployment Rates, 2011 - 2022	6
Hours and Earnings of Production Workers	7

### Graphs

Tennessee Unemployment Rates	8
Unemployment Rates - U.S. and Tennessee	8
Goods - Producing Jobs in Tennessee	9
Service - Providing Jobs in Tennessee	9

## BRIEFING PACKET SUMMARY

November 2022 pre.

### Unemployment Rates

Tennessee	November 2021	October 2022 rev.	November 2022 pre.	Change From:	
				Year Ago	Month Ago
Not Seasonally Adjusted	3.1%	3.5%	<b>3.3%</b>	0.2%	-0.2%
Seasonally Adjusted	3.6%	3.5%	<b>3.5%</b>	-0.1%	0.0%

#### United States

Not Seasonally Adjusted	3.9%	3.4%	<b>3.4%</b>	-0.5%	0.0%
Seasonally Adjusted	4.2%	3.7%	<b>3.7%</b>	-0.5%	0.0%

### Hours and Earnings of Production Workers (Manufacturing)

Tennessee	October 2022 rev.	November 2022 pre.	Change
Average Weekly Earnings	\$915.94	\$922.59	\$6.65
Average Weekly Hours	41.0	40.5	-0.5
Average Hourly Earnings	\$22.34	\$22.78	\$0.44

#### United States

Average Weekly Earnings	\$1045.66	\$1056.45	\$10.79
Average Weekly Hours	41.2	41.3	0.1
Average Hourly Earnings	\$25.38	\$25.58	\$0.20

### Summary

Tennessee's November seasonally adjusted unemployment rate remained the same at 3.5%.

Over the past year Tennessee's seasonally adjusted rate unemployment rate decreased from 3.6% to 3.5% while the U.S rate decreased from 4.2% to 3.7%.

Over the year, nonfarm employment increased 119,400 jobs. The largest increases were in Leisure and Hospitality, Education & Health Services, and Trade, Transportation and Utilities.

Over the month, total nonfarm employment increased 6,400. The largest increases were in Accommodation & Food Services, Wholesale Trade, and Transportation, Warehousing & Utilities.

## LABOR FORCE ESTIMATES SUMMARY

### HOUSEHOLD SURVEY

<b>Tennessee*</b> Not Seasonally Adjusted	November 2021	Revised October 2022	Preliminary November 2022	Change from November 2021 to November 2022		Change from October 2022 to November 2022	
Civilian Labor Force	3,358,423	3,334,931	<b>3,300,320</b>	-58,103	-1.7%	-34,611	-1.0%
Labor Force Participation Rate	60.7%	59.5%	<b>58.8%</b>	-1.9	percentage points	-0.7	percentage points
Employment	3,255,213	3,219,676	<b>3,192,059</b>	-63,154	-1.9%	-27,617	-0.9%
Unemployment	103,210	115,255	<b>108,261</b>	5,051	4.9%	-6,994	-6.1%
Unemployment Rate	3.1%	3.5%	<b>3.3%</b>	0.2	percentage points	-0.2	percentage points

#### Seasonally Adjusted

Civilian Labor Force	3,339,185	3,368,279	<b>3,346,049</b>	6,864	0.2%	-22,230	-0.7%
Labor Force Participation Rate	60.3%	60.1%	<b>59.6%</b>	-0.7	percentage points	-0.5	percentage points
Employment	3,219,058	3,251,766	<b>3,227,707</b>	8,649	0.3%	-24,059	-0.7%
Unemployment	120,127	116,513	<b>118,342</b>	-1,785	-1.5%	1,829	1.6%
Unemployment Rate	3.6%	3.5%	<b>3.5%</b>	-0.1	percentage points	0.0	percentage points

<b>United States**</b> Not Seasonally Adjusted	November 2021	Revised October 2022	Preliminary November 2022	Change from November 2021 to November 2022		Change from October 2022 to November 2022	
Civilian Labor Force	162,099,000	164,753,000	<b>164,272,000</b>	2,173,000	1.3%	-481,000	-0.3%
Labor Force Participation Rate	61.9%	62.3%	<b>62.1%</b>	0.2	percentage points	-0.2	percentage points
Employment	155,797,000	159,144,000	<b>158,749,000</b>	2,952,000	1.9%	-395,000	-0.2%
Unemployment	6,302,000	5,609,000	<b>5,523,000</b>	-779,000	-12.4%	-86,000	-1.5%
Unemployment Rate	3.9%	3.4%	<b>3.4%</b>	-0.5	percentage points	0.0	percentage points

#### Seasonally Adjusted

Civilian Labor Force	162,126,000	164,667,000	<b>164,481,000</b>	2,355,000	1.5%	-186,000	-0.1%
Labor Force Participation Rate	61.9%	62.2%	<b>62.1%</b>	0.2	percentage points	-0.1	percentage points
Employment	155,324,000	158,608,000	<b>158,470,000</b>	3,146,000	2.0%	-138,000	-0.1%
Unemployment	6,802,000	6,059,000	<b>6,011,000</b>	-791,000	-11.6%	-48,000	-0.8%
Unemployment Rate	4.2%	3.7%	<b>3.7%</b>	-0.5	percentage points	0.0	percentage points

\* Error range for Tennessee estimates cannot be computed

\*\* Error range for U.S. estimates is +/- 0.2%

## Seasonally Adjusted Nonfarm Employment

(numbers in thousands)

Annual Change      Monthly Change

	November 2021	October 2022 rev.	November 2022	November 2021 to November 2022		October 2022 to November 2022	
				Net Chg.	% chg.	Net Chg.	% chg.
				<b>Total Non-Farm</b>	3,148.9	3,261.9	<b>3,268.3</b>
Mining, Logging and Construction	145.6	155.4	<b>155.4</b>	9.8	6.7%	0.0	0.0%
Mining and Logging	4.3	4.6	<b>4.6</b>	0.3	7.0%	0.0	0.0%
Construction	141.3	150.8	<b>150.8</b>	9.5	6.7%	0.0	0.0%
Manufacturing	355.5	363.6	<b>362.6</b>	7.1	2.0%	-1.0	-0.3%
Durable Goods Manufacturing	226.7	235.8	<b>235.4</b>	8.7	3.8%	-0.4	-0.2%
Non-Durable Goods Manufacturing	128.8	127.8	<b>127.2</b>	-1.6	-1.2%	-0.6	-0.5%
Trade, Transportation, and Utilities	665.4	684.8	<b>686.3</b>	20.9	3.1%	1.5	0.2%
Wholesale Trade	124.8	130.4	<b>131.7</b>	6.9	5.5%	1.3	1.0%
Retail Trade	338.1	344.1	<b>343.6</b>	5.5	1.6%	-0.5	-0.1%
Transportation, Warehousing, and Utilities	202.5	210.3	<b>211.0</b>	8.5	4.2%	0.7	0.3%
Information	48.9	49.9	<b>50.4</b>	1.5	3.1%	0.5	1.0%
Financial Activities	173.2	180.0	<b>180.1</b>	6.9	4.0%	0.1	0.1%
Finance and Insurance	132.0	135.4	<b>135.2</b>	3.2	2.4%	-0.2	-0.1%
Real Estate, Rental, and Leasing	41.2	44.6	<b>44.9</b>	3.7	9.0%	0.3	0.7%
Professional and Business Services	436.7	450.4	<b>449.8</b>	13.1	3.0%	-0.6	-0.1%
Professional, Scientific, and Technical Services	160.9	168.9	<b>168.5</b>	7.6	4.7%	-0.4	-0.2%
Management of Companies and Enterprises	53.2	54.2	<b>54.2</b>	1.0	1.9%	0.0	0.0%
Administrative, Support, and Waste Services	222.6	227.3	<b>227.1</b>	4.5	2.0%	-0.2	-0.1%
Education and Health Services	437.4	458.5	<b>459.8</b>	22.4	5.1%	1.3	0.3%
Educational Services	61.2	65.6	<b>66.2</b>	5.0	8.2%	0.6	0.9%
Health Care and Social Assistance	376.2	392.9	<b>393.6</b>	17.4	4.6%	0.7	0.2%
Leisure and Hospitality	334.0	357.1	<b>359.5</b>	25.5	7.6%	2.4	0.7%
Arts, Entertainment, and Recreation	42.1	45.7	<b>45.6</b>	3.5	8.3%	-0.1	-0.2%
Accommodation and Food Services	291.9	311.4	<b>313.9</b>	22.0	7.5%	2.5	0.8%
Other Services	124.5	127.4	<b>128.7</b>	4.2	3.4%	1.3	1.0%
Government	427.7	434.8	<b>435.7</b>	8.0	1.9%	0.9	0.2%
Federal Government	52.0	53.1	<b>52.9</b>	0.9	1.7%	-0.2	-0.4%
State Government	92.7	93.7	<b>94.3</b>	1.6	1.7%	0.6	0.6%
Local Government	283.0	288.0	<b>288.5</b>	5.5	1.9%	0.5	0.2%

### Major Changes in Seasonally Adjusted Nonfarm Employment (in thousands)

#### I. Monthly Change (from October 2022 rev. to November 2022 pre.)

	October 2022 rev.	November 2022 pre.	Change
<b>A. Major Employment Increases</b>			
Accommodation and Food Services	311.4	313.9	2.5
Wholesale Trade	130.4	131.7	1.3
Transportation, Warehousing, and Utilities	210.3	211.0	0.7
<b>B. Major Employment Decreases</b>			
Manufacturing	363.6	362.6	-1.0
Professional and Business Services	450.4	449.8	-0.6
Mining, Logging and Construction	155.4	155.4	0.0

#### II. Yearly Change (from November 2021 to November 2022 pre.)

	November 2021	November 2022 pre.	Change
<b>A. Major Employment Increases</b>			
Leisure and Hospitality	334.0	359.5	25.5
Education and Health Services	437.4	459.8	22.4
Trade, Transportation, and Utilities	665.4	686.3	20.9
<b>B. Major Employment Decreases</b>			
Non-Durable Goods Manufacturing	128.8	127.2	-1.6

**BUSINESS SURVEY - Not Seasonally Adjusted**

Estimated Nonfarm Employment by Industry\*

(numbers in thousands)	November 2021	October 2022 rev.	November 2022	Annual Change		Monthly Change	
				November 2021 to November 2022		October 2022 to November 2022	
				Net Chg.	% chg.	Net Chg.	% chg.
Total Non-Farm	3,184.2	3,284.8	<b>3,303.0</b>	118.8	3.7%	18.2	0.6%
Total Private	2,743.9	2,838.0	<b>2,854.2</b>	110.3	4.0%	16.2	0.6%
Goods Producing	502.7	519.6	<b>519.1</b>	16.4	3.3%	-0.5	-0.1%
Mining, Logging and Construction	147.3	156.6	<b>156.8</b>	9.5	6.4%	0.2	0.1%
Manufacturing	355.4	363.0	<b>362.3</b>	6.9	1.9%	-0.7	-0.2%
Durable Goods Manufacturing	226.3	235.2	<b>234.9</b>	8.6	3.8%	-0.3	-0.1%
Wood Products	13.6	14.0	<b>14.0</b>	0.4	2.9%	0.0	0.0%
Non-Metallic Mineral Products	14.2	14.9	<b>14.9</b>	0.7	4.9%	0.0	0.0%
Primary Metal Products	11.4	11.5	<b>11.4</b>	0.0	0.0%	-0.1	-0.9%
Fabricated Metal Products	40.9	42.4	<b>42.3</b>	1.4	3.4%	-0.1	-0.2%
Machinery Manufacturing	24.8	24.8	<b>24.7</b>	-0.1	-0.4%	-0.1	-0.4%
Computer and Electronic Products	6.4	6.6	<b>6.6</b>	0.2	3.1%	0.0	0.0%
Electrical Equipment and Appliances	19.1	19.5	<b>19.5</b>	0.4	2.1%	0.0	0.0%
Transportation Equipment	69.2	73.8	<b>73.8</b>	4.6	6.6%	0.0	0.0%
Furniture and Related Products	10.0	10.3	<b>10.3</b>	0.3	3.0%	0.0	0.0%
Miscellaneous Durable Manufacturing	16.7	17.4	<b>17.4</b>	0.7	4.2%	0.0	0.0%
Non-Durable Goods Manufacturing	129.1	127.8	<b>127.4</b>	-1.7	-1.3%	-0.4	-0.3%
Food Manufacturing	38.0	37.7	<b>37.6</b>	-0.4	-1.1%	-0.1	-0.3%
Beverage and Tobacco Products	8.6	8.6	<b>8.6</b>	0.0	0.0%	0.0	0.0%
Paper Manufacturing	12.3	12.1	<b>12.0</b>	-0.3	-2.4%	-0.1	-0.8%
Printing and Related Support Activities	8.2	7.9	<b>7.9</b>	-0.3	-3.7%	0.0	0.0%
Chemical Manufacturing	26.2	25.8	<b>25.8</b>	-0.4	-1.5%	0.0	0.0%
Plastics and Rubber Products	24.5	24.7	<b>24.4</b>	-0.1	-0.4%	-0.3	-1.2%
Service Providing	2,681.5	2,765.2	<b>2,783.9</b>	102.4	3.8%	18.7	0.7%
Private Service Providing (Service Providing Less Government)	2,241.2	2,318.4	<b>2,335.1</b>	93.9	4.2%	16.7	0.7%
Trade, Transportation, and Utilities	674.8	683.9	<b>695.8</b>	21.0	3.1%	11.9	1.7%
Wholesale Trade	124.9	130.4	<b>132.1</b>	7.2	5.8%	1.7	1.3%
Merchant wholesalers, Durable Goods	73.2	78.5	<b>80.0</b>	6.8	9.3%	1.5	1.9%
Merchant wholesalers, Non-Durable Goods	44.4	44.4	<b>44.5</b>	0.1	0.2%	0.1	0.2%
Wholesale Electronic Markets	7.3	7.5	<b>7.6</b>	0.3	4.1%	0.1	1.3%
Retail Trade	343.7	342.9	<b>348.8</b>	5.1	1.5%	5.9	1.7%
Motor Vehicle and Parts Dealers	46.9	48.5	<b>48.4</b>	1.5	3.2%	-0.1	-0.2%
Furniture and Home Furnishings Stores	10.4	10.1	<b>10.2</b>	-0.2	-1.9%	0.1	1.0%
Building Material and Garden Supply Stores	30.5	32.1	<b>32.2</b>	1.7	5.6%	0.1	0.3%
Food and Beverage Stores	55.9	56.9	<b>57.9</b>	2.0	3.6%	1.0	1.8%
Health and Personal Care Stores	26.4	26.6	<b>27.0</b>	0.6	2.3%	0.4	1.5%
Gasoline Stations	24.3	24.9	<b>24.7</b>	0.4	1.6%	-0.2	-0.8%
Clothing and Clothing Accessories Stores	22.3	22.3	<b>23.2</b>	0.9	4.0%	0.9	4.0%
Sporting Goods, Hobby, Book, and Music Stores	12.0	11.6	<b>12.1</b>	0.1	0.8%	0.5	4.3%
General Merchandise Stores	77.1	73.1	<b>75.8</b>	-1.3	-1.7%	2.7	3.7%
Miscellaneous Store Retailers	18.0	18.7	<b>18.7</b>	0.7	3.9%	0.0	0.0%
Non-Store Retailers	8.6	8.6	<b>8.7</b>	0.1	1.2%	0.1	1.2%
Transportation, Warehousing, and Utilities	206.2	210.6	<b>214.9</b>	8.7	4.2%	4.3	2.0%
Utilities	3.9	4.0	<b>4.0</b>	0.1	2.6%	0.0	0.0%
Transportation and Warehousing	202.3	206.6	<b>210.9</b>	8.6	4.3%	4.3	2.1%
Information	49.5	50.1	<b>51.1</b>	1.6	3.2%	1.0	2.0%
Financial Activities	173.6	180.2	<b>180.3</b>	6.7	3.9%	0.1	0.1%
Finance and Insurance	132.6	135.6	<b>135.6</b>	3.0	2.3%	0.0	0.0%
Real Estate, Rental, and Leasing	41.0	44.6	<b>44.7</b>	3.7	9.0%	0.1	0.2%
Professional and Business Services	444.3	454.5	<b>456.2</b>	11.9	2.7%	1.7	0.4%
Professional, Scientific, and Technical Services	161.8	168.8	<b>169.3</b>	7.5	4.6%	0.5	0.3%
Management of Companies and Enterprises	53.7	54.5	<b>54.6</b>	0.9	1.7%	0.1	0.2%
Administrative, Support, and Waste Services	228.8	231.2	<b>232.3</b>	3.5	1.5%	1.1	0.5%
Education and Health Services	442.1	463.5	<b>465.1</b>	23.0	5.2%	1.6	0.3%
Educational Services	64.1	68.6	<b>69.5</b>	5.4	8.4%	0.9	1.3%
Health Care and Social Assistance	378.0	394.9	<b>395.6</b>	17.6	4.7%	0.7	0.2%
Ambulatory Health Care Services	160.8	166.6	<b>167.5</b>	6.7	4.2%	0.9	0.5%
Hospitals	109.9	114.2	<b>114.3</b>	4.4	4.0%	0.1	0.1%
Nursing and Residential Care Facilities	55.3	59.7	<b>59.4</b>	4.1	7.4%	-0.3	-0.5%
Social Assistance	52.0	54.4	<b>54.4</b>	2.4	4.6%	0.0	0.0%
Leisure and Hospitality	332.9	358.5	<b>357.9</b>	25.0	7.5%	-0.6	-0.2%
Arts, Entertainment, and Recreation	41.6	45.7	<b>44.5</b>	2.9	7.0%	-1.2	-2.6%

Accommodation and Food Services	291.3	312.8	<b>313.4</b>	22.1	7.6%	0.6	0.2%
Accommodation	34.5	36.8	<b>36.2</b>	1.7	4.9%	-0.6	-1.6%
Food Services and Drinking Places	256.8	276.0	<b>277.2</b>	20.4	7.9%	1.2	0.4%
<b>Other Services</b>	<b>124.0</b>	<b>127.7</b>	<b>128.7</b>	<b>4.7</b>	<b>3.8%</b>	<b>1.0</b>	<b>0.8%</b>
<b>Government</b>	<b>440.3</b>	<b>446.8</b>	<b>448.8</b>	<b>8.5</b>	<b>1.9%</b>	<b>2.0</b>	<b>0.4%</b>
Federal Government	52.3	53.1	<b>53.4</b>	1.1	2.1%	0.3	0.6%
State Government	97.4	98.8	<b>99.1</b>	1.7	1.7%	0.3	0.3%
State Government Educational Services	57.8	59.3	<b>59.6</b>	1.8	3.1%	0.3	0.5%
State Government Excluding Education	39.6	39.5	<b>39.5</b>	-0.1	-0.3%	0.0	0.0%
Local Government	290.6	294.9	<b>296.3</b>	5.7	2.0%	1.4	0.5%
Local Government Educational Services	146.9	149.7	<b>150.0</b>	3.1	2.1%	0.3	0.2%
Local Government Excluding Education	143.7	145.2	<b>146.3</b>	2.6	1.8%	1.1	0.8%

\* Estimates include all full- and part-time nonagricultural wage and salary employees who worked during, or received pay for, any part of the pay period which include the 12th of the month. This is a count of jobs by place of work. Agricultural workers, proprietors, self-employed persons, workers in private households, and unpaid family workers are excluded.

## Unemployment Rates, 2011-2022

### U.S. & Tennessee, Seasonally Adjusted & Not Seasonally Adjusted

	2011				2012				2013				2014			
	U.S.		TN		U.S.		TN		U.S.		TN		U.S.		TN	
	Seas. Adj.	Not Seas. Adj.	Seas. Adj.	Not Seas. Adj.	Seas. Adj.	Not Seas. Adj.	Seas. Adj.	Not Seas. Adj.	Seas. Adj.	Not Seas. Adj.	Seas. Adj.	Not Seas. Adj.	Seas. Adj.	Not Seas. Adj.	Seas. Adj.	Not Seas. Adj.
Jan	9.1	9.8	9.6*	10.2*	8.3	8.8	8.2	8.6	8.0	8.5	8.0-	8.7*	6.6	7.0	6.9*	7.1*
Feb	9.0	9.5	9.5*	9.8*	8.3	8.7	8.1	8.4	7.7	8.1	8.0*	8.2*	6.7	7.0	6.8*	7.1*
Mar	9.0	9.2	9.4*	9.5*	8.2	8.4	8.0	8.1	7.5	7.6	8.0*	7.9*	6.7	6.8	6.8*	6.9*
Apr	9.1	8.7	9.3*	8.9*	8.2	7.7	8.0	7.5	7.6	7.1	8.0*	7.4*	6.2	5.9	6.7*	6.0*
May	9.0	8.7	9.3*	8.9*	8.2	7.9	8.0	7.7	7.5	7.3	7.9*	7.6*	6.3	6.1	6.7*	6.3*
Jun	9.1	9.3	9.2*	9.8*	8.2	8.4	8.0	8.6*	7.5	7.8	7.9*	8.5*	6.1	6.3	6.7*	7.1*
Jul	9.0	9.3	9.2*	9.4*	8.2	8.6	8.0	8.6-	7.3	7.7	7.8*	8.2*	6.2	6.5	6.6*	7.3*
Aug	9.0	9.1	9.1*	9.2*	8.1	8.2	7.9	8.0	7.2	7.3	7.7*	7.7*	6.1	6.3	6.6*	6.9*
Sep	9.0	8.8	8.9	8.9*	7.8	7.6	7.8-	7.5	7.2	7.0	7.6*	7.5*	5.9	5.7	6.5*	6.4*
Oct	8.8	8.5	8.8-	8.5-	7.8	7.5	7.8-	7.6*	7.2	7.0	7.4*	7.5*	5.7	5.5	6.4*	6.1*
Nov	8.6	8.2	8.6-	8.1	7.7	7.4	7.8*	7.3	6.9	6.6	7.3*	6.9*	5.8	5.5	6.3*	6.1*
Dec	8.5	8.3	8.4	8.1	7.9	7.6	7.9-	7.7*	6.7	6.5	7.1*	6.8*	5.6	5.4	6.2*	5.9*
<b>Avg</b>		8.9		9.1*		8.1		8.0		7.4		7.8*		6.2		6.6*

	2015				2016				2017				2018			
	U.S.		TN		U.S.		TN		U.S.		TN		U.S.		TN	
	Seas. Adj.	Not Seas. Adj.	Seas. Adj.	Not Seas. Adj.	Seas. Adj.	Not Seas. Adj.	Seas. Adj.	Not Seas. Adj.	Seas. Adj.	Not Seas. Adj.	Seas. Adj.	Not Seas. Adj.	Seas. Adj.	Not Seas. Adj.	Seas. Adj.	Not Seas. Adj.
Jan	5.7	6.1	6.1*	6.6*	4.8	5.3	4.8-	5.0	4.7	5.1	4.6	5.0	4.0	4.5	3.5	3.8
Feb	5.5	5.8	6.1*	6.2*	4.9	5.2	4.7	4.8	4.6	4.9	4.4	4.6	4.1	4.4	3.5	3.7
Mar	5.4	5.6	6.0*	5.9*	5.0	5.1	4.7	4.7	4.4	4.6	4.2	4.1	4.0	4.1	3.5	3.5
Apr	5.4	5.1	5.9*	5.3*	5.1	4.7	4.6	4.3	4.4	4.1	3.9	3.4	4.0	3.7	3.5	3.0
May	5.6	5.3	5.8*	5.6*	4.8	4.5	4.7	4.2	4.4	4.1	3.7	3.2	3.8	3.6	3.5	3.1
Jun	5.3	5.5	5.7*	6.2*	4.9	5.1	4.7	5.2*	4.3	4.5	3.6	4.1	4.0	4.2	3.5	4.1
Jul	5.2	5.6	5.5*	6.0*	4.8	5.1	4.8-	5.2*	4.3	4.6	3.5	3.9	3.8	4.1	3.5	3.9
Aug	5.1	5.2	5.4*	5.5*	4.9	5.0	4.8	5.0-	4.4	4.5	3.4	3.6	3.8	3.9	3.5	3.6
Sep	5.0	4.9	5.3*	5.2*	5.0	4.8	4.9	4.9*	4.3	4.1	3.4	3.2	3.7	3.6	3.5	3.4
Oct	5.0	4.8	5.1*	5.0*	4.9	4.7	4.9-	4.7-	4.2	3.9	3.4	3.3	3.8	3.5	3.5	3.4
Nov	5.1	4.8	5.0	4.9*	4.7	4.4	4.8	4.5*	4.2	3.9	3.4	3.2	3.8	3.5	3.5	3.1
Dec	5.0	4.8	4.9	4.7	4.7	4.5	4.7-	4.5-	4.1	3.9	3.5	3.2	3.9	3.7	3.5	3.2
<b>Avg</b>		5.3		5.6*		4.9		4.7		4.4		3.7		3.9		3.5

	2019				2020				2021				2022			
	U.S.		TN		U.S.		TN		U.S.		TN		U.S.		TN	
	Seas. Adj.	Not Seas. Adj.	Seas. Adj.	Not Seas. Adj.	Seas. Adj.	Not Seas. Adj.	Seas. Adj.	Not Seas. Adj.	Seas. Adj.	Not Seas. Adj.	Seas. Adj.	Not Seas. Adj.	Seas. Adj.	Not Seas. Adj.	Seas. Adj.	Not Seas. Adj.
Jan	4.0	4.4	3.5	3.9	3.5	4.0	3.6	3.8	6.4	6.8	5.2	5.6	4.0	4.4	3.5	3.7
Feb	3.8	4.1	3.4	3.5	3.5	3.8	3.6	3.6	6.2	6.6	5.0	5.2	3.8	4.1	3.4	3.3
Mar	3.8	3.9	3.4	3.5	4.4	4.5	3.6	4.0	6.0	6.2	4.9	4.9	3.6	3.8	3.2	3.0
Apr	3.6	3.3	3.4	2.9	14.7	14.4	15.9*	15.3*	6.0	5.7	4.8	4.4	3.6	3.3	3.2	3.1
May	3.6	3.4	3.3	3.1	13.2	13.0	12.1	11.8	5.8	5.5	4.6	4.3	3.6	3.4	3.3	3.4-
Jun	3.6	3.8	3.3	3.9*	11.0	11.2	10.1	10.6	5.9	6.1	4.4	5.3	3.6	3.8	3.3	4.2*
Jul	3.7	4.0	3.3	3.7	10.2	10.5	8.8	9.8	5.4	5.7	4.2	4.6	3.5	3.8	3.3	4.0*
Aug	3.7	3.8	3.3	3.3	8.4	8.5	7.5	7.5	5.2	5.3	4.0	4.1	3.7	3.8	3.4	3.5
Sep	3.5	3.3	3.4	3.1	7.9	7.7	6.9	6.6	4.7	4.6	3.8	3.6	3.5	3.3	3.4	3.0
Oct	3.6	3.3	3.4	3.3-	6.9	6.6	6.1	5.8	4.6	4.3	3.7	3.3	3.7	3.4	3.5	3.5*
Nov	3.6	3.3	3.5	3.2	6.7	6.4	5.7	5.2	4.2	3.9	3.6	3.1	3.7	3.4	3.5	3.3
Dec	3.6	3.4	3.6	3.3	6.7	6.5	5.5	5.2	3.9	3.7	3.6	3.1				
<b>Avg</b>		3.7		3.4		8.1		7.4		5.3		4.3				

\* Designates when Tennessee's unemployment rate is greater than the U.S. rate

- Designates when Tennessee's unemployment rate is equal to the U.S. rate



## HOURS AND EARNINGS OF PRODUCTION WORKERS

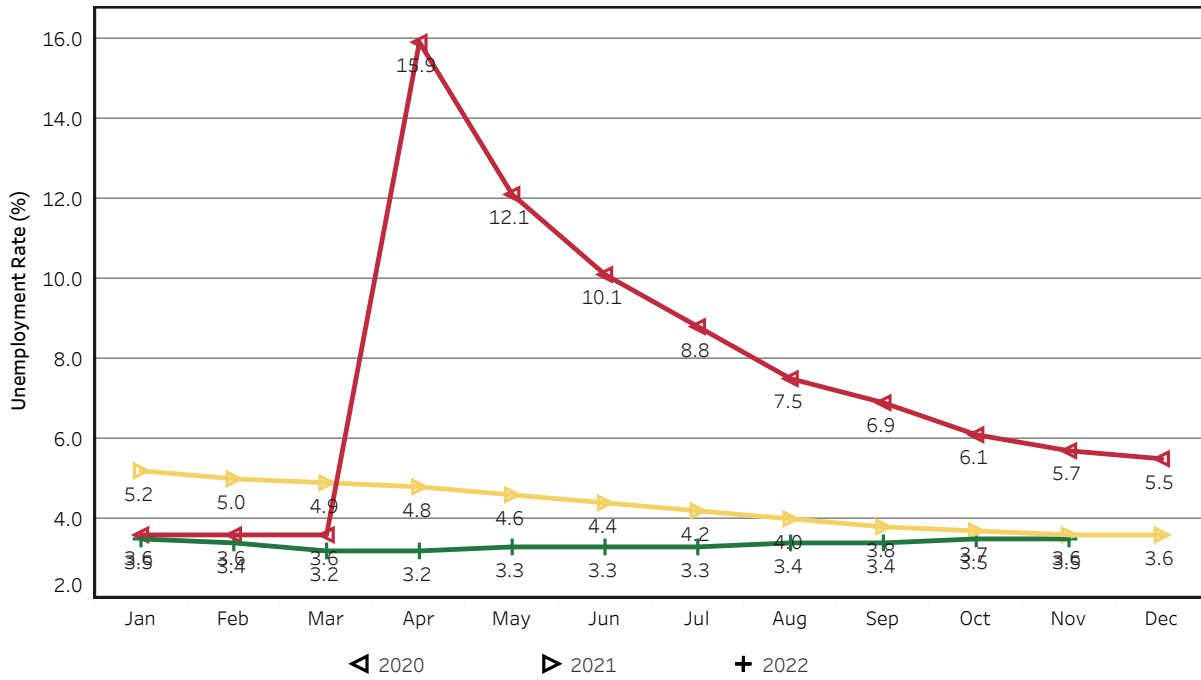
	Average Weekly Earning			Average Weekly Hours			Average Hourly Earning		
	November 2021	October 2022	November 2022	November 2021	October 2022	November 2022	November 2021	October 2022	November 2022
<b>Manufacturing</b>	\$952.66	\$915.94	\$922.59	43.6	41.0	40.5	\$21.85	\$22.34	\$22.78
<b>Durable Goods</b>	1010.24	962.02	974.07	44.0	41.7	41.1	22.96	23.07	23.70
<b>Non-Durable Goods</b>	856.99	837.50	836.35	43.0	39.9	39.6	19.93	20.99	21.12

## HOURS AND EARNINGS OF PRODUCTION WORKERS - ALL MANUFACTURING

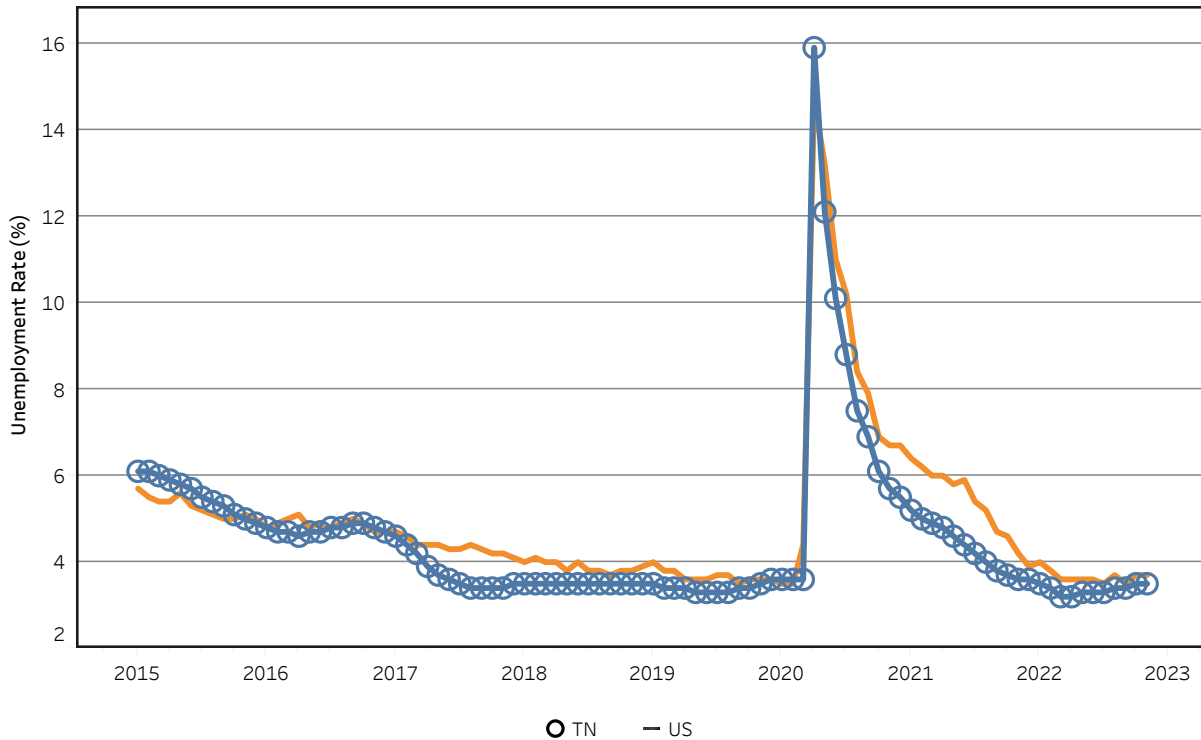
(ranked October 2022 preliminary average weekly earnings; November 2022 will be available later this month)

	Average Weekly Earning			Average Weekly Hours			Average Hourly Earning		
	October 2021	October 2022	Percent Change	October 2021	October 2022	Percent Change	October 2021	October 2022	Percent Change
<b>FLORIDA</b>	\$1066.3	\$1141.14	7.0%	41.90	42.00	0.2%	\$25.45	\$27.17	6.8%
<b>GEORGIA</b>	\$956.67	\$1008.50	5.4%	42.90	41.40	-3.5%	\$22.30	\$24.36	9.2%
<b>KENTUCKY</b>	\$991.78	\$1005.24	1.4%	40.30	41.30	2.5%	\$24.61	\$24.34	-1.1%
<b>ALABAMA</b>	\$949.45	\$983.70	3.6%	42.50	41.70	-1.9%	\$22.34	\$23.59	5.6%
<b>SOUTH CAROLINA</b>	\$1031.1	\$977.95	-5.2%	42.00	39.90	-5.0%	\$24.55	\$24.51	-0.2%
<b>VIRGINIA</b>	\$888.30	\$957.83	7.8%	42.00	41.90	-0.2%	\$21.15	\$22.86	8.1%
<b>TENNESSEE</b>	\$923.90	\$927.63	0.4%	42.40	41.10	-3.1%	\$21.79	\$22.57	3.6%
<b>NORTH CAROLINA</b>	\$838.35	\$875.61	4.4%	41.40	40.50	-2.2%	\$20.25	\$21.62	6.8%
<b>MISSISSIPPI</b>	\$790.42	\$860.52	8.9%	39.60	40.40	2.0%	\$19.96	\$21.30	6.7%
<b>ARKANSAS</b>	\$806.67	\$828.83	2.7%	40.70	39.60	-2.7%	\$19.82	\$20.93	5.6%

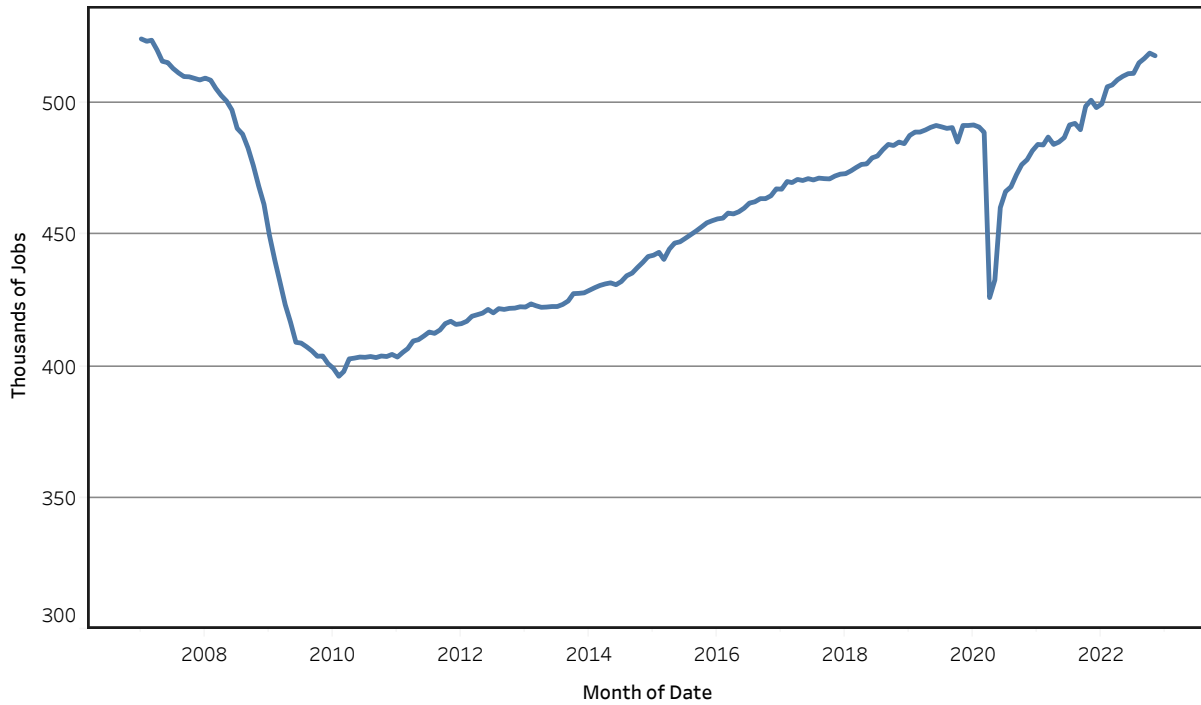
## Unemployment Rates - Tennessee Seasonally Adjusted - 2020 to 2022



## Unemployment Rates - US & Tennessee Seasonally Adjusted - January 2015 to November 2022



## Goods - Producing Jobs in Tennessee Seasonally Adjusted - Jan 2007 to Nov 2022



## Service - Providing Jobs in Tennessee Seasonally Adjusted - Jan 2007 to Nov 2022

